



# enbrighten 58436 Z-Wave In-Wall Smart Toggle Switch Instruction Manual

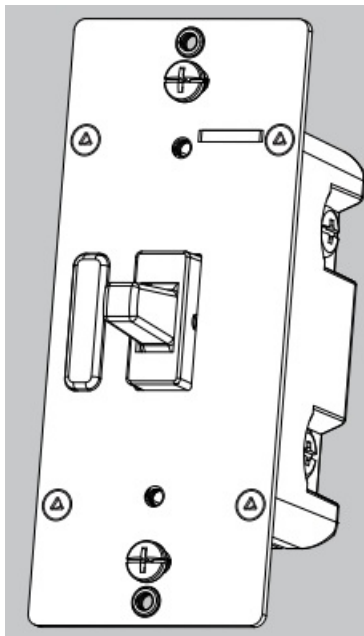
[Home](#) » [enbrighten](#) » enbrighten 58436 Z-Wave In-Wall Smart Toggle Switch Instruction Manual 

## Contents

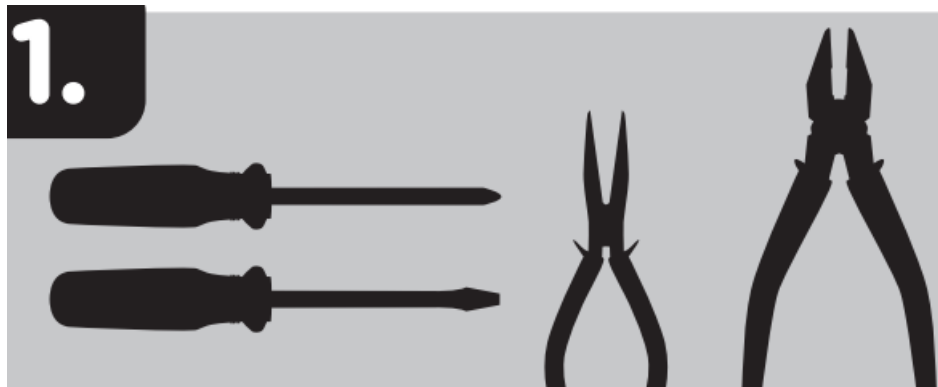
- 1 enbrighten 58436 Z-Wave In-Wall Smart Toggle Switch
- 2 TOOLS YOU WILL NEED
- 3 IMPORTANT
- 4 WARNING-SHOCK HAZARD
- 5 Multi-switch wiring
- 6 Adding your device to a Z-Wave network
- 7 Convert any smart control to a multi-location switch
- 8 WARRANTY
- 9 FCC STATEMENT
- 10 Documents / Resources
- 11 Related Posts



**enbrighten 58436 Z-Wave In-Wall Smart Toggle Switch**



## TOOLS YOU WILL NEED



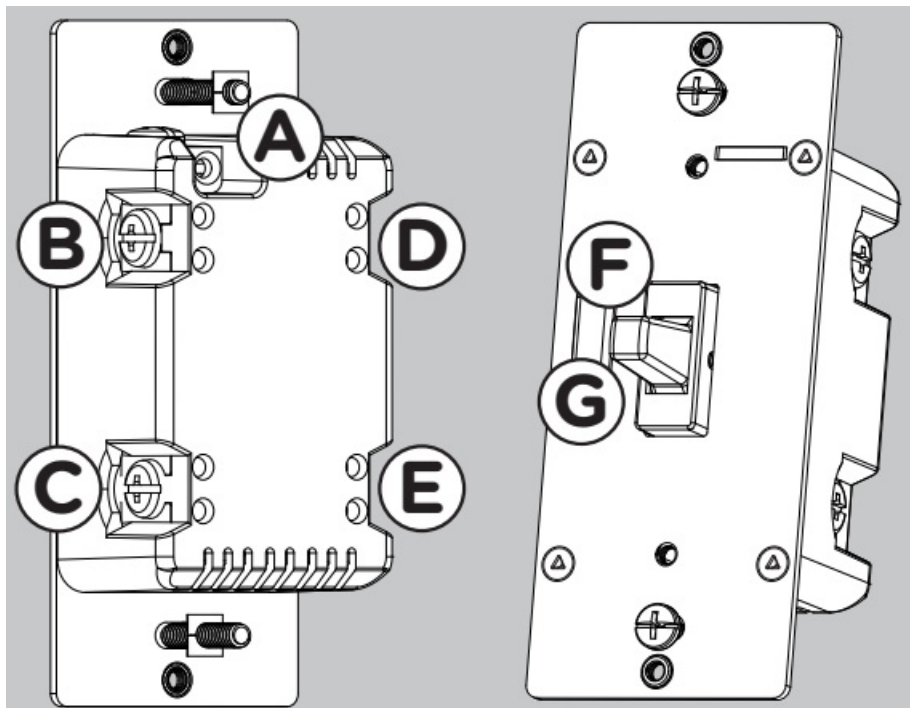
## IMPORTANT

The fixture controlled by the Z-Wave in-wall smart switch must not exceed 960W incandescent, 1800w (15A) resistive or 1/2HP motor. The switch is designed only for use with permanently installed fixtures.

### Getting to know your new Z-Wave device

- Turn ON/OFF manually or remotely via the Z-Wave controller
- Can be included in multiple groups and scenes
- May be used in single-pole installation or with up to four add-on switches 46200/59340) in 3-way or 4-way wiring configurations
- Compatible with all incandescent and CFL/LED bulbs
- Auto line/load detection
- Uses a standard, toggle wall plate for single-gang installations (wall plate not included)
- Z-Wave certified for simple pairing and integrated home automation
- Screw terminal installation requires wiring connections for line (hot), load, neutral and ground. Traveler wire required for 3-way or 4-way installation
- This Z-Wave device has advanced features that allow you to customize your experience. These features can only be adjusted by a Z-Wave enabled controller that supports the Z-Wave configuration command class. For a

complete list of adjustable configurations, visit [www.ezzwave.com/config](http://www.ezzwave.com/config)

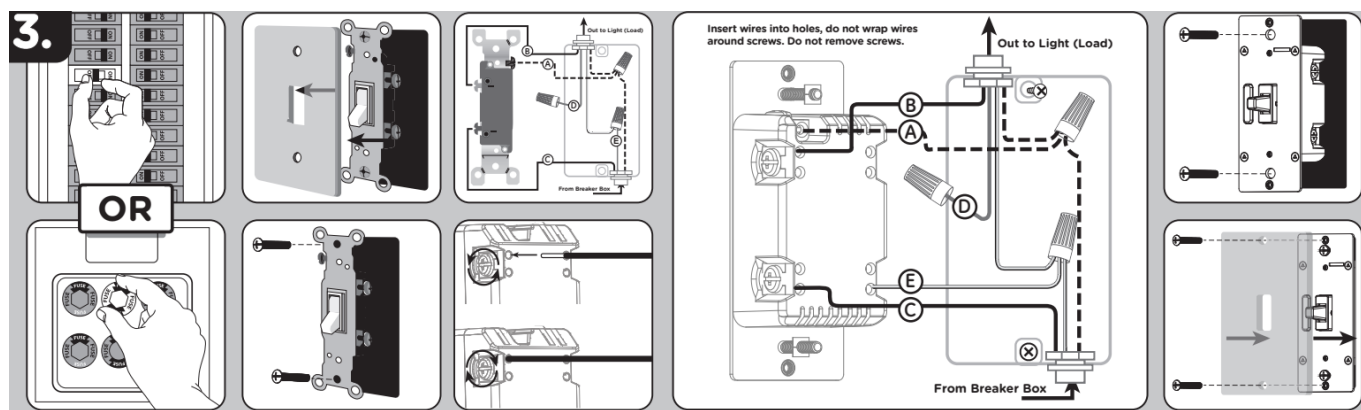


- A Ground (Greer/Bare)
- B. Line or Load (Black)
- C Line or Load (Black)
- D. Traveler Rec/Other)
- E. Neutral (White)
- F Up-press & release to turn switch on
- G. Down-press & release to turn switch off

## WARNING-SHOCK HAZARD

Turn OFF the power to the branch circuit for the switch and lighting fixture at the service panel. All wiring connections must be made with the POWER OFF to avoid personal injury and/or damage to the switch. This device is intended for installation in accordance with the National Electric Code and local regulations in the United States or the Canadian Electrical Code and local regulations in Canada. If you are unsure or uncomfortable about performing this installation, consult a qualified electrician.

## Multi-switch wiring



For 3-way installations, please refer to add-on switch (46200/59340) manual

1. Shut off power to the circuit at circuit breaker or fuse box.  
**IMPORTANT!** Verify power is OFF to switch box before continuing.
2. Remove wall plate.
3. Remove the switch mounting screws.
4. Care fully remove the switch from the switch box. DO NOT disconnect the wires.
5. There are up to five screw terminals on the switch; these are marked:
  - A. GROUND- Green/Bare
  - B. LINE or LOAD –Black (connected to power or lightin9)
  - C. LINE or LOAD – Black (connected to power or lighting)
  - D. TRAVELER Red/Other (only in 3-way installations)
  - E. NEUTRAL-White Match these screw terminals to the wires connected to the existing switch.
6. Disconnect the wires from the existing switch. Label wires according to the previous terminal connection.

### **Observe important wiring information**

**IMPORTANT!** This switch is rated for and intended to only be used with copper wire.

#### **Wire gauge requirements**

Use 14AWG or larger wires suitable for at least 80° C for supplying line (hot), load, neutral, ground and traveler connections.

#### **Wire strip length**

Attach using the enclosure's holes, strip insulation 5/8in. (16mm).UL specifies the tightening torque for the screws is 14Kgf-cm (12lbf-in).

1. Connect the green or bare copper ground wire to the GROUND terminal.
2. Connect the black wire from the light to either LINE/LOAD terminal.
3. Connect the black wire from the electrical service panel (hot) to the other LINE/LOAD terminal.
4. Connect the white wire to the NEUTRAL terminal (use included jumper wire if needed).

**NOTE:** The traveler terminal is only used for 3-way or 4-way wiring and should remain unused if the switch is being installed in a 2-way system (one switch & one load).

5. Insert switch into the switch box being careful not to pinch or crush wires.
6. Switch must be independently mounted (vertical position only).
7. Secure the switch to the box using the supplied screws.
8. Mount the wall plate.
9. Reapply power to the circuit at fuse box or circuit breaker and test the system.

### **Basic operation**

The connected light can be turned ON/OFF in two ways:

1. Manually from the front panel of the switch.
2. Remotely with a Z-Wave controller.

### **Manual control**

The switch allows the user to turn ON/OFF the connected fixture.

1. To turn the connected fixture ON, press up and release the toggle.

2. To turn the connected fixture OFF, press down and release the toggle.

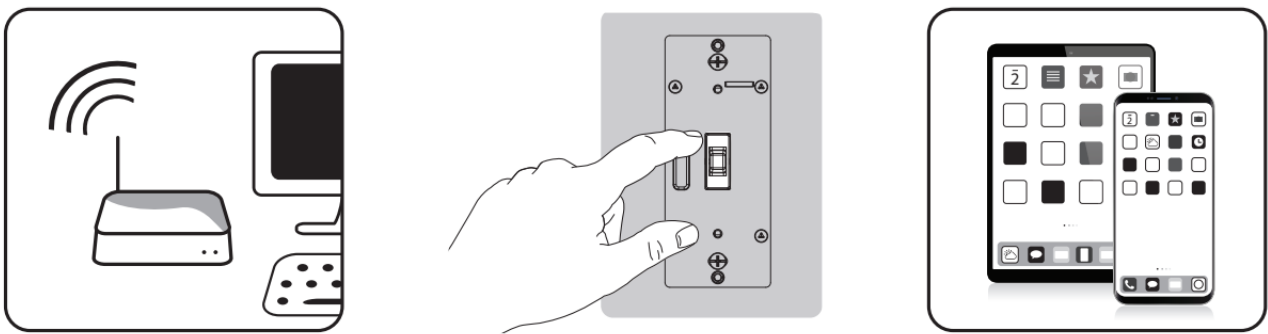
### Cycle LED light

An LED shines behind the toggle to act as a guide light or status indicator. How to cycle between options: Press up three times, then down one time quickly

1. LED is always OFF (default)
2. LED is always ON (illuminates switch in the dark)
3. LED is ON when the load is OFF (guide light in the dark)
4. LED is ON when the load is ON (indicates the switch is ON)

### Adding your device to a Z-Wave network

- 1.



Follow the instructions for your Z-Wave certified controller to add a device to the Z-Wave network.

2. Once the controller is ready to add your device, press up and release the toggle.
3. The controller's app will indicate if it has discovered the switch. If prompted by the B controller to enter the S2 security code, refer to the QR code/security number on the side of the box or the QR code label on the product (see Figure 1). Enter the 5-digit code. Please reference the controller's manual for instructions. You have complete control to turn your fixture ON/OFF and create groups, scenes, schedules and interactive automations programmed by your controller. If your Z-Wave certified controller features remote access, you can control your fixture from your mobile devices.

### To remove and reset the device

1. Follow the instructions for your Z-Wave certified controller to remove a device from the Z-Wave network
2. Once the controller is ready to remove your device, press up and release the toggle

### To return your switch to factory defaults

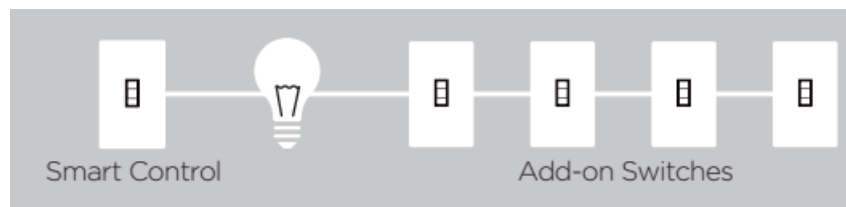
Quickly press ON (up) button three times, then immediately press the OFF (down) button three times

**NOTE:** This should only be used if your network's primary controller is missing or otherwise inoperable

**NOTE:** Smart start enabled products can be added into a Z-Wave network by scanning the QR code on the product with a controller providing Smart Start Inclusion. No further action is required and the Smart Start product will be added automatically within 10 minutes of being switched on in the network vicinity

### Convert any smart control to a multi-location switch

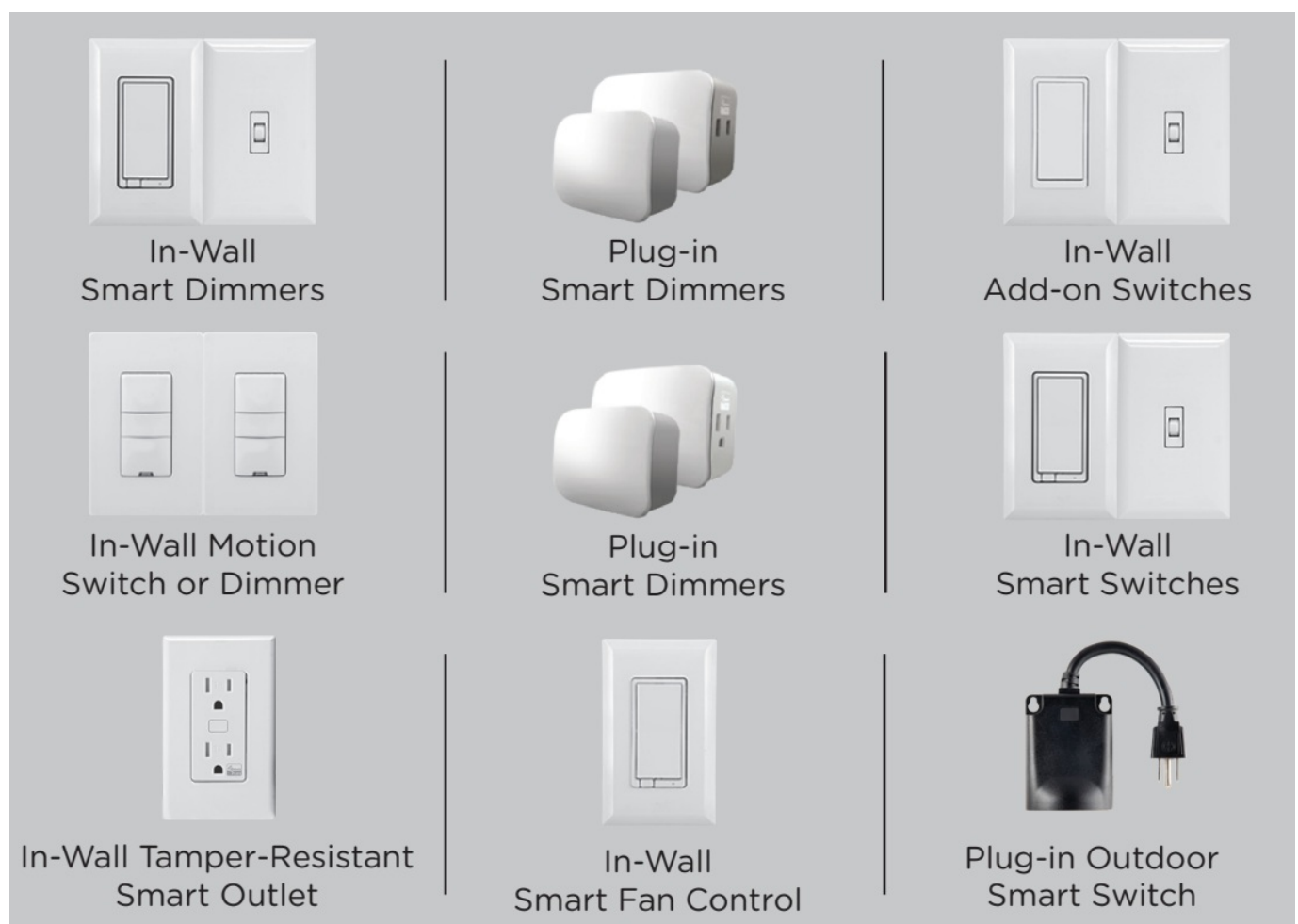
For a list of compatible devices, visit [ezzwave.com](http://ezzwave.com)



TO purchase an add-on switch or for more details, visit [ezaddonswitch.com](http://ezaddonswitch.com).



Purchase additional items at [EZzwave.com](http://EZzwave.com) or visit your local retailer.



## WARRANTY

Jasco Products Company warrants this product to be free from manufacturing defects for five years from the

original date of consumer purchase. This warranty is limited to the repair or replacement of this product only and does not extend to consequential or incidental damage to other products that may be used with this product. This warranty is in lieu of all other warranties, expressed or implied. Some states do not allow limitations on how long an implied warranty lasts or permit the exclusion or limitation of incidental or consequential damage, so the above limitations may not apply to you. This warranty gives you specific rights, and you may also have other rights which vary from state to state. Please contact our U.S.-based Consumer Care at 1-800-654-8483 (option T)N between period 7AM-8PM, M-F, Central Time or [www.byjasco.com](http://www.byjasco.com) if the unit should prove defective within the warranty.

## FCC STATEMENT


This device complies with Part 15 of the FCC and Industry Canada license-exempt RSS standards. Operation is subject to the following two conditions: (1) this device may not cause harmful interference, and (2) this device must accept any interference received, including interference that may cause undesired operation. FCC NOTE: The manufacturer is not responsible for any radio or TV interference caused by unauthorized modifications to this equipment. Such modifications could void the user's authority to operate the equipment.

**NOTE:** This equipment has been tested and found to comply with the limits for a Class B digital device, pursuant to Part 15 of the FCC Rules. These limits are designed to provide reasonable protection against harmful interference in a residential installation. This equipment generates, uses, and can radiate radio frequency energy, and if not installed and used in accordance with the instructions, may cause harmful interference to radio communications. However, there is no guarantee interference will not occur in a particular installation. If this equipment does cause harmful interference to radio or television reception, which can be determined by turning the equipment off and on, the user is encouraged to try to correct the interference by one or more of the following measures:

- Reorient or relocate the receiving antenna.
- Increase the separation between the equipment and receiver.
- Connect the equipment into an outlet on a circuit different from which the receiver is connected.
- Consult the dealer or an experienced radio/TV technician for help.

**Important note:** To comply with the FCC RF exposure compliance requirements, no change to the antenna or the device is permitted. Any change to the antenna or the device could result in the device exceeding the RF exposure requirements and void user's authority to operate the device.

## Documents / Resources

	<p><a href="#">enbrighten 58436 Z-Wave In-Wall Smart Toggle Switch</a> [pdf] Instruction Manual ZWA4012DV, QOBZWA4012DV, 58436 Z-Wave In-Wall Smart Toggle Switch, 58436, Z-Wave In-Wall Smart Toggle Switch</p>
---	--