



# EMTEK Two Point Lock Single Re-Pinning Cylinder Installation Guide

[Home](#) » [Emtek](#) » EMTEK Two Point Lock Single Re-Pinning Cylinder Installation Guide 

## EMTEK Two Point Lock Single Re-Pinning Cylinder Installation Guide

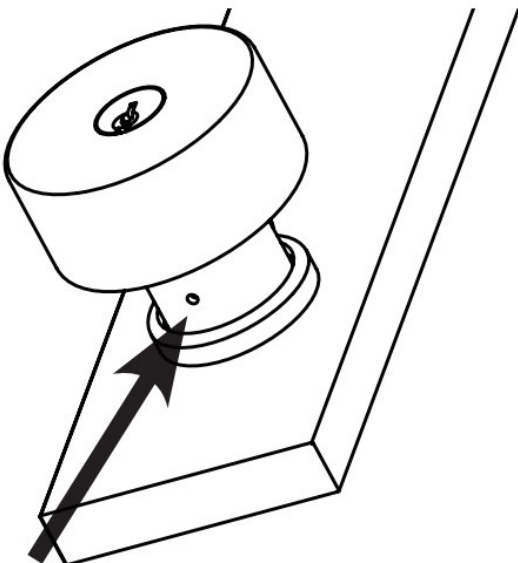
### Contents

- [1 Re-Pinning Cylinder \(OPTIONAL\)](#)
- [2 Lock Assembly](#)
- [3 Preparation](#)
- [4 Documents / Resources](#)
- [5 Related Posts](#)

### Re-Pinning Cylinder (OPTIONAL)

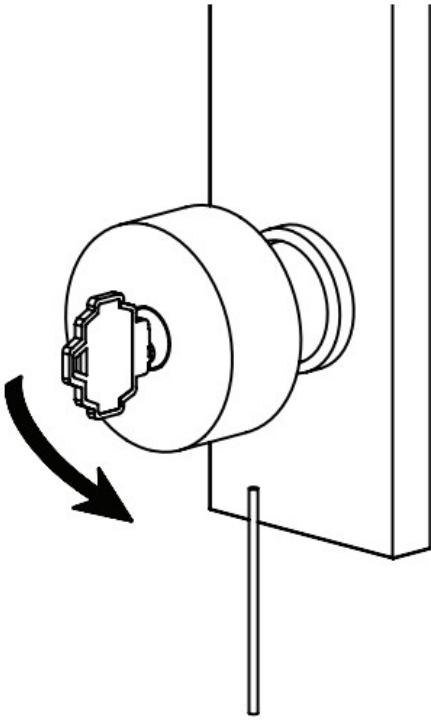
#### • STEP 1

Small hole should face down.



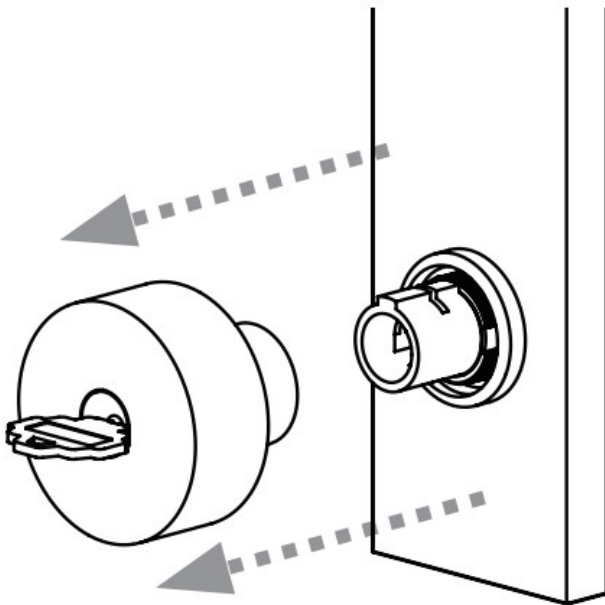
#### • STEP 2

Rotate key counterclockwise 90° while pressing wire into hole.



• **STEP 3**

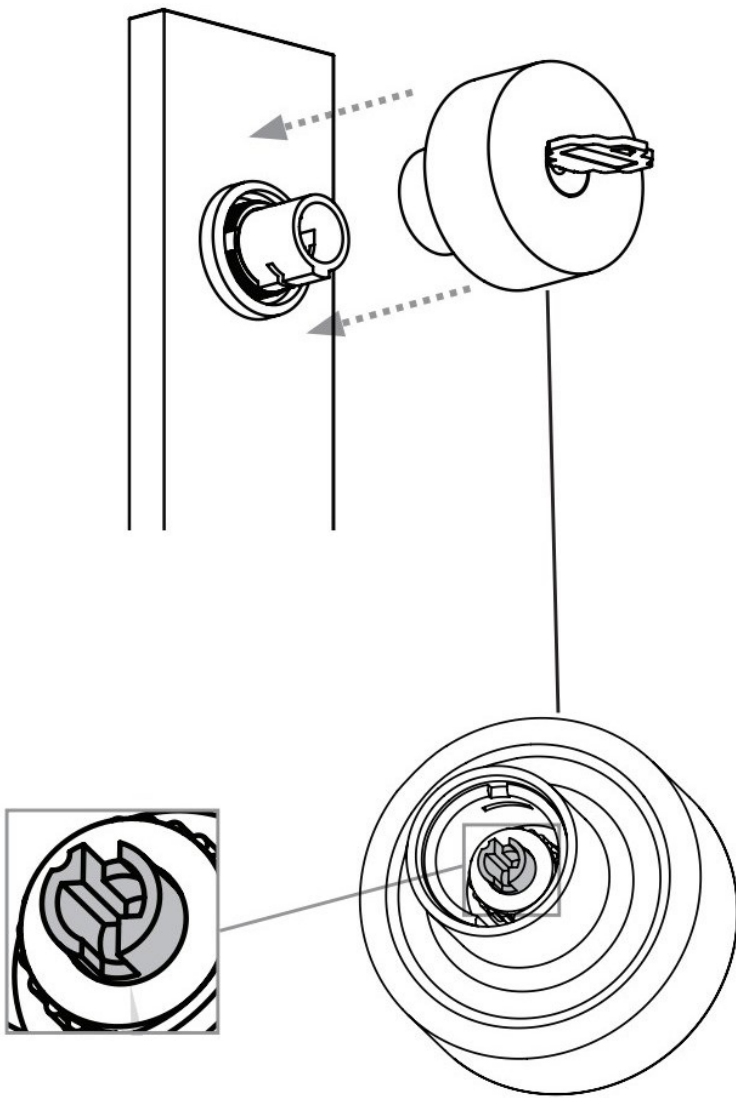
Slide lever/knob off stem.



• **STEP 4**

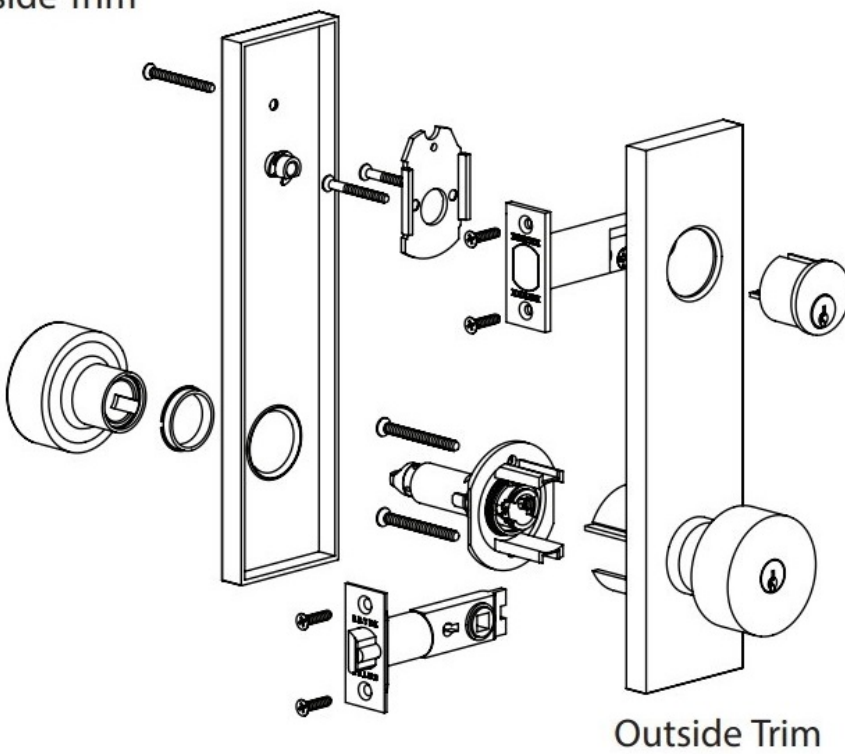
After re-pinning cylinder, insert lever/knob onto stem.

Before inserting lever/knob onto stem, make sure cylinder tailpiece is vertical as shown.



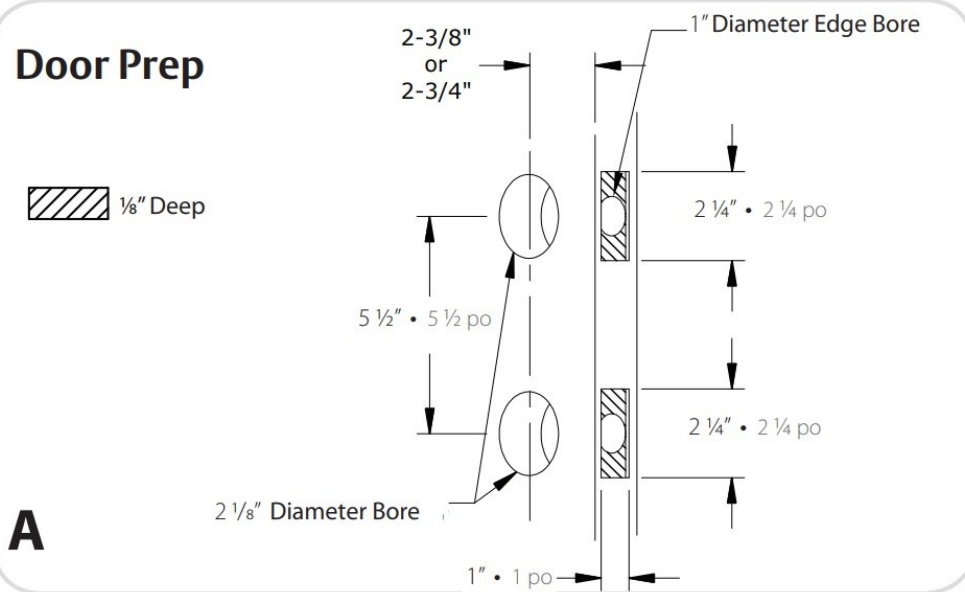
## Lock Assembly

### Inside Trim



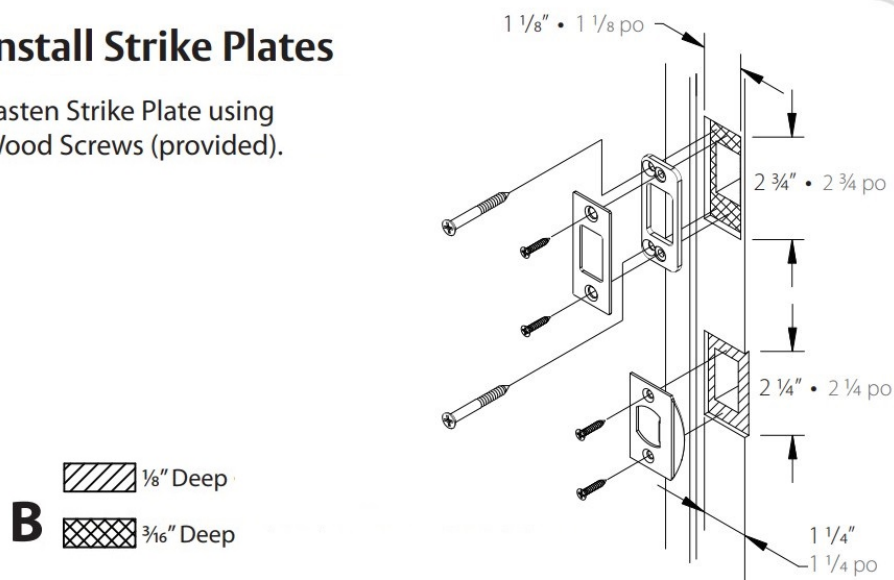
## Preparation

### Door Prep



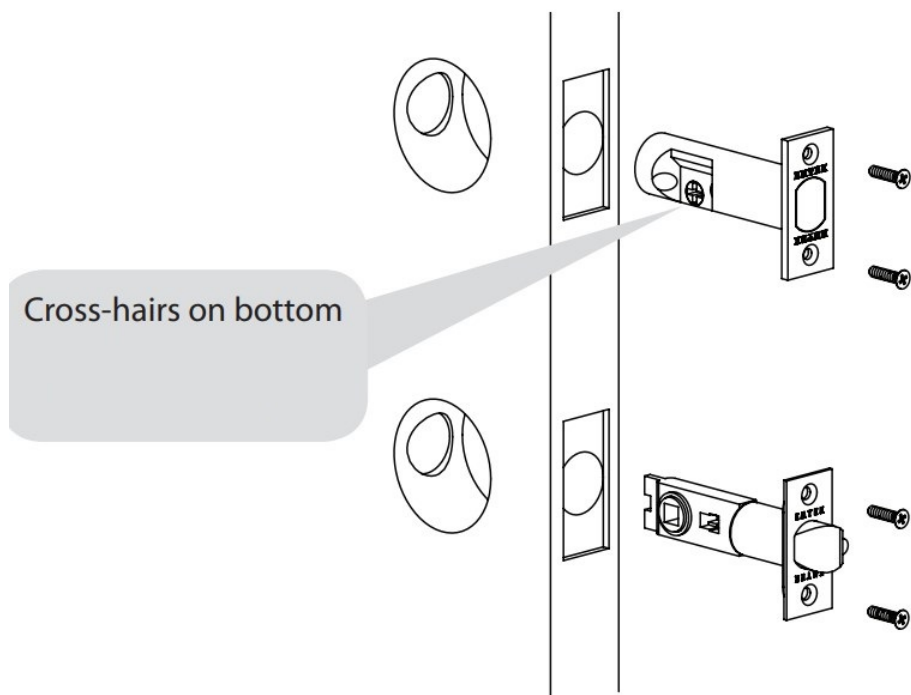
### Install Strike Plates

Fasten Strike Plate using Wood Screws (provided).



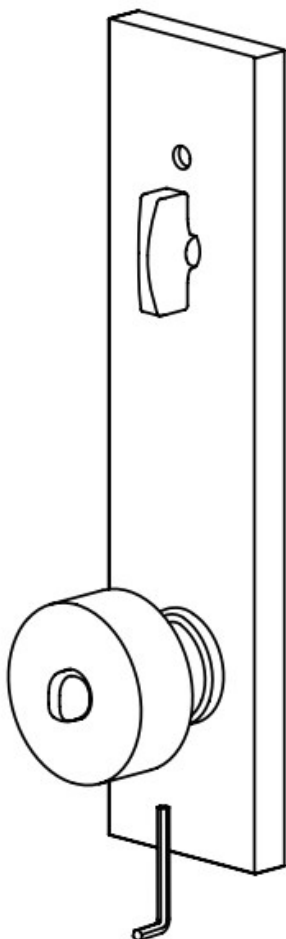
#### 1. Install Bolt and Latch

Fasten Bolt and Latch using #8 x 3/4" Wood Screws (provided).



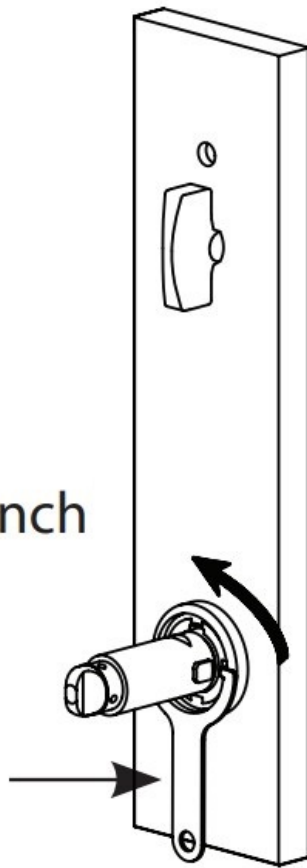
## 2. Remove Inside Trim Plate

**STEP 1:** Remove inside lever/knob by loosening set screw w/ hex wrench (provided).



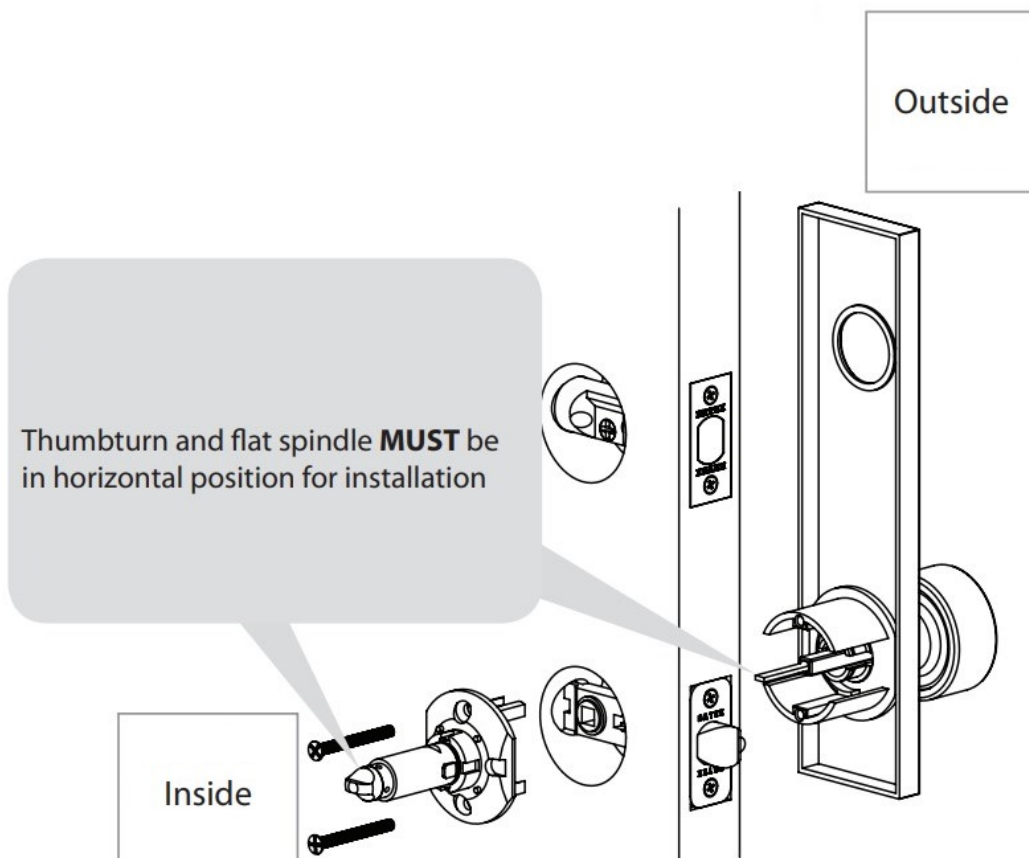
**STEP 2:** Unthread nut counterclockwise to remove from Interior Plate before installing on door.

Spanner wrench  
(provided).



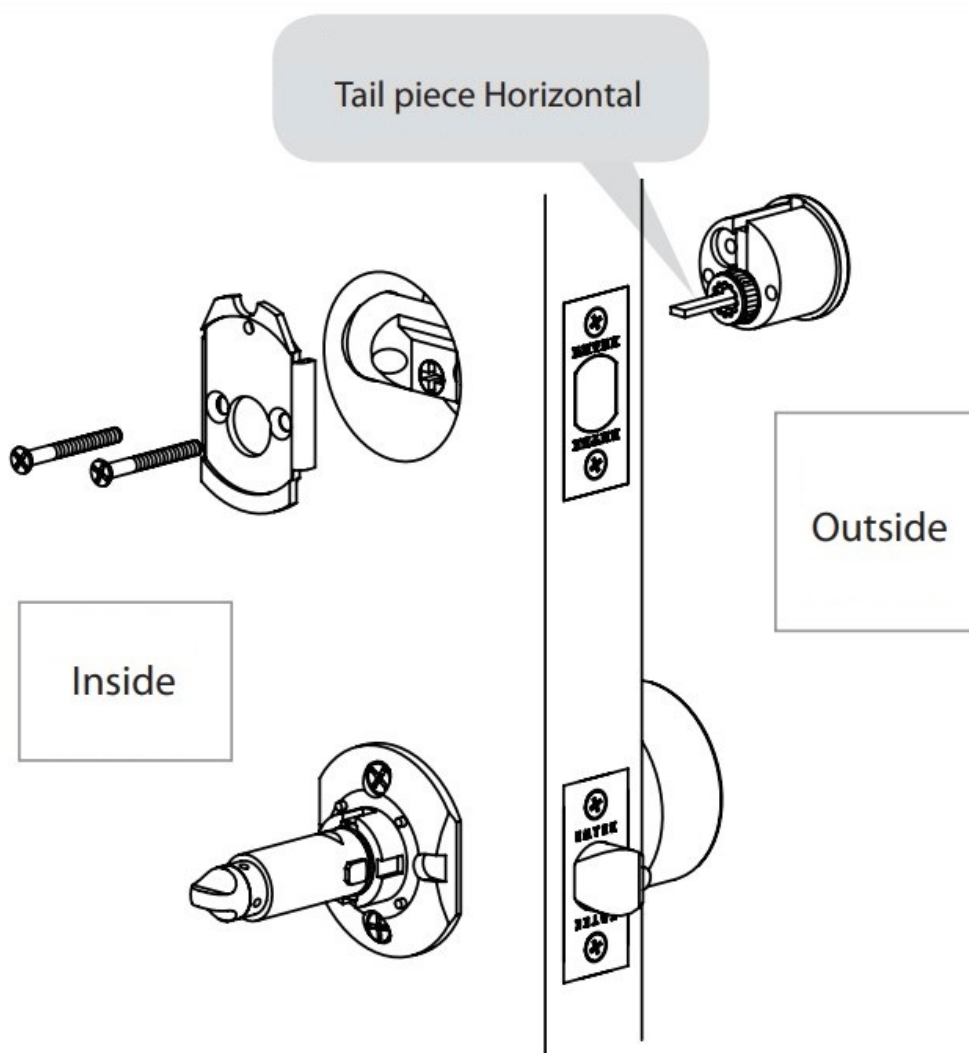
### 3. Install Outside Trim Plate

Fasten Outside Trim Plate using two #8-32 x 1½" Pan Head Machine Screws (provided).

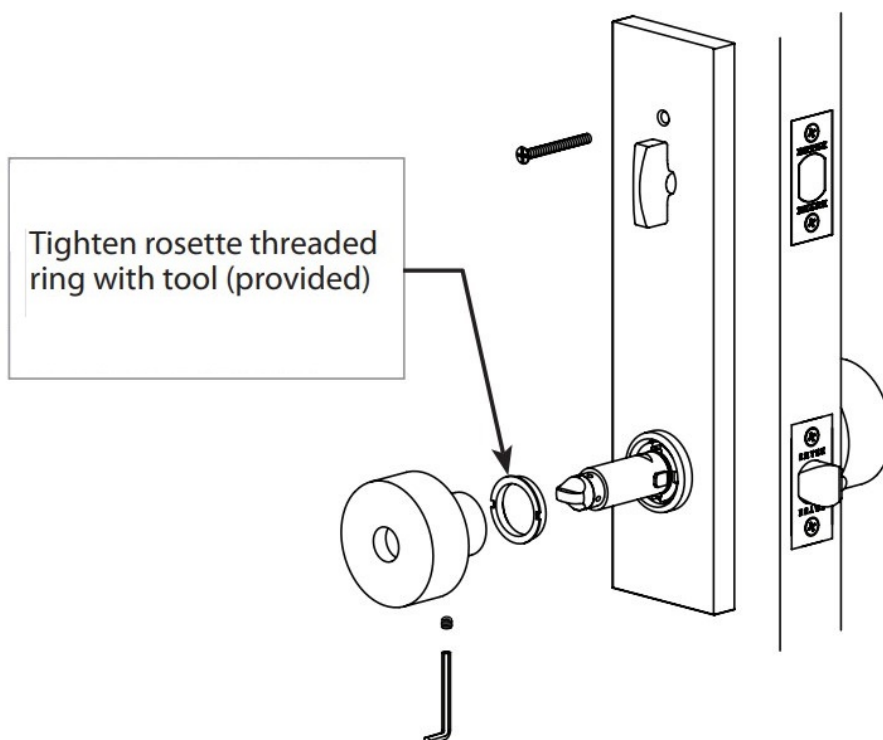


### 4. Install Inside Trim Plate

**STEP 1:** Install deadbolt using flat head screws.

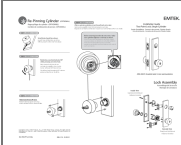


**STEP 2:** After interior grip is installed, tighten set screw with hex wrench (provided)





## Documents / Resources



[EMTEK Two Point Lock Single Re-Pinning Cylinder](#) [pdf] Installation Guide  
Re-Pinning Cylinder, Re-Pinning, Cylinder, Two Point Lock Single Cylinder, Two Point Lock Cylinder, Single Cylinder, Two Point Lock Single Re-Pinning Cylinder

Manuals+