



EMS fireCell Wireless Manual Call Point Installation Guide

[Home](#) » [EMS](#) » EMS fireCell Wireless Manual Call Point Installation Guide 

Contents

- [1 EMS firewall Wireless Manual Call Point](#)
- [2 Product Information](#)
- [3 Specification](#)
- [4 Regulatory Information](#)
- [5 Product Usage Instructions](#)
- [6 Pre-installation](#)
- [7 Components](#)
- [8 Fix mounting plate](#)
- [9 Power device](#)
- [10 Device locking](#)
- [11 Configuration](#)
- [12 Device activation](#)
- [13 Device resetting](#)
- [14 Specification](#)
- [15 Regulatory information](#)
- [16 Documents / Resources](#)
 - [16.1 References](#)
- [17 Related Posts](#)



EMS firewall Wireless Manual Call Point



Product Information

Wireless Manual Call Point (ApolloFront)

The Wireless Manual Call Point (Apollo Front) is a device used in fire detection and alarm systems. It is a wireless call point that operates on a frequency of 868 MHz and has an output transmitter power that auto-adjusts from 0 to 14 dBm. The device is powered by six AA alkaline batteries (Panasonic LR6AD Powerline / Varta 4006 Industrial) and has an IP rating of IP24. The device has a signaling protocol of X and weighs 0.35 kg. It is designed for indoor use and conforms to European Union Directives EN54-11:2001 and EN54-25:2008.

Specification

- **Operating Temperature:** 0°C to +50°C
- **Storage Temperature:** -20°C to +70°C
- **Humidity:** 0 to 95% non-condensing
- **Operating Frequency:** 868 MHz
- **Output Transmitter Power:** Auto-adjusting 0 to 14 dBm (0 to 25 mW)
- **Signaling Protocol:** X
- **Dimensions (W x H x D):** 90 x 98 x 72.5 mm
- **Weight:** 0.35 kg
- **Location:** Type A – For indoor use

Regulatory Information

The Wireless Manual Call Point (Apollo Front) is manufactured by Carrier Manufacturing Poland Sp. z o.o. and is compliant with Directive 2014/53/EU. The device conforms to European Union Directives EN54-11:2001 and EN54-25:2008. The full text of the EU Declaration of Conformity is available at the following internet address: www.emsgroup.co.uk. The product must be disposed of at designated collection points and batteries must be

disposed of in an environmentally friendly manner according to local regulations.

Product Usage Instructions

Before installation, ensure that the installation conforms to applicable local installation codes and is carried out by a fully trained competent person. The following are the steps for installation and usage of the Wireless Manual Call Point (Apollo Front):

Installation

1. Fix the mounting plate using the fixing screw.
2. Attach the wireless call point to the mounting plate.
3. Insert six AA alkaline batteries (Panasonic LR6AD Powerline / Varta 4006 Industrial) into the device. Ensure that the battery type is correct as fitting an incorrect battery type can invalidate the product certification and result in poor performance.

Device Activation

1. Lift the transparent cover.
2. Press the element to activate the device.
3. The alarm LED will illuminate and a fire event will be displayed on the control panel.

Device Resetting

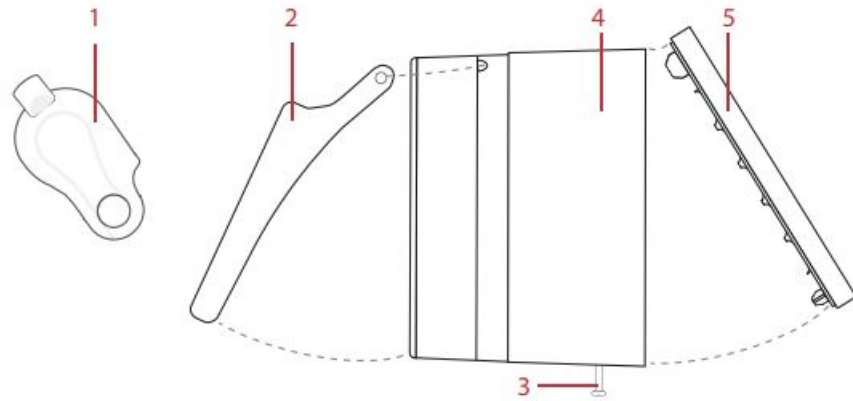
1. Lift the transparent cover.
2. Turn the reset key clockwise to reset the device.
3. The element will return to the normal position and the alarm LED will illuminate.

Note: The label on commissioning must be removed before usage and resetting should only be carried out by a fully trained competent person.

Pre-installation

- Installation must conform to applicable local installation codes and should only be installed by a fully trained competent person.
- Ensure that the device is installed as per the site survey.
- The use of a non-metallic spacer should be considered if mounting the device on to a metal surface.
- Do NOT Press the Log On button on a pre-programmed device, as this will cause communication with the Control Panel to be lost. Should this happen, delete the device from the system and add it back on.
- This device contains electronics that may be susceptible to damage from Electrostatic Discharge (ESD). Take appropriate precautions when handling electronic boards.

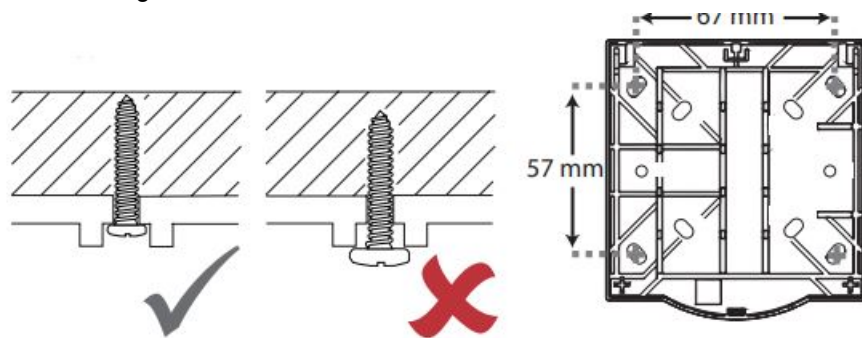
Components



1. Reset key,
2. Transparent cover,
3. Fixing screw,
4. Wireless call point,
5. Mounting plate

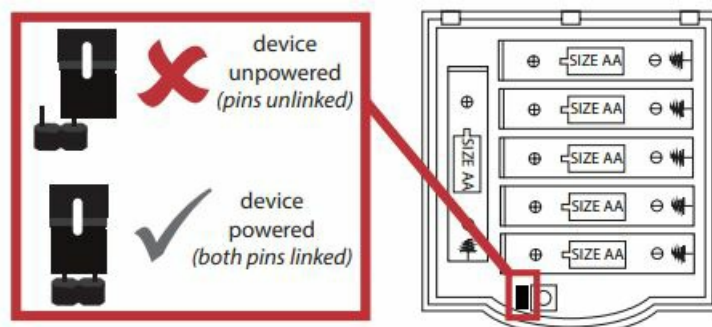
Fix mounting plate

- Remove the mounting plate from the wireless call point. See Step 5 for more information on unlocking the device.
- Ensure the mounting plate is fitted in the orientation shown.
- Use both mounting holes.
- Use suitable fasteners and fixings.



Power device

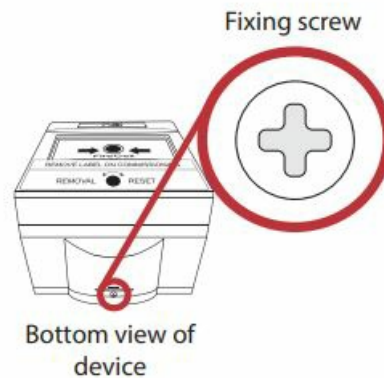
- When fitting/replacing batteries; observe correct polarity, using only specified batteries.
- Connect the power jumper across the PIN header.



- Once powered, reassemble the device.

Device locking

- To open the call point, loosen the fixing screw, then slide the call point up, away from the mounting plate.
- When reassembling, observe the hinged connection located on the devices top edge first, prior to closing the unit. Finally lock the call point into the mounting plate by tightening the fixing screw.

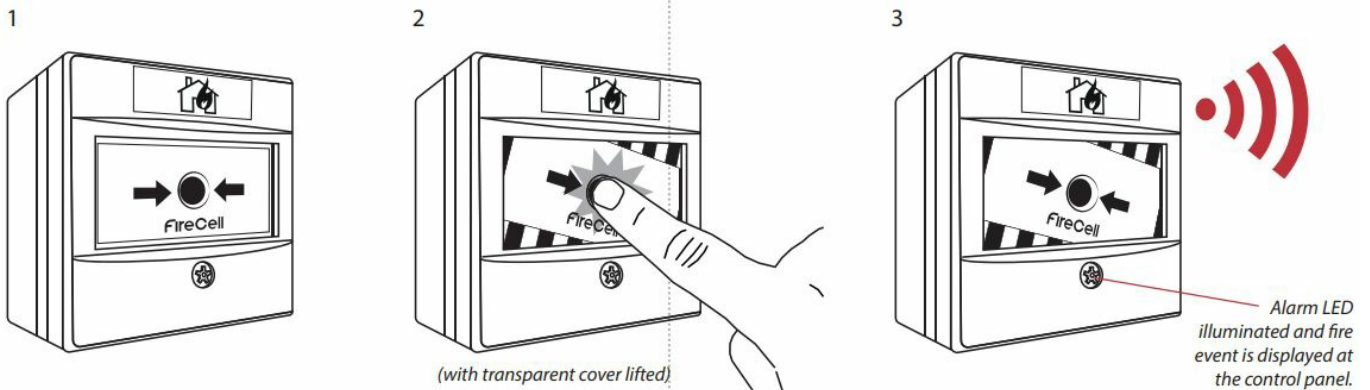


Configuration

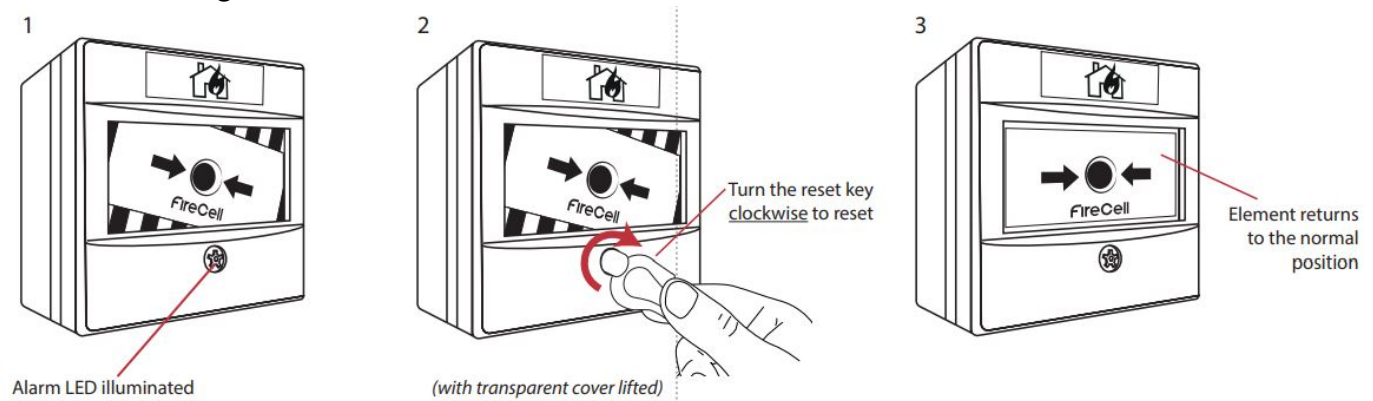
- The device's loop address is configured within the user interface's menu structure.
- Refer to the programming manual for full programming details.
- **FireCell** = MK98
- **Fusion** = TSD062
- **WZM** = TSD143
- Free to download from www.emsgroup.co.uk



Device activation



Device resetting



Specification

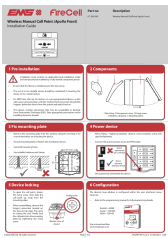
- **Operating temperature** -10 to +55 °C
- **Storage temperature** 5 to 30 °C
- **Humidity** 0 to 95% non-condensing
- **Supply** 6x AA alkaline (Panasonic LR6AD Powerline/ Varta 4006 Industrial)
 - **CAUTION!** Fitting of an incorrect battery type invalidates the product certification and may result in poor performance.
- **IP rating** IP24
- **Operating frequency** 868 MHz
- **Output transmitter power** Auto-adjusting 0 to 14 dBm (0 to 25 mW)
- **Signaling protocol** X
- **Dimensions (W x H x D)** 90 x 98 x 72.5 mm
- **Weight** 0.35 kg
- **Location** Type A: For indoor use

Regulatory information

- **Manufacturer:** Carrier Manufacturing Poland Sp. z o.o. Ul. Kolejowa 24. 39-100 Ropczyce, Poland
- **Year of manufacture:** See device serial number labeled
- **Certification**
- **Certification body:** 0905
- **CPR DoP:** 0359-CPR-00694
- **Approved to:** EN54-11:2001. Incorporating Amendment No. 1 and Corrigendum No. 1. Fire detection and fire alarm systems. Part 11: Manual call points.
 - EN54-25:2008. Incorporating corrigenda September 2010 and March 2012. Fire detection and fire alarm systems. Part 25: Components using radio links.
- **European Union Directives:** EMS declares that this device is in compliance with Directive 2014/53/EU. The full text of the EU Declaration of Conformity is available at the following internet address:
www.emsgroup.co.uk
- 2012/19/EU (WEEE directive): Products marked with this symbol cannot be disposed of as unsorted municipal waste in the European Union. For proper recycling, return this product to your local supplier upon the purchase of equivalent new equipment, or dispose of it at designated collection points. For more information see www.recyclethis.info Dispose of your batteries in an environmentally friendly manner according to your local

regulations.

Documents / Resources



[EMS fireCell Wireless Manual Call Point](#) [pdf] Installation Guide

Product Name Wireless Manual Call Point Apollo Front, Model Number FC-200-003, fireCell Wireless Manual Call Point, fireCell, Call Point, fireCell Call Point, Wireless Manual Call Point

References

-  [Leading brand of Wireless Fire alarms systems - EMS Firecell](#)
-  [HOME](#)