



EMOS ZC0108 LED Orientation Luminaire Installation Guide

[Home](#) » [EMOS](#) » EMOS ZC0108 LED Orientation Luminaire Installation Guide 

Contents

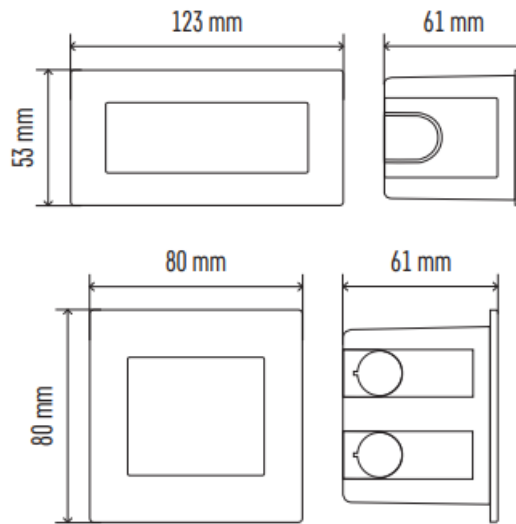
- [1 EMOS ZC0108 LED Orientation Luminaire](#)
- [2 OVERVIEW](#)
- [3 INSTALLATION](#)
- [4 GB | LED Orientation Luminaire – Built-in](#)
- [5 Documents / Resources](#)
 - [5.1 References](#)
- [6 Related Posts](#)



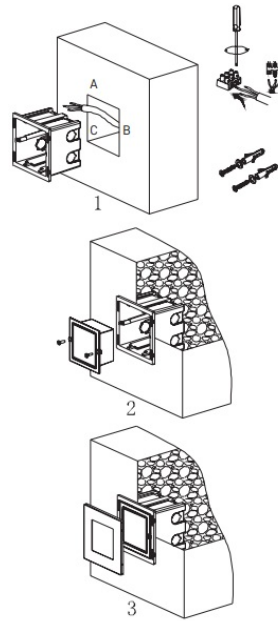
EMOS ZC0108 LED Orientation Luminaire



OVERVIEW



INSTALLATION



GB | LED Orientation Luminaire – Built-in

The LED Luminaire is designed to be installed onto a solid base in indoor or outdoor areas. Enclosure: IP65 – for outdoor environments.

Inspect the Luminaire before use. If any part is damaged, do not use the product. Before assembly, make sure power supply is disconnected. In case of malfunction, do not try to repair or dismantle the Luminaire. The LEDs are not replaceable. Failure to observe any instructions provided in the manual may result in personal injury or property damage.

Installation

The installation box must be firmly fixed in the wall/base to prevent its damaging. Attach the Luminaire securely to a fixed base in the wall. Connect the power cable for connecting to a 230 V~ power network. The conductor must not be connected to power supply at the time of Luminaire installation. The power cable must be connected to the Luminaire only by a professional with qualification in accordance with Decree No. 50/1978 Coll., as amended, at the least a professional knowledgeable in line with section 5 of Decree No. 50/1978 Coll., as amended.

WARNING

- The Luminaire is only suited for fixed installation.
- The Luminaire can only be connected to an electrical network with installation and protection in line with valid regulations and standards.
- Before interfering with the Luminaire or performing maintenance and repair, the Luminaire must be disconnected from the power network. This must only be performed by a person knowledgeable in valid regulations on qualification for such activities.
- Protection against dangerous contact voltage is ensured through earthing.
- Immediately take the Luminaire out of operation if any portion of the Luminaire becomes damaged.
- LEDs inside the Luminaire are not replaceable.
- Do not interfere with the internal wiring of the Luminaire.
- Never cover the Luminaire with materials for thermal insulation.
- If the Luminaire cover becomes damaged, do not use the Luminaire and immediately replace the cover with a new one.


Type	Power supply	Input power	Luminous flux	Chromatic temperature	Product size	Installation opening
ZC0108	220–240 V~, 50/60 Hz	1.5 W	60 lm	3 000 K	123 × 53 mm	113 × 43 × 65 mm
ZC0109	220–240 V~, 50/60 Hz	2 W	65 lm	3 000 K	80 × 80 mm	70 × 70 × 65 mm

Do not cover the lamp with material for thermal insulation

EMOS spol. s r.o. declares that the ZC0108, ZC0109 is in compliance with the essential requirements and other relevant provisions of Directive. The device can be freely operated in the EU. The Declaration of Conformity can be found at <http://www.emos.eu/download>.



Do not dispose with domestic waste. Use special collection points for sorted waste. Contact local authorities for information about collection points. If the electronic devices would be disposed on landfill, dangerous substances may reach groundwater and subsequently food chain, where it could affect human health.

Documents / Resources

	<p>EMOS ZC0108 LED Orientation Luminaire [pdf] Installation Guide ZC0108, ZC0109, ZC0108 LED Orientation Luminaire, ZC0108, LED Orientation Luminaire</p>
---	---

References

- [Ke stažení - EMOS | Elektro eshop a velkoobchod](#)
- [ist.lm](#)

-  [EMOS | Elektro eshop a velkoobchod](#)[EMOS | Elektro eshop a velkoobchod](#)
-  [Ke stažení - EMOS | Elektro eshop a velkoobchod](#)[EMOS | Elektro eshop a velkoobchod](#)