



# EMERSON Supervisory and E2E Controller Weather ADF and DSC Weather Extension Module Instruction Manual

[Home](#) » [Emerson](#) » EMERSON Supervisory and E2E Controller Weather ADF and DSC Weather Extension Module Instruction Manual 



## Contents

- [1 Overview](#)
- [2 Installing the Weather Extension Module – ADF \(Supervisory Controllers\)](#)
- [3 Installation Steps](#)
- [4 Installing the Weather Extension Module – DSC \(E2E Controllers\)](#)
- [5 License Key Installation](#)
- [6 Rebooting to Complete License Key Activation](#)
- [7 Documents / Resources](#)
  - [7.1 References](#)
- [8 Related Posts](#)

## Overview

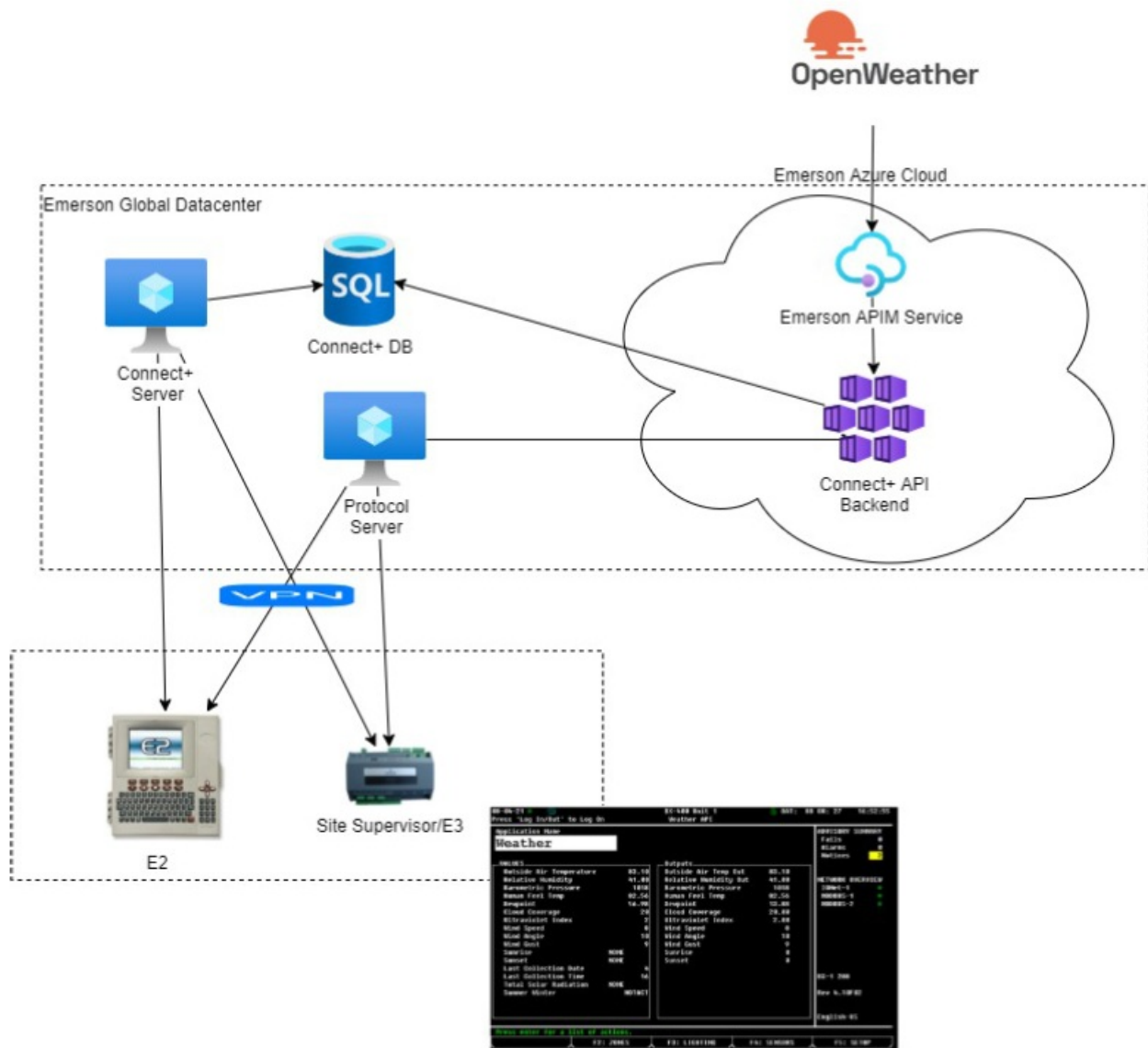
This document explains how to install the Weather Extension Module onto Supervisory and E2E controllers.

## Weather ADF and DSC Versions

ADF and DSC Names	Controller Type	Supported Versions
531-0300.adf	E3/Site Supervisor	2.16F02 and later
527-0901.dsc	E2E	4.01 and later

## Connect+ API Deployment

### Connect+ API Deployment – Emerson Hosted



## Installing the Weather Extension Module – ADF (Supervisory Controllers)

An ADF is an Application Description File. Contact your Sales representative or Customer Service to obtain the Weather ADF.

This can be uploaded on a Supervisory controller using the File Management screen. A license key is NOT required to activate the single instance application after the ADF has been uploaded. Email: [Solutions.CustomerService@Emerson.com](mailto:Solutions.CustomerService@Emerson.com)

### Prerequisites

You will need the following:

1. The Weather Extension Module built for your version of Supervisory controller firmware.


## Installation Steps

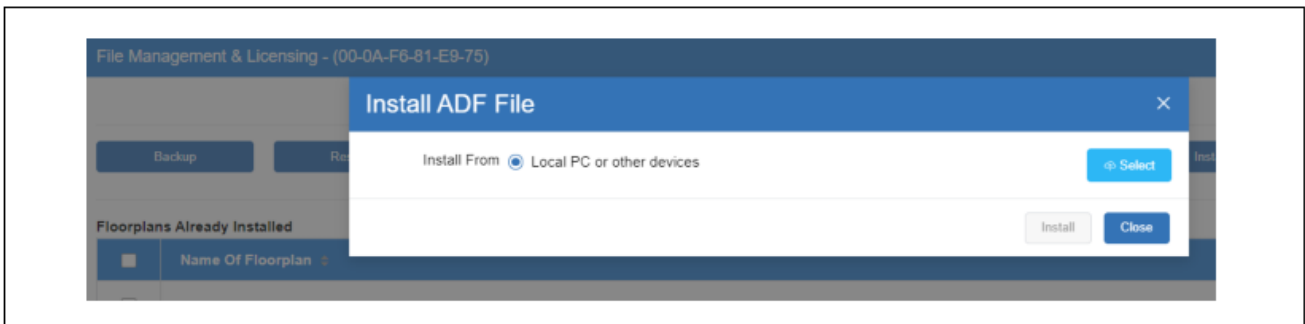
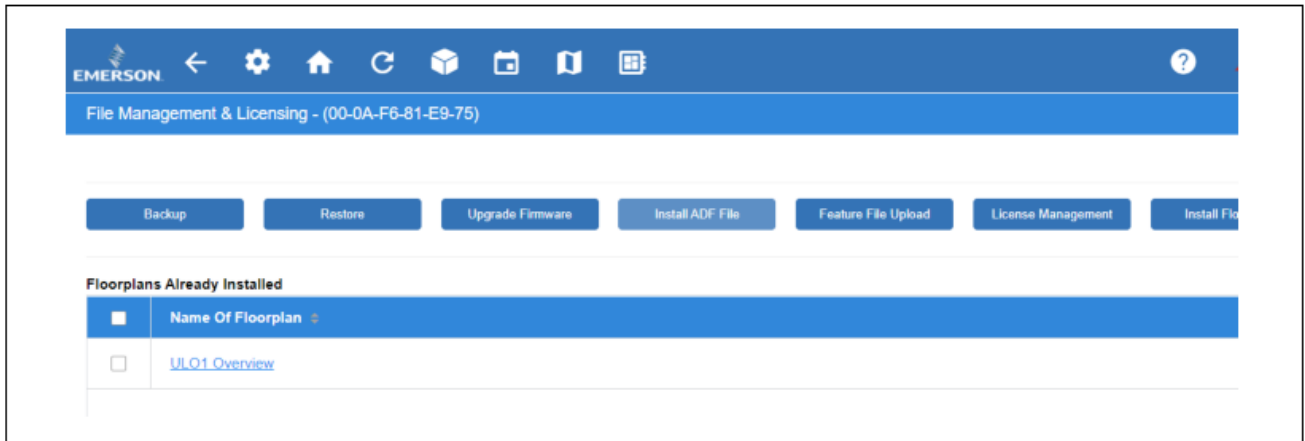
### Step 1 – Obtain ADF and License

Obtain the correct ADF for the Supervisory controller firmware version on the target unit.

### Step 2 – Installing ADF

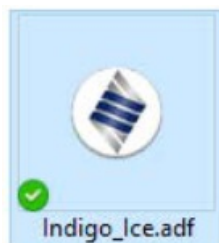
Install the Weather Extension Module ADF onto the Supervisory controller using the Install ADF File button and upload the features of the Supervisory controller.

1. First, go to the gear icon  > Configure System> File Management & Licensing> Install ADF File button.
2. Click Install ADF File then click Select.

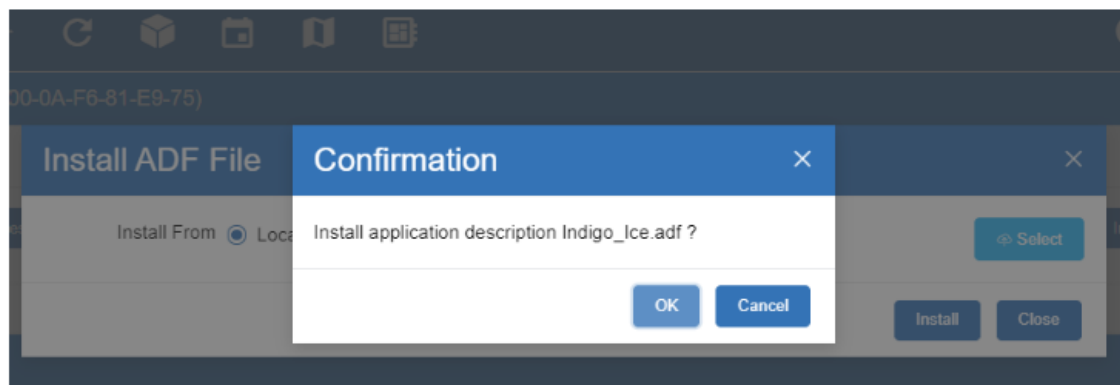
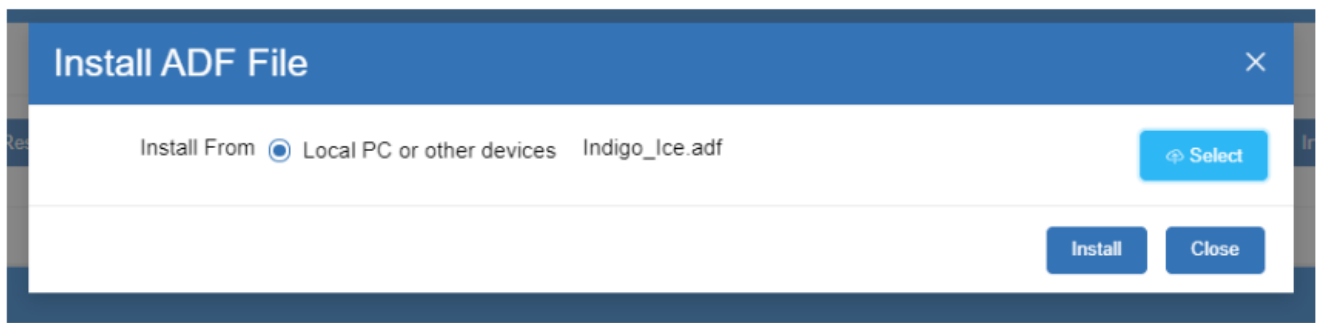


### Step 3 – Browsing for the ADF on PC

1. Select the ADF on your PC. (For this example, Indigo\_Ice.adf is used).

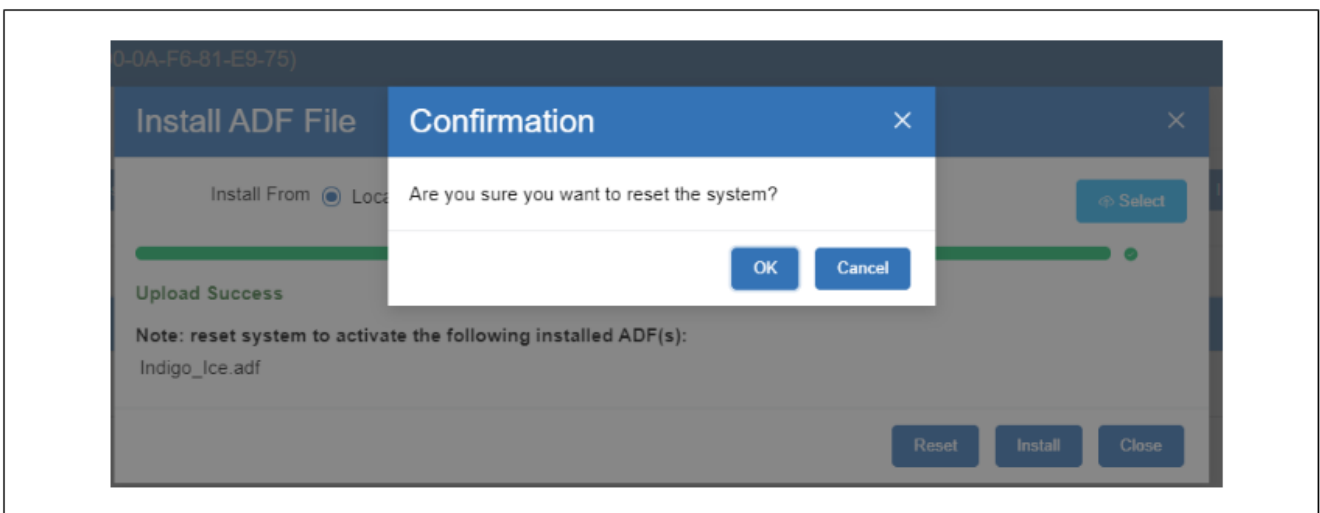
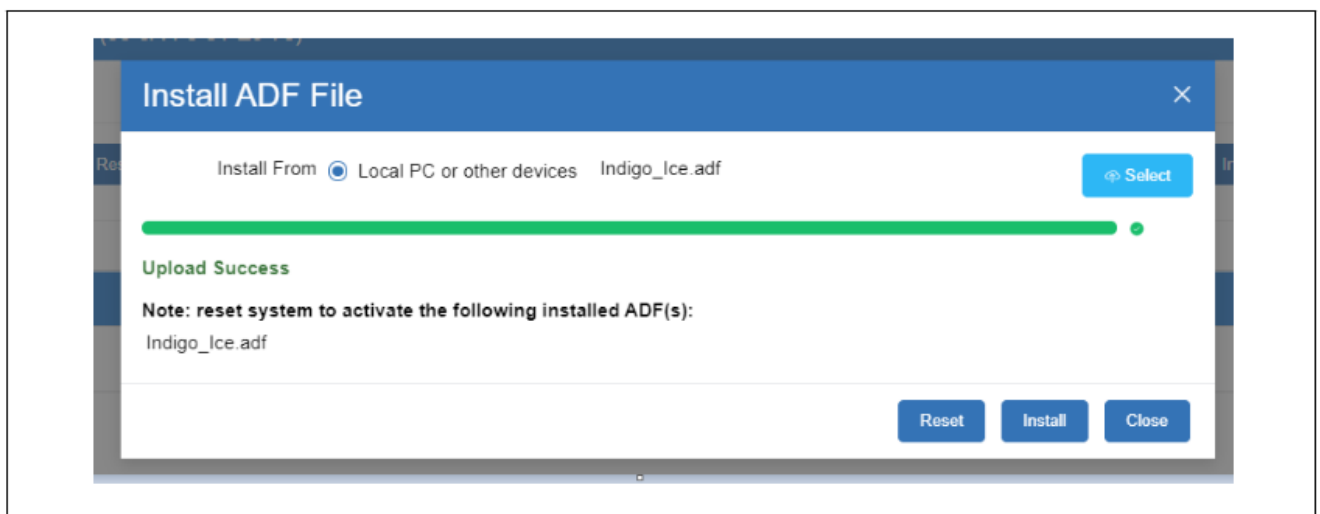


2. Click Install then confirm OK.



## Step 4 – Loading the ADF

1. Once the ADF loads, click Reset then OK to reset system.



## Installing the Weather Extension Module – DSC (E2E Controllers)

A DSC is an Description File. Contact your Sales representative or Customer Service to obtain the Weather DSC. The DSC can be uploaded on an E2E controller using UltraSite. A license key IS required to activate the single instance application after the DSC has been uploaded. Email: [Solutions.CustomerService@Emerson.com](mailto:Solutions.CustomerService@Emerson.com) or contact Emerson Customer Service.

## Prerequisites

You will need the following:

1. The Weather Extension Module built for your version of Supervisory controller firmware.

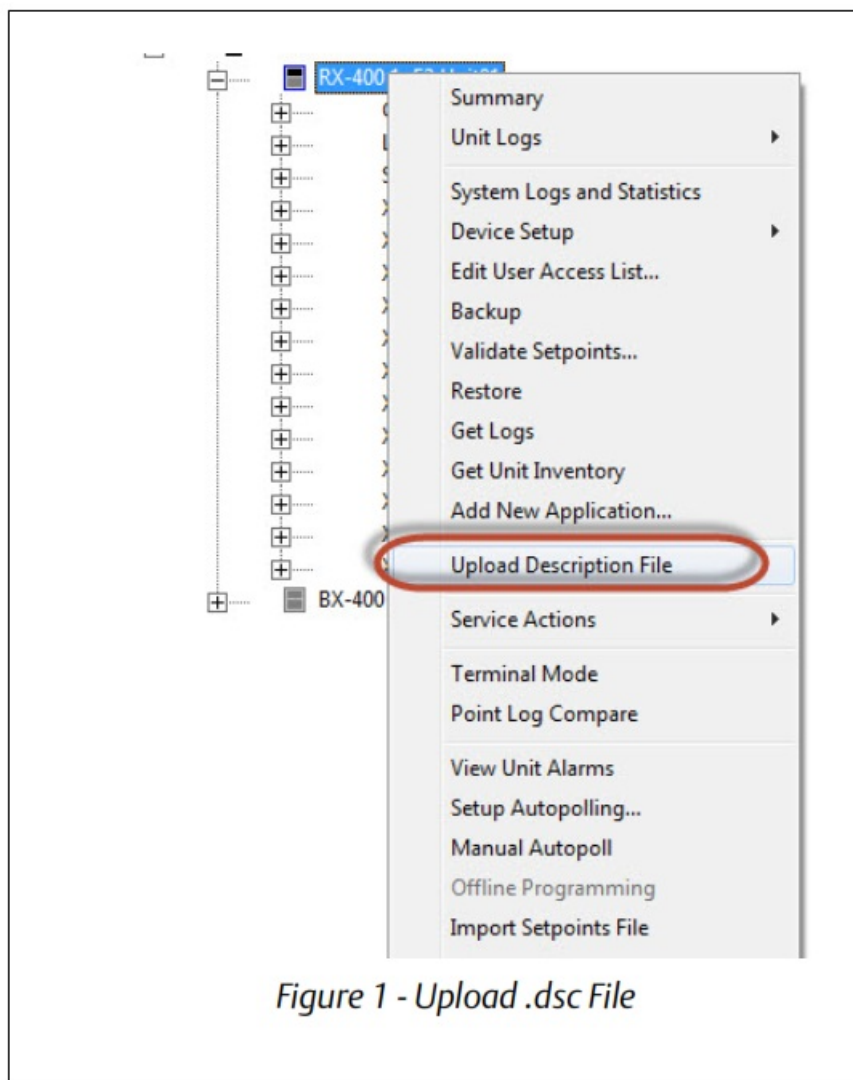
## Installation Steps

### Step 1 – Obtain DSC and License

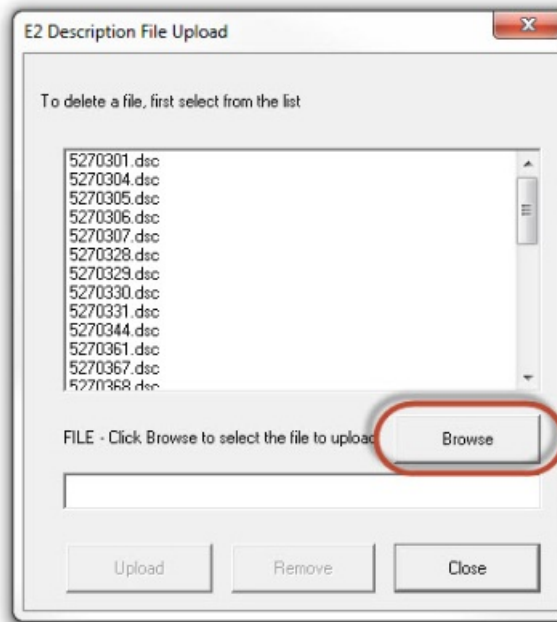
Obtain the correct DSC for the Supervisory controller firmware version on the target unit.

### STEP 2: Upload the Description (.dsc) File (xxx-xxxx) to the E2E Controller

1. Select the controller in UltraSite.
2. Right-click the controller and select Upload Description File:

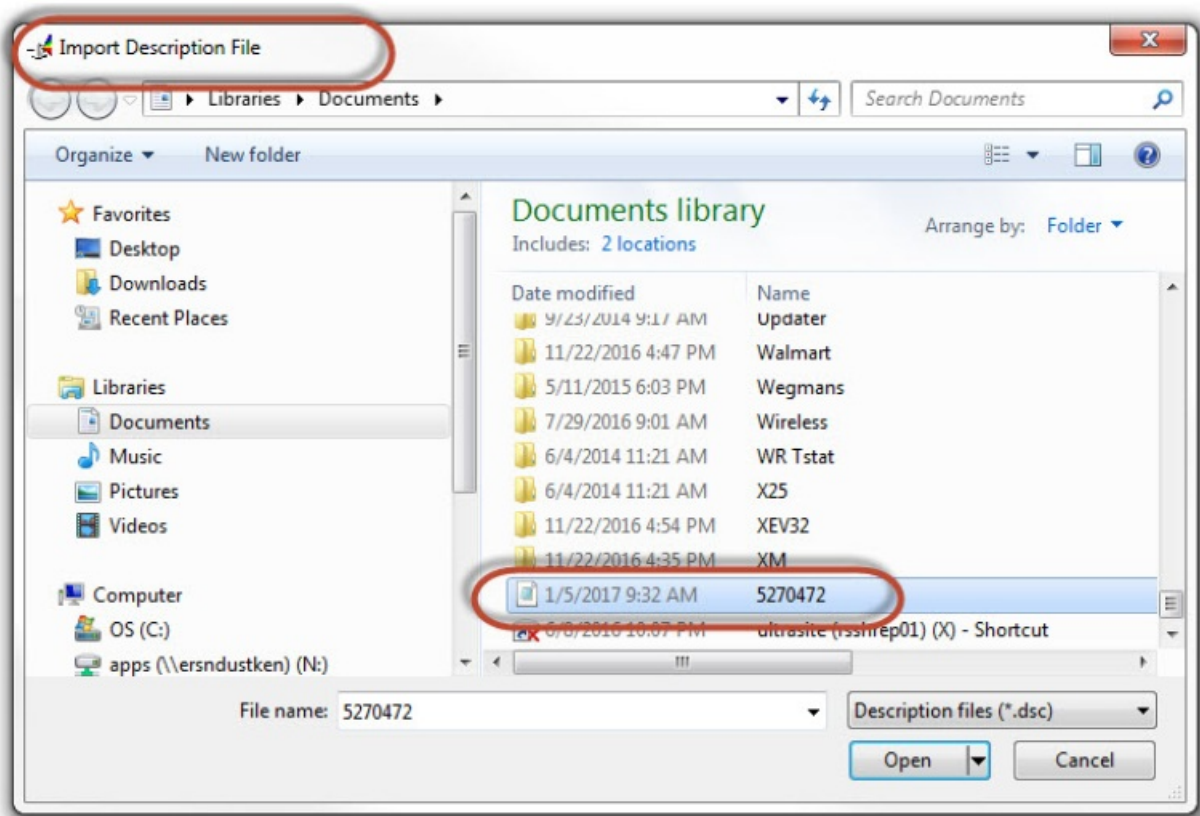


3. Select Browse to go to location where the description (.dsc) file was saved:



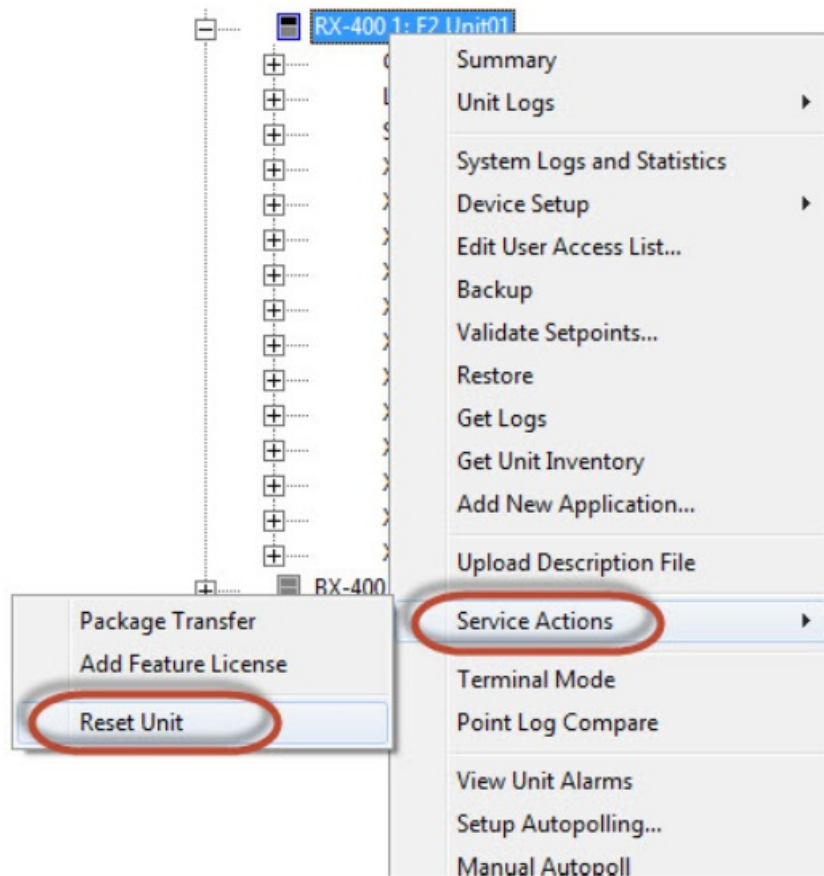
*Figure 2 - Locate .dsc File*

4. Select the desired description (.dsc) file and click Open:



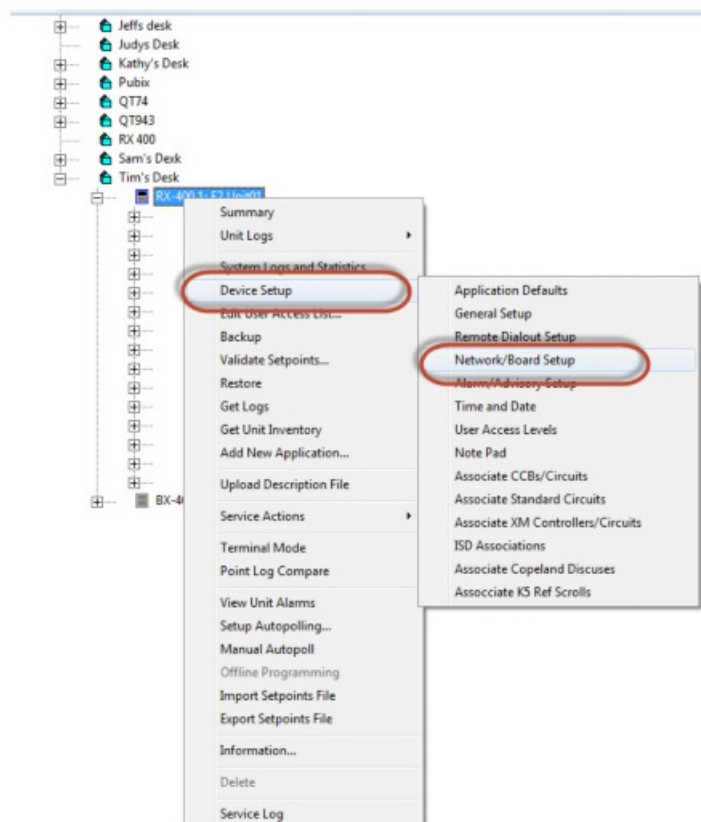
*Figure 3 - Select .dsc File and Import*

5. Right-click the controller. Under Service Actions, select Reset Unit to reboot. The controller must be rebooted to see the description (.dsc) file:



*Figure 4 - Reboot the Controller*

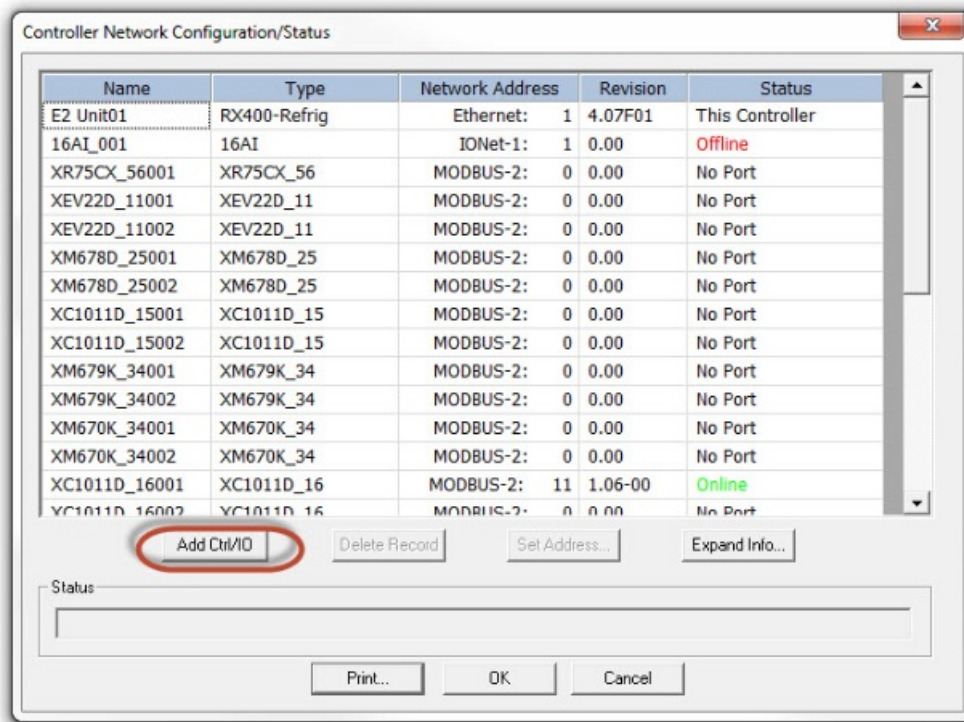
6. After the controller reboots, in the navigation tree, go to Device Setup>Network Board Setup to add the device:



*Figure 5 - Network/Board Setup*

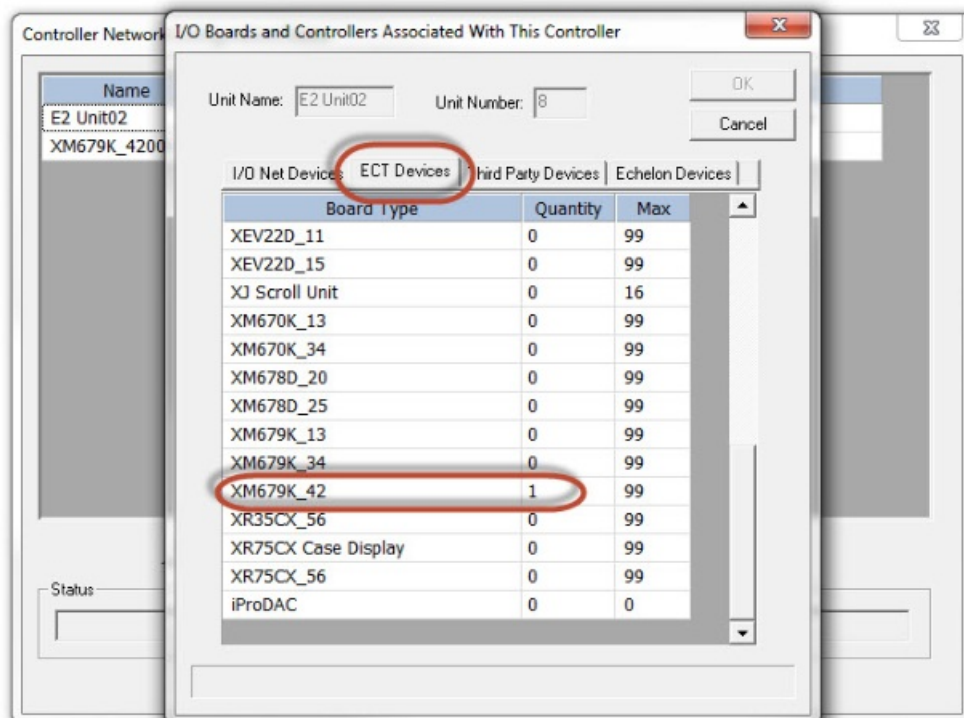
7. Select Add Ctr/IO to add a device:





*Figure 6 - Adding the Device*

8. Select the ECT Devices tab and select the desired device. Enter the number of devices and set up the Com port address and commission the devices as usual:



*Figure 7 - ECT Tab - Add Number of Devices*

## License Key Installation

When licensed products are purchased from Emerson, the customer provides Emerson with (1) the types of features to be purchased, (2) the quantity of features to be purchased, and (3) the unique MAC address of each controller in which the features will be enabled. Emerson then returns the customer a report that contains a set of 16-character license keys and if necessary one or more description files that must be loaded into the E2 to allow the selected devices to communicate with the E2.



## Installation Steps

License keys must be entered from the front panel of the E2, or by using UltraSite32 or Connect+ in Terminal Mode.

1. Press **log in/out** and enter your username and password. You must be level 4 or above to enter a license key.
2. After logging in, press **Alt+T** and check that the MAC Address field on the TCP/IP screen (Figure 1) matches the MAC address in the report given to you from Emerson. The license key will not work unless the MAC address matches exactly. If the MAC address matches, go to step 3.

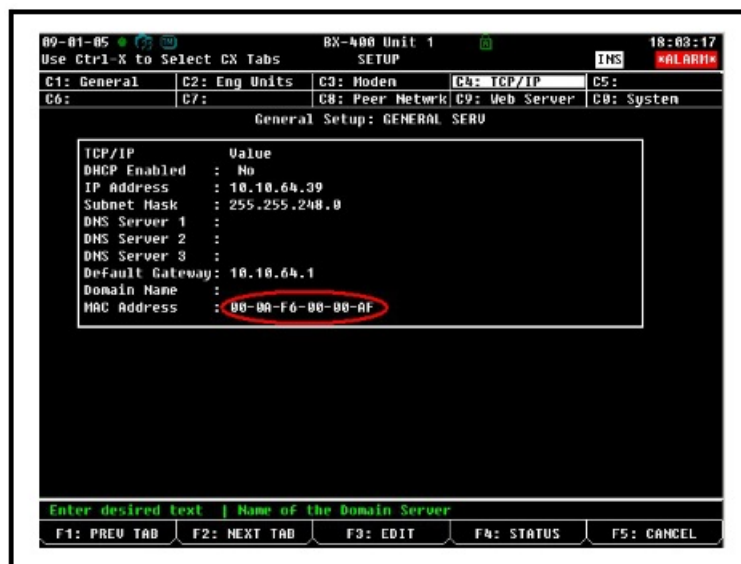


Figure 1 - MAC Address Screen

3. Press **Menu**, **7**, **9** to access the License Manager Screen (Figure 2).
4. Press **F1** to access the Activate Feature box.
5. Enter the 16-character license key in the blanks provided.
6. If entered correctly, the message at the bottom of the Add Feature box should read Feature Activated. Press **Exit** to exit and save.

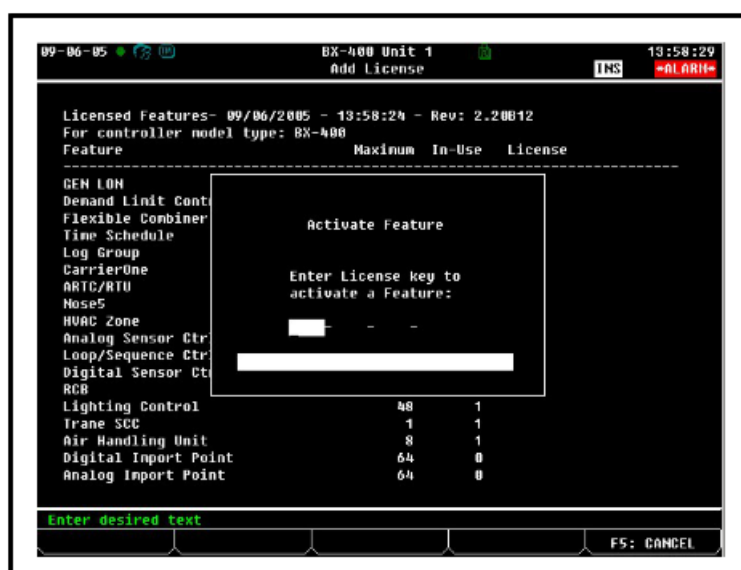





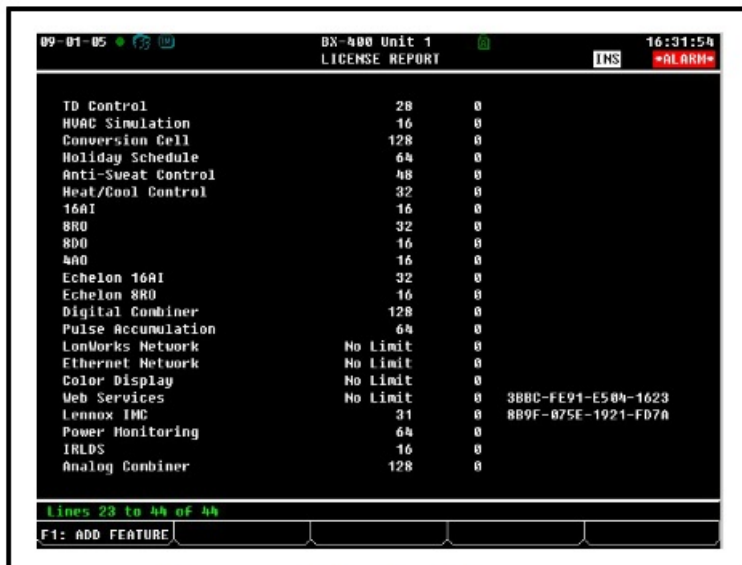
Figure 2 - Add License Screen

If the key is incorrect, the message will read "Feature Unknown or Invalid Key" — double-check that the key was entered correctly and the MAC address matches the one specified in the report. Repeat steps 1 through 6 for each license key to be entered for this E2.

## Rebooting to Complete License Key Activation

When all license keys have been entered for the E2, you must reboot the E2 unit to complete the license key activation process. Press the RESET button on the E2 processor board.

When the E2 is finished rebooting, login again and press , ,  and verify the features are listed as enabled. They will be shown in this screen along with the license key(s) you entered to enable them (Figure 3).



TD Control	28	0
HVAC Simulation	16	0
Conversion Cell	128	0
Holiday Schedule	64	0
Anti-Sweat Control	48	0
Heat/Cool Control	32	0
16A1	16	0
8R0	32	0
8D0	16	0
8A0	16	0
Echelon 16A1	32	0
Echelon 8R0	16	0
Digital Combiner	128	0
Pulse Accumulation	64	0
LonWorks Network	No Limit	0
Ethernet Network	No Limit	0
Color Display	No Limit	0
Web Services	No Limit	0
Lennox IMC	31	0
Power Monitoring	64	0
IRLDS	16	0
Analog Combiner	128	0

Lines 23 to 44 of 44

F1: ADD FEATURE

Figure 3 - Viewing Licenses

## Document Part # 026-4186 Rev 1

This document may be photocopied for personal use.

Visit our website at <http://www.climate.emerson.com> for the latest technical documentation and updates.

Join Emerson Technical Support on Facebook. <http://on.fb.me/WUQRnt>

For Technical Support call 833-409-7505 or email ColdChain. [TechnicalServices@Emerson.com](mailto:TechnicalServices@Emerson.com)

The contents of this publication are presented for informational purposes only and they are not to be construed as warranties or guarantees, express or implied, regarding the products or services described herein or their use or applicability. Emerson reserves the right to modify the designs or specifications of such products at any time without notice. Responsibility for proper selection, use and maintenance of any product remains solely with the purchaser and end-user.

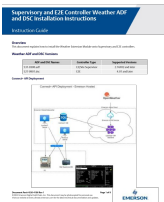
©2022 Emerson is a trademark of Emerson Electric Co.

**EMERSON. CONSIDER IT SOLVED™.**

©2022 Emerson Digital Cold Chain, Inc. This document may be photocopied for personal use.

Visit our website at [www.climate.emerson.com](http://www.climate.emerson.com) for the latest technical documentation and updates.

## Documents / Resources

	<p><b><a href="#">EMERSON Supervisory and E2E Controller Weather ADF and DSC Weather Extension Module</a></b> [pdf] Instruction Manual</p> <p>Supervisory and E2E Controller Weather ADF and DSC Weather Extension Module, Weather Extension Module</p>
---	---

## References

-  [Emerson Retail Solutions Tech Support | Facebook](#)

- [!\[\]\(7e19807c61da14f515588e95cd49886c\_img.jpg\) Climate Technologies Worldwide | Emerson US](#)
- [!\[\]\(8ff9e60a4b0560d7ec99179ef4779d9e\_img.jpg\) HVACR Technology and Infrastructure Solutions | Emerson US](#)

Manuals+.