



# EMERSON Site Supervisor Controller User Guide

[Home](#) » [Emerson](#) » EMERSON Site Supervisor Controller User Guide 

## Contents

- [1 EMERSON Site Supervisor Controller](#)
- [2 Ethernet Connection](#)
- [3 Direct Connect Instructions](#)
- [4 Logging Into the Site Supervisor](#)
- [5 How to Change the IP Address](#)
- [6 Setup Wizard](#)
- [7 Basic Navigation](#)
- [8 Housing Dimensions and Mounting](#)
- [9 Technical Specifications](#)
- [10 Wiring Diagram](#)
- [11 Site Supervisor RS485 Wiring Guide Examples](#)
- [12 Documents / Resources](#)
  - [12.1 References](#)
- [13 Related Posts](#)



**EMERSON Site Supervisor Controller**



The Site Supervisor is a system that combines energy management with the ability to monitor various facility systems and provide alerts when there are issues that need attention. This system provides HVAC control, Refrigeration System Monitoring and Control, as well as Lighting Control. In addition, the Site Supervisor can monitor and report energy consumption and take action to reduce the energy demand during peak periods. This can have a direct impact on utility bills by reducing total energy costs. The Site Supervisor ensures that the HVAC and lighting systems are on and off at the appropriate times. This ability to monitor store conditions can potentially minimize energy consumption.

**For a copy of the latest Supervisory Control user manual (P/N 026-1803), visit the Site Supervisor page on the Emerson website:**

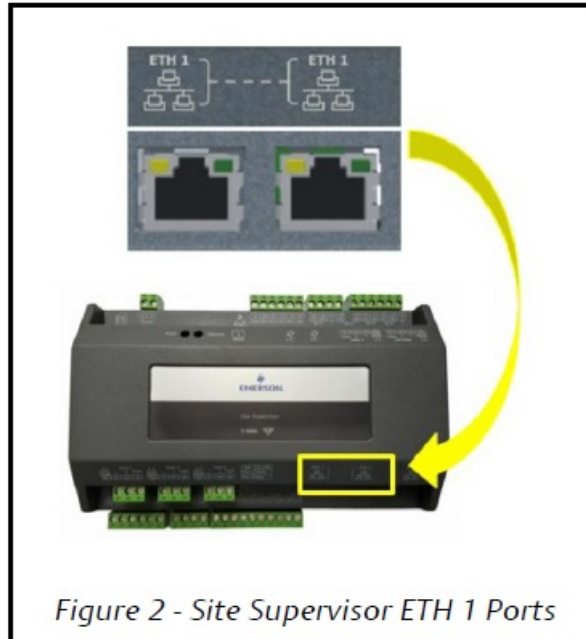
**<https://climate.emerson.com/en-us/products/controls-monitoring-systems/facility-controls-electronics/facility-and-system-controls/lumity-supervisory-controls-platform>** to download or contact Emerson Electronics and Solutions Technical Support at 833-409-7505.



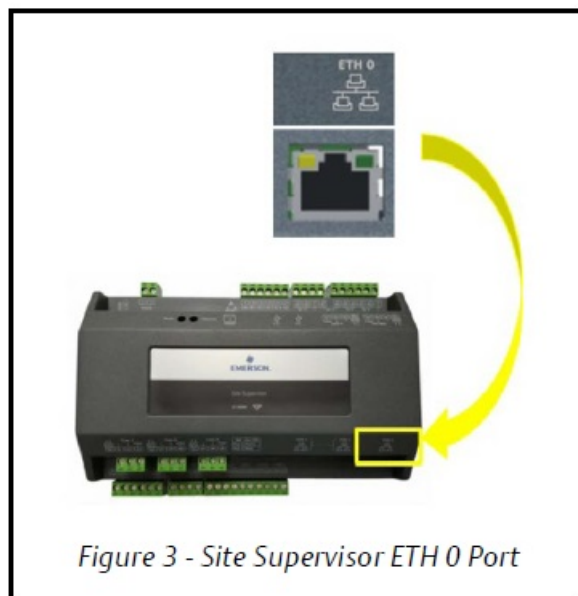
## Ethernet Connection

1. ETH1 is designed to be used for directly connecting to a laptop, PC, or optional touchscreen with a CAT5 network cable.
2. The default IP for ETH1 is 192.168.1.250.
3. The optional Site Supervisor Display touchscreen default IP is 192.168.1.200 and will connect automatically to the Site Supervisor when plugged into ETH1.

It is recommended that you do not change these defaults.



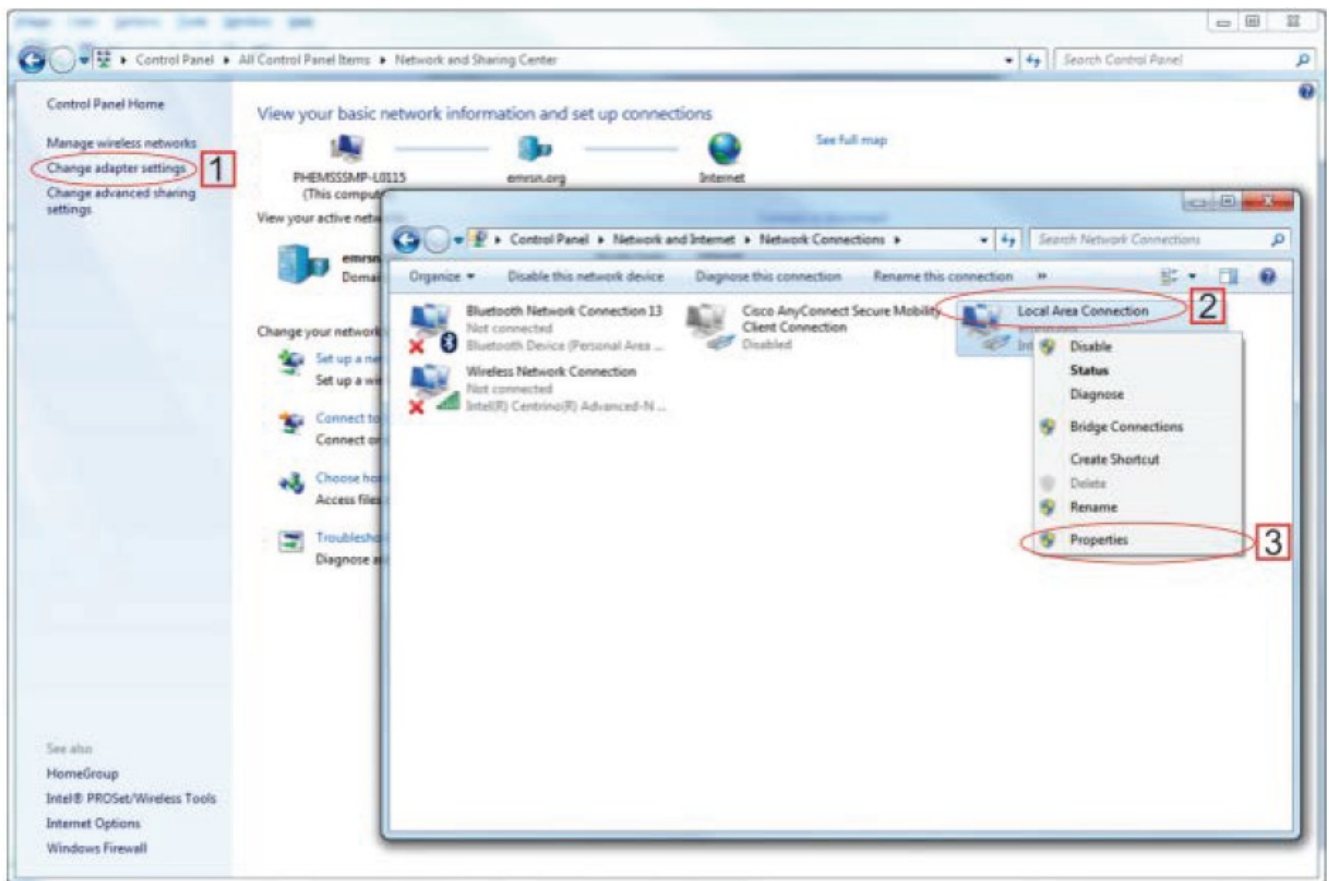
4. ETH0 should be reserved for secure network connections: store or corporate networks. Ask your network administrator for the correct network IP address for ETH0.
5. ETH0 and ETH1 are physically separated for added security. Directly connecting to ETH1 will not access the secure network connection on ETH0.



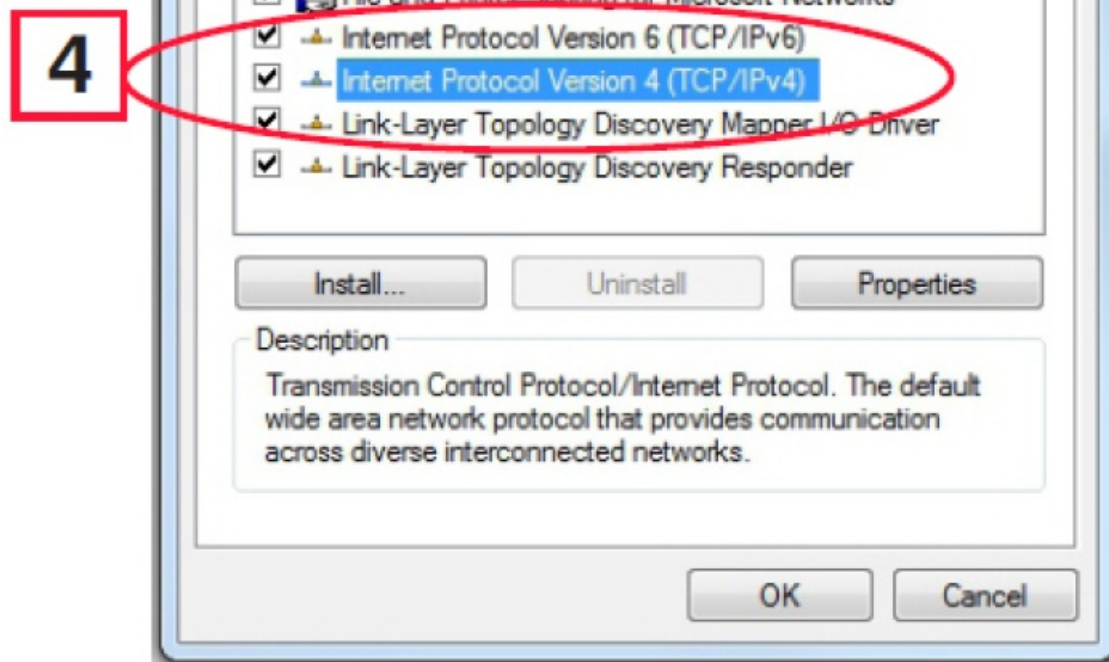
## Direct Connect Instructions

### Connect your laptop to Site Supervisor's Ethernet port ETH1:

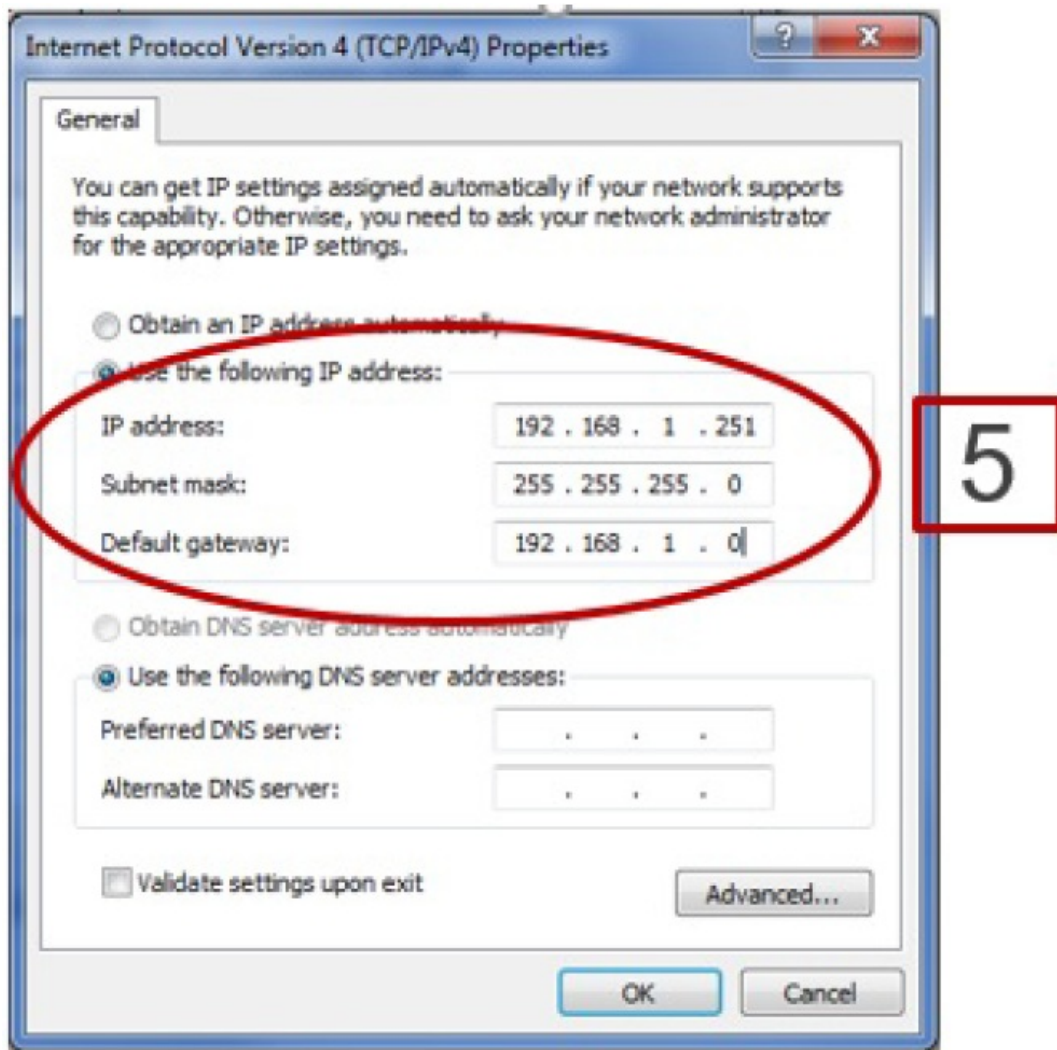
1. Under the Control Panel – Network and Sharing Center, select Change adapter settings.
2. Select the Local Area Connection port being used.
3. Select Properties.



4. Highlight the section Internet Protocol Version 4 (TCP/IPv4) and click Properties:



5. Click Use the following IP address: and enter the IP address 192.168.1.251 and the Subnet mask 255.255.255.0 of the PC being used on the Local Area Network or direct connection and click OK:

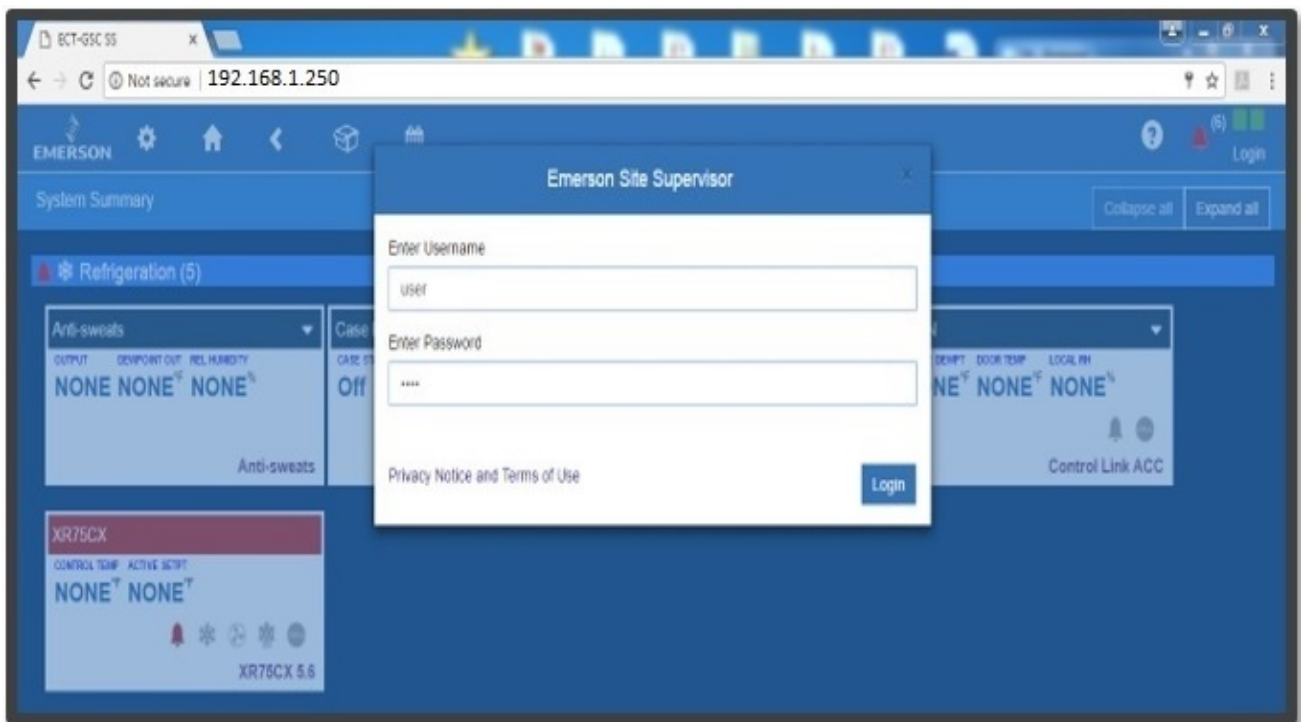


## Logging Into the Site Supervisor

1. Launch a preferred Web browser: Microsoft Edge v88 and later, Mozilla Firefox 11 and later, Google Chrome 61.0 and later, Apple Safari® on iOS10 (iPhone® 5C, iPad® 4) and later, Webview on Android 5.0 (Samsung Galaxy S4) and later are the supported browsers.
2. Enter the IP Address of the device.
3. Enter your Username/Password (default user/pass) and click Login. Then update your password to the minimum complexity requirements and click Save.

Note that when directly connecting your laptop or PC to ETH1, enter the default IP into the browser address bar: ETH1 Default IP Address is 192.168.1.250.





**The password supplied does not meet the minimum complexity requirements.**

**Please select another password that meets all of the following criteria :**

- Passwords must contain 8 to 24 characters.
- Passwords shall not be composed of all the same character (e.g., "aaaaaaa" or "(((((((((")).
- Passwords cannot contain a commonly-used phrase.

New Password

Confirm Password

Save

Refresh

## How to Change the IP Address

### Method 1: Direct Connect

1. Select the Main Menu icon Configure System > General System Properties > Network Settings:

EMERSON

Network Settings

Advanced Save

INTERNET (TCP/IP)

Domain Name

ETH 0 DHCP Enabled **DISABLE**

ETH 0 IP Address 10.161.223.27

ETH 0 Subnet Mask 255.255.255.0

ETH 0 Default Gateway 10.161.223.1

ETH 0 MAC Address 00:0A:F6:81:E9:B3

DNS Server 1 8.8.8.8

DNS Server 2 8.8.4.4

ETH 1 IP Address 192.168.1.250

Copyright © 2018 Emerson

Site Supervisor GSC  
user 02/20/2018 03:55:59 PM

2. On the INTERNET (TCP/IP) section on the screen, enter the IP Address in the ETH 0 IP Address field.

## Method 2: USB Port

1. Create a network.txt with your desired settings (Figure 7):

```

network.txt - Notepad
File Edit Format View Help
ETH0_IP=10.212.238.147
ETH0_MASK=255.255.240.0
ETH0_GW=10.212.224.1
w=yes
  
```

2. Save to the root folder of a thumb drive. Insert the thumb drive into the USB port of the Site Supervisor.
3. Power cycle the Site Supervisor and the new IP Address will be saved.

## Setup Wizard

Note that if setpoints have been pre-loaded in the unit, the Setup Wizard will not auto-start after logging in. If your unit has been received directly from the Emerson factory, the Setup Wizard will open and take you through the following setup screens:

### Localization Screen



◀

Setup Wizard

Localization

Type

System

Date: Format

☒ M-D-YR

☐ D-M-YR

Time: Format

☒ 12-hr

☐ 24-hr

Select Engineering Units

Temperature

☒ °F

☐ °C

Light

☒ fc

☐ lux

Enthalpy

☒ btu/Lb

☐ kJ/kg

Elec Current

☐ mA

☒ A

Energy

☐ Wh

☒ kWh

Power

☐ W

☒ kW

Weight

☒ lbs

☐ kg

Language

English (United States)

Delimiters

fwd-slashes

Delimiters

colons

Air Pressure

PSI

Gas Volume

Ccf

Gas Rate

Ccfh

Air Velocity

feet/min

Liquid Volume

Gal(US)

Liquid Rate

Gal(US)/Min

Temp Rate Change

°F/hr

Set the Site Supervisor's localization data such as language, date and time formats, and engineering units from the Localization screen.

**Language:**

The default for the language selection is American English (United States). The system stores a setting for the preferred system language (internal language code). The default language is used when no user is currently logged into the Site Supervisor or when the currently active preferred language does not have a translation for a given label, prompt, or display text.

## Date:

The Date format can be set to either Day, Month, and full Year (D-M-YR) or Month-Day and full Year (M-D-YR) format. The day, month, and year values are separated by either a forward slash or a dash line depending on user selection. The Date Format can be changed based on user preference and saved to user profiles. On initial Site Supervisor startup, the Date format defaults to the format of the language selected. For example, en-US will default to D-M-YR and all others will default to M-D-YR.

## Time:

The Time format can be set to either a 12-hour (12-hr) format or 24-hour (24-hr) format. The hour, minute, and second values are separated by either a colon or a period depending on user selection. The Time format can be changed based on user preference and saved to user profiles. On initial Site Supervisor startup, the Time format defaults to the format of the language selected. Date and Time delimiters default to forward slashes and colons.

### Engineering Units:

The default engineering units are based on the assigned units for the chosen preferred language. Users can choose or change their preferred set of engineering units and save them to their user profiles. The default engineering units are based on the International System of Units (SI System) format.

Set the system language type in the Language drop-down menu. Click the right arrow > to save and proceed to the System Values screen.

## System Values Screen

From the System Values screen, name the unit by entering it in the Site Name field. The Confirmation window will slide open. Click OK. Then click the right arrow > to proceed to the Network Settings Screen.

- Setup Wizard

System Values

GENERAL SETUP PARAMETERS

Debug Log

DISABLE

Site Name

Site Phone

Controller ID

NTP Enabled

DISABLE

System Time

09/29/2015 05:30:17 PM

Time Zone

(GMT +00:00) Coordinated Universal Time - UTC (UTC)

WEB SERVER SETUP

Web Port

80

Secure Web Port

443

E-mail address

SiteSupervisor@emerson.com

SMS address

UI SETUP

Home Screen

Site Summary

Floor Plan Home Screen

selection such as reports, device information, configuration settings, and more.

- **Menus and Submenus** – these can be viewed on the Main Menu Panel. The Menus and Sub-menus are grouped into different categories. Each menu selection can have several sub-menus. When you click on the lowest sub-menu level, the screen of the chosen selection is displayed.

**Note:**

When some screen information and contents are clicked, more or related information can be displayed or additional screens accessed. For more information about icon descriptions and buttons, refer to the latest Site Supervisor full manual P/N 026-1803.

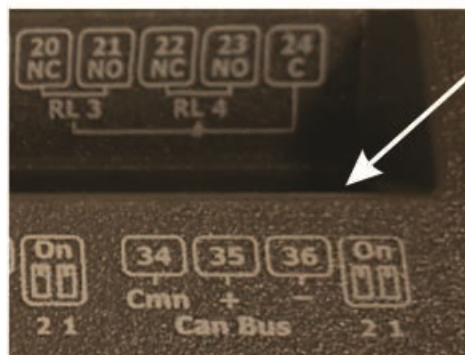
**LEDs**



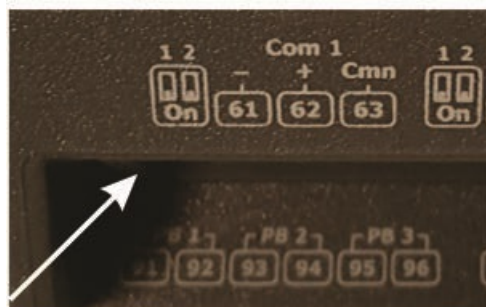
STATE§	DESCRIPTION§
Solid red§	Starting up§
Flashing red - 1 Hz§	Loading OS/Application§
Solid green§	Running - Normal Status§
Flashing red - 2 Hz §	Failure to load§

**Termination Jumper Settings**

**TOP switches**



**SW      On/Off**  
**Pos 1 = Term**  
**Pos 2 = Bias**

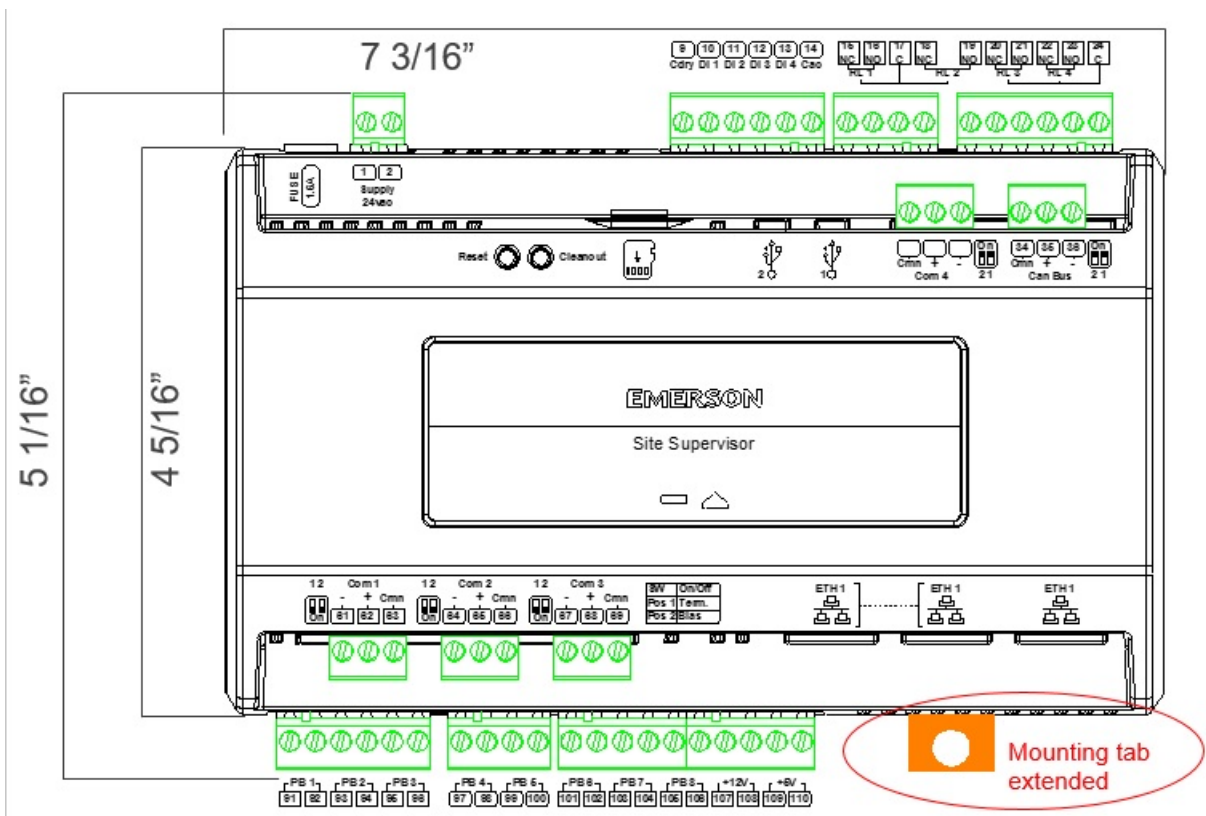


**BOTTOM switches**

**UL Ratings**

Type	Ratings	Terminal
Relay 1 (N.O. & N.C.)	5A, 125/240 VAC, General Purpose, 100K cycles; 4FLA/4LRA, 250VAC, Motor Load, 100K cycles;	J5-2, J5-3, J5-4 (Base Board)
Relay 2 (N.O. & N.C.)	5A, 125/240 VAC, General Purpose, 100K cycles; 4FLA/4LRA, 250VAC, Motor Load, 100K cycles;	J5-1, J5-2, J6-6 (Base Board)
Relay 3 (N.O. & N.C.)	5A, 125/240 VAC, General Purpose, 100K cycles; 4FLA/4LRA, 250VAC, Motor Load, 100K cycles;	J6-1, J6-4, J6-5 (Base Board)
Relay 4 (N.O. & N.C.)	5A, 125/240 VAC, General Purpose, 100K cycles; 4FLA/4LRA, 250VAC, Motor Load, 100K cycles;	J6-1, J6-2, J6-3 (Base Board)

## Housing Dimensions and Mounting

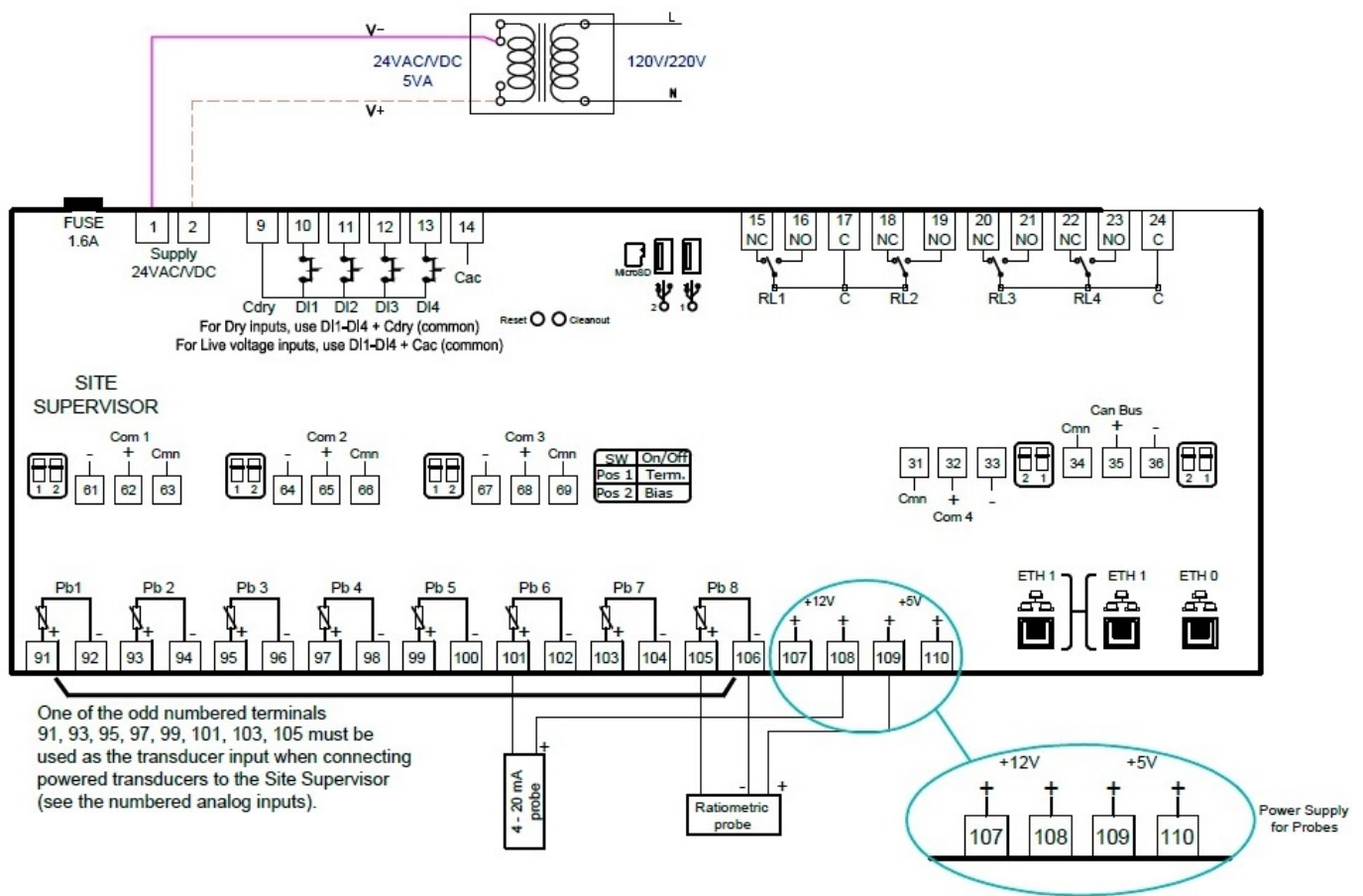


The Site Supervisor can be mounted to a standard 35mm DIN Rail. Snap the orange tabs on the back of the unit to the down position to fasten. If not using the DIN Rail mounting option, fasten to the mounting surface using the openings in the mounting tabs. Pull the four orange mounting tabs out until they lock, which will expose the mounting holes.

## Technical Specifications

<b>Operating Temperature</b>	-40°F to 149°F (-40°C to 65°C)
<b>Relative Humidity</b>	20-85% RH non-condensing
<b>Enclosure Rating</b>	UL 94 V-0
<b>Dimensions</b>	L 7 3/16 x W 2 3/8" x H 4 5/16" (183 mm x 60 mm x 100mm)
<b>24 VAC</b>	20VA required 24VAC/20VA
<b>1 Can Bus</b>	Expansion Module Connections
<b>4 RS485 ports</b>	MODBUS Com Ports 1, 2, 3, and 4
<b>3 Ethernet ports</b>	Ports 1, 1, 0
<b>2 USB ports</b>	1, 2
<b>MicroSD</b>	1
<b>Analog Inputs</b>	8
<b>Digital Inputs</b>	4
<b>Relay Outputs</b>	4

## Wiring Diagram



## Site Supervisor RS485 Wiring Guide Examples

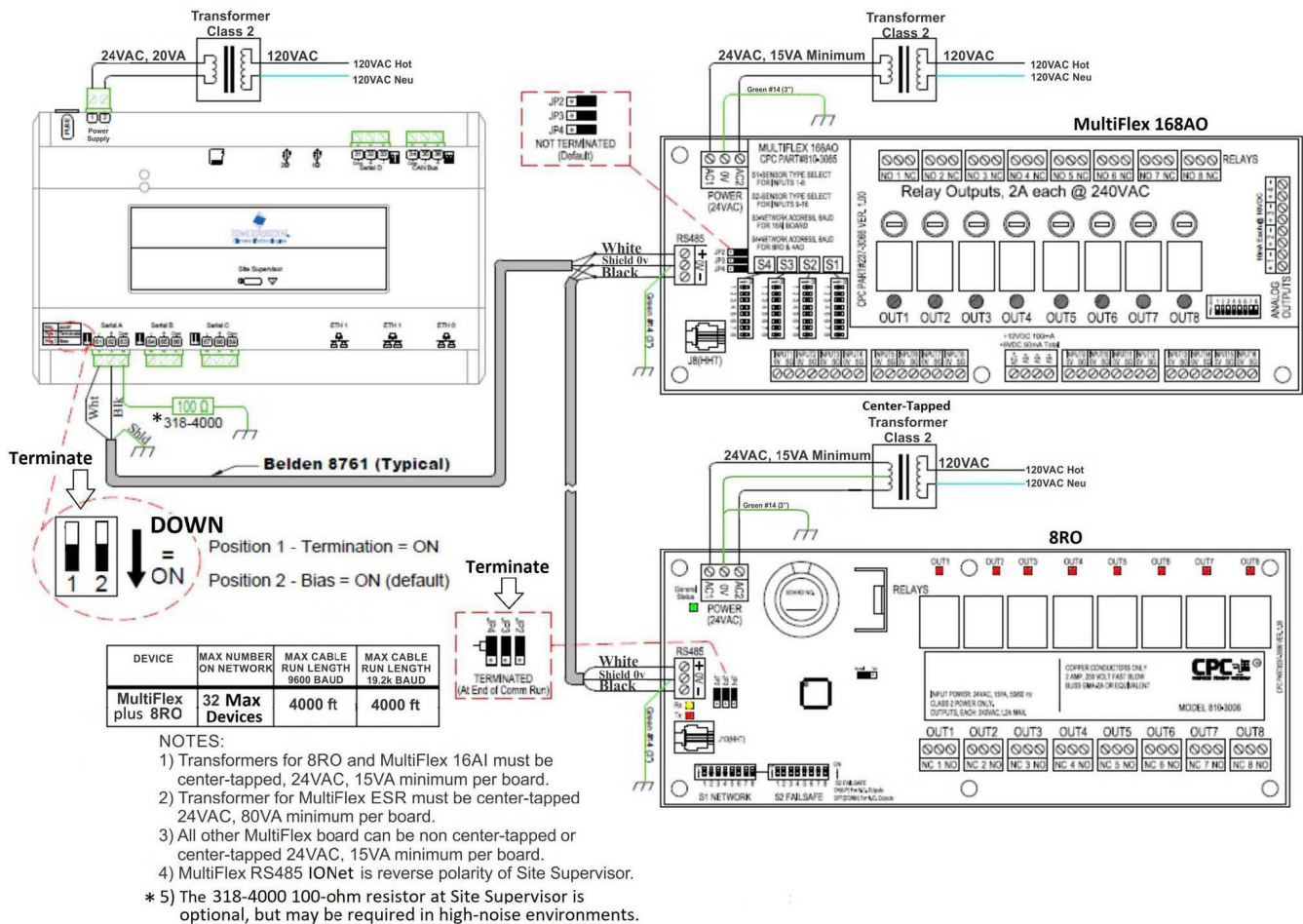
For more wiring information, refer to the latest Supervisor Control user manual (P/N 026-1803).

- The Site Supervisor's IONet connections must be wired in reverse polarity.
- For the Site Supervisor Serial IONet connections, connect the white wire to the negative terminal and the black wire to the positive terminal.
- For 8RO and MultiFlex RS485 IONet connections, connect the white wire to the positive terminal and the black wire to the negative terminal.
- Connect the shield wire to the earth/chassis at the Site Supervisor's end of the IONet network segment. DO NOT connect the shield wire to any connector on the Site Supervisor.
- For daisy-chain configurations, terminate devices at the beginning and the end of the network segment. All other devices in the network segment are not terminated (termination jumpers in the not-terminated position).

## Site Supervisor and MultiFlex



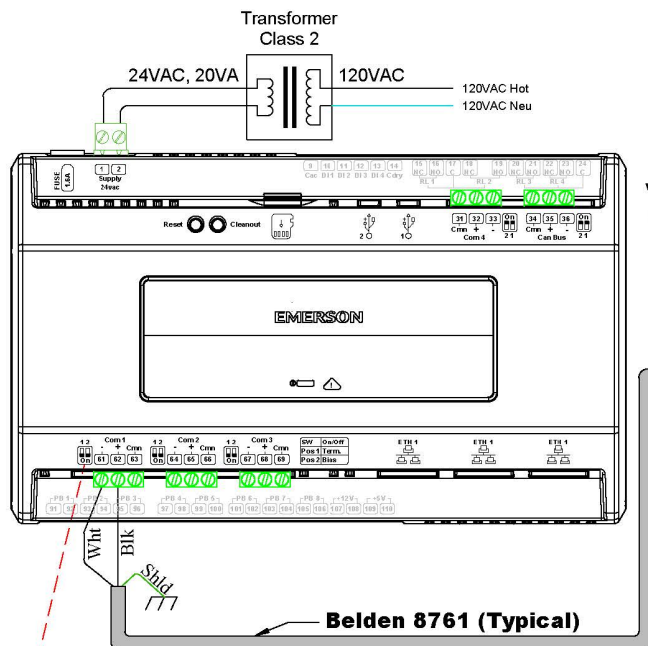
## Site Supervisor and MultiFlex



- The Site Supervisor and XR75CX share the same MODBUS network polarity. Do not reverse polarity.
- Connect the shield wire to the earth/chassis at the Site Supervisor end of the MODBUS network segment. Do not connect the shield wire to any connector on the Site Supervisor or XR75CX.
- For daisy-chain configurations, terminate devices at the beginning and the end of the network segment. Set the dip switch position 1 and 2 to the ON position on the Site Supervisor. For the XR75CX end of the network, terminate with a 150-ohm resistor or 535-2711 termination block. All other devices in the network segment are not terminated.

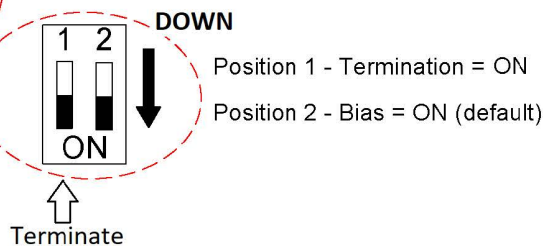
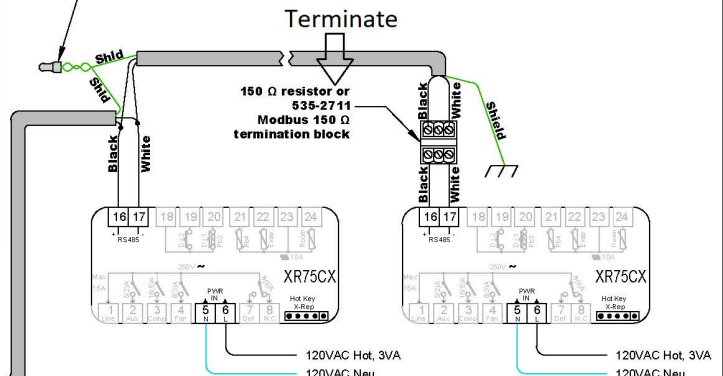
## Site Supervisor and XR75 (120V models)

## Site Supervisor and XR75 (120V models)



DEVICE	MAX NUMBER ON NETWORK	MAX CABLE RUN LENGTH 9600 BAUD	MAX CABLE RUN LENGTH 19.2k BAUD
XR75 (120V)	50	2500'	1250'

Twist shield wires together with insulated wire crimp and use electrical tape or heatshrink to insulate shield joint connection.



### NOTES:

- 1) Ground shields at ends of MODBUS segment.
- 2) Terminate MODBUS Network at the beginning and end of the network segment.
- 3) Set Bias switch position to ON at Site Supervisor.
- 4) Consult factory for configurations with mixed models.
- 5) Maximum 50 XR75CX devices, electrical loading only. Software limitations may apply.




### Document Part # 026-4144 Rev 18

This document may be photocopied for personal use. Visit our website at [www.climate.emerson.com](http://www.climate.emerson.com) for the latest technical documentation and updates. Join Emerson Technical Support on Facebook.

<http://on.fb.me/WUQRnt>. For Technical Support call 833-409-7505 or email ColdChain.

[TechnicalServices@Emerson.com](mailto:TechnicalServices@Emerson.com). The contents of this publication are presented for informational purposes only and they are not to be construed as warranties or guarantees, express or implied, regarding the products or services described herein or their use or applicability. Emerson reserves the right to modify the designs or specifications of such products at any time without notice. Responsibility for the proper selection, use, and maintenance of any product remains solely with the purchaser and end-user. ©2022 Emerson is a trademark of Emerson Electric Co.

### Documents / Resources

	<p><b><a href="#">EMERSON Site Supervisor Controller</a></b> [pdf] User Guide Site Supervisor Controller, Site Controller, Supervisor Controller, Controller</p>
--	--

References

- [Facebook | Emerson Retail Solutions Tech Support](#)
- [Climate Technologies Worldwide | Emerson US](#)
- [Climate Technologies Worldwide | Emerson US](#)
- [Lumity Supervisory Control Platform | Emerson US](#)