



Elton MASCHINE MK3/MIKRO MK3 Ableton Live 11 MIDI Remote Script Instruction Manual

[Home](#) » [Elton](#) » Elton MASCHINE MK3/MIKRO MK3 Ableton Live 11 MIDI Remote Script Instruction Manual 

Contents

- [1 Elton MASCHINE MK3/MIKRO MK3 Ableton Live 11 MIDI Remote Script](#)
- [2 MASCHINE MK3/MIKRO MK3 Ableton Live 11 MIDI Remote Script by Elton47](#)
- [3 Installation](#)
- [4 Documents / Resources](#)
 - [4.1 References](#)
- [5 Related Posts](#)

ELTON™

Elton MASCHINE MK3/MIKRO MK3 Ableton Live 11 MIDI Remote Script



MASCHINE MK3/MIKRO MK3 Ableton Live 11 MIDI Remote Script by Elton47

[Forum thread link](#)

[Old Forum thread link](#)

Installation

1. Make sure you have the latest driver for your MASCHINE MK3/MIKRO MK3 (that gets installed when installing MASCHINE Software)
2. Make sure to have Native Instruments Controller Editor installed (which is installed automatically when MASCHINE software is installed)
3. Plug in your MASCHINE MK3/MIKRO MK3 device
4. Open Controller Editor as Administrator , right click on the icon on Windows and click “Run as Administrator” . It is required to run as administrator in order to save the selected template (explained later in this guide), so you do not have to open and reselect the custom template each time you start your computer 4. Select your device in Controller Editor (MASCHINE MK3/MIKRO MK3) as shown in Image 1 (MASCHINE MIKRO MK3 for example):

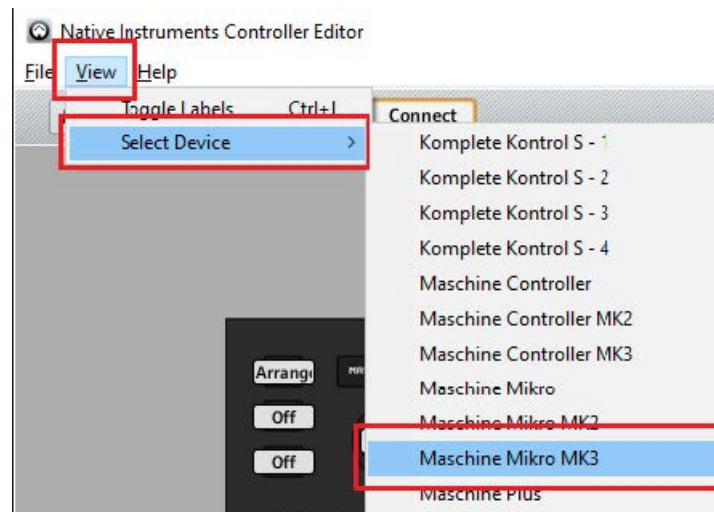


Image 1

5. In the “Templates” panel to the right side, as shown in Image 2 , select Edit and click on Open , then navigate to where you extracted the zip provided from the script product and select Maschine Mk3 Ableton Unofficial.ncm3 (MASCHINE MK3) or Maschine Mikro Mk3 Ableton Unofficial.ncmm3 (MASCHINE MIKRO MK3) file and click Open , as shown in Image 3

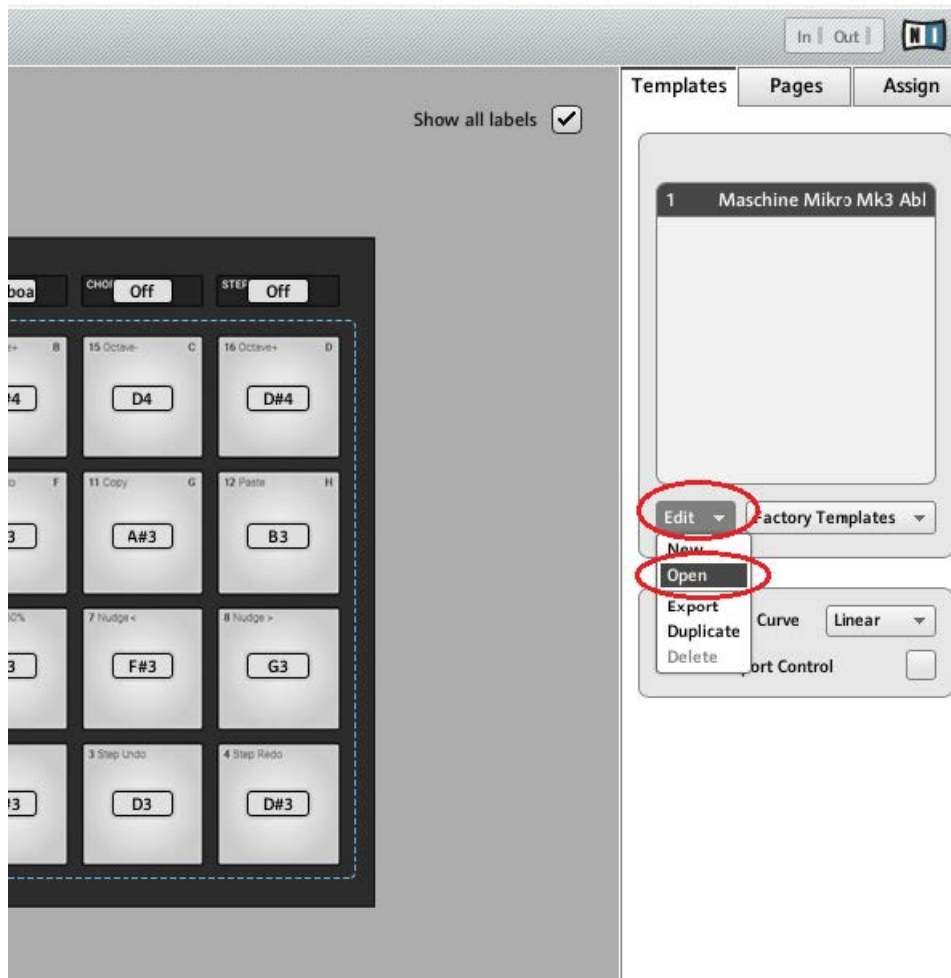


Image 2

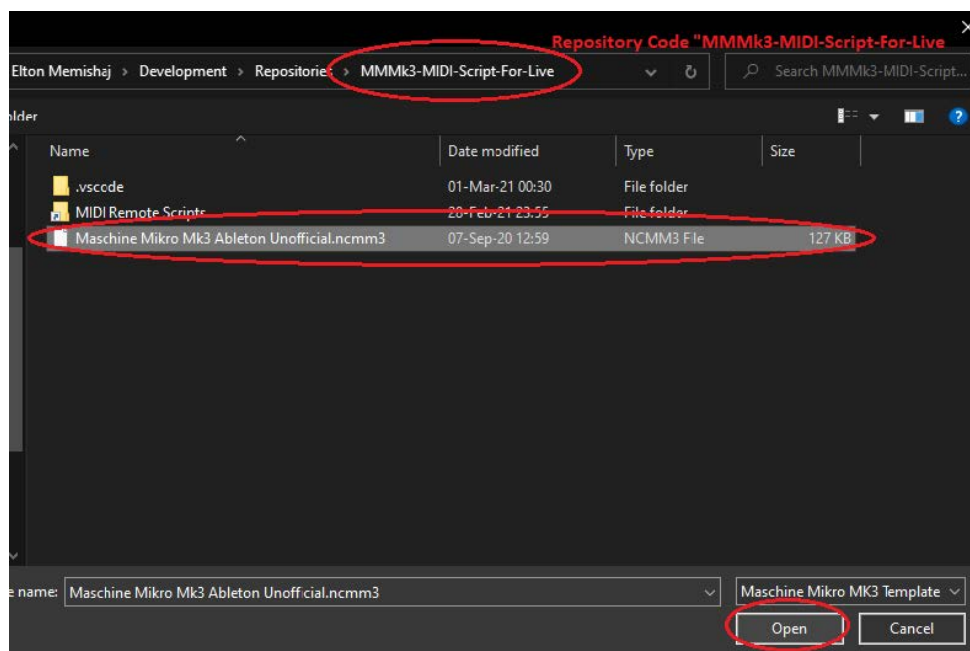


Image 3

6. Close Controller Editor (make sure your MASCHINE MK3/MIKRO MK3 was plugged in during the above steps you followed)
7. Copy Mikro_Mk3_Unofficial_v151 folder provided in the zip file you downloaded
8. Navigate to <YOUR_ABLETON_LIVE_USER_LIBRARY_FOLDER>\Remote Scripts\ , where YOUR_ABLETON_LIVE_USER_LIBRARY_FOLDER is usually found at C:\Users\<YOUR_USERNAME>\Documents\Ableton\User Library (unless you changed it on Live's Preferences). Important: If no "Remote Scripts" folder exists under "User Library" , you have to create an empty folder with

the name “Remote Scripts” inside “User Library”

9. Paste the folder copied from step 7, into the directory you just navigated as shown in step 8
10. Open Ableton Live and go to Preferences
11. In the MIDI tab under Preferences, choose the Mikro_Mk3_Unofficial_v151 Control Surface, and the respective MIDI IN/OUT ports as shown in the Image 4

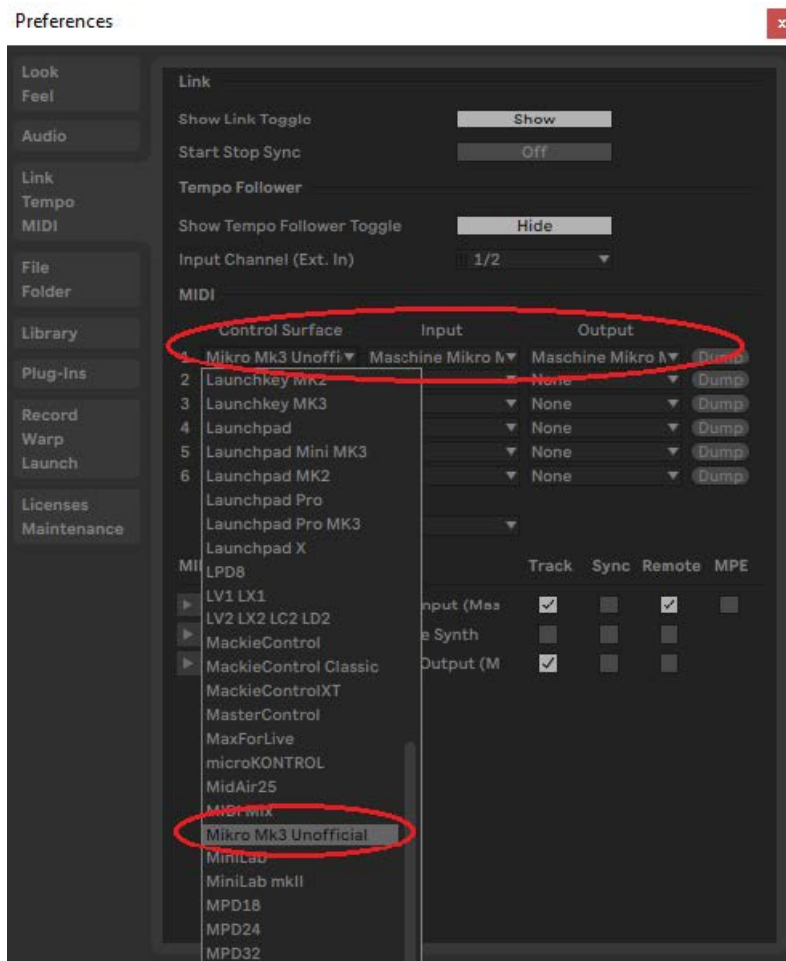


Image 4

12. Make sure to tick the checkboxes of Track for both MIDI IN and OUT of this script, and also Remote checkbox for MIDI IN only, as shown in Image 5



Image 5

13. Hold SHIFT button on the hardware and press on “Maschine” icon button to activate “MIDI Mode”
For using the script in Live 11, please refer to the interactive user manual in this link here or the PDF format provided in the zip file of this product, for both MASCHINE MK3 and MASCHINE MIKRO MK3 variants
For any issues, write me at eltoni.memishi@live.com

Documents / Resources

	<p>Elton MASCHINE MK3/MIKRO MK3 Ableton Live 11 MIDI Remote Script [pdf] Instruction Manual</p> <p>MASCHINE MK3 MIKRO MK3 Ableton Live 11 MIDI Remote Script, MASCHINE MK3, MASCHINE MIKRO MK3, Ableton Live 11 MIDI Remote Script, Ableton Live, 11 MIDI Remote Script, 11 Remote Script, 11 MIDI Script</p>
--	--

References

- [\[v1.6.0\] MASCHINE PLUS/MK3/MIKRO MK3 Ableton Live 11 MIDI Remote Script — Native Instruments Community](#)
- [\[v1.6.0\]\[User Manual\] MASCHINE PLUS/MK3/MIKRO MK3 Ableton Live 11 MIDI Remote Script by Elton47](#)
- [\[v1.5.0\] MASCHINE MK3/MIKRO MK3 Ableton Live 11 MIDI Remote Script \(Unofficial\) | NI Community Forum](#)