



Contents [[hide](#)]

[1 elock K2 Smart Access Controller](#)

[2 SPECIFICATION](#)

[3 Illustration](#)

[4 FCC WARNING](#)

[5 Documents / Resources](#)

[5.1 References](#)



elock K2 Smart Access Controller



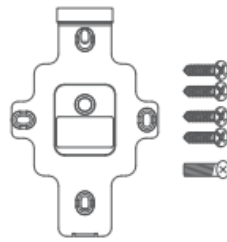
SPECIFICATION

- **Model:** K2/K2F
- **Dimensions:** W79mm x H125mm x T15.5mm
- **Material:** Aluminum frame/Tempered glass panel
- **Communication:** Bluetooth 4.1
- **Supporting systems:** Android 4.3/IOS7.0 above
- **Stand-by current:**~15mA
- **Operating current:**~1A
- **Power supply:** DC 12V
- **Unlocking time:** ~1.5S
- **Waterproof level :**IP66(K2 only)
- **Card capacity:** 20,000
- **Fingerprint capacity*:** 100(K2F only)

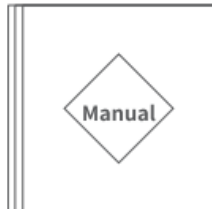
Accessories



Access
controller x 1



Mounting plate x 1
Screw:4+1

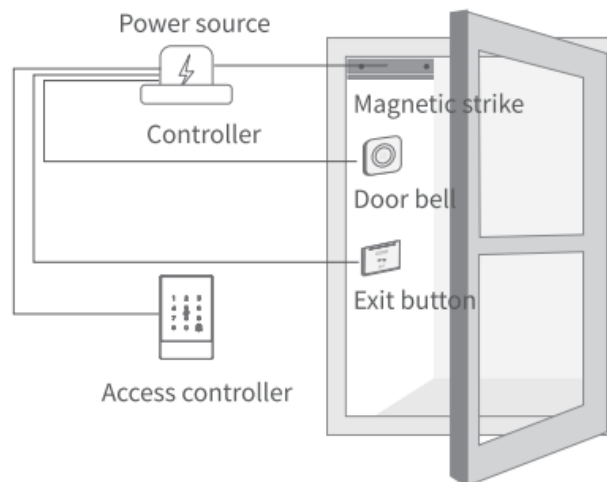


Manual x 1

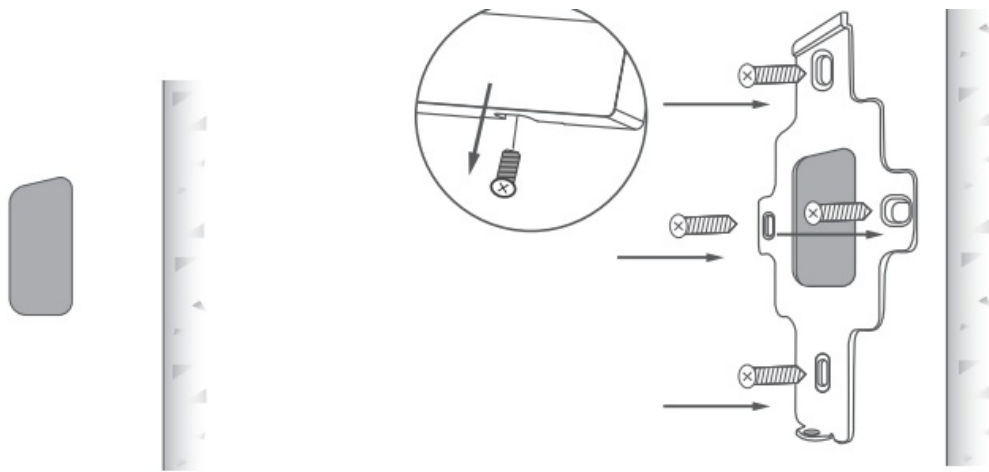


Hex screwdriver x 1

Illustration

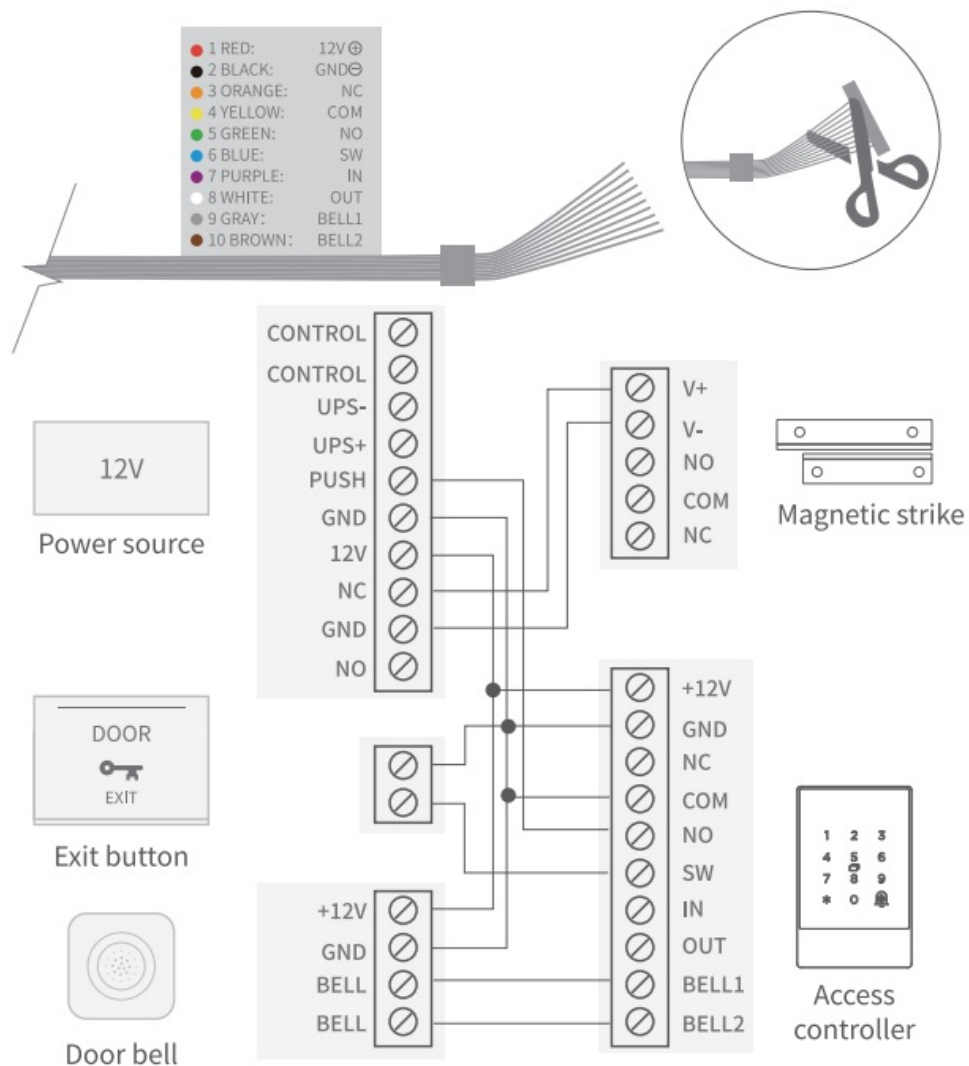


1. Drill a hole for the cable. Drill a hole at the appropriate position to make space for the cable to connect to the power source.
2. Install the mounting plate. Remove the mounting plate from the access controller, and fix it on the wall with 4 screws.
- 3.

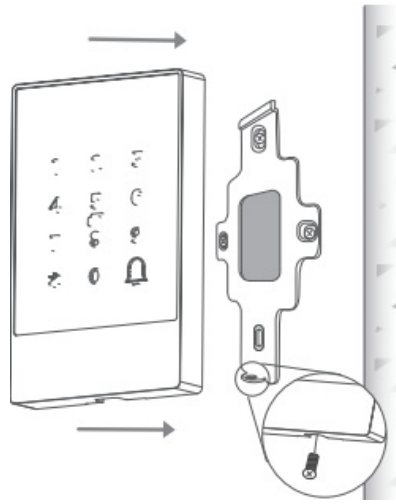


Wiring: Cut off the connector of the cable, strip, and connect the leads to the appropriate ports of the power supply according to the illustration.

4.

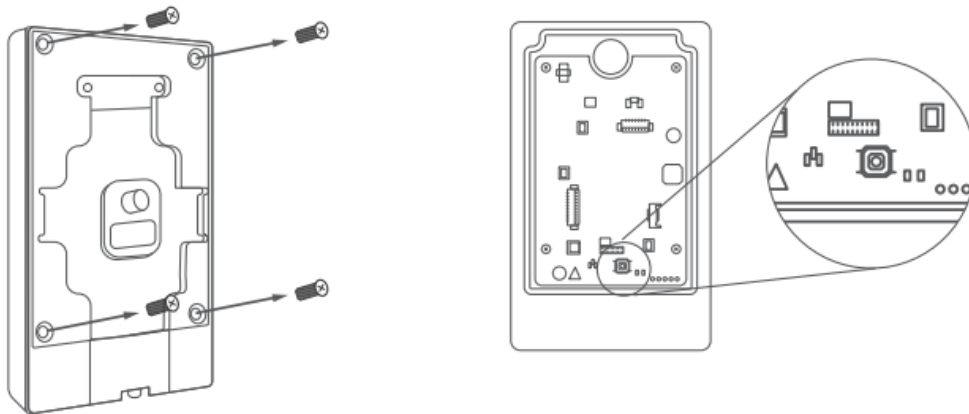


Install the access controller: Fit the access controller into the hook and fix it on the mounting plate with a screw in the bottom.



Reset to default mode

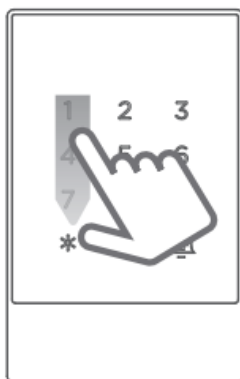
1. Open the rear cover of the access control
2. Find the reset button on the motherboard



3. After the access control is powered on: long-press the reset button to hear “Beep” to complete the reset

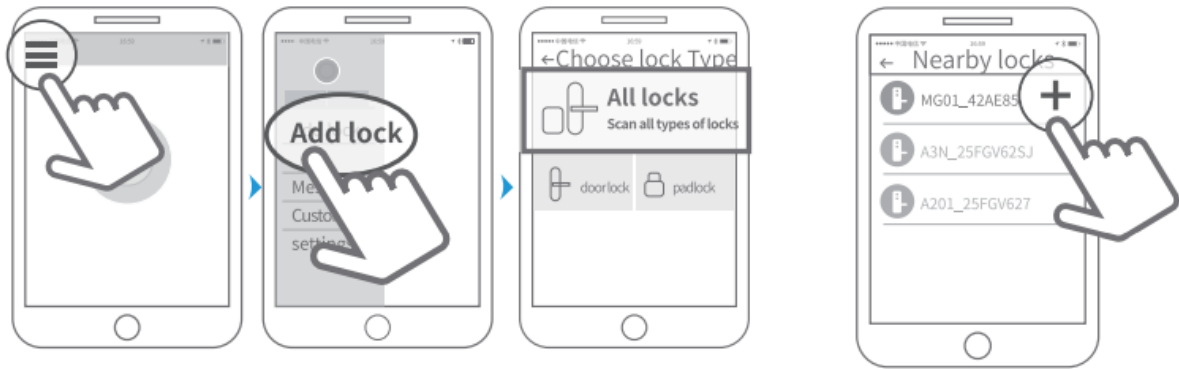
Pair the access controller with the app

1. Tap the panel to light it up and activate the lock.
2. Activate the app.



3. Tap the “E” icon on the upper left corner, tap “+Add Lock”, select “Door Lock”.

4. Tap the device shown on the screen. Wait a few seconds, and then add successfully.



- **Notice:** If it fails, please shut off the APP and Bluetooth, turn them on and try the above process again.

Limited Warranty

1. For any defect in material and/or workmanship, the original purchaser of the product can:
 1. Return or ask for a replacement within 7 days from the date of the Invoice.
 2. Ask for a replacement within 15 days from the date of the Invoice.
 3. Can ask for a free repair within 365 days from the date of the Invoice.
2. This warranty does not cover defects caused by modification, alteration, misuse or physical abuse of the product.

FCC WARNING

This device complies with part 15 of the FCC Rules. Operation is subject to the following two conditions:

1. This device may not cause harmful interference, and
2. this device must accept any interference received. including interference that may cause undesired operation.

Any changes or modifications not expressly approved by the party responsible for compliance could void the user's authority to operate the equipment.

- **NOTE:** This equipment has been tested and found to comply with the limits for a Class B digital device, pursuant to Part 15 of the FCC Rules. These limits are designed to

provide reasonable protection against harmful interference in a residential installation. This equipment generates, uses and can radiate radio frequency energy and, if not installed and used in accordance with the instructions, may cause harmful interference to radio communications.

However, there is no guarantee that interference will not occur in a particular installation. If this equipment does cause harmful interference to radio or television reception. which can be determined by turning the equipment off and on, the user is encouraged to try to correct the interference by one Of more Of the following measures:


- Reorient or relocate the receiving antenna,
- Increase the separation between the equipment and receiver.
- Connect the equipment into an outlet on a circuit different from that to which the receiver is connected.
- Consult the dealer or an experienced radio/ TV technician for help.

To maintain compliance with the FCC’s RF Exposure guidelines. This equipment should be installed and operated with a minimum distance of 20cm the radiator your body: use only the supplied antenna.

Disclaimer

WE continue to improve products as technologies and features arp For this reason, we reserve the right to make alteætians to the products without prior notice.

Documents / Resources

	elock K2 Smart Access Controller [pdf] Instruction Manual K2 Smart Access Controller, K2, Smart Access Controller, Access Control ler
---	---

References

- [User Manual](#)

Leave a comment

Your email address will not be published. Required fields are marked *

Comment *

Name

Email

Website

☐ Save my name, email, and website in this browser for the next time I comment.

Post Comment

Search:

e.g. whirlpool wrf535swhz

Search

[Manuals+](#) | [Upload](#) | [Deep Search](#) | [Privacy Policy](#) | [@manuals.plus](#) | [YouTube](#)

This website is an independent publication and is neither affiliated with nor endorsed by any of the trademark owners. The "Bluetooth®" word mark and logos are registered trademarks owned by Bluetooth SIG, Inc. The "Wi-Fi®" word mark and logos are registered trademarks owned by the Wi-Fi Alliance. Any use of these marks on this website does not imply any affiliation with or endorsement.