



## E644767 Elo Edge Connect Status Light User Guide

[Home](#) » [elo](#) » E644767 Elo Edge Connect Status Light User Guide 

### E644767 Elo Edge Connect Status Light User Guide



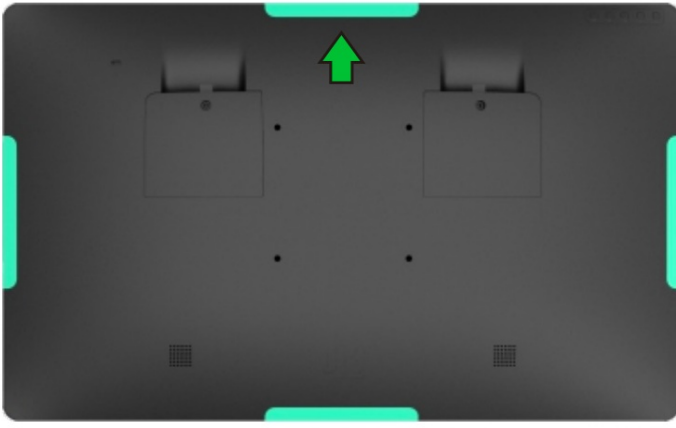
#### Contents

- [1 Installation](#)
- [2 PACKAGE CONTENT](#)
- [3 Documents / Resources](#)
  - [3.1 References](#)
- [4 Related Posts](#)

### Installation

Please go to [www.elotouch.com/support](http://www.elotouch.com/support) to verify you have the latest drivers before installing this device.

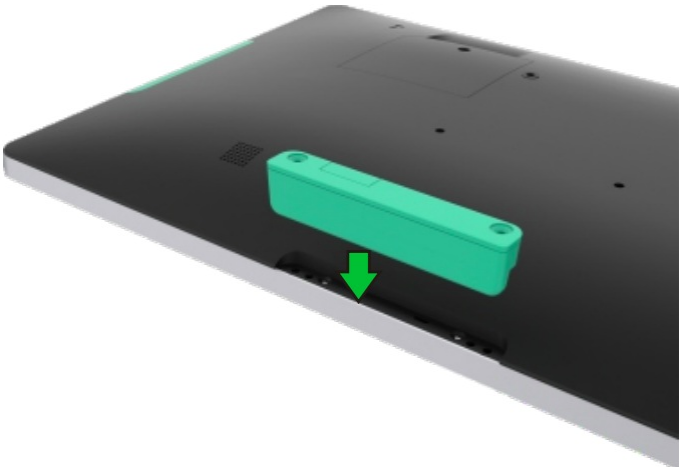
1. Select location to mount the status light kit Elo recommends the left/right location in either portrait or landscape orientation



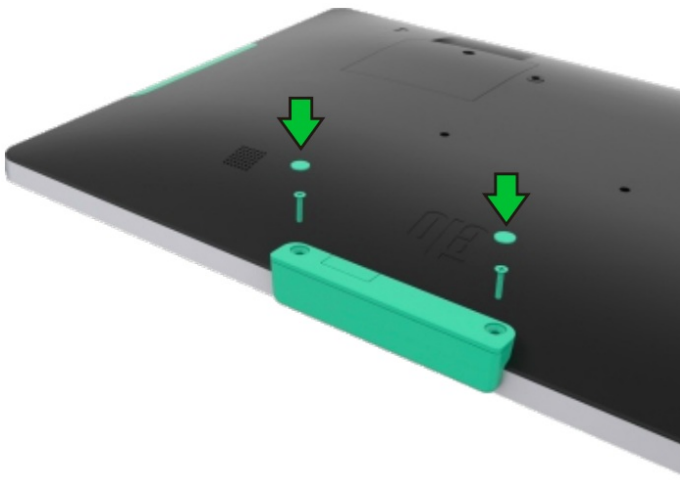
2. Remove the selected peripheral cover from the touch monitor



3. Gently insert the status light kit into the peripheral bay taking care to ensure the connector mates properly



4. Install the 2 flat head screws included with the kit and cover the screws with the adhesive mylar covers if desired



## PACKAGE CONTENT

1x



2x



2x



### Elo Technical Support

Online self-help: [www.elotouch.com/support](http://www.elotouch.com/support)

#### America

800-ELO-TOUCH

Tel +1 408 597 8000

EloSales.[NA@elotouch.com](mailto:NA@elotouch.com)

#### Europe(EMEA)

Tel +32 (0)16 930 136

EMEA.[Sales@elotouch.com](mailto:Sales@elotouch.com)

#### Asia-Pacific

Tel +86 (21) 3329 1385

[EloAsia@elotouch.com](mailto:EloAsia@elotouch.com)

The information in this document is subject to change without notice. Elo Touch Solutions, Inc. and its Affiliates (collectively “Elo”) makes no representations or warranties with respect to the contents herein, and specifically disclaims any implied warranties of merchantability or fitness for a particular purpose. Elo reserves the right to revise this publication and to make changes from time to time in the content hereof without obligation of Elo to notify any person of such revisions or changes.

No part of this publication may be reproduced, transmitted, transcribed, stored in a retrieval system, or translated into any language or computer language, in any form or by any means, including, but not limited to, electronic, magnetic, optical, chemical, manual, or otherwise without prior written permission of Elo Touch Solutions, Inc.


Elo and the Elo logo are either trademarks or registered trademarks of Elo Touch Solutions, Inc.



© 2022 Elo Touch Solutions, Inc. All rights reserved.  
[www.elotouch.com](http://www.elotouch.com)



## Documents / Resources

	<a href="#">elo E644767 Elo Edge Connect Status Light</a> [pdf] User Guide E644767, E758615, E644767 Elo Edge Connect Status Light, E644767, Elo Edge Connect Status Light, Connect Status Light, Status Light, Light
--	--

## References

- [Elo Touchscreens for Retail, Self-Order & POS | Elo® Official Website](#)
- [Elo Elo Customer Service](#)
- [User Manual](#)

[Manuals+](#), [Privacy Policy](#)

This website is an independent publication and is neither affiliated with nor endorsed by any of the trademark owners. The "Bluetooth®" word mark and logos are registered trademarks owned by Bluetooth SIG, Inc. The "Wi-Fi®" word mark and logos are registered trademarks owned by the Wi-Fi Alliance. Any use of these marks on this website does not imply any affiliation with or endorsement.