



elma instruments Elma B-Scope 800 Gearbox User Guide

[Home](#) » [elma INSTRUMENTS](#) » elma instruments Elma B-Scope 800 Gearbox User Guide 

elma instruments Elma B-Scope 800 Gearbox



See the details where needed. Inside the cavity wall, inside the skunk, or in a gearbox. All inspection tasks will be easier to perform with **ELMA B-scope 800**. Most craft groups have tasks where the need to be able to see the hidden or hidden details is present. These tasks are quick to perform and document with this endoscope, which the user easily and efficiently sets up.

Contents

- 1 Safety instructions
- 2 Symbols
- 3 Features
- 4 Description
 - 4.1 Description Layout
 - 4.2 Operation with Elma B-Scope App
 - 4.2.1 Settings
 - 4.2.2 Management of Photos and videos
- 5 Operation
 - 5.1 Turning Elma B-Scope On/Off
 - 5.2 Switch between front and side camera
 - 5.2.1 Camera brightness
 - 5.3 Connecting the endoscope with your SmartPhone
 - 5.4 Taking a Picture
 - 5.5 Taking a video
- 6 Charging the Battery
- 7 Technical Data
- 8 Documents / Resources
- 9 Related Posts

Safety instructions



WARNING:

READ AND UNDERSTAND ALL INSTRUCTION. Failure to follow all instructions listed below, may result in electric shock, fire or serious personal injury.

- Read operator's manual carefully. Learn the applications and limitations, as well as the specific potential hazards, related to this device. Following this rule will reduce the risk of electric shock, fire, or serious injury.
- Do not operate battery devices in explosive atmospheres, such as in the presence of flammable liquids, gases or dust. Battery devices create sparks which may ignite the dust or fumes.
- Do not disassemble the device. Contact with internal parts may increase the risk of electric shock or cause damage to the device.
- Do not use on a ladder or unstable support. Stable footing on a solid surface enables better control of the device in unexpected situations.
- Do not store the device in an area of high heat or humidity. Do not expose the device to extended high heat from the sun (such as on a vehicle dashboard.) To reduce the risk of serious personal injury, do not store outside or in vehicles. Damage to the device or the battery can result.
- Do not expose device to rain or wet conditions. Water entering a device will increase the risk of electric shock.
- Use the device in accordance with these instructions and in the manner intended for the device, taking into account the environmental conditions and the work to be performed.

Use of the device for operations different from those intended could result in a hazardous situation.

- Do not use the inspection scope for diving or any other prolonged underwater use.
- The plastic housing is not waterproof. The camera cable is waterproof to 1.8M.
- This device should not be operated unless the battery compartment is closed.
- Do not place battery devices or their batteries near fire or heat. This will reduce the risk of explosion and possibly injury.
- Do not crush, drop or damage battery. Do not use batteries that have been dropped or received a sharp blow. A damaged battery is subject to explosion. Properly dispose of a dropped or damaged battery immediately.
- Batteries can explode in the presence of a source of ignition, such as a pilot light. To reduce the risk of serious personal injury, never use any battery device in the presence of open flame. An exploded battery can propel debris and chemicals. If exposed, flush with water immediately.
- Under extreme usage or temperature conditions, battery leakage may occur. If liquid comes in contact with your skin, wash immediately with soap and water. If liquid gets into your eyes, flush them with clean water for at least

10 minutes, then seek immediate medical attention. Following this rule will reduce the risk of serious personal injury.

> Save these instructions. Refer to them frequently and use them to instruct others who may use this device. If you loan someone this device, loan them these instructions also.

Symbols

> The following signal words and meanings are intended to explain the levels of risk associated with this product.



DANGER:

Indicates an imminently hazardous situation, which, if not avoided, will result in death or serious injury.



WARNING:

Indicates a potentially hazardous situation, which, if not avoided, could result in death or serious injury.



CAUTION:

Indicates a potentially hazardous situation, which, if not avoided, may result in minor or moderate injury.

Notice: (Without Safety Alert Symbol) Indicates important information not related to an injury hazard, such as a situation that may result in property damage.

> Some of the following symbols may be used on this product. please study them and learn their meaning. Proper interpretation of these symbols will allow you to operate the product better and safer.



Safety alerts: Indicates a potential personal injury hazard.



Read Operator's Manual: To reduce the risk of injury, user must read and understand operator's manual before using this product.

Features

- > Send live video to your phone.
- > Take pictures of the images captured by the scope.
- > File your video and pictures.
- > Share saved data.
- > View dark areas with the 5-stage LED adjustment.
- > * Free **Elma Scope APP** Optimized for: iOS versions ≥ 6.0 and Android versions ≥ 4.0 , When updating the **Elma Scope APP**, remember to save your data, in another location, as the update can delete the saved photos / videos

Description

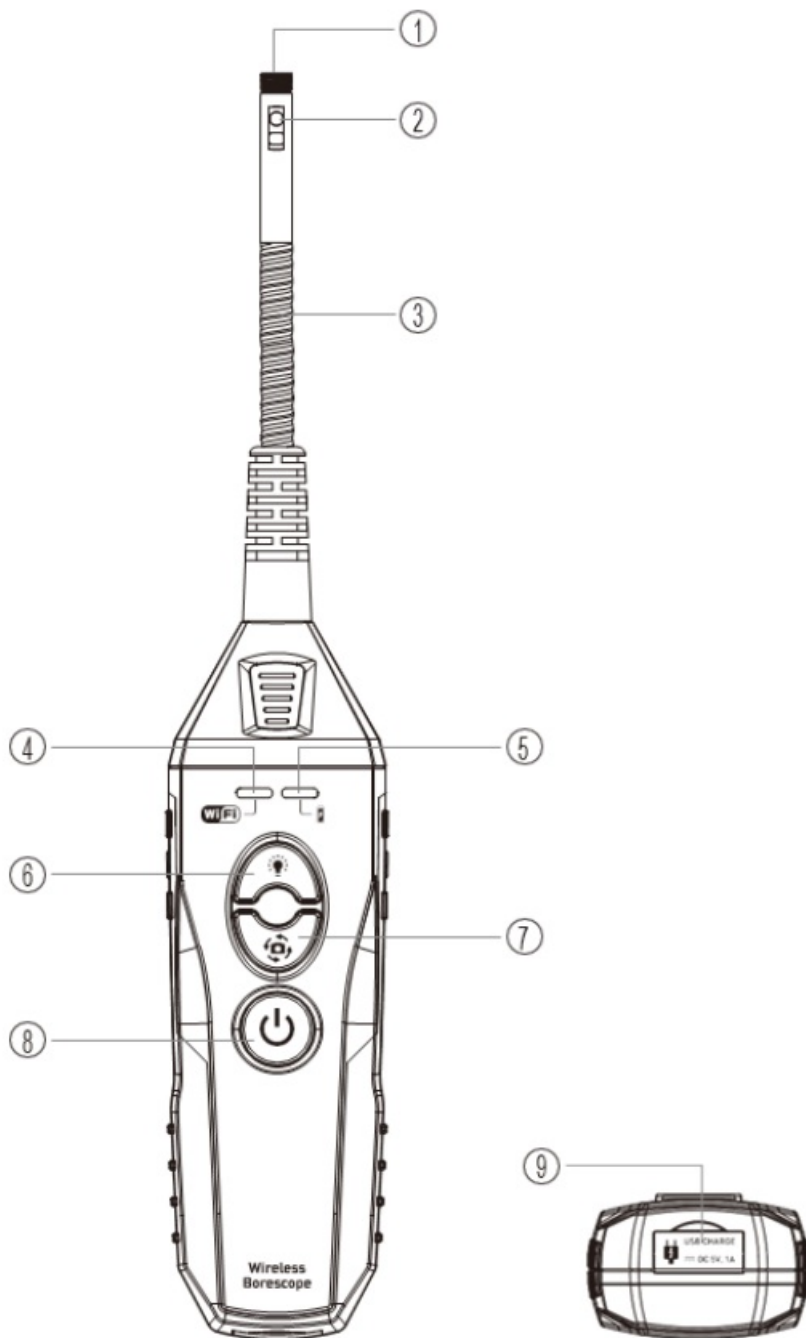


WARNING: Do not use this product if it is not completely assembled or if any parts appear to be missing or damaged. Use of a product that is not properly and completely assembled or with damaged or missing parts could result in serious personal injury.



WARNING: Do not attempt to modify this product or create accessories not recommended for use with this product. Any such alteration or modification is misuse and could result in a hazardous condition leading to possible serious personal injury.

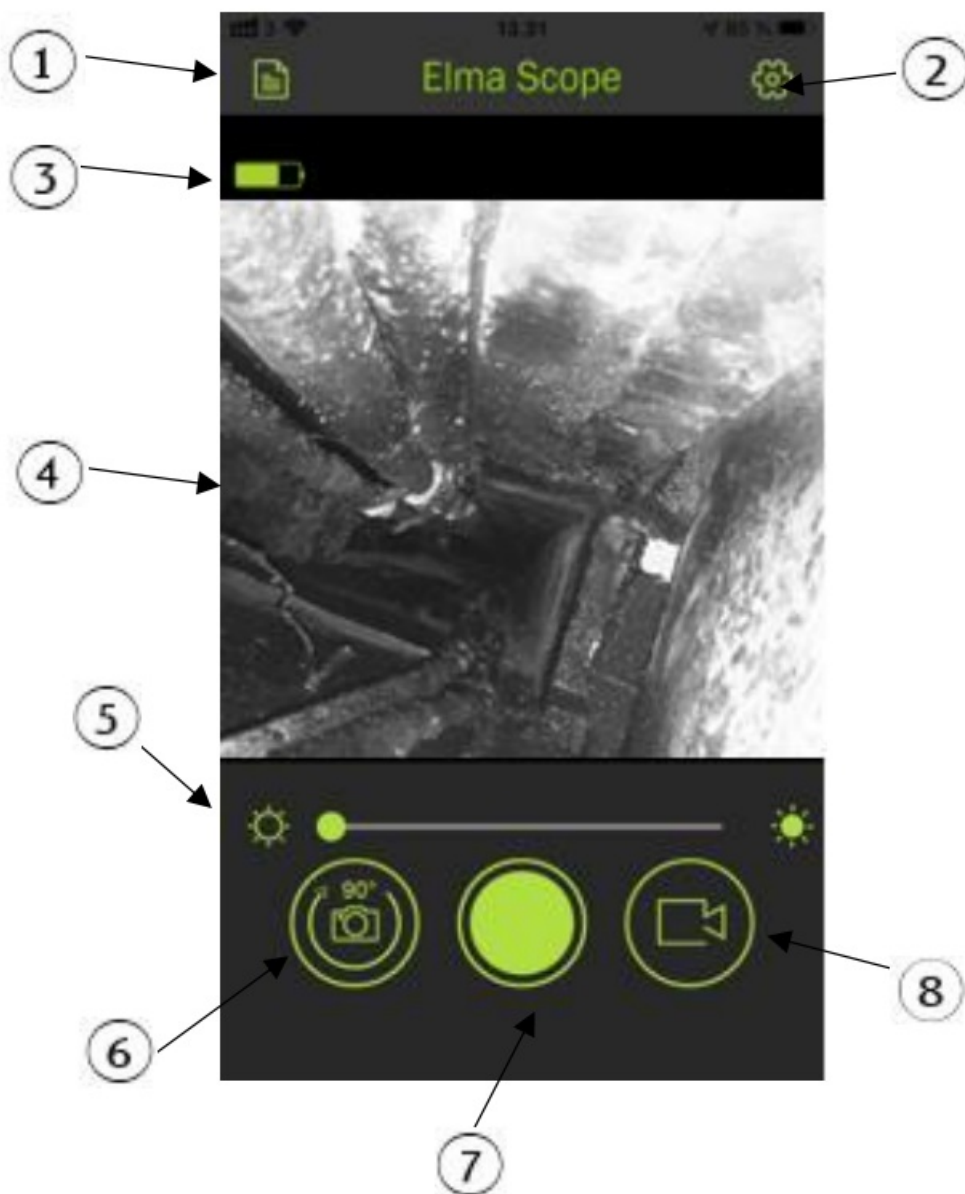
Description Layout



1. Front camera/Led light
2. Side camera
3. Gooseneck
4. Wi-Fi-status indicator
5. Battery indicator
6. Brightness Adjust Button
7. Camera Switch Button
8. Power Button

9. Mini USB Socket

Operation with Elma B-Scope App



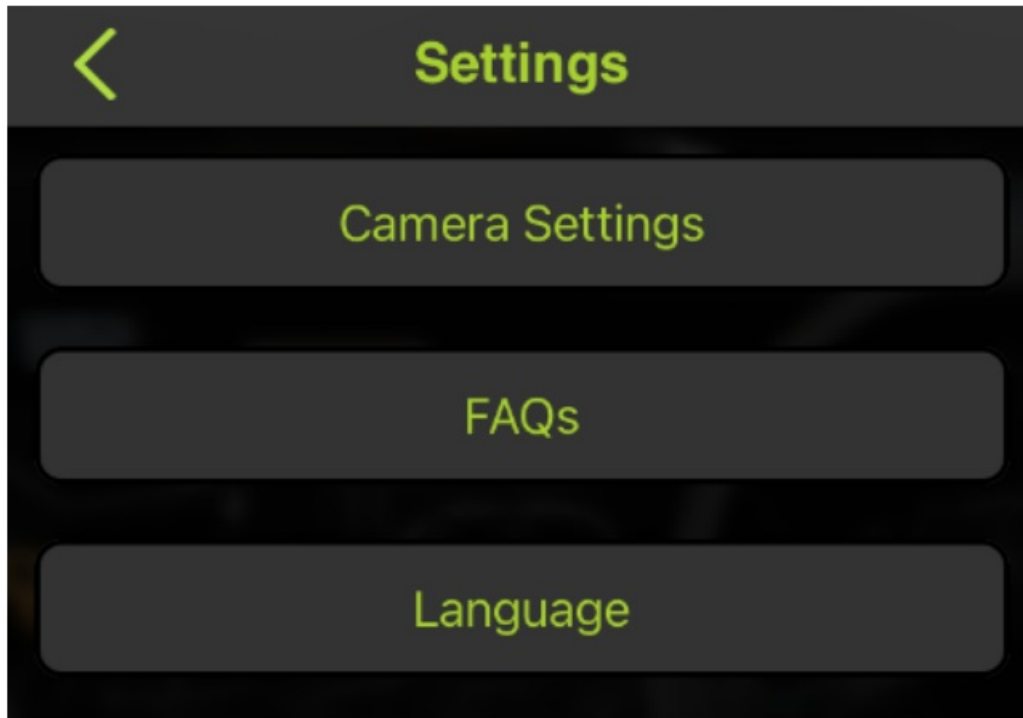
This app is optimized for:

iOS versions ≥ 6.0 and Android versions ≥ 4.0

1. Saved photos / videos
2. Settings
 - a. Camera settings
 - i. Max video length
 - ii. Camera resolution
 - iii. Pictures per. second
 - b. FAQ- Establish Wi-Fi connection
 - c. Language
3. Battery indicator
4. Image from the camera
5. Adjust brightness for lighting in dark environments


6. Camera rotation 900
 - 1800
 - 2700
 - 3600
7. Start video / image recording
8. Switch between picture and video recording, start / stop.

Settings



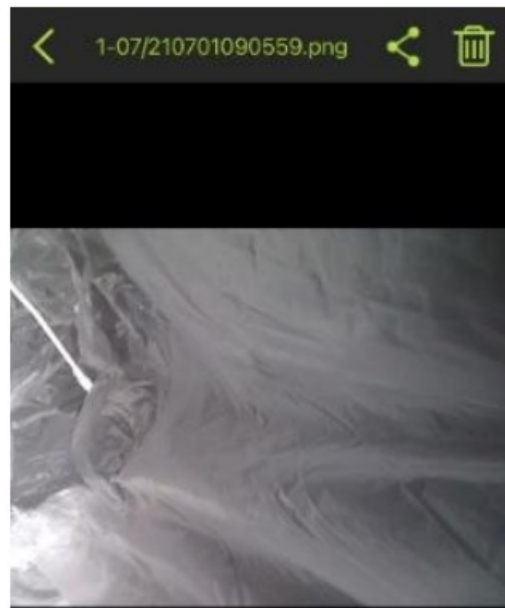
1. Camera settings
 - a. Set Maximum Video Recording Time
 - 15 sec. to 2 min.
 - b. Camera resolution
 - 1280 x 720 or 640 x 480
 - c. Frames pr. Second
 - 20 fps or 25 fps
2. FAQs
3. Language –(Dansk/English/Español/Francais)

Management of Photos and videos

Use  to access Photos and Videos



Photo



Select one or more Photos use

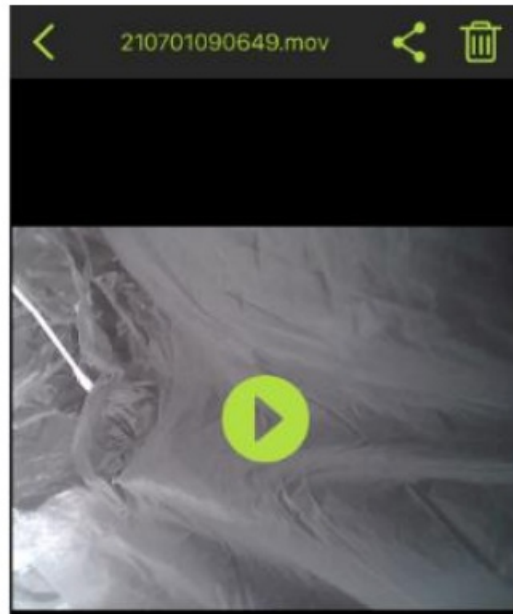


Share Photos use





Videos



Select one or more videos use



Share videos use



or replay a video.

Operation

Turning Elma B-Scope On/Off

1. To turn the device **On**, press the **Power Button [8]**
The light for **Battery Indicator [5]** starts flashing and turn green after app. 0,5 sec.
2. Turn Off the device press the **Power Button [8]** for app. 0,5 sec.

Switch between front and side camera

In some cases, it is convenient to be able to switch from front camera to side camera to observe at a different angle.

Press the Camera Selection button [7] to switch between the two cameras.

Camera brightness

To be able to use the endoscope even in completely dark environments, an adjustable LED lamp is integrated in the camera head.

1. Press the brightness adjust button [6] or use the Elma-Scope App to decrease or increase the brightness.
2. Adjust the brightness so that the image is not overexposed or underexposed.

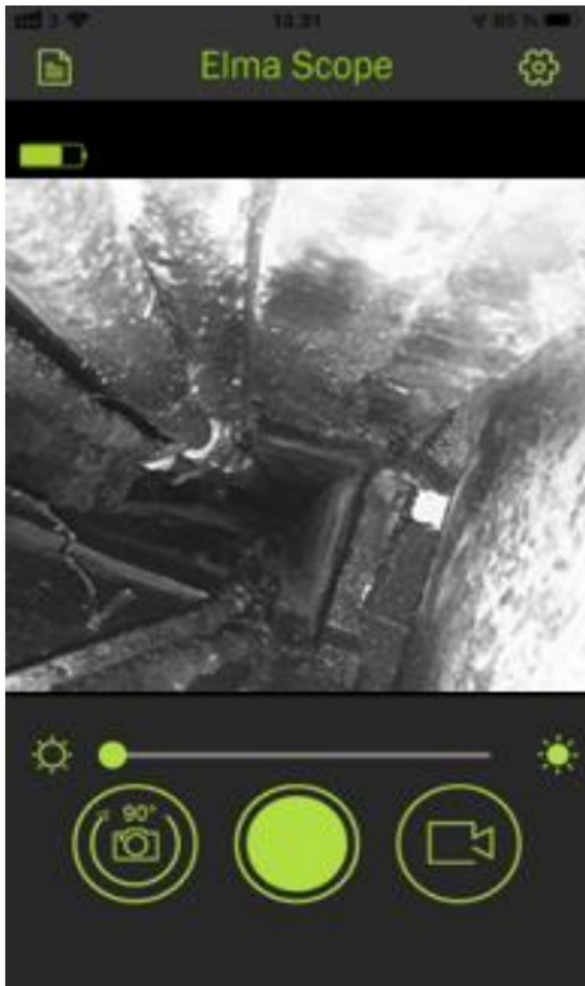
Connecting the endoscope with your SmartPhone



1. Turn the device **On**, press the **Power Button [8]**, **Wi-Fi Status [4]** flashes green
2. Activate the wireless network on the SmartDevice and see the wireless connections.
3. Select **ELMAB-SCOPE800**. There is no password.
4. Open the **Elma-Scope App**
5. The SmartPhone indicates that it is connected to the network, when **Wi-Fi Status [4]** is solid green.
6. Video image should be displayed on the screen within seconds

Note: The SmartPhone may not have internet access while it is connected to the **ELMABSCOPE800** network.

Taking a Picture



1. Move the endoscope to the area to be examined.
2. The image is displayed on the screen.

3. Adjusts, if necessary, the camera angle by turning it 90° with each press of the icon  adjusts if necessary, also the brightness with  until the image is absolutely perfect.

Each time you tap  icon, a photo is taken.


Note: Camera resolution can be set under settings.
Photos are automatically saved for subsequent processing.

Taking a video



1. Set the endoscope as described in **5.4** (1 to 4)

2. Touch the icon  to start video recording.

3. Recording stops by pressing the stop icon  or when the Maximum video recording time, set in settings has elapsed.

Note: Set **Maximum videorecording time** and **Frames per Sec.** under settings.

The video recordings are automatically saved for subsequent processing.

Charging the Battery



The battery should only be removed or replaced by a specialist/specialist workshop.

- The battery status icon shows the remaining battery power
- If the battery level is too low (a red battery indicator is displayed) it must be charged.

1. Connect the USB cable to the power supply and the "Mini USB" connector on the bottom of the **Elma B-Scope 800**
2. The endoscope turns on automatically.
3. The battery LED flashes green during charging



Technical Data

Battery	3.7V/DC, Lithium battery 2600 mAh
Camera:	Front Camera: 1280 x 720 pixels, 6 white LED Side Camera: 1280 x 720 pixels, 1 white LED
Camera diameter:	5,5 mm
Probe length:	App 1m
Video Frame Rate:	≤ 30 fps
FOV:	68°
Optimum Focus:	4~8 cm
Protection Class:	IP67 (Goose neck only)
Operating Temperature:	0 to 50°C
Storage Temperature:	20 to 60°C
*Elma Scope APP	This app is optimized for: iOS versions ≥ 6.0 og Android versions ≥ 4.0



Elma Instruments A/S
Ryttermarken 2 DK-3520 Farum
T: +45 7022 1000
F: +45 7022 1001
info@elma.dk
www.elma.dk

Documents / Resources

 Manual Elma B-Scope 800 2-7 Dansk/English 14-15 ELEM 17044540007 	elma instruments Elma B-Scope 800 Gearbox [pdf] User Guide Elma B-Scope 800, Elma, B-Scope 800, Elma B-Scope 800 Gearbox, Gearbox
---	--

