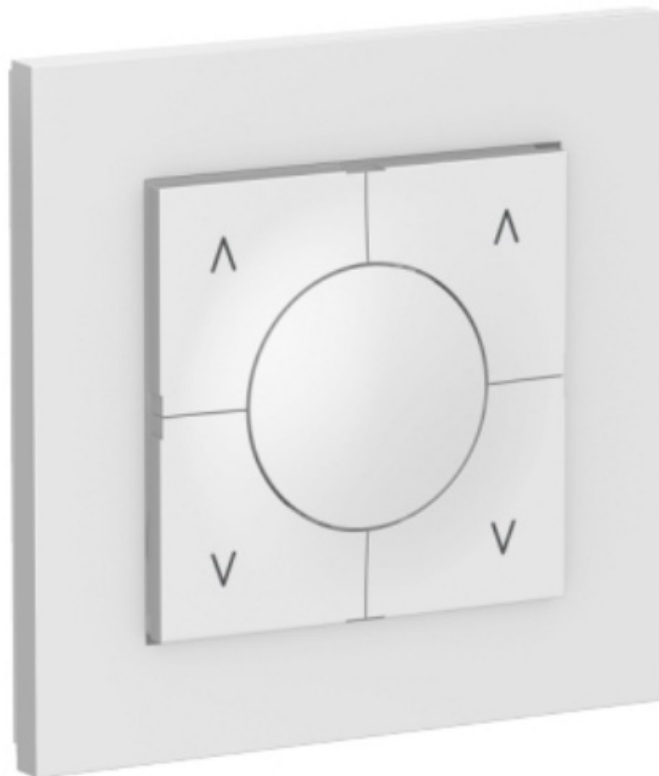




ELKO Wireless Push Smart Switch User Guide

[Home](#) » [ELKO](#) » ELKO Wireless Push Smart Switch User Guide 

ELKO Wireless Push Smart Switch



Contents

- 1 Legal Information
- 2 Safety Information
- 3 Smart Switch Push Wireless
- 4 Configuring The Device
- 5 Using The Device
- 6 Moments
- 7 Replacing The Battery
- 8 LED Indications
- 9 Troubleshooting
- 10 Technical Data
- 11 Trademarks
- 12 Customer Support
- 13 Documents / Resources
 - 13.1 References
- 14 Related Posts

Legal Information

The ELKO brand and any trademarks of ELKO AS and its subsidiaries referred to in this guide are the property of ELKO AS or its subsidiaries. All other brands may be trademarks of their respective owners.

This guide and its content are protected under applicable copyright laws and furnished for informational use only. No part of this guide may be reproduced or transmitted in any form or by any means (electronic, mechanical, photocopying, recording, or otherwise), for any purpose, without the prior written permission of ELKO.

ELKO does not grant any right or license for commercial use of the guide or its content, except for a non-exclusive and personal license to consult it on an "as is" basis. ELKO products and equipment should be installed, operated, serviced, and maintained only by qualified personnel.

As standards, specifications, and designs change from time to time, information contained in this guide may be subject to change without notice.

To the extent permitted by applicable law, no responsibility or liability is assumed by ELKO and its subsidiaries for any errors or omissions in the informational content of this material or consequences arising out of or resulting from the use of the information contained herein.

Safety Information

Important information

Read these instructions carefully and look at the equipment to become familiar with the device before trying to install, operate, service, or maintain it. The following special messages may appear throughout this manual or on the equipment to warn of potential hazards or to call attention to information that clarifies or simplifies a procedure.



The addition of either symbol to a "Danger" or "Warning" safety label indicates that an electrical hazard exists which will result in personal injury if the instructions are not followed.



This is the safety alert symbol. It is used to alert you to potential personal injury hazards. Obey all safety messages that accompany this symbol to avoid possible injury or death.



DANGER

DANGER indicates a hazardous situation which, if not avoided, will result in death or serious injury. Failure to follow these instructions will result in death or serious injury.

WARNING

WARNING indicates a hazardous situation which, if not avoided, could result in death or serious injury.

CAUTION

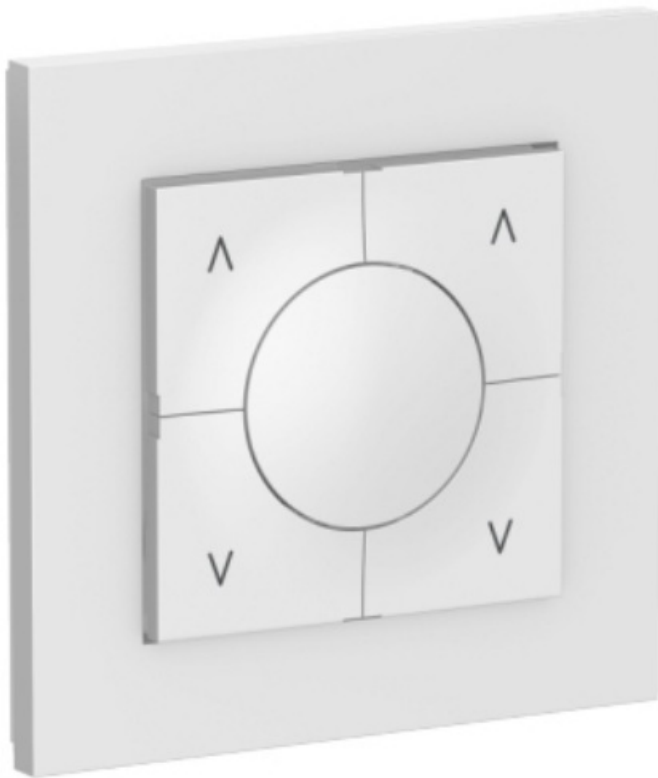
CAUTION indicates a hazardous situation which, if not avoided, could result in minor or moderate injury.

NOTICE

NOTICE is used to address practices not related to physical injury.

Smart Switch Push Wireless

- EKO0711x



For your safety

DANGER

HAZARD OF ELECTRIC SHOCK, EXPLOSION, OR ARC FLASH While installing the device on a wall box or an existing switch outlet combination, always isolate the 230 V AC cables by applying an adhesive silver foil on the fixing plate.

Failure to follow these instructions will result in death or serious injury.

About the device

The SmartSwitch Push Wireless (hereinafter referred to as Wireless switch / Freelocate switch) is a battery-powered Wireless switch that is used to control a group of Zigbee devices (such as light and shutter) within the same Zigbee network. The device can be configured through the ELKO Smart app.

Features of the Wireless switch:

- Control a group (such as lighting and shutter control).
- Trigger/activate a moment (such as Movie Night, Good Night Moment).
- Low battery notification.

Installing the device

Refer to the installation instruction supplied with this product. See SmartSwitch Push Wireless.

Pairing the device with Smart Hub

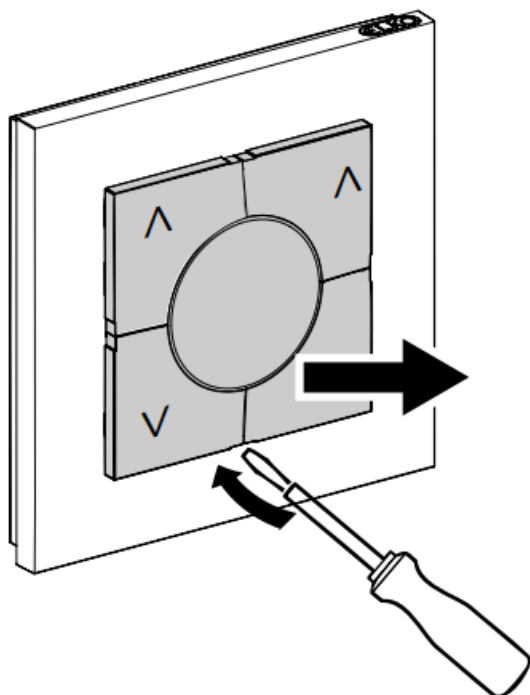
Using the ELKO Smart app, first pair your device with the ELKO SmartHub to access and control the device. You can either add the device manually or do an auto-scan to pair it.

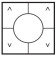
Pairing Device Manually

To pair the device manually:

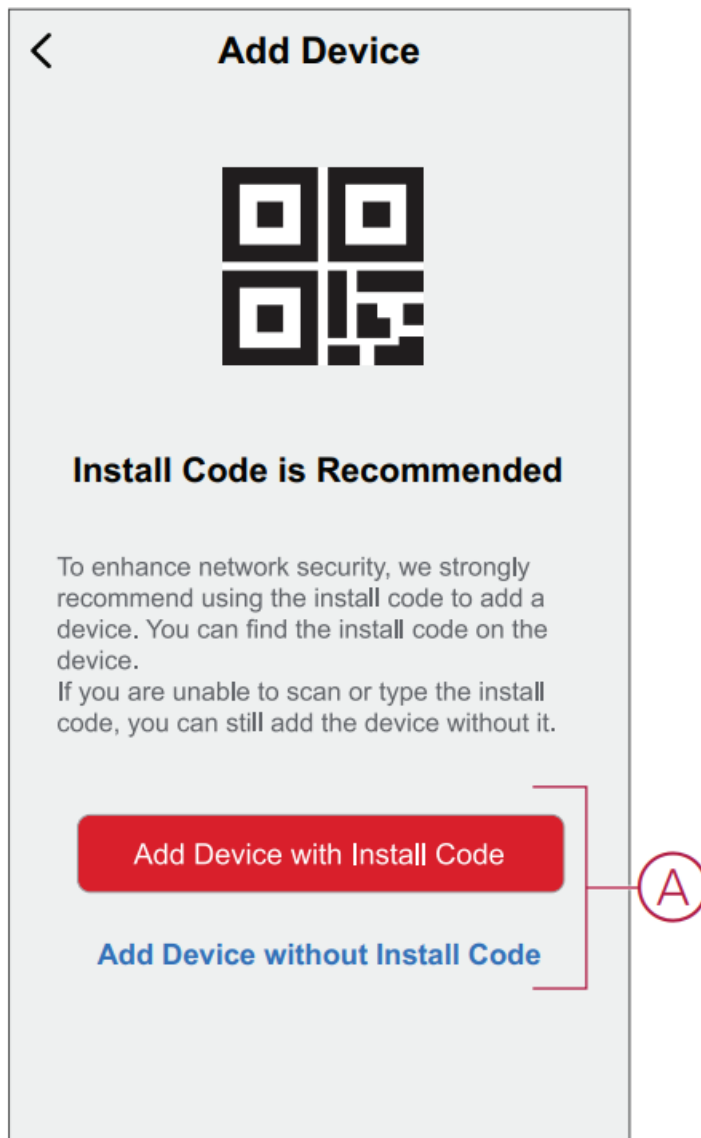
NOTE: Remember to insert the battery to turn on the device.

1. Remove the rockers using a screwdriver to see the LED.



2. On the Home page, tap +.
3. Tap , select ELKO SmartHUB on the slide-up menu and tap Done.
4. Select any one of the options to add device (A):
 - Add Device with Install Code

- Add Device without Install Code

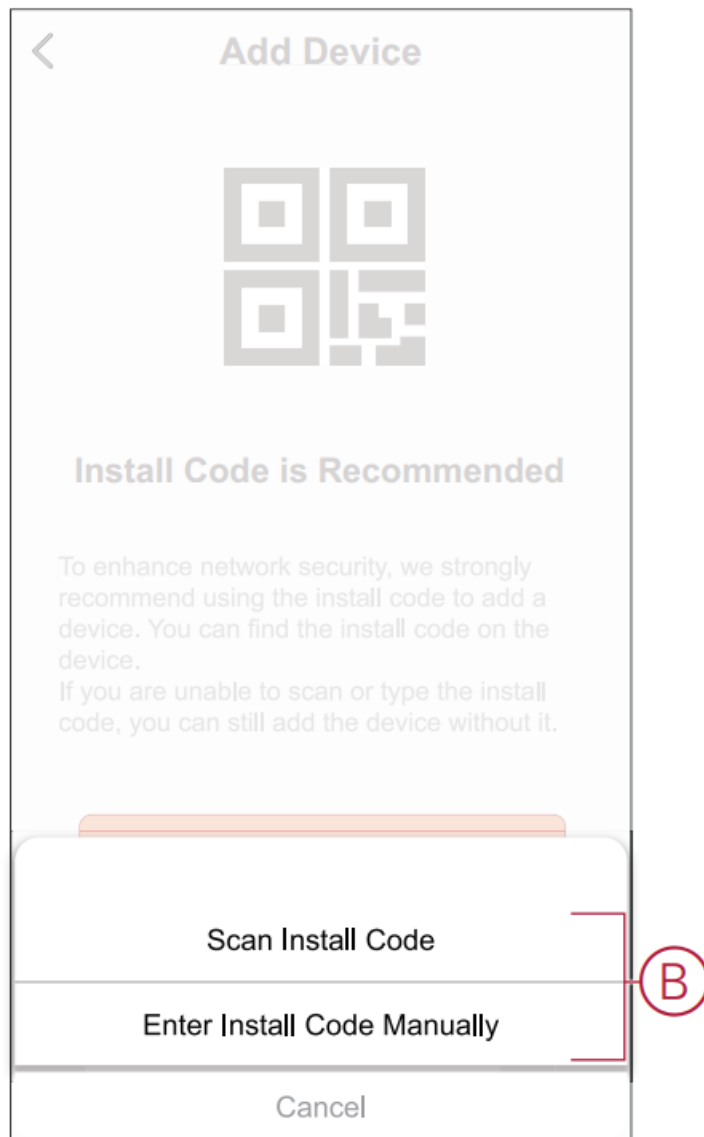


TIP: It is recommended to add the device with install code.

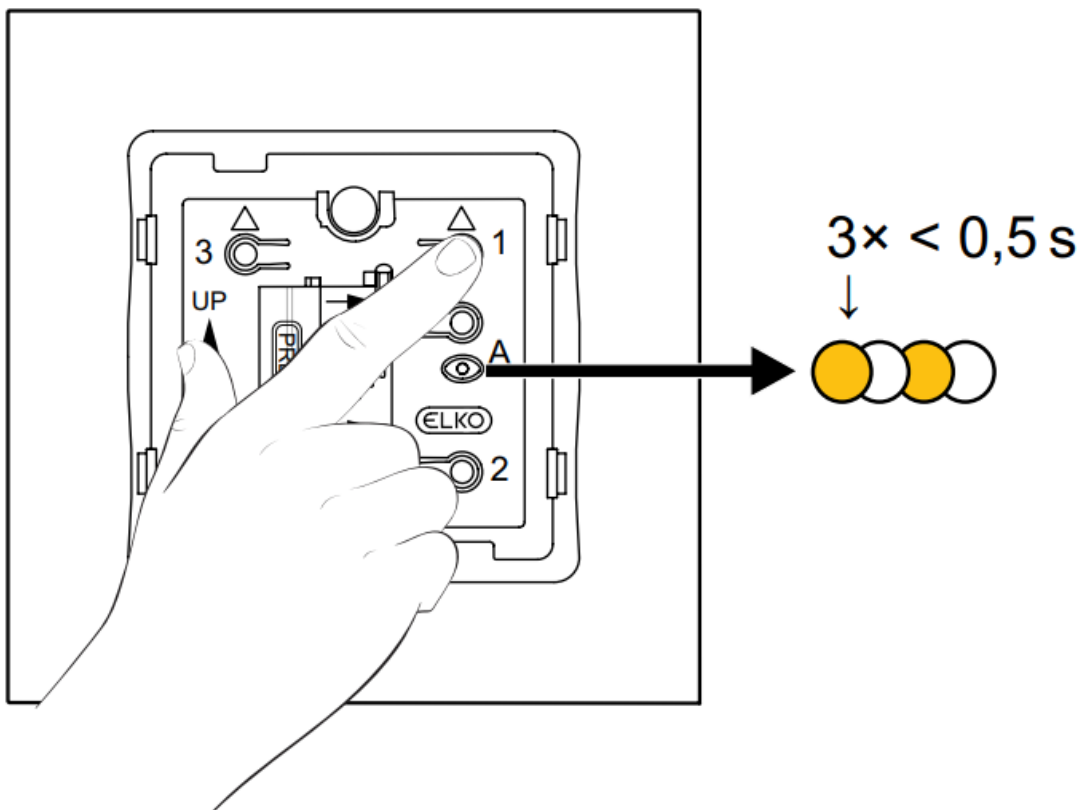
5. To pair the device with an install code, tap Add Device with Install Code to display the slide-up menu. Select any one of the options (B):

- Scan Install Code: you can scan the device for the install code.
- Enter Install Code Manually: you can manually enter the install code from the device.

TIP: you can find the install code on the rear side of the device. After scanning or entering the install code, proceed to Step 7.



6. To pair the device without install code, tap Add Device without Install Code.
7. Short press the top right push button 3 times.

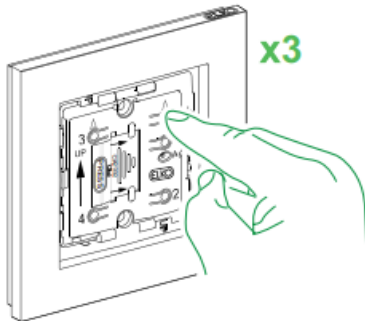


8. In the app, select Confirm LED is blinking amber (C) and tap Start Configuration.

Cancel

How to pair device

Short-press the push button 3 times.

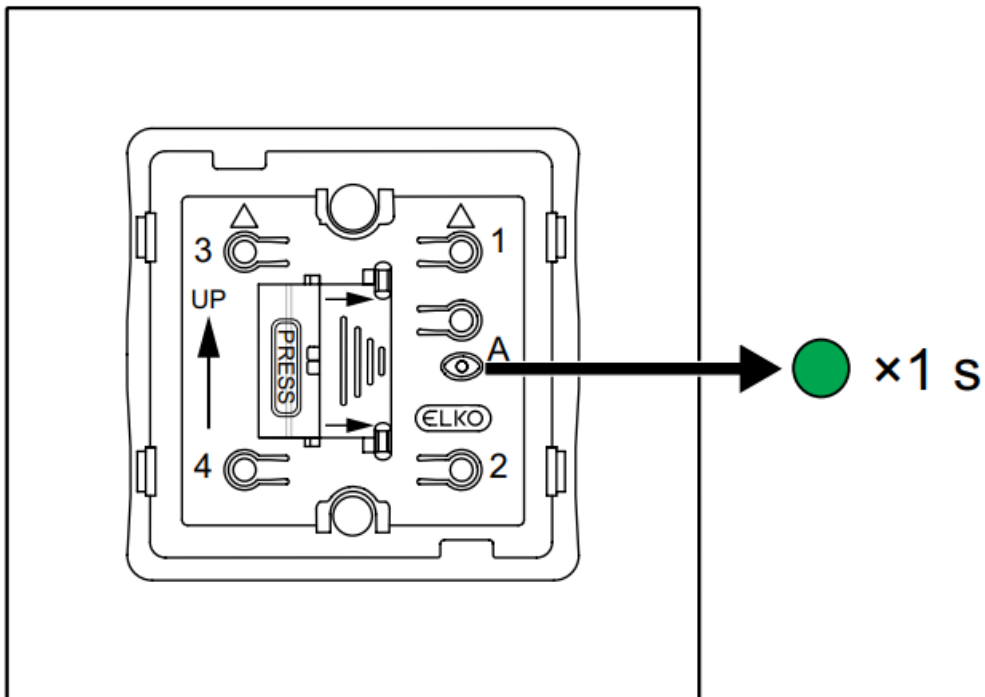


✓ Confirm LED is blinking amber

Start Configuration

Ⓒ

9. After a few seconds, a solid green LED indicates that the device has been successfully paired to the ELKO SmartHUB.



10. Tap Done when the pairing is successful.

Pairing device with auto scan

Pairing the device with auto scan automatically discovers the device when the corresponding device is powered on.

To pair the device:

NOTE: Remember to insert the batteries before powering on the device.

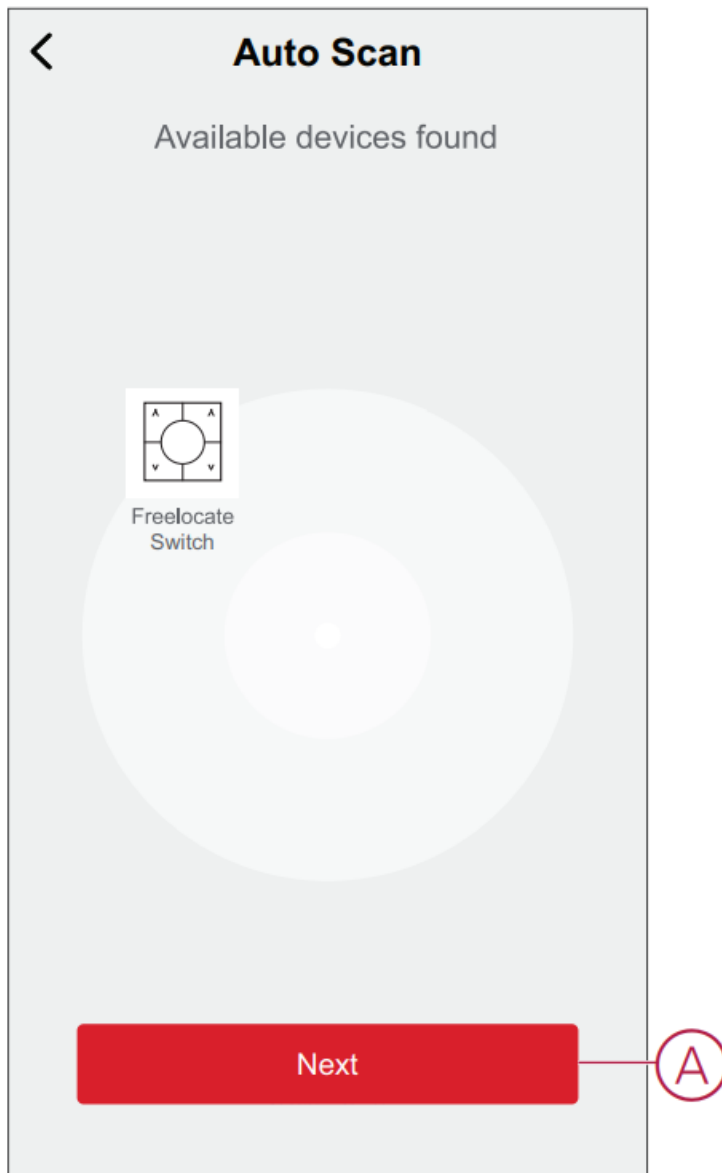
1. Remove the rockers using a screwdriver to see the LED.
2. On the Home page, tap +.
3. Tap Auto scan > Confirm.
4. Enable permissions to Access location and Wi-Fi for scanning device and tap Start scanning.

NOTE: If you have multiple hubs, do Step 5 or proceed to Step 6.

5. Tap Select hub and select the ELKO SmartHUB from the slide-up menu.
6. Short press the top right push button 3 times (< 0,5 s) and wait for a few seconds until the device search is complete.

TIP: If you want to pair multiple devices at once, perform step 6 on each device and wait for a few seconds for them to be detected.

7. Tap Next (A) and select Freelocate Switch (Wireless switch referred as Freelocate Switch in the app).





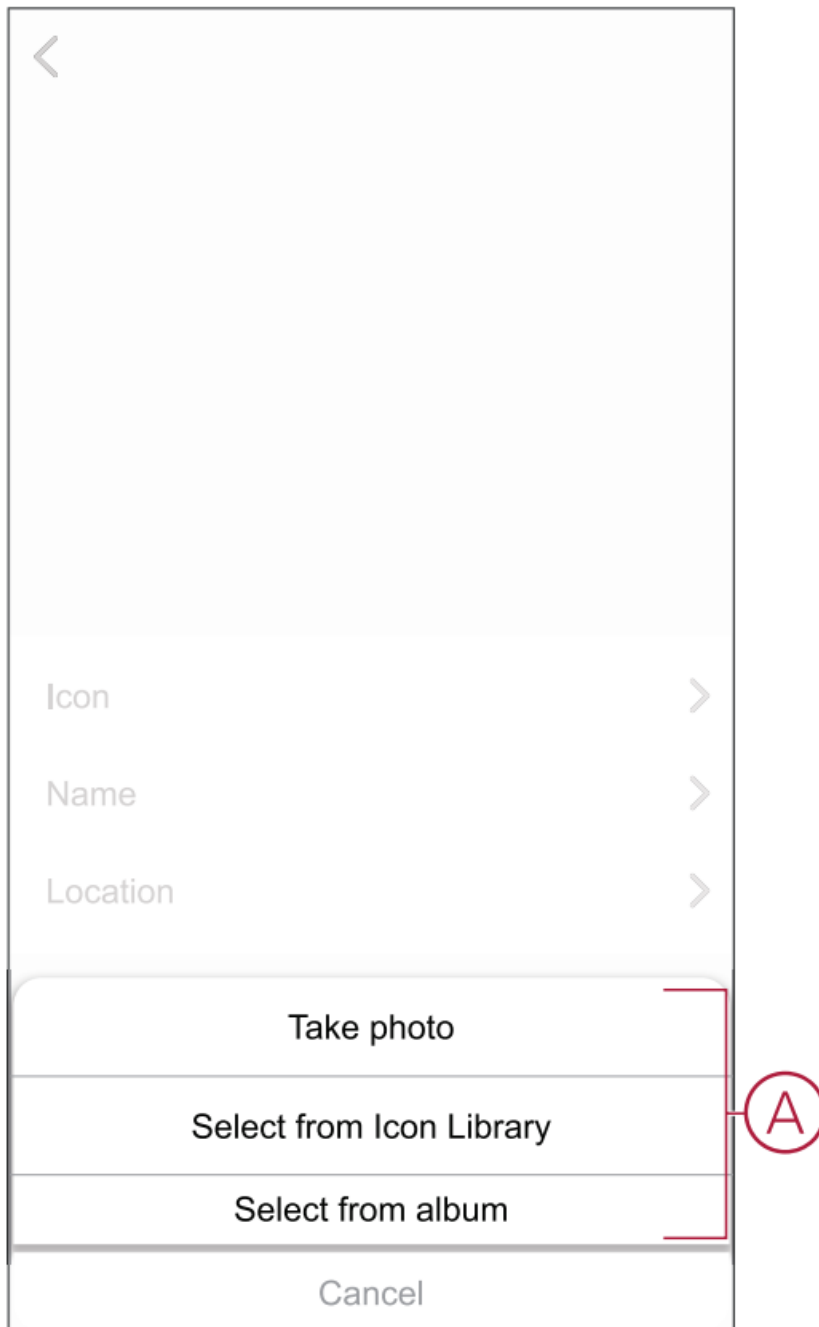
8. Once the device is added successfully, tap Done.

Configuring The Device

Changing the device icon



You can change the device icon using the ELKO Smart app.

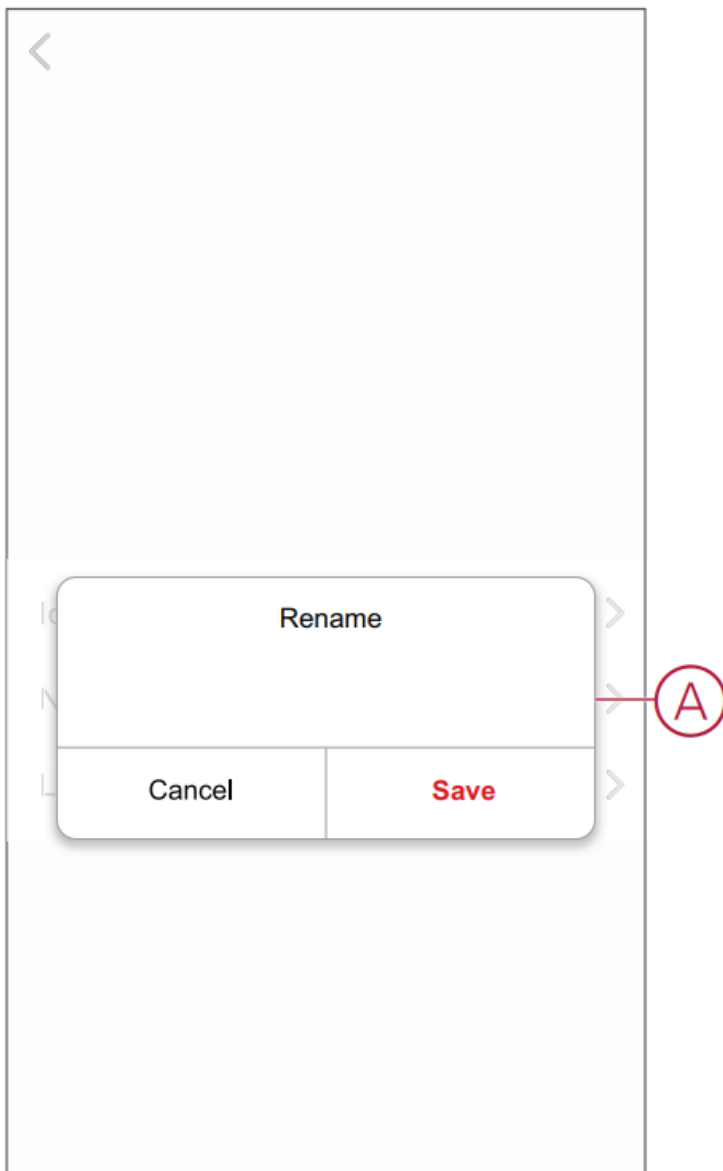
1. On the Home page, select the device for which you wish to change the icon.
2. At the top-right corner of the screen, tap .
3. Tap edit  next to the device name.
4. Tap Icon to view the menu.
5. In the slide-up menu, select any one of the following (A) to change the device icon:
 - Take photo – allows you to click a photo from the mobile camera.
 - Select from Icon Library – allows you to select an icon from the app library.
 - Select from Album – allows you to select a photo from the mobile gallery.



Renaming the device



You can rename the device using the ELKO Smart app.


1. On the Home page, select the device for which you wish to rename.
2. At the top-right corner of the screen, tap .
3. Tap edit  next to the device name.
4. Tap Name, enter the new name (A) and then tap Save.



Changing the device location

You can change the device location using the ELKO Smart app.

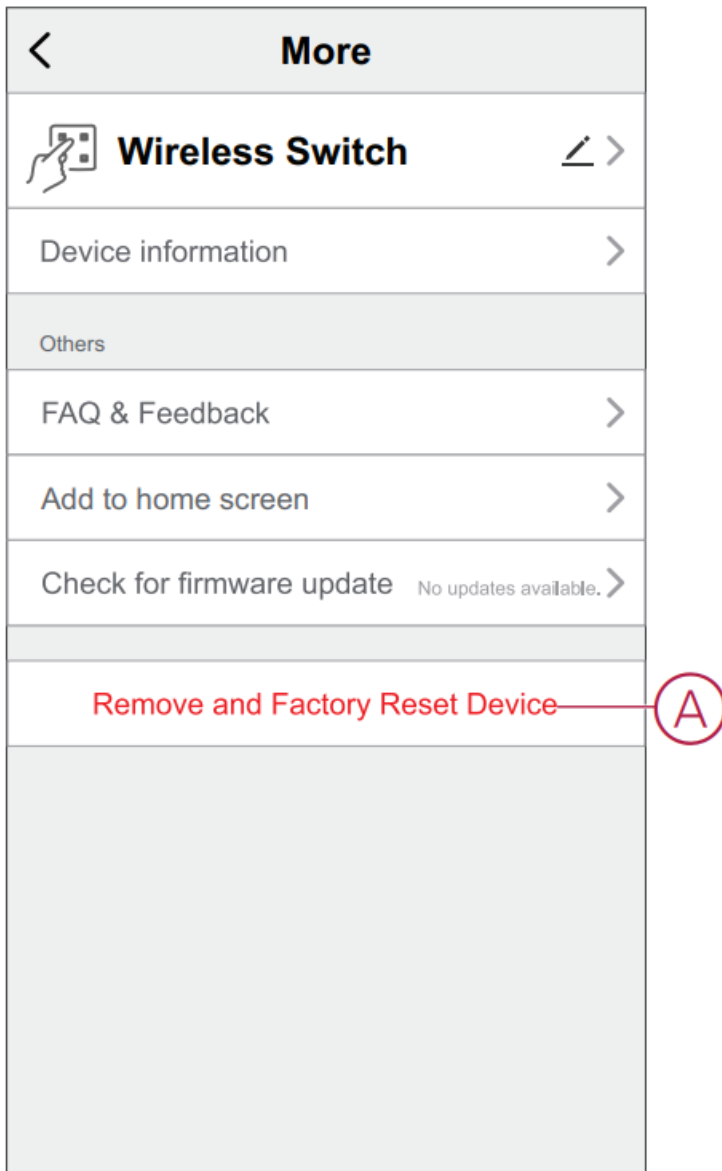
1. On the Home page, select the device for which you wish to change the location.
2. At the top-right corner of the screen, tap .
3. Tap edit  next to the device name.
4. Tap Location.
5. Select the desired location from the list (A) and then tap Save.

Device location		Save
Living Room	<input type="radio"/>	
Master Bedroom	<input type="radio"/>	
Kitchen	<input type="radio"/>	
Dining Room	<input type="radio"/>	
Study Room	<input type="radio"/>	
Kids Room	<input type="radio"/>	

Removing The Device

Using the ELKO app, you can remove a device from the device list.

1. On the Home page, tap All devices > Wireless switch.
2. Tap to display more details and tap Remove and Factory Reset Device (A).



3. Short press the top-right push button 3 times to wake up the device and tap Confirm.

TIP: On the Home page, you can tap and hold the Wireless switch to remove the device.

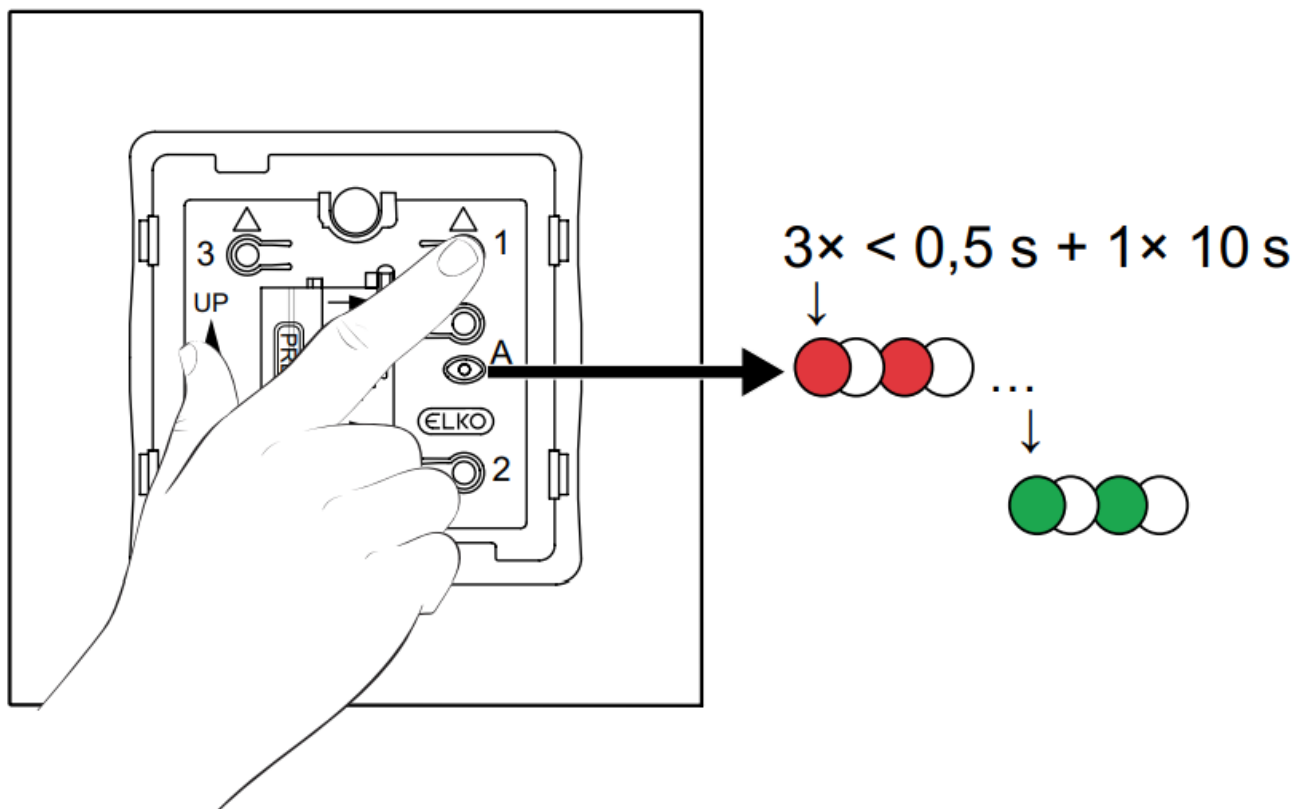
NOTE: By removing the device, you will reset the device. If you still have a problem with the reset, refer to resetting the device, page 10.

Resetting the device

You can reset the Wireless switch to factory default manually.

To reset the device:

1. Remove the rockers from the module. Short press the top-right push button 3 times (< 0.5 s) and then press and hold the push button (>10 s).
2. After 10 s, LED starts blinking red, then release the push button.



The Wireless switch restarts and blinks green for a few seconds.

NOTE:

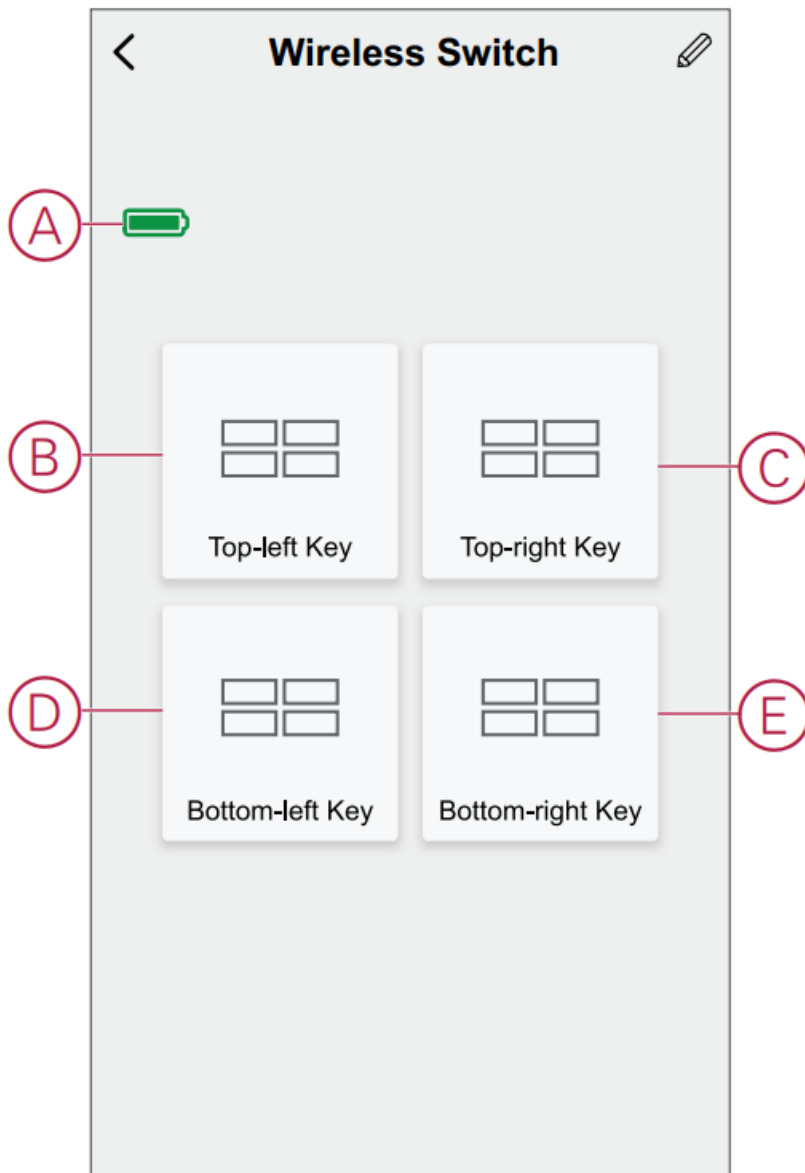
- After reset, the LED turns off to save the battery.
- All configuration data, user data, and network data are deleted.

Using The Device

The control panel of the Wireless switch allows you to add lighting group, shutter group and moment to each push button.

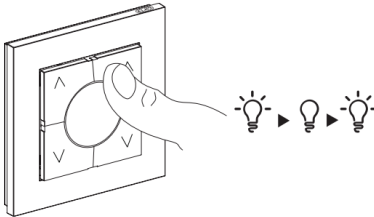
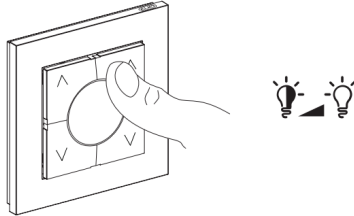
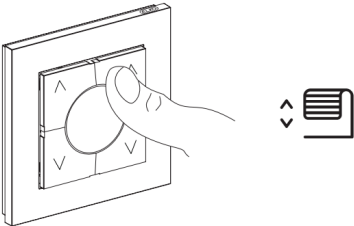
On the Wireless switch control panel, you can see the following:

- Battery level (A)
- Top left key (B)
- Top right key (C)
- Bottom left key (D)
- Bottom right key (E)



NOTE: The app assigns both top and bottom keys to a lighting and shutter group, while any one key is assigned to a moment.

Functions of the Wireless switch push button:

Group	Devices	Push button function
Lighting group	Switch	<ul style="list-style-type: none"> • Turn on: single press top key. • Turn off: single press bottom key. 
	Dimmer	<ul style="list-style-type: none"> • Turn on: single press top key.
		<ul style="list-style-type: none"> • Turn off: single press bottom key. • Increase brightness: long press top key. • Decrease brightness: long press bottom key. 
Shutter group	Shutter	<ul style="list-style-type: none"> • Open: long press top key. • Stop opening: single press top/bottom key. • Close: long press bottom key. • Stop closing: single press top/bottom key. 
Moment	Triggers the devices that are added in a moment	<ul style="list-style-type: none"> • Turn on: single press the key . <p>NOTE: You cannot turn off a moment. To go back to it's previous state, you need to create another moment, page 18 for that.</p>

Lighting group


Using the ELKO app, you can create lighting groups and assign them to one or more push buttons.

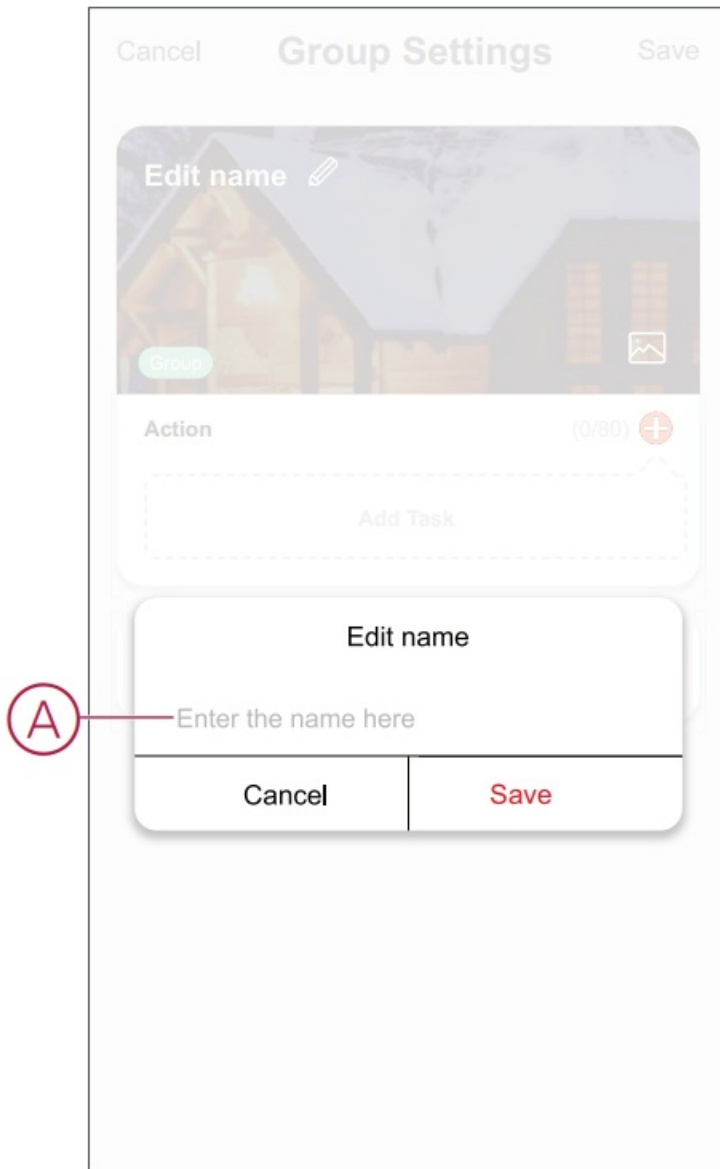
TIP: A lighting group can be assigned to left top/bottom keys or the right top/ bottom keys or both.

Adding a lighting group


To add a lighting group to the top and bottom left key:

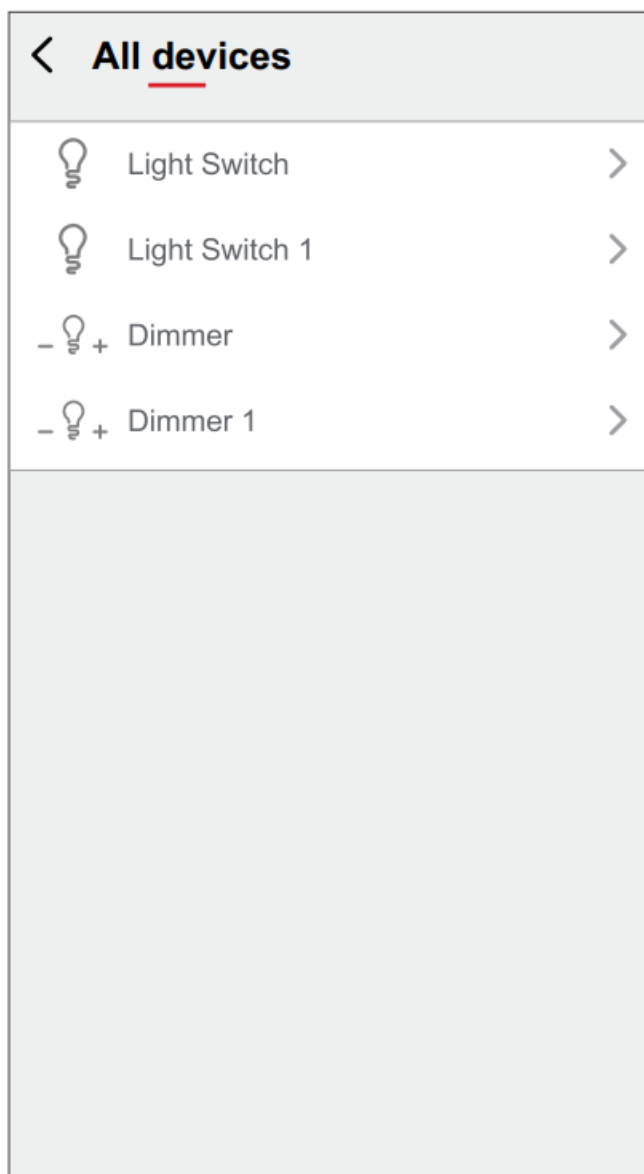
1. On the Home page, tap All devices > Wireless switch.
2. On the control panel page, tap Top left key > Lighting Group > +.
3. Tap Edit name, enter the group name (A) and tap Save.

TIP: You can choose the cover image that represents your group by tapping  .

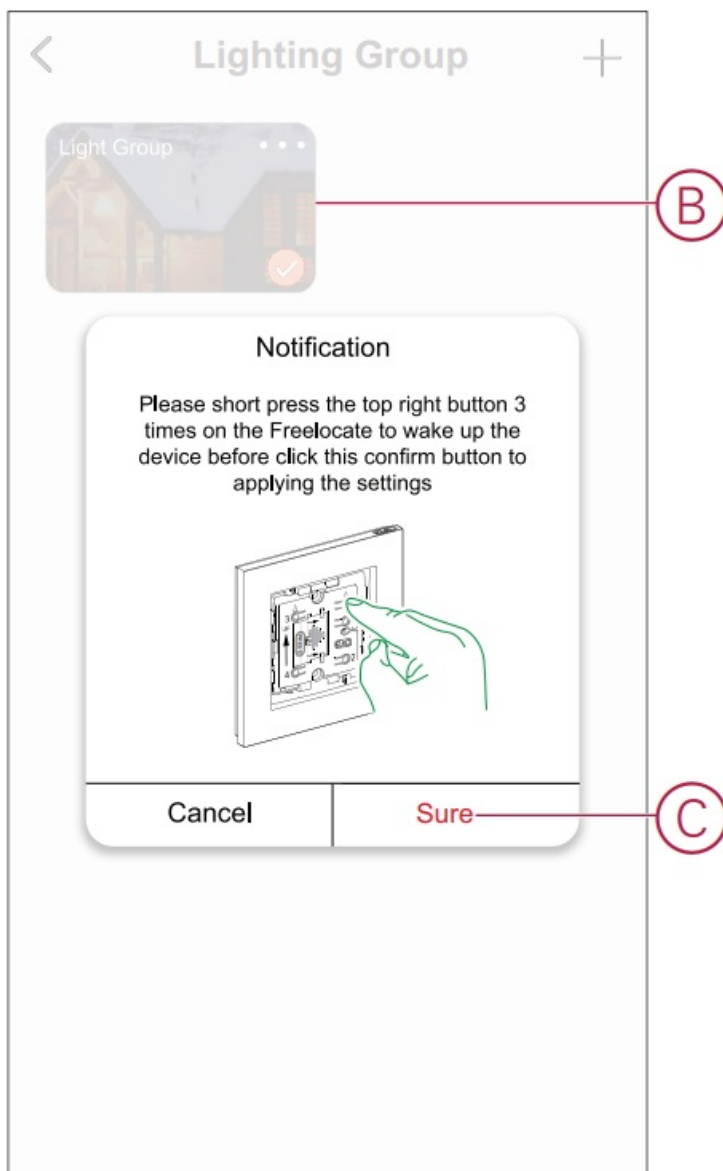


4. Tap Add Task to select any device from the list and select its function, then tap Next.

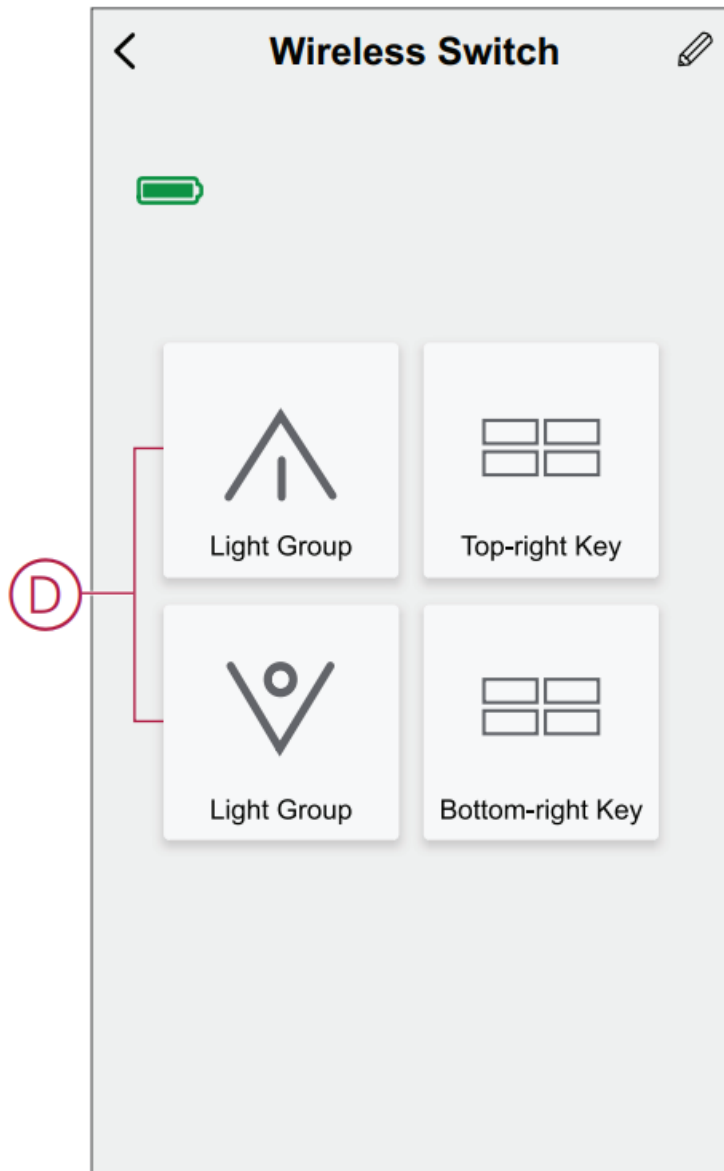
NOTE: You can add one or more actions using .



5. Once all the actions are set, tap Save.
6. On the Lighting Group page, select the light group (B) you want to assign to the push button.
7. Short press the top right push button 3 times to activate the device and tap Sure (C) on the app.



The lighting group is now added to the top and bottom left key (D).

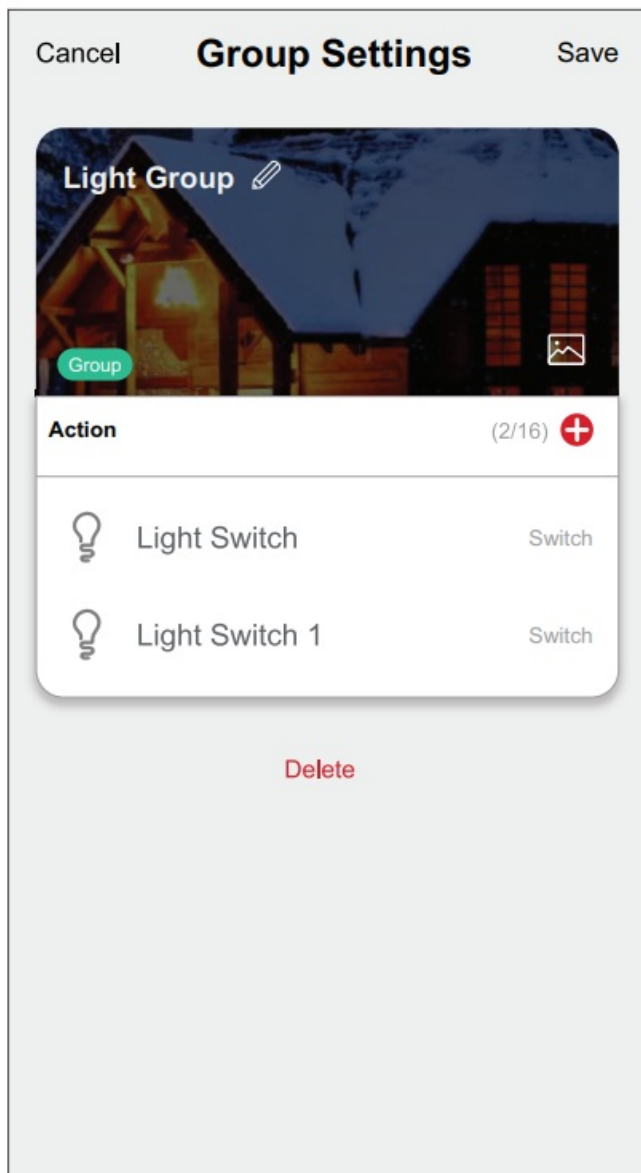


NOTE: If you add a shutter/moment group to the top/bottom left key, then the app removes the lighting group from the top/bottom left key.

Editing a lighting group

To edit a lighting group:

1. Navigate to Wireless switch > Top left key > Lighting Group.
2. Locate the lighting group you want to edit and tap ●●●.
3. On the Edit page, you can tap each item to change the settings and tap Save.

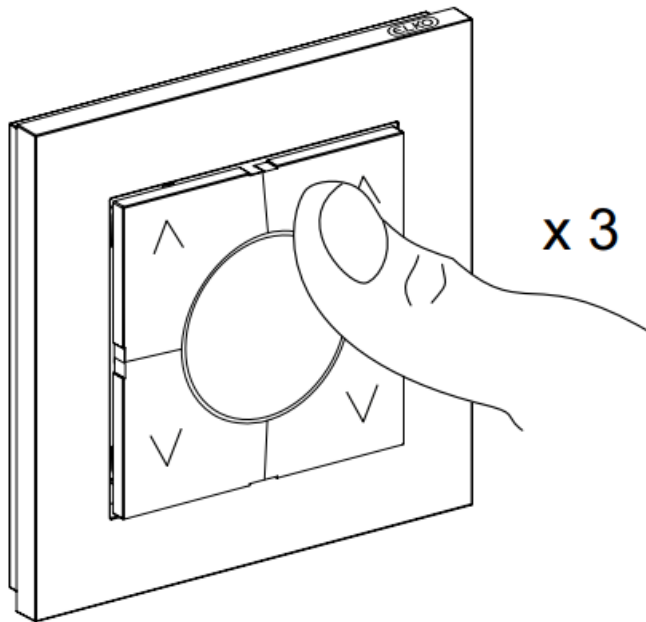


Unbinding a lighting group

Unbinding the lighting group allows you to remove the lighting group from the assigned keys without deleting the lighting group.

To unbind a lighting group:

1. Go to the control panel and tap Top left key.
2. Tap Unbind.
3. Short press the top right push button 3 times on the Wireless switch to activate the device and tap Sure on the app.



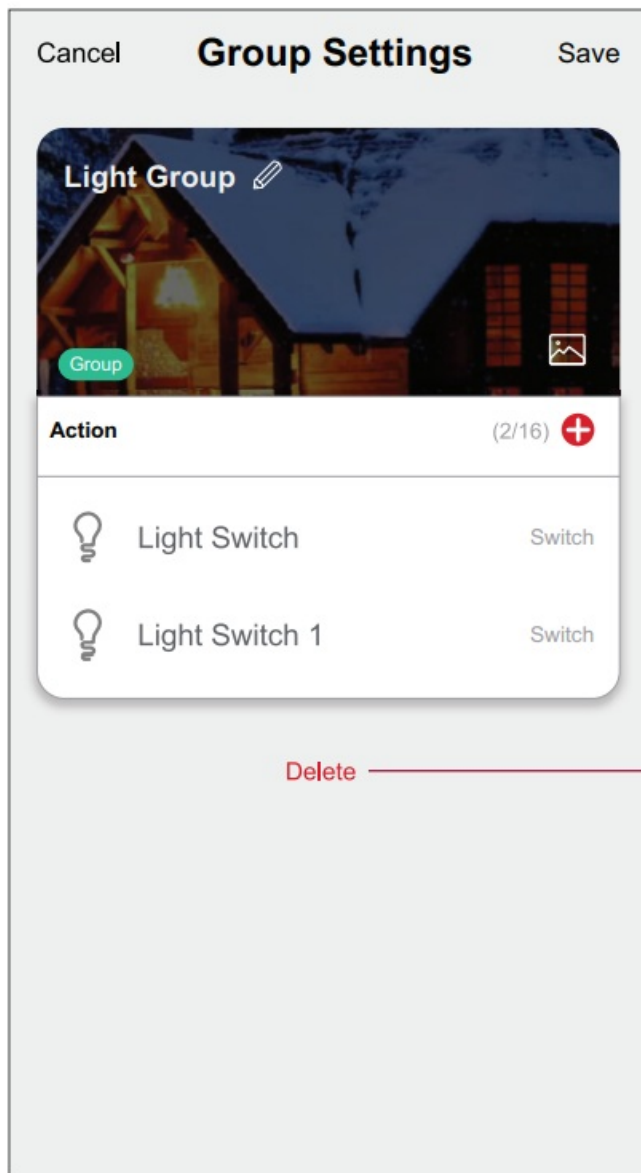
The lighting group is now removed from the top and bottom left key.

Deleting a lighting group

To delete a lighting group:

1. Navigate to Wireless switch > Top left key > Lighting Group.
2. Locate the lighting group you want to delete and tap .
3. Tap Delete).

NOTE: Deleting a lighting group will unbind the lighting group from the keys.



Shutter group


Using the ELKO app, you can create shutter groups and assign them to one or more Wireless switch push buttons.

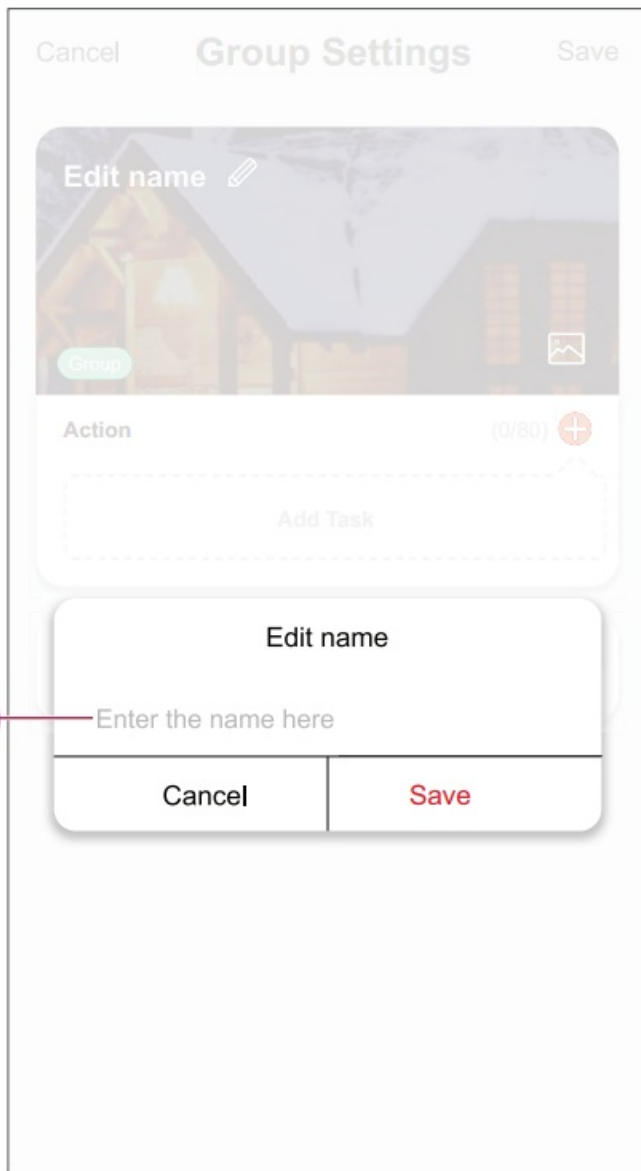
TIP: A shutter group can be assigned to the left top/bottom keys, the right top/ bottom keys or both.

Adding a shutter group


To add a shutter group to the top and bottom right key:

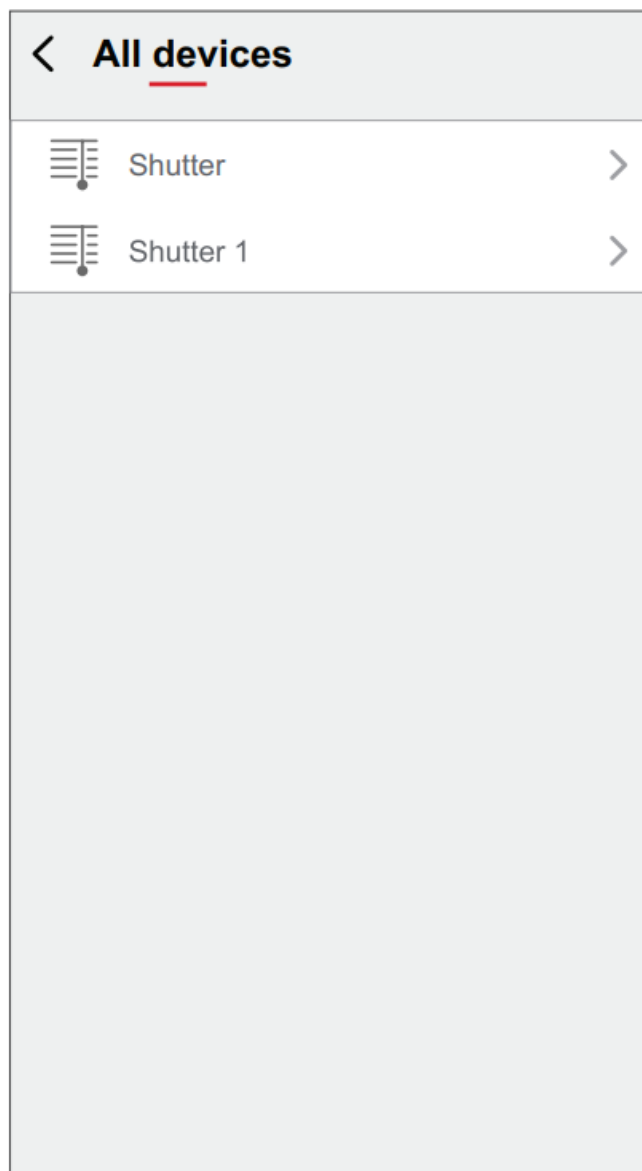
1. On the Home page, tap All devices > Wireless switch.
2. On the control panel page, tap Top right key > Shutter Group > +.
3. Tap Edit name, enter the group name (A) and tap Save.

TIP: You can choose the cover image that represents your group by tapping .

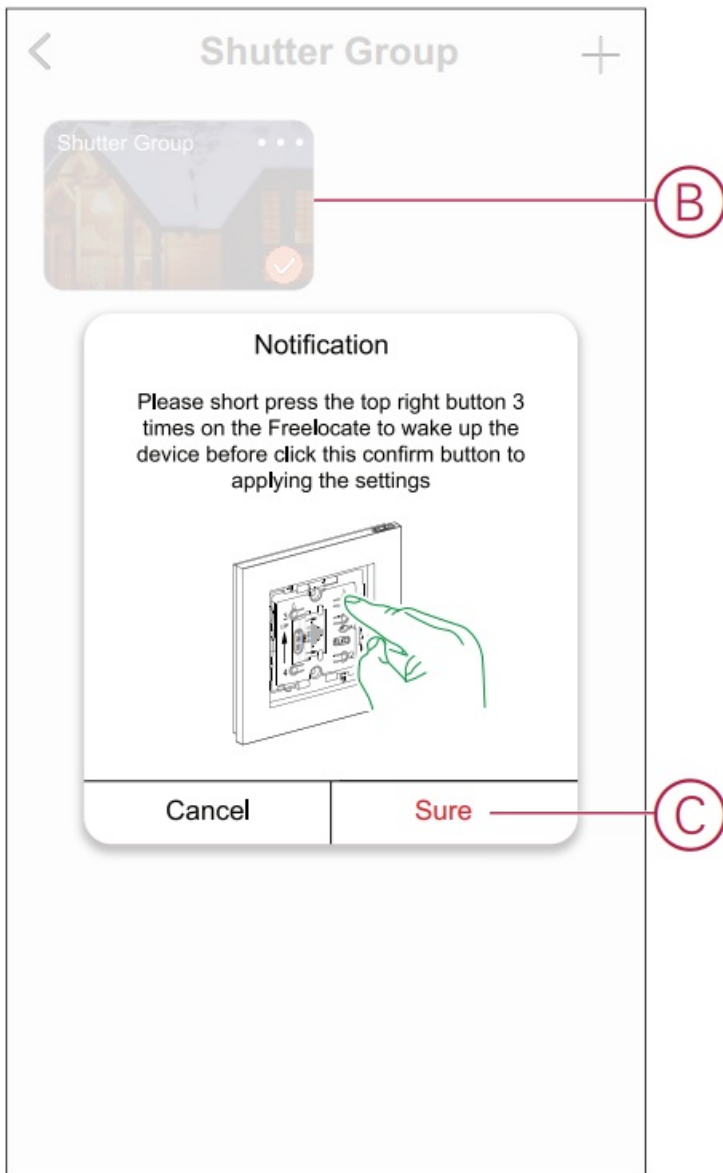


4. Tap Add Task to select any device from the list, then tap Control > Next.

NOTE: You can add one or more actions using .



5. Once all the actions are set, tap Save.
6. On the Shutter Group page, select the shutter group (B) you want to assign to the push button.
7. Short press the top right push button 3 times on the Wireless switch to activate the device and tap Sure on the app.



8. Short press the top-right push button 3 times on the Wireless switch to activate the device.

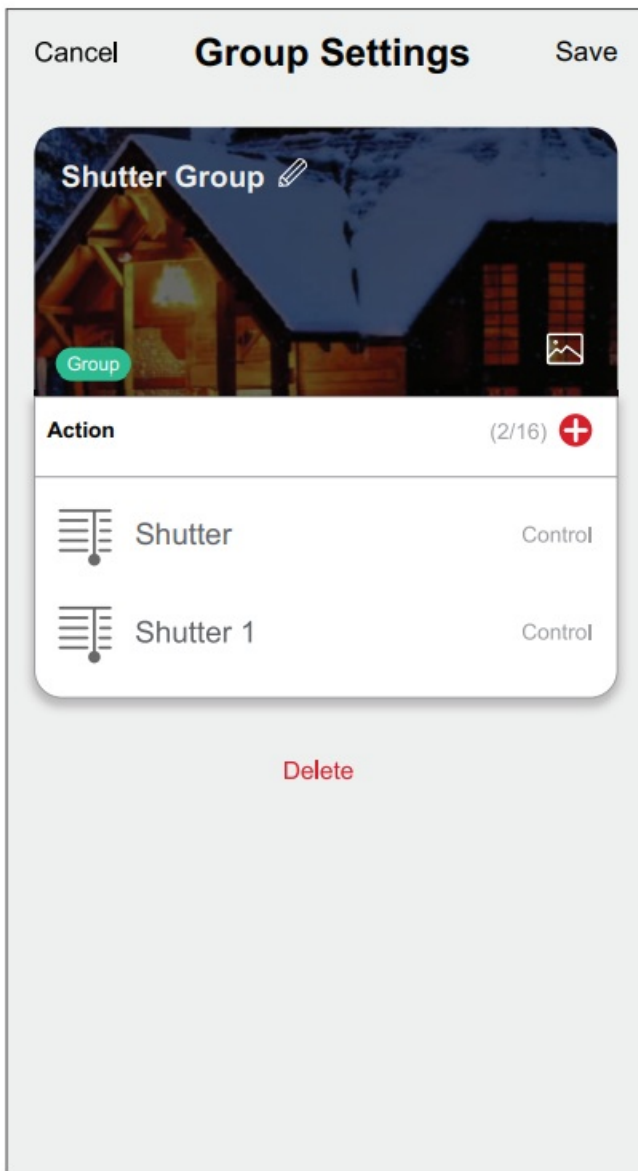
The shutter group is now added to the top and bottom right key.

NOTE: If you add a lighting/moment group to the top/bottom right key, then the app removes the shutter group from the top/bottom right key.

Editing a shutter group

To edit a shutter group:

1. Navigate to Wireless switch > Top right key > Shutter Group.
2. Locate the shutter group you want to edit and tap ●●●.
3. On the Edit page, you can tap each item to change the settings and tap Save.

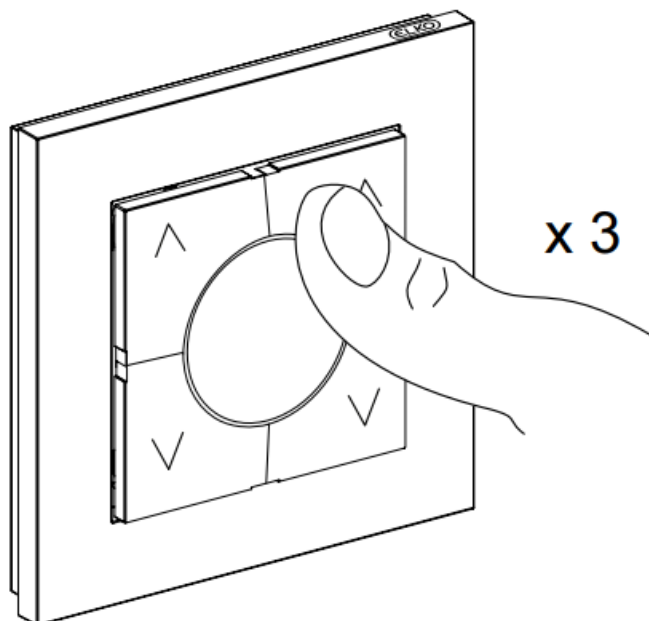


Unbinding a shutter group

Unbinding the shutter group allows you to remove the shutter group from the assigned keys without deleting the shutter group.

To unbind a shutter group:

1. Go to the control panel and tap Top right key.
2. Tap Unbind.
3. Short press the top right push button 3 times on the Wireless switch to activate the device and tap Sure on the app.



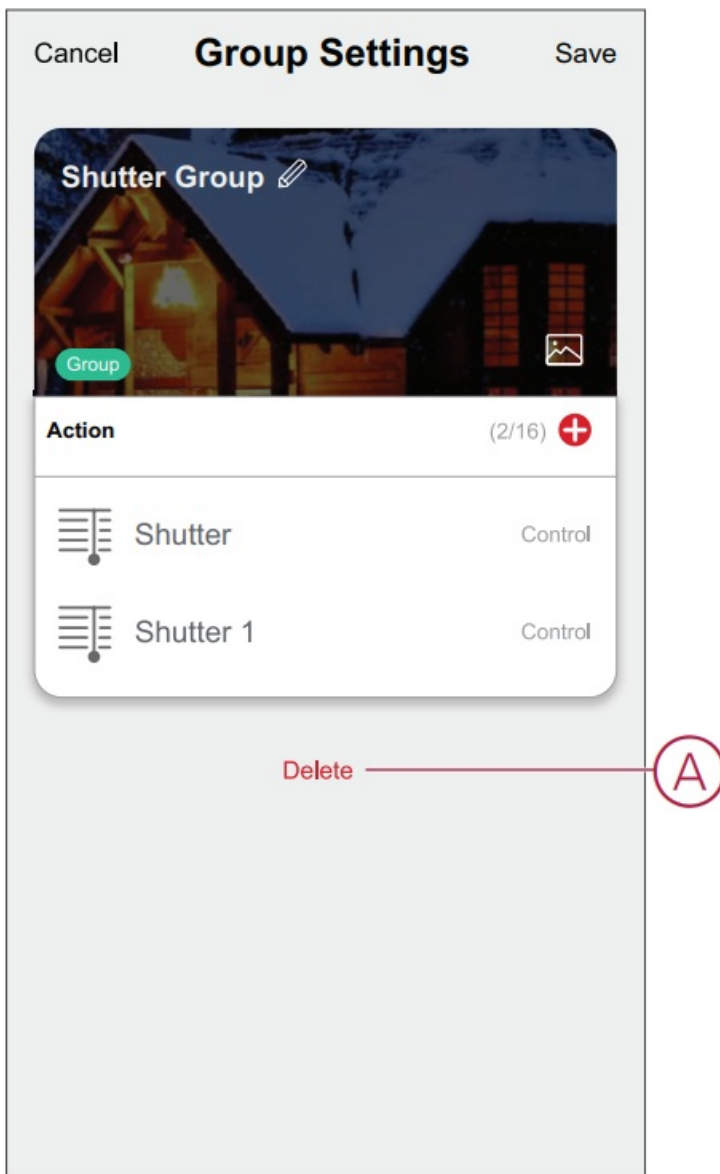
The shutter group is now removed from the top and bottom right keys.

Deleting a shutter group

To delete a shutter group:

1. Navigate to Wireless switch > Top right key > Shutter Group.
2. Locate the shutter group you want to delete and tap ●●●.
3. Tap Delete.

NOTE: Deleting the shutter group will unbind the shutter group from the keys.



Moments

Moment allows you to group multiple actions that are usually performed together.

Using the ELKO app, you can create moments based on your needs (such as movie night) and configure them to the Wireless switch push buttons.

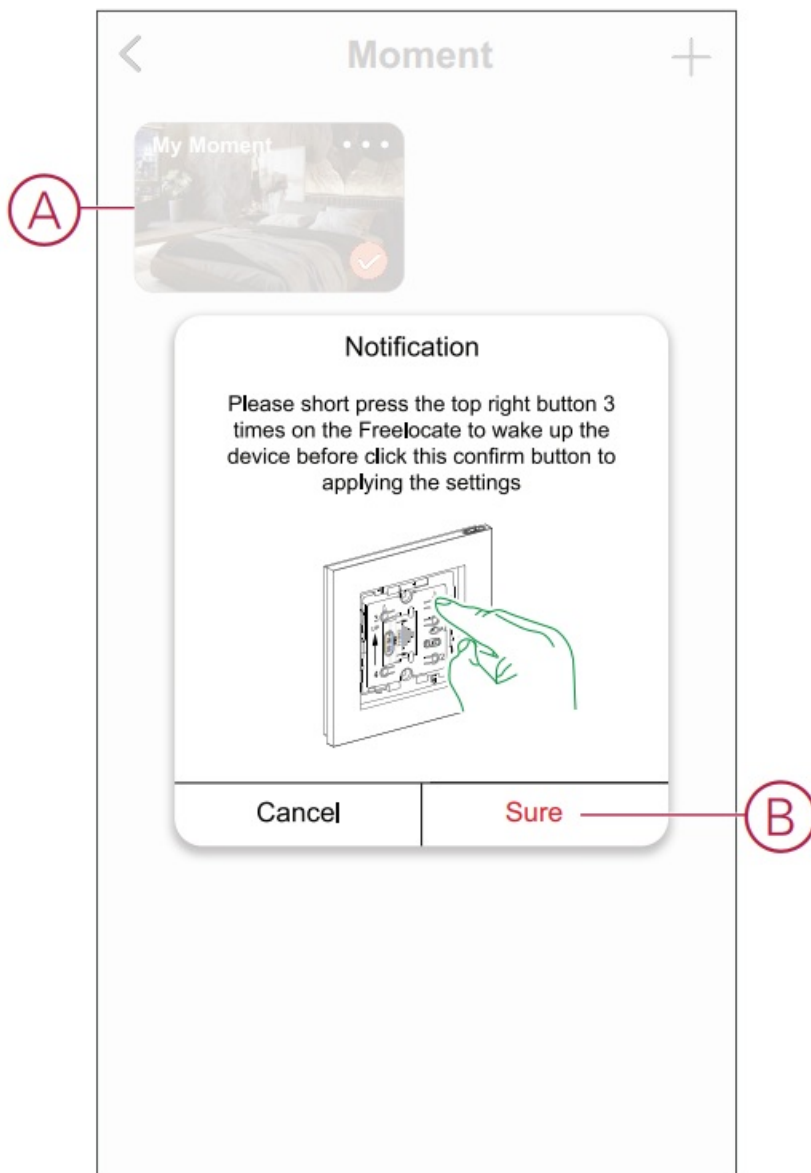
TIP: A moment can be assigned to any of the four keys individually.

Adding a moment to the Wireless switch

Using the ELKO app, you can add a moment to the Wireless switch push buttons.

To add a moment to the Wireless switch key(s):

1. On the Home page, tap All devices > Wireless switch.
2. On the control panel page, tap Top right key > Moment.
3. Select a moment from the list of created moments (A).
4. Short press the top right push button 3 times on the Wireless switch to activate the device and tap Sure (B) on the app.



5. Short press the top-right push button 3 times on the Wireless switch to activate the device.

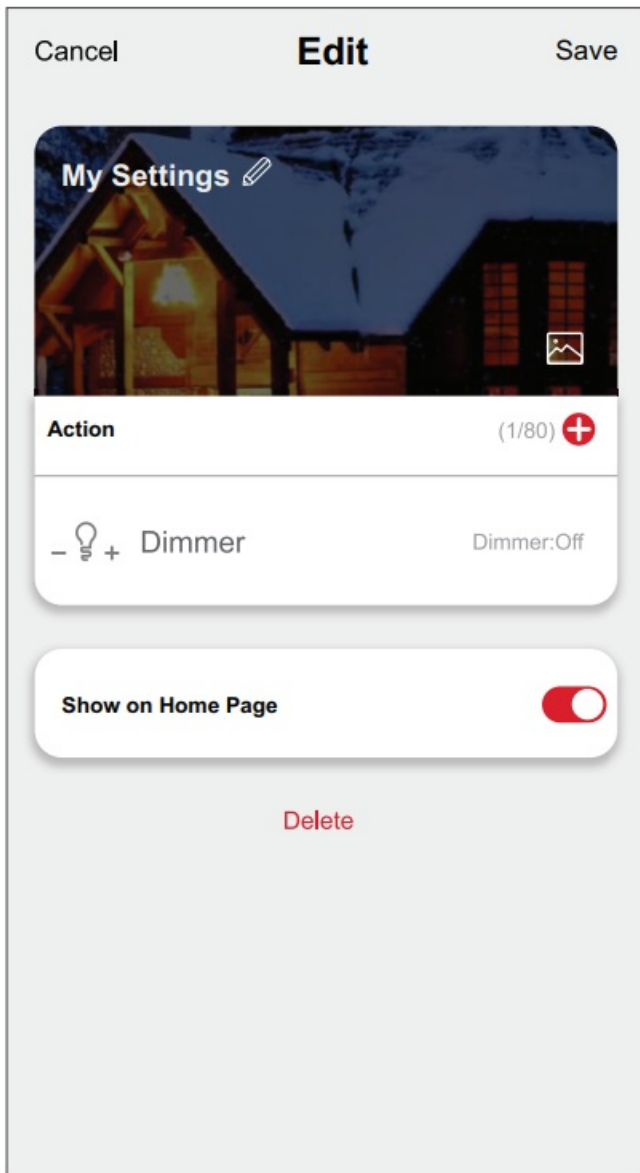
The moment is now added to the Top right key.

NOTE: If you add a lighting/shutter group to the bottom right key, then the app removes the moment from the top right key.

Editing a moment

To edit a moment:

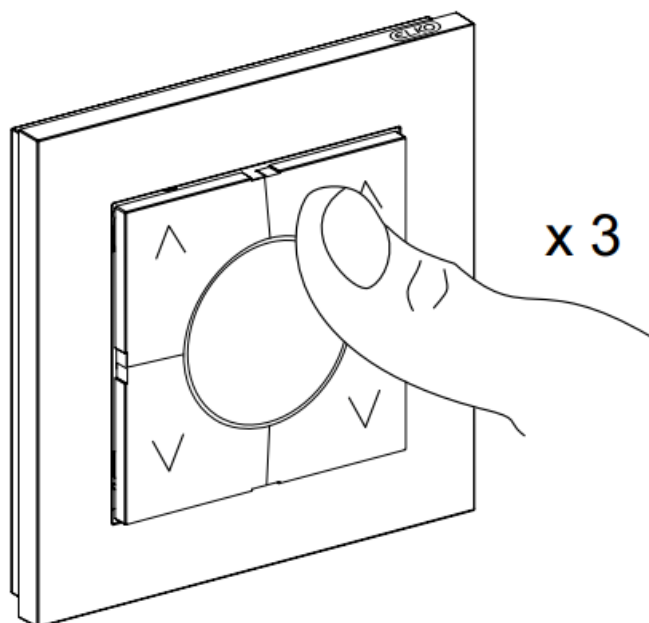
1. Navigate to Wireless switch > Top right key > Moment.
2. Locate the moment you want to edit and tap ●●●.
3. On the Edit page, you can tap each item to change the settings and tap Save.



Unbinding a moment

Unbinding the moment allows you to remove the moment from the assigned keys without deleting the moment.

1. Go to the control panel and tap Top right key.
2. Tap Unbind.
3. Short press the top right push button 3 times on the Wireless switch to activate the device and tap Sure on the app.



Deleting a moment

To delete a moment:

1. Navigate to Wireless switch > Top right key > Moment.
2. Locate the moment that you want to delete and tap ●●●.
3. Tap Delete.

NOTE: Deleting the lighting group will unbind the lighting group from the keys.

Replacing The Battery

Replace the device battery when the level is low or critically low. The battery level can be seen in the app.
To replace the battery from the device:



WARNING

CHEMICAL BURN HAZARD

Keep batteries out of reach of children. If swallowed, seek immediate medical attention.
Failure to follow these instructions can result in death, serious injury, or equipment damage.

NOTICE

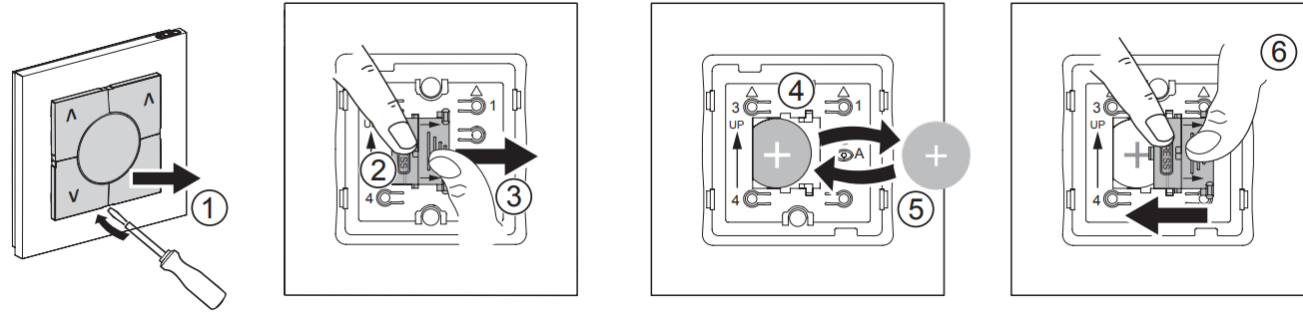
EQUIPMENT DAMAGE

The device is locked on the fixing plate with retaining claws. Never pull the device before sliding it upwards.
Failure to follow these instructions can result in equipment damage.

1. Remove the rockers from the mould.
2. Press and hold the battery cover with your thumb.
3. Slide the battery cover with another thumb to remove.
4. Remove the old battery and press any push button on the device for a few seconds.



NOTE: Dispose the used batteries, as per statutory regulations.

5. Insert the battery with plus (+) symbol facing outward
6. Secure the battery cover.





LED Indications


Pairing the device

User Action	LED Indication	Status
Press the top right push button 3 times	LED blinks orange, once per second. 	Pairing mode is active for 30 seconds. When pairing is completed, LED displays solid green for a few seconds, before turning Off. 

Resetting the device

User Action	LED Indication	Status
Press the top right push button 3 times and hold it down once for > 10 s.	LED blinks red, once per second. 	The device is in reset mode. The device then restarts and the LED starts blinking green, before turning Off. 

Battery level

LED Indication	Status
LED blinks red once, when a push button is pressed. 	The battery is low (< 10%), Replace the battery, page 20.. NOTE: A notification pop-up will appear on the app.

Troubleshooting

Symptom	Possible cause	Solution
LED blinks red.	The Wireless switch battery is low or drained.	Replace the battery, page 20. NOTE: A notification pop-up will appear on the app.
The Wireless switch displays offline in the app.	The Wireless switch battery is low or drained.	Replace the battery, page 20.
	The Wireless switch is disconnected from the network.	Press any push button on the Wireless switch. NOTE: The first press does not trigger Wireless switch operation.

Technical Data

Battery	CR2032
Battery life	Up to 5 years (depending on frequency of use and quality of battery)
IP rating	IP20
Operating frequency	2405-2480 MHz
Max. radio-frequency power transmitted	<10 mW
Operating temperature	-5 °C to 45 °C
Relative humidity	5% to 95%
Communication protocol	Zigbee 3.0

Trademarks


This guide makes reference to system and brand names that are trademarks of their relevant owners.

- Zigbee® is a registered trademark of the Connectivity Standards Alliance.
- Apple® and App Store® are brand names or registered trademarks of Apple Inc.
- Google Play™ Store and Android™ are brand names or registered trademarks of Google Inc.
- Wi-Fi® is a registered trademark of Wi-Fi Alliance®. Other brands and registered trademarks are the property of their respective owners.

Customer Support

ELKO AS
Sandstuveien 68, 0680 Oslo
Pb 6598 Etterstad, 0607 Oslo
Norway
+47 67 79 39 00
support@elko.no
www.elko.no

Documents / Resources

	<p>ELKO Wireless Push Smart Switch [pdf] User Guide</p> <p>Wireless Push Smart Switch, Push Smart Switch, Smart Switch, Switch</p>
---	--

References

-  elko.no - Hjem
- [User Manual](#)

[Manuals+](#), [Privacy Policy](#)

This website is an independent publication and is neither affiliated with nor endorsed by any of the trademark owners. The "Bluetooth®" word mark and logos are registered trademarks owned by Bluetooth SIG, Inc. The "Wi-Fi®" word mark and logos are registered trademarks owned by the Wi-Fi Alliance. Any use of these marks on this website does not imply any affiliation with or endorsement.