



ELKO RF KEY-40 4 Button Controller Instruction Manual

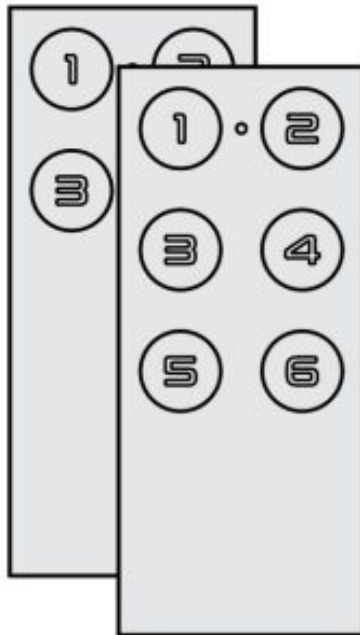
[Home](#) » [ELKO](#) » ELKO RF KEY-40 4 Button Controller Instruction Manual 



Made in Czech Republic

RF KEY – 40/60

4/6 button controller – keychain



INEL
RF Control

Contents

- [1 Characteristics](#)
- [2 Control options](#)
- [3 Radio frequency signal penetration through various construction materials](#)
- [4 Indicators, settings](#)
- [5 Insertion and replacement of a battery](#)
- [6 Technical parameters](#)
- [7 Safe handling](#)
- [8 Warning](#)
- [9 Documents / Resources](#)
- [10 Related Posts](#)

Characteristics

- Key fob-sized remote control, available in black and white.
- When the button is pressed, it sends the set command (ON / OFF, dimming, time on / off, lower / raise).
- RF KEY-40: 4 buttons, each of which allows you to control an unlimited number of components.
- RF KEY-60: 6 buttons, each of which allows you to control an unlimited number of components.
- Replaceable battery (3 V CR 2032) with a service life of approx. 5 years (depending on the frequency of use).

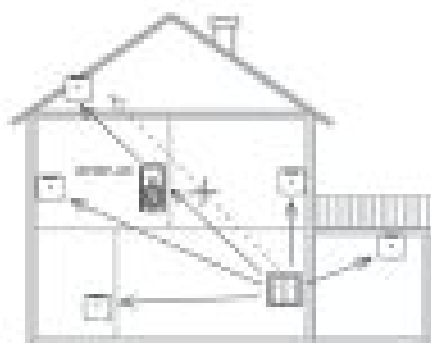
Control options

The RF controllers can control all switching and dimming components of the RF Control system, which are marked with the RFIO and RFIO² communication protocols.

RF controllers can control:

- switches
RFSA-11B, RFSA-61B, RFSA-62B, RFSA-61M, RFSA-66M, RFSAI-61B, RFSAI-62B, RFSC-11, RFSC-61, RFUS-11, RFUS-61, RFJA-12B
- dimmers
RFDA-73/RGB, RFDA-11B, RFDA-71B, RFDEL-71B, RFDEL-71M, RFDSC-11, RFDSC-71, RFDAC-71B
- lighting
RF-RGB-LED-550, RF-White-LED-675

Radio frequency signal penetration through various construction materials



800 - 860 MHz	860 - 960 MHz	960 - 1920 MHz	2400 - 4800 MHz	49 - 100 MHz
wooden structures with plaster boards	common glass	brick walls	reinforced concrete	metal partitions
aluminum laminated glass	laminated glass	concrete walls	reinforced concrete	reinforced concrete

Indicators, settings

After inserting the battery, the red LED lights up continuously for 3 seconds and then for 5 seconds, the selected controller function is indicated by fl ashing LED.

- double fl ash – standard RFIO² operating mode
- rapid fl ashing – mode of compatibility with older actuators

If you do not want to change the function of the controller, you must not press any buttons during this time

To switch between RFIO² mode and compatibility mode:

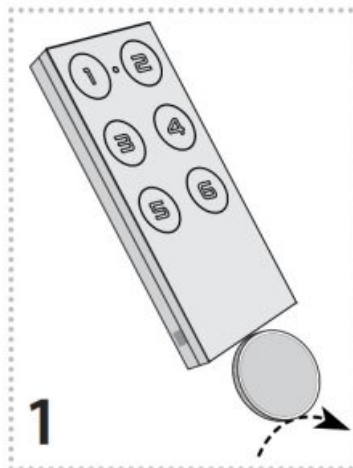
If you need to change the operating mode of the controller, after inserting the battery, when the LED is constantly lit. press buttons 1 and 3 simultaneously and hold until the LED starts to signal the changed mode (double fl ash or rapid fl ash).

Then the buttons must be released. The selected function mode is stored in memory and after replacing the battery, the controller continues to operate in the same mode.

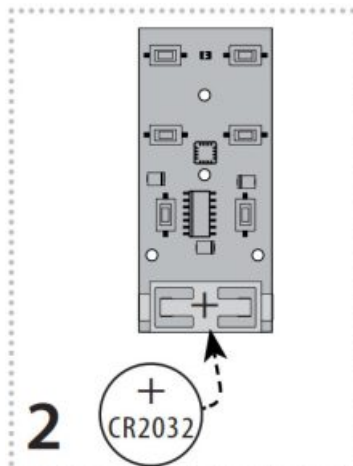
If the controller is used in RFIO² mode, then it is necessary to instruct the controller and link to the actuators switch to learn mode not only the actuator (according to the instructions for the actuator), but also the controller in the following way: Remove the battery from the remote control, press one of the buttons several times to discharge the device, and insert the battery again. When the LED lights up, press button 1 and keep it pressed until the controller starts signaling the learning mode with short fl ashing LEDs. Then release the button and the button now works in RFIO² learning mode. To end the learning mode, remove the battery, press some of the buttons several times. and then replace the battery. Now we press any button and the controller will start again in RFIO² operating mode.

Insertion and replacement of a battery

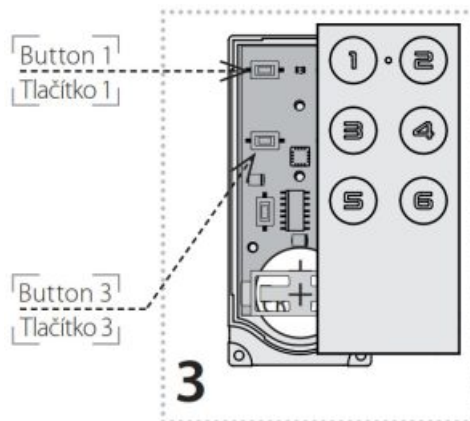
Use a coin to open the key fob and remove the front cover. Carefully tap the device out of the bottom cover.



Slide the CR2032 battery into the battery holder. Observe the polarity.



Insert the device into the bottom cover. Attach the front of the cover and click.



Technical parameters

	RF KEY-40 / RF KEY-60
Supply voltage:	3 V battery / baterie CR 2032
Battery life:	about 5 years depending on the frequency of use
Transmission indication:	LED
Number of buttons:	4 / 6
Communication Protocol :	RFIO
Frequency:	2
Signal transmission method:	866–922 MHz
Range:	one-way addressed message
Other data	in the open up to 200 m
Operating temperature:	-10 až +50 °C
Operating position:	any / libovolná
Colour design:	white, black
Protection:	IP20
Pollution degree:	2
Dimensions:	71 x 31 x 8 mm
Weight:	17 g
Related standards:	EN 60669, EN 300220, EN 301489 R&TTE Directive, Order. No 426/2000 Coll. (Directive 1999/EC)

Attention:

When you instal iNELS RF Control system, you have to keep minimal distance 1 cm between each units. Between the individual commands must be an interval of at least 1s.

Safe handling



When handling a device unboxed it is important to avoid contact with liquids. Never place the device on the conductive pads or objects, avoid unnecessary contact with the components of the device.

Warning

Instruction manual is designated for mounting and also for user of the device. It is always a part of its packing. Installation and connection can be carried out only by a person with adequate professional qualification upon understanding this instruction manual and functions of the device, and while observing all valid regulations. The trouble-free function of the device also depends on transportation, storing and handling. In case you notice any sign of damage, deformation, malfunction or missing part, do not install this device and return it to its seller. It is necessary to treat this product and its parts as electronic waste after its lifetime is terminated. Before starting installation, make sure that all wires, connected parts or terminals are de-energized. While mounting and servicing observe safety regulations, norms, directives and professional, and export regulations for working with electrical devices. Do not touch parts of the device that are energized – life threat. Due to transmissivity of RF signal, observe correct location of RF components in a building where the installation is taking place. RF Control is designated only for mounting in interiors. Devices are not designated for installation into exteriors and humid spaces. The must not be installed into metal switchboards and into plastic switchboards with metal door – transmissivity of RF signal is then impossible. RF Control is not recommended for pulleys etc. – radiofrequency signal can be shielded by an obstruction, interfered, battery of the transceiver can get fl at etc. and thus disable remote control.

ELKO EP declares that the RF KEY type of radio equipment complies with Directive 2014/53 / EU.

The full EU Declaration of Conformity is available at:

www.elkoep.com/4-channel-controller—keychain-white

Tel.: +420 573 514 211, e-mail: elko@elkoep.com, www.elkoep.com



ELKO EP, s.r.o. e-mail: elko@elkoep.cz

Support: +420 778 427 366

www.elkoep.com



Documents / Resources



[ELKO RF KEY-40 4 Button Controller](#) [pdf] Instruction Manual

RF KEY-40, RF KEY-60, 4 Button Controller, 6 Button Controller