



ELKO EKO50065 One Key Card Switch Instruction Manual

[Home](#) » [ELKO](#) » ELKO EKO50065 One Key Card Switch Instruction Manual 

ELKO EKO50065 One Key Card Switch Instruction Manual



Contents

- [1 Necessary accessories](#)
- [2 Assembly Instruction](#)
- [3 Wiring Instruction](#)
- [4 Installation Instruction](#)
- [5 Documents / Resources](#)
 - [5.1 References](#)
- [6 Related Posts](#)

Necessary accessories

To be completed with:

- Frame in corresponding design and colour

DANGER

HAZARD OF ELECTRIC SHOCK, EXPLOSION, OR ARC FLASH

Safe electrical installation must be carried out only by skilled professionals. Skilled professionals must prove profound knowledge in the following areas:

- Connecting to installation networks.
- Connecting several electrical devices.
- Laying electric cables.
- Safety standards, local wiring rules and regulations.

Failure to follow these instructions will result in death or serious injury

ELKO One key card switches can be operated with a key card. The switch can be used as a main switch, a signal sender or as both.

Usage areas: hotel rooms, ships cabins, hospitals, institutions, offices etc.

The switch has a built-in light source.

Note: If one connection is 230V, then all connections must be considered as live 230V connections.

Technical facts for:

Switch: AC 230V, 50Hz, 10A

Built-in light source: LED AC 230V, 0.3mA



■ Dispose of the device separately from household waste at an official collection point. Professional recycling protects people and the environment against potential negative effects.

ELKO AS

Sandstone 68, 0680 Oslo

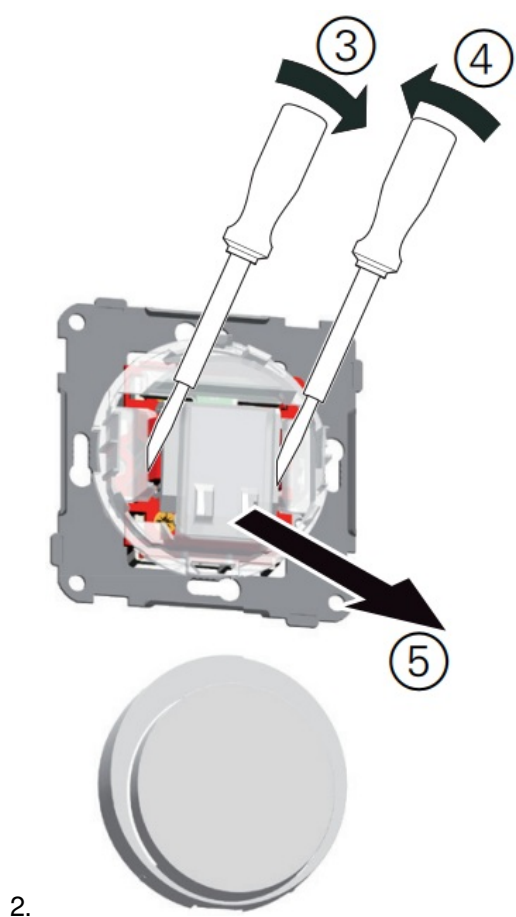
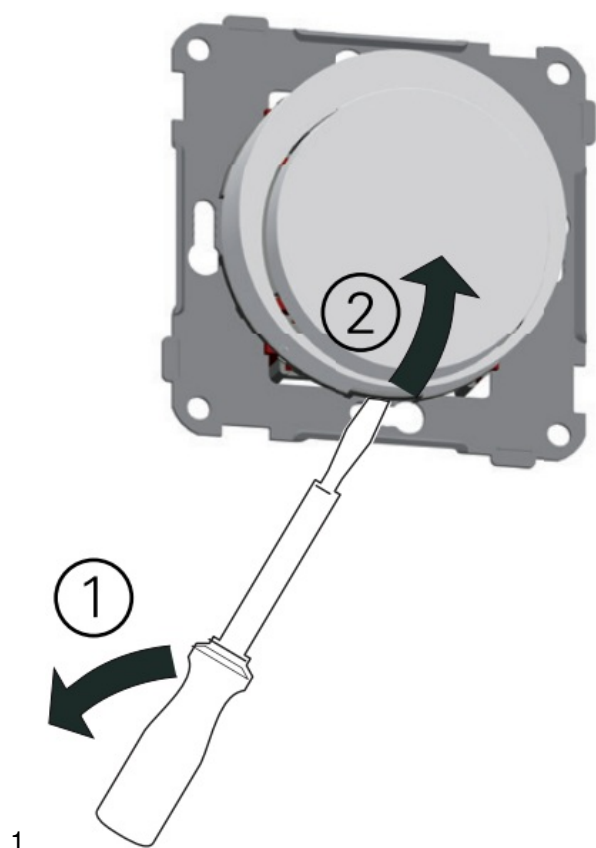
Pb 6598 Letterhead, 0607 Oslo

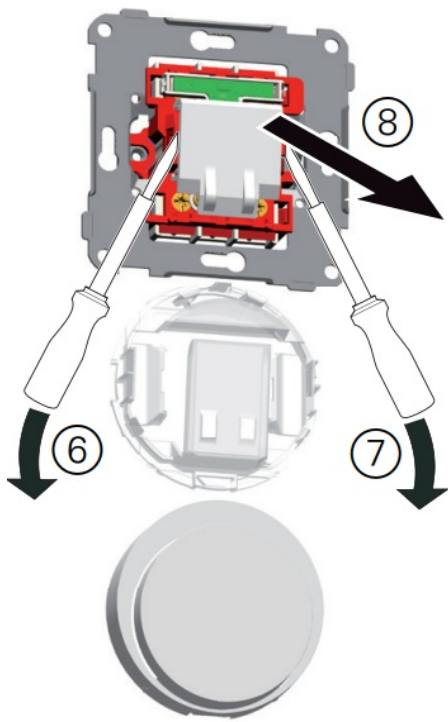
Commercial registration number: 911 382 563 + 47 67 79 39 00

support@elko.no

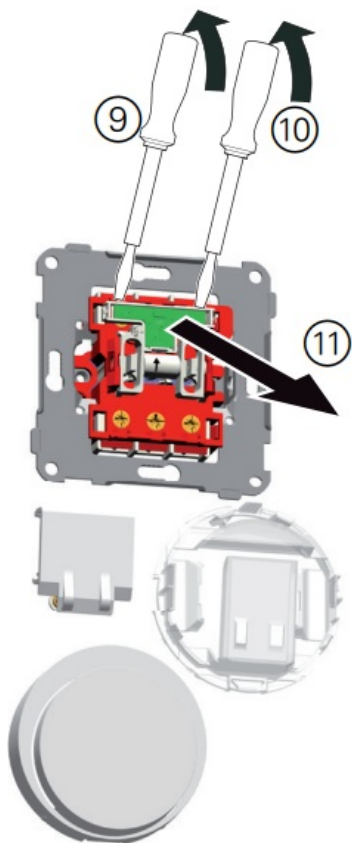
www.elko.no

Assembly Instruction

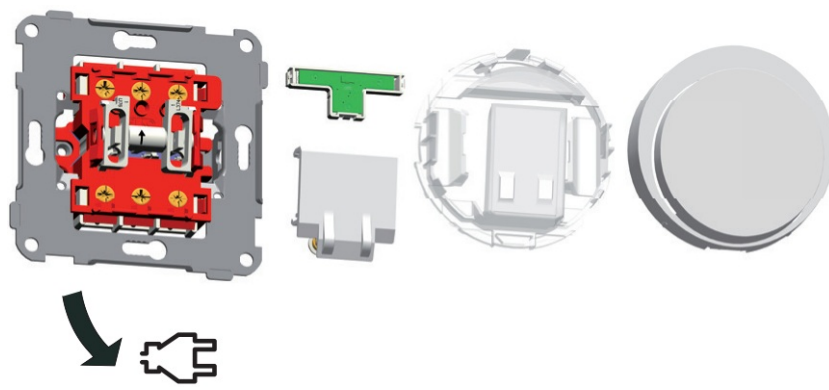




3.



4.

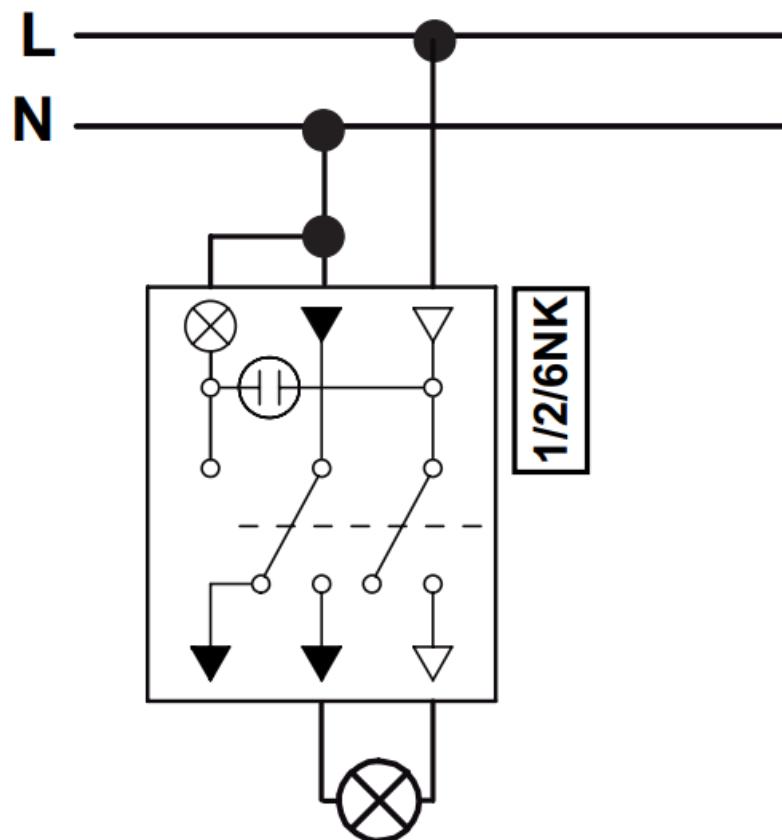


5.

Wiring Instruction

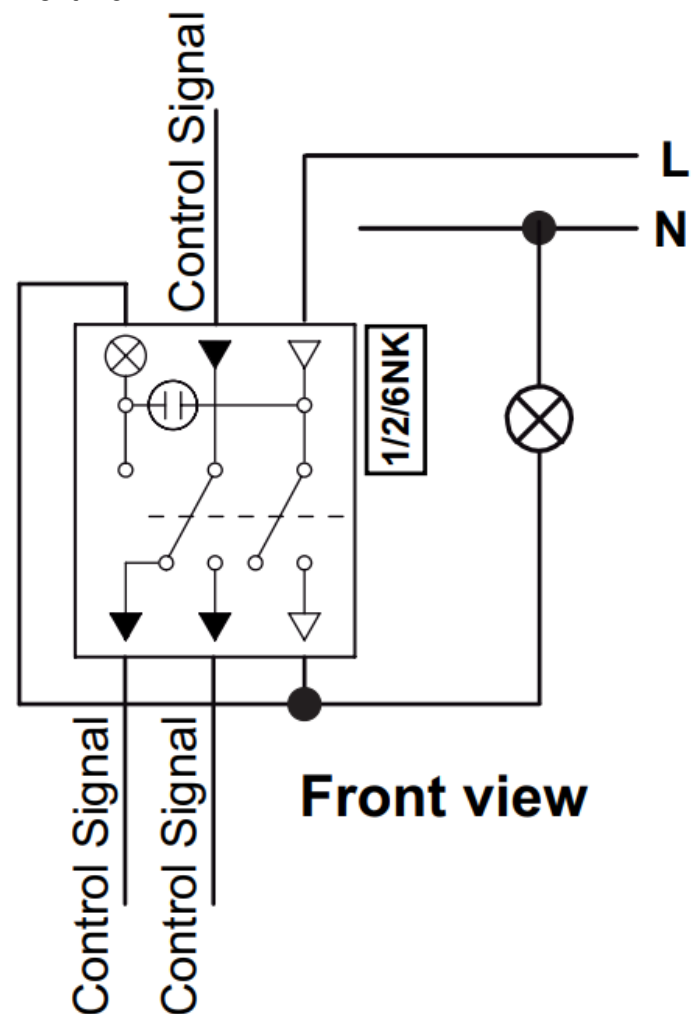
2-pole. Switch light with or without card.

Front view



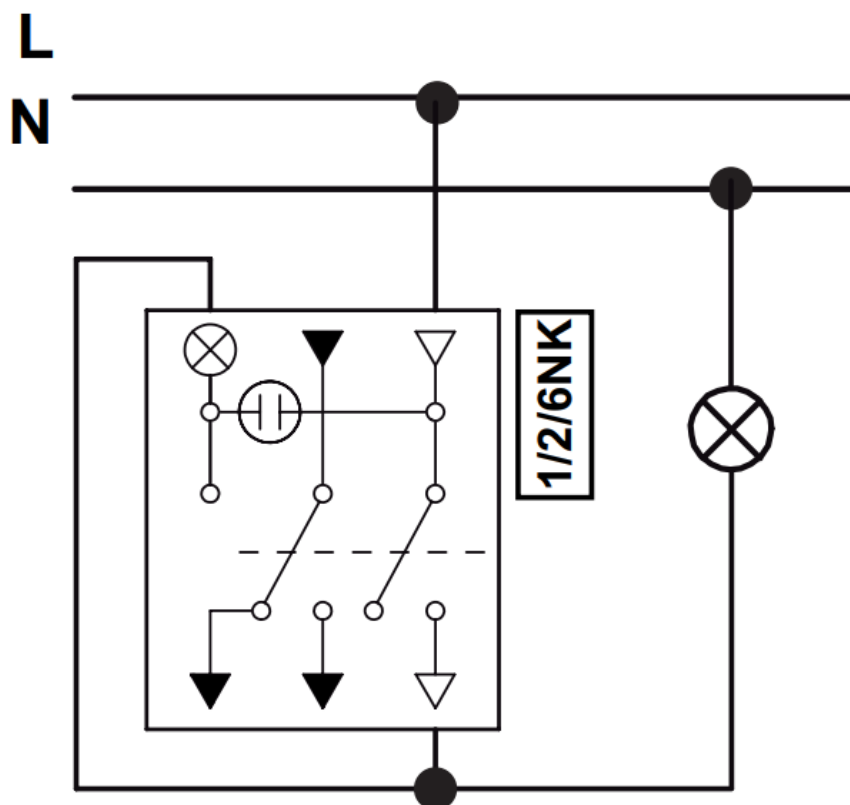
1-pole. Switch light with or without card. Separate reverse for Control signal

Front view



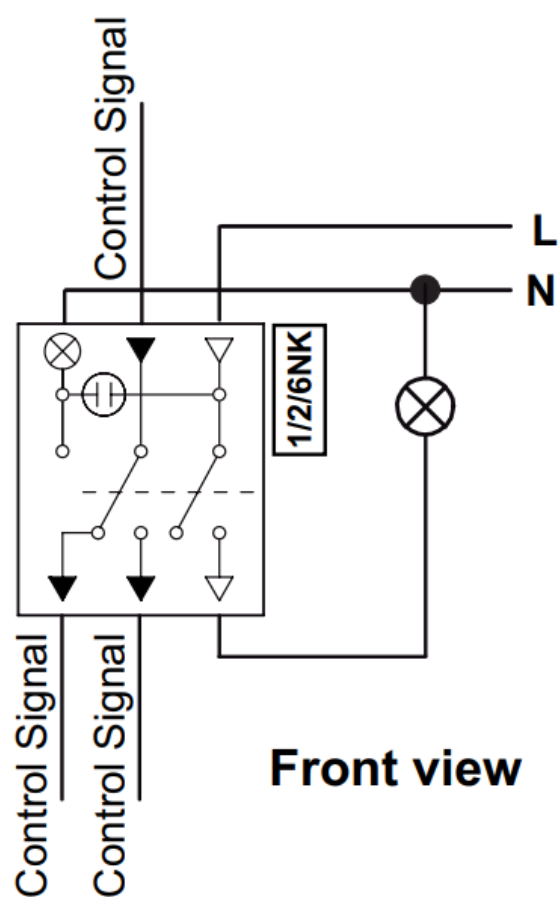
1-pole. Switch light when card is extracted.

Front view



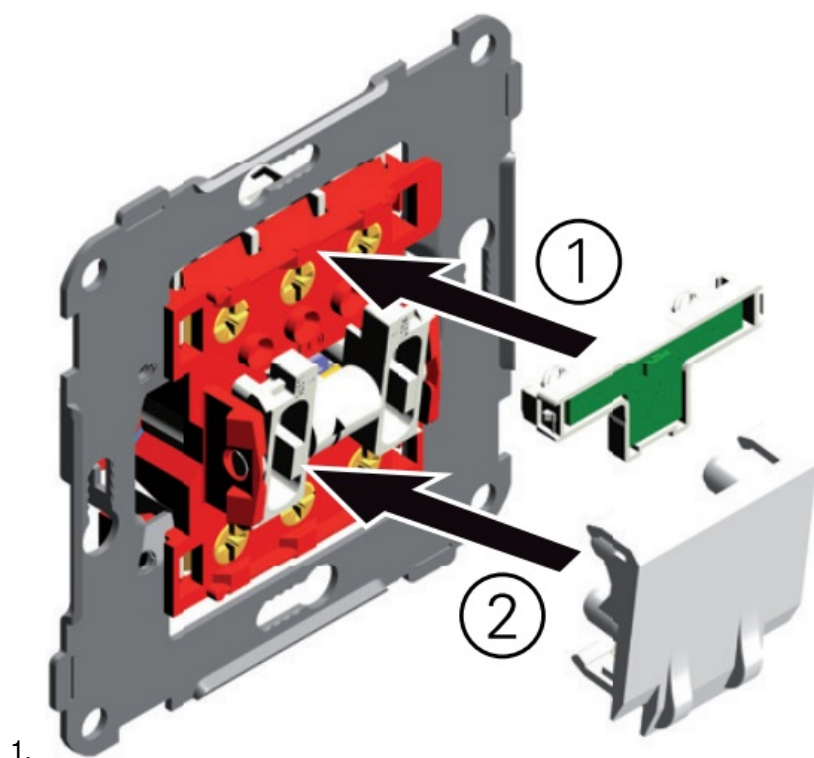
1-pole. Switch light when card is extracted. Separate reverse for Control signal.

Front view

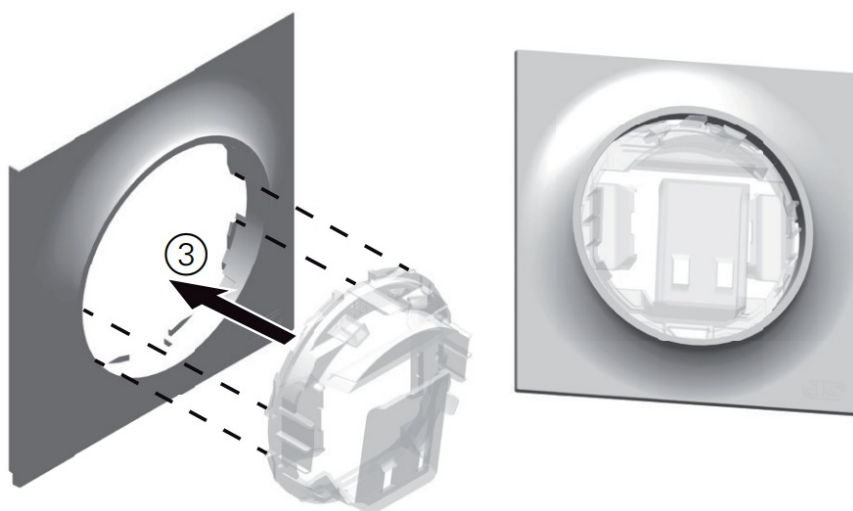


Front view

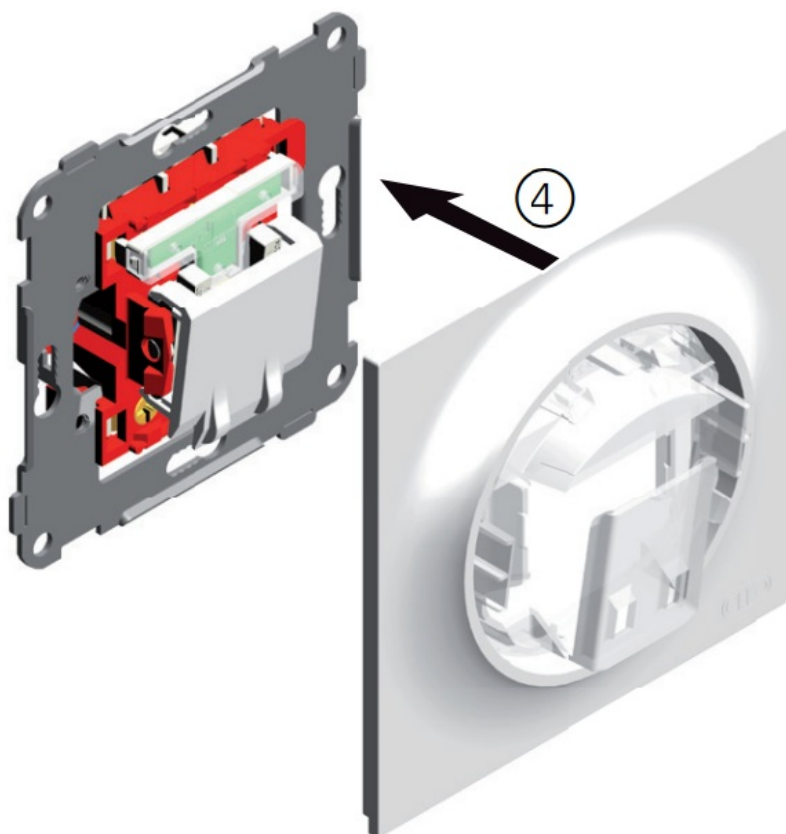
Installation Instruction



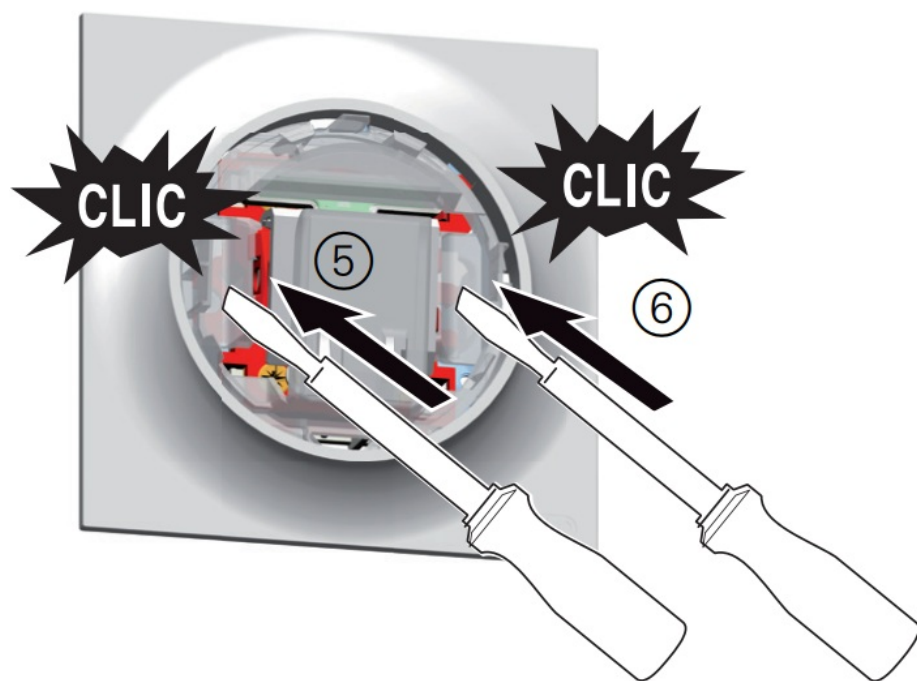
1.



2.



3.



4.



5.



Documents / Resources

	ELKO EKO50065 One Key Card Switch [pdf] Instruction Manual EKO50065 One Key Card Switch, EKO50065, One Key Card Switch, Key Card Switch, Card Switch, Switch
--	---

References

- [elko.fi](https://www.elko.fi)
- [elko.no](https://www.elko.no) - Hjem
- [elko.se](https://www.elko.se) - Hem
- [User Manual](#)

[Manuals+](#), [Privacy Policy](#)

This website is an independent publication and is neither affiliated with nor endorsed by any of the trademark owners. The "Bluetooth®" word mark and logos are registered trademarks owned by Bluetooth SIG, Inc. The "Wi-Fi®" word mark and logos are registered trademarks owned by the Wi-Fi Alliance. Any use of these marks on this website does not imply any affiliation with or endorsement.