

## EliteControl Infinity Series Wireless Door/Window Contact and Input Instructions

[Home](#) » [EliteControl](#) » EliteControl Infinity Series Wireless Door/Window Contact and Input Instructions 



**infinity input**  
**Wireless Door/Window Contact & Input**

## Contents

[1 Specifications](#)

[2 Overview](#)

[3 Mounting  
Requirements](#)

[4 Hardware Mounting](#)

[5 Detection Method  
Setup](#)

[6 Default Programming](#)

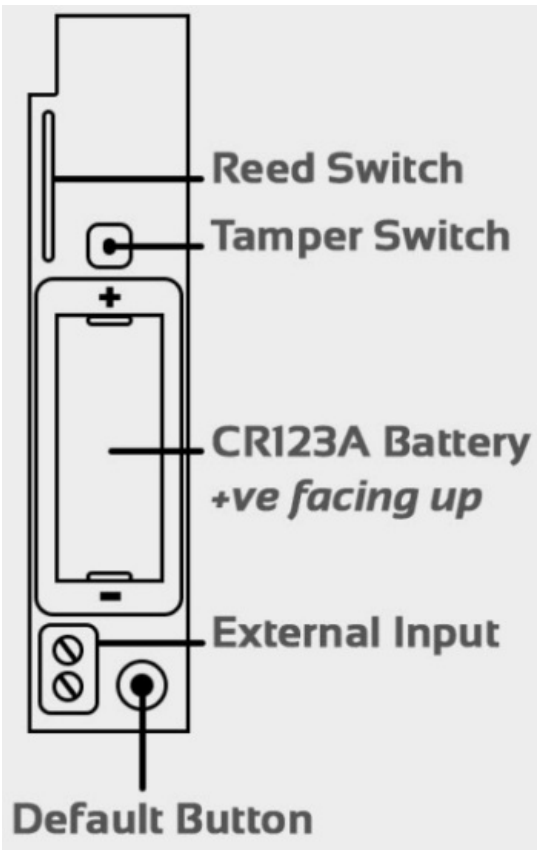
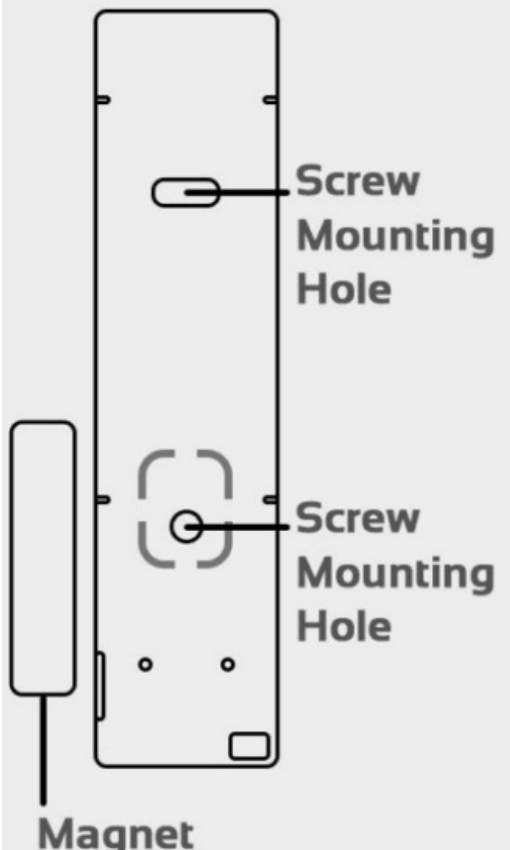
[7 Documents / Resources](#)

[8 Related Posts](#)

## Specifications

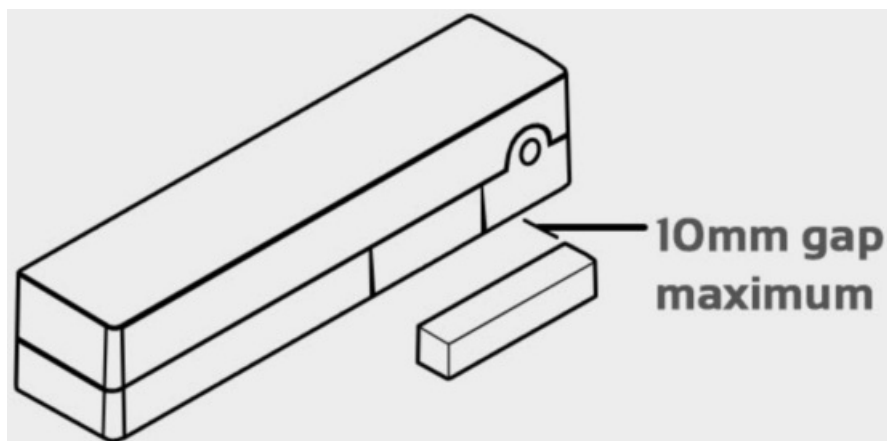
Detection Method	Magnet or External Input
Wireless Range	Up to 500m Line of Sight
Frequency	915MHz
Modulation Type	GFSK
Supervision	7 Minutes
Protocol	infinity 2 Way Encrypted
LED Indicator	Low Battery & Default
Tamper Switch	Front Cover Er Bath Tamper
Battery Type	1 x CR123A Lithium
Battery Life	Up to 5 Years
Operating Temperature	-200°C to 500°C
Environment Humidity	85% max
Dimensions	97mm x 22mm x 21mm
Weight incl Battery	40g
Event Transmission	Alarm, Tamper, Low Battery & Supervision

## Overview

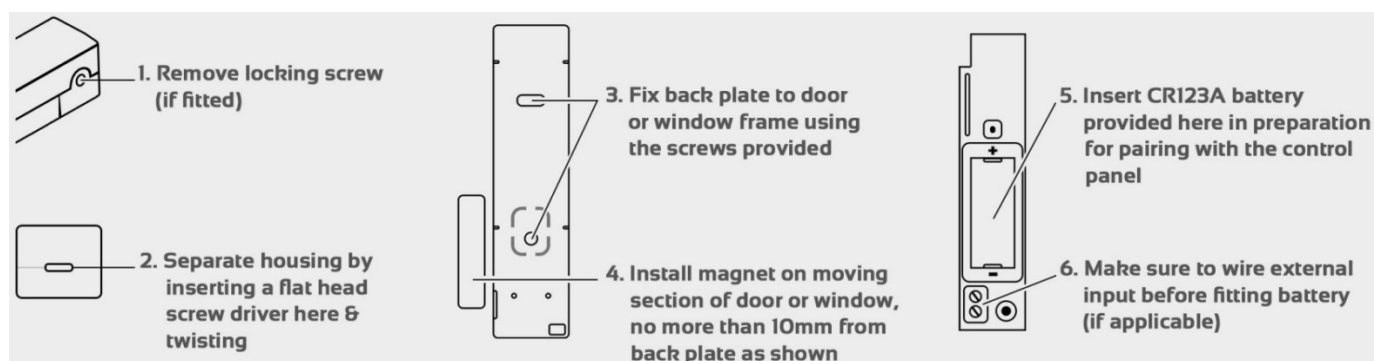
Circuit Board	Back Plate
 <p>Reed Switch</p> <p>Tamper Switch</p> <p>CR123A Battery <i>+ve facing up</i></p> <p>External Input</p> <p>Default Button</p>	 <p>Screw Mounting Hole</p> <p>Screw Mounting Hole</p> <p>Magnet</p>

## Mounting Requirements

- Attach the transmitter to the door/window frame and the magnet to the moving section of the door or window
- Avoid installing in close proximity to metal materials (aluminum excluded) as this can negatively affect the transmission range & reed switch operation
- Only use the screws provided (and do not overtighten) as larger screws could damage the circuit board and also prevent the tamper switch from working correctly
- Mount the device vertically on a flat surface to allow a maximum range
- Do not install the device onto or next to Ferromagnetic materials



## Hardware Mounting



## Detection Method Setup

This device will automatically configure the detection method during power-up

- If the external input is open during power up the device will operate in 'Magnetic Mode'
- If the external input is sealed/closed during power up the device will operate in 'External Input Mode'

Magnetic mode	External

**Learning Procedure (make sure you are in installer programming before proceeding. Default P000000E)**

### Enable Wireless Input (P122E)

Press PROG 122 ENTER then the input number you wish to make wireless, followed by entering. Next, make sure options 19 and 5 are on. This makes the input active & wireless, then press ENTER to save

Example:

P 122 E 9 E turn 1 & 5 on E

Option 1 = Input is active    Option 5 = Input is wireless

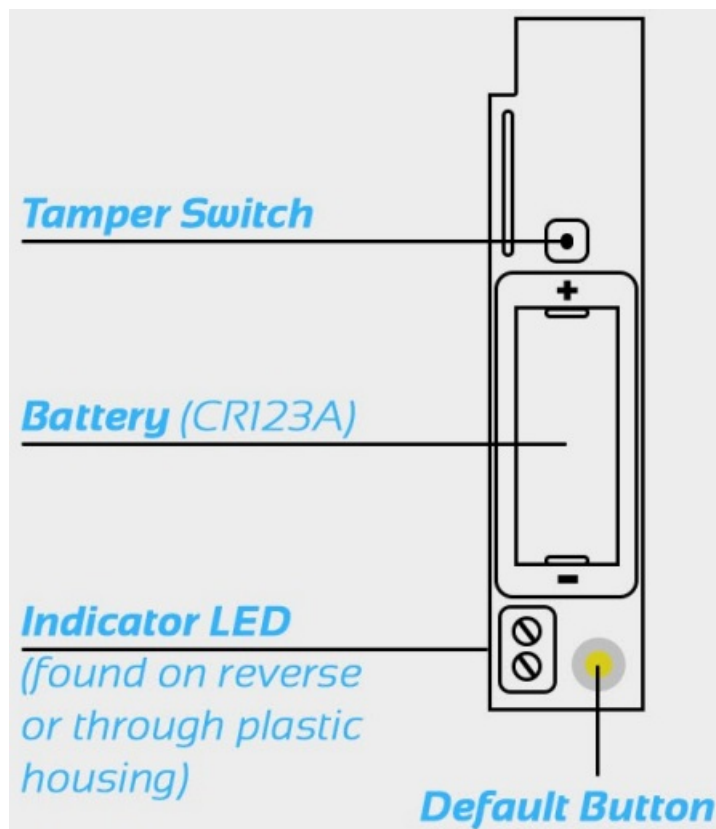
Input you are working on

Programming Address

**Learn Device into an Input (P164E)** (ensure battery is correctly installed in the device before proceeding)

- Press PROG 164 ENTER then the input number you wish to enroll the device into, followed by entering
- Press ENTER again to start the learn beeps, indicating that the system is waiting to learn a device
- Activate the device tamper switch to complete the learning process and the head should stop beeping
- The keypad will now display the input number you learned from the device.
- Repeat the steps above using a different input (that is not in use) to learn another device or exit programming to test

## Battery Status Indication



During normal operation, the LED indicator will display **green** if the battery level is OK. The same LED indicator will display as **red** if the battery requires replacement. Battery low will be indicated at 2.2V 6 under.

## Default Programming

If the 'infinity input' has previously been learned into a system it may require defaulting. To do so, press and hold the gold 'Default' button while inserting the battery 6 continue to hold.

The LED will display **solid red** and **turn green** when the default is successful

Note: If system defaults have changed you may need to reference the control panel manual for more information



## Documents / Resources

	<p><a href="#">EliteControl Infinity Series Wireless Door/Window Contact and Input</a> [pdf] Instructions          Infinity Series, Wireless Door Window Contact and Input, Infinity Series Wireless Door Window Contact and Input</p>
--	--