



ELING 106-00305-01 Multi Functional Gauge with LCD Hour Meter Owner's Manual

[Home](#) » [ELING](#) » ELING 106-00305-01 Multi Functional Gauge with LCD Hour Meter Owner's Manual 

Contents

- [1 ELING 106-00305-01 Multi Functional Gauge with LCD Hour Meter](#)
- [2 Product Information](#)
- [3 Product Usage Instructions](#)
- [4 FAQ](#)
- [5 Specification](#)
- [6 PRODUCT OVERVIEW](#)
- [7 GPS installation instructions](#)
- [8 Multifunction Instruction](#)
- [9 Wires Connecting](#)
- [10 GPS Speedometer](#)
- [11 Operation](#)
- [12 Parameter Group](#)
- [13 Documents / Resources](#)
 - [13.1 References](#)

ELING

ELING 106-00305-01 Multi Functional Gauge with LCD Hour Meter



Product Information

Specifications

- Operating Voltage: 9~32VDC
- Operating Current: 150mA
- Operating Temperature: -30~+75°C
- Storage Temperature: -40~+85°C

Product Usage Instructions

Installation

Before installation, follow these steps:

1. Open a hole in the panel with a diameter of 85~87mm.
2. Ensure there is a space of 70mm behind the panel.

GPS Installation

For GPS installation:

- GPS should be installed in front or in reverse based on the requirements.
- Avoid using materials that can shield GPS signals.

Multifunction Usage

For multifunction usage:

- Range of tachometer: 0~9999 RPM
- Range of speed: 0~999 km/h, MPH, Knots
- Range of water temperature: 40~120°C (104~248°F)
- Range of fuel: 0-100%

FAQ

Common Issues and Solutions

Error Codes:

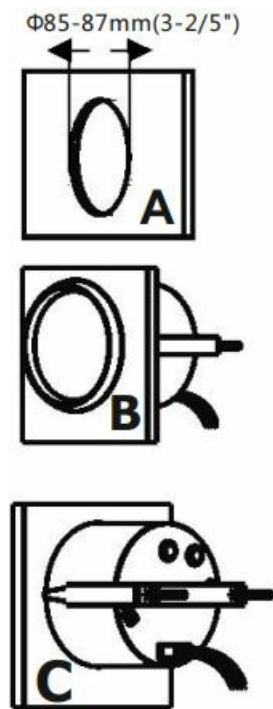
- **E01:** GPS signal not found.
- **E02:** GPS signal lost midway.
- **E03:** Device malfunction.

Operation Tips:

- To enter setting mode, hold the button for 3 seconds.
- To switch the speed unit, quick press the MODE button.
- Trip mileage will be reset when the power is off by default.

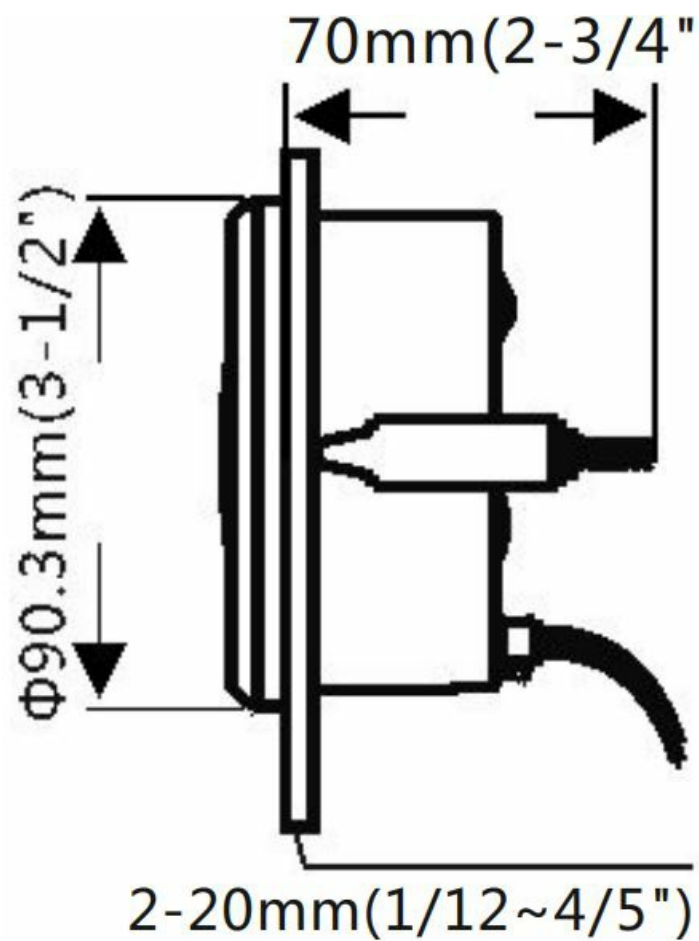
OWNER'S MANUAL

- Pic A Before installation , firstly ,to open a hole (Dia:85~87mm) of the panel, make sure there is a space with (70mm backyard of panel) as well
- PicB: Put the gauge in the hole
- Pic C: Using M4 nut and C type bracket to seal up the gauge



Specification

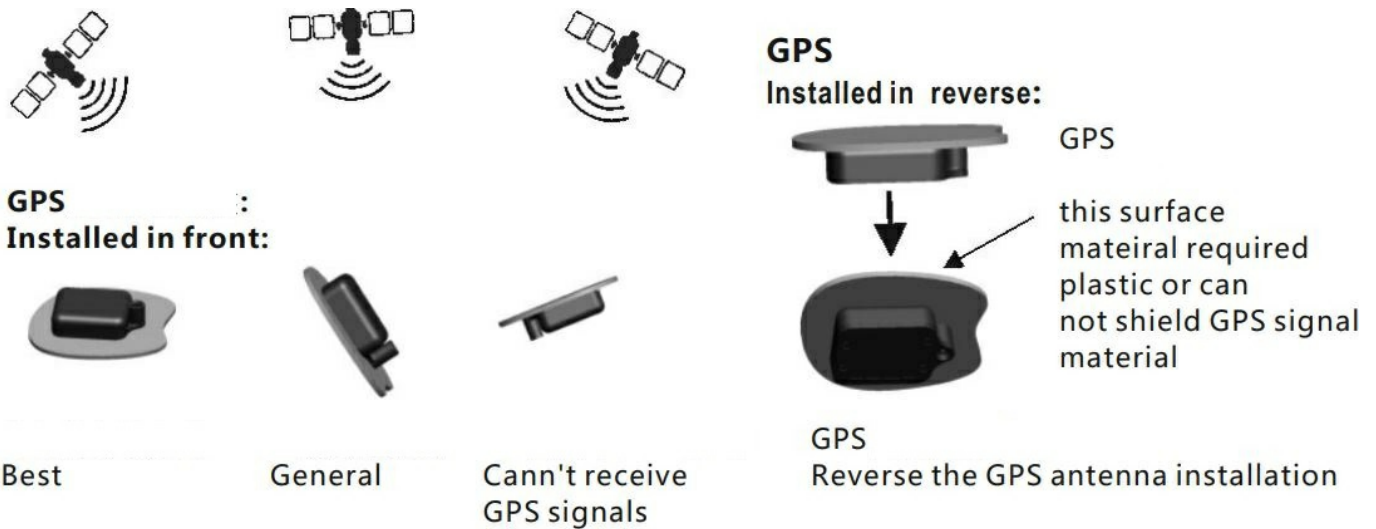
- **Operating Voltage** 9~32VDC
- **Operating current** $\leq 150\text{mA}$;
- **Operating temperature** $-30\sim+75^{\circ}\text{C}$
- **Storage temperature** $-40\sim+85^{\circ}\text{C}$



PRODUCT OVERVIEW



GPS installation instructions



Multifunction Instruction

1. Range of tacho: 0~9999 RPM
2. Range of speed: 0~999 km/h MPH, Knots
3. Range of water temp : 40~120°C (104~248°F)
4. Range of fuel: 0-100%
5. Range of pressure 0~5bar 0~10bar 0-100Psi/0-150Psi
6. Range of ODO 0~99999.9 km miles knots
7. Range of hours 0~99999.9 hours
8. Range of trip 0~999.9 km/h MPH, Knots
9. Range of Volt: 8-32V

Speed ratio :

1. Range of speed ratio:1.0-300.0;
2. If your transmitter is installed on the flywheel,come from w point signal, the ratio value is equal to half electrodeplate (Poles/2). If it is the gasoline engine, the speed ratio is equal to the number of cylinders (cylinder/2)

Typ tting reference:

Outboard	
poles	speed ratio
4	2
6	3
8	4
10	5
12	6

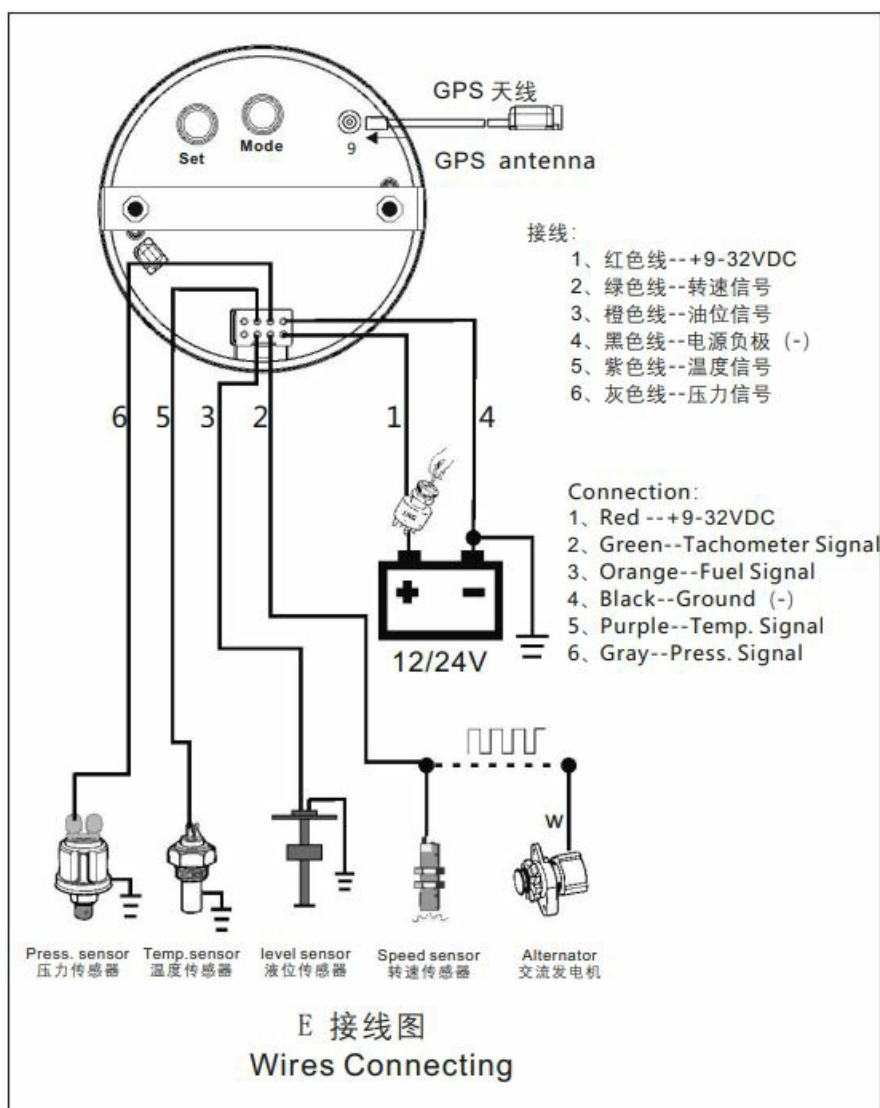
Intboard or Gas engine		
cylinder	cycle	speed ratio
4	4	2
	4	3
8	4	4
10	4	5
12	4	6

Diesel engine	
Gear number	speed ratio
$\text{speedratio} = \text{Gearnumber}$	

H-096.0

The set speed ratio=96

Wires Connecting



GPS Speedometer

1. Power on, to finish the connection as in picture E
Firstly, the GPS speedometer will start searching GPS signal input, within 0 to 300 seconds counting.If the

device cannot find any GPS signal within 300 seconds, there will be an error code “E01” indicating. If the device loses its GPS signal input, then it will restart to search again, if it cannot find any GPS signal input in the following 300 seconds, there will be an error code “E02” indicating. But, generally, the device will read GPS signal input and then be ready for work.

2. The speed unit(MPH(default)→Km/h → Knots) could be switched by quick pressing the MODE button, then recorded.

TRIP: Subtotal mileage, data will be reset when power off as default ODO: Total mileage, data will be recorded when power off

3. Error Code

E01 : The GPS signal could not be found E02 : The GPS signal was lost midway. E03 : Malfunction of the device

Operation

1. Button.

- a. Firstly, hold the button (≥ 3 seconds) to entry setting mode, Hourmeter parts: Y-XXX.X digital Y,)to quick press(≤ 2 seconds) the Set button to have the digital Y indicating from 0~14 cycle
- b. At this time, user holds the Mode button again, the digital XXX.X will increase; If user releases then hold the Mode button again, the digital XXX.X will decrease repeatedly.
- c. Please refer to the below parameter group, and set all the features/value /functions required, all data will be recorded will be recorded if you release both Mode and Set buttons (≥ 3 seconds)
- d.Quick press the Mode button to switch the speed unit MPH(default) →Km/h→Knots

Example

Value 2-0001– Water temperature gauge

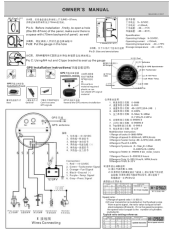
Value 1-096.0– Speed ratio was set as 96.0

Parameter Group

Parameter Group				
	Value		Technical Data/Feature	Remarks
	Y	-XXX.X		
Tachometer	1	-001.0~300.0	1.0-300.0	Speed ratio range
Water temperature gauge	2	-0000	291.5~22.4 Ω	Default
	2	-0001	301-23 Ω	
	2	-0002~0009	Reserved	
Oil pressure gauge	3	-0000	10-184 Ω	Default(5bar)
	3	-0001	10-184 Ω	Indicating0-10Bar
	3	-0002	240-33 Ω	Indicating0-100PSI
	3	-0003	240-33 Ω	Indicating0-150PSI
	3	-0004~0009	Reserved	
Fuel level gauge	4	-0000	0-190 Ω	Reserved
	4	-0001	0-180 Ω	
	4	-0002	10-180 Ω	
	4	-0003	240-33 Ω	
	4	-0004	240-30 Ω	
	4	-0005~0009	Reserved	
Voltmeter	5	-0000	8-32V	Device could identify the 12V/24V system automatically
Trip	6	-0000	Data will NOT be recorded	Reserved
	6	-0001	Data will be recorded	
	7		Reserved	
Reset	8	-0000~0008	Reserved	
	8	-0009	ODO reset	
	8	-0010	Total hours reset	
	9		Reserved	
	10		Reserved	
Temperature alarm setting	11	-040~-250	The icon will be flickering when the temperature \geq appointed value	Setting from 40~120 °C or 40-250°F
Oil pressure alarm setting	12	-000~-100	The icon will be flickering when the oil pressure \leq appointed value	Setting from 0~10bar or 0-100psi
NOTE: Both unit of alarm value and indication should be synchronous				
Fuel level alarm setting	13	-000~-100	The icon will be flickering when the fuel level \leq appointed value	Setting from 0~100%
Temperature unit switch	14	-000	Celsius equals(°C)	
	14	-001	Fahrenheit equals(°F)	

NOTE:

1. The icon will be flickering when the alarm was triggered
2. For volmeter: a, 12V system — the icon will be flickering when the input voltage \leq 11.3 V b, 24V system — the icon will be flickering when the input voltage \leq 22.6 V
3. The device could identify its input power is 12V or 24 V automatically



[ELING 106-00305-01 Multi Functional Gauge with LCD Hour Meter](#) [pdf] Owner's Manual
106-00305-01 Multi Functional Gauge with LCD Hour Meter, 106-00305-01, Multi Functional Gauge with LCD Hour Meter, Functional Gauge with LCD Hour Meter, Gauge with LCD Hour Meter, LCD Hour Meter

References

- [User Manual](#)

Manuals+, Privacy Policy

This website is an independent publication and is neither affiliated with nor endorsed by any of the trademark owners. The "Bluetooth®" word mark and logos are registered trademarks owned by Bluetooth SIG, Inc. The "Wi-Fi®" word mark and logos are registered trademarks owned by the Wi-Fi Alliance. Any use of these marks on this website does not imply any affiliation with or endorsement.