



ELIKA 460 Wireless Telephone & Access Control System User Guide

[Home](#) » [ELIKA](#) » [ELIKA 460 Wireless Telephone & Access Control System User Guide](#) 

Contents

- [1 ELIKA 460 Wireless Telephone & Access Control System](#)
- [2 CAREFULLY UNPACK & CHECK THE CONNECTIONS](#)
- [3 ROUTE THE POWER AND CONTROL WIRES](#)
- [4 CONNECT YOUR ACCESSORIES](#)
- [5 CONNECT YOUR POWER SUPPLY](#)
 - [5.1 APPLICATION SETUP](#)
- [6 Documents / Resources](#)
 - [6.1 References](#)
- [7 Related Posts](#)

ELIKA

ELIKA 460 Wireless Telephone & Access Control System



QUICK SETUP GUIDE:

IMPORTANT: It is recommended to BENCH TEST this unit by performing the Quick setup procedures below, adding a new user(s), and testing communications. In this manner, if there are any communication concerns experienced after the installation, troubleshooting efforts can be focused on environmental variables.

CAREFULLY UNPACK & CHECK THE CONNECTIONS



- FOR TECH SUPPORT CALL: (949) 208-3600
- WWW.ELIKAACCESS.COM

IMPORTANT

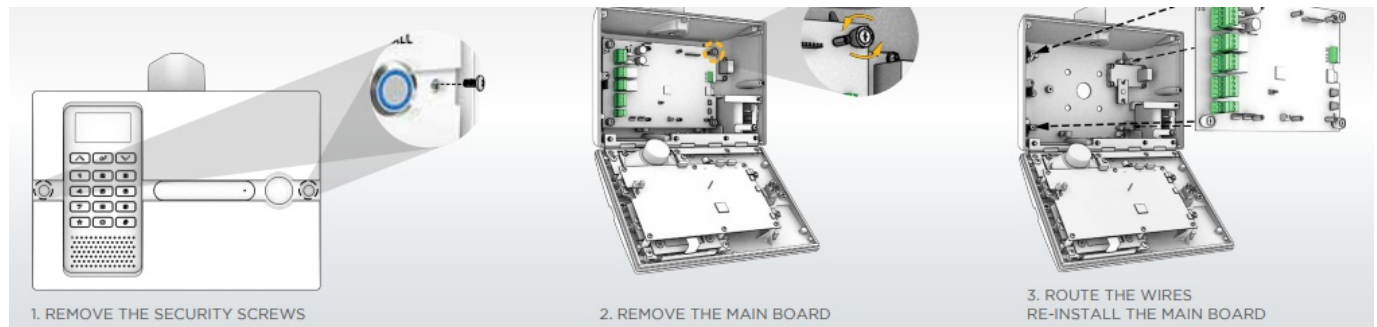
STANDARD GOOSENECK PEDESTAL INSTALLATION IS RECOMMENDED. IF ALTERNATE MOUNTING IS REQUIRED, ALLOW SPACE FOR THE ANTENNA. WITHOUT PROPER SPACING, THE SIGNAL MAY BE

INTERRUPTED

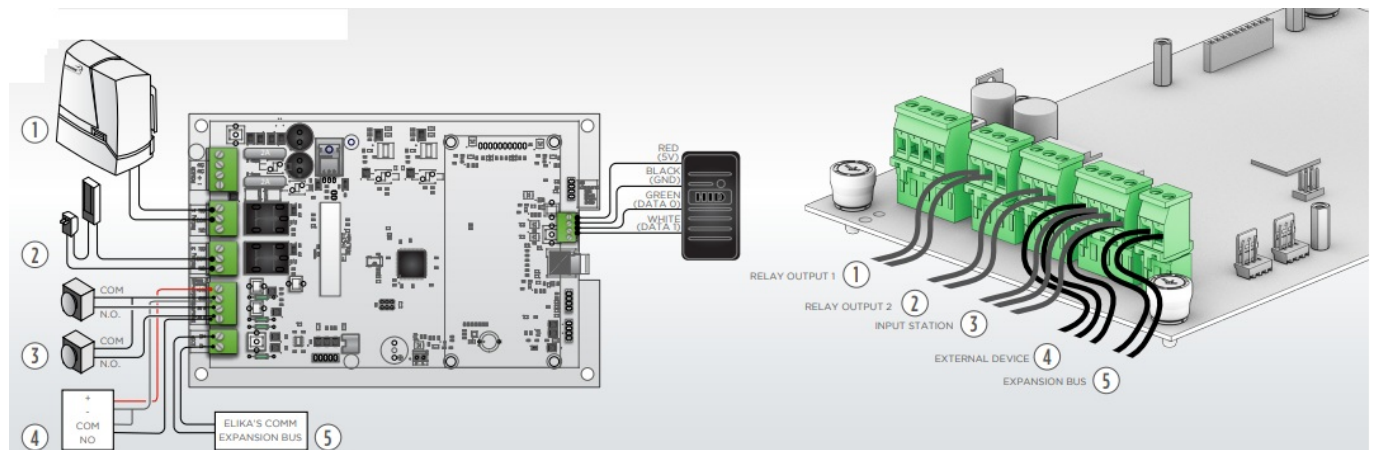
IMPORTANT: ELIKA 460 REQUIRES ACTIVATION BEFORE USE. SEE THE ACTIVATION CARD FOLLOW THE PROMPTED INSTRUCTIONS AT: www.elikacloud.com

WARNING: AUTOMATIC GATES CAN CAUSE SERIOUS INJURY OR DEATH! THE GATE PATH MUST BE CLEAR BEFORE OPERATING! SAFETY DEVICES SHOULD BE INSTALLED TO ENSURE PROPER USE.

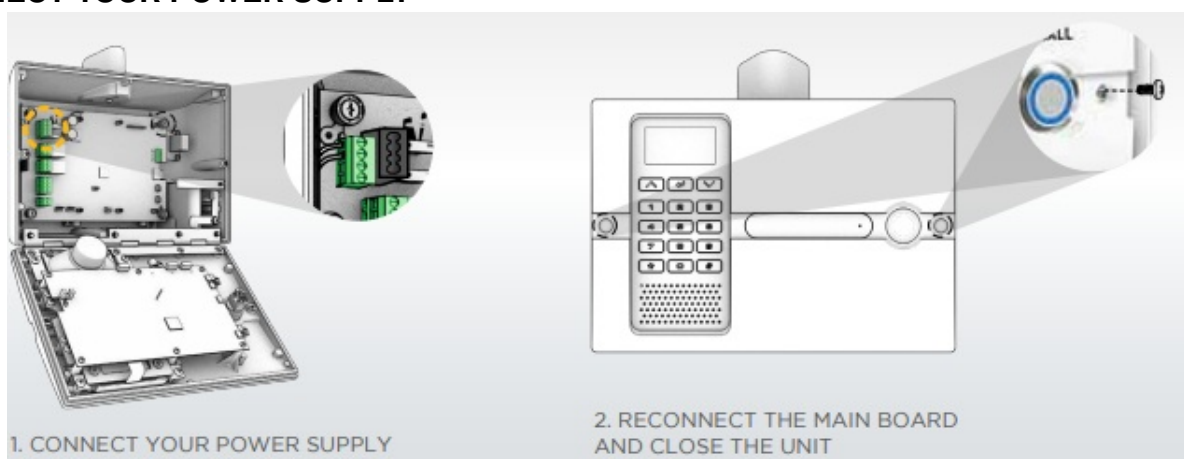
ROUTE THE POWER AND CONTROL WIRES



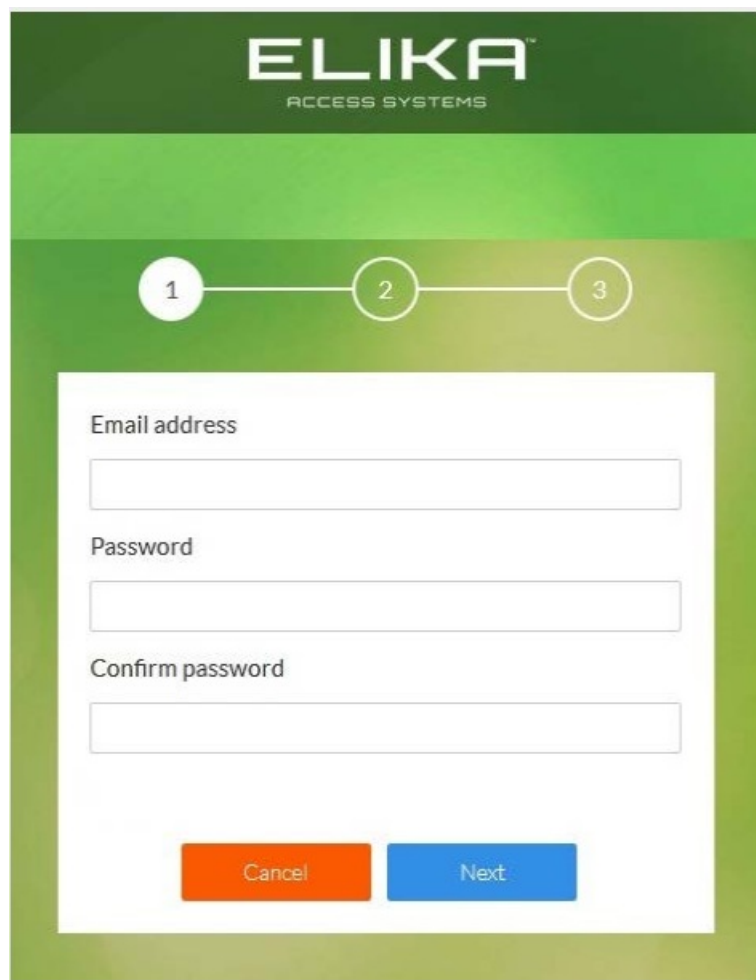
CONNECT YOUR ACCESSORIES



CONNECT YOUR POWER SUPPLY



APPLICATION SETUP

The image shows a registration screen for Elika Access Systems. At the top, the logo "ELIKA" is displayed in white on a dark green background, with "ACCESS SYSTEMS" in smaller white text below it. Below the logo is a light green horizontal bar. Underneath this bar is a progress indicator consisting of three circles numbered 1, 2, and 3, connected by a line. Circle 1 is highlighted. Below the progress indicator is a white registration form. The form contains three input fields: "Email address", "Password", and "Confirm password". At the bottom of the form are two buttons: an orange "Cancel" button and a blue "Next" button.

1. REGISTER DEVICE AT: www.elikacloud.com
 - a. FOLLOW ONLINE PROMPT
2. INPUT CODES:
 - a. SERIAL NUMBER
 - b. REGISTRATION CODE
 - c. FOLLOW ONLINE PROMPT
 - d. ACTIVATE AND PICK PLAN FOR MORE INFORMATION REFER TO THE MANUAL

IMPORTANT

ENSURE THAT ALL COMPONENTS ARE PROPERLY CONNECTED AND MOUNTED TO THE UNIT. FOR ADDITIONAL INFORMATION REGARDING INSTALLATION REFER TO THE MANUAL.

STOP

CONFIRM THAT THE UNIT HAS THE PROPER POWER BEFORE TRYING TO OPERATE IT. FOR ADDITIONAL INFORMATION ON POWER OPTIONS REFER TO THE INSTALLATION MANUAL.

- TECHNICAL SUPPORT 1.949.208.3600 ELIKA TECHNICAL SUPPORT 1.949.208.3600

Documents / Resources



[ELIKA 460 Wireless Telephone & Access Control System](#) [pdf] User Guide
460, Wireless Telephone Access Control System, Access Control System, Wireless Telephone System, Access Control, Telephone System

References

- [E Telephone Entry System | Elika Access Systems | United States](#)
- [elikacloud.com](#)

Manuals+,