




elgato USB-C Stream Deck User Guide

[Home](#) » [elgato](#) » elgato USB-C Stream Deck User Guide 

Contents

- [1 elgato USB-C Stream Deck](#)
- [2 Product Information](#)
- [3 Product Usage Instructions](#)
- [4 Install Stream Deck](#)
- [5 Set Up Actions](#)
- [6 Personalize Keys](#)
- [7 Create Folders](#)
- [8 Edit Keys](#)
- [9 Integrate Social Media](#)
- [10 Federal Communication Commission Interference Statement](#)
- [11 Documents / Resources](#)
 - [11.1 References](#)
- [12 Related Posts](#)



elgato USB-C Stream Deck



Product Information

Specifications

- Equipment name: [Product Name]
- Type designation (Type): [Type]
- Restricted Substances and its chemical symbols:
 - Lead (Pb)
 - Mercury (Hg)
 - Cadmium (Cd)
 - Hexavalent chromium (Cr+6)
 - Polybrominated biphenyls (PBB)
 - Polybrominated diphenyl ethers (PBDE)

Product Usage Instructions

Getting Started

1. Connect the USB 3 cable to the Stream Deck+ and your computer.
2. Install any necessary drivers or software for the Stream Deck+.
3. Make sure your computer recognizes the Stream Deck+.

Using the Stream Deck+

Switching Profiles

To switch profiles on the Stream Deck+, follow these steps:

1. Press the “Switch Profile” button on the Stream Deck+.
2. Select the desired profile from the available options.

Creating Icons

To create a new icon on the Stream Deck+, follow these steps:

1. Press the “Create New Icon” button on the Stream Deck+.
2. Select an icon set from a file or create a custom icon.

Creating Folders

To create a folder on the Stream Deck+, follow these steps:

1. Press the “Create Folder” button on the Stream Deck+.
2. Enter a name for the folder.

Performing Multi Actions

To perform multi actions on the Stream Deck+, follow these steps:

1. Press the “Multi Action” button on the Stream Deck+.
2. Select the desired actions from the available options.

Switching Scenes

To switch scenes using the Stream Deck+, follow these steps:

1. Press the “Scene” button on the Stream Deck+.
2. Search for the desired scene using the on-screen search function.
3. Select the scene from the search results.

Audio Control

To control audio settings with the Stream Deck+, follow these steps:

1. Press the “Mixer-Audio” button on the Stream Deck+.
2. Adjust the volume, mute, or other audio settings as needed.

Streaming with OBS Studio or Streamlabs OBS

To stream using OBS Studio or Streamlabs OBS with the Stream Deck+, follow these steps:

1. Open OBS Studio or Streamlabs OBS on your computer.
2. Press the “Stream” button on the Stream Deck+.
3. Enter the necessary stream details, such as stream title and stream source.

FAQ

Q: How do I copy, delete, or move items on the Stream Deck+?

A: To copy, delete, or move items on the Stream Deck+, follow these steps:

1. Press and hold the item you want to copy, delete, or move.
2. Select the desired action (copy, delete, or move) from the available options.

Q: How do I customize the layout and preferences of the Stream Deck+?

A: To customize the layout and preferences of the Stream Deck+, follow these steps:

1. Press the “General”, “Preferences”, or “Layout” buttons on the Stream Deck+.
2. Adjust the settings and layout according to your preferences.

Q: How do I change accounts on the Stream Deck+?

A: To change accounts on the Stream Deck+, follow these steps:

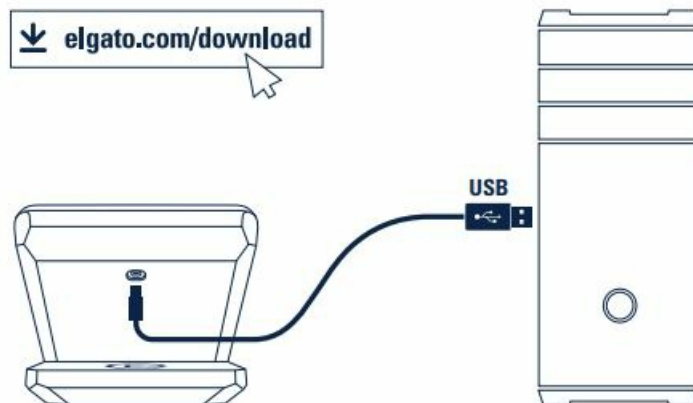
1. Press the “Accounts” button on the Stream Deck+.
2. Select the desired account from the available options.

Q: Are there language options available for the Stream Deck+?

A: Yes, the Stream Deck+ supports multiple languages. To change the language, follow these steps:

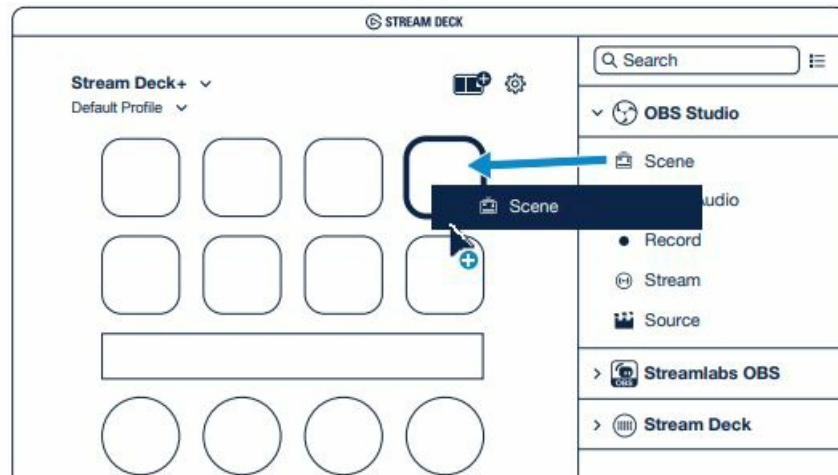
1. Press the “FR” or “DE” button for French or German language respectively.
2. Press the “ES” or “IT” button for Spanish or Italian language respectively.

Install Stream Deck



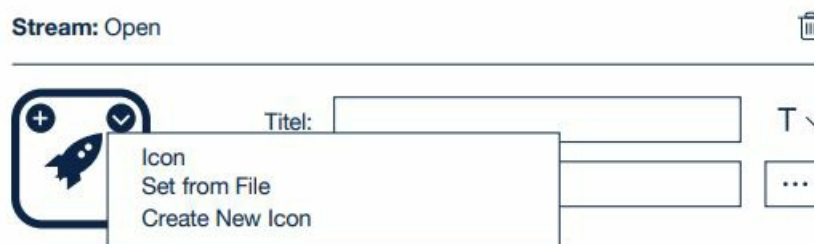
- Download and install the Stream Deck app
- Connect Stream Deck + directly to a USB port on your PC or Mac – do not use a USB hub.

Set Up Actions



- Launch the app to customize Stream Deck +. Drag actions from the right panel and drop them onto keys on the left.
- Assign single or multiple actions to the touch screen and multifunction dials.

Personalize Keys



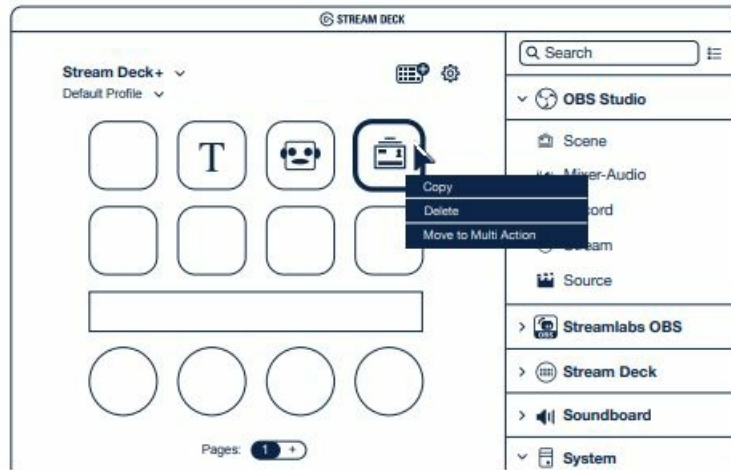
Configure your actions and personalize keys with custom icons – for best results use 144x 144 pixels jpg or png files.

Create Folders



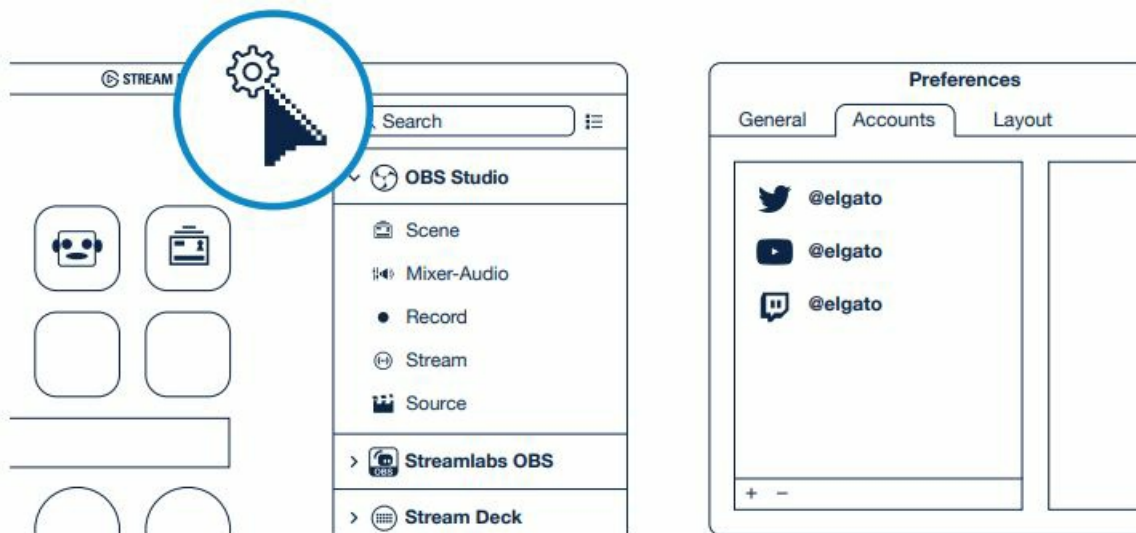
- Drag and drop “Create Folder” onto a key. Then drag and drop actions into that folder.
- Tap the back key to exit a folder and return to your main configuration.

Edit Keys



Right-click keys to copy, delete or move them.

Integrate Social Media



Enter your social media accounts to connect with your fans. Get tapping and unleash your creative genius.

Federal Communication Commission Interference Statement

This device complies with Part 15 of the FCC Rules. Operation is subject to the following two conditions: (1) This device may not cause harmful interference, and (2) this device must accept any interference received, including interference that may cause undesired operation. This equipment has been tested and found to comply with the limits for a Class B digital device, pursuant to Part 15 of the FCC Rules. These limits are designed to provide reasonable protection against harmful interference in a residential installation. This equipment generates, uses and can radiate radio frequency energy and, if not installed and used in accordance with the instructions, may cause harmful interference to radio communications. However, there is no guarantee that interference will not occur in a particular installation. If this equipment does cause harmful interference to radio or television reception, which can be determined by turning the equipment off and on, the user is encouraged to try to correct the interference by one of the following measures:

- Reorient or relocate the receiving antenna.
- Increase the separation between the equipment and the receiver.
- Connect the equipment into an outlet on a circuit different from that to which the receiver is connected.

- Consult the dealer or an experienced radio/TV technician for help.

FCC Caution: Any changes or modifications not expressly approved by the party responsible for compliance could void the user's authority to operate this equipment. For questions about Elgato product compliance with FCC regulations, please contact: Compliance Officer, Corsair Memory Inc., 115 North McCarthy Blvd, Milpitas, CA 95035, USA

Applicant Name: Corsair Memory, Inc.

Product Name: Stream Deck +

Model No.: 20GBD9901

Manufactured Year & Month: Please refer to the gift box sticker

Manufacturer & Origin: Corsair Memory, Inc./ Made in Taiwan

A/S: (7)24, 1522-1460 • Part: 51GBD9902

Documents / Resources



[elgato USB-C Stream Deck](#) [pdf] User Guide
USB-C Stream Deck, USB-C, Stream Deck, Deck

References

- [User Manual](#)