



# elgato 10GA19901 Stream Deck Mini Live Content Creation Controller User Guide

[Home](#) » [elgato](#) » elgato 10GA19901 Stream Deck Mini Live Content Creation Controller User Guide 

elgato 10GA19901 Stream Deck Mini Live Content Creation Controller User Guide



## Contents

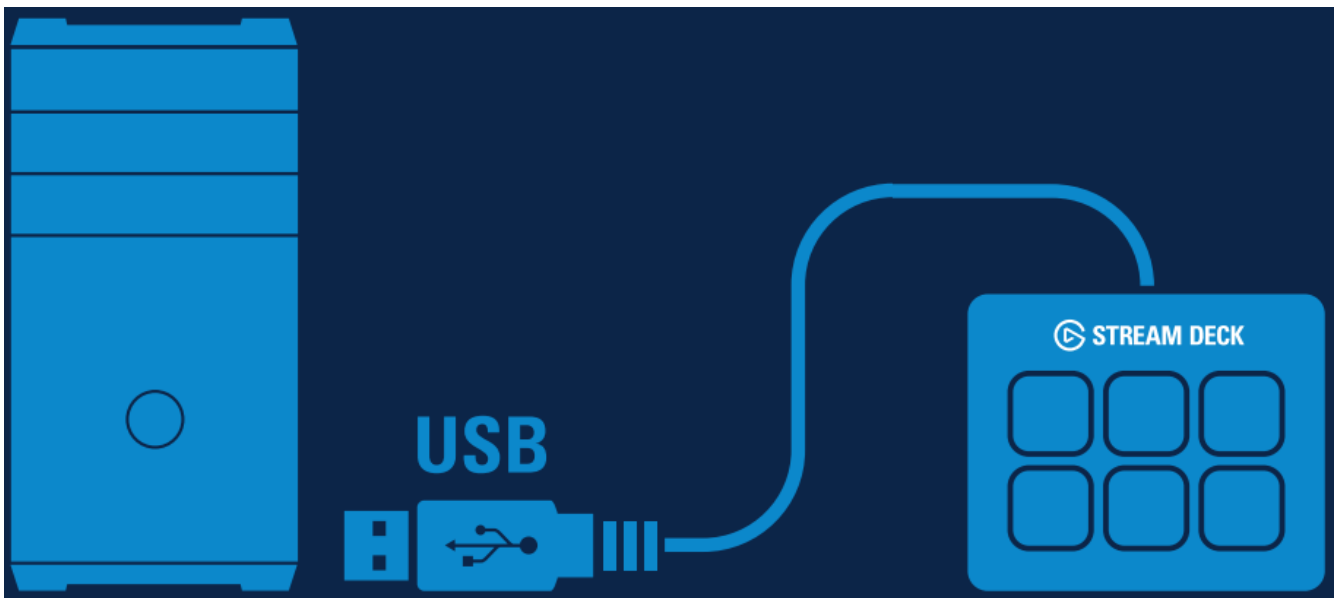
- [1 Instructions](#)
- [2 Documents / Resources](#)
- [3 Related Posts](#)

## Instructions

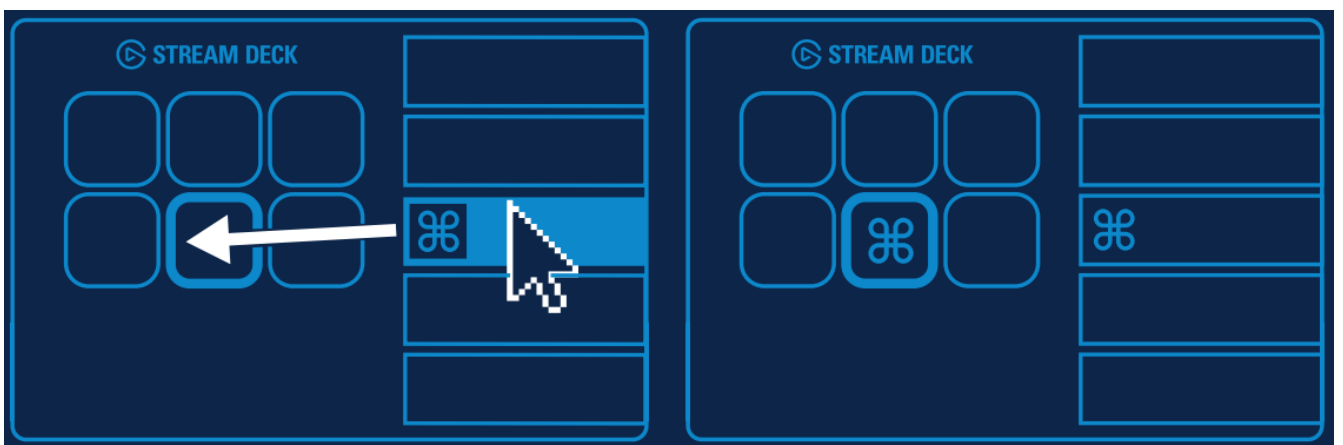
1. Download and install the Stream Deck app.



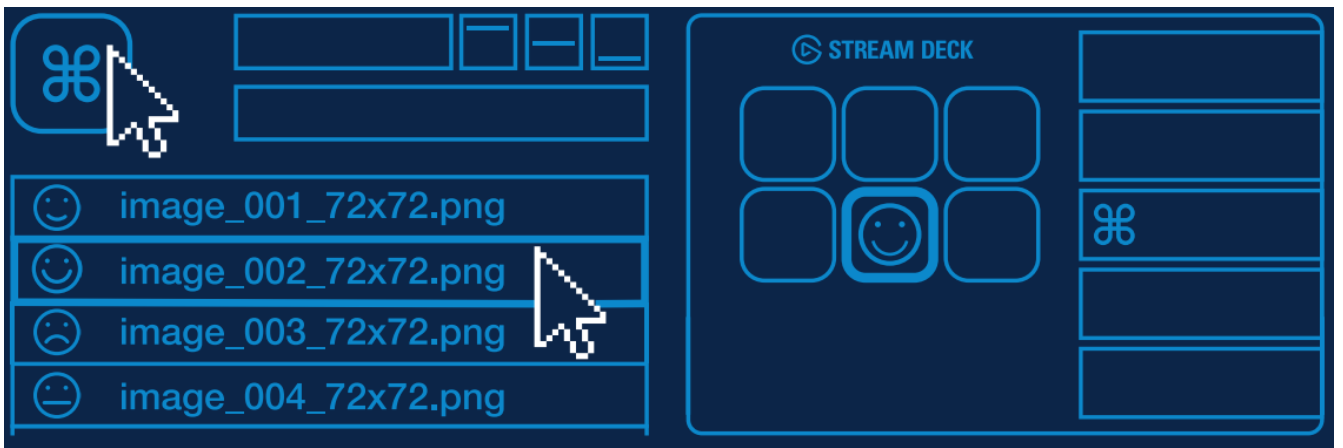
2. Connect Stream Deck Mini directly to a USB port on your PC or Mac — do not use a USB hub.



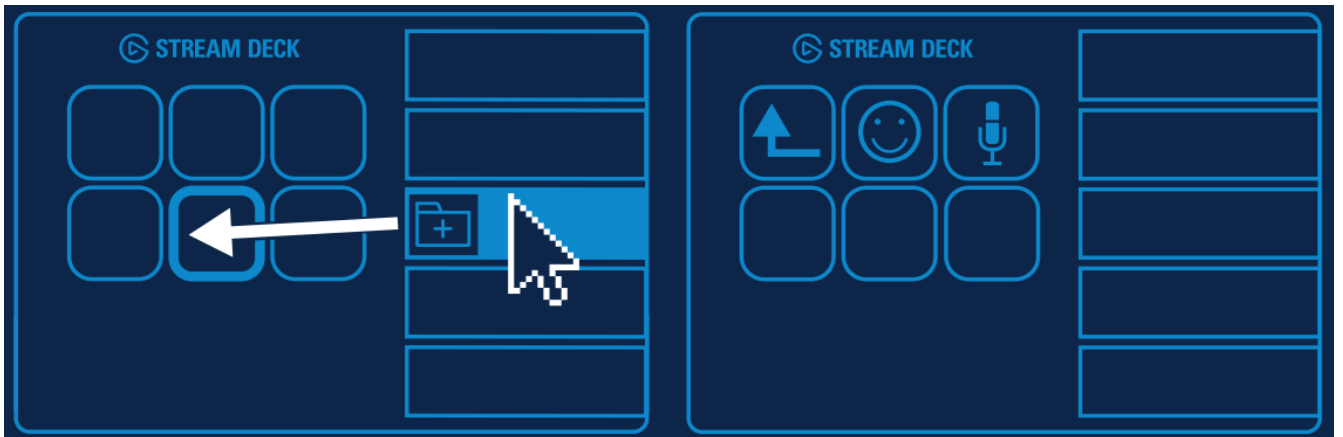
3. Launch the app to customize Stream Deck Mini. Drag actions from the right panel and drop them onto your desired keys on the left.



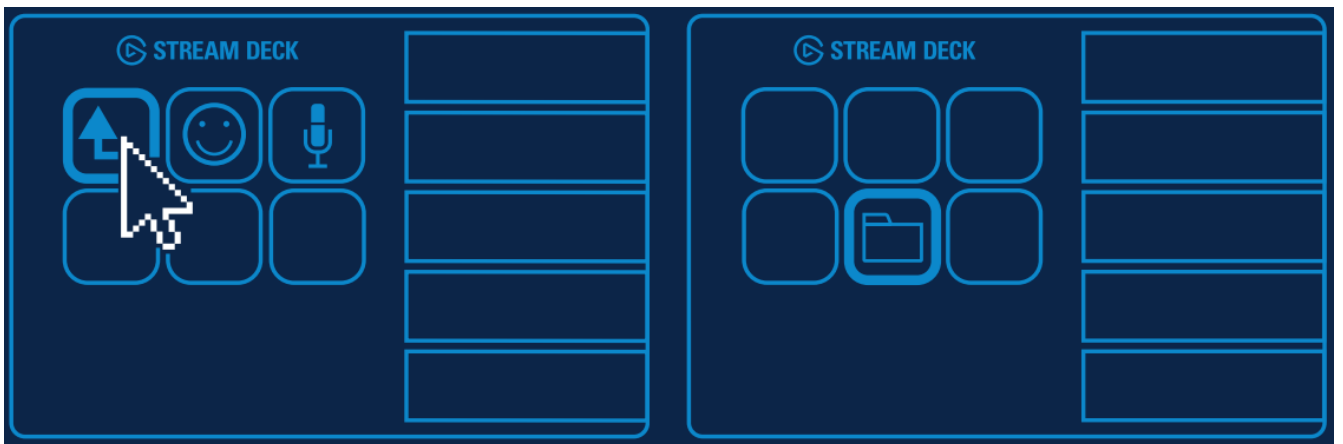
4. Configure your actions and personalize keys with custom icons —for best results use 72 x 72 pixels .jpg or .png files.



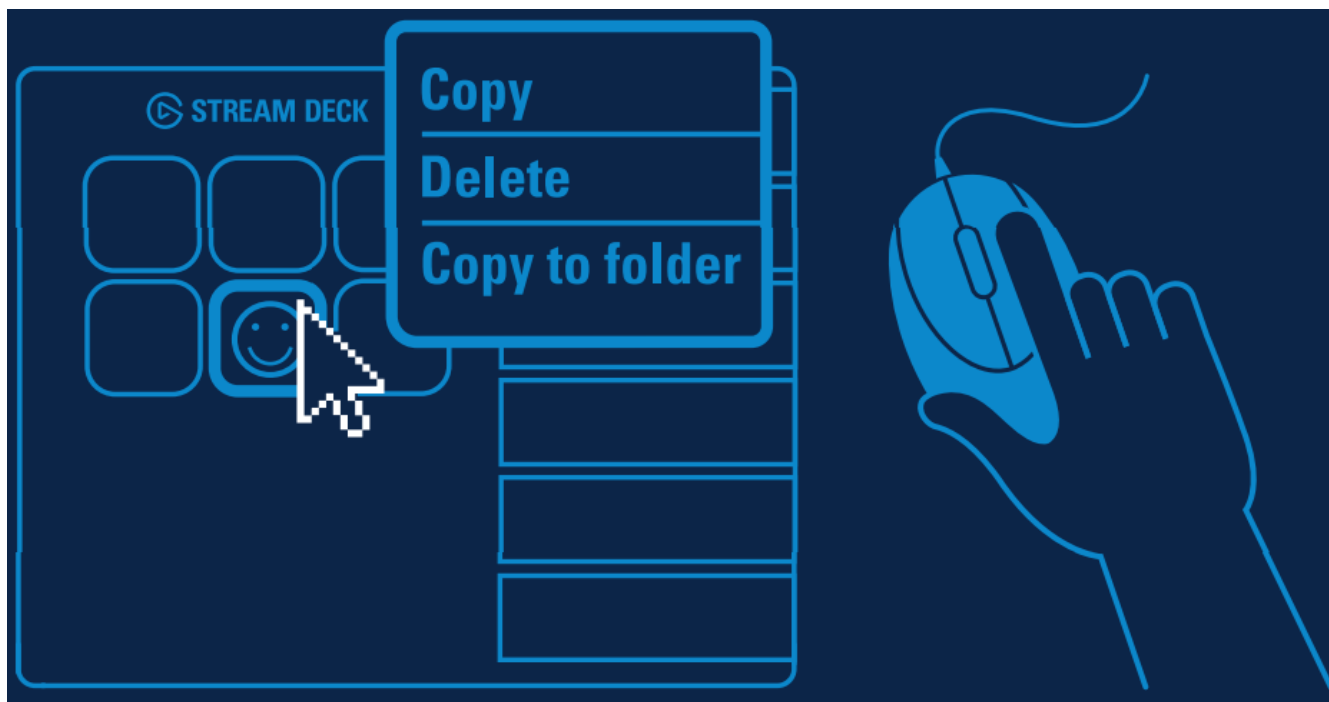
5. Drag and drop „Create Folder” onto a key. Then drag and drop actions into that folder.



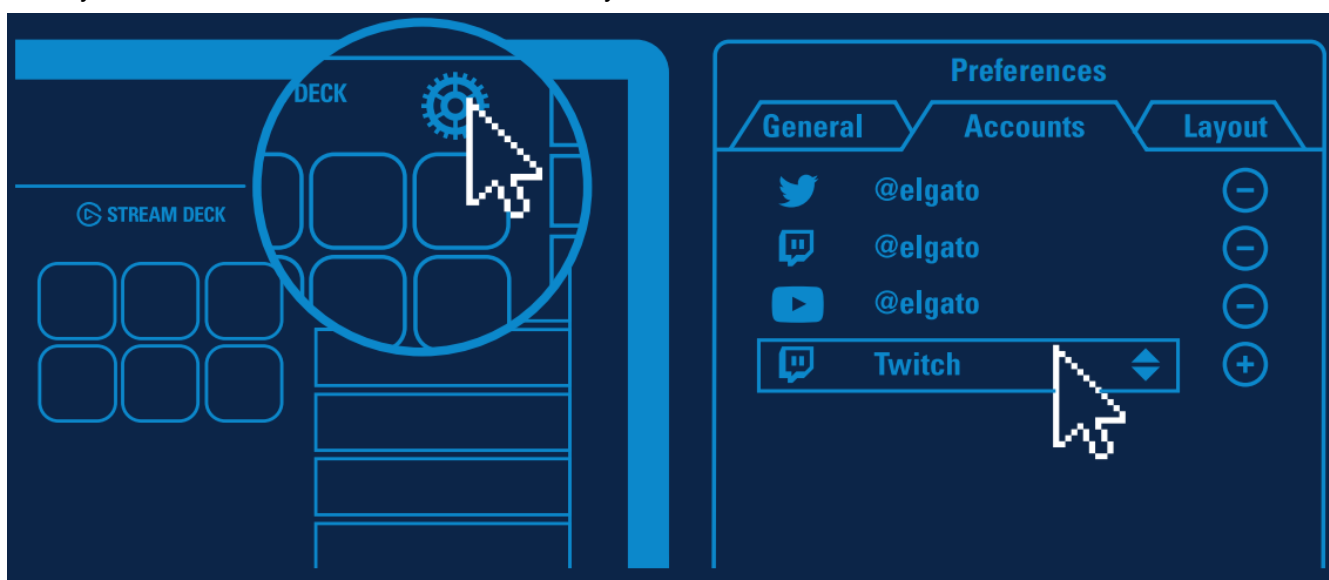
Tap the back key to exit a folder and return to your main configuration.



6. Right-click keys to copy, delete or move them.



7. Enter your social media accounts to connect with your fans.



8. Get tapping and unleash your creative genius.



### Federal Communication Commission Interference Statement

This device complies with Part 15 of the FCC Rules. Operation is subject to the following two conditions: (1) This device may not cause harmful interference, and (2) this device must accept any interference received, including interference that may cause undesired operation.


This equipment has been tested and found to comply with the limits for a Class B digital device, pursuant to Part 15 of the FCC Rules. These limits are designed to provide reasonable protection against harmful interference in a residential installation. This equipment generates, uses and can radiate radio frequency energy and, if not installed and used in accordance with the instructions, may cause harmful interference to radio communications. However, there is no guarantee that interference will not occur in a particular installation. If this equipment does cause harmful interference to radio or television reception, which can be determined by turning the equipment off and on, the user is encouraged to try to correct the interference by one of the following measures:

- Reorient or relocate the receiving antenna.
- Increase the separation between the equipment and receiver.
- Connect the equipment into an outlet on a circuit different from that to which the receiver is connected.
- Consult the dealer or an experienced radio/TV technician for help.

**FCC Caution:** Any changes or modifications not expressly approved by the party responsible for compliance could void the user’s authority to operate this equipment. For questions about Elgato product compliance with FCC regulations, please contact: Compliance Officer, Corsair Memory Inc., 115 North McCarthy Blvd, Milpitas, CA 95035, USA

Applicant Name: Corsair Memory, Inc 1Product Name (x1lgT, ). Stream Deck Mini Model No: 20GAI99021  
 Manufactured Year & Month.  
 Please refer to gift box sticker Manufacturer & Origin Corsair Memory, Inc./ Made in Taiwan A/S R—M`1, 1522-1460 • Part 51GAI9915

**Documents / Resources**

	<a href="#">elgato 10GAI9901 Stream Deck Mini Live Content Creation Controller</a> [pdf] User Guide 10GAI9901, Stream Deck Mini Live Content Creation Controller, Stream Deck Mini, Deck Mini, Live Content Creation Controller, 10GAI9901, Creation Controller
---	--