

elektor
ZD-11E Quasi
Analog
Clockwork Kit



elektor ZD-11E Quasi Analog Clockwork Kit Instruction Manual

[Home](#) » [Elektor](#) » elektor ZD-11E Quasi Analog Clockwork Kit Instruction Manual 

Contents

- [1 elektor ZD-11E Quasi Analog Clockwork Kit](#)
- [2 Product Specifications](#)
- [3 Product Usage Instructions](#)
- [4 FAQ](#)
- [5 Kit Contents](#)
- [6 Tools Needed](#)
- [7 Assembling the PCB](#)
- [8 Adjusting Trimmer Capacitor C7](#)
- [9 Bill of Materials](#)
- [10 Specifications](#)
- [11 Schematic and PCB Layout](#)
- [12 Disclaimer](#)
- [13 Documents / Resources](#)
 - [13.1 References](#)



elektor ZD-11E Quasi Analog Clockwork Kit



Product Specifications

- **Brand:** Elektor
- **Product:** Quasi Analog Clockwork Kit
- **Model:** 20944
- **Components:** PCB and all parts listed in the Bill of Materials

Product Usage Instructions

Tools Required

- Soldering iron with a relatively small tip
- Cutting pliers
- Flat-jaw pliers
- Flat and clean surface to place the PCB on during soldering

Component Placement and Soldering Order:

1. Solder Trimmer C7
2. Solder Transistors T1 and T2
3. Place Terminal block K1 on the bottom side (refer to Fig. 5)
4. Solder Crystal X1

Soldering Process:

- Follow the instructions provided in the manual to solder all components in the correct order.
- Ensure components are fitted and soldered properly as shown in the images.

FAQ

- **Q:** Where can I find the complete construction manual?
 - **A:** The complete construction manual is available as a downloadable PDF at www.elektor.com/20944.
- **Q:** What components are included in the Elektor Quasi Analog Clockwork Kit?
 - **A:** The kit includes a PCB and all parts listed in the Bill of Materials section.
- **Q:** What tools do I need for soldering the components?
 - **A:** You will need a soldering iron with a small tip, cutting pliers, flat-jaw pliers, and a flat, clean surface to work on.

Kit Contents

The kit supplied by Elektor contains the PCB and all parts stated in the Bill of Materials found in section 5. The next photo shows the components in the kit.

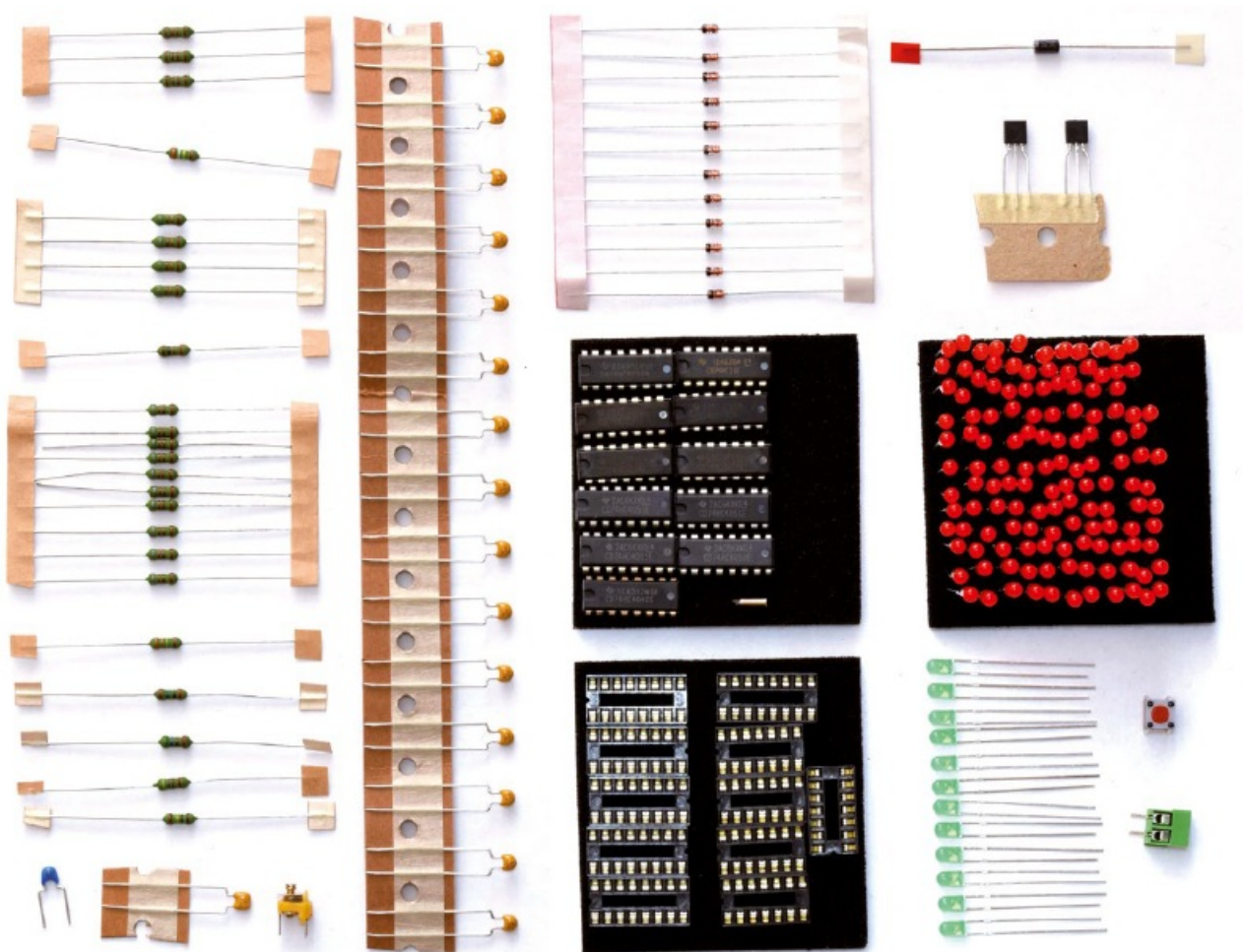


Figure 1: Components contained in the Elektor Quasi-Analog Clockwork kit.

The following images show the top and bottom side of the PCB contained in the kit.

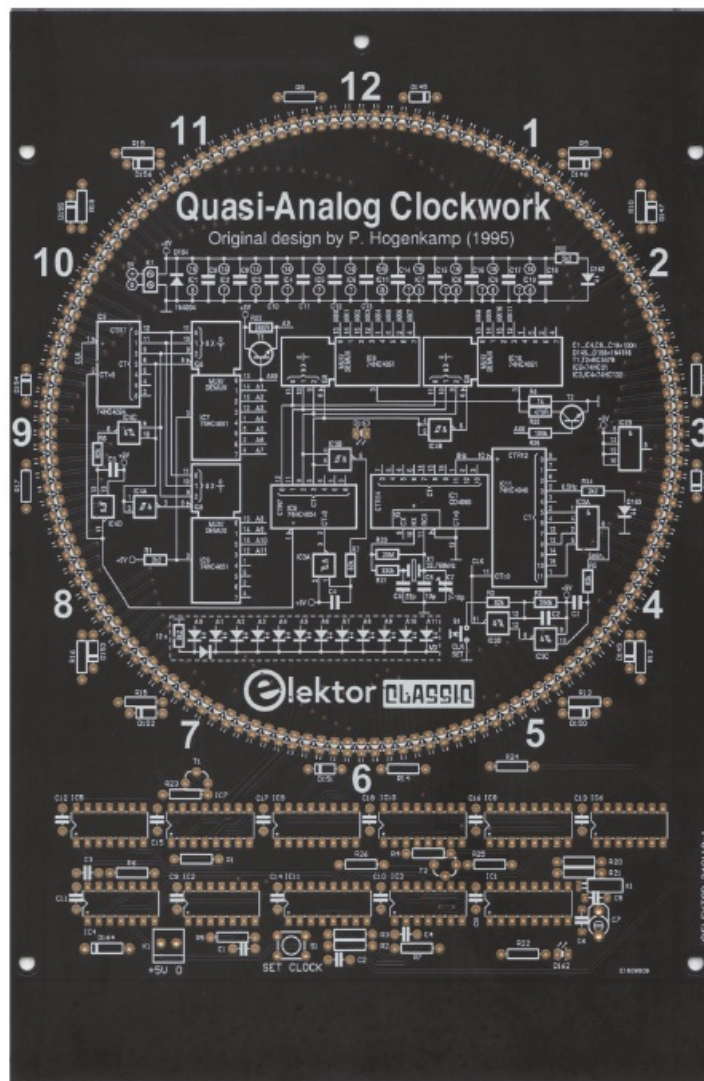


Figure 2: Top view of supplied PCB 240118-1 v1.1.



Figure 3: Bottom view of supplied PCB 240118-1 v1.1.

Tools Needed

- Soldering equipment for through-hole components. Soldering iron with a relatively small tip.
- Cutting pliers
- Flat-jaw pliers
- Flat and clean surface to place the PCB on when soldering the components

Assembling the PCB

Start by placing the lowest components first and solder them. The quartz crystal, X1, is the smallest and most fragile component and best fitted when the rest of the components are placed and soldered. In case of the diodes, pay attention to the cathode marking. First solder one lead and check polarity again — it's easier to remove a diode with just one lead soldered. When turning over the PCB to solder the leads, make sure the surface is perfectly flat. After soldering the first leads — also applicable to the resistors — check if the body of every component is level and flush on the PCB surface. Then solder the second lead of each component.

Place the following components and solder them in this order:

- 1. Diodes D145 – D156
- 2. Resistors R1 – R26
- 3. Diode D164

- **4.** Tactile switch S1
- **5.** All IC sockets: first solder 2 pins in opposite corners of each IC socket and check they are all fitted correctly; then solder the rest
- **6.** Capacitors C5 (22 pF) and C6 (10 pF)
- **7.** Capacitors C1 – C4, C8 – C18
- **8.** LEDs D1 – D144, D162, D163

The short leads (i.e. cathodes) of the LEDs in the circle are on the outside. When soldering, pay close attention to this! Place one LED at a time and solder one lead of each LED only and check if it's placed perpendicular with the PCB surface and if the last LED soldered lines up perfectly with the previously soldered ones. Check if this is the case, with every LED, every time! Also place the green LEDs in the correct position.

Between two green LEDs go 11 red LEDs. If everything looks good it's safe to solder the second lead of each LED. Before soldering, make 12 stacks of 12 LEDs, 11 red and 1 green. This is to remind you that after 11 red LEDs one green LED must be soldered. Placing all 144 LEDs in the circle first and soldering them all at once will not work since the transparent plastic of the LEDs is subject to tolerances too much, and the holes in the pads are larger than the LED wire diameter.

Proceed with soldering:

- **9.** Trimmer C7
- **10.** Transistors T1 and T2
- **11.** Terminal block K1 (place it on the bottom side, see Fig. 5)
- **12.** Crystal X1

Adjusting Trimmer Capacitor C7

Adjusting C7 requires a frequency counter with at least a 7 digits. Many modern multimeters with an graphical display also are able to measure frequency but not that accurately. The latter can be used to get an indication whether or not the 8 Hz deviates too much. Measure at pin 1 of IC1. If an accurate frequency measurement isn't possible, adjust the trimmer halfway. A quote from the datasheet published for the trimmer used (BFC280823109): "Life of trimmer is specified as 10 cycles maximum, rotation in 180° only (is the effective angle of rotation). The electrical and mechanical performance is not guaranteed if rotated beyond 10 cycles." Also solder the trimmer as close as possible to the board!

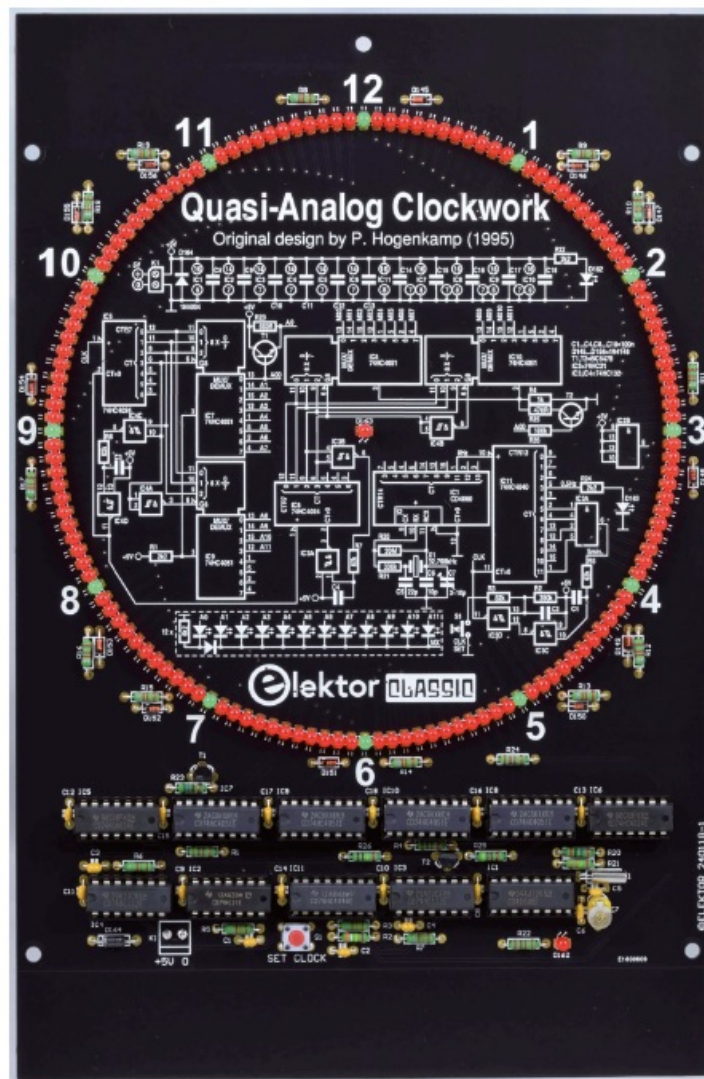


Figure 4: Front view on PCB 240118-1 v1.1. All parts are fitted and soldered.



Figure 5: View of back of PCB 240118-1 v1.1. All parts are fitted and soldered.

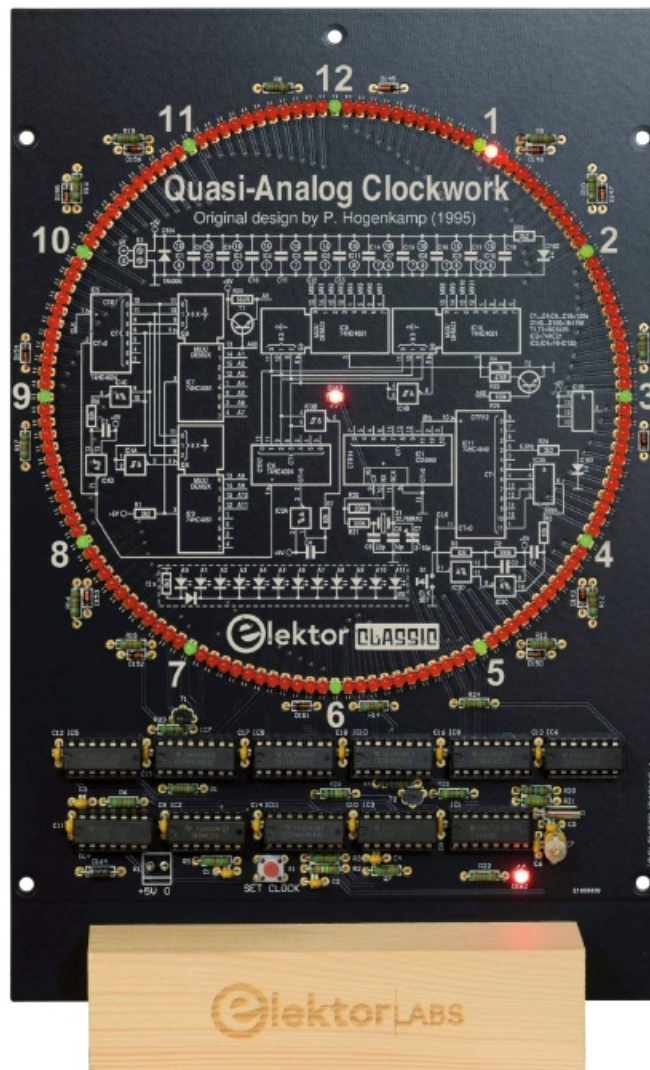


Figure 6: PCB powered and secured in wooden stand.
Time indicated is between 5 and 10 minutes past 1.

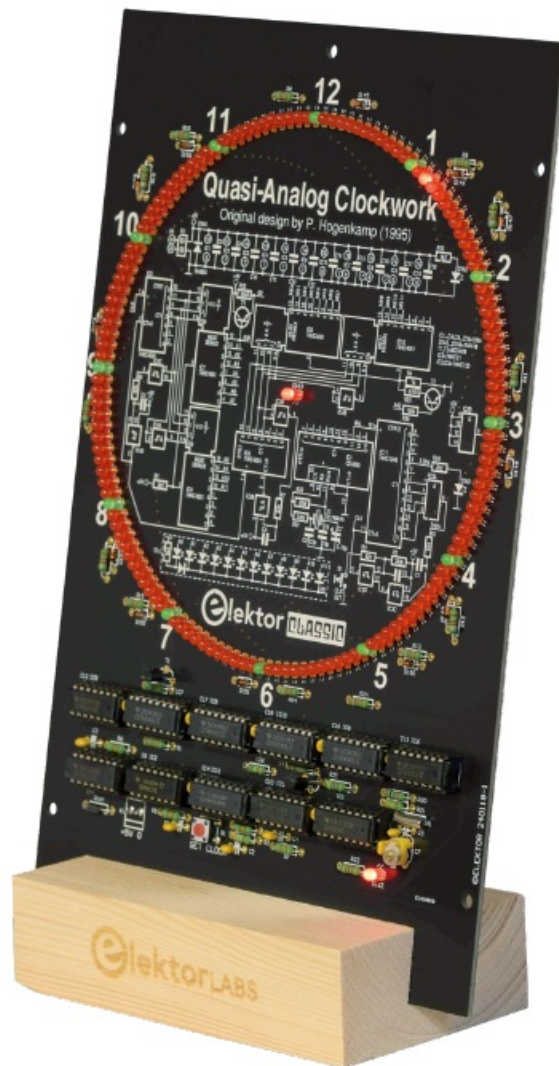


Figure 7. Another view of the clock in the wooden stand.
Time indicated is between 10 and 15 minutes past 1.

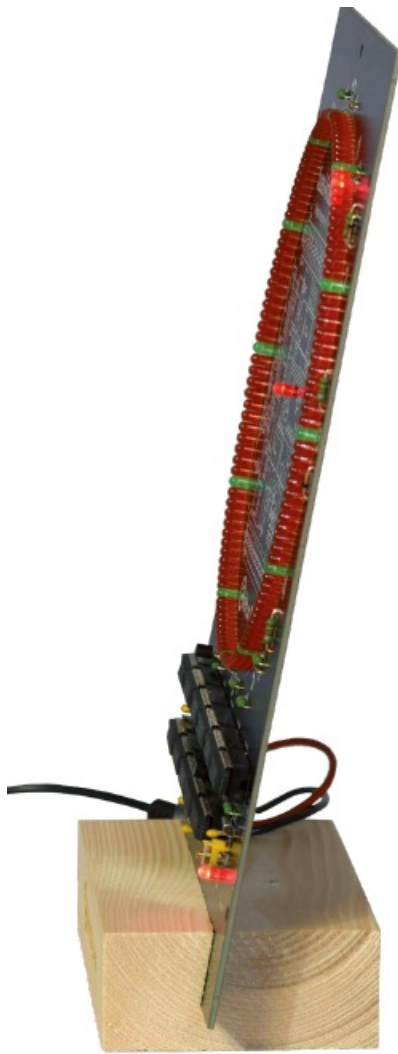


Figure 8. Side view on the clock in the wooden stand.
Time indicated is between 10 and 15 minutes past 1.

Bill of Materials

Resistors

(body 2.5 x 6.8mm, 250mW)

- R1, R22, R24 = 2.2k Ω
- R2 = 390k Ω
- R3, R5, R6, R7 = 82k Ω
- R4 = 1k Ω
- R8, R9, R10, R11, R12, R13, R14, R15, R16, R17, R18, R19 = 8.2k Ω
- R20 = 20M Ω
- R21 = 330k Ω
- R23 = 560 Ω
- R25 = 470 Ω
- R26 = 100k Ω

Capacitors

- C1, C2, C3, C4, C8, C9, C10, C11, C12, C13, C14, C15, C16, C17, C18 = 100nF, 50V, ceramic X7R, lead spacing 5mm

- C5 = 22pF, 50V, 5 %, ceramic C0G/NP0, lead spacing 5mm
- C6 = 10pF, 50V, 5 %, ceramic C0G/NP0, lead spacing 5mm
- C7 = 3~10 pF, trimmer capacitor, 150V, through hole (BFC280823109 Vishay BCcomponents)

Semiconductors

- D1, D13, D25, D37, D49, D61, D73, D85, D97, D109, D121, D133 = LED green, 3mm (T1), flat side, no ledge
- D2-D12, D14-D24, D26-D36, D50-D60, D62-D72, D74-D84, D86-D96, D98-D108, D110-D120, D122-D132, D134-D144, D162, D163 = LED red, 3 mm (T1), flat side, no ledge
- D145, D146, D147, D148, D149, D150, D151, D152, D153, D154, D155,
- D156 = 1N4148, DO-35
- D164 = 1N4004, DO-41
- T1, T2 = BC547B, TO-92
- IC1 = CD4060, DIP-16
- IC2 = 74HC21, DIP-14
- IC3, IC4 = 74HC132, DIP-14
- IC5, IC6 = 74HC4024, DIP-14
- IC7, IC8, IC9, IC10 = 74HC4051, DIP-16
- IC11 = 74HC4040, DIP-16

Miscellaneous:

- K1 = 2-way wire-to-board terminal block, 3.5mm pitch
- S1 = 6mm tactile push button
- X1 = 32.768kHz crystal, 20ppm, Cload 12.5pF, 8x3mm cylinder package
- IC2, IC3, IC4, IC5, IC6 = IC socket, DIP, 14 contacts
- IC1, IC7, IC8, IC9, IC10, IC11 = IC socket, DIP, 16 contacts
- PCB no. 240118-1 v1.1

Specifications

- **Supply voltage** 5 V
- **Supply current** 11 mA max.
- **Power supply indicator** 1 LED
- **Time display** 12 hours in a circle
- **Display** 144 LEDs
- **LED circle** 132 red LEDs, 12 green LEDs
- **Resolution (display)** 5 minutes
- **Seconds indication** 1 LED in center of circle, blinking at 0.5 Hz
- **Technology** 10 pcs HC-logic series ICs, 1 pc. 4000-logic series IC
- **Reference signal** 32 kHz quartz oscillator, adjustable
- **Set clock** 1 pushbutton, 5 minutes step
- **Programming needed** no

Web Link

- Project as published on Elektor Labs: <https://www.elektormagazine.com/labs/quasi-analog-clockwork-an-elektor-classic-a-remake>

Schematic and PCB Layout

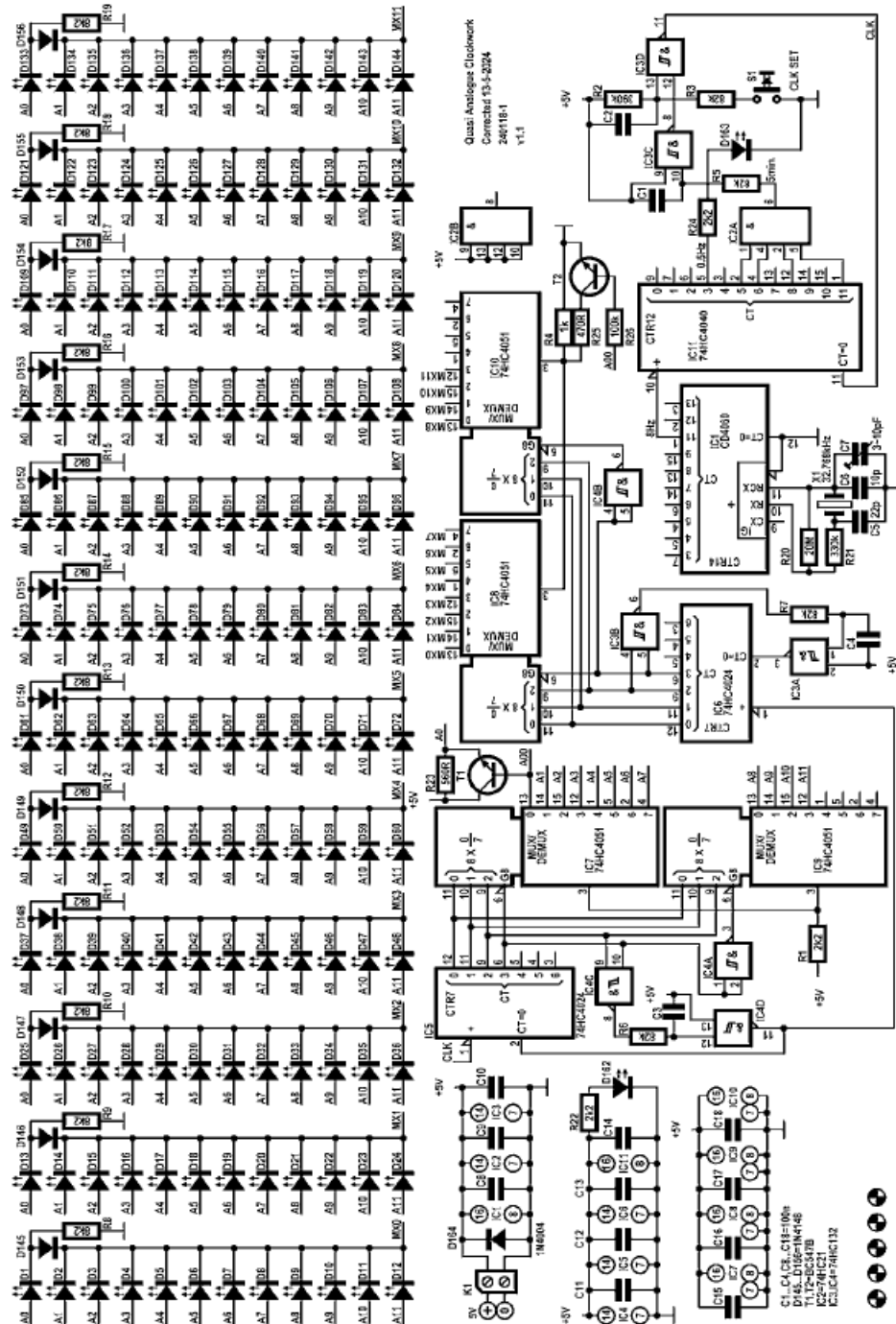


Fig. 9. Schematic of the Quasi-Analog Clockwork (240118-1 v1.1).

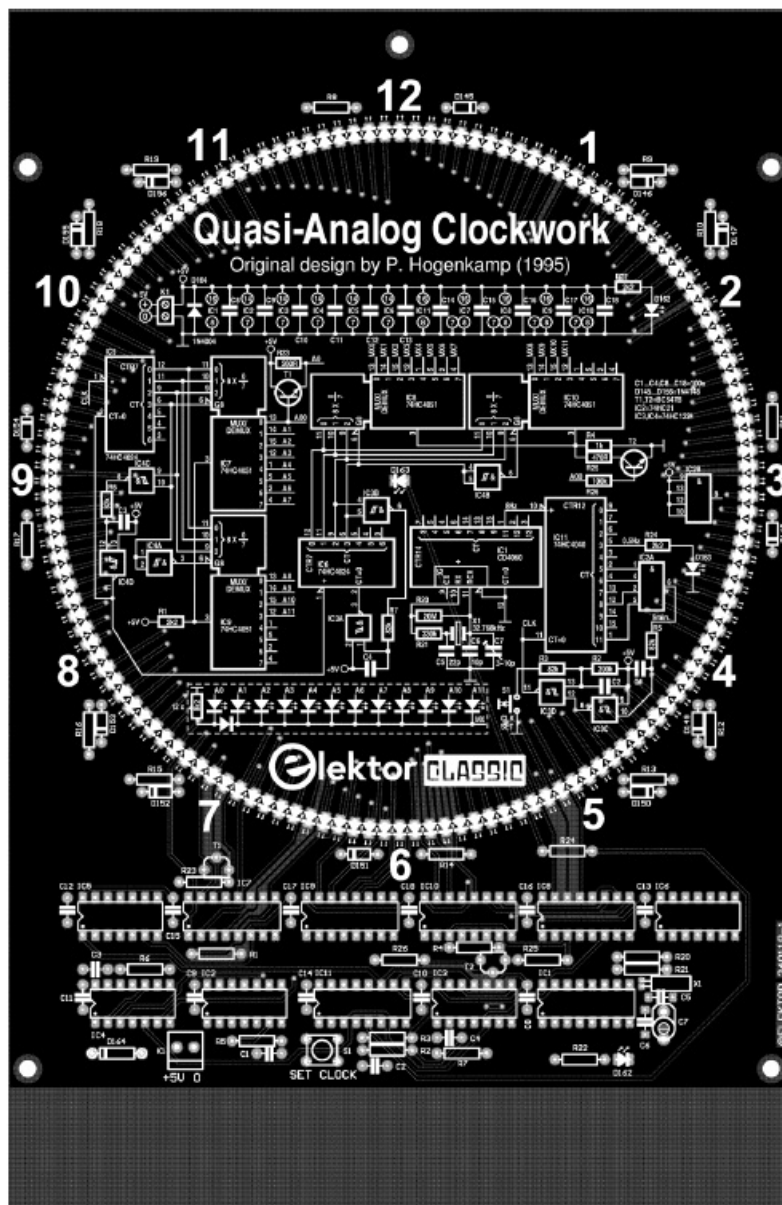


Fig. 10. Top overlay of PCB 240118-1 v1.1 of the Quasi-Analog Clockwork.



Fig. 11. Bottom overlay of PCB 240118-1 v1.1 of the Quasi-Analog Clockwork.

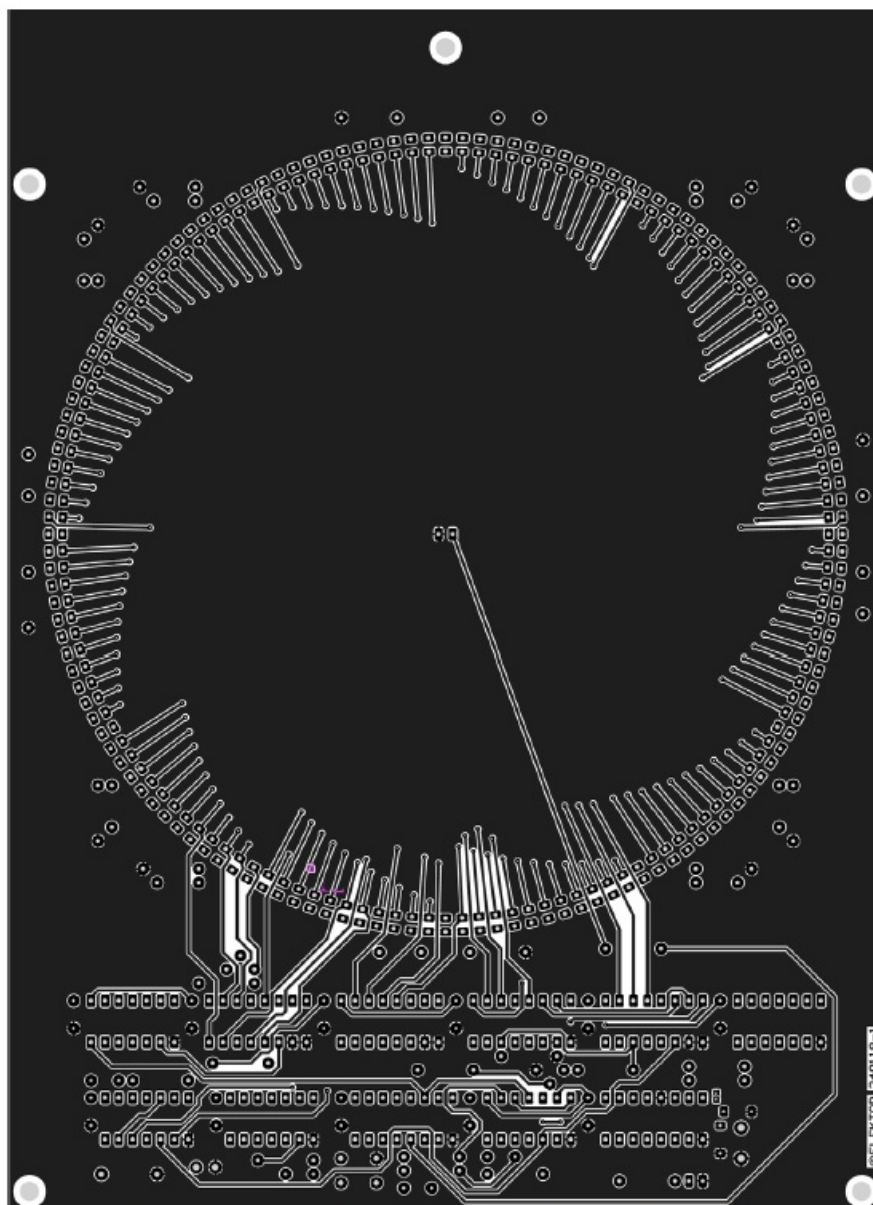


Fig. 12. Copper top of PCB 240118-1 v1.1 of the Quasi-Analog Clockwork.

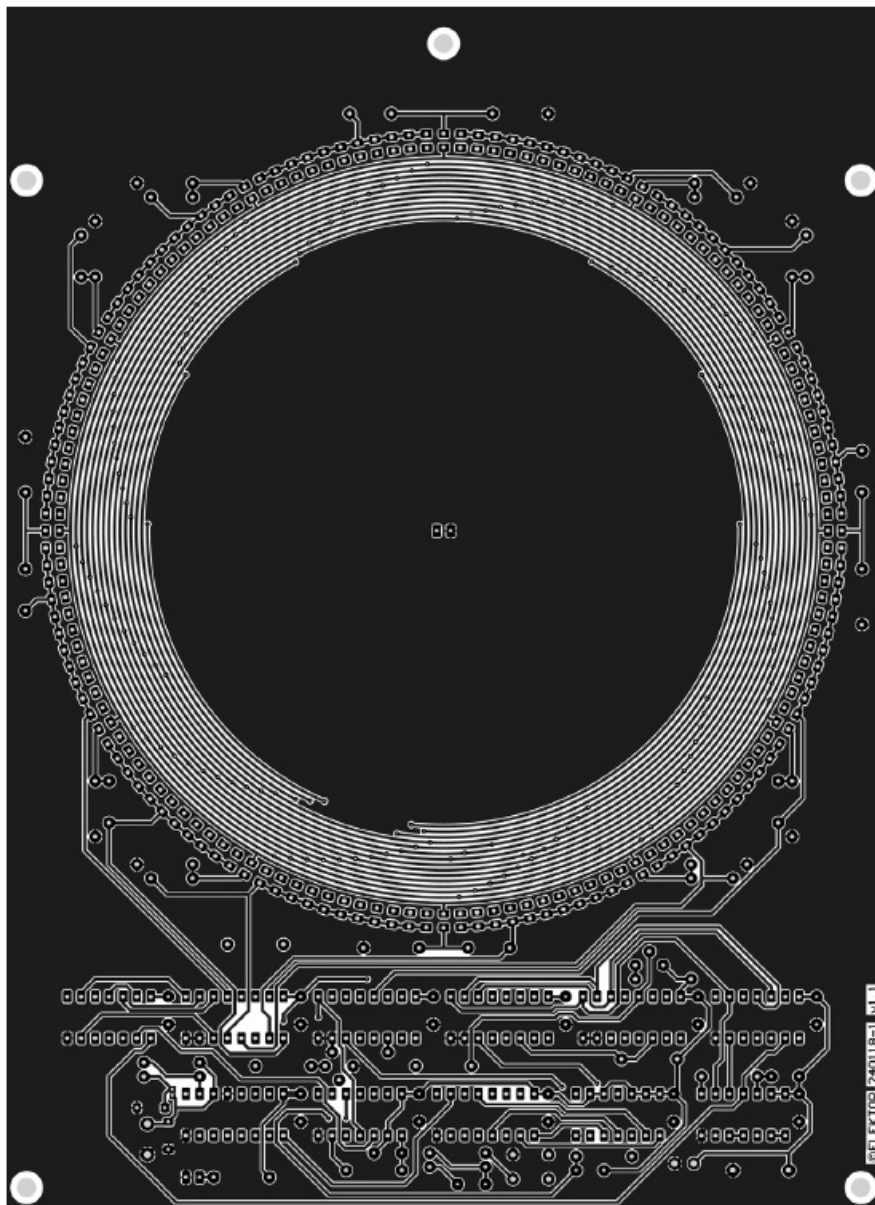


Fig. 13. Copper bottom of PCB 240118-1 v1.1 of the Quasi-Analog Clockwork.

Notice

This document is complementary to the information contained in the engineering background and discussions posted on the Elektor Labs website.

Disclaimer


The circuits described in the manual are for domestic and educational use only. All drawings, photographs, PCB layouts, and article texts are copyright Elektor International Media b.v. and may not be reproduced, transmitted, or stored in any form in whole or in part without the prior written consent from the Publisher. Patent protection may exist in respect or circuits and devices described here. The Publisher does not accept responsibility for failing to identify such patent(s) or other protection. The Publisher also disclaims any responsibility for the safe and proper function of reader-assembled projects based upon or from schematics or information published in or in relation with this Manual.

Published by Elektor International Media b.v., PO Box 11, NL-6114-JG, Susteren, The Netherlands.
www.elektor.com; www.elektormagazine.com.

This manual is available as a downloadable PDF.

You can find this essential document at the following address: www.elektor.com/20944

Documents / Resources

	elektor ZD-11E Quasi Analog Clockwork Kit [pdf] Instruction Manual ZD-11E, SKU 20944, PCB 240118-1 v1.1, ZD-11E Quasi Analog Clockwork Kit, ZD-11E, Quasi Analog Clockwork Kit, Analog Clockwork Kit, Clockwork Kit, Kit
---	---

References

- [Elektor Magazine: Your Electronics Community > Design Share Earn | Elektor Magazine](#)
- [Elektor - Learn, Design & Share electronics | Elektor Magazine](#)
- [User Manual](#)

[Manuals+](#), [Privacy Policy](#)

This website is an independent publication and is neither affiliated with nor endorsed by any of the trademark owners. The "Bluetooth®" word mark and logos are registered trademarks owned by Bluetooth SIG, Inc. The "Wi-Fi®" word mark and logos are registered trademarks owned by the Wi-Fi Alliance. Any use of these marks on this website does not imply any affiliation with or endorsement.