



# ELEGRP DTR10 Dimmer Smart Light Switch User Manual

[Home](#) » [ELEGRP](#) » ELEGRP DTR10 Dimmer Smart Light Switch User Manual 

## Contents

- [1 ELEGRP DTR10 Dimmer Smart Light Switch](#)
- [2 Product Information](#)
- [3 Product Usage Instructions](#)
- [4 DOWNLOAD THE APP](#)
- [5 BEFORE WE START](#)
- [6 ADD DEVICE BY AUTO PAIRING](#)
- [7 OR, ADD DEVICE MANUALLY](#)
- [8 CONNECT TO AMAZON ALEXA](#)
- [9 CONNECT TO GOOGLE ASSISTANT](#)
- [10 Documents / Resources](#)
  - [10.1 References](#)

# ELEGRP

**ELEGRP DTR10 Dimmer Smart Light Switch**



## Product Information

The product is a smart device that can be controlled using a mobile app. It is compatible with the ELEGRP HOME app, which can be downloaded from the Apple App Store or Google Play. The device requires a 2.4GHz Wi-Fi network for connectivity and does not support 5GHz Wi-Fi networks. It also requires Bluetooth to be turned on in the mobile phone.

## Product Usage Instructions

1. Ensure that your mobile phone's Wi-Fi is turned on and connected to a 2.4GHz Wi-Fi network.
2. Ensure that your mobile phone's Bluetooth is turned on.
3. Prepare the Wi-Fi password of the network your mobile phone is connected to.
4. Download and open the ELEGRP HOME app.
5. Register an account and log in to the app.
6. Add the device by auto pairing or manually:
  - **Auto Pairing:**
    1. Make sure the smart device is powered on.
    2. Select the device type from the list in the app.
    3. Follow the step-by-step instructions in the app to enter pairing mode (indicated by a blinking indicator light) for 3 minutes.
    4. If the indicator light is blinking fast, choose Bluetooth Mode or EZ Mode from the top right. If it is blinking slow, choose AP Mode instead.
    5. Select the 2.4GHz Wi-Fi network your mobile phone is connected to.
    6. Enter the password for that network and wait for the device to be successfully added.
  - **Manual Pairing:**
    1. Power on the smart device.
    2. Select the device type from the list in the app.
    3. Follow the step-by-step instructions in the app to enter pairing mode (indicated by a blinking

indicator light) for 3 minutes.

4. If the indicator light is blinking fast, choose Bluetooth Mode or EZ Mode from the top right. If it is blinking slow, choose AP Mode instead.
5. Select the 2.4GHz Wi-Fi network your mobile phone is connected to.
6. Enter the password for that network and wait for the device to be successfully added.

7. To connect to Amazon Alexa:

1. Open the Amazon Alexa App and tap on “Skill” in the menu.
2. Search for the Skill named “ELEGRP HOME”.
3. Enter your ELEGRP HOME or Smart Life login information from the app account to complete the account linking.
4. Tap on “Discover Devices” to sync your devices to Alexa and control them using voice commands through your Amazon Alexa devices.

8. To connect to Google Assistant:

1. Open the Google Assistant App and tap on “Home Control” in the menu.
2. Tap on the add icon “+” on the bottom right.
3. Find “Smart Life” from the list.
4. Enter your ELEGRP HOME or Smart Life login information from the app account to complete the account linking.
5. Once the linking is successful, you can assign the devices to rooms, and they will be listed in the Home Control list.

## Having Problems?

If you encounter any issues or need assistance, please contact us before returning the product. We are available to provide support and help resolve any problems you may have.

## Contact Information:

- Website: [www.elegrp.com](http://www.elegrp.com)
- Email: [support@elegrp.com](mailto:support@elegrp.com)
- Search ELEGRP on social media
- Call: 866-267-3272 (Mon-Fri 9:00-17:00 EST, US)

## DOWNLOAD THE APP



Download the ELEGRP HOME app from the Apple App Store or Google Play.



## **BEFORE WE START**

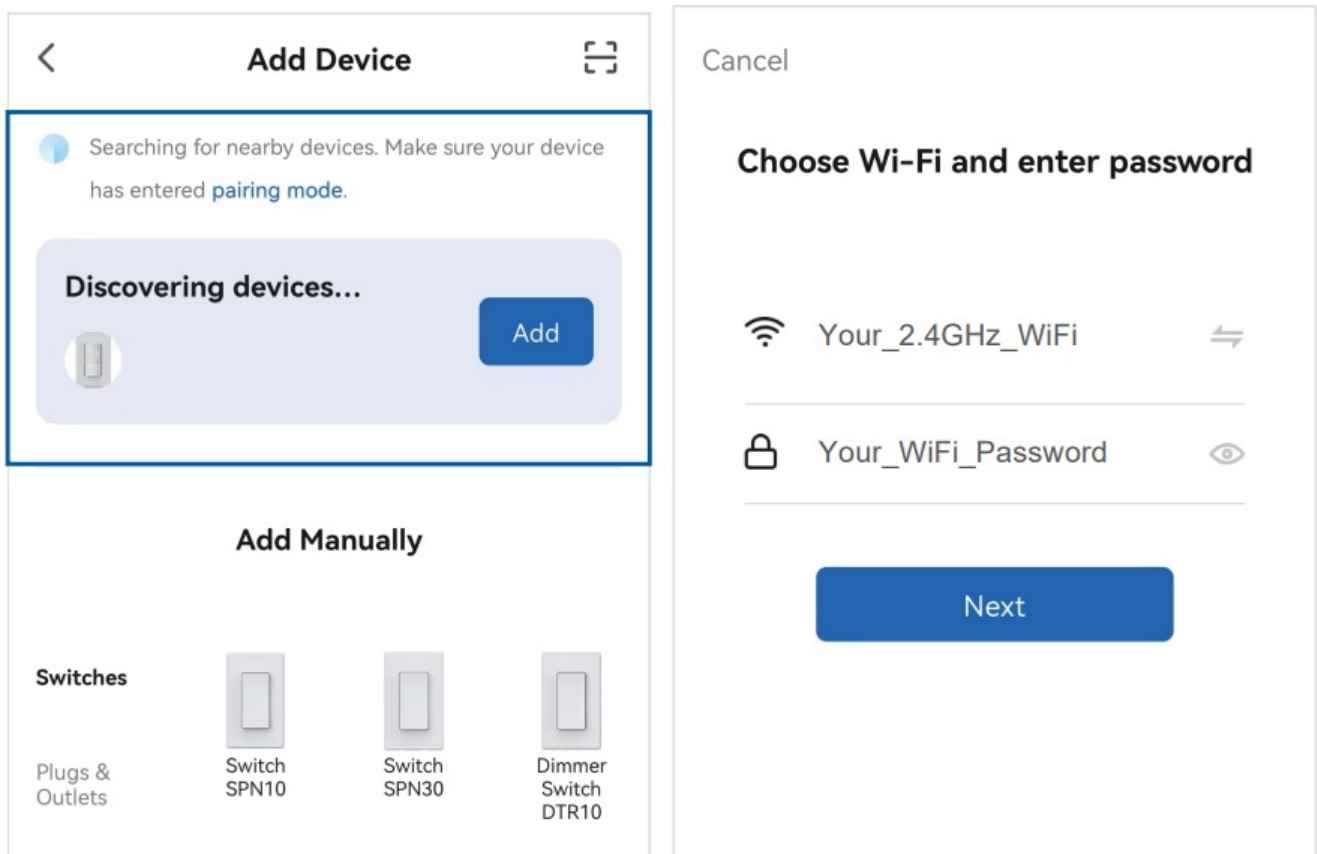
1. Ensure your mobile phone's Wi-Fi is turned on and is connected to a 2.4GHz Wi-Fi network. If your WiFi router supports both the 2.4GHz and 5GHz dual bands, set their WiFi names (SSID) differently or turn off the 5GHz from the wireless page of the router (the entry address is usually provided on the label attached to the back of the router), then connect your phone to the 2.4GHz Wi-Fi network.
2. Ensure your mobile phone's Bluetooth is turned on.
3. Prepare the WiFi password of the WiFi network that your mobile phone is connected to.
4. Open the App and register an account to log in.
5. Tap the icon "Add Device" in the middle, or the add icon "+" on the top right of the homepage.

### **2.4GHz WiFi Only**

Please make sure your WiFi network is 2.4GHz. The smart device does NOT compatible with 5GHz WiFi networks.

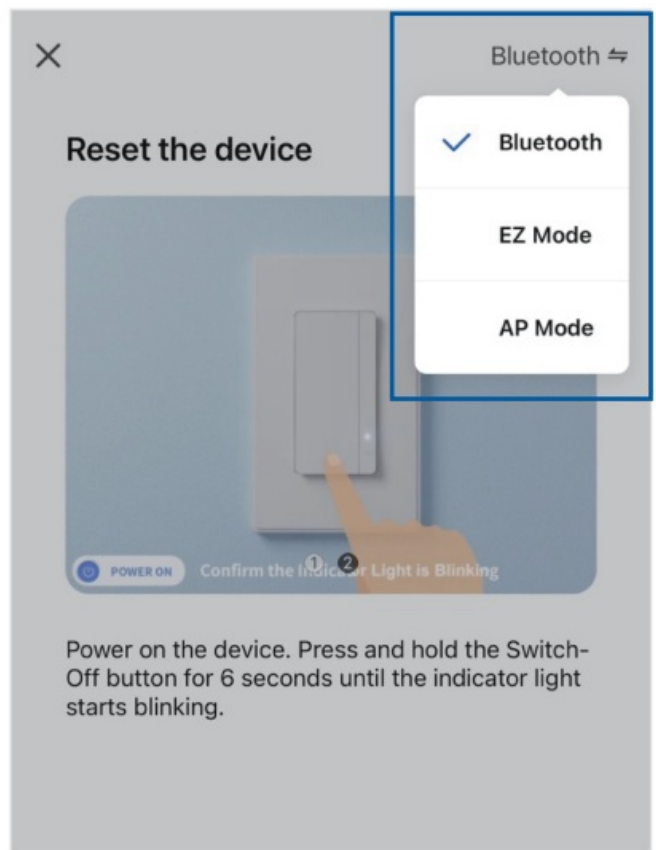
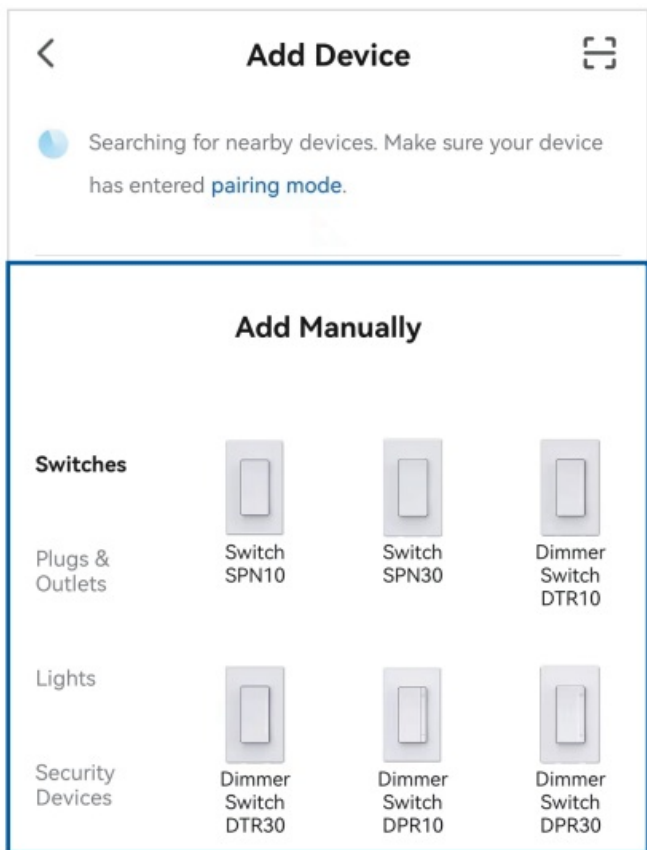
## **ADD DEVICE BY AUTO PAIRING**

1. Power on the smart device and check if the indicator light is blinking – this indicates that the device is in pairing mode. The pairing mode will last for 3 minutes.
2. a. If the indicator light is blinking, the smart device will be automatically discovered.  
2b. If the indicator light is not blinking, press and hold the switch button of the smart device for 6 seconds until the indicator light starts blinking.
3. Add device from the discovered device list on the top.
4. Select the 2.4GHz WiFi network that your mobile phone is connected to. Enter the password for that network and wait a few seconds until the device is successfully added.



## OR, ADD DEVICE MANUALLY

1. Power on the smart device and select the device type from the list.
2. Follow the instructions in the App step by step to make sure the indicator light starts blinking – this indicates that the device is in pairing mode. The pairing mode will last for 3 minutes.
3. a. If the indicator light is blinking fast, choose Bluetooth Mode or EZ Mode from the top right.  
3b. If the indicator light is blinking slow, choose AP Mode instead.
4. Select the 2.4GHz WiFi network that your mobile phone is connected to. Enter the password for that network and wait a few seconds until the device is successfully added.



## CONNECT TO AMAZON ALEXA

1. Open the Amazon Alexa App, tap "Skill" on the menu.
2. Search the Skill name "ELEGRP HOME".
3. Type in your ELEGRP HOME or Smart Life login information from the App account to finish the account linking.
4. Tap "Discover Devices" to sync your devices to Alexa, then you can control your devices using voice through your Amazon Alexa devices.

## CONNECT TO GOOGLE ASSISTANT

1. Open the Google Assistant App, tap "Home Control" on the menu. Then tap the add icon "+" on the bottom right.
2. Find "Smart Life" from the list.
3. Type in your ELEGRP HOME or Smart Life login information from the App account to finish the account linking.
4. Once the linking was successful, you can assign the devices to rooms, then your devices will be listed in the Home Control list.

### Create ELEGRP HOME Account First

Due to the limitation of the system, you'll need ELEGRP HOME App account (or Smart Life App account) to connect with Amazon Alexa or Google Assistant.

## HAVING PROBLEMS? WE CAN HELP!

Please contact us before returning it.

Thank you for purchasing our product. If you have any issues when using it, please contact us. We are here to help and provide you with the best possible support. We would love to hear from you and help you resolve any issues you may have.

Contact Us

- Website: [www.elegrp.com](http://www.elegrp.com)
- Email: [support@elegrp.com](mailto:support@elegrp.com)  
Search ELEGRP on social media
- Call us on: 866-267-3272 Mon-Fri 9:00-17:00 EST (US)

Documents / Resources

<div>User Manual</div> <div><small>How to Connect Apps</small></div> <div>ELEGRP</div>	<div><a href="#">ELEGRP DTR10 Dimmer Smart Light Switch</a> [pdf] User Manual</div> <div>DPR10, B10IQnd8-FL, DPR30, DTR10, B0CBMDVNP7, B0BHQVS8QP, B0BHQVN9SH, B0BH QVZ8GT, B0BHQWQVKH, B0BHQW24DR, B0BHQW982P, B0BHQTDGWP, B0BHQYJPSK, B 0BHQW96H6, B0BHQWDLRX, B0CCRTS6VY, B0BHQWDC62, B0BHQWCNS4, B0BHQVVV6 Y, B0BHQWTDKP, B0BHQVT46W, B0BHQVJV86, B0BHQWHG5H, DTR10 Dimmer Smart Lig ht Switch, DTR10, Dimmer Smart Light Switch, Smart Light Switch, Light Switch, Switch</div>
--	--

References

-  [ELEGRP | Make Our Life Safer](#)
- [User Manual](#)