

## Electrobes P10 LED Display Instruction Manual

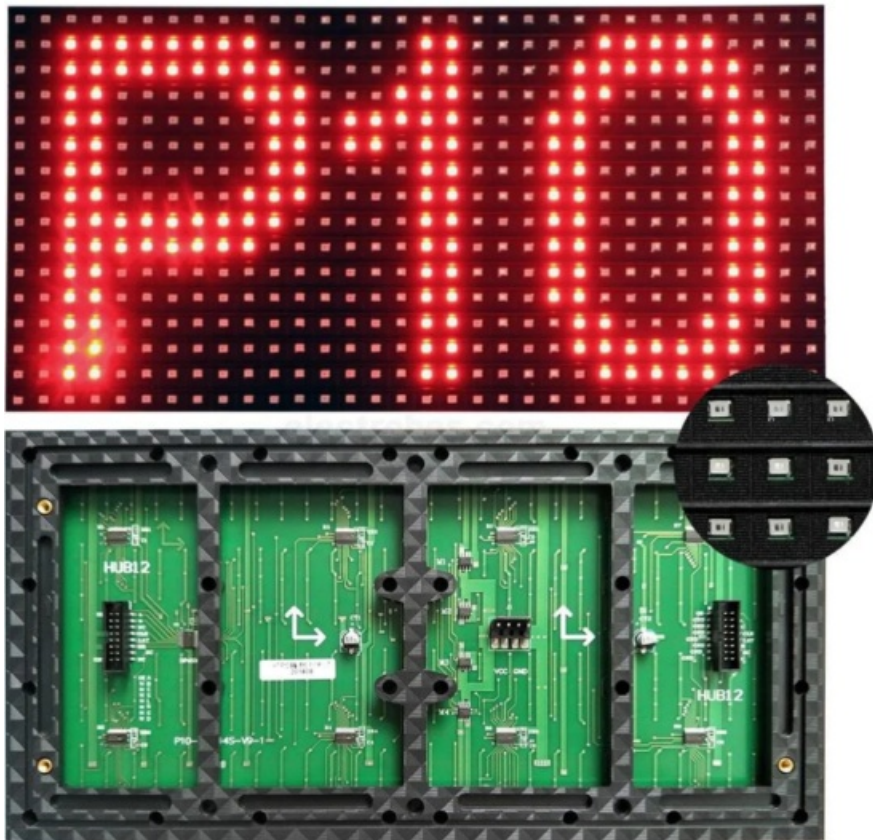
[Home](#) » [ELECTROBES](#) » Electrobes P10 LED Display Instruction Manual 

### Contents

- 1 Electrobes P10 LED Display
- 2 Operation Instruction for Phone Software
- 3 Function introduction
- 4 FCC
- 5 Documents / Resources
  - 5.1 References



### Electrobes P10 LED Display



## Operation Instruction for Phone Software

- First, please scan the QR code to download the software.
- You can also open the Google Store, search for RHX Plus, download and install it directly.

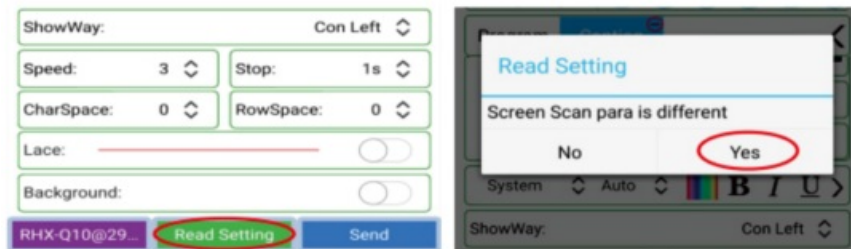


## Detailed description of software operation

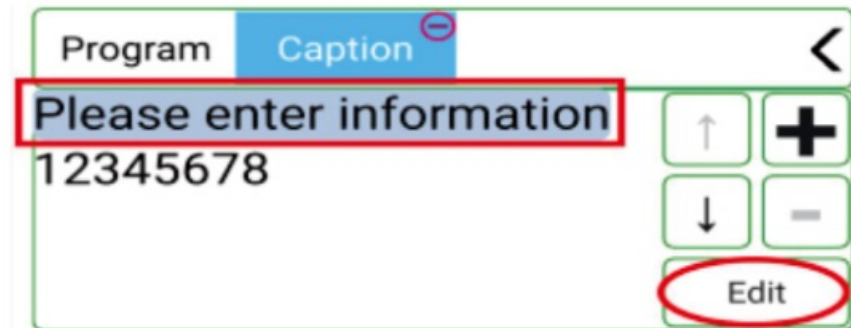
- The first step is to connect the control card, open the software, click the find button, open the mobile phone
- Wi-Fi system, and connect to the control card starting with RHX-8.



- The second step is to read back the program. Click to read back the program. Read back the screen parameters and program information in the control card.



- The third step is to edit the content. Please enter the information to be displayed in the editing area.



- The fourth step is to send the program. Click the send button in the lower right corner of the software to send the program.



## Introduction to Simple Operation and Functions

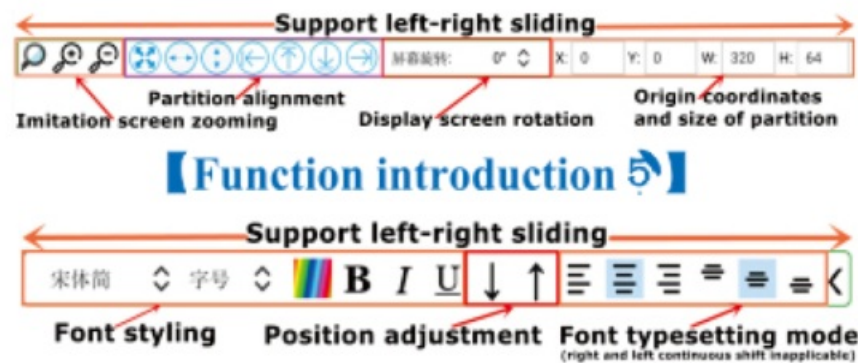
### Operation Instruction for Phone Software

|        |  |
|--------|--|
| Step 1 | Open the phone system wifi, and connect the control card beginning with "RHX" and turn off the data traffic. |
| Step 2 | read the screen parameter setting backward   |
| Step 3 | Editorial Content  |
| Step 4 | click "Send"   |

### Introduction to Functions

|   |  |
|---|--|
| ① | Add a partition (supporting captions, time, dial, picture and animation)                     |
| ② | More functions (set screen parameters, On/Off, brightness control, language selection, etc.) |
| ③ | Add multiple programs (supporting a maximum of 255 programs)                                 |
| ④ | Imitation screen zooming, partition location and size, and screen rotation                   |
| ⑤ | Font styling and typesetting   |
| ⑥ | Background and colorful word selection   |

## Function introduction

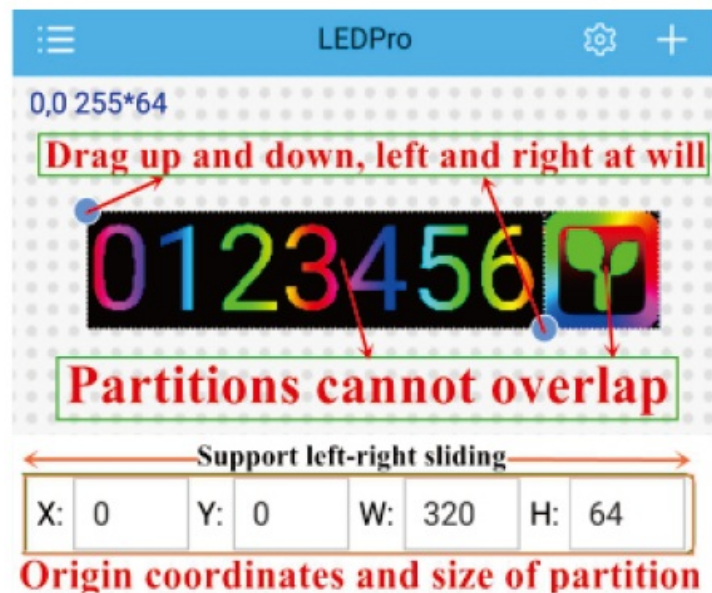


[How to realize screen rotation?]



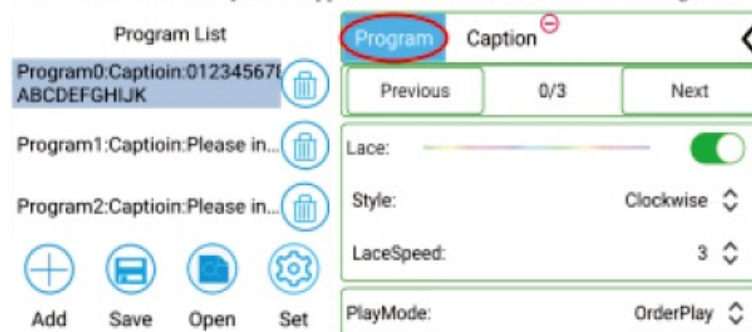
[Partition drag and position adjustment]



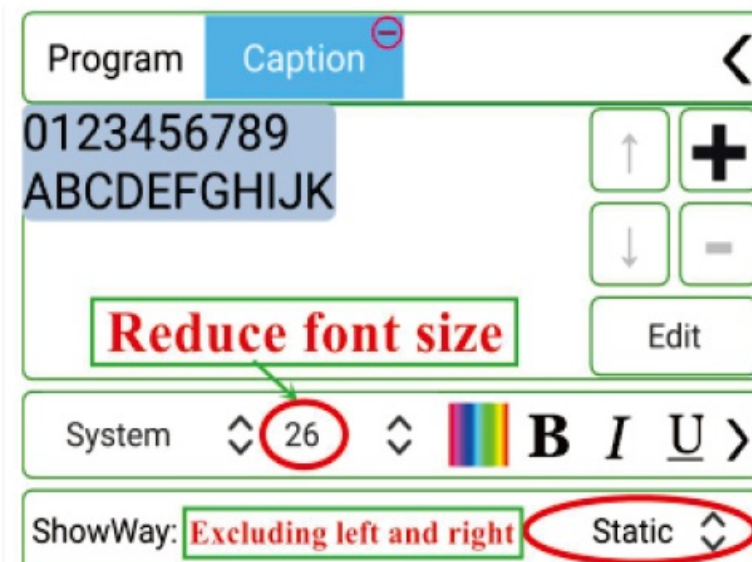
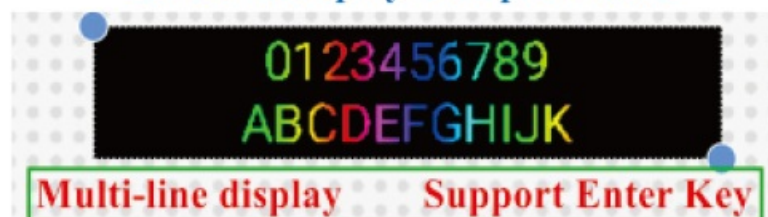


## Add multiple programs

Click on the function key in the upper left corner, It is as shown in the figure below;



## 【How to display multiple lines?】



### [Matters needing attention]

1. Permission issues (Android) , In installation of app, select ‘Trust’ and give all permissions applied by it.
2. Permission issues (iOS), Please open the communication permission. Open [Set], find (RHX Plus) in the list below, and select [Wireless Data – WLAN].
3. Please turn off the data traffic Before opening the software.

### [Software Download]

- Scan the following QR code to download, and long press to share the software.



- <http://www.rhxlod.com/rhxplas>

### FCC

#### FCC Warning:

This equipment has been tested and found to comply with the limits for a Class B digital device, pursuant to part 15 of the FCC Rules. These limits are designed to provide reasonable protection against harmful interference in a residential installation. This equipment generates, uses and can radiate radio frequency energy and, if not installed and used in accordance with the instructions, may cause harmful interference to radio communications. However, there is no guarantee that interference will not occur in a particular installation. If this equipment does cause harmful interference to radio or television reception, which can be determined by turning the equipment off and on, the user is encouraged to try to correct the interference by one or more of the following measures:

- Reorient or relocate the receiving antenna.
- Increase the separation between the equipment and receiver.
- Connect the equipment into an outlet on a circuit different from that to which the receiver is connected.
- Consult the dealer or an experienced radio/TV technician for help.

**Caution:** Any changes or modifications to this device not explicitly approved by manufacturer could void your authority to operate this equipment. This device complies with part 15 of the FCC Rules.

#### Operation is subject to the following two conditions:

1. This device may not cause harmful interference, and
2. this device must accept any interference received, including interference that may cause undesired operation.

This equipment complies with FCC radiation exposure limits set forth for an uncontrolled environment. This equipment should be installed and operated with minimum distance 20cm between the radiator and your body.

### Documents / Resources



## [Electrobikes P10 LED Display](#) [pdf] Instruction Manual 2BLXU-P10, 2BLXUP10, p10, P10 LED Display, P10, LED Display, Display

### References

- [User Manual](#)

[Manuals+](#), [Privacy Policy](#)

This website is an independent publication and is neither affiliated with nor endorsed by any of the trademark owners. The "Bluetooth®" word mark and logos are registered trademarks owned by Bluetooth SIG, Inc. The "Wi-Fi®" word mark and logos are registered trademarks owned by the Wi-Fi Alliance. Any use of these marks on this website does not imply any affiliation with or endorsement.