

ELECTRICAL 4 LESS AiQ-DIM250-LL SMART-T Smart LIVE-LIVE Rotary Zigbee Dimmer Module



ELECTRICAL 4 LESS AiQ-DIM250-LL SMART-T Smart LIVE-LIVE Rotary Zigbee Dimmer Module Installation Guide

[Home](#) » [ELECTRICAL 4 LESS](#) » ELECTRICAL 4 LESS AiQ-DIM250-LL SMART-T Smart LIVE-LIVE Rotary Zigbee Dimmer Module Installation Guide 

Contents

- [1 ELECTRICAL 4 LESS AiQ-DIM250-LL SMART-T Smart LIVE-LIVE Rotary Zigbee Dimmer Module](#)
- [2 INSTALLATION GUIDE](#)
- [3 Technical Specifications](#)
- [4 Pairing Instructions](#)
- [5 Wiring Diagram](#)
- [6 Returns & Faulty Items](#)
- [7 Dimensions](#)
- [8 Documents / Resources](#)
 - [8.1 References](#)
- [9 Related Posts](#)

ELECTRICAL

ELECTRICAL 4 LESS AiQ-DIM250-LL SMART-T Smart LIVE-LIVE Rotary Zigbee Dimmer Module



Technical Specifications

- Model: AiQ/DIM250/LL SMART-T Smart LIVE/LIVE Rotary Zigbee Dimmer Module
- Manufacturer: ALL LED LTD
- Address: 42 Sedgwick Road, Luton, LU4 9DT
- Website: www.allledgroup.com
- Email: sales@allledgroup.com
- Telephone: +44 (0)208 841 9000

Installation Guide:

Environmental Protection: Waste electrical products should not be disposed of with household waste. Please recycle where facilities exist. Check with your Local Authority or retailer for recycling advice.

(Dimensions information is not provided in the text)

Pairing Instructions

1. Power up the device for the first time.
2. Add the device through the hub interface within 15 minutes.
3. If pairing duration exceeds, follow the instructions below.

Network Pairing Instructions (if 15 minutes has elapsed):

1. Choose to add a device or accessory on your smart home hub interface.

2. Turn the light on, short press the knob once, and long press the second time until the connected load starts to step up and down in brightness twice to show pairing mode.
3. If successful, the light will flash once and return to full brightness.

Factory Reset

1. Turn on the light.
2. Short press the knob four times and long press the fifth time until the light starts to step up and down in brightness five times to indicate a successful reset.

Setting Minimum Brightness

1. Turn on the lights.
2. Press the knob three times. The lights will flicker twice to enter configuration mode.
3. Adjust the minimum brightness to your desired level and press the knob once to save the setting.

Wiring Diagram:

FAQ

Q: What should I do if my device is not pairing with the hub?

A: If your device is not pairing with the hub, please ensure that both devices are within range of each other and follow the network pairing instructions carefully.

INSTALLATION GUIDE

AiQ/DIM250/LL

SMART-T Smart LIVE/LIVE Rotary Zigbee Dimmer Module

Technical Specifications

Product Code	AiQ/DIM250/LL
Operating Voltage (V)	220-240VAC
Max Operating Current (A)	1.14A
Capacity	5-250W (LED)
Minimum Load	5W
Output Current (max)	1.36A
PF	0.8
Efficiency %	80
Network Standby Power (W)	<0.5W
Class	II
Body Material	Polycarbonate
Frame Colour	White
Switching Cycles	>20,000 times
Ingress Protection	IP20
Ambient Operating Temperature (°C)	-10°C ~ 40°C
Input Frequency (Hz)	50Hz
Guarantee	2 Years
Dimming Mode (Trailing or Leading)	Trailing

Pairing Instructions

- Network Mode: 15 Minutes
- Find and Bind (for remotes): 3 Minutes
- To add the device to your network, power up for first time and add the device through the hub. When installing for the first time, the device automatically enters pairing mode for 15 minutes, if this duration is exceeded please follow instructions below.

Network Pairing Instructions (if 15 minutes has elapsed)

1. From your smart home hub interface, choose to add a device or accessory and enter pairing mode as instructed
2. Turn the light on, SHORT PRESS the knob ONCE and LONG PRESS the SECOND TIME until the connected load starts to step up and down in brightness TWICE to show that the dimmer is in PAIRING MODE. (Pairing

mode lasts 15 mins)

3. If successful, the light will flash once and return to full brightness.

(Please factory reset and start from step 1 again if unsuccessful)

Pairing Remote to Rotary Dimmer: Note: When both devices (dimmer and remote) are not added to the smart home hub, each smart dimmer can connect with one remote maximum.

When both devices (dimmer and remote) are added to the smart home hub in the same Zigbee network, each dimmer can Connect with a maximum of 30 remotes.

If using the items on a smart hub, you MUST pair the dimmer and remote to the hub PRIOR to pairing with any remote control.

If using the module directly with a remote, you may proceed as below.

1. Turn on the lights, press the knob TWICE and LONG PRESS on the THIRD PRESS until the lights start to step up and down in brightness THREE TIMES to start the find and bind mode (timeout 3 mins).
2. Bring the remote within 10 cm of the smart dimmer (please refer to the remote manual for pairing instructions).
3. If remote has successfully connected the lights will flash 3 times.

Unpairing Remote from Rotary Dimmer: To Remove a Remote Control from your Smart Dimmer please follow the instructions below

1. Turn on the lights, press the knob TWICE and LONG PRESS on the THIRD PRESS until the lights start to step up and down in brightness THREE TIMES to start the find and unbind mode (timeout 3 mins).
2. Bring the remote within 10 cm of the smart dimmer (please refer to the remote manual for pairing instructions).
3. If remote has successfully disconnected the lights will flash 3 times.

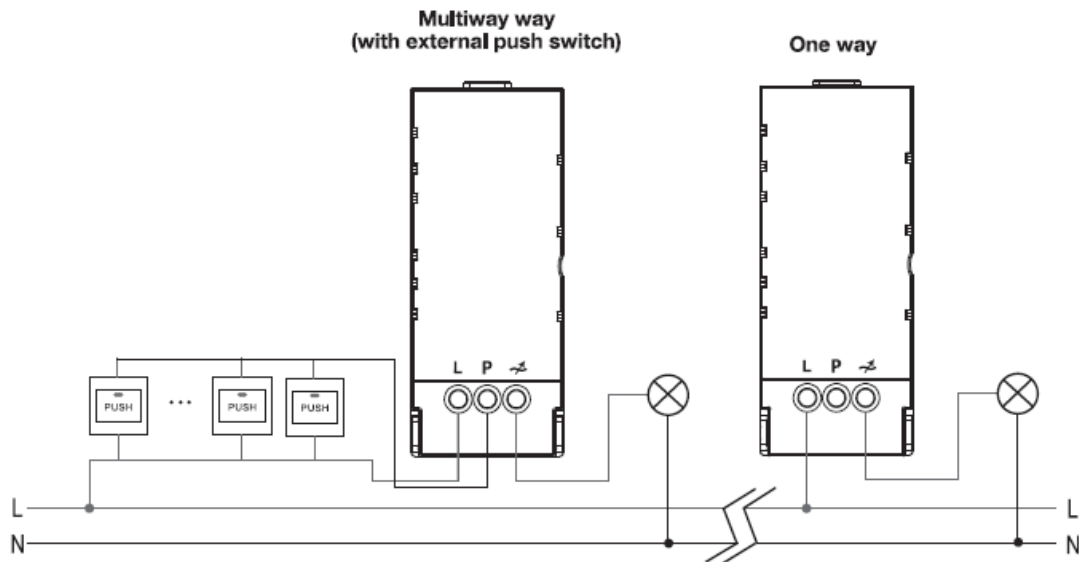
Factory Reset

1. Turn on the light, SHORT PRESS the knob FOUR TIMES and LONG PRESS the FIFTH TIME until the light starts to step up and down in brightness FIVE TIMES to show that the reset is successful.

Setting Minimum Brightness

1. Turn on the lights, press the knob THREE TIMES. The lights will flicker TWICE to show it is in the configuration mode.
2. Adjust the minimum brightness to your desired level. Once set press the knob ONCE to save your setting

Wiring Diagram



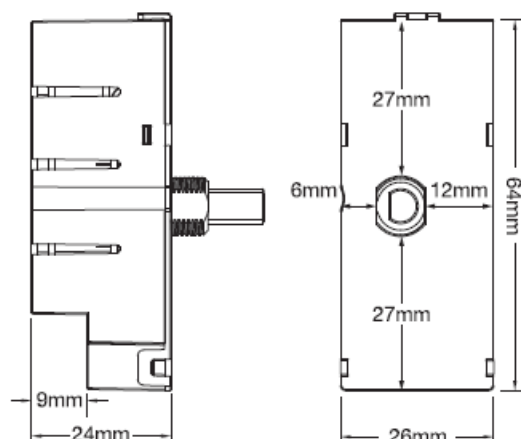
Returns & Faulty Items

- If any problem is encountered during or after installation, please call the All LED technical department to get the problem resolved as soon as possible.

Please do not just return the item to the outlet you purchased it from, as you are only entitled to a replacement or refund after the unit has undergone testing and the unit has been confirmed as having a manufacturing defect/fault. Your statutory rights are not affected.

- The manufacturer will not be deemed liable or held responsible for any damages caused by faults or manufacturing defects that may be present in any of its products or the misuse or incorrect installation of this device.
- All goods are supplied under the terms and conditions of All LED LTD, a copy of which may be obtained upon written request.

Dimensions



General Information

- Interference may occur with other products on the same frequency of 2.4Ghz
- Product may differ in colour from image on box
- Range signal can be reduced when using within materials such as concrete & metal

Environmental Protection Waste electrical products should not be disposed of with household waste. Please recycle where facilities exist. Check with your Local Authority or retailer for recycling advice

www.alliedgroup.com sales@alliedgroup.com Tel: +44 (0)208 841 9000



The manufacturer will not be deemed liable or held responsible for any damages caused by faults or manufacturing defects that may be present in any of its products or the misuse or incorrect installation of this device

Your statutory rights are not affected.



Documents / Resources

	<p>ELECTRICAL 4 LESS AiQ-DIM250-LL SMART-T Smart LIVE-LIVE Rotary Zigbee Dimmer Module [pdf] Installation Guide</p> <p>AiQ-DIM250-LL SMART-T Smart LIVE-LIVE Rotary Zigbee Dimmer Module, AiQ-DIM250-LL S MART-T, Smart LIVE-LIVE Rotary Zigbee Dimmer Module, LIVE-LIVE Rotary Zigbee Dimmer Module, Rotary Zigbee Dimmer Module, Zigbee Dimmer Module, Dimmer Module, Module</p>
--	---

References

- [Leading manufacturer of high-quality LED lighting products since 2014. Committed to innovative, energy-efficient solutions for wholesalers and electricians. Our sustainable LED technology offers superior light quality, reducing energy bills and maintenanc](#)
- [User Manual](#)

[Manuals+](#), [Privacy Policy](#)

This website is an independent publication and is neither affiliated with nor endorsed by any of the trademark owners. The "Bluetooth®" word mark and logos are registered trademarks owned by Bluetooth SIG, Inc. The "Wi-Fi®" word mark and logos are registered trademarks owned by the Wi-Fi Alliance. Any use of these marks on this website does not imply any affiliation with or endorsement.