



Electra PAS.17A Terminal Address Programmer Instruction Manual

September 1,
2025

ELECTRA



Contents [[hide](#)]

1 USE INSTRUCTION

1.1 Terminal Address Programmer

1.1.1 DESCRIPTION

1.1.2 CONNECTION TO THE TERMINAL

1.1.3 ON/ OFF

1.1.4 PROGRAMMING

2 Documents / Resources

2.1 References

USE INSTRUCTION

Terminal Address Programmer



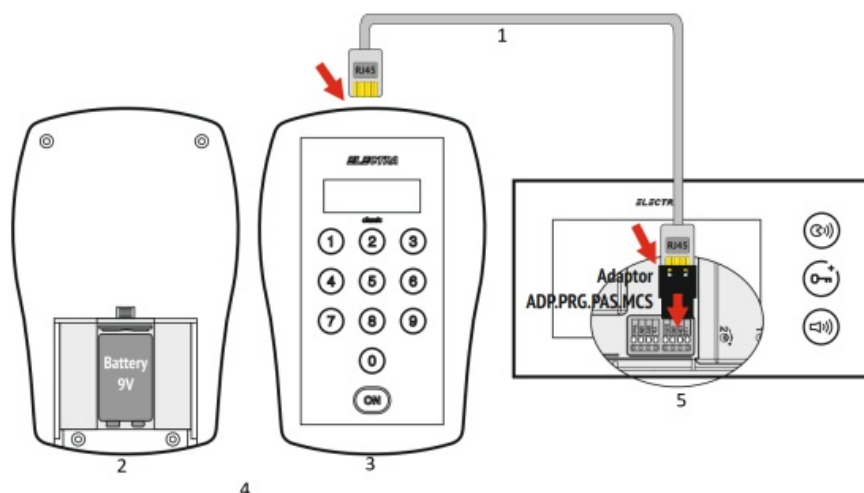
PRG.PAS.MCS
170 x 112 x 35 mm/ 270 g
Plastic case + mechanical keyboard 0°C ... 45°C – IP 31
Power supply: 9V (battery/rechargeable battery)
Connection to the terminal via UTP Patch Cable 0.25 cm
Addresses available for programming: between “000” and “998” Typing “999” ends the address programming.

DESCRIPTION

The **PRG.PAS.MCS** programmer allows the programming of the address (apartment number) for all types of terminals in the **Classic Line** range: PAS.17A, PAS.27X, PAS.37X, MCS.47X.

This programmer serves as the mobile alternative to the terminal address programming function, enabling the address to be programmed both on-site and in the office, by a single person.

CONNECTION TO THE TERMINAL



1. UTP Patch Cable 0.25 cm
2. Back
3. Front
4. PRG.PAS.MCS Programmer
5. Terminal video – audio (MCS.47X, PAS.27X, PAS.37X)


ON/ OFF


1. The programmer is turned on by pressing the ON key.
2. The programmer turns off:
 - 3 seconds after entering the last digit of the programmed address;
 - 10 seconds after being turned on, if no key is pressed.

PROGRAMMING

Step 1: Connect the programmer to the terminal.

Step 2: Press the **ON** key on the programmer → The display shows **[Adresa post]**.

Step 3: On the terminal, press and hold the  key.



Step 4: On the programmer, enter the terminal address to be programmed (3 digits required). After entering the last digit, the terminal will issue a confirmation beep, and the  key can be released.

MADE in EU by:

ELECTRA s.r.l

Parc Industrial Miroslava

Str. Principala 33, 707307, Jud. Iași – RO

  +40 232 214.370

 sales@electra.ro



 www.electra.ro

SUPPORT

ELECTRA Building Communications GmbH

Gadnergasse 71, Stockwerk 1, Büro Top 132


1110 Wien – AT

  +43 1 810 20 99

 sales@electra-automation.at

 www.electra-automation.at


Documents / Resources

	Electra PAS.17A Terminal Address Programmer [pdf] Instruction Manual PAS.17A, PAS.27X, PAS.37X, MCS.47X, PAS.17A Terminal Address Programmer, PAS.17A, Terminal Address Programmer, Address Programmer, Programmer
---	---

References

- [User Manual](#)

 Electra

 Address Programmer, Electra, MCS.47X, PAS.17A, PAS.17A Terminal Address Programmer, PAS.27X, PAS.37X, Programmer, Terminal Address Programmer

Leave a comment

Your email address will not be published. Required fields are marked *

Comment *

Name

Email

Website

☐ Save my name, email, and website in this browser for the next time I comment.

Post Comment

Search:

e.g. whirlpool wrf535swhz

Search

[Manuals+](#) | [Upload](#) | [Deep Search](#) | [Privacy Policy](#) | [@manuals.plus](#) | [YouTube](#)

This website is an independent publication and is neither affiliated with nor endorsed by any of the trademark owners. The "Bluetooth®" word mark and logos are registered trademarks owned by Bluetooth SIG, Inc. The "Wi-Fi®" word mark and logos are registered trademarks owned by the Wi-Fi Alliance. Any use of these marks on this website does not imply any affiliation with or endorsement.