

Elecrow MSP0962 0.96inch IPS TFT SPI Display Module User Manual

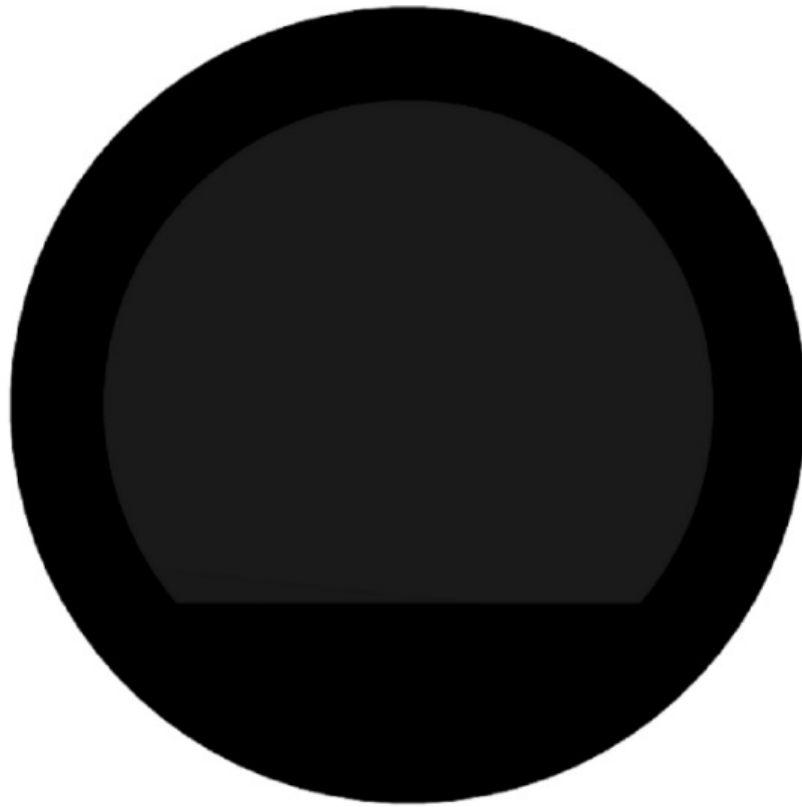
[Home](#) » [ELECROW](#) » Elecrow MSP0962 0.96inch IPS TFT SPI Display Module User Manual 

Contents

- 1 Elecrow MSP0962 0.96inch IPS TFT SPI Display Module
- 2 Product Information
- 3 Product Usage Instructions
- 4 Resource Description
- 5 Interface Description
- 6 Working principle
- 7 Hardware Description
- 8 Example program usage instructions
- 9 Common tool software
- 10 Documents / Resources
 - 10.1 References



Elecrow MSP0962 0.96inch IPS TFT SPI Display Module



Product Information

Specifications:

- **Display Size:** 0.96 inches
- **Display Type:** IPS TFT SPI
- **Controller:** ST7789H2
- **Color Depth:** 16bit (RGB565)
- **Colors:** Up to 65K

Product Usage Instructions

Hardware Description:

The module has the following interface pins:

- **GND:** LCD power ground
- **VCC:** LCD power positive (Recommended to connect to 5V)
- **SCL:** LCD SPI bus clock signal
- **SDA:** LCD SPI bus write data signal
- **RES:** LCD reset control signal
- **DC:** Data/command selection control signal
- **CS:** LCD selection control signal
- **BLK:** LCD backlight control signal

Example Program Usage Instructions:

The display controller uses a specific method to set pixel addresses and color values. Follow the process of setting the address first and then setting the color value to display content correctly.

Common Tool Software:

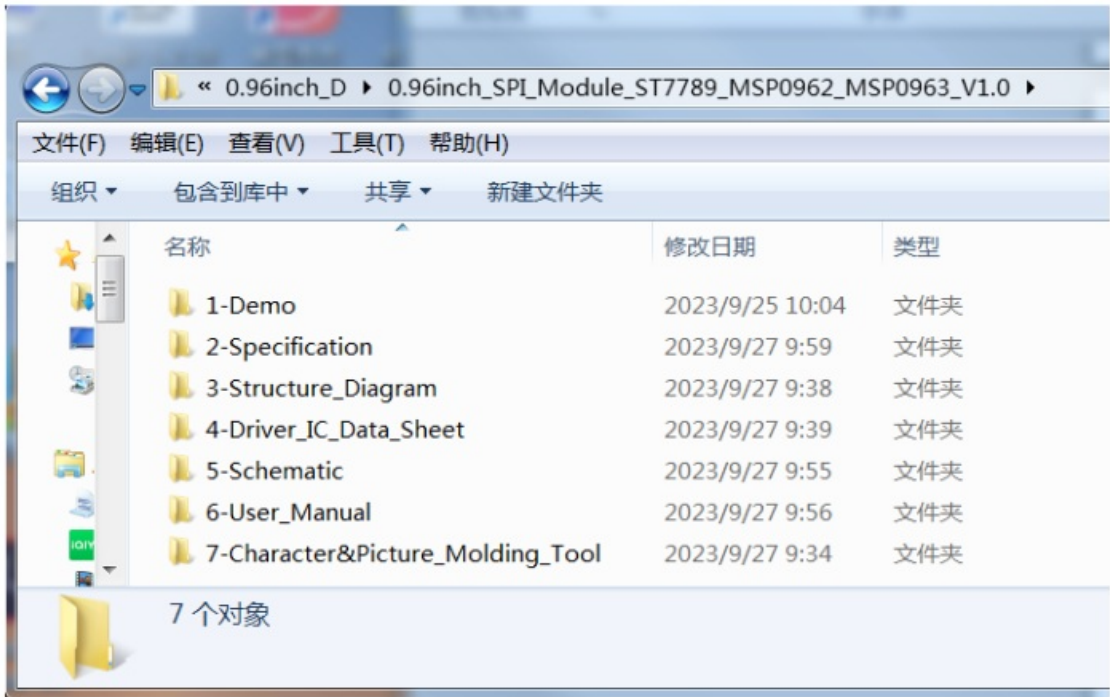
The product includes software for image and character extraction. These tools are required for image and text display tests in the sample program. Follow the software usage instructions provided in the resource directory.

FAQ:

- **Q: What is the recommended power supply voltage for the module?**
A: It is recommended to connect the VCC pin to a 5V power source for optimal performance.
- **Q: How many colors can the display show?**
A: The display can show up to 65K colors using the ST7789H2 controller with a color depth of 16bit (RGB565).

Resource Description

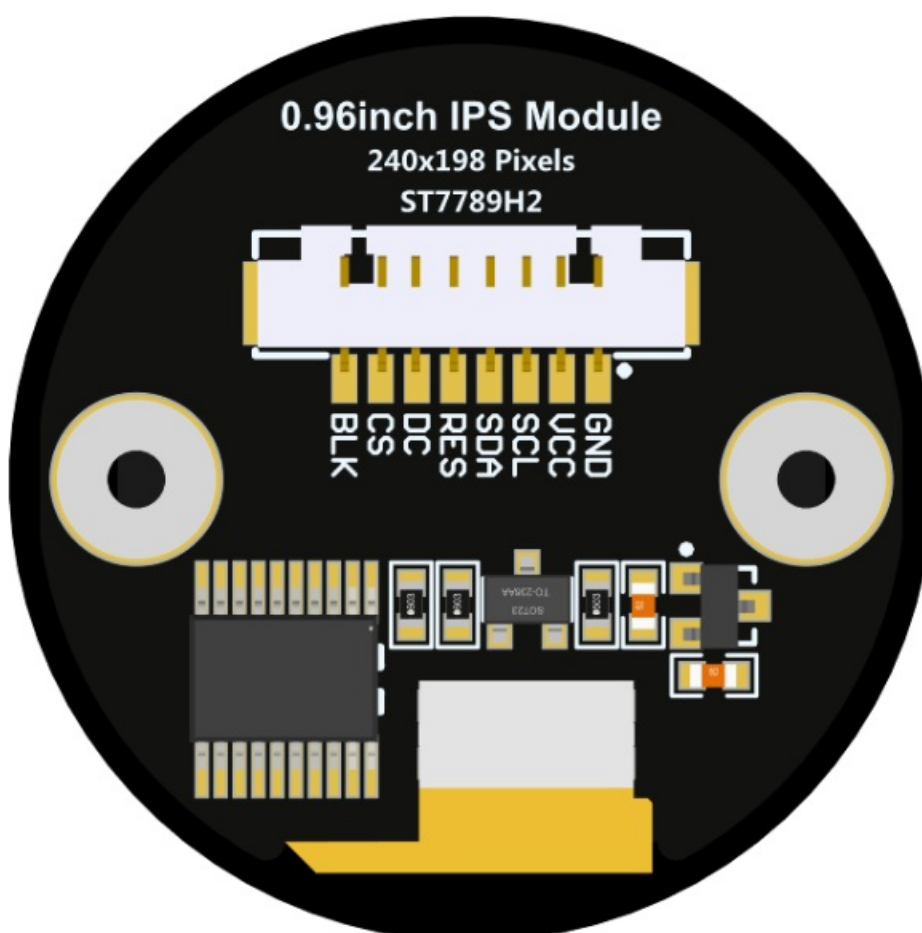
The resource directory is shown in the following figure:



Directory	Content Description
1-Demo	Contains sample programs and usage instructions for various platforms
2-Specification	Including LCD screen specifications, product specifications, and initialization of LCD screen driver IC
3-Structure_Diagram	Including product size structure documents
4-Driver_IC_Data_Sheet	Including LCD screen driver IC Datasheet and Touch Screen driver IC Datasheet
5-Schematic	Including product hardware schematic diagram, LCD Altium component diagram, and PCB packaging
6-User_Manual	Contains product user instructions document
7-Character&Picture_Molding_Tool	Contains image extraction software, character extraction software, and software usage instructions. The image and text display tests in the sample program require the use of this two software for mold taking.

Interface Description

The interface on the back of the module is shown in the following figure:



Number	Module Pin	Pin Function Description
1	GND	LCD Power ground
2	VCC	LCD power positive(It is recommended to connect to 5V. When connected to 3.3V, the backlight brightness will be slightly dim)
3	SCL	LCD SPI bus clock signal
4	SDA	LCD SPI bus writes data signal
5	RES	LCD reset control signal, Low-level reset
6	DC	LCD command/data selection control signal High level: data, low level: comm and
7	CS	LCD selection control signal, Low level active
8	BLK	LCD backlight control signal (If you need control, please connect the pins. If you don't need control, you can skip it)

Working principle

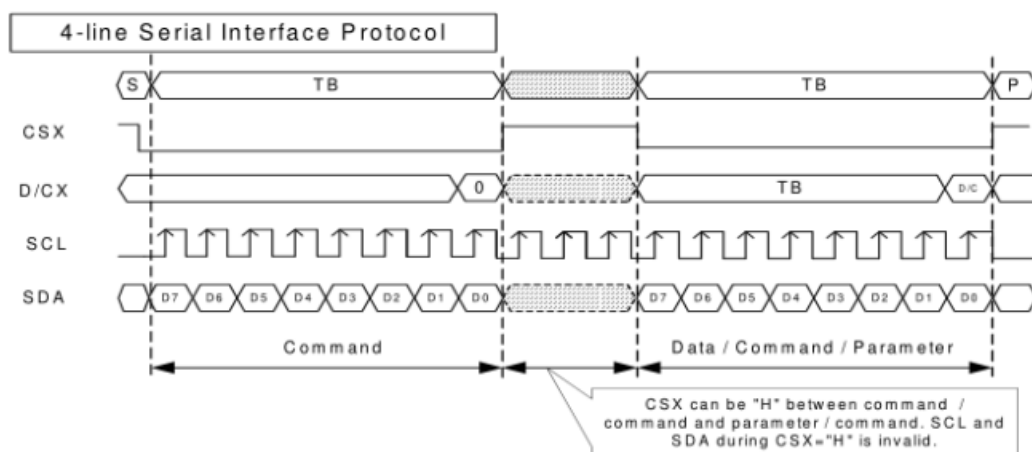
Introduction to ST7789H2 Controller

The ST7789H2 controller supports a maximum resolution of 240 * 320 and has a GRAM of 172800 bytes in size. Simultaneously supports 8-bit, 9-bit, 16-bit, and 18-bit parallel port data buses, as well as 3-wire and 4-wire SPI serial ports. Due to the large number of IO ports required for parallel control, SPI serial port control is the most commonly used. ST7789H2 also supports 65K and 262K RGB color display, with rich display colors. It also supports rotation and scrolling display, as well as video playback, with various display methods.

The ST7789H2 controller uses 16bit (RGB565) to control the display of one pixel, so each pixel can be displayed display up to 65K colors. The pixel address is set in the order of rows and columns, with the increasing and decreasing direction determined by the scanning method fixed. The ST7789H2 display method follows the process of setting the address first and then setting the color value.

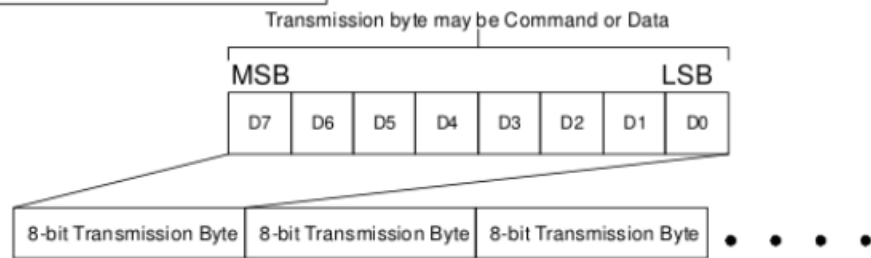
Introduction to SPI Communication Protocol

The writing mode timing of the 4-wire SPI bus is shown in the following figure:



- CSX is a slave chip selection, and the chip will only be enabled when CSX is at low power level.
- D/CX is the data/command control pin of the chip. When DCX is writing commands at low levels, data is written at high levels
- SCL is the SPI bus clock, with each rising edge transmitting 1 bit of data; SDA is the data transmitted by SPI, which transmits 8 bits of data at once. The data format is shown in the following figure:

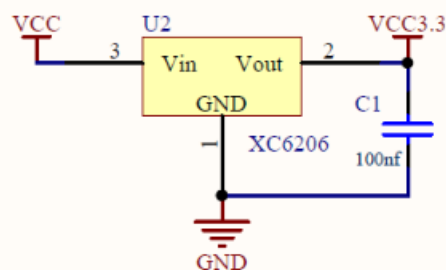
Data Format for 4-line Serial Interface



- High bit first, transmit first.
- For SPI communication, data has a transmission timing, with a combination of real-time clock phase (CPHA) and clock polarity (CPOL):
- The level of CPOL determines the idle state level of the serial synchronous clock, with CPOL=0, indicating a low level. CPOL pair transmission protocol
- The discussion did not have much influence;
- The height of CPHA determines whether the serial synchronous clock collects data on the first or second clock jump edge,
- When CPHL=0, perform data collection at the first transition edge;
- The combination of these two forms four SPI communication methods and SPI0 is commonly used in China, where CPHL=0 and CPOL=0

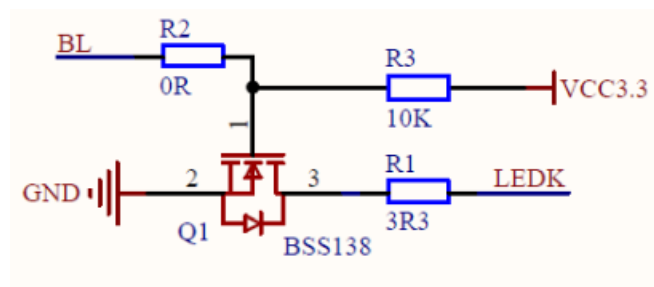
Hardware Description

Power supply voltage stabilizing circuit



This circuit is used to stabilize the input voltage of the module, where VCC is the external input voltage, VCC3.3V is the module input voltage, and C1 is the bypass filter capacitor. VCC can be connected to 5V or 3.3V, and it is recommended to connect to 5V because only by connecting to 5V can VCC3.3 output 3.3V. If connected to 3.3V, VCC3.3 output voltage will be less than 3.3V, which will cause the backlight brightness of the LCD screen to darken.

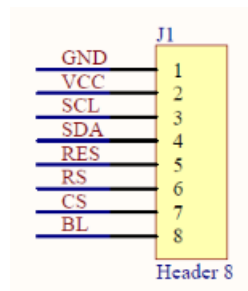
Backlight control circuit



R2 is reserved for compatibility with J3Y control circuits, directly using a 0-ohm resistor. R1 is the backlight current limiting resistor, R3 is the pull-up resistor, and Q1 is the BSS138 N channel field effect transistor. LED is the control signal, and LEDK is connected to the negative pole of the backlight. When the LED is suspended (without

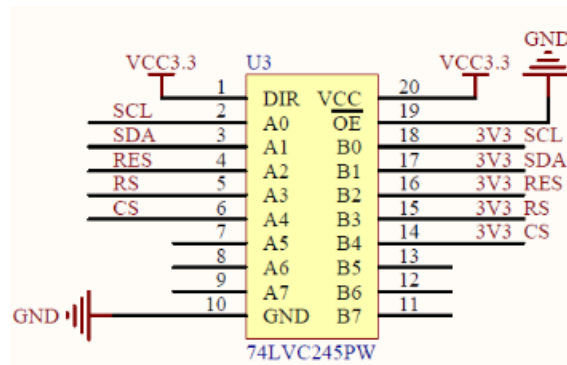
a control signal), due to R3 pull-up, the source of BSS138 is at a high level, with its gate and drain conducting, LEDK grounded, and the backlight circuit conducting, thus turning on the light. When the LED input is low, the source of BSS138 is low, its gate and drain are cut off, LDEK is suspended, and the backlight circuit is cut off, thus turning off the light; When the LED input is at a high level, the source of BSS138 is at a high level, its gate and drain are conductive, LDEK is grounded, and the backlight circuit is conductive, thus turning on the light;

8P slot interface



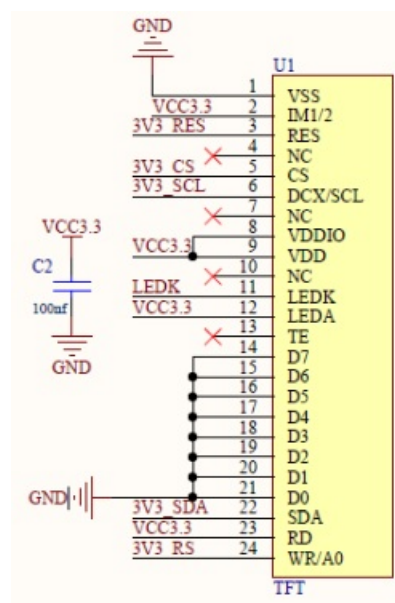
J1 is an 8P slot interface that requires a DuPont cable with a 1.25mm spacing and connectors to be connected.

Control signal level conversion circuit



U3 is a level conversion IC that converts between 5V and 3.3V. This circuit only uses the unidirectional function of 5V to 3.3V, and the 5V or 3.3V level signals input by the main control are converted through this circuit and then output to the LCD screen.

24P LCD screen connector interface



U1 is a 24P narrow spacing (0.4mm) double-row connector base. It is used to connect to the FPC cable of the LCD, so that the LCD can receive signals from the main control. C2 is the bypass filter capacitor of the LCD power supply.

Example program usage instructions

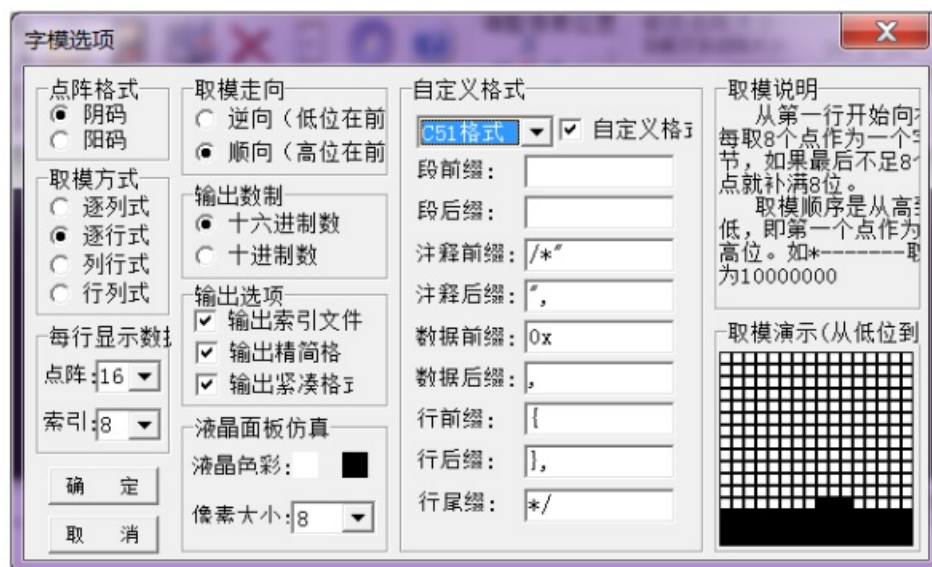
For specific instructions, please refer to the example program usage instructions document in the example program directory.

- **A.** Connect the display module to the main control board (directly plugin, use DuPont cable or FPC cable connection);
- **B.** Connect the main control board to the PC (it needs to be connected according to the download method) and power on the main control board;
- **C.** Modify, compile, and download sample programs;
- **D.** Check the display of the module and check if the program runs successfully;

Common tool software

The example program needs to display both Chinese and English, symbols, and images, so it requires the use of mold-taking software. There are two types of mold-taking software: Image2Lcd and PCtoLCD2002. Image2Lcd is used for color image extraction, while PCtoLCD2002 is used for text or monochrome image extraction.

- The PCtoLCD2002 mold taking software is set as follows:
 - Dot Matrix Format Selection Yin Code
 - Select row by row mode for mold taking
 - Select the direction of the mold taking direction in the clockwise direction (with the higher position in front)
 - Output Number System Selection Hexadecimal Number
 - Custom Format Selection C51 Format




The Image2Lcd mold taking software settings are shown in the following figure:



The Image2Lcd software needs to be set to scan horizontally, from left to right, from top to bottom, and with high bits in front.

Documents / Resources

	<p>Elecrow MSP0962 0.96inch IPS TFT SPI Display Module [pdf] User Manual</p> <p>MSP0962 0.96inch IPS TFT SPI Display Module, MSP0962, 0.96inch IPS TFT SPI Display Module, IPS TFT SPI Display Module, TFT SPI Display Module, SPI Display Module, Display Module, Module</p>
---	---

References

- [User Manual](#)

[Manuals+.](#) [Privacy Policy](#)

This website is an independent publication and is neither affiliated with nor endorsed by any of the trademark owners. The "Bluetooth®" word mark and logos are registered trademarks owned by Bluetooth SIG, Inc. The "Wi-Fi®" word mark and logos are registered trademarks owned by the Wi-Fi Alliance. Any use of these marks on this website does not imply any affiliation with or endorsement.