



**CM4 Display Pi  
Terminal**



# ELECROW CM4 Display Pi Terminal User Manual

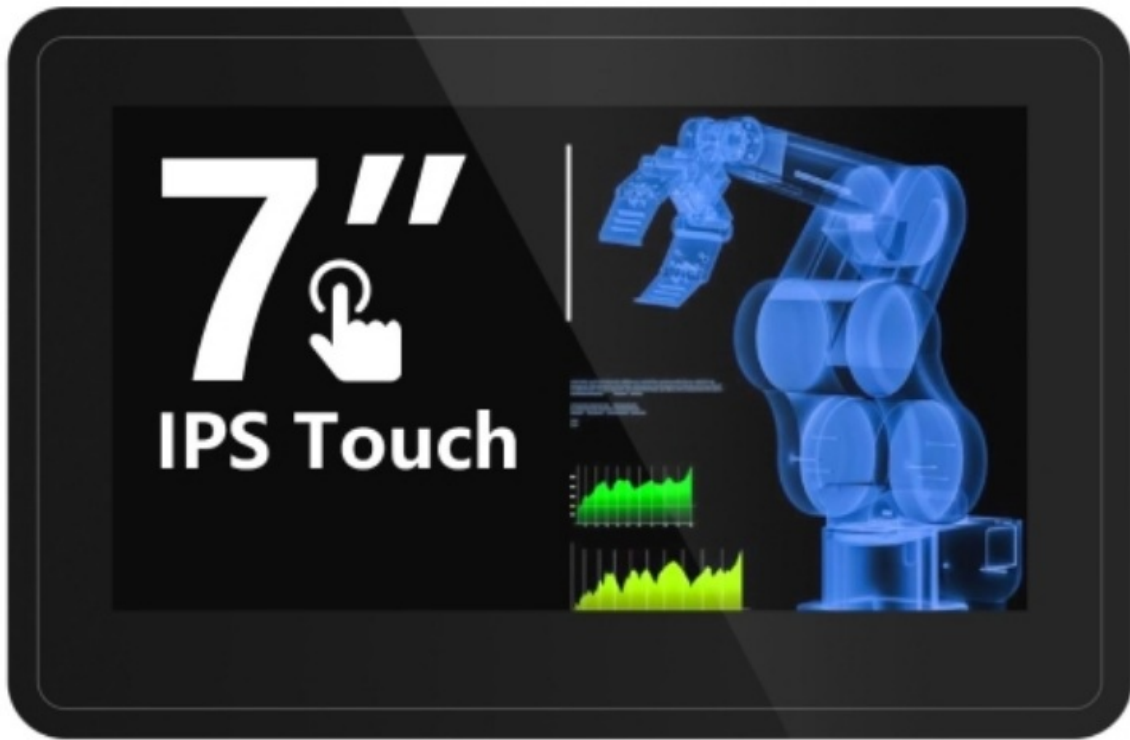
[Home](#) » [ELECROW](#) » ELECROW CM4 Display Pi Terminal User Manual 

## Contents

- [1 ELECROW CM4 Display Pi Terminal](#)
- [2 Overview](#)
- [3 Interface](#)
- [4 Pin and Indicator Definition](#)
- [5 Specification](#)
- [6 Installation](#)
- [7 Package List](#)
- [8 Customer Support](#)
- [9 Documents / Resources](#)
  - [9.1 References](#)



**ELECROW CM4 Display Pi Terminal**

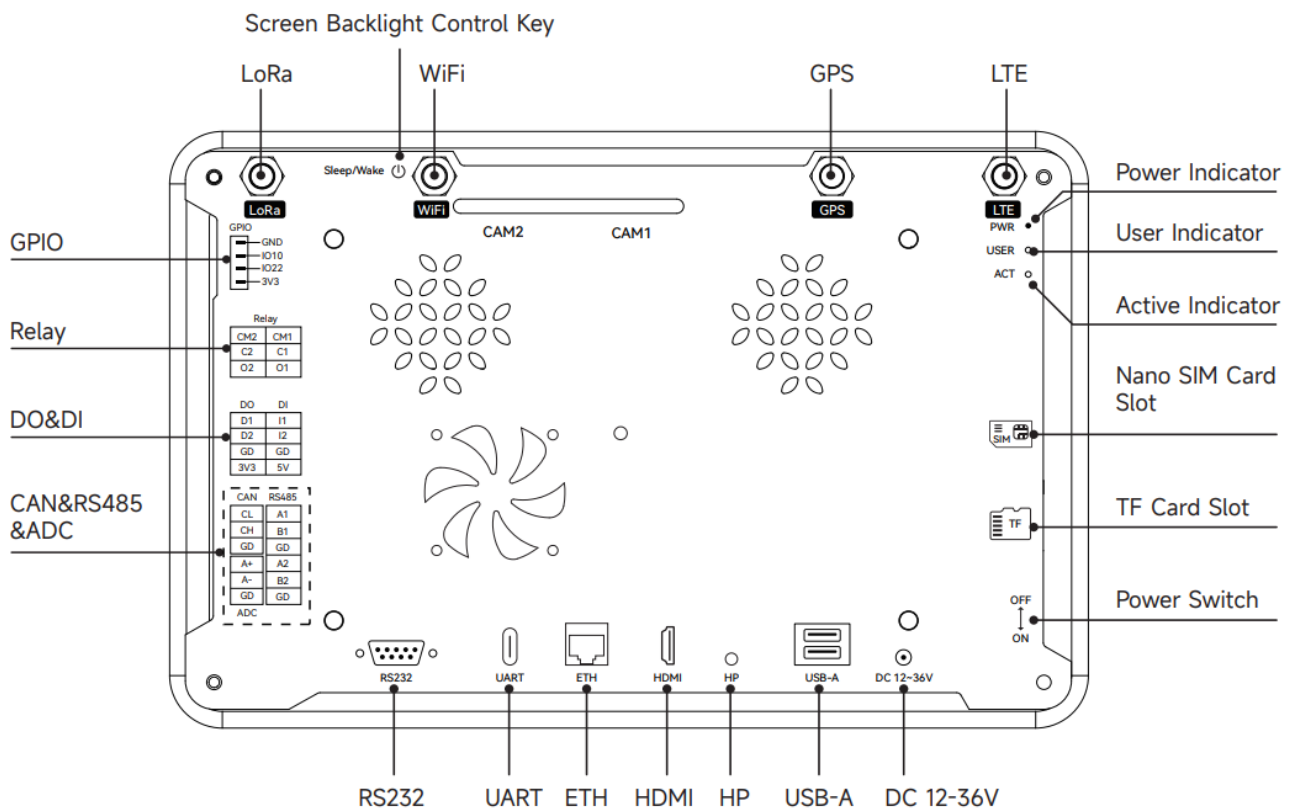


## Overview

CM4 Display is a multi-functional embedded industrial control device designed based on the Raspberry Pi platform. Equipped with a 7-inch capacitive screen, it has multiple industrial interfaces and supports multiple wireless communication protocols. By using the CM4 as the main controller, it quickly handles real-time control tasks and monitors ongoing operations. Its industrial design allows it to withstand harsh environments. The CM4 Display integrates with Node-RED, which is compatible with the software running on the Raspberry Pi and pre-installed Raspbian system. Using an all-in-one design, it boasts a robust open-source ecosystem tailored for various industry applications.

## Interface

Note: The acrylic case needs to be purchased separately



## Pin and Indicator Definition

Relay			
COM2	CM2	CM1	COM1
NC2	C2	C1	NC1
NO2	O2	O1	NO1

DO		DI	
DO1	D1	I1	DI1
DO2	D2	I2	DI2
GNDO	GD	GD	GNDI
3.3V	-3V3	5V	5V

CAN		RS485	
CANL	CL	A1	485A1+
CANH	CH	B1	485B1-
GND	GD	GD	485GND
ADC+	A+	A2	485A2+
ADC-	A-	B2	485B2-
GND	GD	GD	485GND
ADC			

**PWR** ● CM4 Power Indicator  
 -----  
**USER** ○ User-defined Function Indicator  
 -----  
**ACT** ○ CM4 Status Indicator

## Specification

### Specification-1

#### CM4 Processor

CPU	Broadcom BCM2711, quad core Cortex-A72 (ARM v8) 64-bit SoC @ 1.5GHz
Flash	4GB
Storage	64GB TF Card or SSD (Optional)
System	Raspbian Compatible with Node-RED

## Display

Size	7"
Resolution	1024*600
Luminance	450 cd/m2
Touch Type	5-point capacitive touch

## Wireless Communication

WiFi	2.4/5.0 GHz on CM4
Bluetooth	BLE 5.0 on CM4
LoRa	Mini-PCle socket (Optional)
LTE	Mini-PCle socket (Optional)

## Specification-2

### Edge Interfaces

2*20Pin Header	Before referencing CM4 resources, please confirm whether the resources have been reused
CAM*2	MIPI CSI camera interface, compatible with all camera specifications of Raspberry Pi
GPIO	GND/GPIO10/GPIO22/3.3V, extend custom functions and connect to the button board to use custom functions
Relay	2*3Pin, control the relay switch through high and low voltage levels
DO&DI	2*4Pin, support two digital input and two digital output channels
CAN&RS485&ADC	2*6Pin, RS485 occupies six pins, CAN occupies three pins, and ADC occupies three pins
RS232	DB9 interface, reserve external industrial non-isolated serial port
UART (Type-C)	USB2.0. USB to UART. Connect to USB device
ETH	RJ45 interface. 10/100/1000Mbps. Used for connecting to Ethernet or other local area networks

## Specification-3

## Edge Interfaces

HDMI	HDMI2.0. Used for video output. Support video output up to 4K @ 60 fps
HP	3.5mm audio jack. Used for connecting headphone or microphone
USB-A*2	USB-A 2.0. Used for connecting USB devices
DC 12-36V	Used for powering the device
TF Card Slot	64GB TF card. Press the card to insert or eject it from the slot
Nano SIM Card Slot	Insert a Nano SIM card and pair it with a 4G module to provide 4G cellular data communication for the device
2*4Pin Header	Used for expanding the USB interface

## Other Interfaces

PoE	Power CM4
Fan	Connect the fan to dissipate heat
SPK*2	Connect the speakers for sound output

## Specification-4

### Environmental Spec

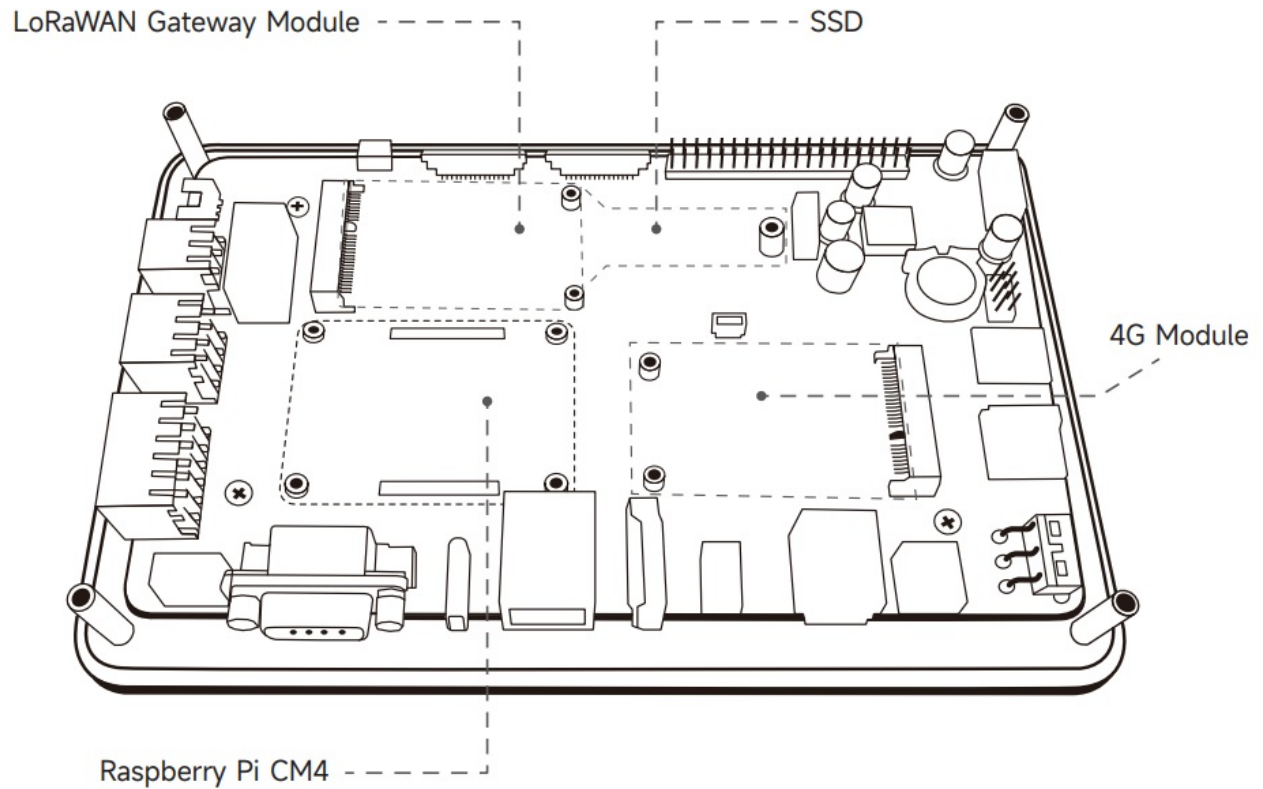
Front Panel IP Rating	IP65
Operating Temperature	-10~60°C
Storage Temperature	-20-70°C
Relative Humidity	10~90%

## Parameters

Front Glass Thickness	1.8mm
With acrylic case	
Dimension	192*125*46mm
Net Weight	676g
Without acrylic case	
Dimension	182*115*29mm
Net Weight	389g

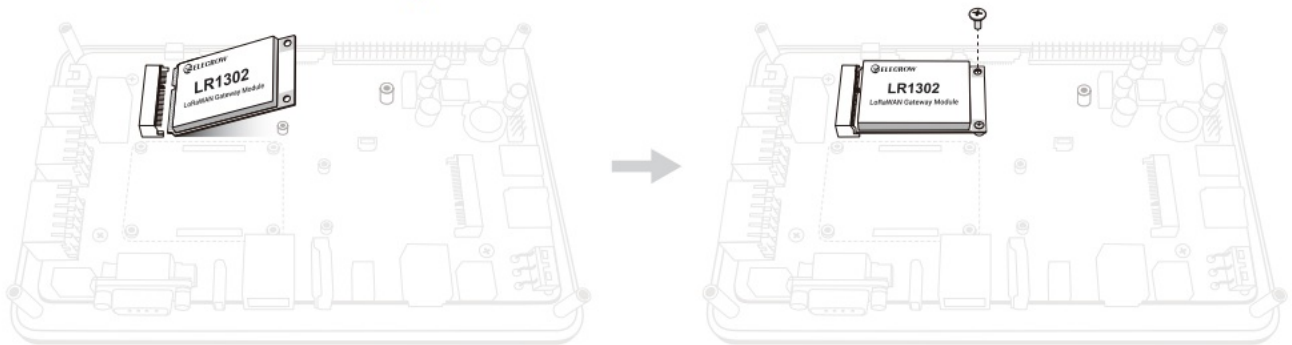
## Installation

## Installation-1

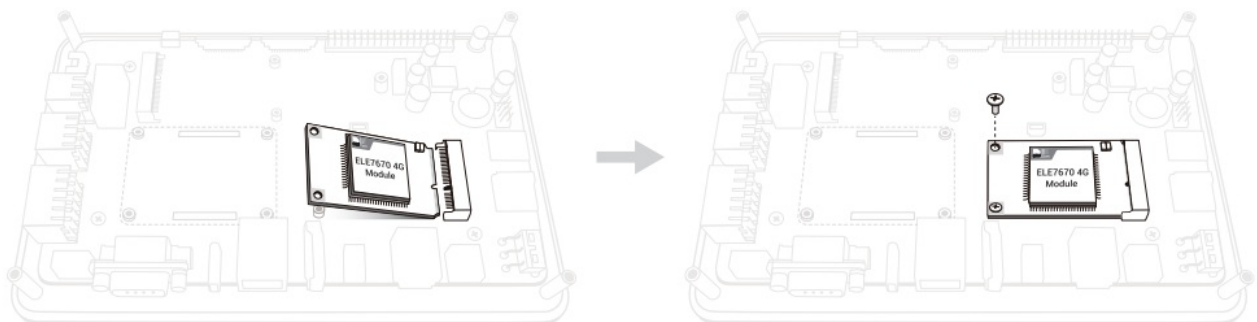


## Installation-2

- Installation of LoRaWAN Gateway Module

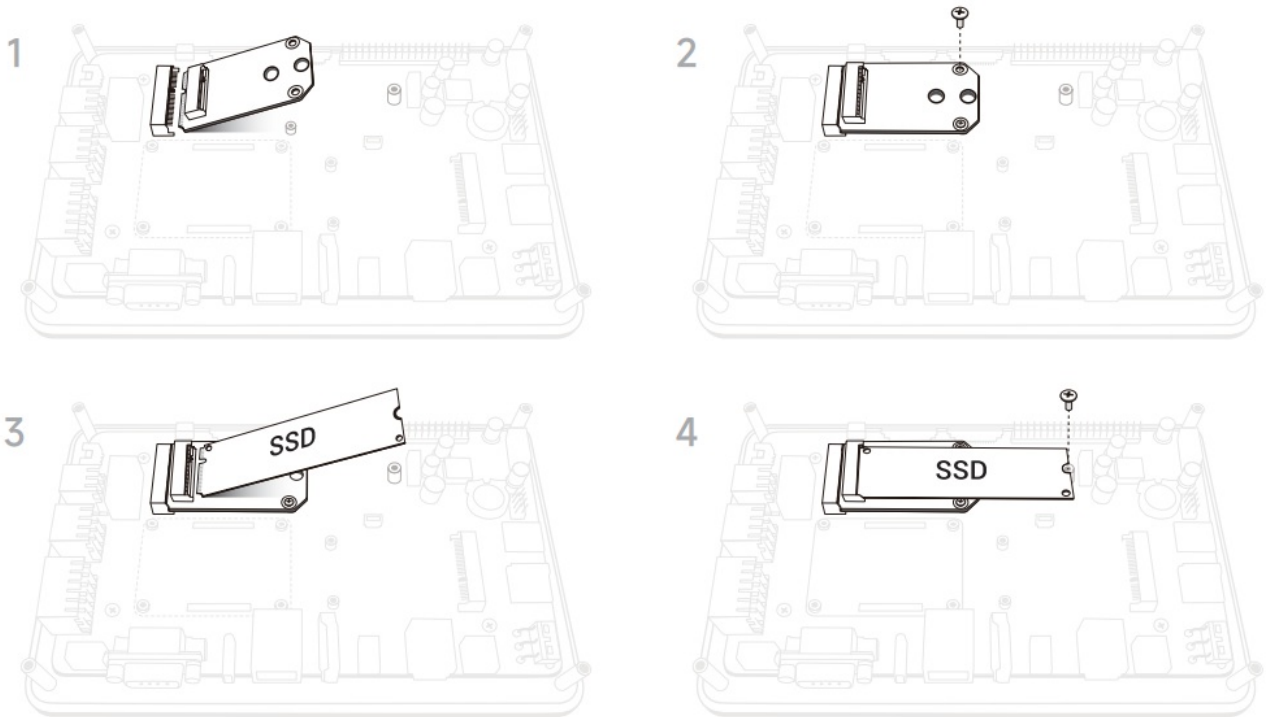


- Installation of 4G Module



## Installation-3

### Installation of SSD



Please insert the module at a 45° angle and then tighten the screws to lock it in place.

## Package List

### Package List \*Without Acrylic Case

- CrowPanel-CM4 Display\*1 (Optional Acrylic Case)
- Inserted 64GB TF Card\*1 (Image File Loaded)
- IPEX to SMA Female Adapter Cable\*1
- 2\*3Pin Phoenix Type Connector\*1
- 2\*4Pin Phoenix Type Connector\*1
- 2\*6Pin Phoenix Type Connector\*1
- WiFi External Antenna\*1
- 12V-2A Adapter\*1
- User Manual\*1

## Customer Support

you have any questions, customer support is always standing by

- [info@elecrow.com](mailto:info@elecrow.com)
- [techsupport@elecrow.com](mailto:techsupport@elecrow.com)

For more technical details, please visit the relevant webpage.

## Documents / Resources



## [ELECROW CM4 Display Pi Terminal](#) [pdf] User Manual

CM4 Display Pi Terminal, CM4, Display Pi Terminal, Pi Terminal, Terminal

## References

- [User Manual](#)

[Manuals+](#), [Privacy Policy](#)

This website is an independent publication and is neither affiliated with nor endorsed by any of the trademark owners. The "Bluetooth®" word mark and logos are registered trademarks owned by Bluetooth SIG, Inc. The "Wi-Fi®" word mark and logos are registered trademarks owned by the Wi-Fi Alliance. Any use of these marks on this website does not imply any affiliation with or endorsement.