



ELECROW Bolt-Programmable Smart Robot Car STEAM Robot Kit Instruction Manual

[Home](#) » [ELECROW](#) » ELECROW Bolt-Programmable Smart Robot Car STEAM Robot Kit Instruction Manual 

Contents

- [1 ELECROW Bolt-Programmable Smart Robot Car STEAM Robot Kit](#)
- [2 Product Information](#)
- [3 Product Usage Instructions](#)
- [4 ASSEMBLY INSTRUCTIONS](#)
- [5 INSTALLATION](#)
- [6 Instructions for Factory Procedures](#)
- [7 Documents / Resources](#)



ELECROW Bolt-Programmable Smart Robot Car STEAM Robot Kit



Product Information

The product is called CrowBot and it is an electronic robot that can perform multiple functions such as ultrasonic obstacle avoidance, line tracking, light chasing, and music playing. It comes with a tracking map, joystick for control, assembly instructions, and various parts including an OLED screen, joystick board, top and bottom acrylics and screws. The product is designed for educational purposes and is suitable for STEAM education. It requires two AAA batteries (not included) for operation. The product contains small parts and is not recommended for children under 3 years of age. Children should only use the product under adult supervision. For more information and help, customers can visit the website <https://www.elecrow.com/>.

Product Usage Instructions

- **Step 1:** Prepare the product by gathering all the parts included in the package. This includes the OLED screen, joystick board, top and bottom acrylics, screws, and screwdriver. Also, prepare the two AAA batteries (not included).
- **Step 2:** Install the OLED screen by tearing off the bottom sticker and attaching it to the joystick board.
- **Step 3:** Assemble the top and bottom acrylics using the M3x8mm screws and M3x9mm copper columns. Use the screwdriver to tighten the screws.
- **Step 4:** Insert the joystick board into the assembled acrylics and secure it using the M3x8mm screws and M3x9mm copper columns.
- **Step 5:** Install the two AAA batteries into the battery compartment located on the bottom acrylic.
- **Step 6:** Finish assembling the product by attaching the button caps to the front and top acrylics. The product is

now ready to use.

- **Step 7:** To operate the product, turn on the light using the left button. The buzzer will sound to indicate that the product is ready. Use the omnidirectional lever to move the robot forward or backward and turn left or right. Press the A button to cancel a program. The product can perform various functions such as ultrasonic obstacle avoidance, line tracking, light chasing, and music playing by pressing the corresponding buttons (B, C, D).

ASSEMBLY INSTRUCTIONS



Explore Electronic World

For more product information and help, please visit the website. <https://www.elecrow.com> **WARNING** Small parts Not for kids under 3 years Children to use only under adult supervision.

INSTALLATION

1. Preparation



Joystick Board x1



Top Transparent Acrylic x1



Bottom Acrylic x1



OLED Screen x1



ø13x8.2mm Button Cap x4



M3x9mm Copper Column x4



AAA Battery x2
(not included)



M3x8mm Screw x8

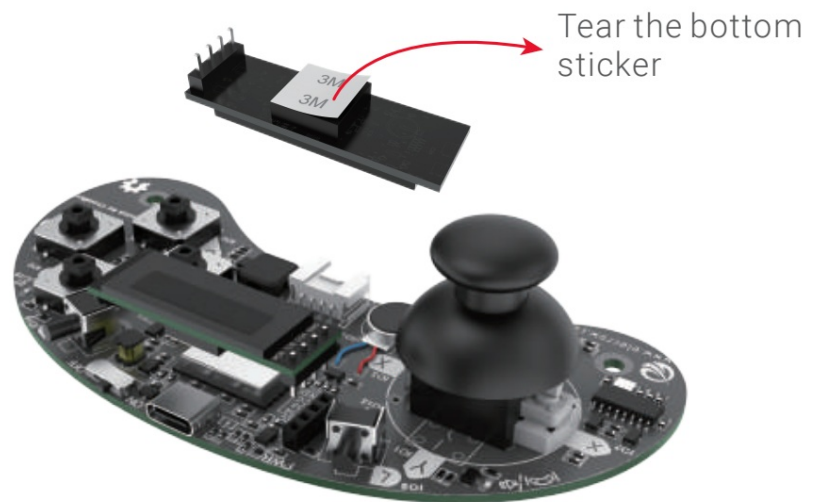
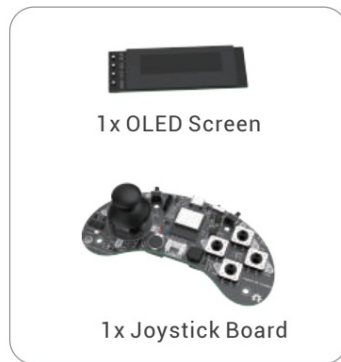


ø6x6mm Button Cap x2



Screwdriver x1

2. OLED Screen



3. Top Button Cap



4. Front Button Cap



5. Bottom Acrylic



Bottom Acrylic x1



M3x8mm Screw x4



M3x9mm Copper
Column x4



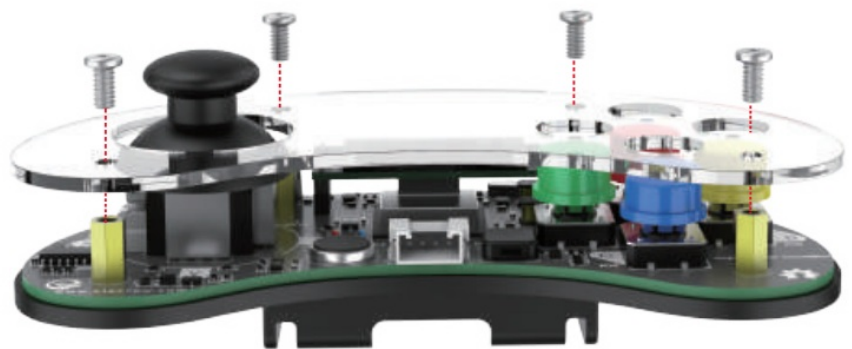
6. Top Acrylic



M3x8mm Screw x4



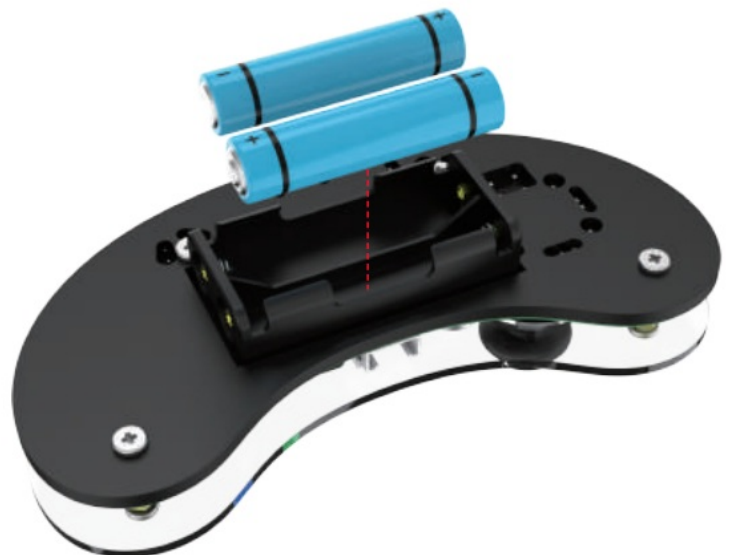
Top Transparent
Acrylic x1



7. Battery



AAA Battery x2
(not included)



8. Finish



Front



Back


Instructions for Factory Procedures



Notice

- Preset infrared remote controller functions. If you reload other programs, the above functions will be invalid.
- If you need, visit the product link or contact customer service to ask for this factory setting program.

Documents / Resources

	ELECROW Bolt-Programmable Smart Robot Car STEAM Robot Kit [pdf] Instruction Manual Bolt-Programmable Smart Robot Car STEAM Robot Kit, Programmable Smart Robot Car STEAM Robot Kit, Smart Robot Car STEAM Robot Kit, Car STEAM Robot Kit, STEAM Robot Kit, Robot Kit, Kit
---	---