




ELECOM M-S2UL Wired Mouse User Manual

[Home](#) » [ELECOM](#) » ELECOM M-S2UL Wired Mouse User Manual 

ELECOM

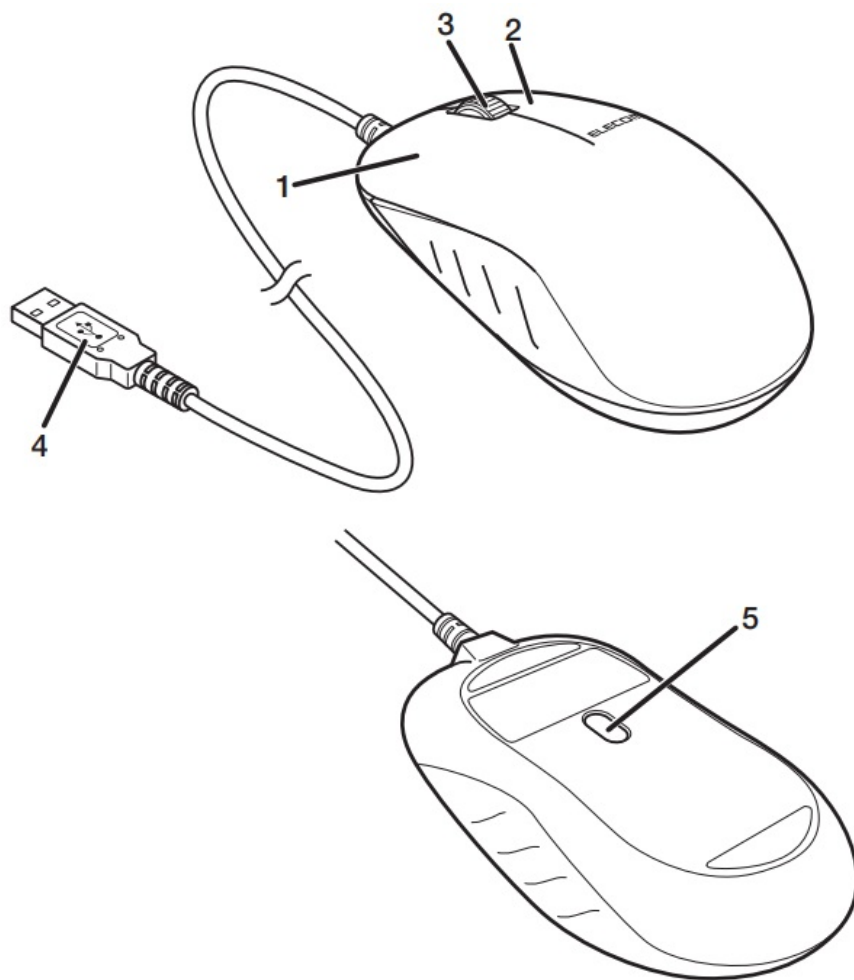
Model: M-S2UL, S2UL
Wired Mouse
Manual

Contents

- [1 Name and function of each part](#)
- [2 Connecting to a PC](#)
- [3 Specifications](#)
- [4 Safety Precautions](#)
- [5 Cleaning the Product](#)
- [6 Cautions for Laser Mouse](#)
- [7 Limitation of Liability](#)
- [8 Documents / Resources](#)
- [9 Related Posts](#)

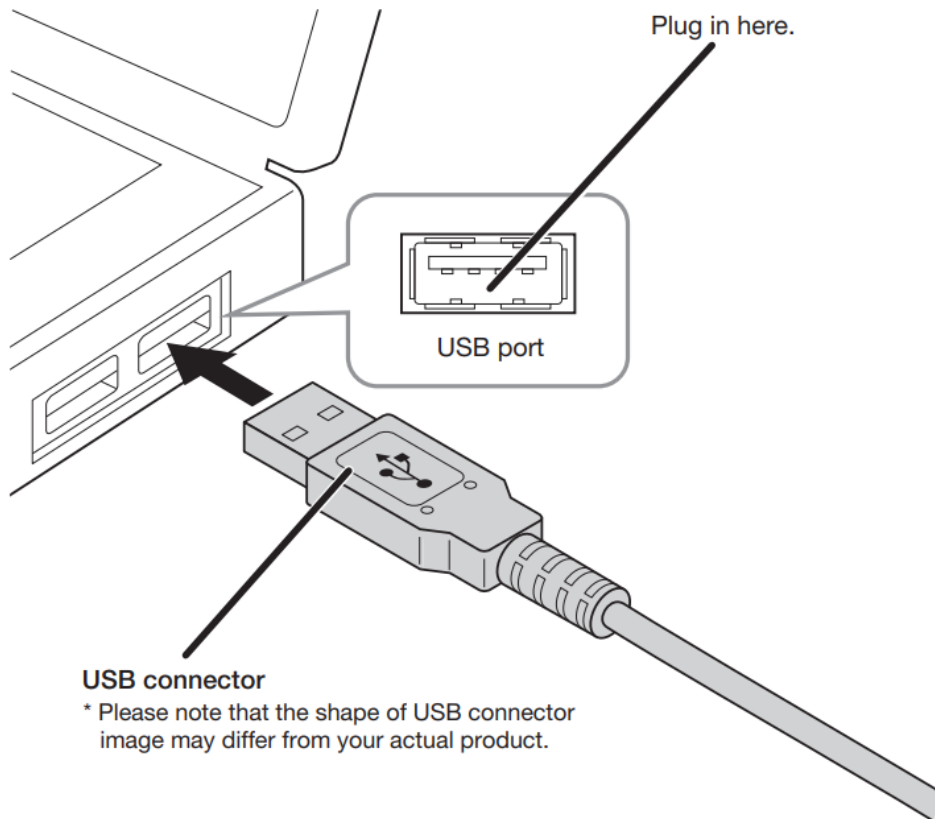
Name and function of each part

* Please note that the shape of mouse image may differ from your actual product.



1. Left button
2. Right button
3. Wheel
4. USB connector (male)
5. Laser sensor

Connecting to a PC



1. Start the PC.

Start the PC, and then wait for it to be ready to perform operations.

2. Insert the USB connector of the product into a USB port on the PC.

Any USB port may be used.



- Be sure to sufficiently check the connector orientation and the insertion location.
- If you feel a strong resistance when inserting the USB connector, check that the shape and orientation of the connector is correct.

- Using excessive force may damage the connector and cause injury.
- Do not directly touch the terminal area of the USB connector.

3. The driver will be automatically installed, and you will then be able to use the mouse.

Specifications

Supported OS	Windows® 8.1, Windows® RT 8.1, Windows® 7, Windows Vista® , Windows® XP, Mac OS 10.6, OS X10.7 ~ 10.9, PlayStation® 3 (Update for each new version of the OS or the installation of a service pack might be required.)
Resolution	1600 dpi
Interface	USB
Dimensions (W × D × H)	approx. 60 × 105× 40 (mm)
Cable length	approx. 1.5 m
Operating temperature/ humidity	5°C to 40°C/90%RH or less (without condensation)
Storage temperature/ humidity	-10°C to 60°C/90%RH or less (without condensation)

Safety Precautions



Prohibited action



Mandatory action



Situation that needs attention



WARNING



If a foreign object (water, metal chip, etc.) enters the product, immediately stop using the product, remove the product from the PC. If you continue to use the product under these conditions, it may cause a fire or electric shock.



If the product is behaving abnormally, such as by generating heat, smoke, or a strange smell, immediately stop using the product, shut down the PC, and then sufficiently check whether the product is generating heat while being careful to avoid being burned. Then, remove the product from the PC. After that, contact the retailer from whom you purchased the product. Continuing to use the product under these conditions may cause a fire or electric shock.



Do not drop the product or otherwise subject it to impacts.

If this product is damaged, immediately stop using it, remove the product from the PC. After that, contact the retailer from whom you purchased the product.

Continuing to use the product while it is damaged may cause a fire or electric shock.



Do not attempt to disassemble, modify or repair this product by yourself, as this may cause a fire, electric shock or product damage.



Do not put this product in fire, as the product may burst, resulting in a fire or injury.



Do not insert or remove the connector with wet hands. Also, do not make alternations to or forcefully bend the connector.



Doing so may cause a fire or electric shock.



CAUTION



Do not place this product in any of the following environments:

- In a car exposed to sunlight, a place exposed to direct sunlight, or a place that becomes hot (around a heater, etc.)
- In a moist place or a place where condensation may occur
- In an uneven place or a place exposed to vibration
- In a place where a magnetic field is generated (near a magnet, etc.)
- In a dusty place



This product does not have a waterproof structure.

Use and store this product in a place where the product body will not be splashed with water or other liquid. Rain, water mist, juice, coffee, steam or sweat may also cause product damage.



Avoid looking directly at the light of the optical sensor as doing so may cause eye damage.



Only use this product with PCs and video game systems.



Do not use this product with any device that may significantly be affected in the case of this product malfunctioning.



If this product is not going to be used for one month or longer, remove it from the PC.



When you no longer need to use this product and the battery, be sure to dispose of them in accordance with the local ordinances and laws of your area.

Cleaning the Product

If the product body becomes dirty, wipe it with a soft, dry cloth.



Use of a volatile liquid (paint thinner, benzene, alcohol, etc.) may affect the material quality and color of the product.

Cautions for Laser Mouse

Though this product complies with the IEC60825-1 Class 1 laser safety standard to ensure safety, pay special attention to the following before use.

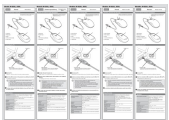
- Never observe the laser beam by using an optical measure such as a microscope or magnifier or view the laser with the naked eye for a long period of time. Doing so may have an adverse effect on the eye. (Some laser beams cannot be seen with the naked eye.)
- Never aim the rear surface of the mouse at a person's eyes, as this is very dangerous.
- The laser sensor may not work properly on glass or mirrors.

Limitation of Liability

- In no event will ELECOM Co., Ltd be liable for any lost profits or special, consequential, indirect, punitive damages arising out of the use of this product.
- ELECOM Co., Ltd will have no liability for any loss of data, damages, or any other problems that may occur to any devices connected to this product.

ELECOM

Documents / Resources



[ELECOM M-S2UL Wired Mouse](#) [pdf] User Manual
M-S2UL Wired Mouse, M-S2UL, Wired Mouse, Mouse