



ELECOM M-CAD01DB Wireless Mouse for 3D CAD 3 Button User Manual

[Home](#) » [ELECOM](#) » ELECOM M-CAD01DB Wireless Mouse for 3D CAD 3 Button User Manual 

ELECOM M-CAD01DB Wireless Mouse for 3D CAD 3 Button User Manual

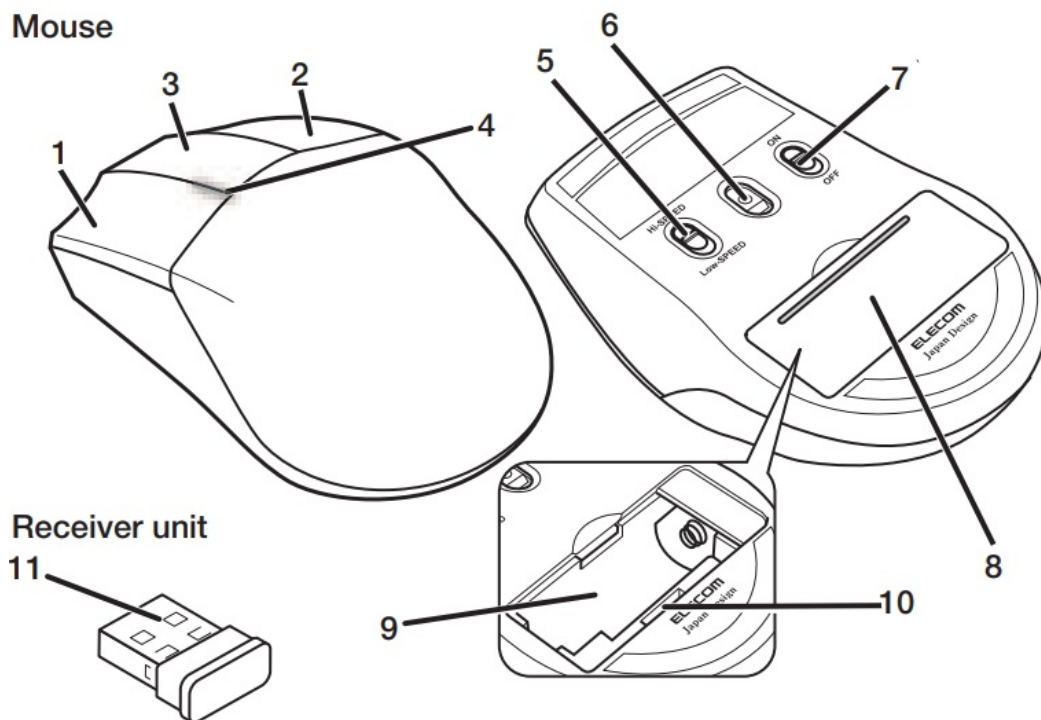


Contents

- 1 Name and function of each part
- 2 Insert the battery
- 3 Turning the Power On
- 4 Connecting to a PC
- 5 Specifications
- 6 Safety Precautions
- 7 Precautions on wireless
- 8 Limitation of Liability
- 9 Documents / Resources
 - 9.1 References
- 10 Related Posts

Name and function of each part

Mouse



1. Left button

To left click on your PC.

2. Right button

To right click on your PC

3. Middle button

To middle click on your PC.

4. LED light

When the power is turned on, the LED between the left and middle button will light up for a period of time.

When remaining battery becomes low during use, the LED blinks red.

5. Pointer speed change switch

To change the pointer speed.

HI-SPEED



Low-SPEED

HI-SPEED



Low-SPEED

Hi-SPEED: 1200 dpi

Low-SPEED: 600 dpi

6. Optical sensor



Please note that looking directly into the sensor light may hurt your eyes.

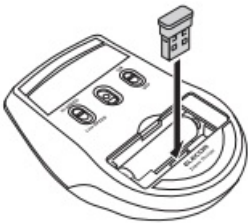
7. Power Switch

8. Battery cover

9. Battery-storage compartment

10. Receiver unit-storage compartment

The receiver unit can be stored here when the mouse is not in use.



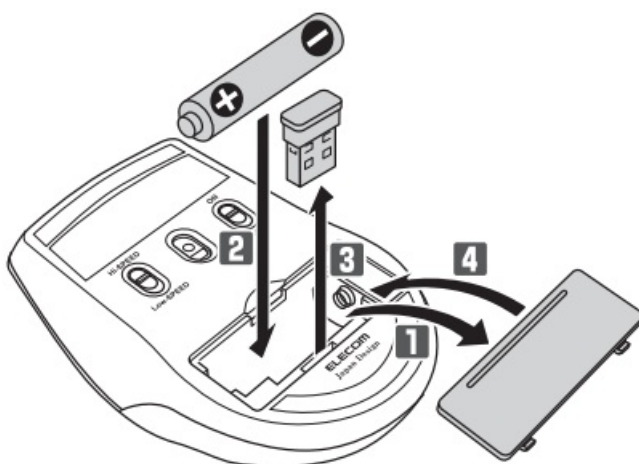
11. USB connector (male)



When removing the receiver unit

This product supports hot plugging. The receiver unit can be removed while the PC is on.

Insert the battery



1. Remove the battery cover.

2. Insert the batteries according to the instructions on the battery compartment.

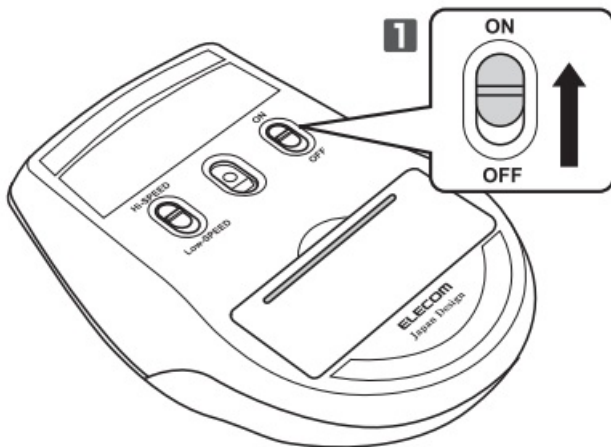


Insert with the correct battery plus and minus orientation.

3. Remove the receiver unit.

4. Re-attach the battery cover to its original state.

Turning the Power On

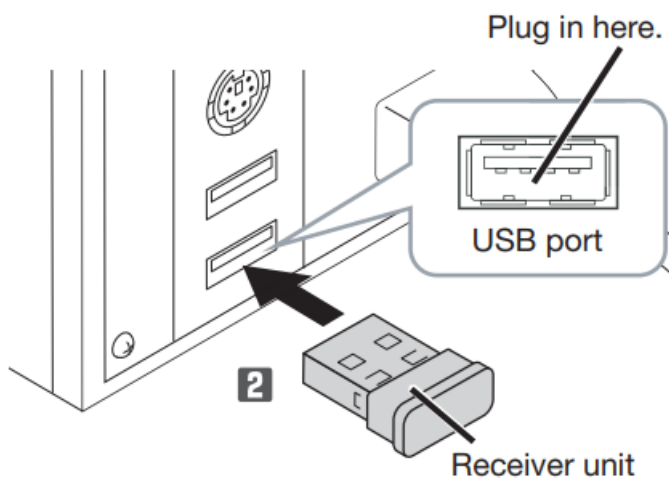


1. Slide the rear power switch to the ON position.

The LED lamp is lit red for a fixed time.

When remaining battery is low, the LED blinks red for a fixed time.

Connecting to a PC



1. Start the PC.
2. Insert the receiver unit into the PC's USB port.



- Be sure to sufficiently check the connector orientation and the insertion location.
 - If you feel a strong resistance when inserting the USB connector, check that the shape and orientation of the connector is correct. Using excessive force may damage the connector and cause injury.
 - Do not directly touch the terminal area of the USB connector.
3. The driver will be automatically installed, and you will then be able to use the mouse.

Specifications

Supported OS	<p>Windows® 10, Windows® 8.1, Windows® 7, Windows® XP (Updating the OS or installing a service pack may be necessary.)</p> <p>* Compatibility information was retrieved during operation confirmation in our verification environment. There is no guarantee of complete compatibility with all devices, OS versions, and applications.</p>
Resolution	600/1200 dpi (switchable)
Interface	USB
Radio frequency	2.4 GHz band
Radio wave method	GFSK
Radio wave range	<p>Non-magnetic materials (such as wooden desks): approximately 10 m Magnetic materials (such as iron desks): approximately 3 m</p> <p>* These are test values in company environment and are not guaranteed.</p>
Read method	Optical sensor method
LED	Blue
Dimensions (W × D × H)	<p>Mouse : approx. 71 × 110 × 38 (mm) / approx. 2.8 × 4.4 × 1.5 (inch)</p> <p>Receiver unit : approx. 15 × 18 × 6 (mm) / approx. 0.6 × 0.7 × 0.3 (inch)</p>
Operational temperature/humidity	5°C to 40°C/ up to 90%RH (without condensation)
Storage temperature/humidity	-10°C to 60°C/ up to 90%RH (without condensation)

Supported battery	Any one of AA alkaline battery, AA manganese battery, AA type nickel- metal hydride battery.
Operational time	<p>Estimate when using alkaline battery Continuous operation time: Approximately 210 hours Continuous standby time: Approximately 1041 hours Estimated usage time: Approximately 102 days (The above is assuming the computer is used for eight hours a day with 5% of that time spent operating the mouse.)</p> <p>* These are test values in company environment and are not guaranteed.</p>

Safety Precautions



Prohibited action



Mandatory action



Situation that needs attention



WARNING



If a foreign object (such as water and metal chip) enters the product, immediately stop using the product, remove the receiver unit from the PC, and remove the battery from the product. Continuing to use the product under these conditions may cause a fire or electric shock.



If the product is behaving abnormally, such as by generating heat, smoke, or a strange smell, immediately stop using the product, shut down the PC, and then sufficiently check whether the product is generating heat while being careful to avoid being burned. Then, remove the receiver unit from the PC and remove the battery from the product. After that, contact the retailer from whom you purchased the product. Continuing to use the product under these conditions may cause a fire or electric shock.



Do not drop the product, nor subject it to strong physical shocks. In the event of the product becoming damaged, immediately stop using the product, remove the receiver unit from the PC, and remove the battery from the product. After doing so, contact the retailer from whom you purchased the product. If you continue to use the product under these conditions, it may cause a fire or electric shock.



Do not attempt to disassemble, modify or repair this product by yourself, as this may cause a fire, electric shock or product damage.



Do not put this product in fire, as the product may burst, resulting in a fire or injury.



Do not insert or remove the receiver unit with wet hands. Also, do not make alternations to or forcefully bend

the receiver unit. Doing so may cause a fire or electric shock.



The receiver unit presents a swallowing hazard for children, so be sure to store it in a place out of the reach of children.



CAUTION



Do not place this product in any of the following environments:

In a car exposed to sunlight, a place exposed to direct sunlight, or a place that becomes hot (such as around a heater)

- In a moist place or a place where condensation may occur
- In an uneven place or a place exposed to vibration
- In a place where a magnetic field is generated (such as near a magnet)
- In a dusty place



This product does not have a waterproof structure. Use and store this product in a place where the product body will not be splashed with water or other liquid. Rain, water mist, juice, coffee, steam or sweat may also cause product damage.



Do not use this mouse for any purpose other than for use with your computer.



Do not use this product with any device that may significantly be affected in the case of this product malfunctioning.



If this product is used on a transparent surface such as glass or a highly reflective surface such as a mirror, the optical sensor will not function correctly and the mouse pointer movement will become unstable.



If this mouse is not going to be used for one month or longer, remove the receiver unit from the PC.



Avoid looking directly at the light of the optical sensor as doing so may cause eye damage.



When you no longer need to use this product, be sure to dispose of them in accordance with the local ordinances and laws of your area.

Battery



For this product, use AA alkaline battery, AA manganese battery, or AA type nickel-metal hydride rechargeable battery.



When not using this product for long periods of time, remove the battery. This may cause fluid leak or malfunction.

Cleaning the Product

If the product body becomes dirty, wipe it with a soft, dry cloth.



Use of a volatile liquid (such as paint thinner, benzene, alcohol) may affect the material quality and color of the product.

Precautions on wireless

This product is a wireless device that can use the entire 2.4 GHz band, and is able to avoid the mobile entity identification device range. The GFSK method is adopted as the radio wave method, and the interference distance is 10m. The 2.4 GHz band is also used in medical devices and wireless LAN devices of the IEEE 802.11b/11g/11n standards.



WARNING



- Do not use with equipment which may cause serious consequences. There are rare cases in which an external radio wave at the same frequency, or the radio wave emitted from a mobile phone, causes this product to malfunction, slow down, or fail to operate.
- Do not use this product in places where radio wave usage is prohibited, such as hospitals. Radio waves of this product may affect electronic devices and medical devices (for example pacemakers).
- Due to the possibility of hindering safe navigation of aircraft, use of wireless mice in aircraft is prohibited by the Civil Aeronautics Act. Turn off the power of the wireless mice before boarding and do not ever use after boarding.

Please note that we can not assume any responsibility, even if events such as an accident or social damage occur due to a failure of this product.

Limitation of Liability

- In no event will ELECOM Co., Ltd be liable for any lost profits or special, consequential, indirect, punitive damages arising out of the use of this product.
- ELECOM Co., Ltd will have no liability for any loss of data, damages, or any other problems that may occur to any devices connected to this product.

Compliance status www.elecom.co.jp/global/certification/



FCC ID: YWO-M-CADO1UB

This device complies with Part 15 of the FCC Rules. Operation is subject to the following two conditions:

1. this device may not cause harmful interference, and
2. this device must accept any interference received, including interference that may cause undesired operation.

NOTE; This equipment has been tested and found to comply with the limits for a Class B Digital Device, pursuant to part 15 of the FCC Rules. These limits are designed to provide reasonable protection against harmful interference in a residential installation. This equipment generates, uses and can radiated radio frequency energy and, if not installed and used in accordance with the instruction, may cause harmful interference to radio communication. However, there is no grantee that interference will not occur in a particular installation. If this equipment does cause harmful interference to radio or television reception, which can be determined by tuning the equipment off and on, the user is encouraged to try to correct the interference by one or more of the following measures:

- Reorient or relocate the receiving antenna.
- Increase the separation between the equipment and receiver.
- Connect the equipment into an outlet on a circuit different from that to which the receiver is connected.
- Consult the dealer or an experienced radio/TV technician for help.

NOTICE: The manufacture is not responsible for any radio or TV interference caused by unauthorized modification to this equipment. Such modifications could void the user's authority to operate the equipment. In order to make improvements to this product, the design and specifications are subject to change without prior notice.

Wireless Mouse		M-CAD01DB				
Equipment name		Type designation (Type)				
Unit	Restricted substances and its chemical symbols					
	Lead (Pb)	Mercury (Hg)	Cadmium (Cd)	Hexavalent chromium (Cr+6)	Polybrominated biphenyls (PBB)	Polybrominated diphenyl ethers (PBDE)
	○	○	○	○	○	○
	○	○	○	○	○	○
	○	○	○	○	○	○
	○	○	○	○	○	○
<p>Note 1 : “Exceeding 0.1 wt %” and “exceeding 0.01 wt %” indicate that the percentage content of the restricted substance exceeds the reference percentage value of presence condition.</p> <p>Note 2 “: ○”indicates that the percentage content of the restricted substance does not exceed the percentage of reference value of presence.</p> <p>Note 3 : The “—” indicates that the restricted substance corresponds to the exemption.</p>						





M-CAD01DB: XXXXXXXXXXXXXXXX
ELECOM01A: XXXXXXXXXXXXXXXX



M-CAD01DB
Wireless Mouse



Complies with IMDA standards DA106058.

ELECOM CO., LTD.

<http://www.elecom.co.jp/global/>

<p>ELECOM Korea Co., Ltd. Dome-Bldg 5F, 60, Nambusunhwan-ro 347-gil, Seocho-gu, Seoul, 06730, South Korea TEL : +82 (0) 2 – 1588 – 9514 FAX : +82 (0) 2 – 3472 – 5533 www.elecom.co.kr</p>	<p>ELECOM Sales Hong Kong Ltd. 2/F, Block A, 2-8 Watson Road, Causeway Bay, Hong Kong TEL : +852 2806 – 3600 FAX : +852 2806 – 3300 email : info@elecom.asia</p>
<p>ELECOM (SHANGHAI) TRADING Co.,Ltd Room 208-A21, 2nd floor, 1602 Zhongshanxi Road, X uhui District, Shanghai, China, 200235 TEL : +86 021-33680011 FAX : +86 755 83698064</p>	<p>ELECOM Singapore Pte. Ltd Blk 10, Kaki Bukit Avenue 1, #02-04 Kaki Bukit Industri al Estate, Singapore 417942 TEL : +65 6347 – 7747 FAX : +65 6753 – 1791</p>

- ELECOM CO., LTD. owns the copyright of this manual.
- Unauthorised copying and/or reproducing of all or part of this manual is prohibited.
- If you have any suggestions or doubts about this Manual, please contact your dealer.
- The specifications and appearance of this product may be changed without prior notice for product improvement purposes.
- We shall bear no responsibility for any device failure or malfunction of other devices resulting from the use of this product.
- To export the part of this product applicable to strategic goods or services, export or service trading permission according to foreign currency laws is necessary.
- Windows is a trademark of the Microsoft group of companies.
- Company names, product names, and other names in this manual are either trademarks or registered trademarks.

A customer who purchases outside Japan should contact the local retailer in the country of purchase for enquiries. In “ELECOM CO., LTD. (Japan)”, no customer support is available for enquiries about purchases or usage in/from any countries other than Japan. Also, no foreign language other than Japanese is available. Replacements will be made under stipulation of the Elecom warranty, but are not available from outside of Japan.

Wireless Mouse Manual, Safety precautions, and Compliance with regulations 1st edition, August 19, 2020



©2020 ELECOM Co., Ltd. All Rights Reserved.

Documents / Resources

	ELECOM M-CAD01DB Wireless Mouse for 3D CAD 3 Button [pdf] User Manual M-CAD01DB, Wireless Mouse for 3D CAD 3 Button, Wireless Mouse, M-CAD01DB, Mouse
	Elecom M-CAD01DB Wireless Mouse [pdf] User Manual M-CAD01DB Wireless Mouse, Wireless Mouse, ELECOM01A

References

- [ELECOM GLOBAL](#)
- [Standards Certification - ELECOM Global |](#)
- [\(ELECOM KOREA\)](#)