



ELECOM M-BY10BR Wireless Mouse Instruction Manual

[Home](#) » [ELECOM](#) » ELECOM M-BY10BR Wireless Mouse Instruction Manual 

Contents

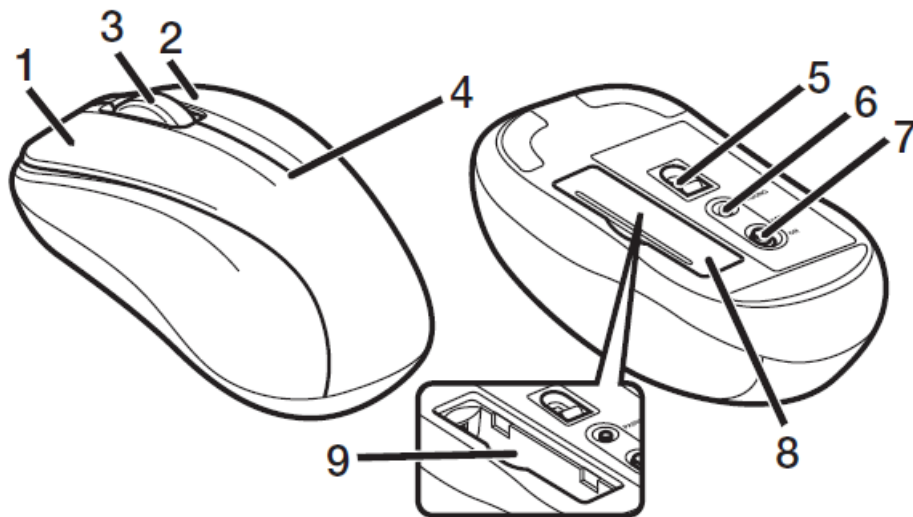
- [1 ELECOM M-BY10BR Wireless Mouse Instruction](#)
- [2 Name and function of each part](#)
- [3 Insert the battery](#)
- [4 Turning the Power On](#)
- [5 Pairing with a PC](#)
 - [5.1 Windows® 10](#)
 - [5.2 For macOS Catalina \(10.15\)](#)
- [6 Specifications](#)
- [7 Safety Precautions](#)
- [8 Precautions on wireless](#)
- [9 Documents / Resources](#)
 - [9.1 References](#)
- [10 Related Posts](#)

ELECOM

ELECOM M-BY10BR Wireless Mouse Instruction



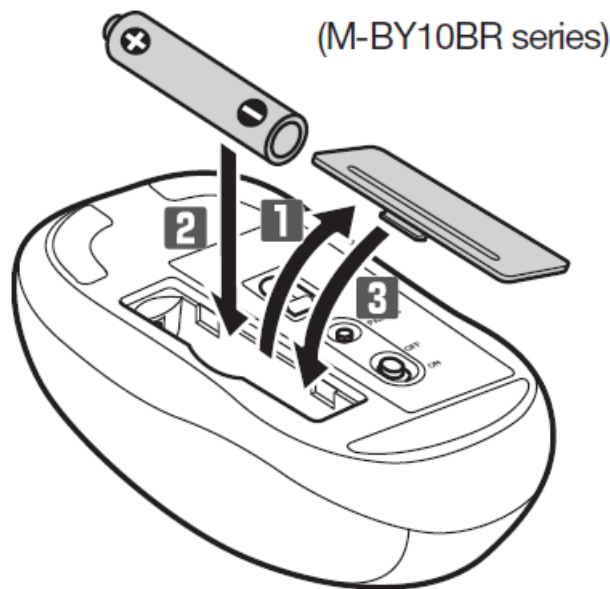
Name and function of each part



1. Left button
2. Right button
3. Wheel
4. LED light
 - During pairing standby state, the LED blinks red.
 - Battery level is indicated by the number of the LED blink times when power is ON.
 (Blinks once in red)Time to change the battery
 (Blinks five times in red)Battery level is sufficient
 - When remaining battery becomes low during use, the LED blinks red.
5. Optical sensor
6. Pairing button
7. Power Switch
8. Battery cover
9. Battery-storage compartment

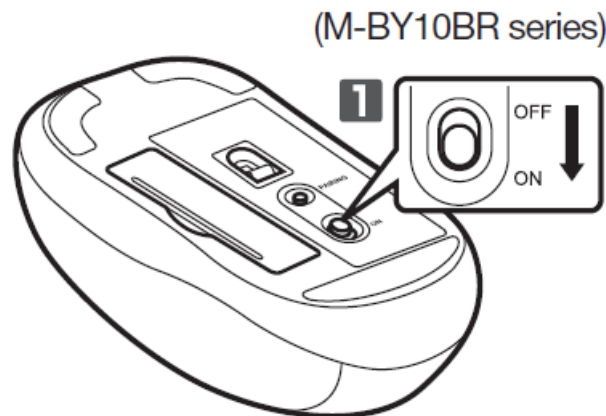
The illustrations are for the M-BY10BR series.

Insert the battery



1. Remove the battery cover.
2. Insert the battery.
Insert with the correct battery plus and minus orientation.
3. Insert with the correct battery plus and minus orientation.

Turning the Power On



1. Slide the power switch to the ON position. The LED lamp will blink periodically according to the amount of battery left.
 - When the battery level is low, the number of times the LED lamp blinks will decrease.

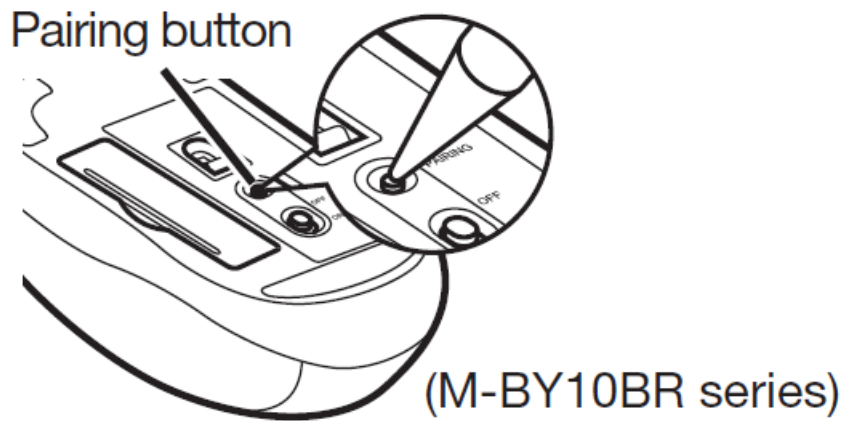
Power-saving mode

When the mouse is left untouched for a fixed period of time while the power is ON, it automatically shifts to power-saving mode. The mouse is released from the power-saving mode when it is touched.

- Mouse operation may be unstable for a few seconds after returning from the power-saving mode.

Pairing with a PC

The pairing method may differ depending on the PC you are using. This section covers Windows® and Macintosh standard Bluetooth® functions. For more information, please read the instruction manual for your PC. Please carry out the pairing operation using your current mouse or touchpad on your device.



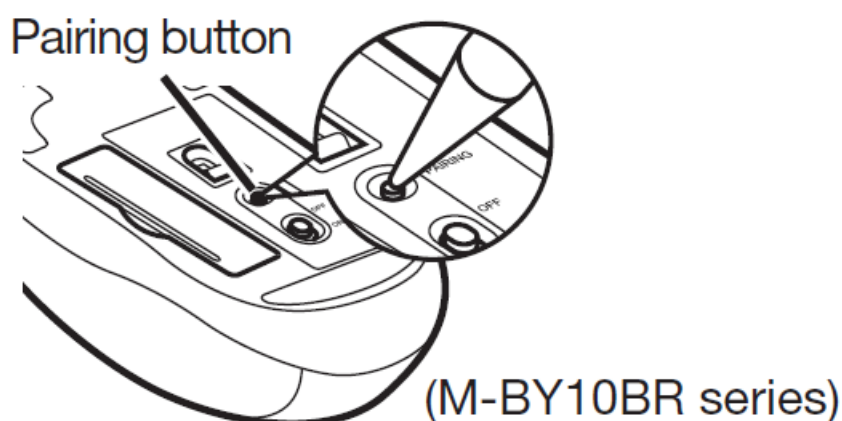
1. Click on the "Start" button on the lower left of the screen, and click on the "Settings" icon.
2. Click on "Devices" on the "Windows Settings" screen.
3. Click on "Bluetooth and Other Devices", and click on "Add a Bluetooth Device or Other Devices".
4. Click on "Bluetooth".
5. When the add device screen is displayed, hold down the pairing button on the bottom for two to three seconds, and then release.

Pairing button

(M-BY10BR series) Pairing mode is activated, and the LED lamp blinks red.

6. Click on "ELECOM IR Mouse" to begin pairing.
7. When it changes to "Connected", click on "Complete".
8. This product is added to "Mice, keyboards, pens", displays "Connected" and pairing is complete.

For macOS Catalina (10.15)



1. From the Apple menu, click "System Settings..." to display the system environment settings screen.
2. Click "Bluetooth" to display the "Bluetooth" environment settings screen.
3. During the device search, hold down the pairing button on the bottom surface for two to three seconds, and then release.

(M-BY10BR series)

Pairing mode is activated, and the LED lamp blinks red.

4. Select “ELECOM IR Mouse”, and click “Connect” to start pairing.
5. When it changes to “Connected”, pairing is completed.

Specifications

Resolution	1300 dpi
Compatible standard	Bluetooth 5.0 Class2
Supported profile	HOGP (HID Over GATT Profile)
Radio wave method	GFSK
Radio frequency	2.4 GHz band
Radio wave range	Magnetic surfaces (such as steel desks): approximately 3 m Non-magnetic surfaces (such as wooden desks): approximately 10 m * These are test values in company environment and are not guaranteed.
Read method	Optical sensor method
Emitted light type	Non-visible wavelength range
Dimensions (W × D × H)	M-BY10BR/M-K5BR series : Approx. 53 mm × 93 mm × 37 mm M-BY11BR/M-K6BR series : Approx. 59 mm × 105 mm × 39 mm
Weight	M-BY10BR/M-K5BR series : Approx. 59 g *Including the battery M-BY11BR/M-K6BR series : Approx. 67 g *Including the battery
Operational temperature/humidity	5°C to 40°C/ up to 90%RH (without condensation)
Storage temperature/humidity	-10°C to 60°C/ up to 90%RH (without condensation)
Supported battery	Any one of AAA alkaline battery, AAA manganese battery, AAA type nickel-metal hydride battery
Operational time	Estimate when using alkaline battery Continuous operation time : Approximately 153 hours Continuous standby time : Approximately 500 days Estimated usage time : Approximately 309 days (The above is assuming the computer is used for eight hours a day with 5% of that time spent operating the mouse.)
Supported OS	Windows® 10, Windows® 8.1, macOS Catalina (10.15), Android OS 7 to 10, iOS iPadOS (13.4) (Updating the OS or installing a service pack may be necessary.) * Compatibility information was retrieved during operation confirmation in our verification environment. There is no guarantee of complete compatibility with all devices, OS versions, and applications.

Safety Precautions

Situation that needs attention

WARNING

If a foreign object (water, metal chip, etc.) enters the product, immediately stop using the product, remove the product from the PC. If you continue to use the product under these conditions, it may cause a fire or electric shock. If the product is behaving abnormally, such as by generating heat, smoke, or a strange smell, immediately stop using the product, shut down the PC, and then sufficiently check whether the product is generating heat while being careful to avoid being burned. Then, remove the product from the PC . After that, contact the retailer from whom you purchased the product. Continuing to use the product under these conditions may cause a fire or electric shock. Do not drop the product or otherwise subject it to impacts. If this product is damaged, immediately stop using it, remove the product from the PC. After that, contact the retailer from whom you purchased the product. If this product is damaged, immediately stop using it, turn the power OFF, and remove the battery from the mouse. After that, contact the retailer from whom you purchased the product. Continuing to use the product while it is damaged may cause a fire or electric shock.

Do not attempt to disassemble, modify or repair this product by yourself, as this may cause a fire, electric shock or product damage.

Do not put this product in fire, as the product may burst, resulting in a fire or injury.

CAUTION

Do not place this product in any of the following environments:

- In a car exposed to sunlight, a place exposed to direct sunlight, or a place that becomes hot (such as around a heater)
- In a moist place or a place where condensation may occur In an uneven place or a place exposed to vibration
- In a place where a magnetic field is generated (such as near a magnet)
- In a dusty place
- This product does not have a waterproof structure. Use and store this product in a place where the product body will not be splashed with water or other liquid. Rain, water mist, juice, coffee, steam or sweat may also cause product damage.
- Avoid looking directly at the light of the optical sensor as doing so may cause eye damage.
- If this product is used on a transparent surface such as glass or a highly reflective surface such as a mirror, the optical sensor will not function correctly and the product's cursor movement will become unstable.
- Only use this product with PCs and video game systems.
- Do not use this product with any device that may significantly be affected in the case of this product malfunctioning.
- When you no longer need to use this product and the battery, be sure to dispose of them in accordance with the local ordinances and laws of your area.

Batteries

- For this product, use AAA alkaline battery, AAA manganese battery, or AAA type nickel-metal hydride rechargeable battery.
- When not using this product for long periods of time, remove the battery. This may cause fluid leak or malfunction.

Cleaning the Product

If the product body becomes dirty, wipe it with a soft, dry cloth. Use of a volatile liquid (paint thinner, benzene, alcohol) may affect the material quality and color of the product.

Precautions on wireless

This product is a wireless device that can use the entire 2.4 GHz band, and is able to avoid the mobile entity identification device range. The GFSK method is adopted as the radio wave method, and the interference distance is 10m.

The 2.4 GHz band is also used in medical devices and wireless LAN devices of the IEEE 802.11b/11g/11n standards.

- Before using this product, check whether “other wireless stations*” are not operating nearby.
- In the unlikely event that radio interference occurs between this product and “other wireless stations *”, change the location of use or stop using this product.

Other wireless stations” refer to industrial, scientific, medical instruments which use the same 2.4 GHz as this product, as well as other wireless stations of the same type, such as in-house mobile entity identification wireless stations requiring a license, specific low power wireless stations and amateur wireless stations not requiring a license, used in plant production lines.

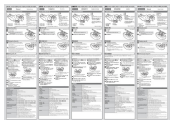
WARNING

- Do not use in equipment which may cause serious effects due to it malfunctioning. In rare cases, it may be affected by radio waves of the same frequency or radio waves of mobile phones from outside, causing a malfunction, deterioration in operation, or stop working.
- Do not use this product in places where radio wave usage is prohibited, such as hospitals. Radio waves of this product may affect electronic devices and medical devices (for example pacemakers).
- Due to the possibility of hindering safe navigation of aircraft, use of wireless mice in aircraft is prohibited by the Civil Aeronautics Act. Turn off the power of the wireless mice before boarding and do not ever use after boarding.
 - Please note that we can not assume any responsibility, even if events such as an accident or social damage occur due to a failure of this product.

Limitation of Liability

- In no event will ELECOM Co., Ltd be liable for any lost profits or special, consequential, indirect, punitive damages arising out of the use of this product.
- ELECOM Co., Ltd will have no liability for any loss of data, damages, or any other problems that may occur to any devices connected to this product.

Documents / Resources



[ELECOM M-BY10BR Wireless Mouse](#) [pdf] Instruction Manual
 M-BY11BR, MBY11BR, YWO-M-BY11BR, YWOMBY11BR, M-BY11BR, M-K5BR, M-K6BR, M-BY10BR Wireless Mouse, Wireless Mouse

References

- [ELECOM GLOBAL](#)
- [Standards Certification - ELECOM Global |](#)
- [\(ELECOM KOREA\)](#)