



# ELECOM M-BL20DB Wireless Mouse User Manual

[Home](#) » [ELECOM](#) » ELECOM M-BL20DB Wireless Mouse User Manual 

# ELECOM

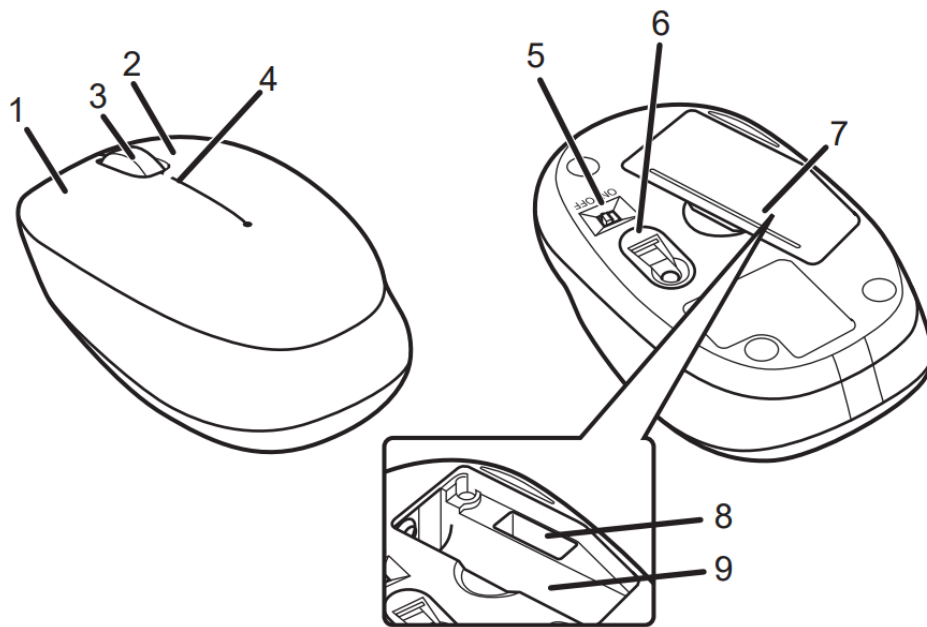
**M-BL20DBseries / ELECOM01A  
Wireless Mouse Manual**

## Contents

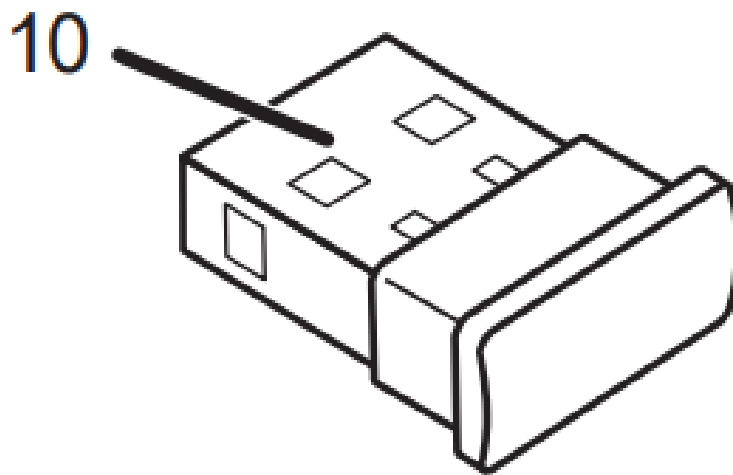
- [1 Name and function of each part](#)
- [2 Inserting the Battery](#)
- [3 Turning the Power On](#)
- [4 Connecting to a PC](#)
- [5 Specifications](#)
- [6 Safety Precautions](#)
- [7 Cautions for Wireless Equipment](#)
- [8 Compliance status](#)
- [9 Documents / Resources](#)
- [10 Related Posts](#)

## Name and function of each part

### Mouse

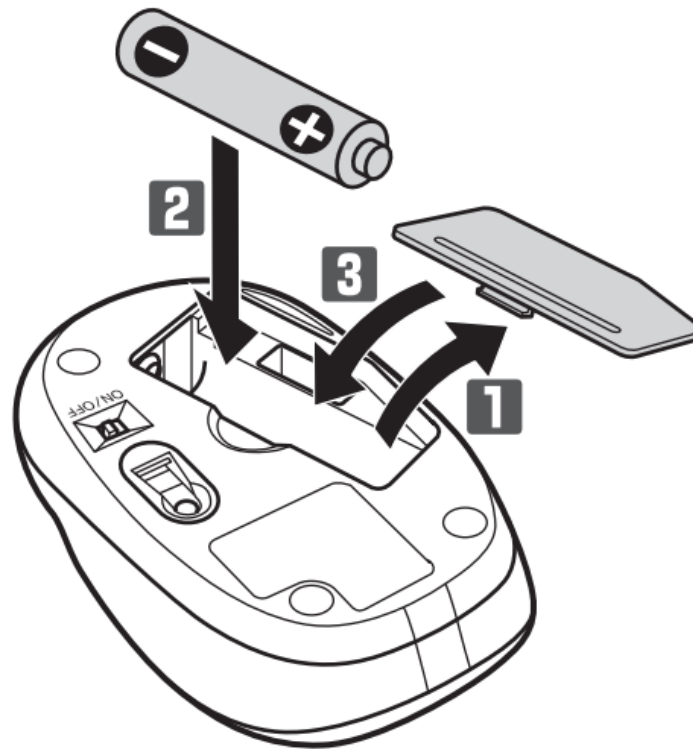


## Receiver unit



1. Left button
2. Right button
3. Wheel
4. Power indicator light When the power is turned ON, the light underneath the wheel becomes illuminated in red for a fixed period of time. If flashes red when the battery level gets low.
5. Optical sensor
6. Battery cover
7. Power switch
8. Receiver-unit storage compartment
9. Battery-storage compartment
10. USB connector (male)

## Inserting the Battery



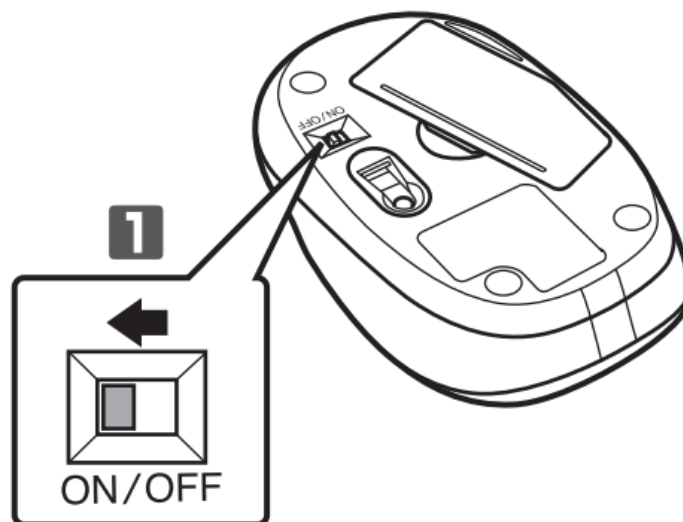
1. Remove the battery cover.
2. Insert the battery.



Ensure that the battery is inserted with its positive + and negative - ends oriented correctly.

3. Attach the battery cover.

## Turning the Power On



1. Slide the power switch to the ON position.

Power-saving mode

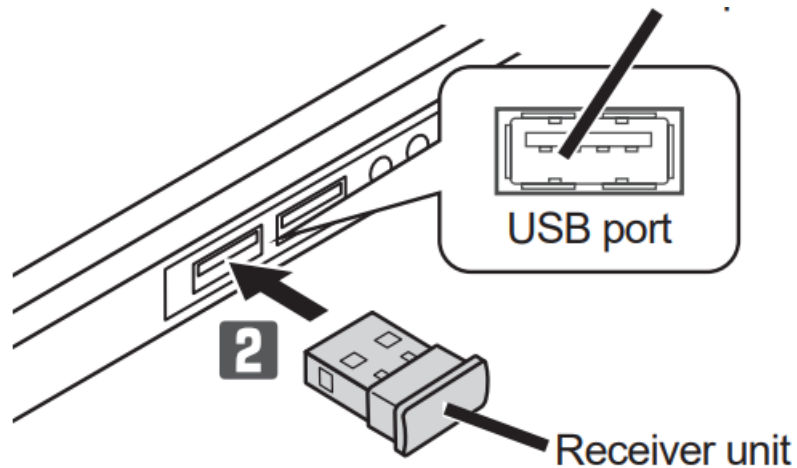


When the mouse is left untouched for a fixed period of time while the power is ON, it automatically shifts to power-saving mode. The mouse is released from the power-saving mode when it is touched.

\* Mouse operation may be unstable for a few seconds after returning from the power-saving mode.

## Connecting to a PC

Insert the receiver into the USB port.



1. Start the PC.
2. Insert the receiver unit into the PC's USB port.



Plugin the connector in the correct place with the correct side facing up. If you feel strong resistance when inserting the USB connector, check that the shape and orientation of the connector is correct. Using excessive force may damage the connector and cause injury. Do not directly touch the terminal area of the USB connector.

3. The driver will be automatically installed, and you will then be able to use the mouse.

## Specifications

Resolution	1000 dpi
Interface	USB
Radio frequency	2.4 GHz band
Radio wave method	GFSK
Operation distance	Non-magnetic surface (e.g. wooden desk) approx. 10 m Magnetic surface (e.g. steel desk) approx. 3 m * These values were obtained in ELECOM's test environment and are not guaranteed.
Dimensions (w x D x H)	Mouse Approx. 56 mm x 90 mm x 32 mm Receiver unit Approx. 16 mm x 19 mm x 6 mm
Operating temperature/humidity	5°C to 40°C/90%RH or less (without condensation)
Storage temperature/ humidity	-10°C to 60°C/90%RH or less (without condensation)
Supported battery	M alkaline battery, AA manganese battery, M nickel-metal hydride rechargeable battery
Operating time	Estimated operating times when using an alkaline battery Continuous operating time: approx. 235 hours Continuous standby time: approx. 277 days Estimated usage time: approx. 338 days The above is assuming the computer is used for eight hours a day with 5% of that time spent operating the mouse.
Supported OS	Windows® 10, Windows® 8.1, Windows® RT8.1, Windows® 7, Windows Vista®, Windows® XP, Macintosh OS X 10.10, Macintosh OS X 10.11 (Updating the OS or installing a service pack may be necessary.)

## Safety Precautions



Prohibited action



Mandatory action



The situation that needs attention



**WARNING**



If a foreign object (water, metal chip, etc.) enters the product, immediately stop using the product, remove the receiver unit from the PC, and remove the battery from the product. If you continue to use the product under these conditions, it may cause a fire or electric shock.



If the product is behaving abnormally, such as by generating heat, smoke, or a strange smell, immediately stop using the product, shut down the PC, and then sufficiently check whether the product is generating heat while being careful to avoid being burned. Then, remove the receiver unit from the PC and remove the battery from the product. After that, contact the retailer from whom you purchased the product. Continuing to use the product under these conditions may cause a fire or electric shock.



Do not drop the product or otherwise subject it to impacts. If this product is damaged, immediately stop using it, remove the receiver unit from the PC, and remove the battery from the product. After that, contact the retailer from whom you purchased the product. Continuing to use the product while it is damaged may cause a fire or electric shock.



Do not attempt to disassemble, modify or repair this product by yourself, as this may cause a fire, electric shock, or product damage.



Do not put this product on fire, as the product may burst, resulting in a serious fire or injury.



Do not insert or remove the receiver unit with wet hands. Also, do not make alternations to or forcefully bend the receiver unit. Doing so may cause a fire or electric shock.



The receiver unit presents a swallowing hazard for children, so be sure to store it in a place out of the reach of children.



#### CAUTION



Do not place this product in any of the following environments:

- In a car exposed to sunlight, a place exposed to direct sunlight, or a place that becomes hot (around a heater, etc.)
- In a moist place or a place where condensation may occur
- In an uneven place or a place exposed to vibration
- In a place where a magnetic field is generated (near a magnet, etc.)
- In a dusty place



This product does not have a waterproof structure. Use and store this product in a place where the product body will not be splashed with water or other liquid. Rain, water mist, juice, coffee, steam or sweat may also cause product damage.



Avoid looking directly at the light of the optical sensor as doing so may cause eye damage.



Only use this product with PCs and video game systems.



Do not use this product with any device that may significantly be affected in the case of this product malfunctioning.



If this product is used on a transparent surface such as glass or a highly reflective surface such as a mirror, the optical sensor will not function correctly and the product's cursor movement will become unstable.



If this mouse isn't going to be used for one month or longer, remove the receiver unit from the PC.



When you no longer need to use this product and the battery, be sure to dispose of them in accordance

with the local ordinances and laws of your area.

## Batteries



Use an AA alkaline battery, an AA manganese battery, or a rechargeable AA nickel hydride battery with this product.



If this product is not going to be used for a long period of time, remove the battery to avoid battery leakage and failure.

### Cleaning the Product

If the product body becomes dirty, wipe it with a soft, dry cloth.



The use of a volatile liquid (paint thinner, benzene, alcohol, etc.) may affect the material quality and color of the product.


## Cautions for Wireless Equipment

This product is wireless equipment using the entire range of the 2.4 GHz band and it is possible to avoid the band of mobile object identification systems. GFSK is used for the radio wave method. The interference distance is 10 m. The 2.4 GHz band is also used by medical equipment, Bluetooth, and wireless LAN equipment conforming to the IEEE802.11b/11g /11n standard.

- Before using this product, check that there are no other “radio stations”\* operating nearby.
  - If electromagnetic interference occurs between this product and other “radio stations”, move this product to another location or stop using this product.
- \* Other “radio stations” refer to industrial, scientific, and medical devices using the 2.4 GHz band, as this product does, other radio stations of this type, licensed radio station remises for a mobile object identification system that is used in factory production lines, certain non-licensed low power radio stations and amateur radio stations.



### WARNING

-  Do not use this product with a device that may have a serious function or influence. There are rare cases where an external radio wave at the same frequency or the radio wave emitted from a mobile phone causes this product to malfunction, slow down, or fail to operate.
  - Do not use this product in a hospital or other locations where the use of radio waves is prohibited. The radio waves of this product may affect electronic and medical devices (e.g. pacemakers).
  - The use of a wireless mouse in an aircraft is prohibited by aviation law as its use may interfere with flight safety. Turn off the power of the mouse body before boarding an aircraft and do not use it in the aircraft.
- \* ELECOM is not liable for any accident or any indirect or consequential damage incurred due to the failure of this product.

## Compliance status

FCC ID: YWO-M-BL20DB

FCC ID: TWO-ELECOM01A

This device complies with Part 15 of the FCC Rules. Operation is subject to the following two conditions: (1) this device may not cause harmful interference, and (2) this device must accept any interference received, including interference that may cause undesired operation.

**NOTE;** This equipment has been tested and found to comply with the limits for a Class B Digital Device, pursuant to part 15 of the FCC Rules. These limits are designed to provide reasonable protection against harmful interference in a residential installation. This equipment generates, uses, and can radiate radio frequency energy and, if not installed and used in accordance with the instruction, may cause harmful interference to radio communication. However, there is no guarantee that interference will not occur in a particular installation. If this equipment does cause harmful interference to radio or television reception, which can be determined by turning the equipment off and on, the user is encouraged to try to correct the interference by one or more of the following measures:

- Reorient or relocate the receiving antenna
- Increase the separation between the equipment and receiver
- Connect the equipment into an outlet on a circuit different from that to which the receiver is connected
- Consult the dealer or an experienced radio/TV technician for help

**NOTICE:** The manufacturer is not responsible for any radio or TV interference caused by unauthorized modification of this equipment. Such modifications could void the user's authority to operate the equipment. In order to make improvements to this product, the design and specifications are subject to change without prior notice

**FCC Radiation Exposure Statement** This equipment complies with FCC RF radiation exposure limits set forth for an uncontrolled environment. This equipment should be installed and operated with a minimum distance of 0.5 centimeters between the radiator and your body. This transmitter must not be co-located or operating in conjunction with any other antenna or transmitter. The antennas used for this transmitter must be installed to provide a separation distance of at least 0.5 cm from all persons and must not be co-located or operating in conjunction with any other antenna or transmitter.

Trademark and name of the manufacturer:  
ELECOM CO., LTD.

[www.elecom.co.jp/global/](http://www.elecom.co.jp/global/)

<p>ELECOM Korea Co., Ltd. Dome-Bldg 5F, 60, Nambusunhwan-ro 347-gil, Seoch o-gu, Seoul, 06730, South Korea TEL : +82 (0) 2 – 1588 – 9514 FAX : +82 (0) 2 – 3472 – 5533 <a href="http://www.telecom.co.kr">www.telecom.co.kr</a></p>	<p>ELECOM Sales Hong Kong Ltd. 2/F, Block A, 2-8 Watson Road, Causeway Bay, Hong Kong TEL : +852 2806 – 3600 FAX : +852 2806 – 3300 email: <a href="mailto:info@elecom.asia">info@elecom.asia</a></p>
<p>ELECOM (SHANGHAI) TRADING Co., Ltd Room 208-A21, 2nd floor, 1602 Zhongshanxi Road, Xuhui District, Shanghai, China, 200235 TEL : +86 021-33680011 FAX : +86 755 83698064</p>	<p>ELECOM Singapore Pte. Ltd Blk 10, Kaki Bukit Avenue 1, #02-04 Kaki Bukit Industrial Estate, Singapore 417942 TEL : +65 6347 – 7747 FAX : +65 6753 – 1791</p>

# ELECOM

Wireless Mouse

Manual, Safety precautions, and Compliance with regulations3rd edition, May XX, 2021

©2018 ELECOM Co., Ltd. All Rights Reserved.

**Documents / Resources**



## [ELECOM M-BL20DB Wireless Mouse](#) [pdf] User Manual

M-BL20DB, MBL20DB, YWO-M-BL20DB, YWOMBL20DB, M-BL20DB, Wireless Mouse