



# ELECOM FDM106 Wireless Keyboard And Mouse Combo User Manual

[Home](#) » [ELECOM](#) » ELECOM FDM106 Wireless Keyboard And Mouse Combo User Manual 

# ELECOM

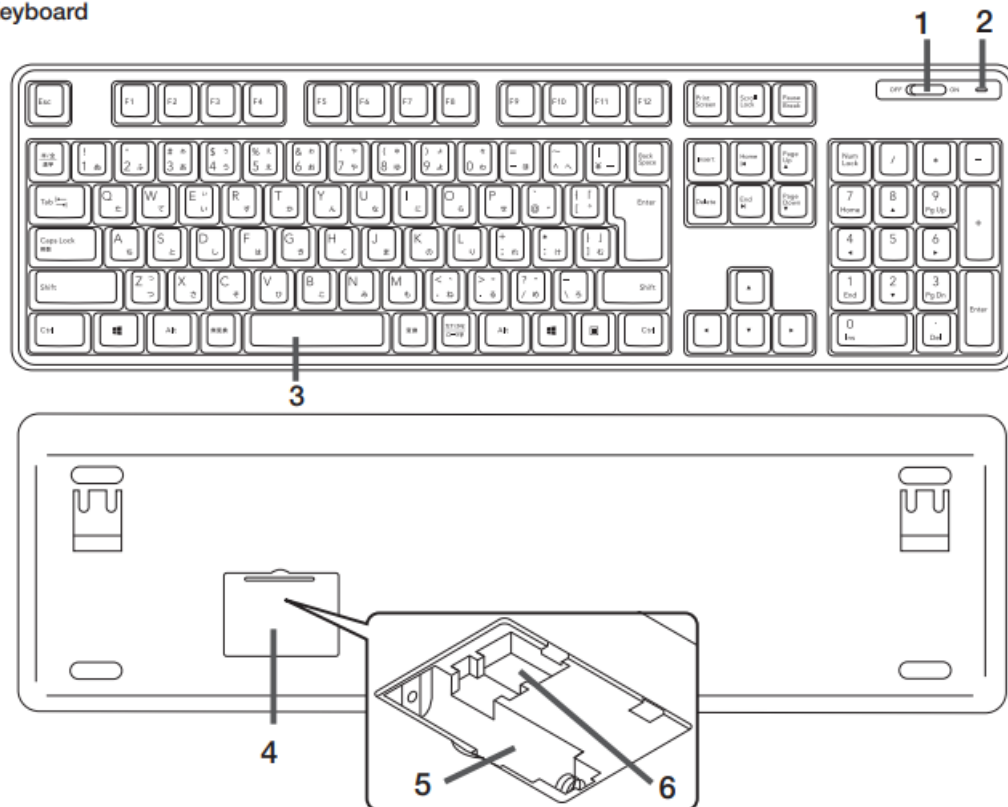
**Model: TK-FDM106/FDM106/M-TKFDM106/ELECOM01B**  
**Wireless Keyboard and Mouse Combo**  
**Manual**

## Contents

- [1 Name and function of each part](#)
- [2 Insert the battery](#)
- [3 Turning the Power On](#)
- [4 Connecting to a PC](#)
- [5 Specifications](#)
- [6 Safety Precautions](#)
- [7 Cautions for Wireless Equipment](#)
- [8 Limitation of Liability](#)
- [9 For Windows®10](#)
- [10 For macOS](#)
- [11 Documents / Resources](#)
  - [11.1 References](#)

## Name and function of each part

## ■ Keyboard



1. Power Switch

2. Battery lamp

If the battery is low during use, the lamp will blink orange during keyboard input.

3. Spacebar

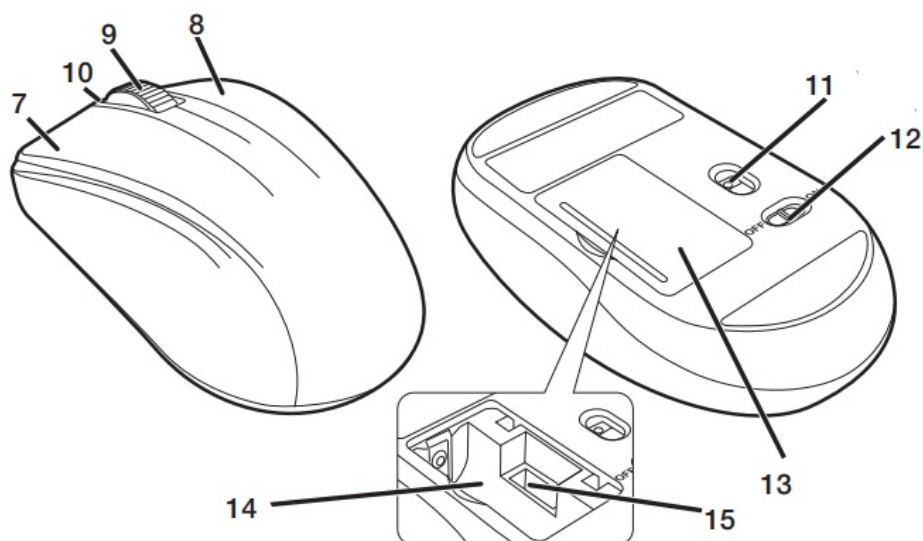
4. Battery cover

5. Battery-storage compartment

6. Receiver unit-storage compartment

\* The receiver unit is kept here when exported.

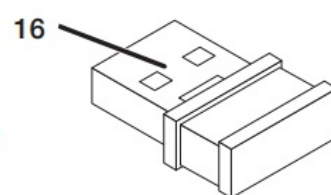
## ■ Mouse



7. Left button

8. Right button

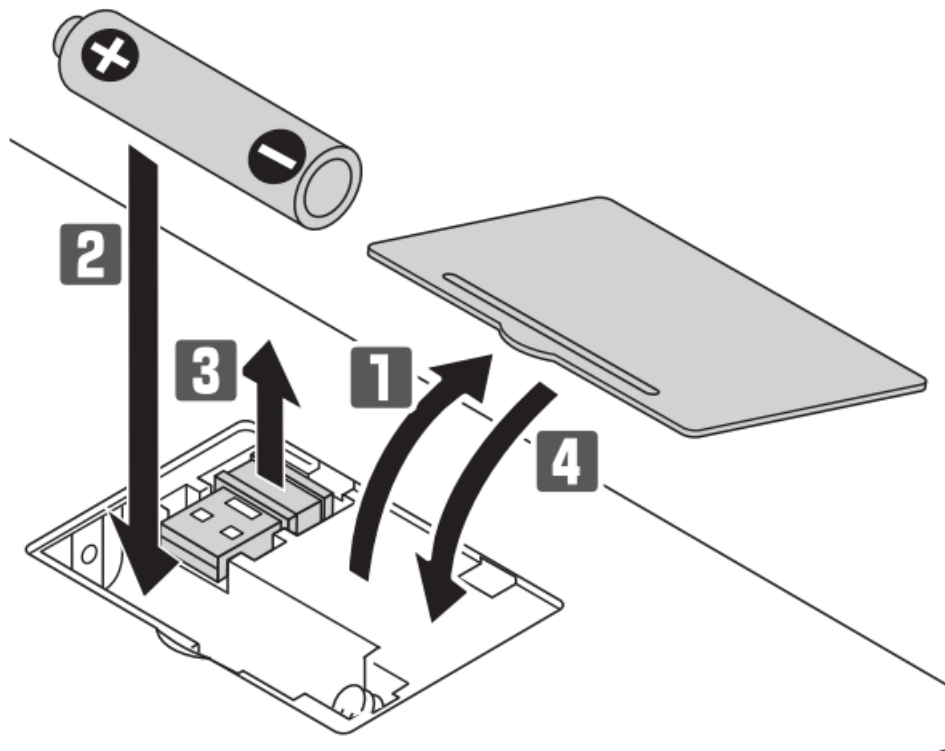
## ■ Receiver unit



- 9. Wheel
- 10. Battery lamp
  - When power is ON, the LED is lit red for a fixed time.
  - When remaining battery becomes low during use, the LED blinks red.
- 11. Optical sensor
  - ⚠ Please note that looking directly into the sensor light may hurt your eyes.
- 12. Power Switch
- 13. Battery cover
- 14. Battery-storage compartment
- 15. Receiver unit-storage compartment
- 16. USB connector (male)

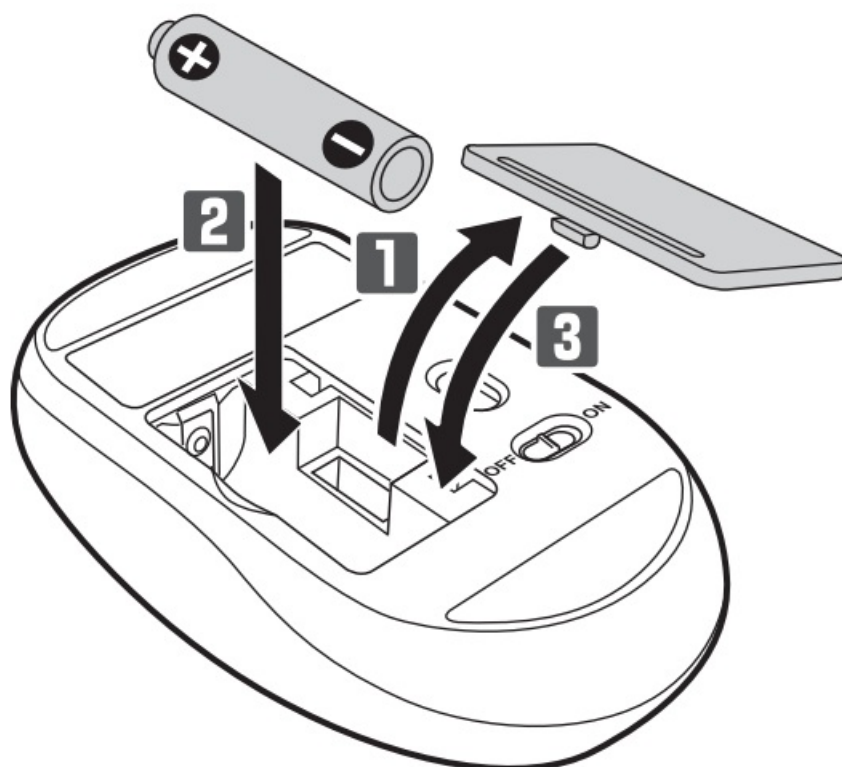
## Insert the battery

### Keyboard



- 1. Remove the battery cover.
- 2. Insert the battery.
  - ⚠ Insert with the correct battery plus and minus orientation.
- 3. Remove the receiver unit.
- 4. Re-attach the battery cover to its original state.

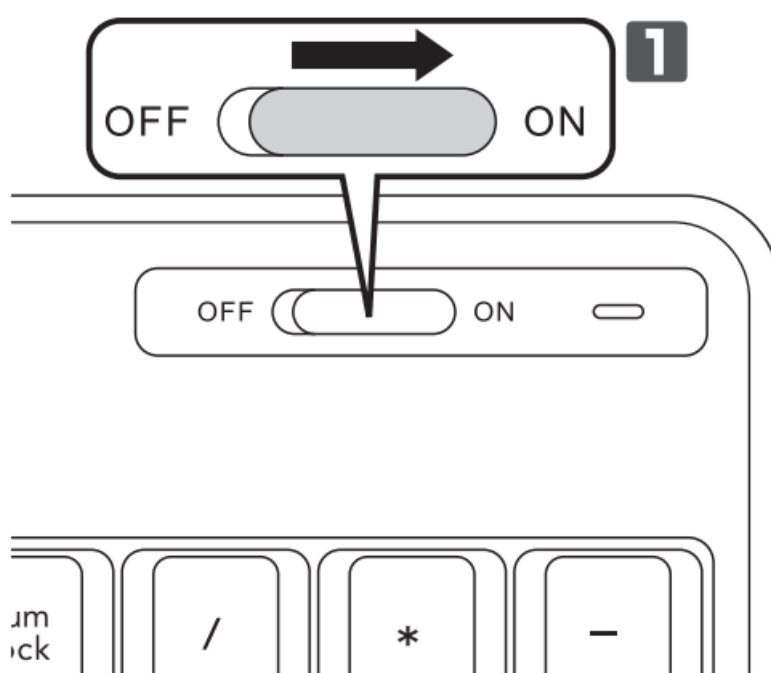
### Mouse



1. Remove the battery cover.
2. Insert the battery.  
 ⚠ Insert with the correct battery plus and minus orientation.
3. Re-attach the battery cover to its original state.


## Turning the Power On

### Keyboard

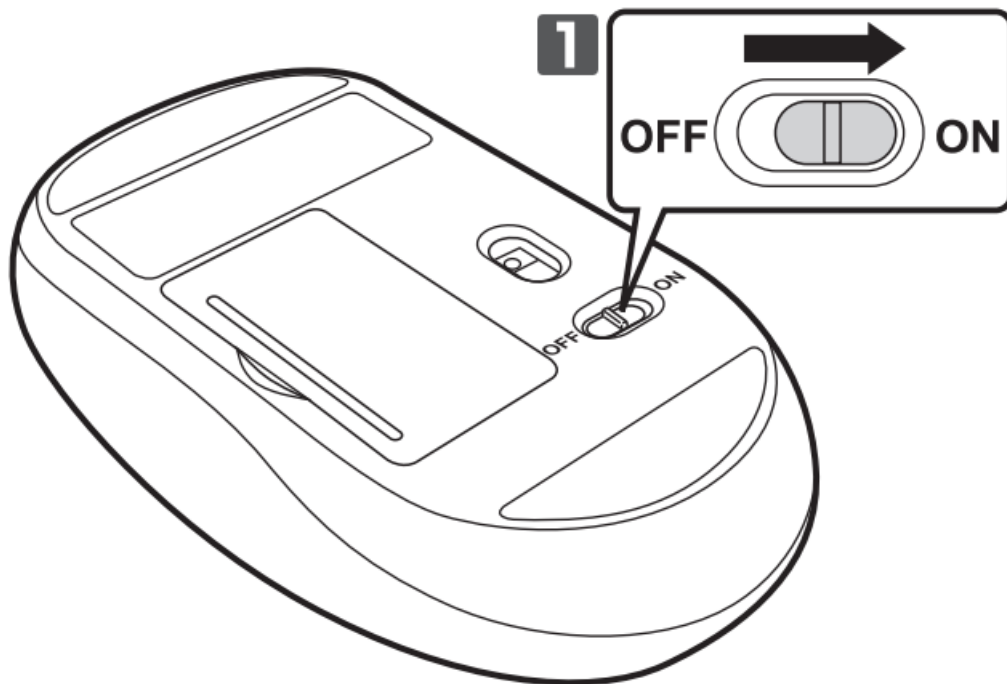


1. Slide the power switch to the on position.

## Regarding standby mode

 The keyboard is usually in standby mode. Tapping on any key will automatically wake the keyboard. The keyboard will enter standby mode if there has not been any input for a fixed period of time.

## Mouse



1. Slide the power switch to the on position.

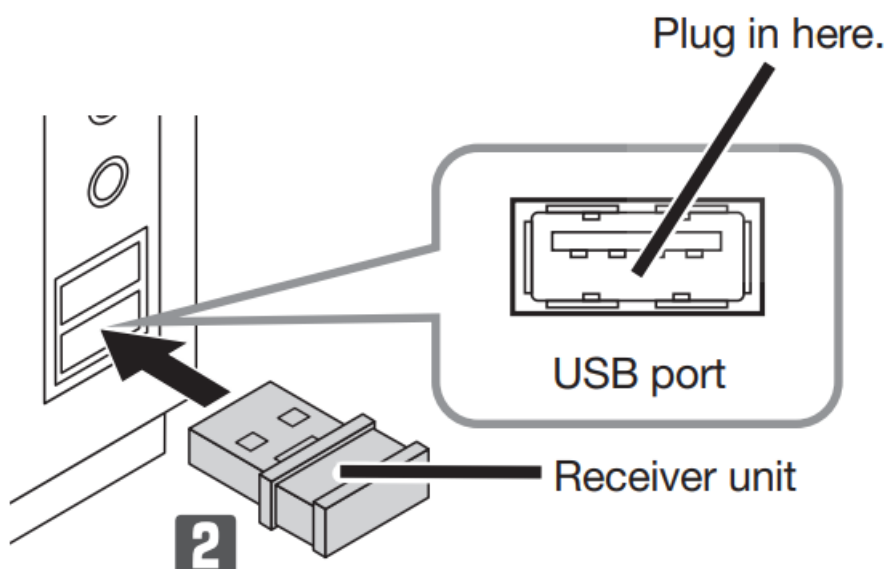
The red battery lamp lights up for a fixed period of time.

\* When remaining battery is low, the LED blinks red for a fixed time.

## To wake the mouse from sleep mode.

To preserve battery life, the mouse will automatically shift to sleep mode if left untouched for a fixed period of time while the power is ON. To wake the mouse from sleep mode, move the mouse.

## Connecting to a PC



### 1. Start the PC.

Start the PC, and then wait for it to be ready to perform operations.

### 2. Insert the receiver unit into the PC's USB port.

Any USB port may be used.



Be sure to sufficiently check the connector orientation and the insertion location.

If you feel a strong resistance when inserting the USB connector, check that the shape and orientation of the connector is correct.

Using excessive force may damage the connector and cause injury.

Do not directly touch the terminal area of the USB connector.

### 3. The driver will be automatically installed. You will then be able to use the keyboard and mouse.

## Specifications

### Keyboard

Number of keys	109 keys (Japanese layout)
Key type	Membrane
Key pitch	19.0 mm
Key stroke	3.5 mm




### Mouse

Resolution	1600 dpi
Read method	Optical sensor method
LED	Red


### General specifications

Compatible models	Windows OS devices equipped with USB interface
Supported OS	Windows 10, Windows 8.1, Windows 7 SP1, Windows XP SP3 (Updating the OS or installing a service pack may be necessary.) * Compatibility information was retrieved during operation confirmation in our verification environment. There is no guarantee of complete compatibility with all devices, OS versions, and applications.
Interface	USB
Radio frequency	2.4 GHz band
Radio wave method	GFSK
Radio wave range	Non-magnetic materials (such as wooden desks): approximately 10 m Magnetic materials (such as iron desks): approximately 3 m * These are test values in company environment and are not guaranteed.
Dimensions (W × D × H)	Keyboard approx. 448 × 136 × 32 (mm) (The stand is not included.) approx. 448 × 136 × 41 (mm) (Using a stand)
	Mouse approx. 60 × 100 × 38 (mm)
	Receiver unit approx. 20 × 16 × 7 (mm)
Weight	Keyboard approx. 568 g *excluding the battery
	Mouse approx. 57 g *excluding the battery
	Receiver unit approx. 2 g
Operational temperature/humidity	5°C to 40°C/ up to 90%RH (without condensation)
Storage temperature/ humidity	-10°C to 60°C/ up to 90%RH (without condensation)
Supported battery	Keyboard and mouse respectively Any one of AA alkaline battery, AA manganese battery, AA type nickel-metal hydride battery.
Operational time	Estimate when using alkaline battery * These are test values in company environment and are not guaranteed. Keyboard Approximately 4 years Mouse Continuous operation time : Approximately 384 hours Continuous standby time : Approximately 1041 days Estimated usage time : Approximately 2 years (The above is assuming the computer is used for eight hours a day with 5% of that time spent operating the mouse.)

## Safety Precautions

-  Prohibited action
-  Mandatory action
-  Situation that needs attention

### WARNING

 If a foreign object (water, metal chip, etc.) enters the product, immediately stop using the product, remove the receiver unit from the PC, and remove the battery from the product. If you continue to use the product under these

conditions, it may cause a fire or electric shock.

❗ If the product is behaving abnormally, such as by generating heat, smoke, or a strange smell, immediately stop using the product, shut down the PC, and then sufficiently check whether the product is generating heat while being careful to avoid being burned. Then, remove the receiver unit from the PC and remove the battery from the product. After that, contact the retailer from whom you purchased the product. Continuing to use the product under these conditions may cause a fire or electric shock.

⊘ Do not drop the product or otherwise subject it to impacts.

If this product is damaged, immediately stop using it, remove the receiver unit from the PC, and remove the battery from the product. After that, contact the retailer from whom you purchased the product.

Continuing to use the product while it is damaged may cause a fire or electric shock.

⊘ Do not attempt to disassemble, modify or repair this product by yourself, as this may cause a fire, electric shock or product damage.

⊘ Do not put this product in fire, as the product may burst, resulting in a serious fire or injury.

⊘ Do not insert or remove the receiver unit with wet hands. Also, do not make alterations to or forcefully bend the receiver unit.

Doing so may cause a fire or electric shock.

❗ The receiver unit presents a swallowing hazard for children, so be sure to store the receiver unit in a place out of the reach of children.



## CAUTION

⊘ Do not place this product in any of the following environments:

- In a car exposed to sunlight, a place exposed to direct sunlight, or a place that becomes hot (around a heater, etc.)
- In a moist place or a place where condensation may occur
- In an uneven place or a place exposed to vibration
- In a place where a magnetic field is generated (near a magnet, etc.)
- In a dusty place

❗ This product does not have a waterproof structure. Use and store this product in a place where the product body will not be splashed with water or other liquid. Rain, water mist, juice, coffee, steam or sweat may also cause product damage.

❗ Do not use this product with any device that may significantly affect other equipment, in case the product malfunctions.

❗ If this product is used on a transparent surface such as glass or a highly reflective surface such as a mirror, the optical sensor will not function correctly and the mouse cursor movement will become unstable.

❗ If the keyboard or mouse is not used for one month or more, remove the receiver unit from the PC.

❗ When you no longer need to use this product and the battery, be sure to dispose of it in accordance with the local ordinances and laws of your area.

## Batteries

❗ This product (both keyboard and mouse) uses AA alkaline batteries, AA manganese batteries, or AA nickel hydride rechargeable batteries.

⊘ If this product is not going to be used for a long period of time, remove the battery to avoid battery leakage and failure.

## Cleaning the Product



If the product body becomes dirty, wipe it with a soft, dry cloth.

⚠ Use of a volatile liquid (paint thinner, benzene, alcohol, etc.) may affect the material quality and colour of the product.

## Cautions for Wireless Equipment

This product is wireless equipment using the entire range of the 2.4 GHz band and it is possible to avoid the band of mobile object identification systems. GFSK is used for the radio wave method. The interference distance is 10 m.

The 2.4 GHz band is also used by medical equipment, Bluetooth, and wireless LAN equipment conforming to the IEEE802.11b/11g /11n standard.

- Before using this product, check that there are no other “radio stations”\* operating nearby.
- If electromagnetic interference occurs between this product and other “radio stations”, move this product to another location or stop using this product.
  - \* Other “radio stations” refer to industrial, scientific and medical devices using the 2.4 GHz band, as this product does, other radio stations of this type, licensed radio station premises for a mobile object identification system that is used in factory production lines, certain non-licensed low power radio stations and amateur radio stations.

## WARNING

- ⚠ Do not use with equipment which may cause serious consequences. There are rare cases in which an external radio wave at the same frequency, or the radio wave emitted from a mobile phone, causes this product to malfunction, slow down, or fail to operate.
- Do not use this product in a hospital or other locations where the use of radio waves is prohibited. The radio waves of this product may affect electronic and medical devices (e.g. pacemakers).
- Due to the possibility of hindering safe navigation of aircraft, the use of wireless keyboards and mouse in aircrafts is prohibited by the Civil Aeronautics Act.  
Remove the batteries from the keyboard and mouse before boarding and do not use after boarding.
  - \* ELECOM is not liable for any accident or any indirect or consequential damage incurred due to the failure of this product.

## Limitation of Liability

- In no event will ELECOM Co., Ltd be liable for any lost profits or special, consequential, indirect, punitive damages arising out of the use of this product.
- ELECOM Co., Ltd will have no liability for any loss of data, damages, or any other problems that may occur to any devices connected to this product.

**Compliance status** [www.elecom.co.jp/global/certification/](http://www.elecom.co.jp/global/certification/)

FCC ID: YWO-TK-FDM106  
YWO-FDM106  
YWO-M-TKFDM106  
YWO-ELECOM01B

This device complies with Part 15 of the FCC Rules. Operation is subject to the following two conditions:  
(1) this device may not cause harmful interference, and (2) this device must accept any interference received, including interference that may cause undesired operation.

**NOTE;** This equipment has been tested and found to comply with the limits for a Class B Digital Device, pursuant to part 15 of the FCC Rules. These limits are designed to provide reasonable protection against harmful interference in a residential installation. This equipment generates, uses and can radiated radio frequency energy and, if not installed and used in accordance with the instruction, may cause harmful interference to radio communication. However, there is no grantee that interference will not occur in a particular installation. If this equipment does cause harmful interference to radio or television reception, which can be determined by tuning the equipment off and on, the user is encouraged to try to correct the interference by one or more of the following measures:

- Reorient or relocate the receiving antenna.
- Increase the separation between the equipment and receiver.
- Connect the equipment into an outlet on a circuit different from that to which the receiver is connected.
- Consult the dealer or an experienced radio/TV technician for help.

**NOTICE:** The manufacture is not responsible for any radio or TV interference caused by unauthorized mediation to this equipment. Such modifications could void the user's authority to operate the equipment. In order to make improvements to this product, the design and specifications are subject to change without prior notice.

**Responsible party**

ELECOM USA, Inc.  
18575 Jamboree Road Suite 600,  
Irvine CA 92612 USA  
[elecomusa.com](http://elecomusa.com)

Please see the current state of RoHS compliant: [www.elecom.co.jp/global/certification/](http://www.elecom.co.jp/global/certification/)

Complies with  
IMDA standards  
DA106058.



**CE Authorised representative :**

Amazon Services Europe S.à r.l  
38 avenue John F. Kennedy, L-1855 Luxembourg



**WEEE Disposal and Recycling Information**

This symbol means that waste of electrical and electronic equipment (WEEE) should not be disposed as general household waste. WEEE should be treated separately to prevent possible harm to the environment or human health. Consult your retailer or local municipal office for collection, return, recycle or reuse of WEEE.

**Trademark and name of the manufacturer:**

**ELECOM CO., LTD.**

[www.elecom.co.jp/global/](http://www.elecom.co.jp/global/)

Fushimimachi 4-1-1, Chuo-ku, Osaka City

- Unauthorised copying and/or reproducing of all or part of this manual is prohibited.
- The specifications and appearance of this product may be changed without prior notice for product improvement purposes.
- We shall bear no responsibility for any device failure or malfunction of other devices resulting from the use of this product.
- To export the part of this product applicable to strategic goods or services, export or service trading permission according to foreign currency laws is necessary.
- Microsoft and Windows are either trademarks or registered trademarks of Microsoft Corporation in the United States and/or other countries.
- Company names, product names, and other names in this manual are either trademarks or registered trademarks.

A customer who purchases outside Japan should contact the local retailer in the country of purchase for enquiries. In "ELECOM CO., LTD. (Japan)", no customer support is available for enquiries about purchases or usage in/from any countries other than Japan. Also, no foreign language other than Japanese is available. Replacements will be made under stipulation of the Elecom warranty, but are not available from outside of Japan.

Wireless Keyboard and Mouse Combo  
Manual, Safety precautions, and Compliance with regulations,  
2nd edition, July 5, 2023

**ELECOM**

©2022 ELECOM Co., Ltd. All Rights Reserved.

How to change the hardware keyboard settings for Windows/macOS



You will need to change the setting to Japanese (JIS) layout keyboard if it is not recognized as a Japanese (JIS) keyboard when connected.

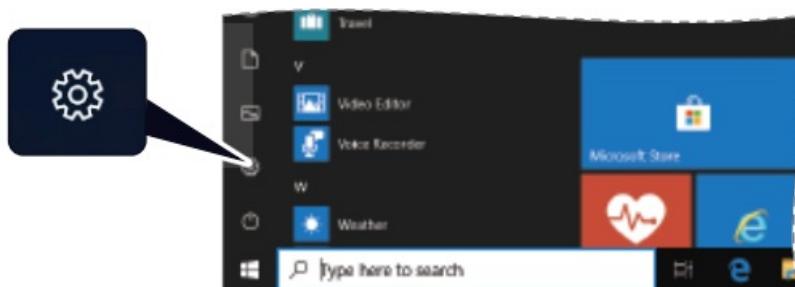
The respective procedures for Windows/macOS are as follows.

## For Windows®10

Change the setting if the connected Japanese 106/109 keyboard is recognized as an English 101/102 keyboard and you are unable to input as printed on the keys.

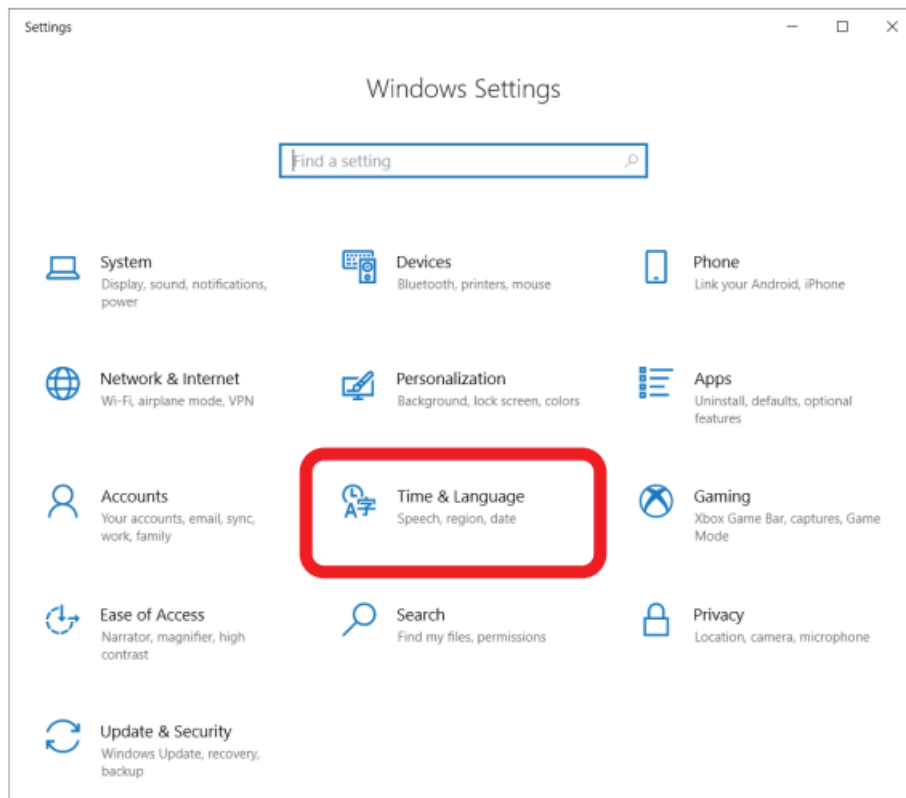
### Change "Hardware keyboard layout"

1. Click on "Start"  on the lower left of the screen, and click on the "Settings"  icon.



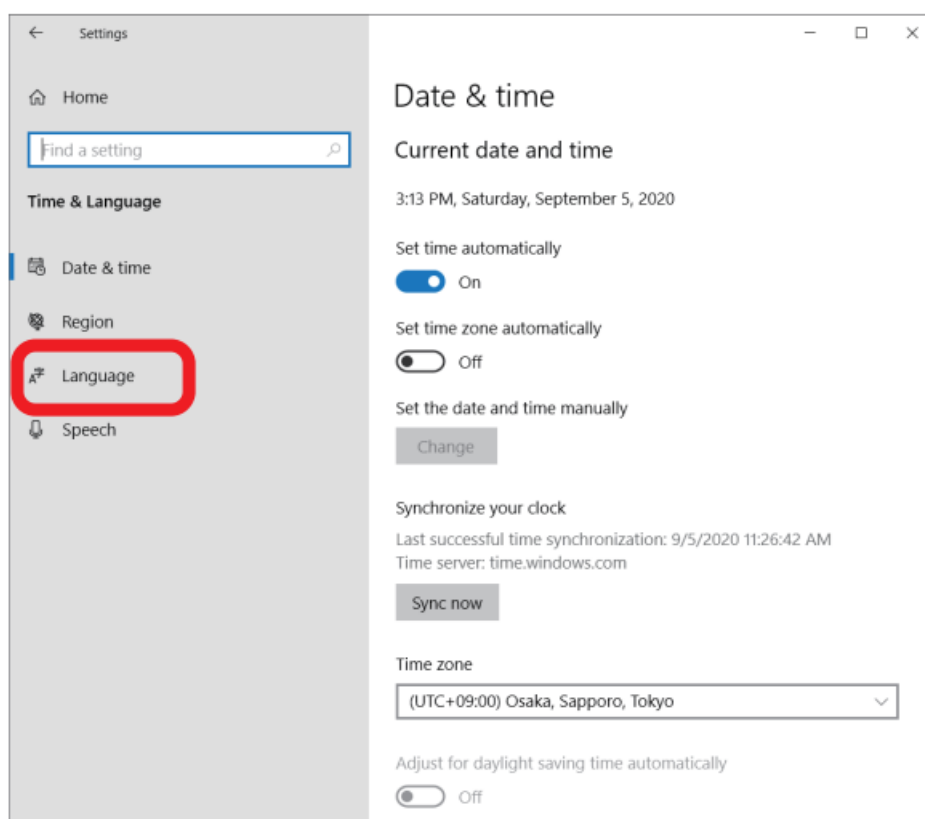
2. Click on "Time & Language".

The "Time & Language" page will appear.



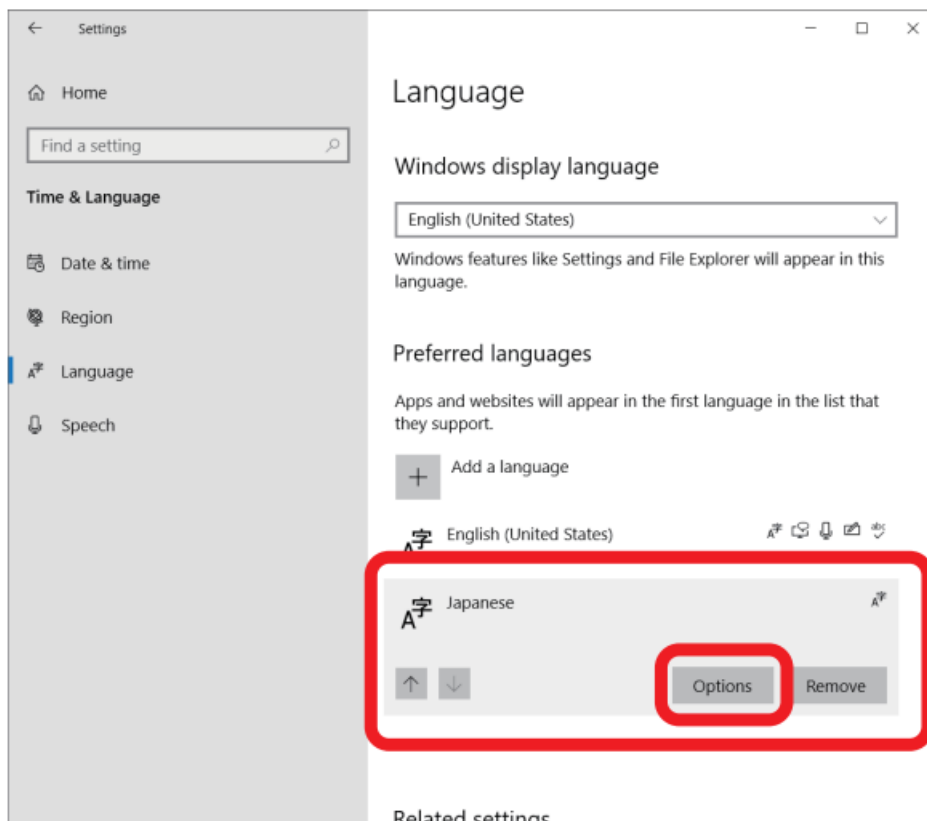
**3. Click on “Language”.**


The “Language” page will appear.



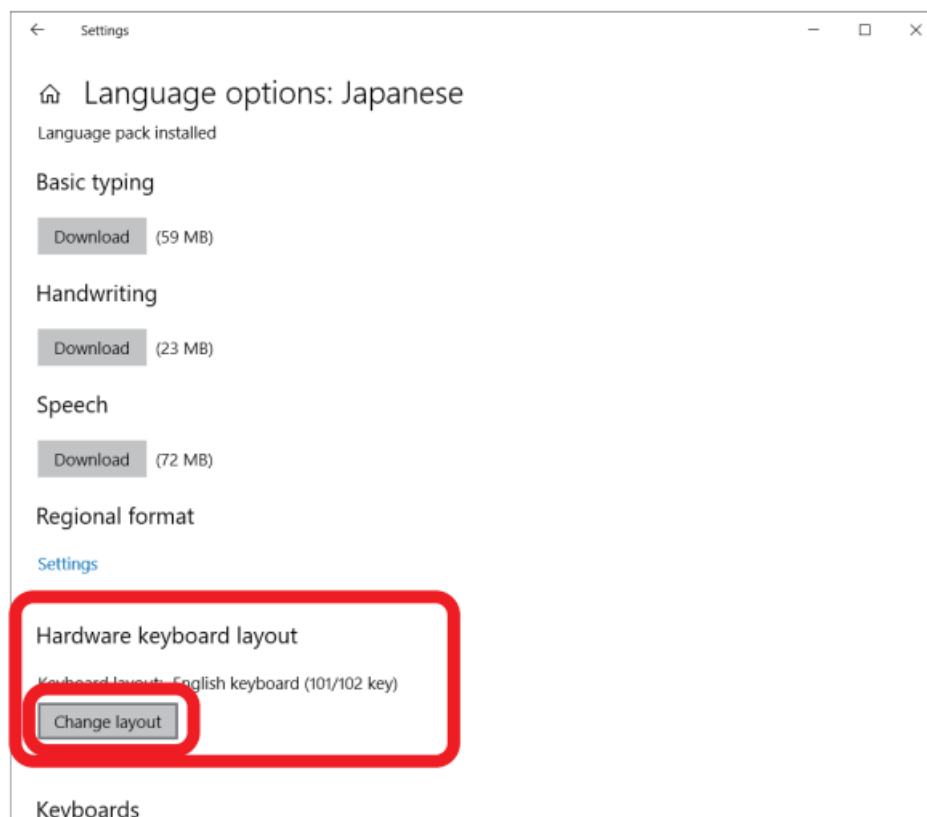
**4. Select “Japanese” from the list of languages and click on “Options”.**

The “Japanese” page will appear.

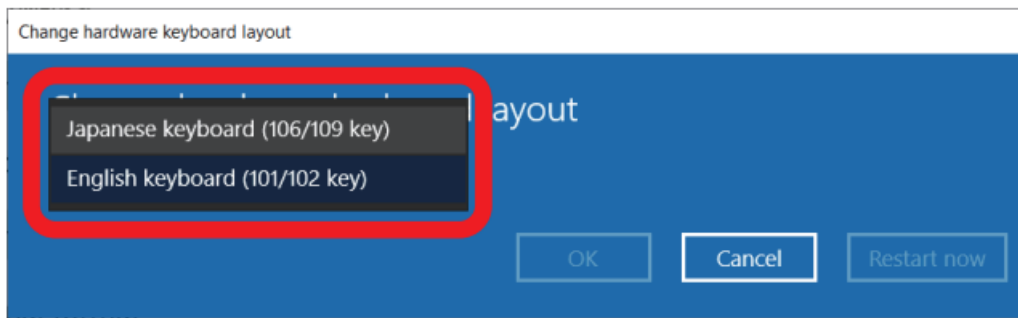


 If “Japanese” is not on the list of languages, click on “+ Add a language” and add “Japanese” from the page.

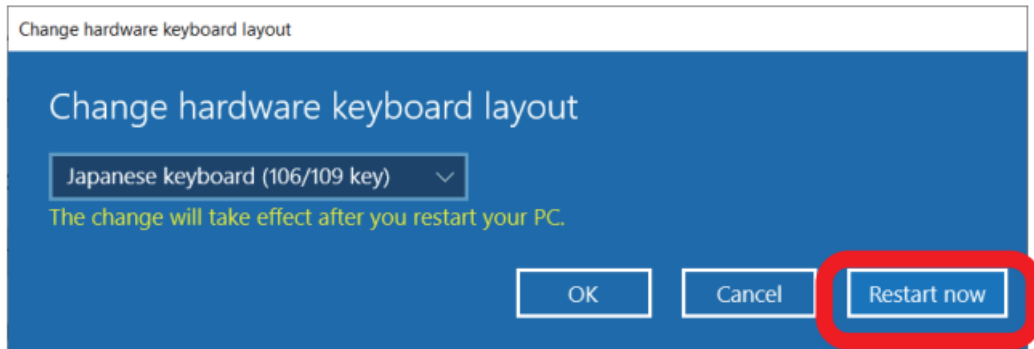
5. Click on “Change layout” under Hardware keyboard layout.  
The “Change hardware keyboard layout” dialogue should appear.



6. Select “Japanese keyboard (106/109) key” from the pull down list.



7. Click “Restart now”.

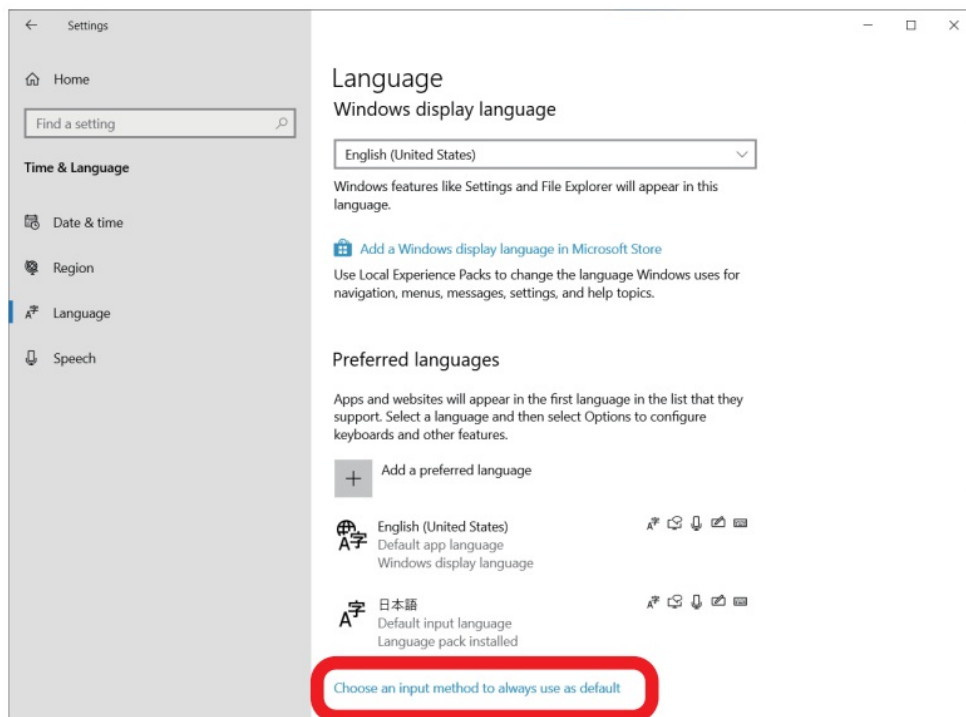


The keyboard layout (key assignment) will be set to “Japanese keyboard (106/109 key)” after restart.

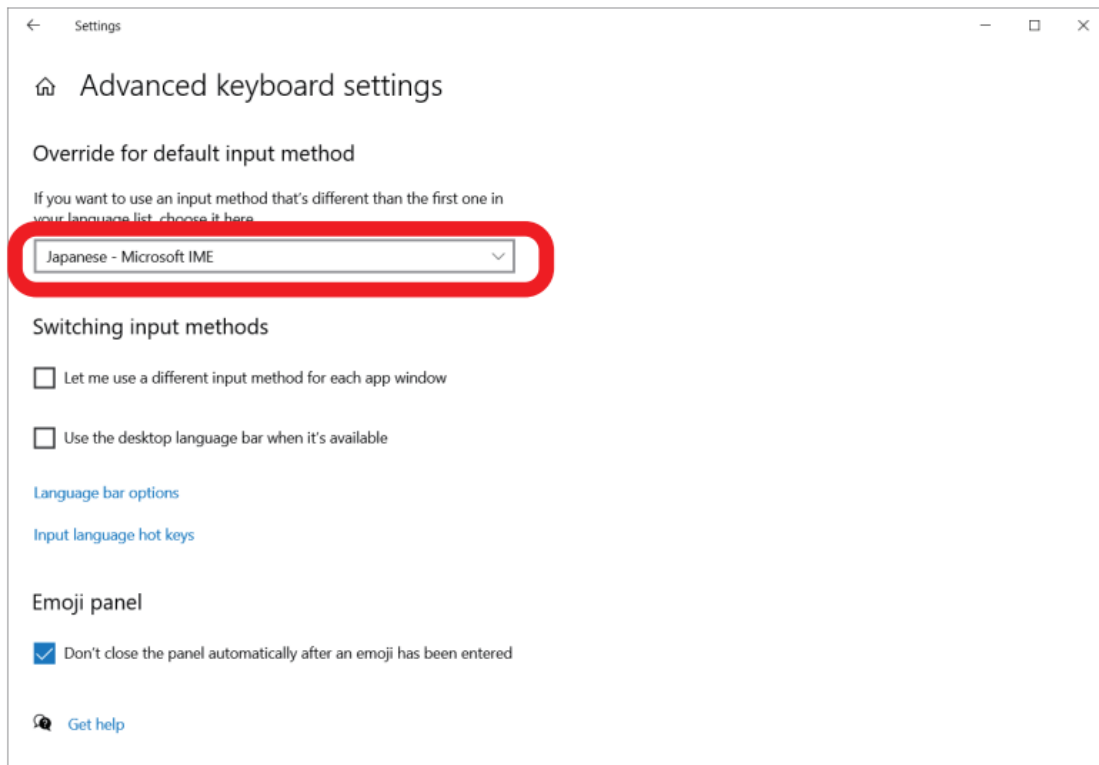
To input IME dependent special characters, follow steps 8- 10 below to change the input method to “Japanese – Microsoft IME”.

8. Follow steps 1- 3 to open the “Language” page.

9. Click on “Choose an input method to always use as default”.



10. Change the input method to “Japanese – Microsoft IME”.

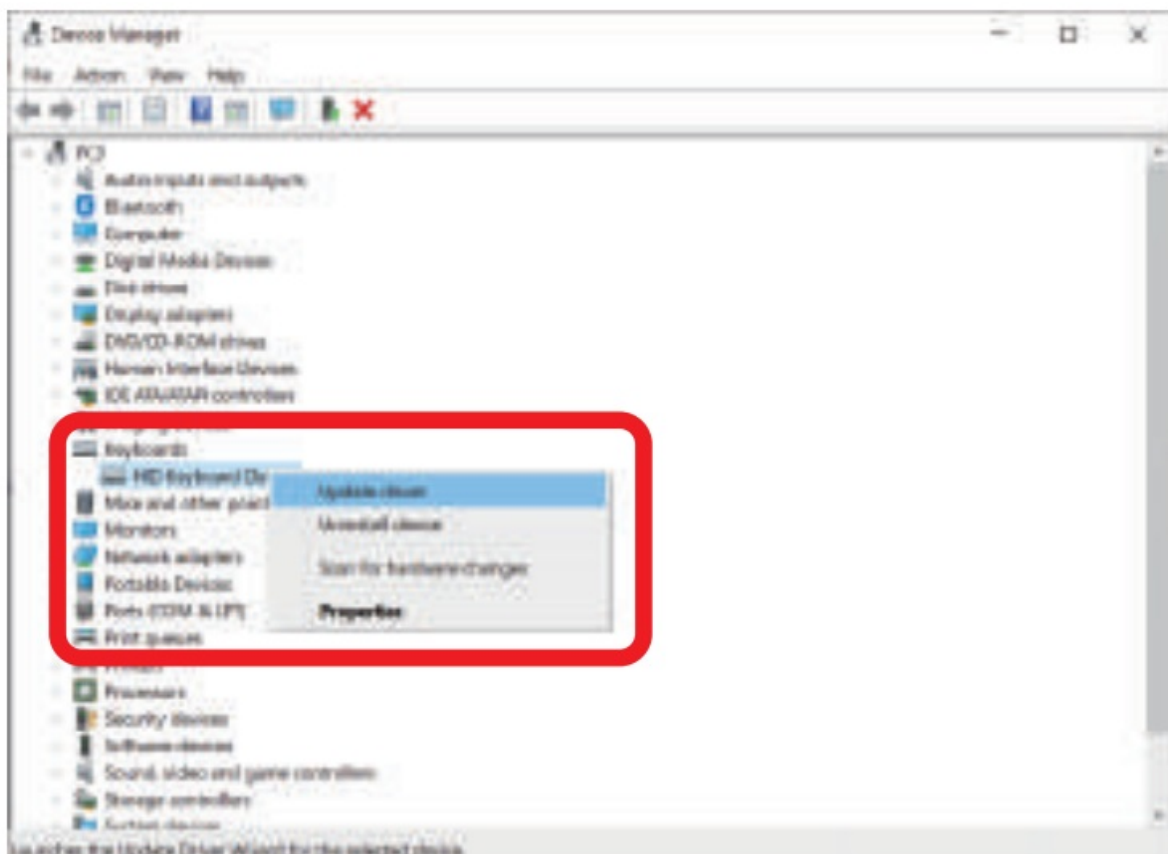


### Update the device driver from the “Device Manager”.

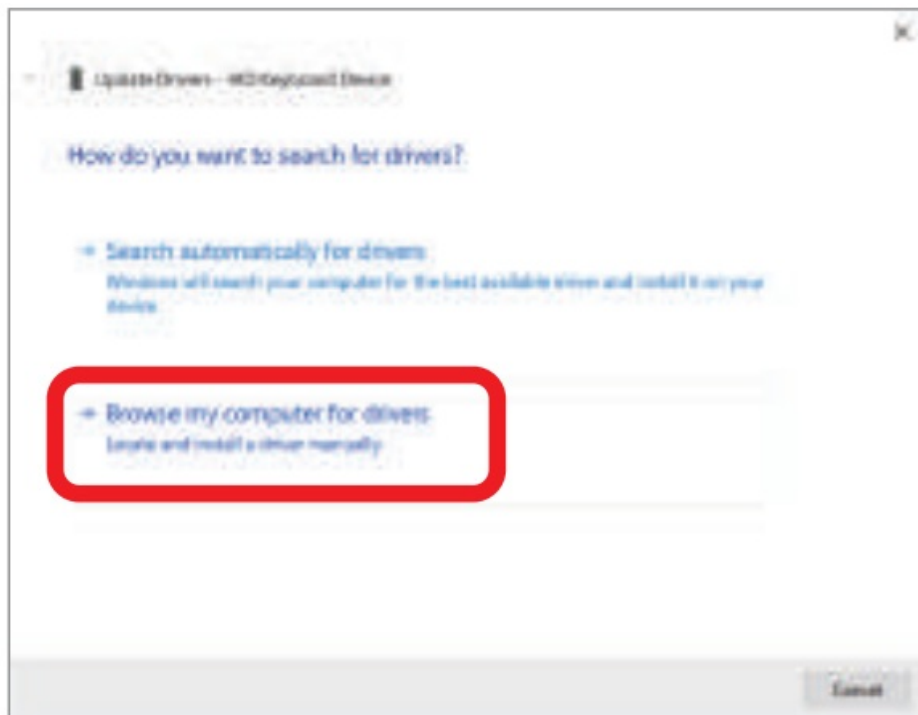
If the input and the printing on the keys do not match up even after the steps above, please try to update the device driver using the following steps.

1. Right click on the start menu. Click on “Device Manager”.
2. Click on “Keyboard” to expand. Right click on “HID Keyboard Device” and select “Update driver” from the menu.

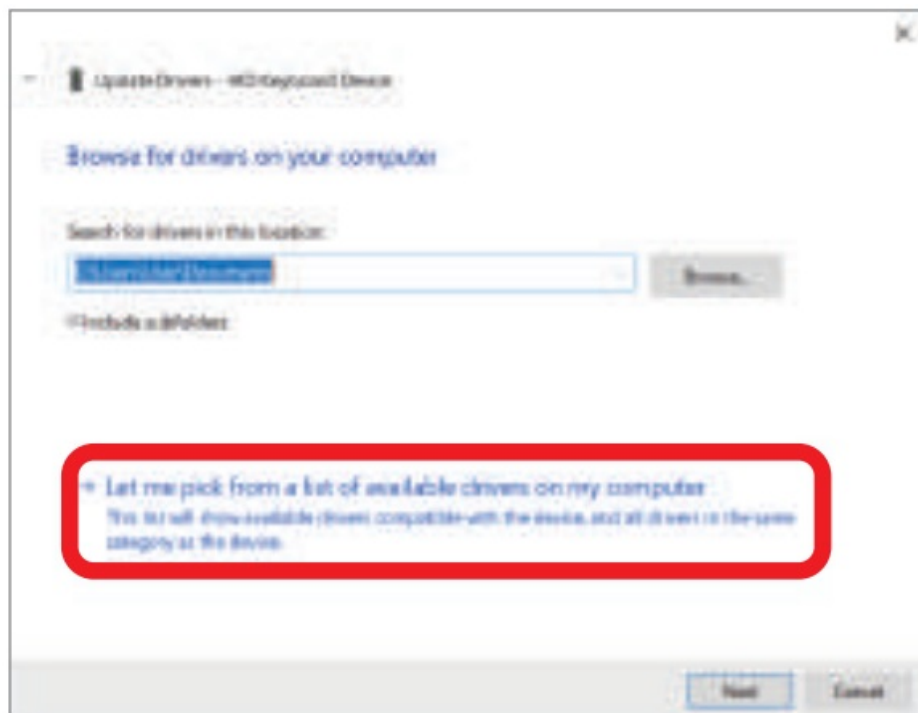
The “Update driver” wizard should appear.



3. Click on “Browse my computer for drivers”.

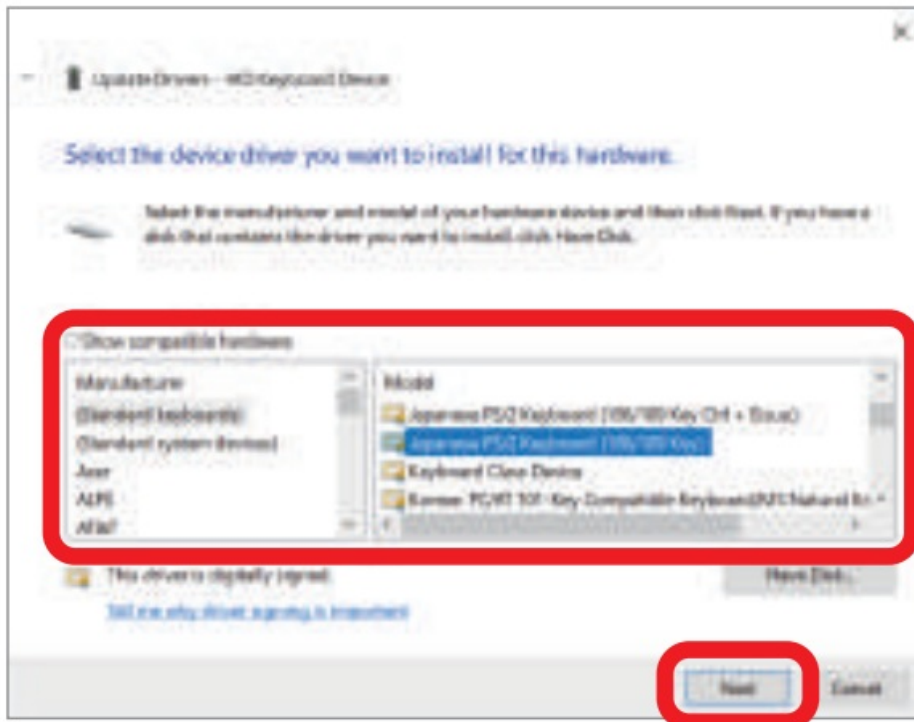


4. Click on "Let me pick from a list of available drivers on my computer".

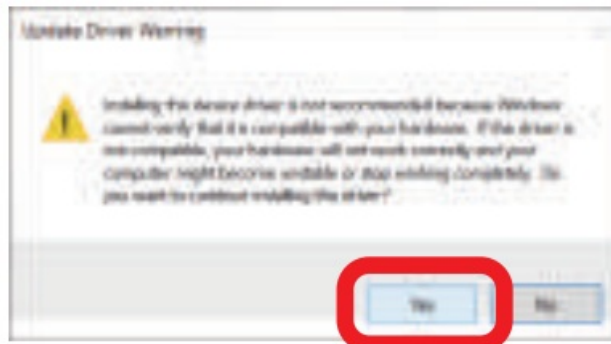


5. In the "Select the device driver you want to install for this hardware" page, uncheck "Show compatible hardware", select "(Standard keyboards)" under Manufacturer, then select "Japanese PS/2 Keyboard (106/109 key)". Click "Next".





6. The “Update Driver Warning” dialogue should appear. Click “Yes”.



7. When the device driver update is complete, restart Windows.



Changes made to the device driver will not be reflected if Windows is not restarted.

- ELECOM CO., LTD. owns the copyright of this manual.
- Unauthorised copying and/or reproducing of all or part of this manual is prohibited.
- If you have any suggestions or doubts about this Manual, please contact the retailer whom you purchased the product from.
- The specifications and appearance of this product may be changed without prior notice for product improvement purposes.
- We shall bear no responsibility for any device failure or malfunction of other devices resulting from the use of this product.
- When exporting this product, check the export regulations for the country of origin.
- Windows and Windows logo are either trademarks or registered trademarks of Microsoft Corporation in the United States and/or other countries.
- macOS is a trademark of Apple inc., registered in the U.S. and other countries.
- Company names, product names, and other names in this manual are either trademarks or registered trademarks.

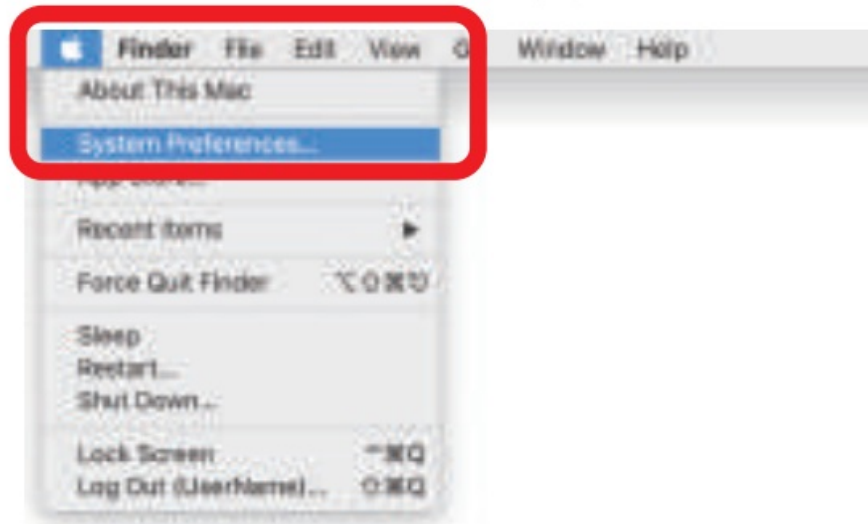
## For macOS

Keyboard types can be selected from “Keyboard Setup Assistant” under “Keyboard” preferences.

Or, when “Keyboard Setup Assistant” starts up when the keyboard is connected, follow the steps below from step 4 to set the keyboard type to “JIS (Japanese)”.

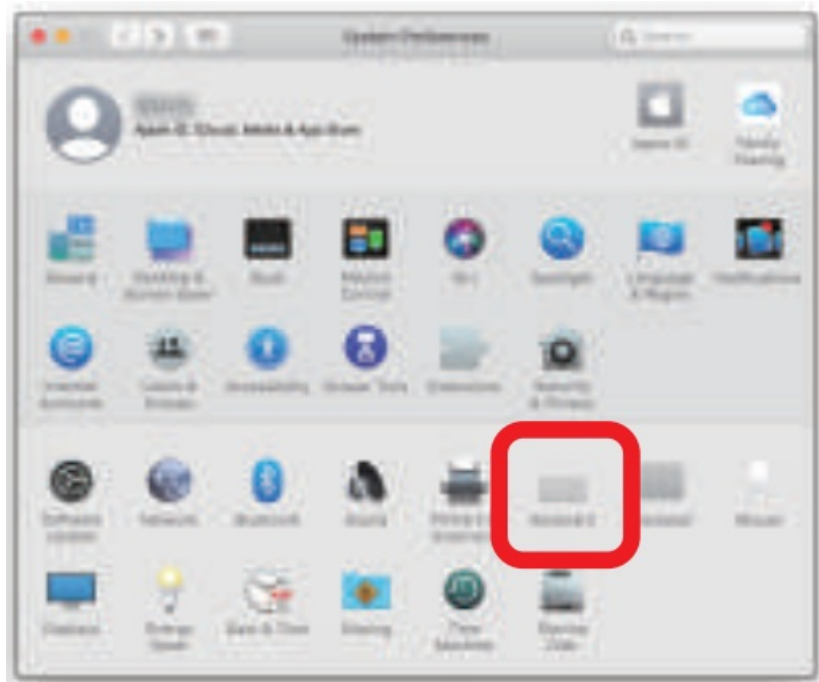
1. Click “System Preferences...” under the Apple menu.

The System Preferences window will appear.



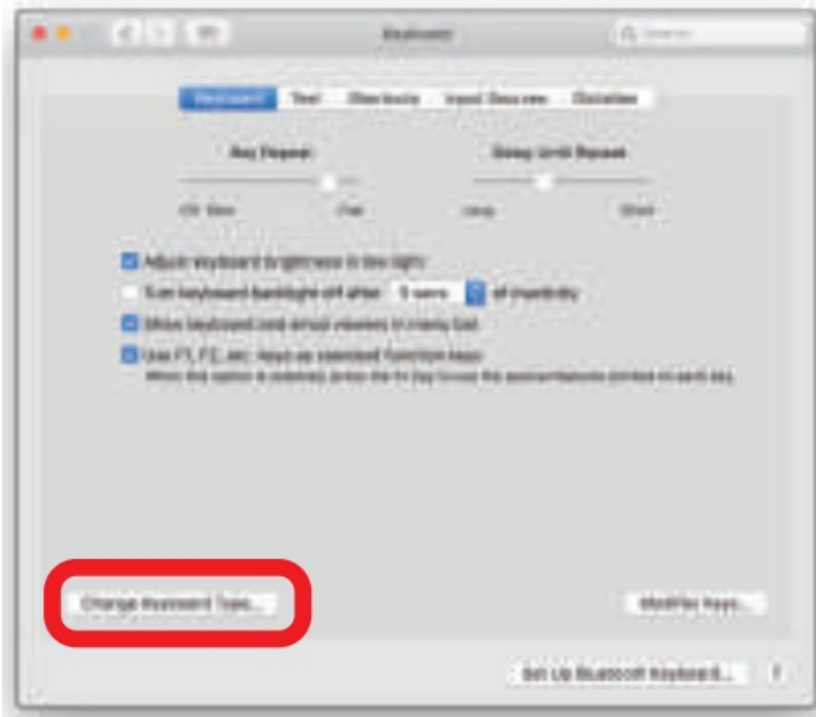
2. Click on “Keyboard”.

The keyboard preferences window will appear.



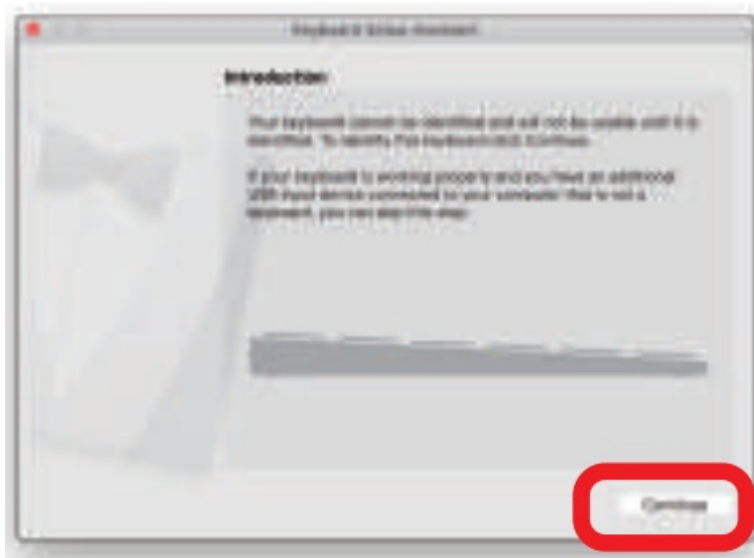
3. Click on “Change Keyboard Type...”

“Keyboard Setup Assistant” will start up.



**“Keyboard Setup Assistant” will start up.**

4. Click “Continue”.



5. Press the key on the right of the left Shift key on the connected keyboard.

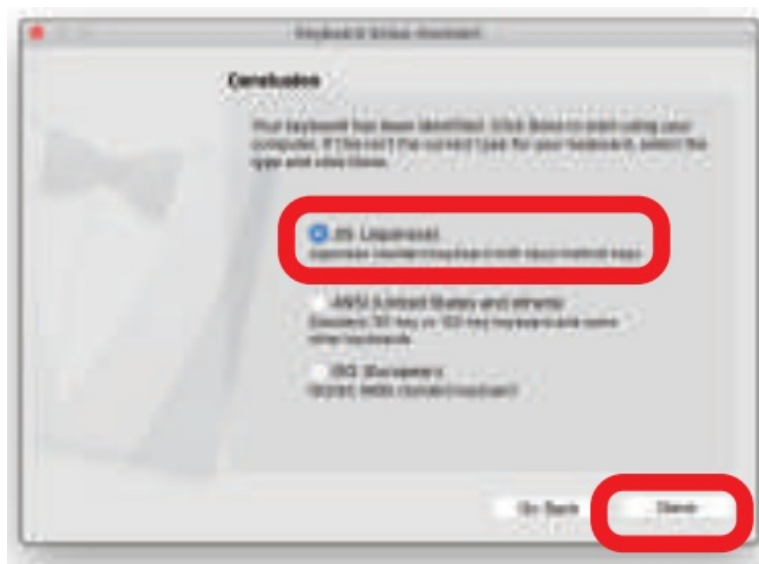


6. Press the key on the left of the right Shift key on the connected keyboard.



7. Select “JIS (Japanese)”. Click “Done”.

The connected keyboard will be correctly recognized as a Japanese keyboard.



Keyboard Setup Guide, 2nd edition, January 19, 2021

A customer who purchases outside Japan should contact the local retailer in the country of purchase for enquiries. In “ELECOM CO., LTD. (Japan)”, no customer support is available for enquiries about purchases or usage in/from any countries other than Japan. Also, no foreign language other than Japanese is available. Replacements will be made under stipulation of the Elecom warranty, but are not available from outside of Japan.

Keyboard Setup Guide, 2nd edition, January 19, 2021

**ELECOM**

©2021 ELECOM Co., Ltd. All Rights Reserved.

**Documents / Resources**



**[ELECOM FDM106 Wireless Keyboard And Mouse Combo](#)** [pdf] User Manual  
FDM106 Wireless Keyboard And Mouse Combo, FDM106, Wireless Keyboard And Mouse Co  
mbo, Keyboard And Mouse Combo, And Mouse Combo, Mouse Combo

## References

- [E ELECOM USA](#)
- [E ELECOM GLOBAL](#)
- [E Standards Certification - ELECOM Global | \\_\\_\\_\\_\\_](#)
- [E ELECOM USA](#)
- [E ELECOM GLOBAL](#)
- [E Standards Certification - ELECOM Global | \\_\\_\\_\\_\\_](#)
- [E \\_\\_\\_\\_\\_ - ELECOM WEB SITE!](#)