



Elechelf JC-07 Portable Blender Instruction Manual

[Home](#) » [elechelf](#) » Elechelf JC-07 Portable Blender Instruction Manual 

Contents

- [1 Elechelf JC-07 Portable Blender](#)
- [2 Product Usage Instructions](#)
- [3 SPECIFICATIONS](#)
- [4 COMPONENTS LIST](#)
- [5 OPERATION INSTRUCTIONS](#)
- [6 CLEANING](#)
- [7 Technical Support](#)
- [8 Documents / Resources](#)
 - [8.1 References](#)
- [9 Related Posts](#)



Elechelf JC-07 Portable Blender



Specifications

- Product Name: Portable Blender
- Model: JC-07
- Capacity: 350ml
- Power: 55W
- Working Power: DC 7.4V
- Battery Capacity: 2*1500mAh
- Motor: DC 5V, 18000rpm
- Jar Material: Food Grade and BPA Free PCTG
- Blade Material: SUS304
- Weight/Product Size: 477g/8.9*8.6*21cm (1.05lbs/3.5*3.38*8.27inch)
- Charging Time: 3-4 Hours
- Blade Size: 1.5*1.5cm(0.6*0.6inch)

Product Usage Instructions

Charging the Portable Blender

To use the portable blender, it needs to be charged first.

Follow the steps below to charge the blender:

1. Connect the provided USB cable to the charging port of the blender.
2. Plug the other end of the USB cable into a power source such as a computer, power bank, or wall adapter.
3. The LED indicator on the blender will start blinking, indicating that it is being charged.
4. Once fully charged, the LED indicator will stop blinking and remain solid.

Preparing Ingredients

Before using the portable blender, make sure to prepare your ingredients properly:

- Wash fruits, vegetables, or any other ingredients you plan to blend.
- Cut the ingredients into small pieces to ensure smooth blending.

Assembling the Portable Blender

Follow the steps below to assemble the portable blender:

1. Remove the base of the blender by twisting it counterclockwise.
2. Add your desired ingredients into the blending jar, ensuring not exceed the maximum capacity of 350ml.

Blending Process

Once the portable blender is fully charged and assembled, you can start blending your ingredients:

1. Hold the blender firmly with one hand, ensuring a secure grip.
2. Press and hold the power button located on the front of the blender.
3. Tilt the blender slightly to activate the blending process.
4. Gently shake the blender in an up-and-down motion to ensure thorough blending.
5. Continue blending until you achieve the desired consistency.

Cleaning and Maintenance

After each use, it is important to clean and maintain the portable blender properly:

1. Remove the blender base and blade assembly from the jar.
2. Rinse the jar, blade assembly, and base with warm water and mild detergent.
3. Use a soft brush or sponge to remove any stubborn residue.
4. Wipe the blender base with a damp cloth.
5. Allow all parts to air dry before reassembling.

FAQ (Frequently Asked Questions)

Q: How long does it take to charge the portable blender fully?

- **A:** The portable blender takes approximately 3-4 hours to charge fully.

Q: Can I blend hot liquids in the portable blender?

- **A:** No, the portable blender is not suitable for blending hot liquids. It is recommended to only blend cold or room temperature ingredients.

Q: Is the blade assembly dishwasher safe?

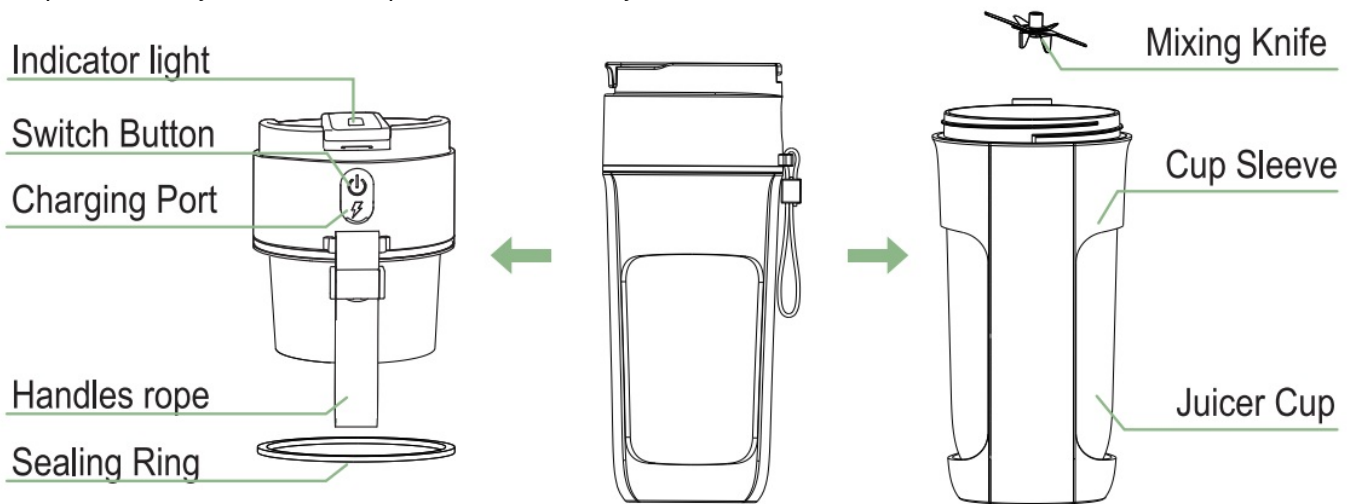
- **A:** No, the blade assembly should be hand-washed. It is not dishwasher safe.

SPECIFICATIONS

Product Name:	Portable Blender
Model:	JC-07
Capacity:	350ml
Power:	55W
Working Power:	DC 7.4V
Battery Capacity:	2*1500mAh
Motor:	DC 5V 18000rpm
Jar Material:	Food Grade and BPA-Free PCTG
Blade Material:	SUS304
Weight/Product Size:	477g/8.9*8.6*21cm (1.05lbs/3.5*3.38*8.27inch)
Charging Time:	3-4 Hours

COMPONENTS LIST

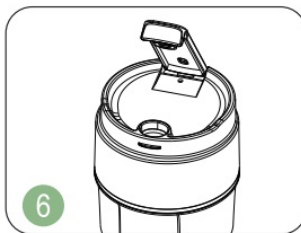
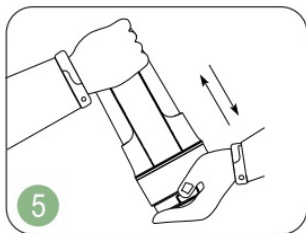
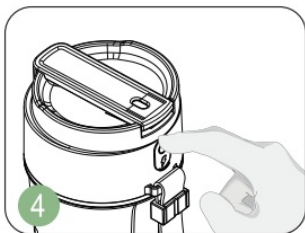
The picture is only for reference, please make the object the standard.



OPERATION INSTRUCTIONS



1. Cut the ingredients into chunks at about 1.5*1.5cm(0.6*0.6inch) If the ingredients have a kernel, very hard, with thick skin, or with a hard shell, please remove them first.
2. Fill the ingredients into the blend jar, then fill some water or milk, to make sure that the ingredients never exceed the 'max' mark.
3. Screw the main engine onto the cup, the white light flashes once, it is proved that the main engine has been screwed in place.

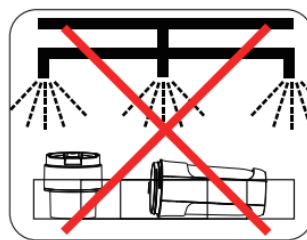
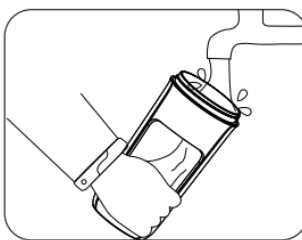
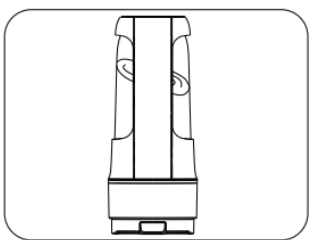
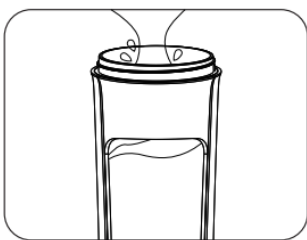


4. Double press the blender button. The white light is on then the machine starts blending; when finished, the light will turn off.
5. Turn the product upside down, and shake the product lightly for better mixing.
6. After blending, the product will automatically enter the standby state, pull out the silica gel to drink, or insert a straw to drink directly.

Notice: When the product cannot be started and the indicator light flashes red, the product is out of power. Insert the USB cable into the charging port (applicable to various 5V power supplies); When the product is fully charged, the white indicator light of the product is always on.

CLEANING

1. Pour water into the juice cup, assemble the main body to the cup, and start the machine; the water flow from the stirring will automatically clean.
2. After the machine stops, pour out the water in the cup to complete the cleaning.
 - If there is any residue, it can be rinsed with water.
3. Do not use the dishwasher for cleaning, it will cause the machine to deform and not work.



Technical Support

- **UK Importer:** PHONES LTD
- **Address:** 3RD FLOOR, 21 HILL STREET, HAVERFORDWEST, SA61 1QQ
- **Manufacturer:** Foshan Speedfrog Electronic Technology Co., Ltd
- **Address:** #203B of 2nd floor, East Building, Phase2 GIDC, North 1 Sanle
- **Road,** Beijiao Town, ShundeDistrict, Foshan City, Guangdong Province
- **Sea&Mew Accounting Ltd**
- **Electric Avenue Vision 25, London, Enfield EN3 7GD**
- **Billy Han E-mail:** info@seamew.net

- Web: www.elechelf.com
 - Read this instruction carefully before using
-

Documents / Resources

	Elechelf JC-07 Portable Blender [pdf] Instruction Manual JC-07 Portable Blender, JC-07, Portable Blender, Blender
--	--

References

-  [Elechelf Official Site - Buy Home & Kitchen Appliances Online](#)
- [User Manual](#)