



## elechelf C1h5vRlfSCL Portable Blender Instruction Manual

[Home](#) » [elechelf](#) » elechelf C1h5vRlfSCL Portable Blender Instruction Manual 



### PORTABLE BLENDER INSTRUCTION MANUAL

Web: [www.elechelf.com](http://www.elechelf.com) Read this instruction carefully before using

#### Contents

- [1 IMPORTANT SAFETY INSTRUCTIONS](#)
- [2 SPECIFICATIONS](#)
- [3 COMPONENTS LIST](#)
- [4 OPERATION INSTRUCTIONS](#)
- [5 CLEANING](#)
- [6 PROTECTION MODE AND INDICATION EXPLANATIONS](#)
- [7 TROUBLESHOOTING](#)
- [8 Documents / Resources](#)
  - [8.1 References](#)

## IMPORTANT SAFETY INSTRUCTIONS

When using electrical appliances, basic safety precautions should always be followed including the following:

1. Read all instructions before using.
2. To protect against risk of electrical shock, do not put main body(motor) in water or any liquid.
3. When cleaning the product, please make sure the switch power is off and the silica gel at the charging port is plugged. Do not wash the engine in water to prevent water from entering the unit and damaging electronic

components.

4. Always ensure your switch the juicer to the off position and the motor has stopped completely before disassembling.
5. Do not put any parts into the dishwasher.
6. Do not use appliance for other intended purpose.
7. Do not use appliance with meat, fruit pits, frozen fruit, large seeds.
8. Do not put the product into heating appliances such as microwave ovens, ovens, etc., please keep away from high temperature.
9. Please do not squeeze the appliance for more than 5 times in succession, so as to avoid excessive load of electronic components causing heat and affecting appliance service life.
10. Appliance is equipped with overload protection function. If the knife is jammed due to the large size of the food materials, appliance will be shut down for protection, and the red indicator will be on for 5 seconds. It can be restarted after removing the food materials of the knife.
11. All parts of the appliance shall not be sterilized with hot water or microwave oven with the temperature of more than 140°F to avoid deformation and damage.
12. . Do not use steel velvet, abrasive cleaner or corrosive liquid to clean the appliance.
13. Do not turn the appliance upside down or start the appliance when the straw is still inserted into the main engine or the silica gel plug at the water port is not tightly plugged.
14. If no one takes care of it, always disconnect the power supply of the appliance before assembly, disassembly or cleaning; and do not let children use the appliance without any care.
15. In order to avoid a hazard due to inadvertent resetting of the thermal cutout, this appliance must not be supplied through an external switching device, such as timer, or connected to a circuit that is regularly switched on and off by the utility.
16. Never disassemble the blend jar or remove the vacuum lid while the blade is running.
17. Dispose of waste household appliance products in accordance with relevant regulations.

**Warning:**

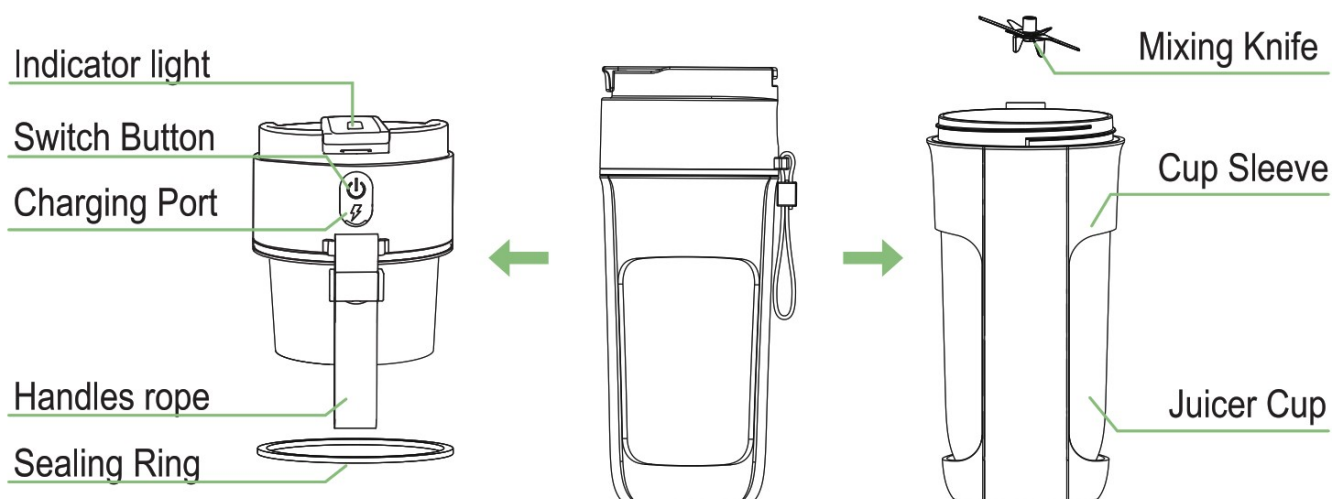
- For hard fruit and food, add a small amount of water, milk, or other liquid.
- Never use the appliance while recharging.
- Never put the appliance into any liquid.
- Never start the appliance before filling with ingredients.
- Never put the appliance in microwave or dishwasher.

**SPECIFICATIONS**

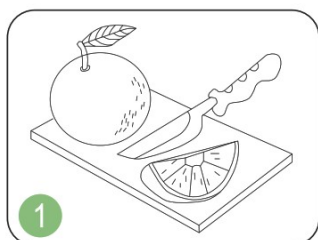
Product Name:	Portable Blender
Model:	JC-07
Capacity:	350m1
Power:	55W
Recharging Power:	DC 7.4V
Battery Capacity:	1500mAh
Motor:	DC 5V 113000rpm
Jar Material:	Food Grade and BPA Free PCTG
Blade Material:	SUS304
Weight/Product Size:	1.0lbs/ 3.513.3813.27inch
Charging Time:	3-4 Hours

## COMPONENTS LIST

The picture is only for reference, please make the object as the standard.

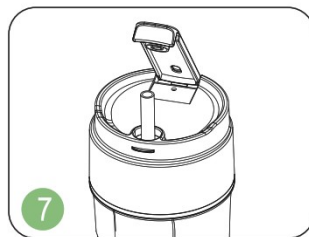
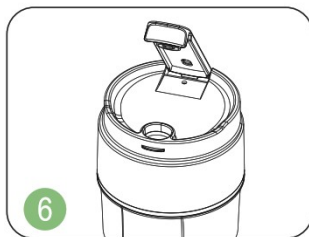
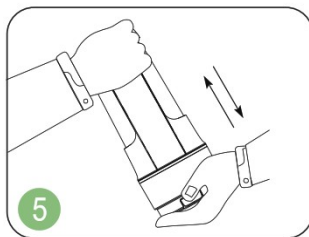
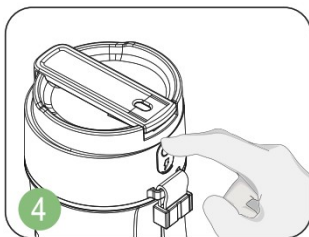


## OPERATION INSTRUCTIONS



1. Cut the ingredients into chunks at about 0.6" to 0.8 inch. If ingredients have kernel, or very hard, or with thick skin, or with hard shell, please remove them first.
2. Fill the ingredients into the blend jar, then fill some water or milk, to make sure that the ingredients is never exceed the 'max' mark.
3. Screw the main engine onto the cup, the white light flashes once, it is proved that the main engine has been

screwed in place.

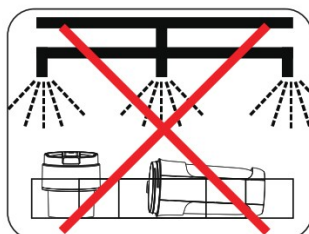
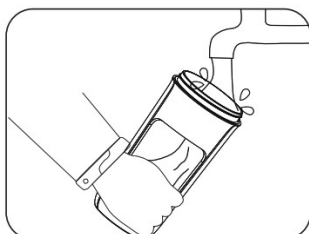
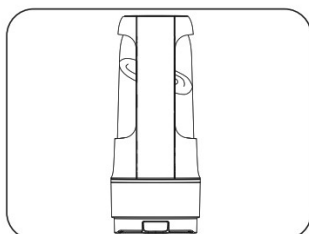
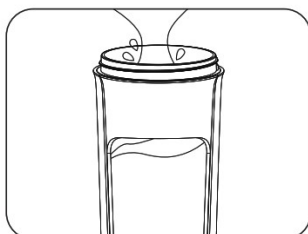


4. Double press the blender button. The white light is on then the machine starts blending; when finished, the light will turn off.
5. Turn the product upside down, shake the product lightly for better mixing.
6. After blending, the product will automatically enter the standby state, pull out the silica gel to drink, or insert a straw to drink directly.

**Notice:** When the product cannot be started and the indicator light flashes red, the product is out of power. insert the USB cable into the charging port (applicable to various 5V power supplies); When the product is fully charged, the white indicator light of the product is always on.

## CLEANING

1. Pour water into the juice cup, assemble the main body to the cup, and start the machine; the water flow from the stirring will automatically clean.
2. After the machine stops, pour out the water in the cup to complete the cleaning. If there is any residue, it can be rinsed with water.
3. Do not use the dishwasher for cleaning, it will cause the machine to deform and not work.



## PROTECTION MODE AND INDICATION EXPLANATIONS

### Protective Function Tips

Priority Rank	Description	LED Indication	Elimination method
1	The juice cup is not assembled properly	The light flashes in red and white	Assemble the juice cup and main body again
2	Ingredients are overfilled	The red light stays on for 5 seconds	Reduce ingredients
3	The battery is low	The light flashes in red rapidly	Recharge the device
4	Does not start the machine with correct operation	The light flashes in white for 3 times and does not work	Double press the blender button

## Notice:

1. The LED light will indicate what happens to the appliance by priority.
2. That the juice cup is not assembled properly ranks first, and continuous uses for long time ranks last. For example, when the significance the juice cup is not assembled properly and battery low appear at the same time, LED light will flash in red and white; When you assemble the juice cup properly, the light will stays red for 5 seconds to indicate the battery is low.
3. Charging Mode: The LED light shows red while charging and shows white when charging is completed.


## TROUBLESHOOTING

Problem	Possible Causes	Elimination method
Appliance does not work	-The blade is blocked -The juice cup is not assembled properly -The battery power is low	-Remove the ingredients that are stuck -Assemble the juice cup and main body again -Recharge the device
Ingredients cannot be blended	-Overfilled or not enough ingredients -Ingredients are too big or too hard	-The ingredient capacity should be less than the max position but covering the blade -Cut into small pieces, fill with some water or other liquid
Light continues flash but appliance not work	-Incorrect assembly of the juice cup -Battery is low -Overloaded cup	-Reassemble the juice cup -Recharge -Remove the excess ingredients

[service@elechelf.com](mailto:service@elechelf.com)



## Documents / Resources

	<a href="#">elechelf C1h5vRlfSCL Portable Blender</a> [pdf] Instruction Manual C1h5vRlfSCL, 429, C1h5vRlfSCL Portable Blender, Portable Blender, Blender
---	---

## References

- [🌐 Elechelf Official Site - Buy Home & Kitchen Appliances Online](#)

Manuals+.