



ELECBEE DT3CS WIFI+BT Module User Manual

[Home](#) » [ELECBEE](#) » ELECBEE DT3CS WIFI+BT Module User Manual 



User manual
Supplementary information

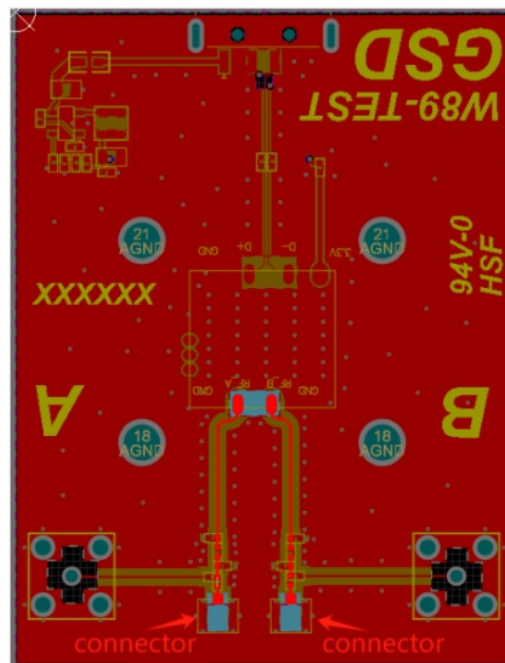
Contents

- [1 DT3CS WIFI+BT Module](#)
- [2 Documents / Resources](#)
 - [2.1 References](#)

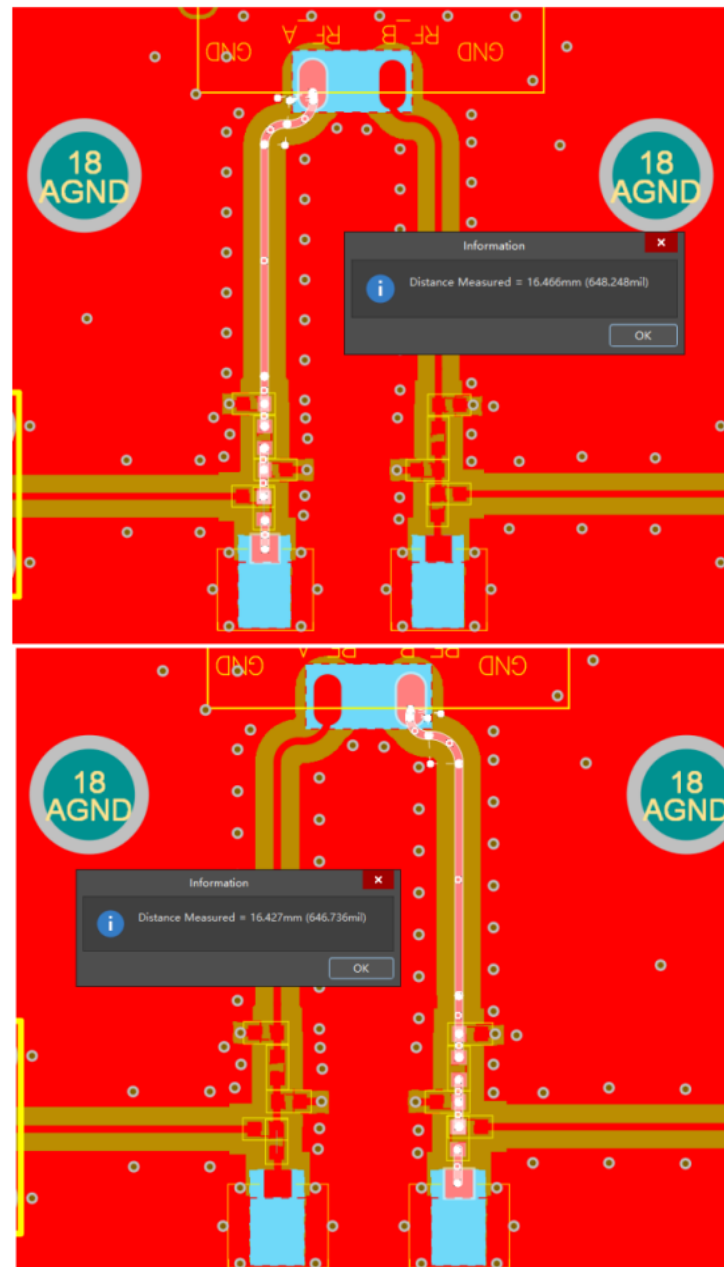
DT3CS WIFI+BT Module

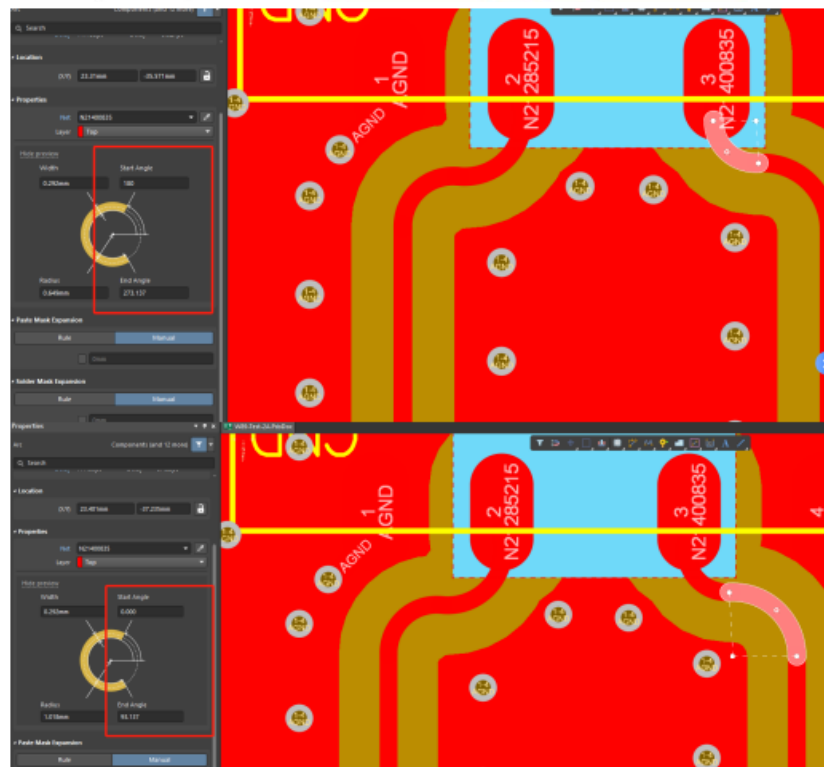
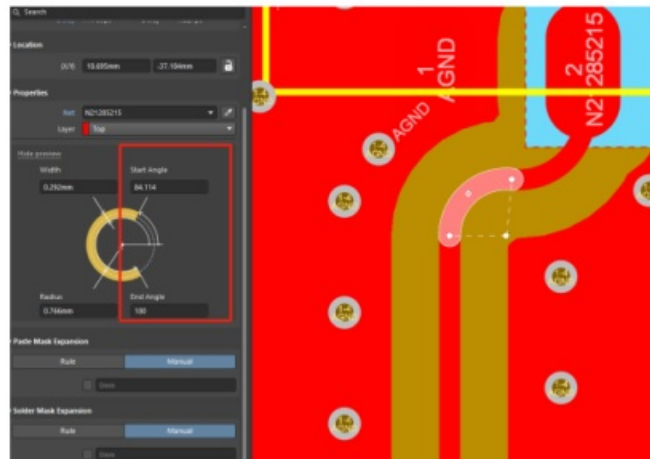
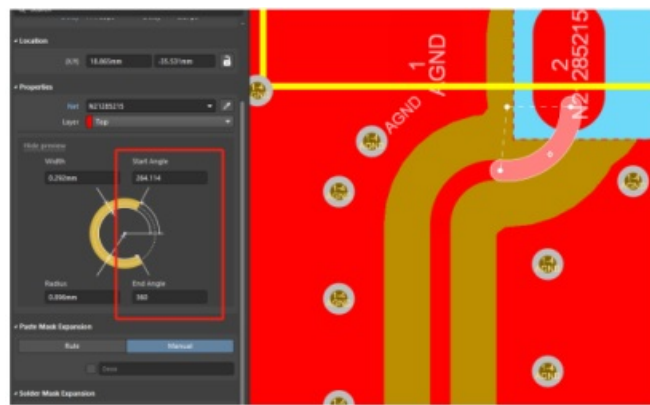
a) Trace layout and dimensions including specific designs for each type:

1. Layout of trace design, parts, antenna, connectors, and isolation requirements:



- Boundary limits of size, thickness, length, width, shape(s), dielectric contain, and impedance must be clearly described for each type of antenna: PCB Antenna trace antenna Dimension:



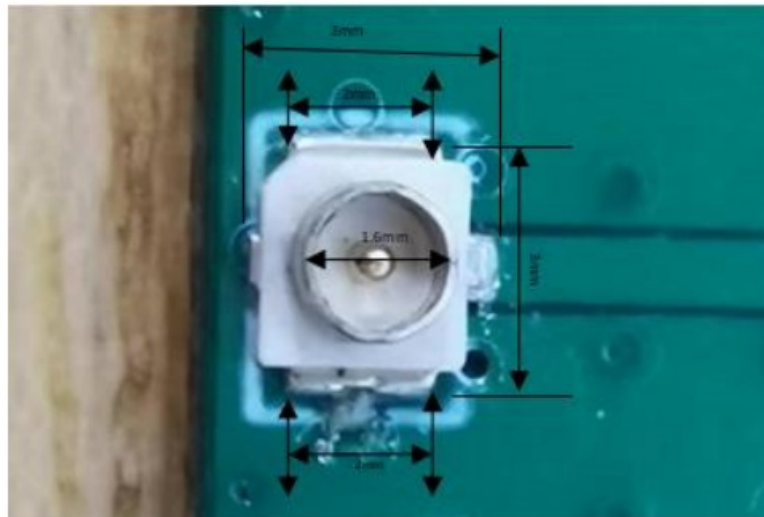


Note:

1. RF trace between module RF pinout to antenna width is 0.292mm.
2. RF trace between module and antenna impedance is 50ohm.

IPEX connector information:

Size:



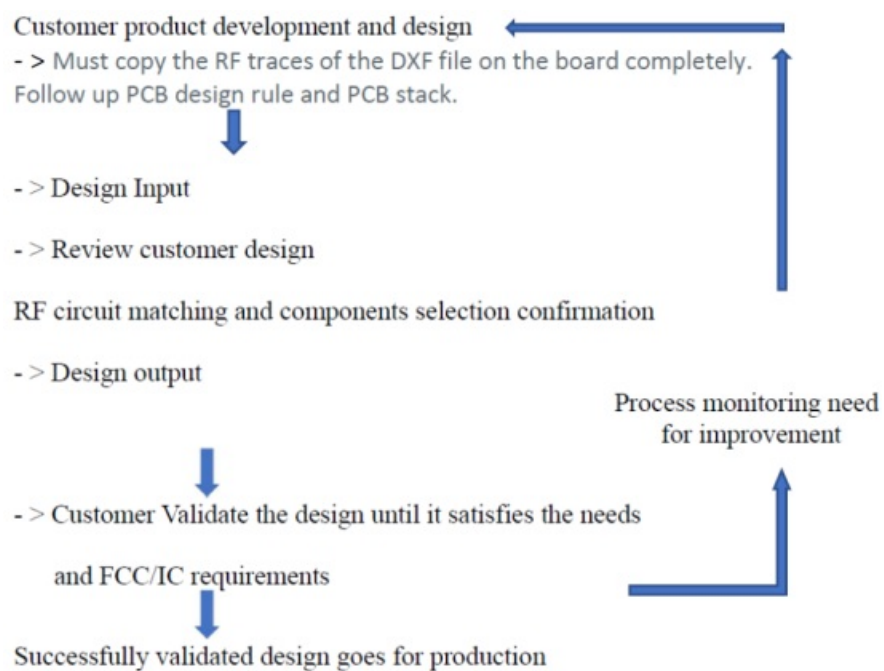
Connector 1	I IPEX	Male pin	500	I Surface mount	varies
-------------	--------	----------	-----	-----------------	--------

b) Appropriate parts of manufacturers and specifications:
Information about devices on RF lines:

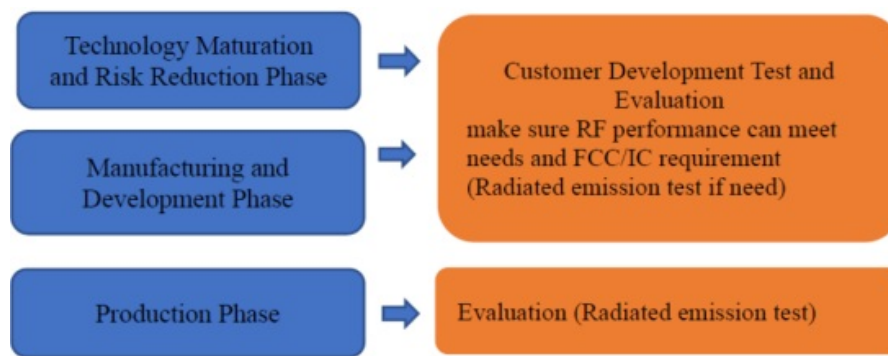
Parts list	Parts number	Size	Manufacturer
Tuning 1/00	/	0201	varies

If customers completely refer to our antenna design for their own design, the antenna performance should also be the same as ours.

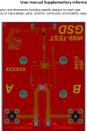
C) Test procedures and design verifications:



d) Production test procedures for ensuring compliance



Documents / Resources

	<p>ELECBEE DT3CS WIFI+BT Module [pdf] User Manual DT3CS WIFI BT Module, DT3CS, WIFI BT Module, Module</p>
---	---

References

- [User Manual](#)

[Manuals+](#), [Privacy Policy](#)

This website is an independent publication and is neither affiliated with nor endorsed by any of the trademark owners. The "Bluetooth®" word mark and logos are registered trademarks owned by Bluetooth SIG, Inc. The "Wi-Fi®" word mark and logos are registered trademarks owned by the Wi-Fi Alliance. Any use of these marks on this website does not imply any affiliation with or endorsement.