



ELCOMPONENT SPC Pro-II-Enviro Unique Solution User Guide

[Home](#) » [ELCOMPONENT](#) » ELCOMPONENT SPC Pro-II-Enviro Unique Solution User Guide 

Contents

- 1 ELCOMPONENT SPC Pro-II-Enviro Unique Solution
- 2 Product Information
- 3 Product Usage Instructions
- 4 OVERVIEW
- 5 CONNECTING UP
- 6 DOWNLOADING
- 7 CONTACT
- 8 Documents / Resources
 - 8.1 References



ELCOMPONENT SPC Pro-II-Enviro Unique Solution



Product Information

The SPCPro is a multi-function logging device designed for electrical measurements. It is equipped with a power indicator, a multi-function display, a logging indicator, a USB connection socket, and a sleep button. The device comes with PowerPackPro software for data analysis and survey setup. For detailed specifications and a comprehensive user manual, refer to the PowerPackPro Disk or download it from www.spcloggers.com.

Product Usage Instructions

Setting Up the Unit:

1. Install the PowerPackPro software on your PC.
2. Connect the unit to a mains supply using the provided cable.
3. Switch on the SPC Pro by briefly pressing the 'Reset/Start' button. The display will illuminate to indicate that the unit is powered up. Press the 'Sleep' button to switch off the unit.
4. Connect the logger to the USB port of your PC and open PowerPackPro. Cancel any 'Bluetooth Scan' window if it appears. The PC will automatically detect the logger within a few seconds.
5. In PowerPackPro, highlight the logger in the tree diagram and right-click to select 'Set Up Survey'. The set-up window will appear.
6. Select the desired survey duration and interval, then click 'Set Logger'. The logger is now set and can be switched off. Close the PC software.

Connecting Up:

- **WARNING:** Refer to the connection information in the User Manual before making electrical measurements with the logger.
- **Voltage Connection:** Simply plug your SPC Pro into a wall socket.
- **Current Connection:** The SPCPRO is suitable for use on both single-phase and three-phase supplies. Connect the flex-type CTs by clipping them around the conductors according to the diagrams and pictures provided. Make sure to correctly identify cables for accurate results. Refer to Appendix 2 of the Manual for UK wiring connections or additional information if working outside the UK. Once connected, start your survey by pressing and holding the 'Start/Reset' button for 5 seconds. The display will count down to the survey start, and the 'Logging' LED will flash every few seconds to indicate logging. To end your survey, press and hold the 'Sleep' button for five seconds. The display will count down to the survey close. Surveys will also end automatically if the programmed duration is reached or if the power is removed and the battery life is exceeded.

Downloading:

The SPC Pro can be downloaded using PowerPackPro as follows:

1. Open PowerPackPro on your PC and establish communication with the logger.
2. Click 'Download Data' and follow the on-screen instructions to download and display your survey.

For full details on using the software, refer to the user manual on the CD. If you encounter any issues during setup or downloading, ensure that the CD is present in your CD drive and that the SPC Pro is connected to your PC.

Follow the instructions provided to troubleshoot further.

Note: Orientate the CTs with the arrow pointing towards the load as shown.

OVERVIEW

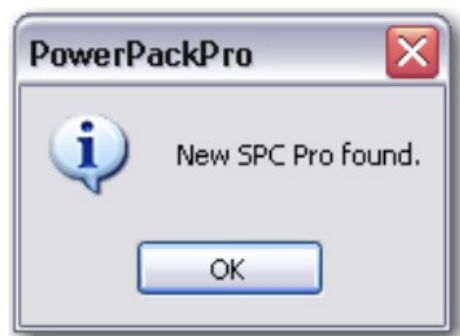
SPCPRO II Environmental – ‘At a Glance’

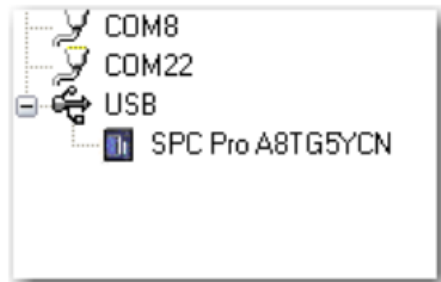


SETTING THE UNIT UP

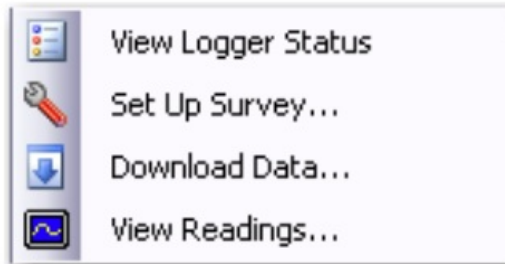
Note: For detailed PC Specification and Full User Manual please see PowerPackPro Disk or www.spcloggers.com download.

Install the PowerPackPro software onto your PC. Plug the unit into a mains supply using the cable provided. Switch the SPC Pro on by briefly pressing the 'Reset/Start' button. The display will illuminate to indicate that the unit is powered up. The unit is switched off by pressing the 'sleep' button. Connect the SPC Pro (powered up) to an unused USB port on your PC. Windows will then configure the USB interface for first time use. A 'found new hardware' dialogue box will confirm your new hardware is now ready for use. If the hardware interface is not successfully loaded, windows may ask for a disk, or for permission to carry out a web search or the relevant driver. The driver is present on CD supplied with the product under the 'Drivers' Folder. In rare cases, particularly on Windows 7 machines, the PC may not recognise that the SPC Pro has been connected. See Additional Notes. With the logger connected to the USB port of your PC, open PowerPackPro. If a 'Bluetooth Scan' window appears, this should be cancelled. Within a few seconds the logger will be found by the PC.

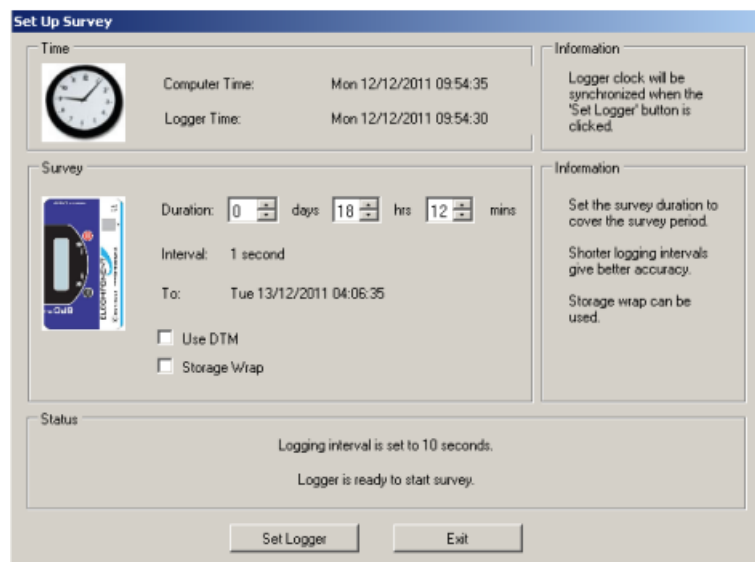




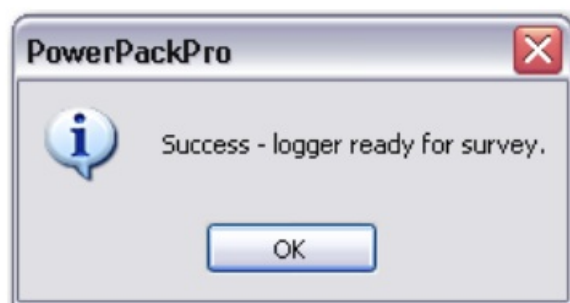
Highlight the Logger and right click to select 'Set Up Survey'



The set-up window will then appear



Select the desired survey duration, "interval" will show the appropriate logging interval for the duration set, and click 'Set Logger'.



The logger is now set, and can be switched off at this point. The PC Software can be closed down.

CONNECTING UP

WARNING: Refer to connection information in the User Manual before using the logger to make electrical

measurements.

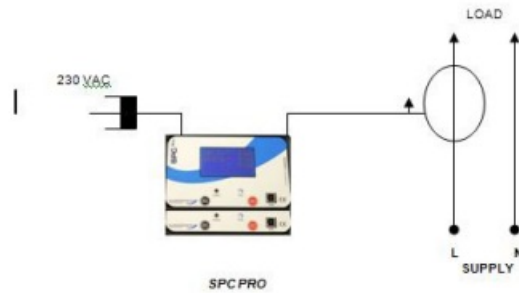
Voltage Connection:

Simply plug your SPC Pro into a convenient wall socket.

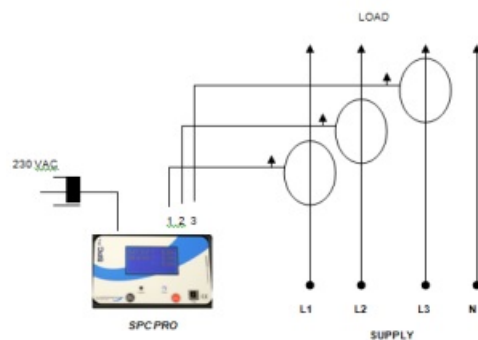
Current Connection:

The SPCPRO is suitable for use on both single phase and three phase supplies. Current measurement connections are made by clipping the flex-type CTs around conductors as shown in the following diagrams and pictures.

NOTE: It is important to be able to identify cables correctly when carrying out electrical surveys. Failure to do so may compromise the accuracy of results obtained. Please refer to Appendix 2 of the Manual for information on UK wiring connections. If you are working outside the UK, additional information may be required.



SINGLE PHASE CONNECTION



THREE PHASE CONNECTION

- **NOTE:** Orientate the CTs with the arrow pointing towards the load as shown.
- **NOTE:** It is essential that the phase cables are correctly identified when connecting the flex CTs. (See Appendix 2 for more information on phase identification).
- **NOTE:** It is not necessary to have a wall socket voltage connection available to carry out a survey. The SPCPro will continue to operate on battery power for up to two weeks on a fully charged battery. In this case, power and energy values are based on user-defined references.

Once connected, start your survey by pressing and holding the 'start/reset' button for 5 seconds. Note that the display will 'count down' to the survey start. Logging is confirmed by the 'logging' led flashing every few seconds. To end your survey, press and hold the sleep button for five seconds. Note that the display will 'count down' to the survey close. Surveys will end automatically if the programmed survey duration is reached, or if the power is removed and the battery life exceeded.

DOWNLOADING

SPC Pro is downloaded as follows:

Open PowerPackPro on the PC and establish communication with the logger as detailed above. Click 'download data' and follow the on screen instructions to download and display your survey. Full details of the software can be found in the user manual on the CD.

ADDITIONAL NOTES


If this happens, ensure that the CD is present in your CD drive and the SPC Pro is connected to your PC. Then proceed as follows:

- Open "Control Panel" from the Windows 'Start' button.
- In XP, select 'System' and click the 'Hardware' tab, and then 'Device Manager'. In Vista & W7 select 'Device Manager' directly.
- From the Device Manager list, select 'Other Devices'. Note: There will be a yellow warning triangle showing, which may be identified as 'SPC Pro'. Click on the yellow triangle, and click 'Update Driver'
- Select the option which allows the driver to be installed from a location on the PC (not the automatic search).
- Browse to the CD location [DRIVE]:\V.2.**.*\SPC—Drivers\ and click 'next'.
- Click install, and exit when complete. Note: It may be necessary to load a second driver for the COM port. If the Device Manager list shows a second yellow triangle, click on this and repeat the above procedure

CONTACT

- Unit 5 Southmill Trading Centre, Southmill Road, Bishop's Stortford, Herts. CM23 3DY
- 01279 503173
- www.spcloggers.com.
- www.elcomponent.co.uk.

Documents / Resources

	<p>ELCOMPONENT SPC Pro-II-Enviro Unique Solution [pdf] User Guide SPC Pro-II-Enviro Unique Solution, SPC Pro-II-Enviro, Unique Solution, Solution</p>
---	---

References

- [Energy Management Systems, Energy Monitoring Solutions.](#)
- [Energy Management Systems, Energy Monitoring Solutions.](#)
- [Home - SPC Data Loggers](#)
- [Home - SPC Data Loggers](#)