



EKSA Telecom H1 Telecom Trucker Bluetooth Headset with Microphone User Manual

[Home](#) » [EKSA Telecom](#) » EKSA Telecom H1 Telecom Trucker Bluetooth Headset with Microphone User Manual



Contents

- [1 EKSA Telecom H1 Telecom Trucker Bluetooth Headset with Microphone](#)
- [2 Package Contents](#)
- [3 Specifications](#)
- [4 Product Overview](#)
- [5 Operation Guide](#)
- [6 Call Functions](#)
- [7 Call Functions](#)
- [8 Bluetooth Pairing](#)
- [9 Dual Pairing](#)
- [10 Documents / Resources](#)
 - [10.1 References](#)
- [11 Related Posts](#)

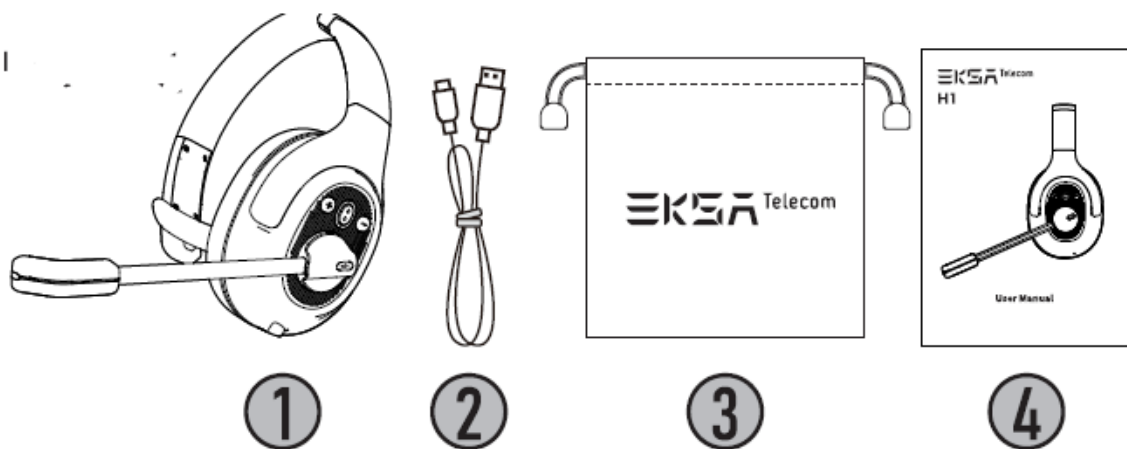


EKSA Telecom H1 Telecom Trucker Bluetooth Headset with Microphone



Package Contents

1. EKSAtelcom H1 Wireless
2. Type-C Charging Cable
3. Carry Pouch
4. User Manual



Specifications



Bluetooth Version: 5.0

Effective Wireless Range: 30 m / 99 fl (Max 50 m / 164 fl without obstacles)

Music time: ,,57 hours (70% volume) Talk Time: ,,30 hours (70% volume) Charging Time: “1.5 hours



Speaker Diameter: 40 mm

Impedance: 32 Q \pm 15%

Sensitivity: 114 \pm 3 dB



Frequency Response: 20 Hz – 20 kHz

Size: 2.7 mm* 1.85 mm

Sensitivity: -25 \pm 1 dB

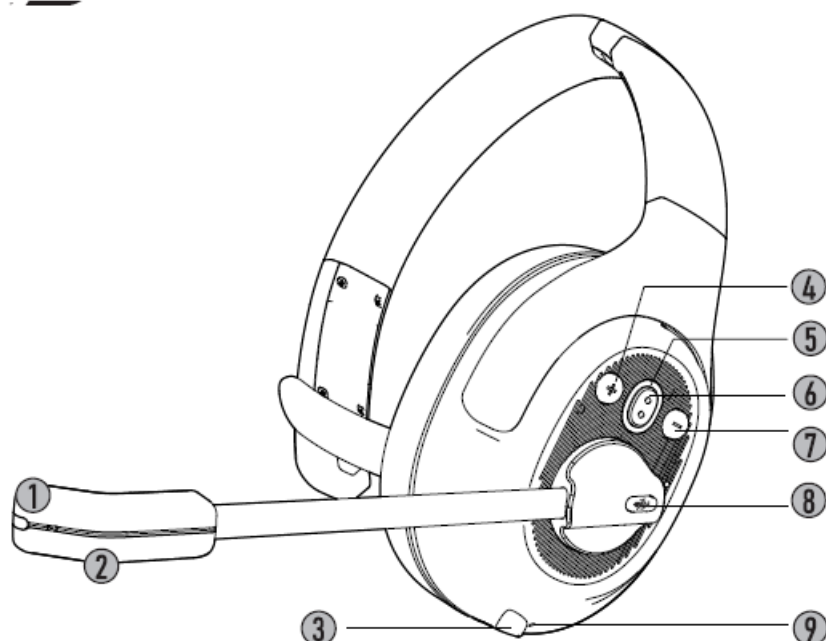


Frequency Response: 100 Hz – 10 kHz

Impedance: 2.2 kQ Polar Pattern: Omnidirectional

Mic: EKSAtelecom Voice Pure Technology

Product Overview



Call Indicator

- EKSA telecom Voice Pure Technology (ID = Type-C Charging Port)
- Volume+
- Q Bluetooth Indicator
- 8 Multi-Function Button (MFB)
- 0 Volume –
- Q Mic Mute Button
- Charging Indicator

Operation Guide

Multi-Function Button

- press for 3 seconds: Headphone on/off
- Click: Play/Pause
- Triple Click: Voice Assistant USiri

Volume Button



- **Click:** Volume+ / –
- **Press** for 2 seconds to C9 nexUprev1ous track

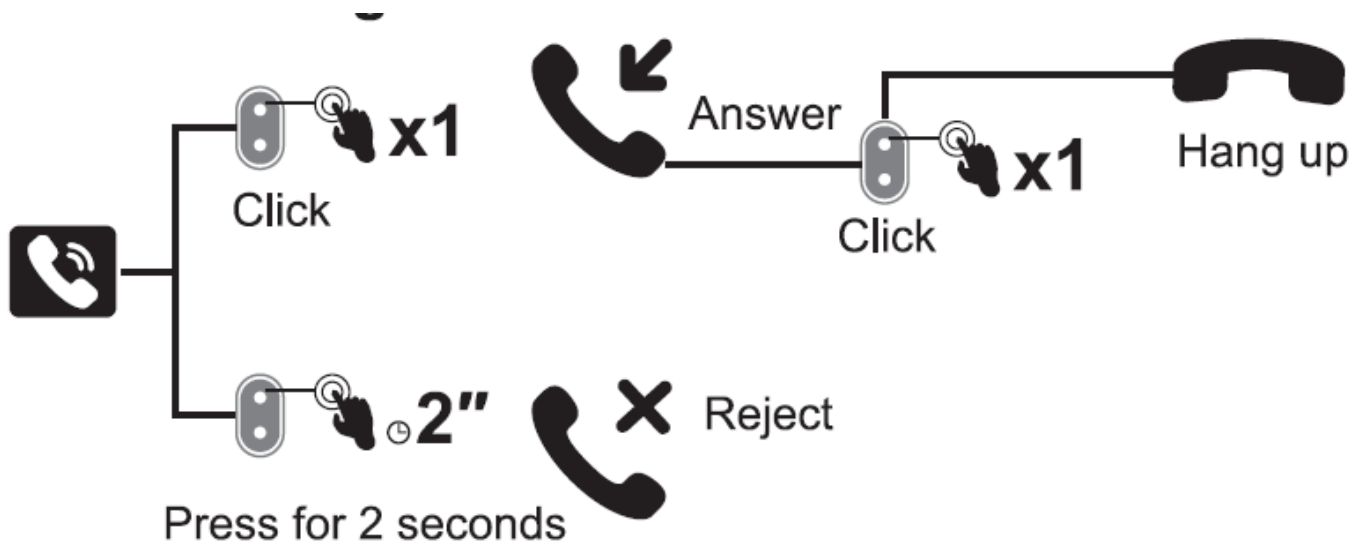
Mic Mute Button



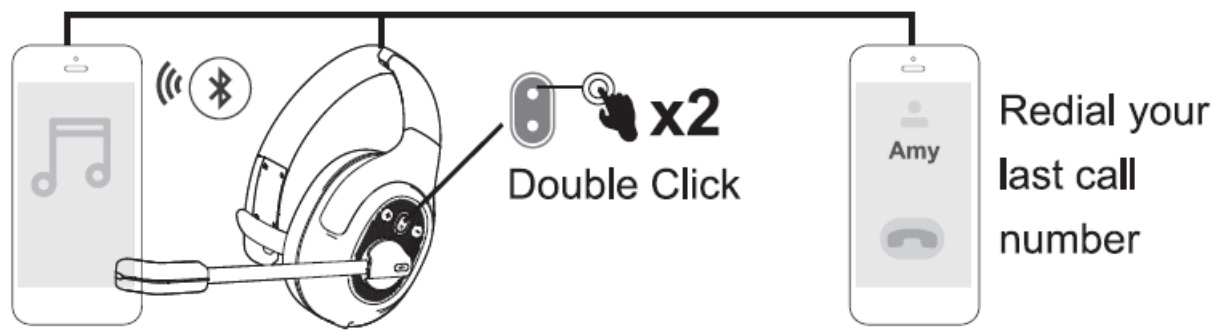
- **Click:** Microphone on/off

Call Functions

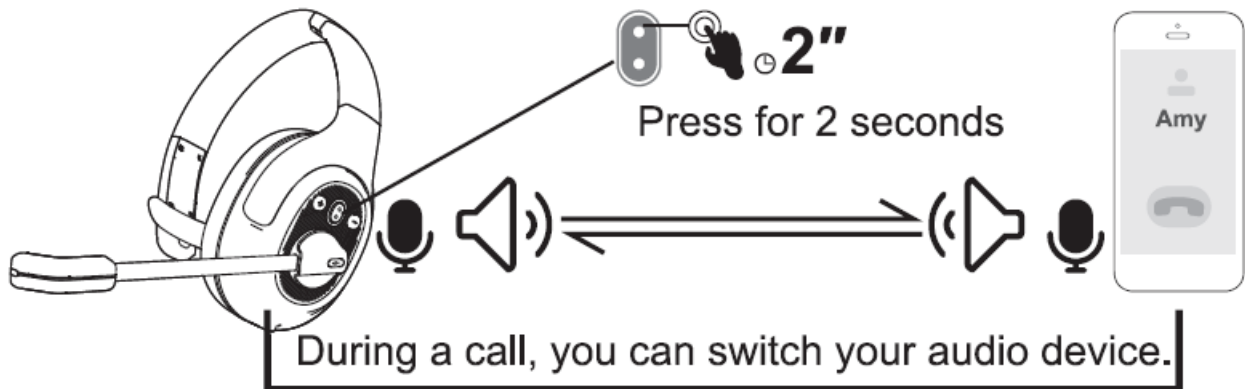
Three-Way Calling



Redial

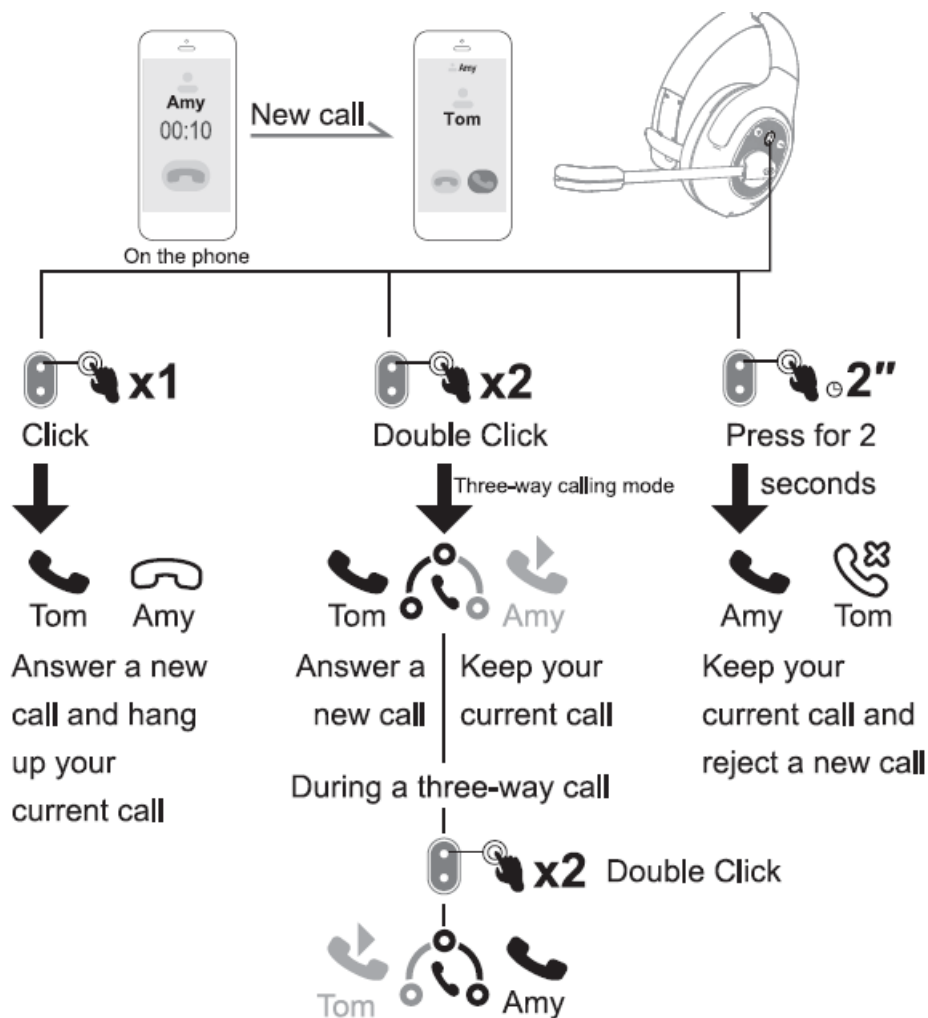


Audio Switching

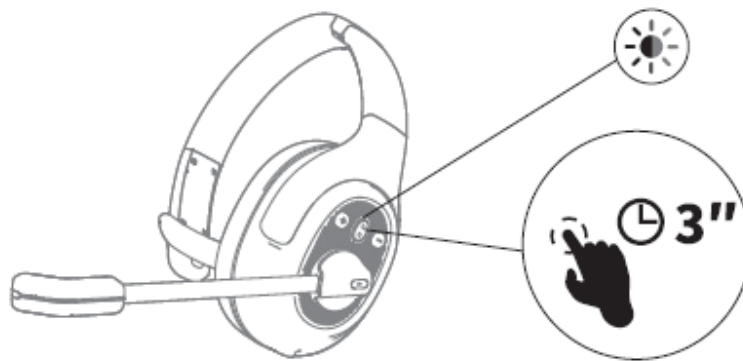


Call Functions

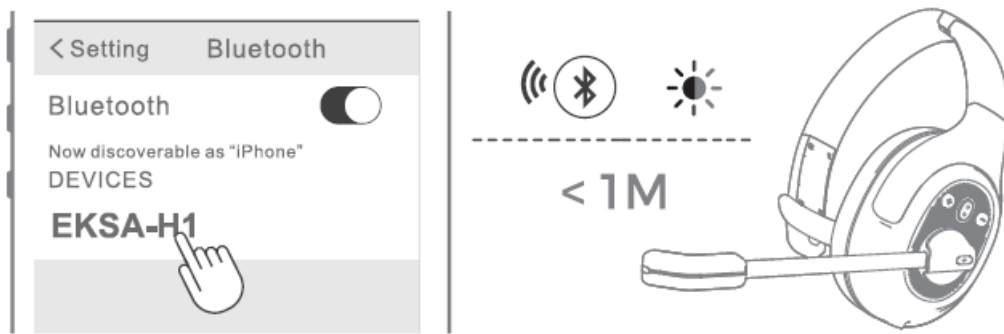
Three-Way Calling



Bluetooth Pairing



1. Turn on EKSAtelcom H1, until its Bluetooth indicator flashes alternately between red and blue, indicating that the headset is in pairing mode.
2. Turn on the Bluetooth of your device, activate the search feature, and select "EKSA-H1". After pairing, the Bluetooth indicator flashes slowly in blue light with a voice prompt "your headset is connected", confirming a successful connection.



Note

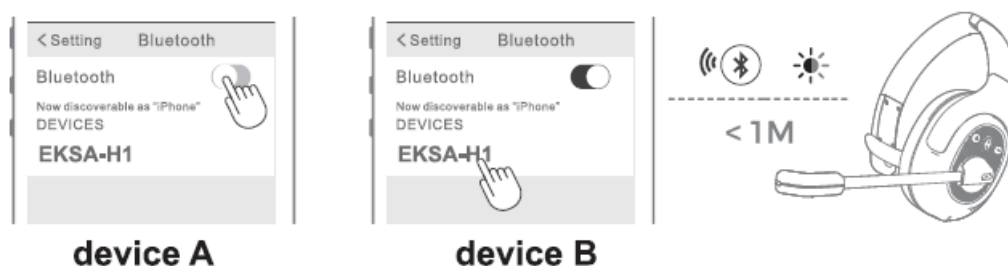
1. Keep the distance between the EKSAtelecom H1 and your device within 1 meter.
2. If necessary, the pin code to complete pairing is "0000"
3. While in pairing state, if a connection cannot be established within 10 minutes, the headset will turn off automatically.
4. When the headset is turned on again, it will connect to the last connected device automatically.
5. Compatibility issues may arise when connecting directly to a computer via Bluetooth. Preferably with an adapter (not included).

To connect to a new device, turn off the Bluetooth of the currently paired device and follow the above steps to connect successfully to a new device.

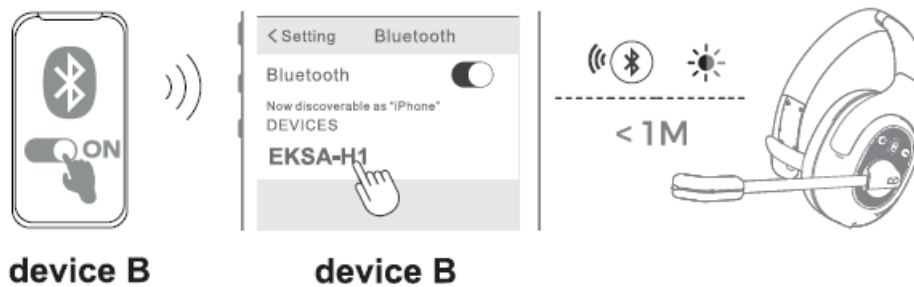


Dual Pairing

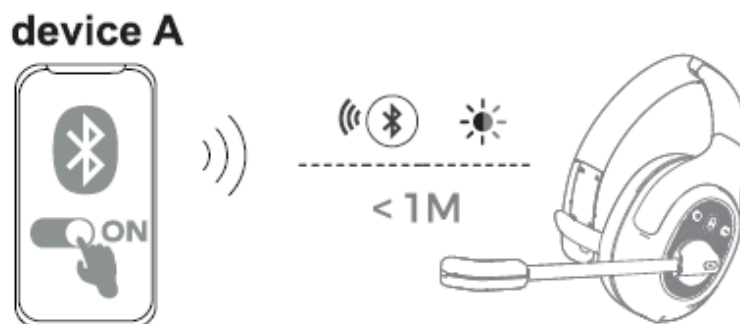
1. After successfully connecting the EKSAtelecom H1 to device A, turn off the Bluetooth of device A. The headset's Bluetooth indicator flashes in red and blue alternately to signify pairing mode.




2. Turn on the Bluetooth of device B, activate search mode, and connect to "EKSA-H1".



3. Turn on the Bluetooth of device A to connect with “EKSA-H1”. This puts both devices A and Bin a simultaneous connection with “EKSA-H1”.



Documents / Resources

	<p>EKSA Telecom H1 Telecom Trucker Bluetooth Headset with Microphone [pdf] User Manual H1 Telecom Trucker Bluetooth Headset with Microphone, H1, Telecom Trucker Bluetooth Headset with Microphone, Trucker Bluetooth Headset with Microphone, Bluetooth Headset with Microphone, Headset with Microphone, Microphone</p>
---	--

References

- [User Manual](#)