

EJEAS V6 Pro Bluetooth Intercom Headset



EJEAS V6 Pro Bluetooth Intercom Headset User Manual

[Home](#) » [EJEAS](#) » EJEAS V6 Pro Bluetooth Intercom Headset User Manual 

Contents

- 1 EJEAS V6 Pro Bluetooth Intercom Headset
- 2 Product Information
- 3 Product Usage Instructions
- 4 OVERVIEW
- 5 Product Function
- 6 Installation Diagram
- 7 Operation of phone
- 8 Operation of Intercom
- 9 Precautions for use
- 10 EUC Remote Controller (Optional)
- 11 Documents / Resources
 - 11.1 References

EJEAS®

EJEAS V6 Pro Bluetooth Intercom Headset



Product Information

Specifications

- **Product Name:** V6pro Motorcycle Helmet Intercom System
- **Maximum Talking Distance:** 800 meters
- **Bluetooth Range:** 10 meters
- **Functions:** Automatic-receive phone calls, waterproof, HD-Voice

Product Usage Instructions

Power On/Off:

To power on the device, long press the MOTOR/A button for about 2 seconds until the main device light flashes. To power off, simply press the Power off button.

Connecting with Phone (GPS/MP3):

Long press the Phone button for 5 seconds until the red & blue lights flash. Turn on your phone's Bluetooth and search for V6 to connect. Once paired successfully, the intercom's blue light will flash.

Last Number Redial:

After connecting the phone, long press the Phone button for 3 seconds to automatically dial the last called number.

Receiving/Rejecting Calls:

To receive a call, wait for 5 seconds without any operation. To reject a call, simply press the Phone button.

Music Playback:

To play or pause music, short press the Phone button. Volume control can be adjusted by pressing Volume + to increase volume and Volume – to decrease volume. Long press Volume + or Volume – for 2 seconds to skip to the next or previous track.

Charging:

When charging, the red light will stay on. Once fully charged, the red light will turn off.

Clear Pairing:

To restore factory settings and clear pairing information, press the Phone button and B button simultaneously. The indicator light will flash red three times and blue once.

Operation of Intercom

The V6 supports up to six riders using the device. Two riders can talk simultaneously, with one main device paired with up to 5 sub-devices. The main device can choose one sub-device (A/B/C/D/E) to talk to at a time. The main device cannot communicate with all 5 sub-devices simultaneously.

Pairing with Another Device:

To pair with another device (A/B/C/D/E), long press the MOTOR button of the main device and the desired sub-device simultaneously for about 5 seconds until both devices' lights flash. Once paired successfully, communication can take place between the two devices.

Frequently Asked Questions (FAQ)

- **How far is the maximum talking distance for the V6pro intercom system?**

The maximum talking distance is 800 meters, but in outdoor environments, it ranges from 300 meters to 800 meters.

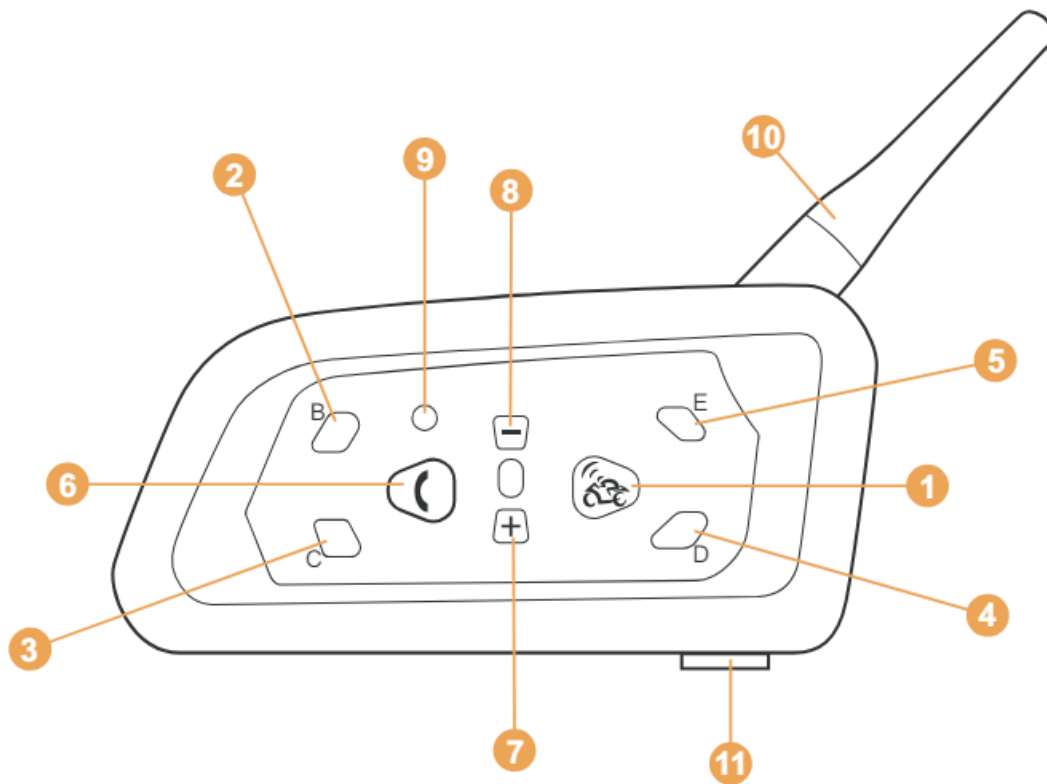
- **Can the V6pro intercom system automatically receive phone calls?**

Yes, the V6pro has the function of automatic-receiving phone calls for added convenience and safety.



More
Languages

OVERVIEW

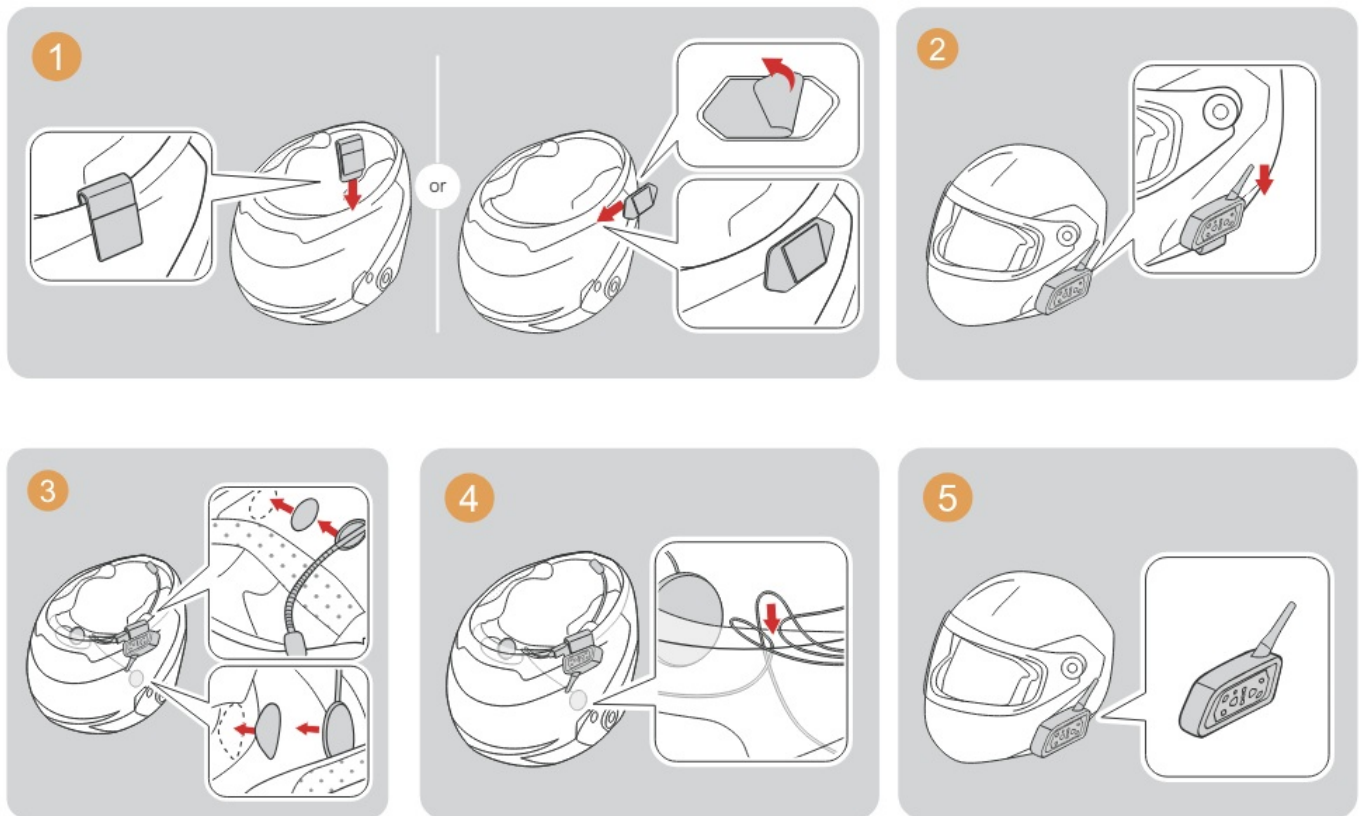


1. MOTOR/A button(Power on)
2. B button
3. C button
4. D button
5. E button
6. Phone button
7. Volume +
8. Volume –
9. Power off
10. Antenna
11. Earphone interface / USB charger interface

Product Function

V6 is a performance stable Helmet Bluetooth Intercom. Maximum talking distance is 800 meters, in general, at outdoor environment the talking distance is 300 meters to 800 meters. At same time, it is also as high performance bluetooth headset (range of 10 meters). It has functions of automatic-receive phone calls, using more convenient and safe. Using newest production process and ultrasonic structure without screw, also it has functions of waterproof, HD-Voice. Designed for motorcycle riders, making sure safely riding.

Installation Diagram



Operation of phone

1. Power on/Power off

- **Power on:** Long press MOTOR button about 2s then release, main device light flash.
- **Power off:** Press Power off.

2. Connect with phone (GPS/MP3)

Long press Phone button 5s, until red & blue light flash. Turn on phone bluetooth and search bluetooth to connect V6, pairing successfully, intercom's blue light flash. (If GPS/MP3 support bluetooth function, same operation way with phone)

3. Last number redial

After connecting phone, long press Phone button 3s, device will automatic dial phone of the final phone calling number.

4. Receiving a call

When comes a call, without operation 5s, phones will automatic receive.

5. Refuse a call

When comes a call, press Phone button to end call.

6. Play/Suspend music

Short press Phone button (95% compatible with cellphone music play).

7. Volume control

- **Add volume:** Press Volume +
- **Down volume:** Press Volume –

8. Choose music

- **Previous music:** Long press Volume – for 2s
- **Next music:** Long press Volume + for 2s

9. Charging tip

When charging, the red light is always on, after the full charge, the red light is off.

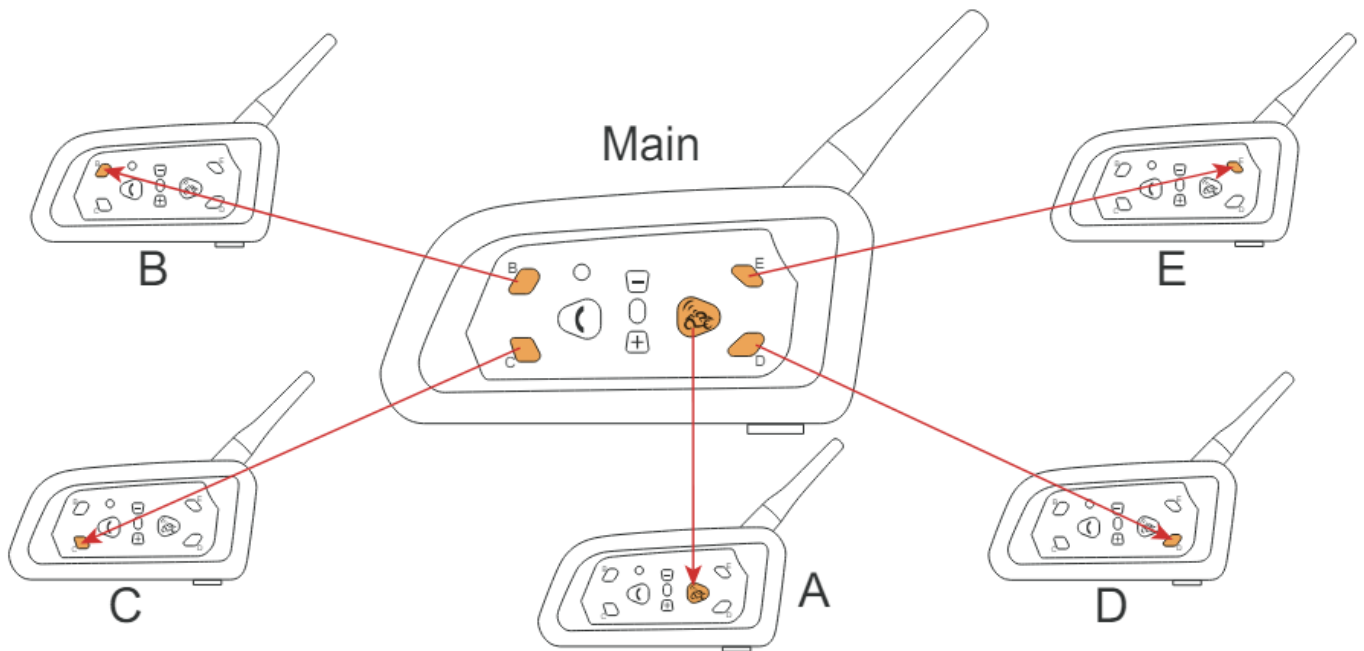
10. Clear pairing (Restore factory settings)

Press Phone button and B button at the same time, the indicator light flashes red three times and blue once.

Operation of Intercom

V6 support six riders use device, two riders talk at the same time, one main device are pair with 5 sub-devices, the main device can choose one to talk from A/B/C/D/E sub-devices.

Attention: The main device can not talk with other 5 devices at same time, it is choose one sub-device to talk. Choose from A/B/C/D/E, press main device's MOTOR/B/C/D/E button to switch, realize two riders talking. The other five sub-devices cannot talk between with each other.



1. Pairing with A device

Long press the MOTOR buttons of main device and A device about 5s together, both device red & blue lights flash. After both of them find each other, one of them will automatically initiate a pairing connection, and the blue light will flash quickly. After a while, the blue light flashes slow simultaneously, two devices can normal talk. To pair the next sub-machine, press the MOTOR buttons first to disconnect.

2. Pairing with B device

Long press the B buttons of main device and B device about 5s together, both device red & blue lights flash. After both of them find each other, one of them will automatically initiate a pairing connection, and the blue light will flash quickly. After a while, the blue light flashes slow simultaneously, two devices can normal talk. To pair the next sub-machine, press the B buttons first to disconnect.

(C device, D device and E device have same pair way as above, pairing relative C button, D button and E button.)

Simply saying: The MOTOR/B/C/D/E buttons on the main device are for pairing with the MOTOR/B/C/D/E buttons on five other subdevices. After pairing, press the Corresponding pairing buttons of main device to talk with other five subdevices.

Eg: When the main device needs to talk to the A sub-device, press the MOTOR button of the main device to connect and talk. If the main device needs to talk to the sub-device B, press the B button of the main device to switch and talk. C/D/E has the same way of operation as above.

Note: The next time use it, don't need to pair it again, just click the MOTOR/B/C/D/E buttons on the main

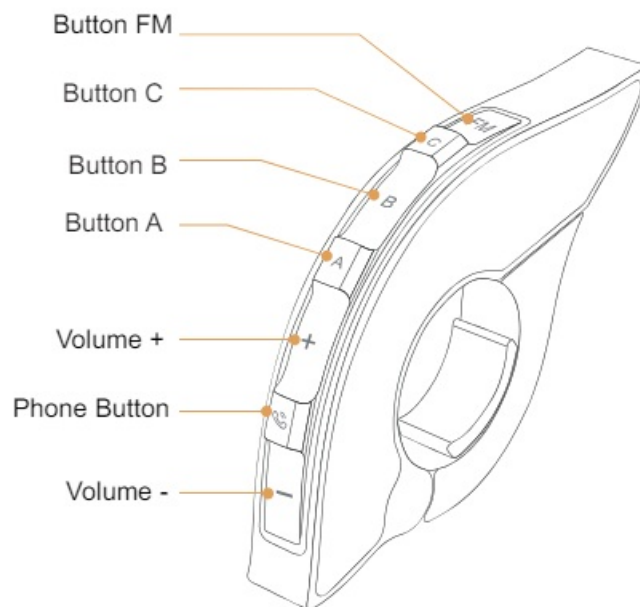
device to connect and talk.

Precautions for use

1. Please install correctly, under raining situation, making sure headphone jack to fully inserted state with devices, to prevent the devices into the water.
2. In order to ensure the battery life, please use the standard charger.
3. In order to ensure the safety of riding, don't recommend to listen music in riding.
4. In the riding state, do not to manually operate the device button, pay attention to safety.
5. In order to ensure the communication distance, it is recommended to use in open areas.

EUC Remote Controller (Optional)

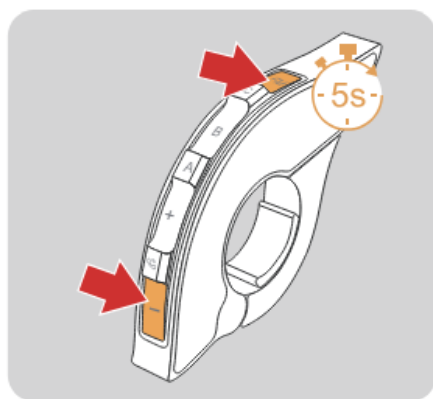
Buttons Introduction



Buttons	Actions	Function
Volume –	Short press	Volume –
	Long press	Previous song when music is playing.
	Double click	None
Phone Button	Short press	Answering a call when it comes in/ On call, hang up/ Music play/pause/ Connect last connected phone when no phone is connected
	Long press	Call rejection Voice assistant
	Double click	Last number redial
Volume +	Short press	Volume +
	Long press	Next song when music is playing
	Double click	None
Button A	Short press	Intercom A pairing
	Long press	Disconnecting the intercom
	Double click	Intercom D pairing
Button B	Short press	Intercom B pairing
	Long press	Disconnecting the intercom
	Double click	Intercom E pairing

Buttons	Actions	Function
Button C	Short press	Intercom C pairing
	Long press	Disconnecting the intercom
	Double click	None
Volume – + Button FM	Super Long Press	Clear EUC handle pairing records

EUC Pairing



1

Long press both <Button FM> and <Volume -> of EUC for 5s to clear the pairing record of EUC.

●● Red light and blue light are on at the same time



2

Long press both <Phone Button> and <Button E> for 5s to enter the handle pairing mode, the red and blue lights flash alternately and quickly.

●● Red light and blue light are on at the same time



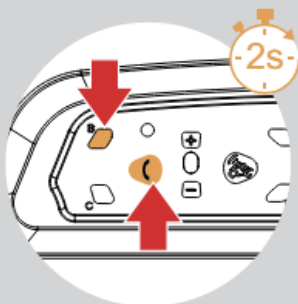
3

Click any button of EUC

Pairing Successfully 🔊 "Du"

(If EUC cannot be successful paired in 2 mins, it will automatically exit the pairing mode.)

Restore Default Settings



Press and hold both <B button> and <Phone button> for about 2s, the red light flashes 3 times quickly to delete the pairing record, and then the intercom will automatically power on again.

● 3 Quick Flashes

? "Di,Di,Di"

Mobile App



- 1 Download and install SafeRiding mobile APP for the first time.




iOS



Andriod



- 2 Press and hold (approx. 5s) <Phone Button> until the red and blue lights flash alternately.
 Red and blue lights alternate quick flash



- 3 Open the APP, click on the Bluetooth icon in the top right corner, the interface shows the name of the intercom device searched, select the intercom device to be connected, and click to connect. (IOS system needs to enter the phone pairing again, in the system settings->Bluetooth, connect audio Bluetooth)

Open the APP the next time you use it. Click the Bluetooth icon in the top right corner and click to select Intercom for connection from the paired devices.


APP provides intercom group, music control, FM control, switch off, check authenticity and other functions.

This device contains licence-exempt transmitter(s)/receiver(s) that comply with Innovation, Science and Economic Development Canada's licence-exempt RSS(s). Operation is subject to the following two conditions:

1. This device may not cause interference.
2. This device must accept any interference, including interference that may cause undesired operation of the device.

www.ejeas.com

Documents / Resources

	<p>EJEAS V6 Pro Bluetooth Intercom Headset [pdf] User Manual V6 Pro Bluetooth Intercom Headset, Bluetooth Intercom Headset, Intercom Headset, Headset</p>
---	--

References

- [User Manual](#)

[Manuals+](#), [Privacy Policy](#)

This website is an independent publication and is neither affiliated with nor endorsed by any of the trademark owners. The "Bluetooth®" word mark and logos are registered trademarks owned by Bluetooth SIG, Inc. The "Wi-Fi®" word mark and logos are registered trademarks owned by the Wi-Fi Alliance. Any use of these marks on this website does not imply any affiliation with or endorsement.