



# EJEAS V4 Plus Motorcycle Intercom System User Manual

[Home](#) » [EJEAS](#) » EJEAS V4 Plus Motorcycle Intercom System User Manual

## Contents [ [hide](#) ]

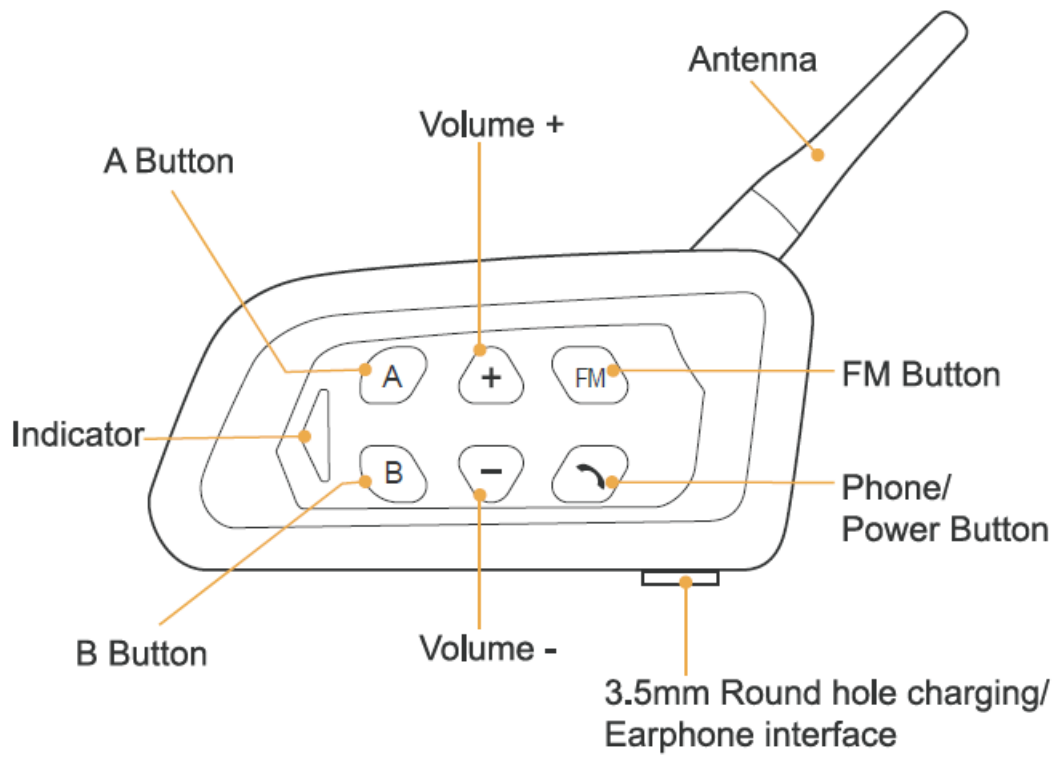
- 1 [EJEAS V4 Plus Motorcycle Intercom System](#)
- 2 [Product Details](#)
- 3 [Product installation](#)
  - 3.1 [Product Operation](#)
  - 3.2 [Factory Reset](#)
- 4 [Bluetooth Intercom](#)
  - 4.1 [2-Way Intercom Pairing](#)
  - 4.2 [4-Way Intercom Pairing](#)
  - 4.3 [Intercom Reconnection](#)
- 5 [Compatible with Old Intercom Pairing](#)
- 6 [Bluetooth Pairing](#)
  - 6.1 [Phone Pairing](#)
  - 6.2 [Phone Reconnection](#)
  - 6.3 [Mobile Phone](#)
  - 6.4 [Music Control](#)
  - 6.5 [FM Radio](#)
- 7 [EUC Remote Control \(Optional\)](#)
- 8 [Documents / Resources](#)
- 9 [Related Posts](#)

# EJEAS

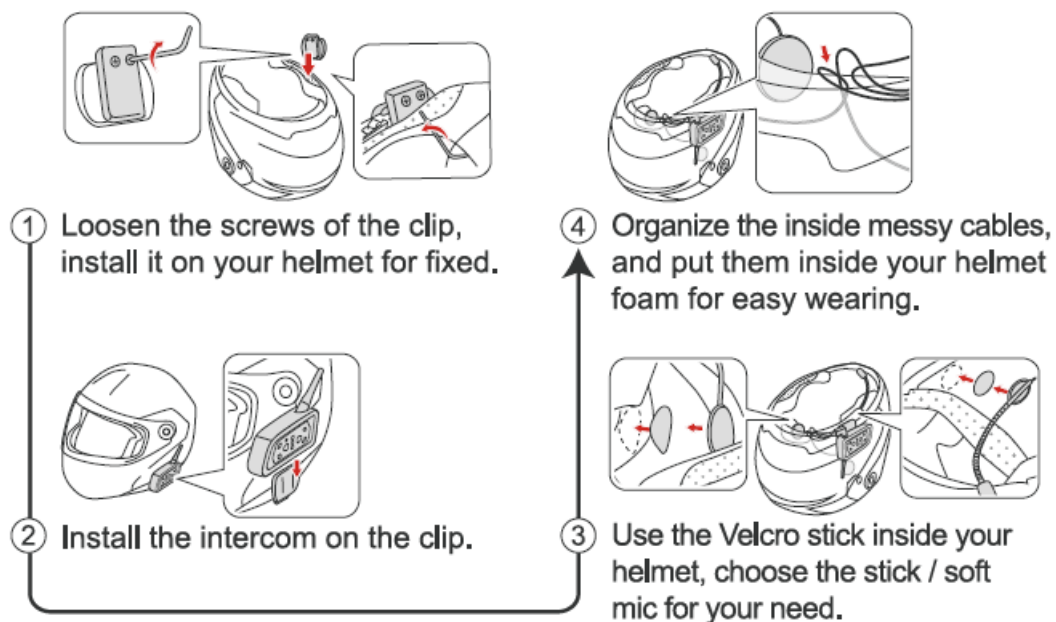
**EJEAS V4 Plus Motorcycle Intercom System**



## Product Details

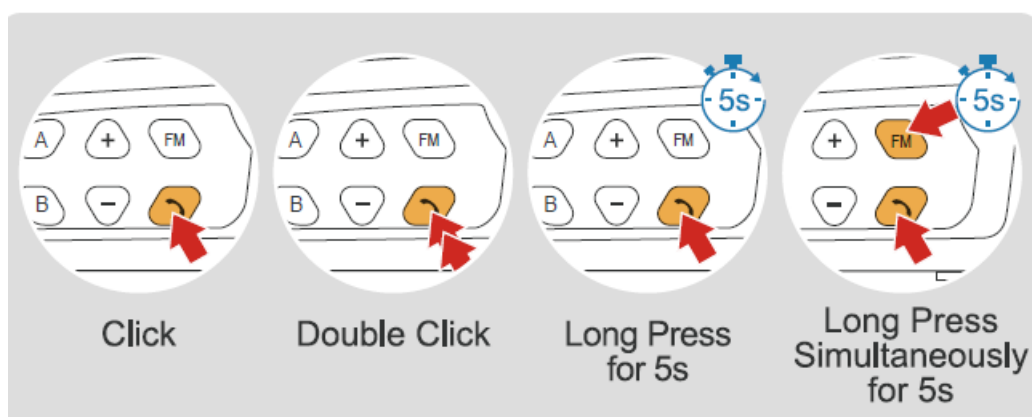


## Product installation



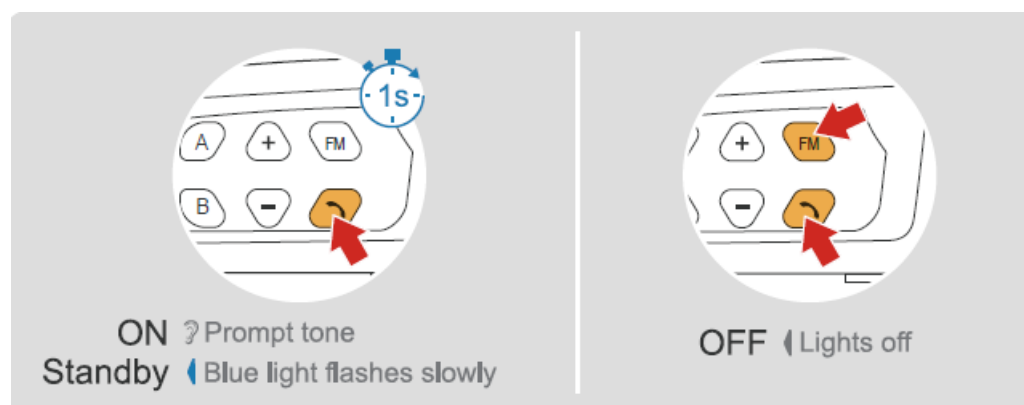
## Product Operation

### Operation Diagram

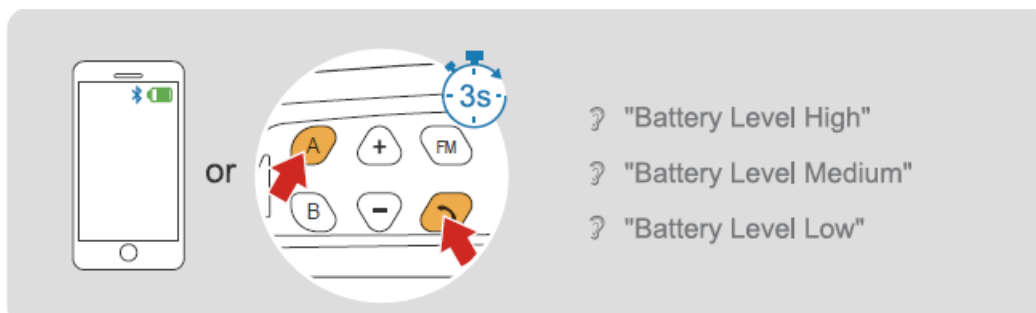


### Basic Operations

Power ON/OFF Please charge it before using

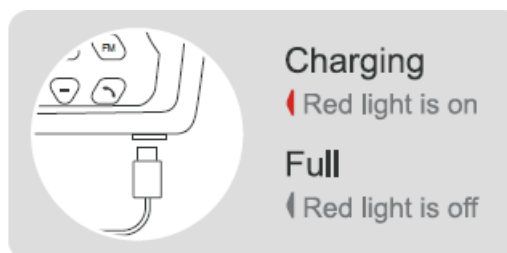
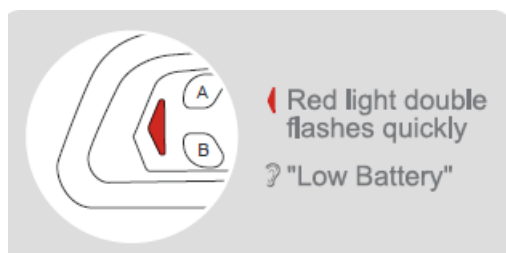


Battery Level



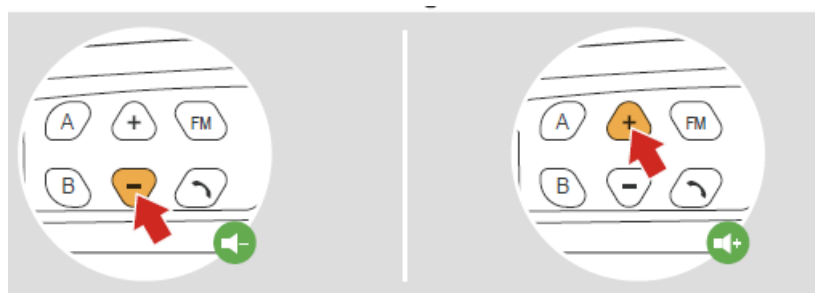
### Low Battery Indication

### Charging Indication



Volume Control FM and intercom can be used at the same time.

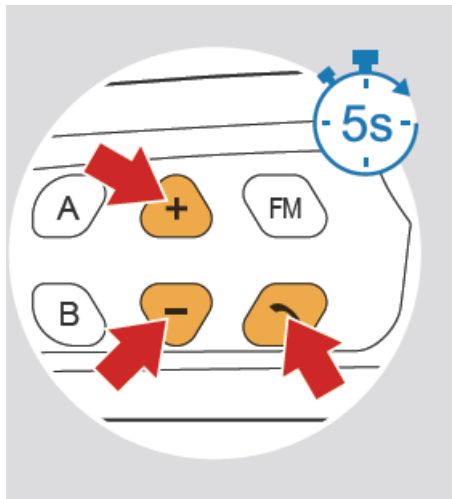
### Intercom/ Calling /Music/ FM



When Intercom & FM use simultaneously, FM volume control



### Factory Reset

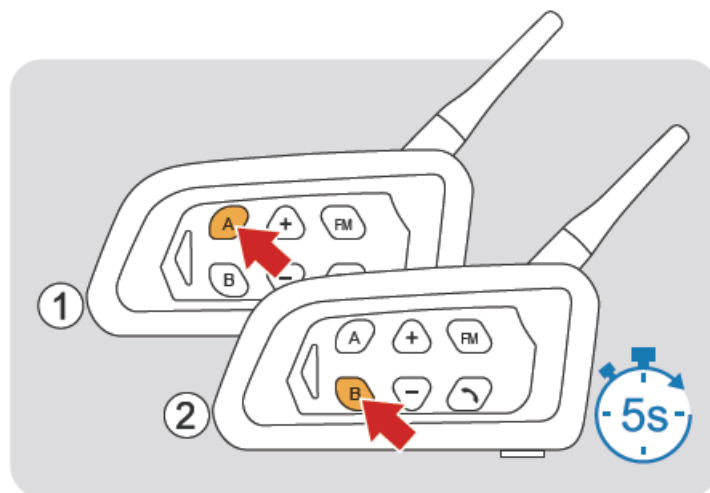


Long press the <Volume+>, <Volume->, <Phone Button> for 5s at the same time.

- The red and blue lights quickly flash three times simultaneously “Restore Default Settings”

## Bluetooth Intercom

### 2-Way Intercom Pairing



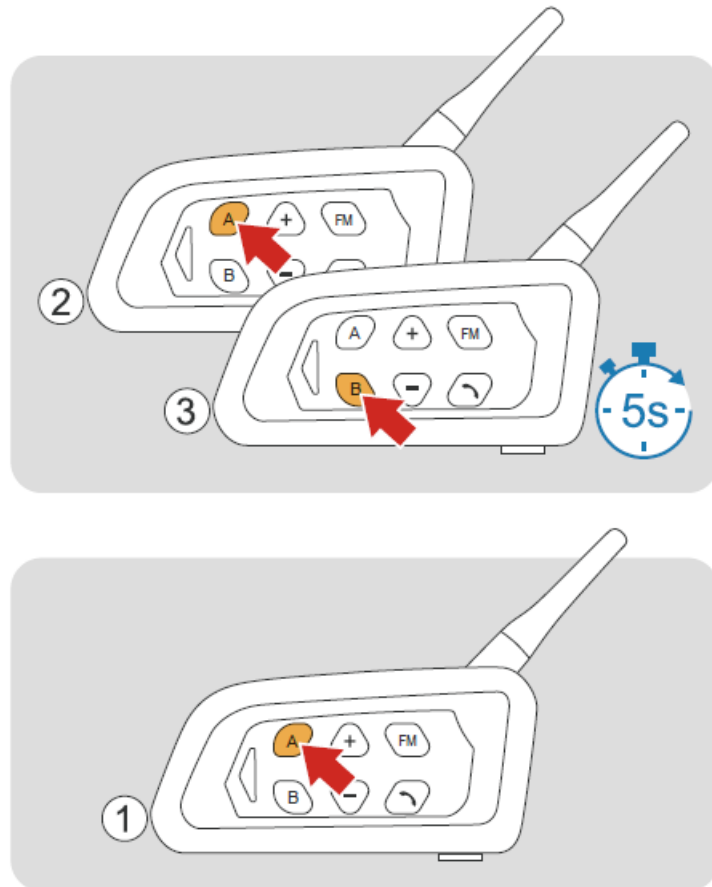
Long press both <A Button> of device 1 and <B Button> of device 2 for 5s, waiting to pair.

- Red and blue lights flash alternately

Searching and pairing.  
Pairing successfully.

Connected, start communication.

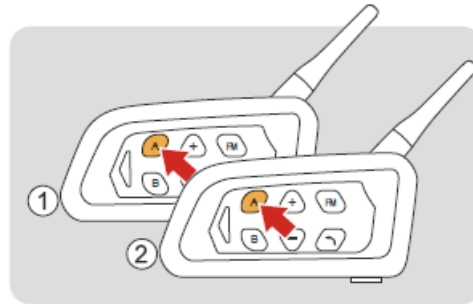
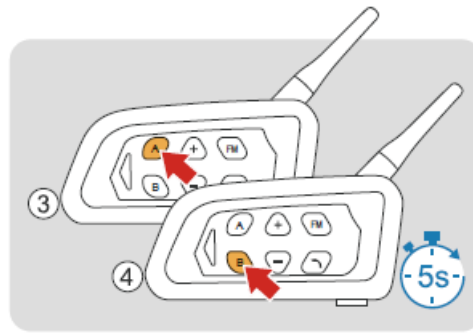
### 3-Way Intercom Pairing



1. Pair device 1 and device 2 as above one step.
2. Long press both <A Button> of device 2 and <B Button> of device 3 for 5s, waiting to pair.
  - Red and blue lights flash alternately  
Searching and paring.
  - Paring successfully.
3. Click <A Button> of device 1.  
{Blue light flashes once + stays on for 2s} and cycle.

Connected, start communication.

#### 4-Way Intercom Pairing

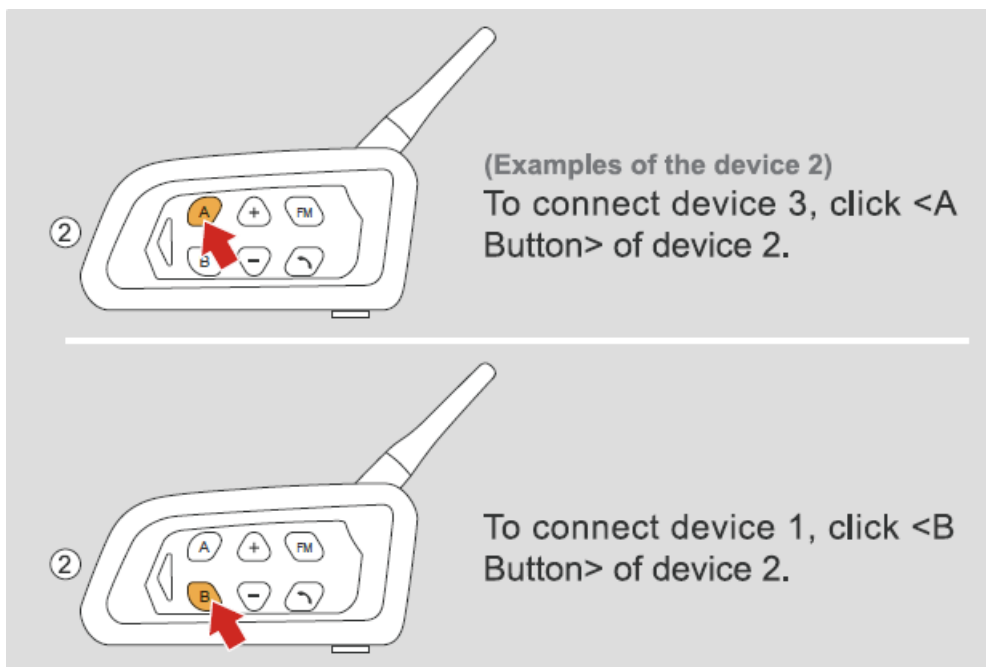


1. Device 1, device 2, and device 3 are paired as above two steps.
2. Long press both <A Button> of device 3 and <B Button> of device 4 for 5s, waiting to pair.
  - Red and blue lights flash alternately  
Searching and pairing.  
Pairing successfully.
3. Click both <A Button> of device 1 and device 2.
  - device 1 4 {Blue light flashes once + stays on for 2s} and cycle
  - device 2 4 {Blue light flashes twice + stays on for 2s} and cycle

**Connected, start communication.**

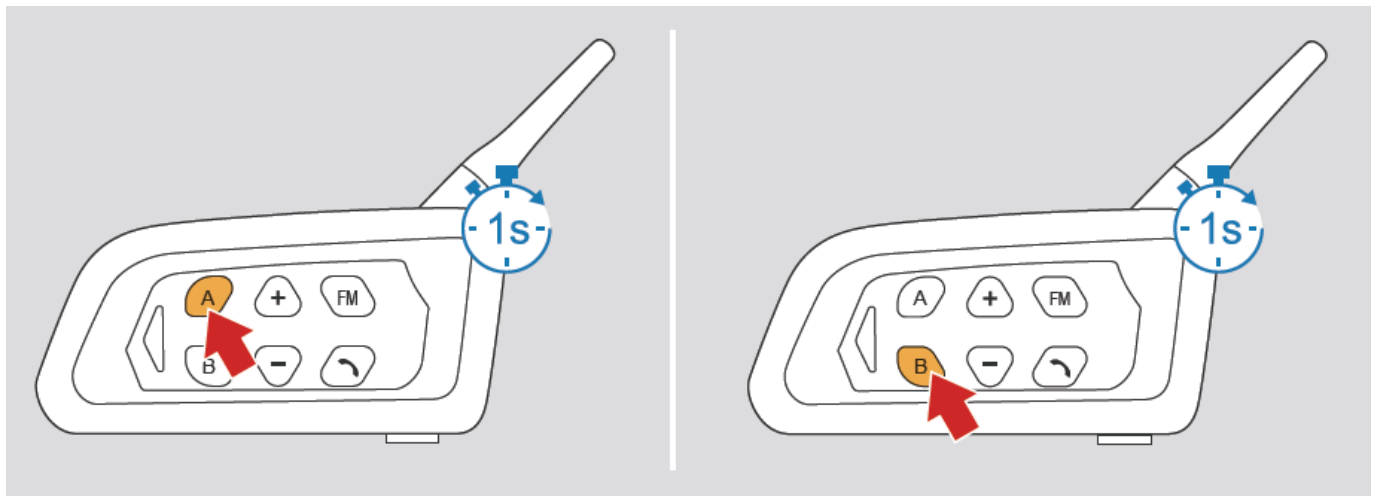
#### **Intercom Reconnection**

Reconnect after disconnection or boot.



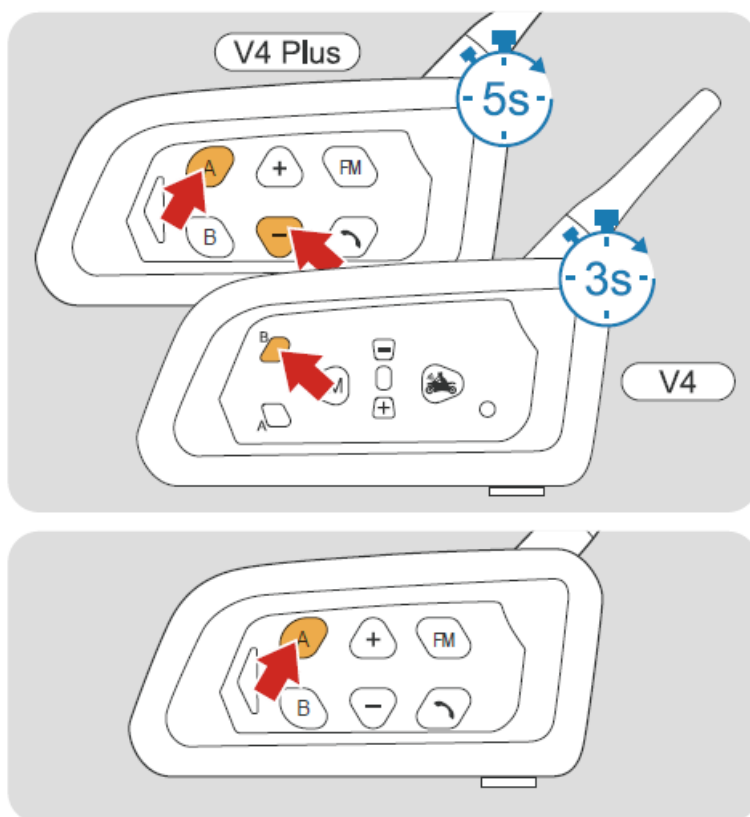
1. Device 1 & device 2 (or device 2 & device 3) connection is successful.  
{Blue light flashes once+ stays on for 2s) and cycle
2. Device 1 & device 2 & device 3 simultaneously connected.
3. {Blue light flashes twice + stays on for 2s} and cycle

#### Intercom Disconnection

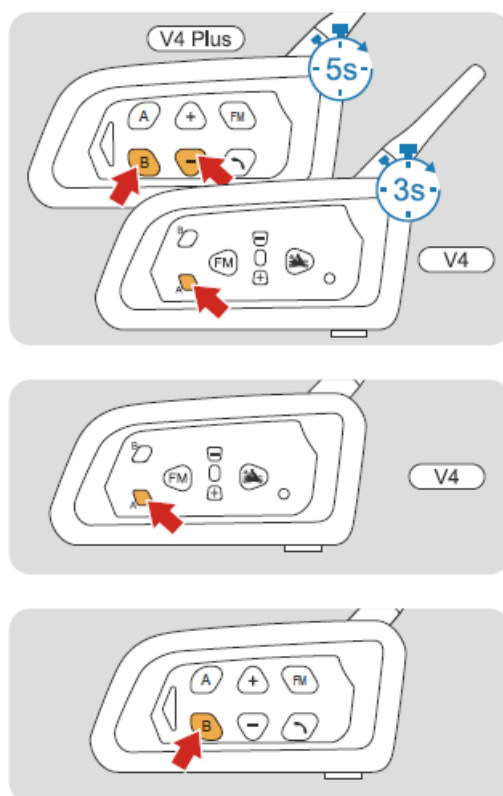


#### Compatible with Old Intercom Pairing





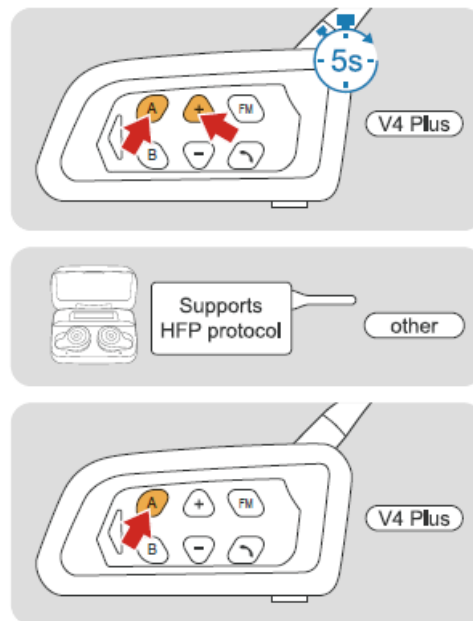
1. Long press both < Volume – > and <A Button> of V4 Plus for 5s, while long press <B Button> of V4 for 3s.
  - Red and blue lights flash alternately
 Pairing successfully.
2. Click <A Button> of V4 Plus



1. Long press both < Volume – > and <B Button> of V4 Plus for 5s, while long press <A Button> of V4 for 3s.
  - Red and blue lights flash alternately

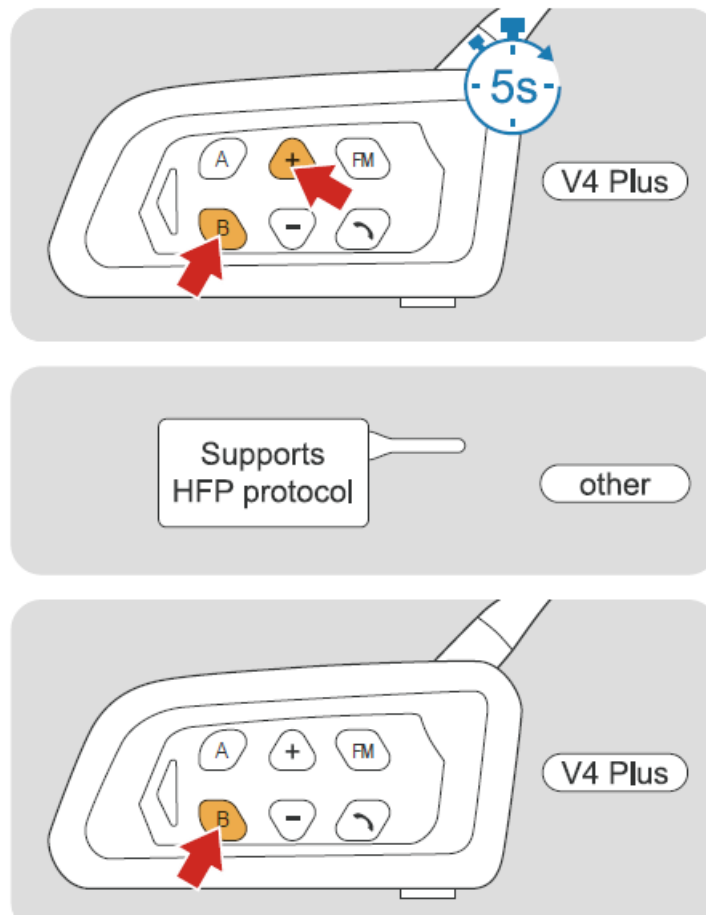
2. Click <A Button> of V4. CE) 4 Blue light flashes  
Pairing successfully.
3. Click <B Button> of V4 Plus

### Pairing of Bluetooth HFP-AG



1. Long press both <Volume +> and <A Button> of V4 Plus simultaneously for 5s.
  - Red and blue lights flash alternately
2. Other devices enter Bluetooth search mode.
3. Click <A Button> of V4 Plus to connect.

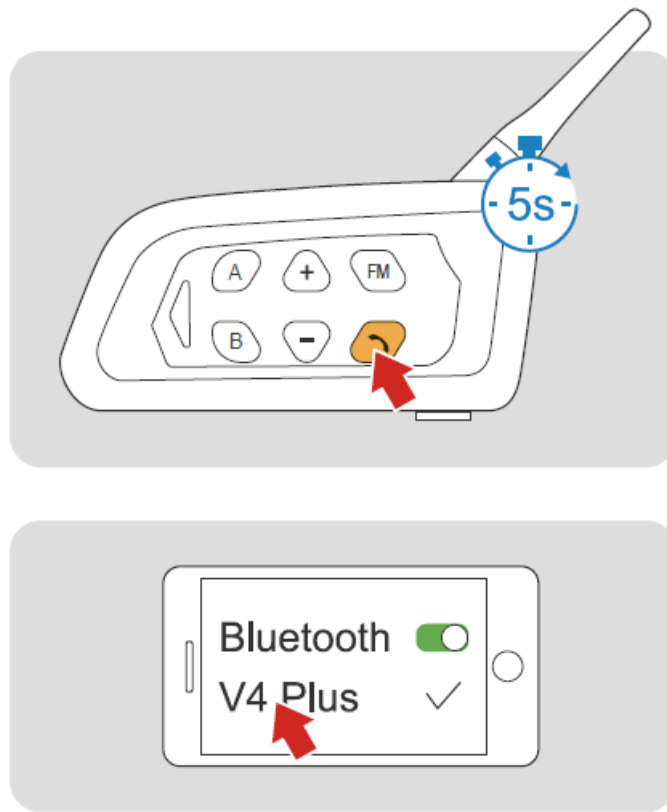
### Pairing of Bluetooth HFP-HF



1. Long press both <Volume +> and <B Button> of V4 Plus simultaneously for 5s.
  - Red and blue lights flash alternately
2. Other devices enter Bluetooth search mode.
3. Click <B Button> of V4 Plus to connect.

## Bluetooth Pairing

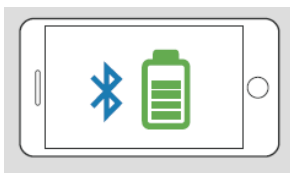
### Phone Pairing



1. In standby mode, long press the <Phone Button> for 5s to enter the pairing state.
  - Red and blue lights flash alternately
  - “Phone Pairing”
2. Turn on the Bluetooth of the mobile phone and click on the device.

#### **Pairing successful.**

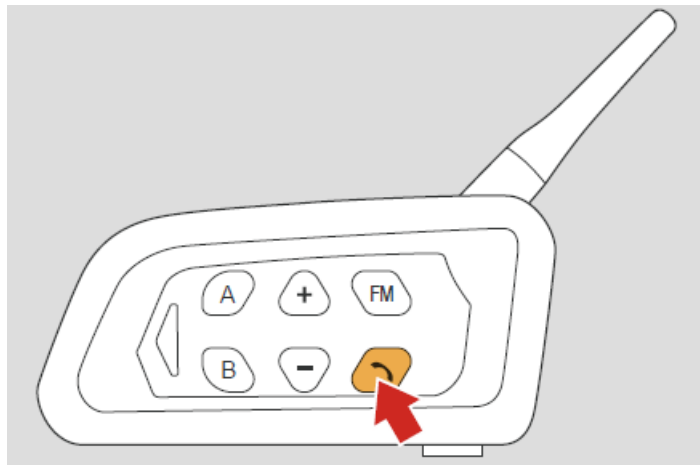
- Blue light twice flashes slowly
- “Pairing Successful”



Current power will be shown on your phone. (the mobile phone needs to support HFP)

#### **Phone Reconnection**

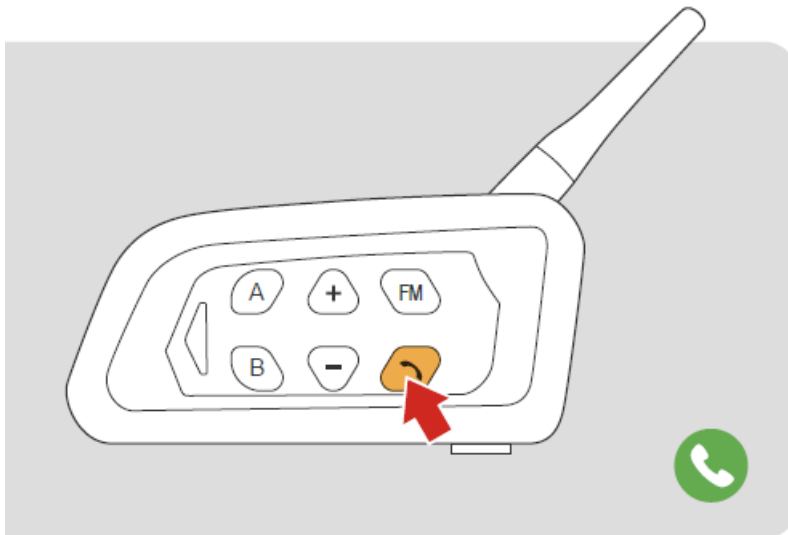
Automatically connect or back to the last paired.



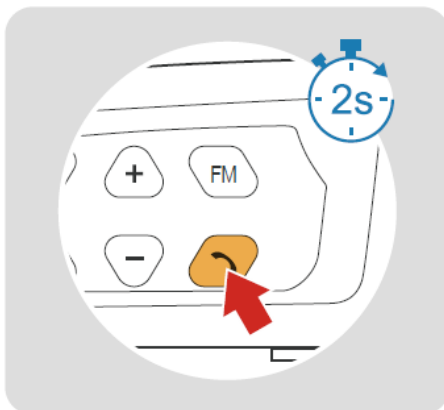
## Mobile Phone

### Answer a Call

Auto answering within 8s or if no any operation.



### Reject a Call Last



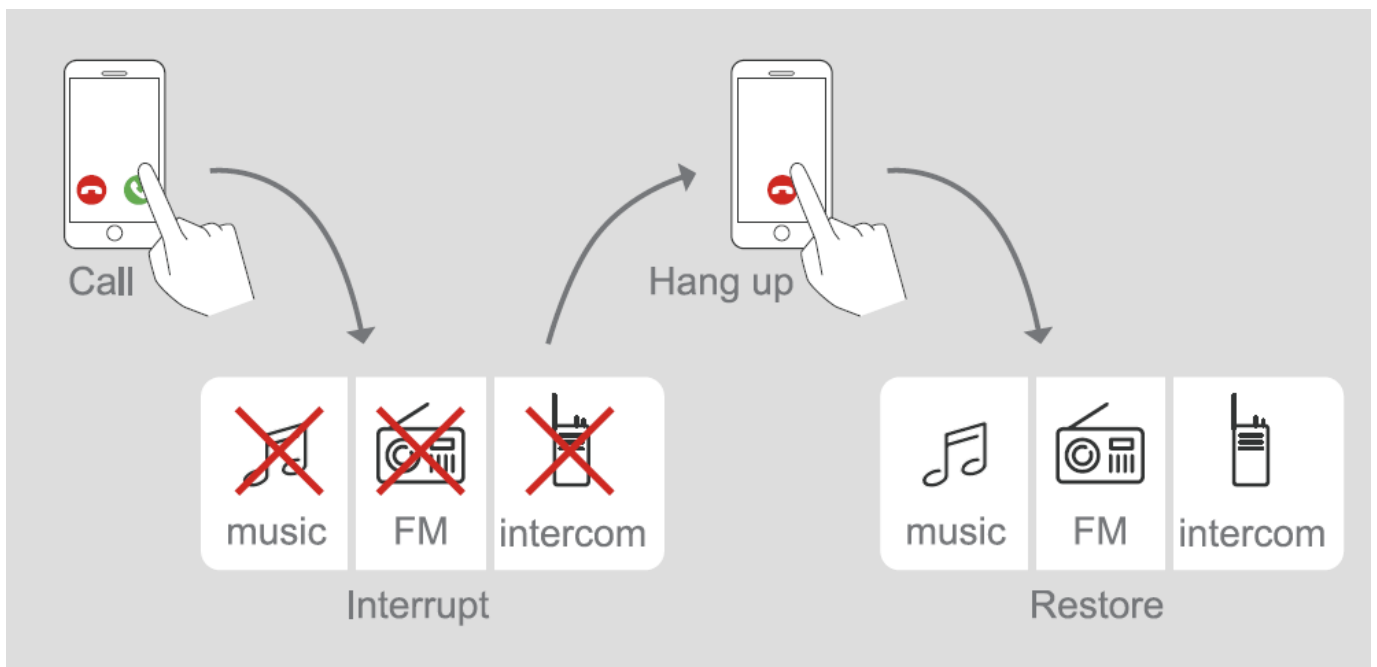
### Call Replay



### End a Call

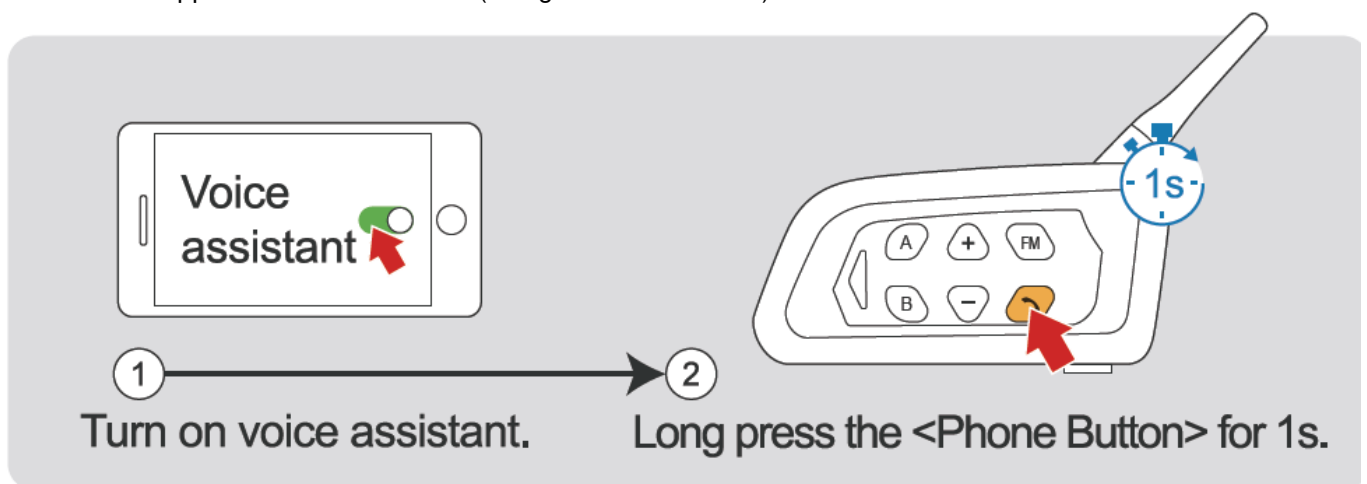


TEL Priority When listening to music. "FM/intercom, and receiving a phone call.

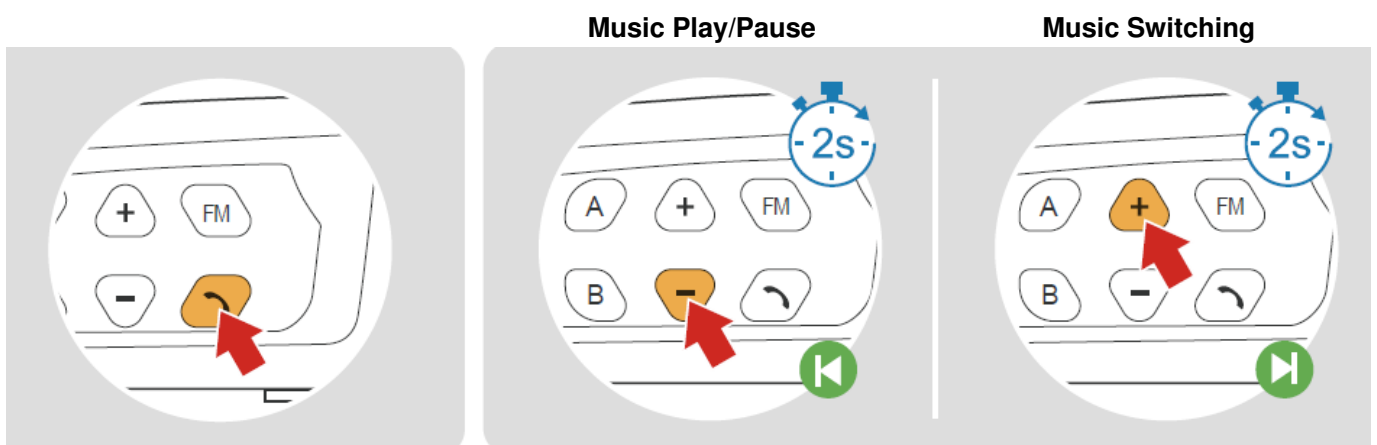


### Voice Assistant

Phone must support the voice assistant (Google assistant & Siri).



### Music Control



### FM Radio

#### FM On/Off

Auto search and radio, intercom and radio could working at the same time.



**Long press <FM Button> for 1s to open FM.**

- Blue light is always on for 4s
- Red light double flashes quickly
- ? "FM radio"

**Long press <FM Button> for 1s to close FM.**

- ? "FM radio off"

## Frequency Switching

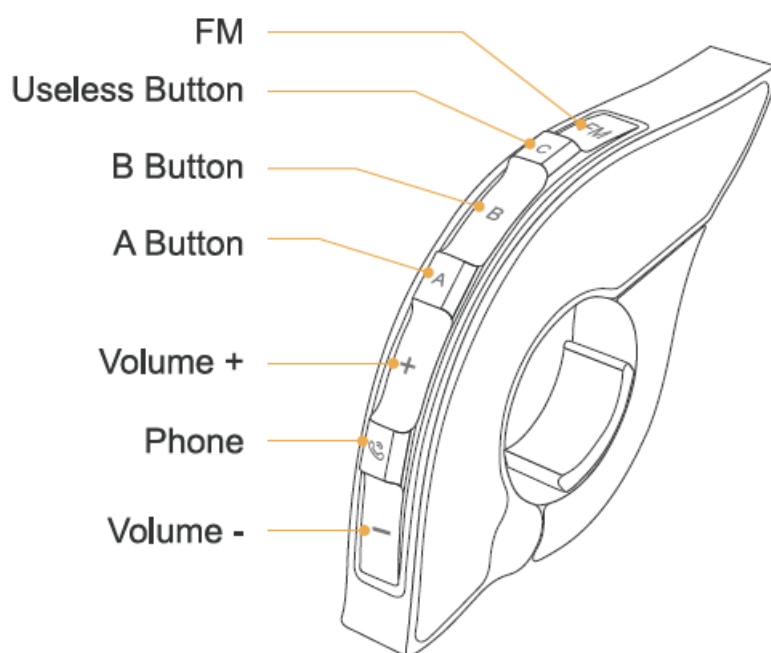


**Frequency -**

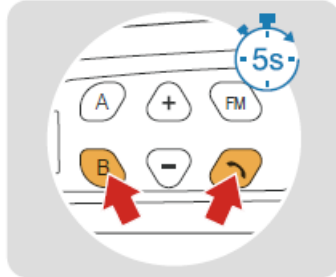
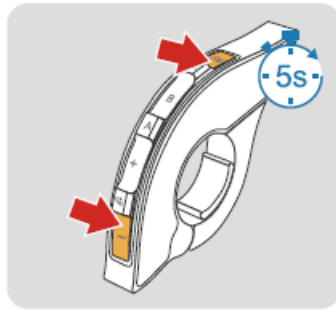
**Frequency +**

## EUC Remote Control (Optional)

### EUC Details



## EUC Pairing



1. Long press both <FM Button> and <Volume -> of EUC for 5s to clear the pairing record of EUC.
  - Red and Blue lights consistently on
2. Long press both <Phone Button> and <B Button> of V4 Plus for 5s.
  - Red and blue lights flash alternately and quickly

“Remote Control Pairing”
3. Click any key of EUC

### Pairing Successfully

- “Pairing Successful”
- (If EUC cannot be successful paired in 2 mins, It will automatically exit the pairing mode.)

**NOTE:** This equipment has been tested and found to comply with the limits for a Class B digital device, pursuant to part 15 of the FCC Rules. These limits are designed to provide reasonable protection against harmful interference in a residential installation. This equipment generates uses and can radiate radio frequency energy and, if not installed and used in accordance with the instructions, may cause harmful interference to radio communications. However, there is no guarantee that interference will not occur in a particular installation. If this equipment does cause harmful interference to radio or television reception, which can be determined by turning the equipment off and on, the user is encouraged to try to correct the interference by one or more of the following measures:

- Reorient or relocate the receiving antenna.
- Increase the separation between the equipment and receiver.
- Connect the equipment into an outlet on a circuit different from that to which the receiver is connected.




- Consult the dealer or an experienced radio TV technician for help

Changes or modifications not expressly approved by the party responsible for compliance could void the user's authority to operate the equipment. This device complies with Part15 of the FCC Rules. Operation is subject to the following two conditions:

1. This device may not cause harmful interference, and
2. This device must accept any interference received, including interference that may cause undesired operation

## Documents / Resources

	<p><a href="#">EJEAS V4 Plus Motorcycle Intercom System</a> [pdf] User Manual</p> <p>V4 Plus Motorcycle Intercom System, V4 Plus, Motorcycle Intercom System, Intercom System</p>
---	---