



EJEAS S2 Ski Helmet Intercom System User Manual

[Home](#) » [EJEAS](#) » EJEAS S2 Ski Helmet Intercom System User Manual 

Contents

- [1 EJEAS S2 Ski Helmet Intercom System](#)
- [2 Product Usage Instructions](#)
- [3 Product Details](#)
- [4 Product Operation](#)
- [5 Mesh Intercom](#)
- [6 Mobile Control](#)
- [7 Phone Priority](#)
- [8 Music Control](#)
- [9 Documents / Resources](#)
 - [9.1 References](#)
- [10 Related Posts](#)

EJEAS®

EJEAS S2 Ski Helmet Intercom System



Product Specifications

- Certified Model: S2
- Version Model: 4-people
- Intercom Type: MESH 4 People Intercom
- Features: Voice Assistant, Music Share, Simultaneous Intercom and Music
- IP Rating: IP67 (water and dust resistant)
- Special Feature: Firmware Upgrade Supported, Super Penetrating Power
- Compatibility: Supports Mobile App

Product Usage Instructions

Power ON/OFF

- **Power ON:** Long press the Function Button for 1 second until the blue light flashes with a voice prompt. Blue light will flash slowly in standby mode.
- **Power OFF:** Long press Function Button + Volume – until the voice prompt says Power off. Indicator light will turn off.

Charging and Battery Indication

When the battery is low, the red light flashes twice with a voice prompt. If extremely low, the device will automatically power off. The red light is always on while charging and turns off when fully charged.

Menu Options

To access the menu, simultaneously press and hold Volume + and Volume – for about 1 second. Use Volume buttons to navigate options, press Function Button to execute an option. Exit menu by long pressing Function Button.

Mobile App Integration

The SafeRiding mobile app provides various functions including intercom group, music control, FM control, and more. Pair the device with the app by following the provided instructions.

Mesh Intercom Feature

The Mesh intercom allows for simultaneous Bluetooth music playback during communication sessions. It operates on a multi-hop technology mesh network intercom with a wide communication frequency range.

Frequently Asked Questions (FAQ)

- **Q: How do I reset the device?**

A: The device will automatically power off while charging. To reset, simply power on after charging.

- **Q: How can I check the battery level?**

A: After connecting to the phone via Bluetooth, you can see the power icon on the phone side to check the battery level.

- **Q: What is the range of the Mesh intercom feature?**

A: The Mesh intercom feature operates within a large effective range allowing participants to move freely within the coverage area.

MESH Intercom Expert

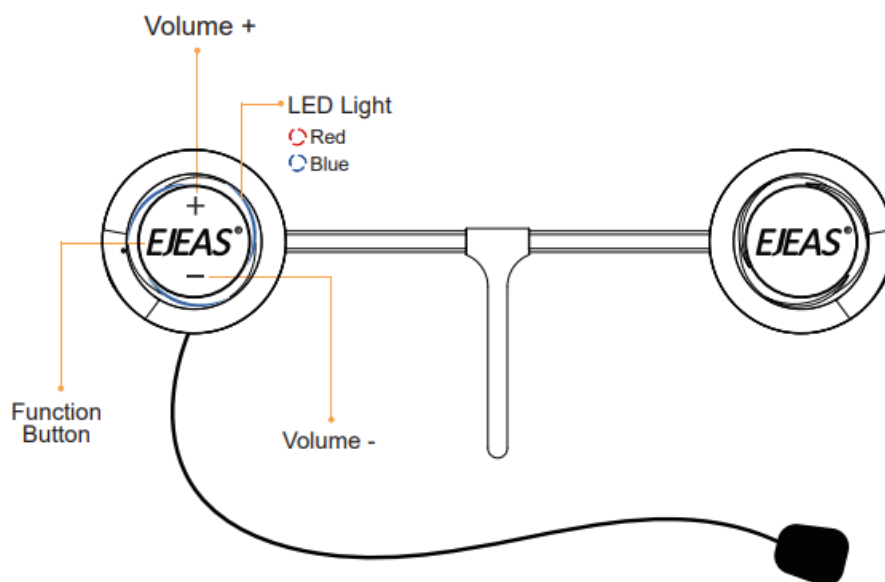
User Manual

Ski Helmet Intercom System

Certified Model	Version Model
S2	4-people

www.eieas.com

Product Details



MESH 4
People Intercom



Voice
Assistant



Music
Share



Simultaneous
Intercom and Music



Firmware
Upgarde Supported



IP67



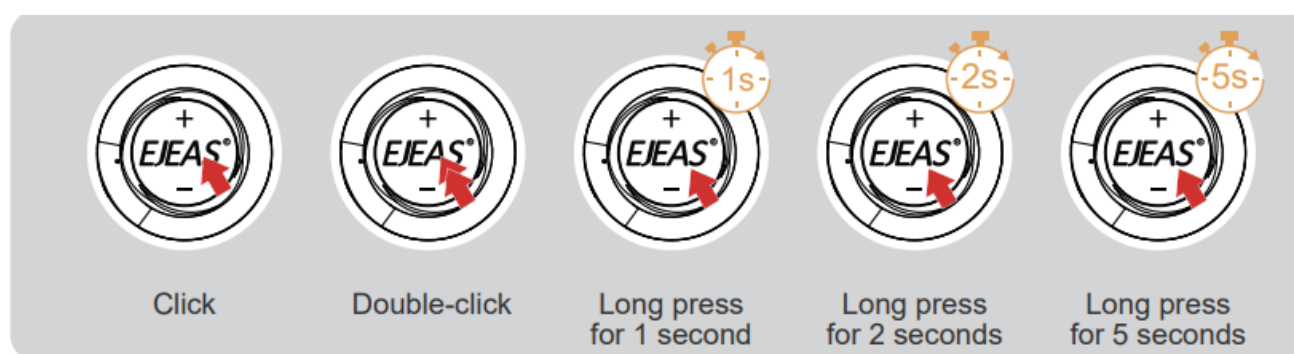
Super
Penetrating Power



Support
Mobile App

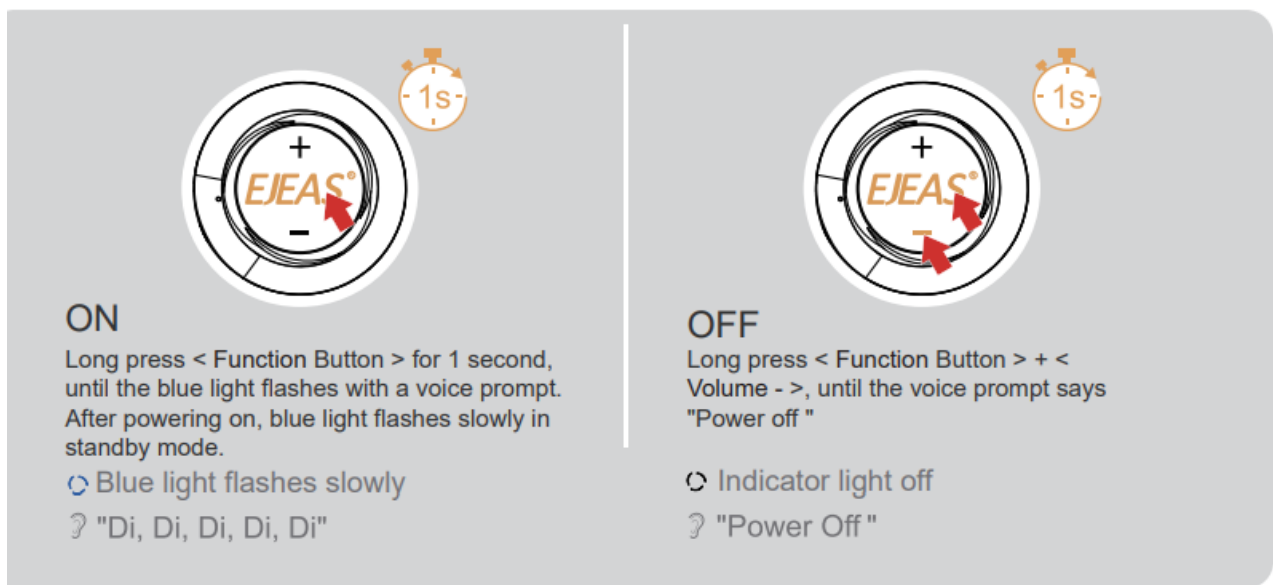
Product Operation

Operation Diagram



Basic Operation

Power ON/OFF Please charge it before using



Reset: It will automatically power off while charging and can be used while charging after powering on.

Low Battery Indication

When the battery is low, the red light flashes twice with a voice prompt "Low Battery". When the battery is extremely low, the device will automatically power off.



Charging Indication

The red light is always on when using USB charging. The red light is off when fully charged.



1. Menu Options


Simultaneously press and hold the < Volume + > + < Volume - > for about 1 second to open the menu option, and the voice prompt "Menu" will appear.


⦿ Blue light flashing

? "Menu"


2. Short press the < Volume + > / < Volume - > to move the option, voice broadcast the current option, and short

press the <Function Button> to execute the option.

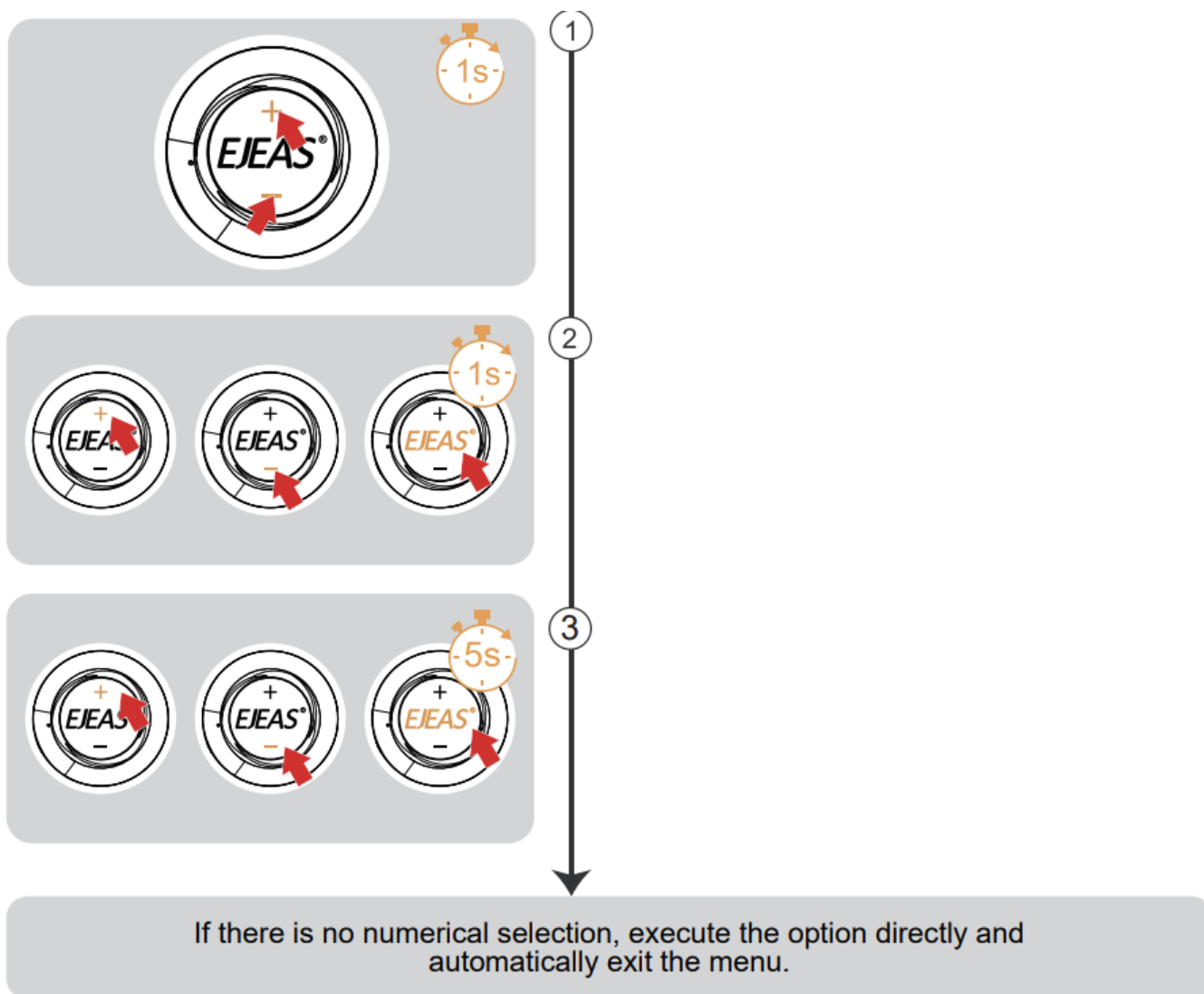
 Blue light flashing

 “Current Options”

- If there is a numerical value selection, continue to short press the < Volume + >/< Volume – >to select the value, then long press the< Function Button>to exit the menu. The voice prompts “Exit menu”.

 Blue light flashing

 “Exit Menu”



Option	Restore Default Settings	Mesh Channel 1	Listen Mesh Pairing
Numerical Value	None	1 5	None

Note (1): Can only be selected when Mesh intercom is turned on.

Mobile App A

PP provides intercom group, music control, FM control, switch off, check authenticity and other functions.

1. Download and install SafeRiding mobile APP for the first time.
2. Press and hold (approx. 5s) <Function Button> until the red and blue lights flash alternately to enter phone pairing.



Red and blue lights flash alternately

3. Open the APP, click on the Bluetooth icon in the top right corner, the interface shows the name of the intercom device searched, select the intercom device to be connected, click to connect.

(IOS system need to enter the phone pairing again, in the system settings->Bluetooth, connect audio Bluetooth).



4. Open the APP the next time you use it. Click the Bluetooth icon in the top right corner and click to select Intercom for connection from the paired devices.

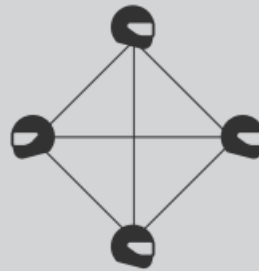
Mesh Intercom

Mesh intercom is a multi-hop technology mesh network intercom (Communication frequency 470-488MHz). On account of large number of participants and unrestricted location, people are able to move at will within the effective range. It is not only superior to the traditional Bluetooth chain intercom, but has a longer transmission distance and better anti-interference ability.

Features: Intercom with up to 4 people, 5 channels in total. If participating in campaign mode as a listener, there is no limit to the number of people who can join the intercom in a listen-only manner.



When entering the Mesh intercom, Bluetooth music can be played at the same time .



Microphone Mute

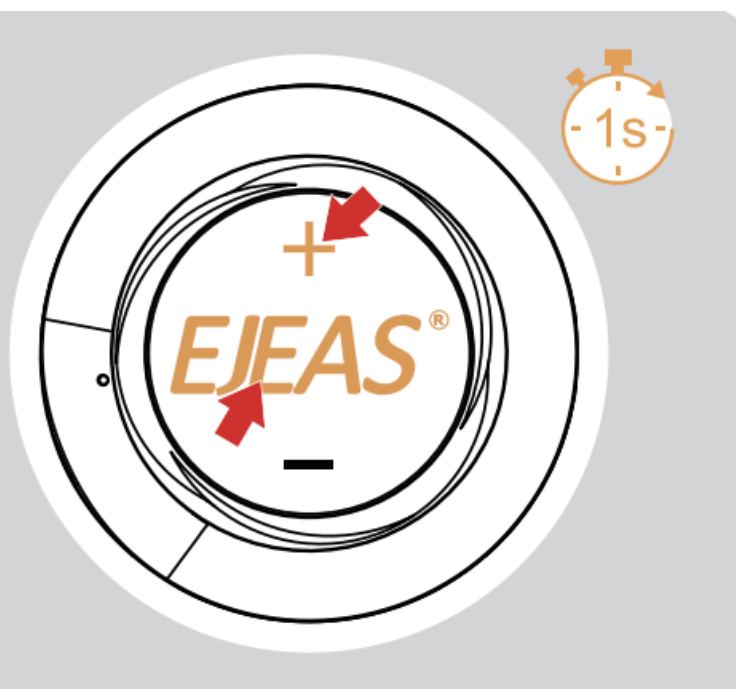
When using Mesh Intercom, you can mute the microphone with a short press of the <Volume + >+<Function Button>, so that the sound of your own voice will not be sent to others.

? “Microphone Mute”

Press <Volume + >+<Function Button> to unmute.

? “Microphone unmute”

Note: Only valid for Mesh intercom.



Pairing Steps as Members

1. All devices first enter the intercom pairing state, long press <Volume + >+<Function Button> (about 5s) until you hear a prompt and the red light and blue light flash alternately.



Red and blue lights flash alternately "Mesh Pairing"

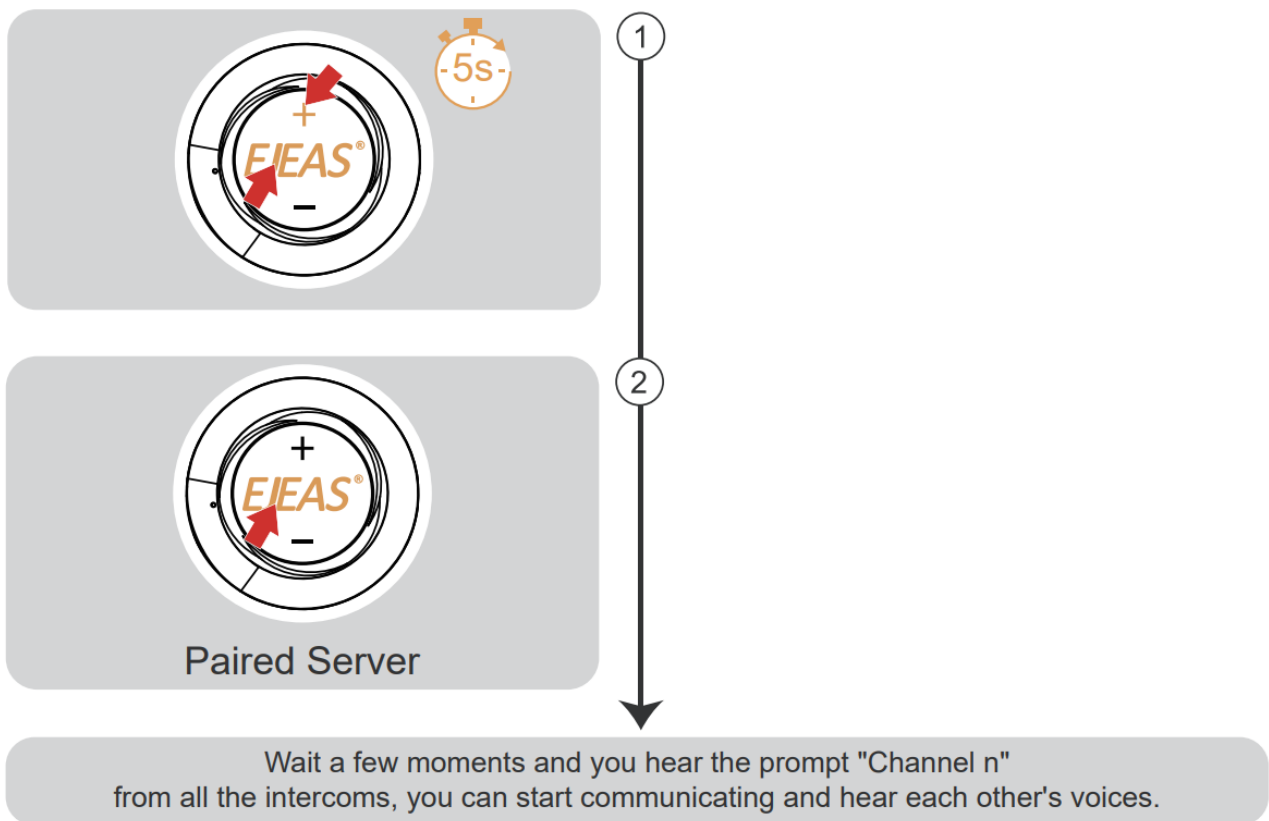
2. Take one of them as the paired server, press <Function Button> , you will hear a beep and the red light and blue light will flash alternately.



Red and blue lights flash alternately



"Bi"



• Intercom Reconnection

When you power on the intercom for the next use, short press the <Volume + >+<Function Button>. You will hear the prompt "Join the Mesh." Wait for a moment, and you will hear the prompt "Channel n", you can talk to each other.

• Turn off MESH Intercom

Press and hold the <Volume + >+<Function Button> (about 1s) to turn off Mesh Intercom . The voice prompts "Mesh Close".

• Intercom Channel Switching

There are a total of 5 channels, which can be changed through the menu (as explained in the menu on page 3 of the manual). Channels can be switched forward or backward, note that the entire team needs to be on the same channel to talk to each other.

When the signal is unstable, you can switch channels to adjust.



If the device is powered off without turning the intercom off, the intercom will be automatically restored upon the next power-on.

Pairing Steps as Listeners

In the case that other intercoms have formed a team, you can become the listener of the team through pairing.

1. Take the intercom to be paired, enter listening mode pairing, open the menu (as explained in the menu on page 3 of the manual.), select Mesh listening mode pairing, and prompt “Mesh system listening mode pairing”. The red light and blue light flash alternately.



Red and blue lights flash alternately



“Listen Mesh Pairing”

2. Take the intercom to be paired, enter listening mode pairing, open the menu (as explained in the menu on page 3 of the manual), select Mesh listening mode pairing, and prompt “Mesh system listening mode pairing”.

Note: Unjoined machines can only be joined again through the server.

“Listen Mesh Pairing”

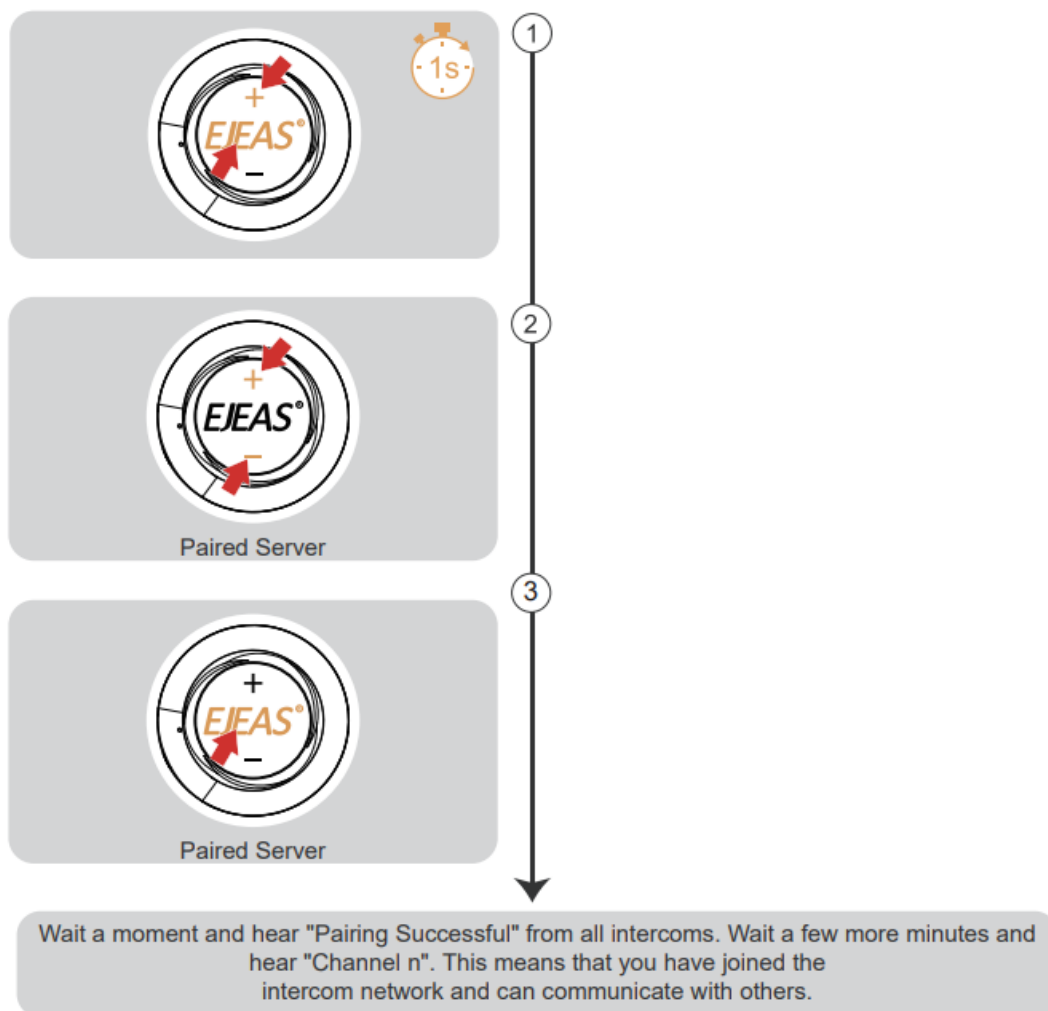
3. Short press the <Function Button> again, and you will hear a “beep” sound, with alternating red and blue lights flashing.



Red and blue lights flash alternately

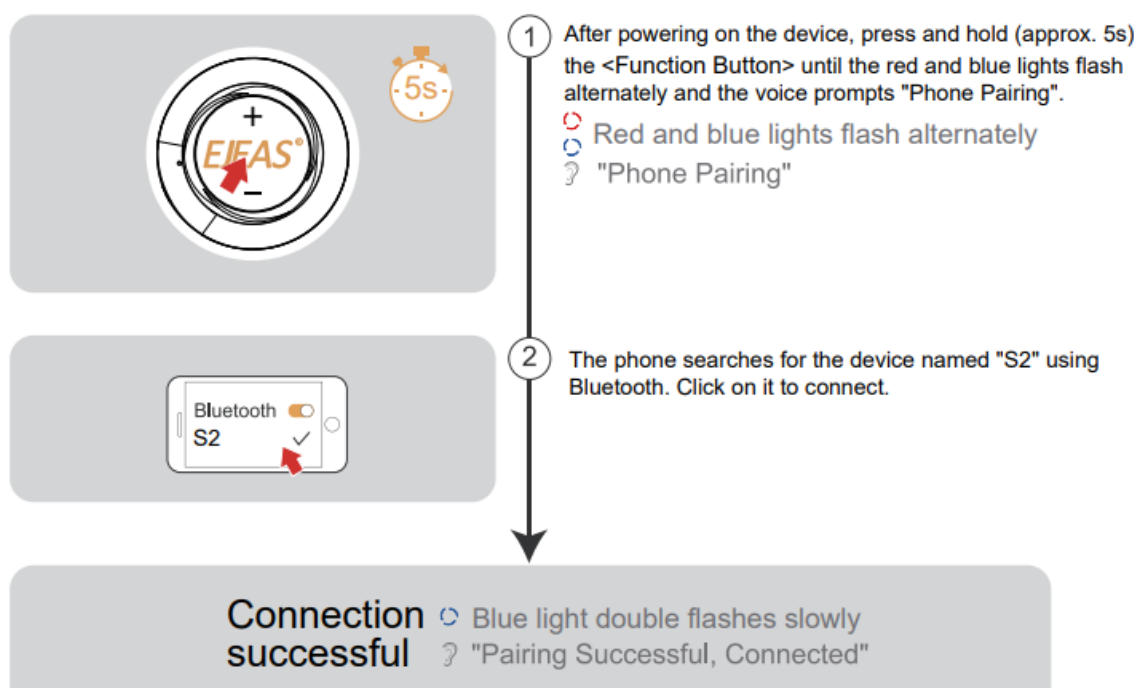


“Du”



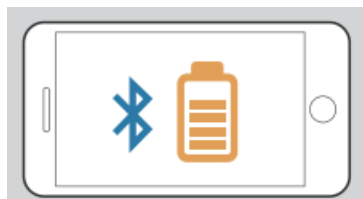
Mobile Phone Pairing

This intercom supports connection to mobile phones for playing songs, making calls, and waking up voice assistants. Up to 2 mobile phones can be connected at the same time.



Current battery level is displayed on the phone's Bluetooth icon

Mobile phone HFP connection required



Bluetooth Reconnection With Mobile Phones

After switching on, it automatically connects back to the last connected phone Bluetooth. When there is no connection, click on the <Function Button> to reconnect with the last mobile device that was connected to Bluetooth.



Mobile Control

Call Answering

When a call comes in, click on the <Function Button>



- **Call Rejection**

When a call come, press the <Function Button> for about 1s

- **Hang Up**

During a call, click on the <Function Button>

- **Call Redial**

When standby/playing music, quickly double-click the <Function Button>

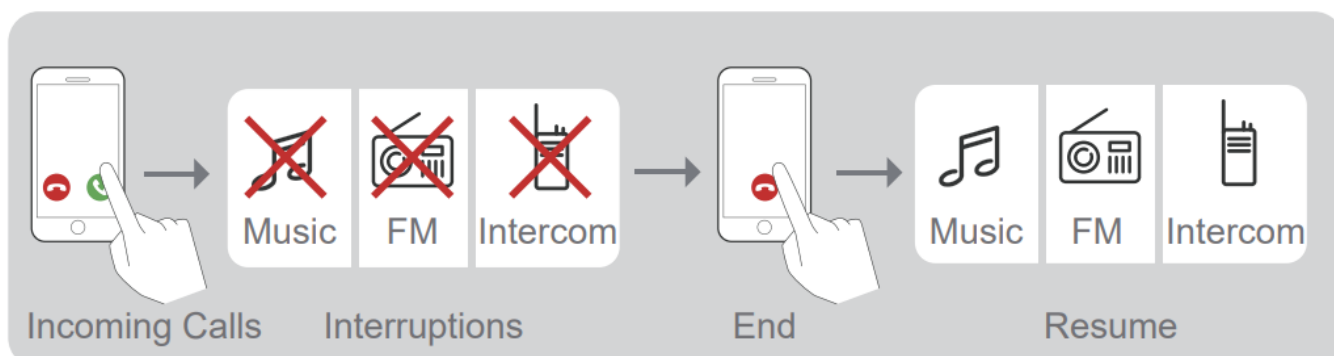
- **Cancel Redial**

During redial, click on <Function Button>



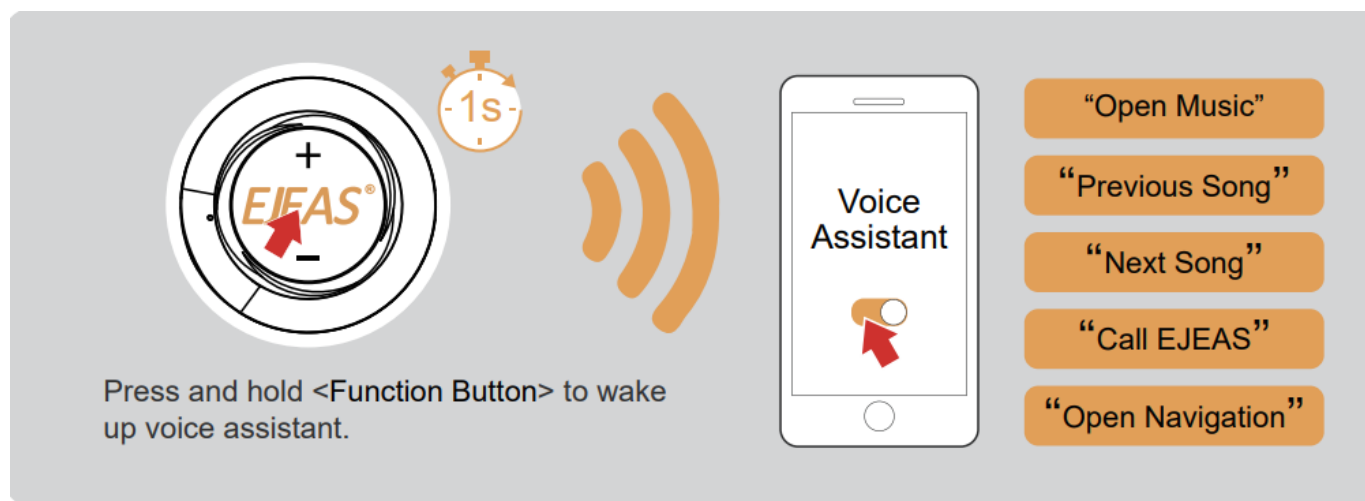
Phone Priority

When a call comes in, it will interrupt Bluetooth music, FM radio, intercom, and resume after hanging up.



Voice Assistant

When in standby/playing music, press and hold <Function Button>, it depends on your mobile phone.



Music Control

Play/Pause



Previous Song



Next Song



Music Playing



Volume -



Volume +



Music Share

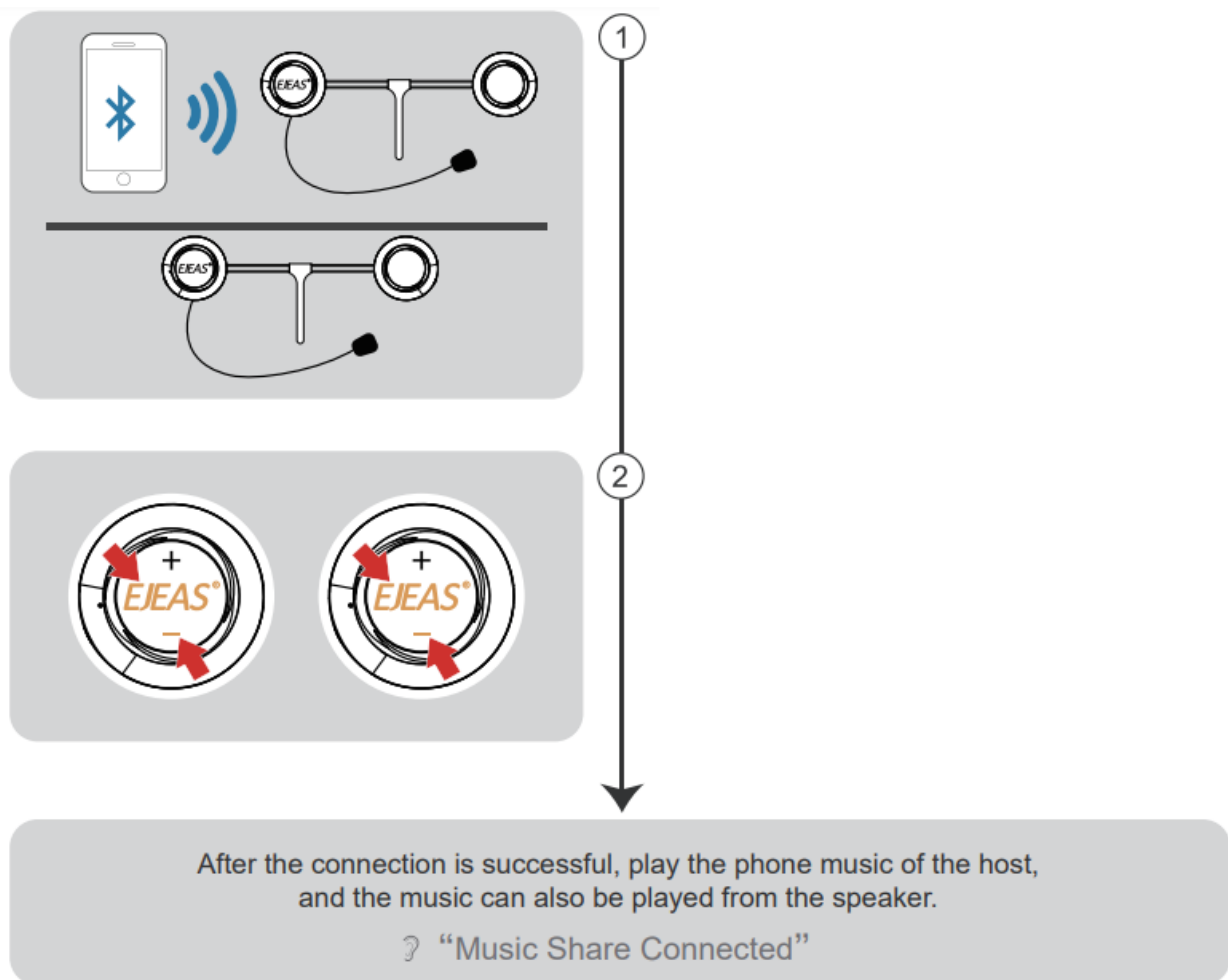
Share the music played by Bluetooth on your phone to another device, and this function cannot be used during Bluetooth intercom.

This function cannot be used when two phones are connected simultaneously.

1. Take an intercom as the host, connect it to the phone, and the other one is the slave.
2. Press the <Function Button>+<Volume -> at the same time between the host and slave to enter the music sharing search connection state.

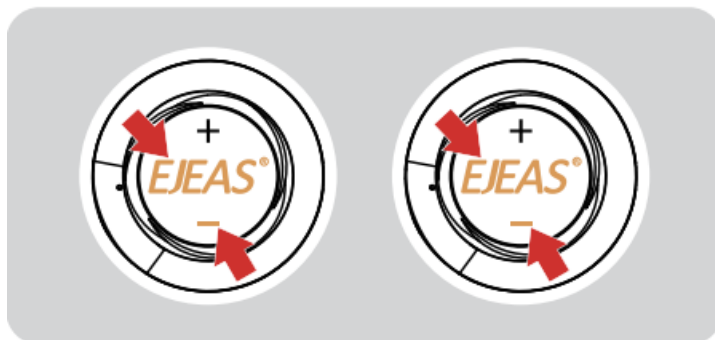


“Music Share”

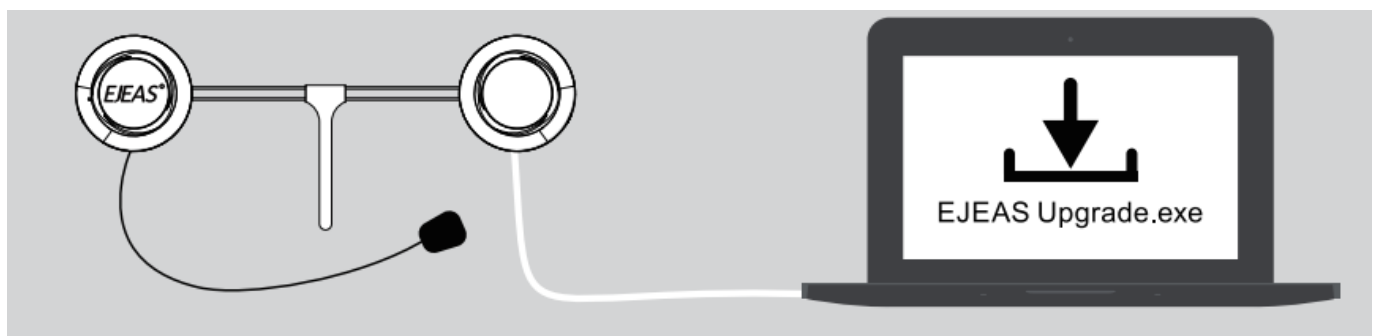


Press the <Function Button>+<Volume -> again to exit music sharing.

? “Music Share Disconnected”



Firmware Upgrades

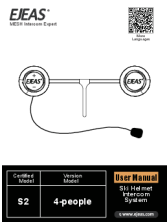


Connect to the computer with a USB data cable. Download and open the “EJEAS Upgrade.exe” upgrade software.

Click on the “Upgrade” button to start and wait for the upgrade to complete.

Note: Upgrading must use the standard data cable from EJEAS.

Documents / Resources



The image shows the EJEAS S2 Ski Helmet Intercom System components, including two helmet-mounted units connected by a cable, and the product packaging. The packaging is labeled 'EJEAS S2 4 people' and 'Ski Helmet Intercom System'.

[EJEAS S2 Ski Helmet Intercom System](#) [pdf] User Manual

S2 Ski Helmet Intercom System, S2, Ski Helmet Intercom System, Helmet Intercom System, Intercom System, System

References

- [User Manual](#)

Manuals+, Privacy Policy

This website is an independent publication and is neither affiliated with nor endorsed by any of the trademark owners. The "Bluetooth®" word mark and logos are registered trademarks owned by Bluetooth SIG, Inc. The "Wi-Fi®" word mark and logos are registered trademarks owned by the Wi-Fi Alliance. Any use of these marks on this website does not imply any affiliation with or endorsement.