

EJEAS
GY118 Bluetooth
Intercom Headset



EJEAS GY118 Bluetooth Intercom Headset Instruction Manual

[Home](#) » [EJEAS](#) » EJEAS GY118 Bluetooth Intercom Headset Instruction Manual 

Contents

- 1 EJEAS GY118 Bluetooth Intercom Headset
- 2 Product Usage Instructions
- 3 Basic Operations:
 - 3.1 Product Details
 - 3.2 Product Operation
 - 3.3 FAQ
- 4 Documents / Resources
 - 4.1 References
- 5 Related Posts

EJEAS

EJEAS GY118 Bluetooth Intercom Headset



Product Specifications:

- **Model:** GY118
- **Version:** 6-worker
- Full Duplex Industrial MESH Digital Intercom
- Volume Phone/Power Button
- USB Charging Interface
- Headphone Jack
- Intercom Button with LED Light (Blue, Red, Green)
- MESH 6 People Intercom
- Bluetooth Intercom
- Music Share
- IP67 Waterproof
- Voice Assistant
- FM Radio
- Support for Channel Switching Mobile App

Product Usage Instructions

Basic Operations:

- **Power ON/OFF:** Long press the Phone/Power Button for 5 seconds to power on/off. Charge before initial use.
- **Reset:** Automatically powers off while charging and can be used while charging after powering on.
- **Low Battery Indication:** Red light flashes twice with a voice prompt when battery is low; automatic power off

when extremely low.

- **Charging Indication:** Red light on during USB charging, off when fully charged.

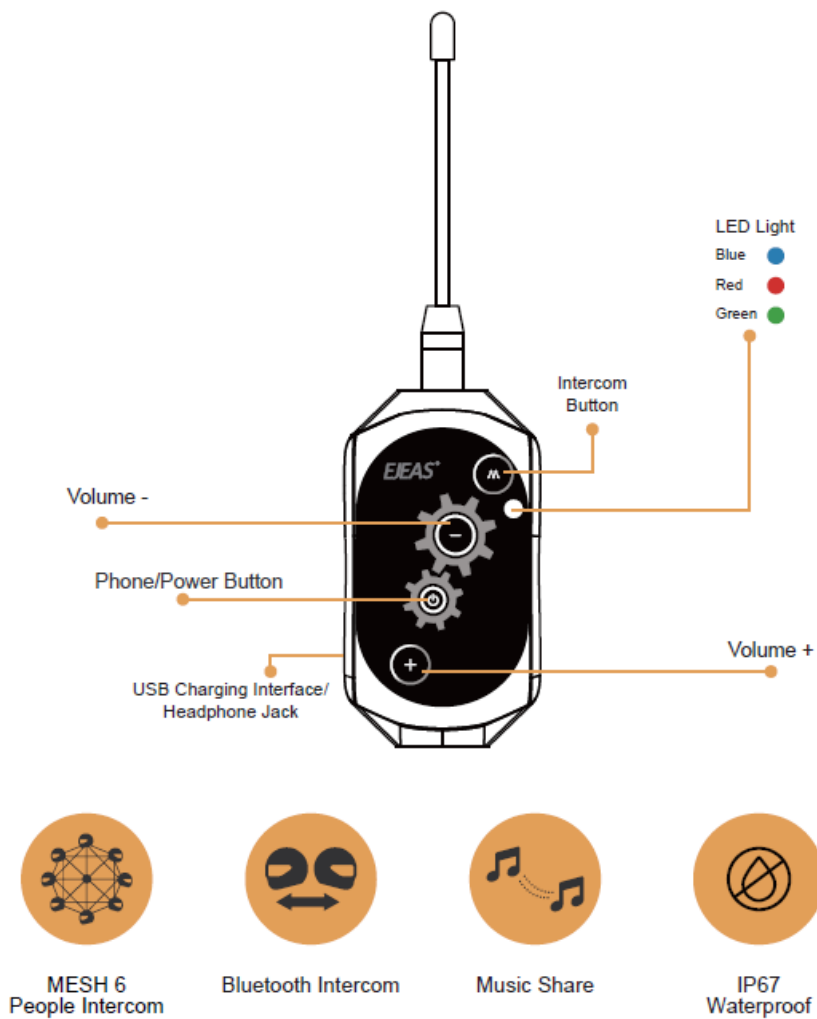
MESH Intercom Usage:

- **Mute Microphone:** Short press the Intercom Button to mute microphone during Mesh Intercom.
- **Pairing Steps as Members:** Long press the Intercom Button for 5 seconds to enter pairing state; follow prompts for successful pairing.
- **Intercom Reconnection:** Short press the Intercom Button to join Mesh and communicate after powering on for next use.

Additional Features:

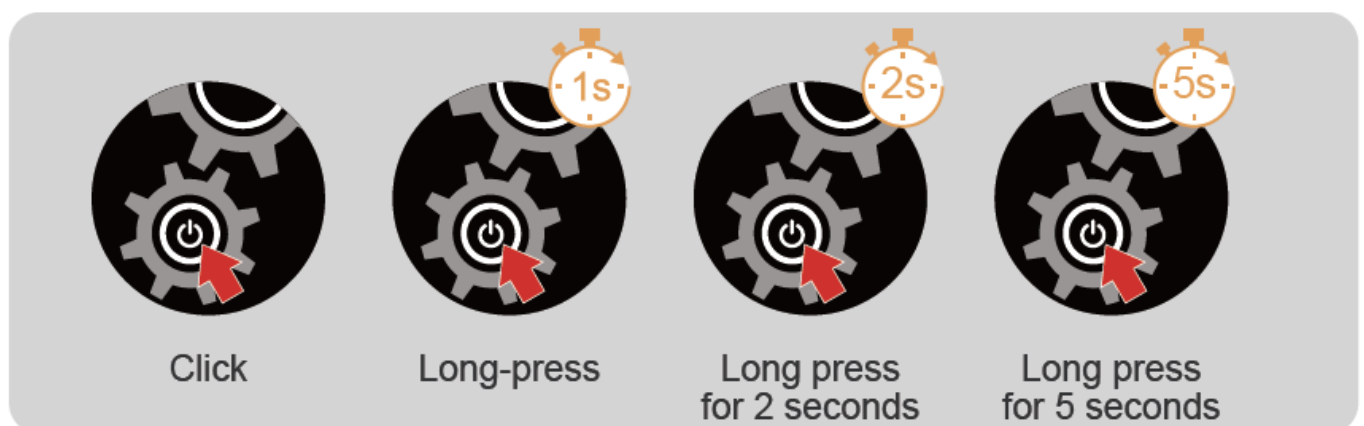
- **Voice Assistant:** Provides voice assistance for easy operation.
- **IP67 Waterproof:** Suitable for use in wet or outdoor environments.
- **Music Share:** Share music via Bluetooth intercom feature.
- **FM Radio:** Enjoy FM radio broadcasts with the device.

Product Details



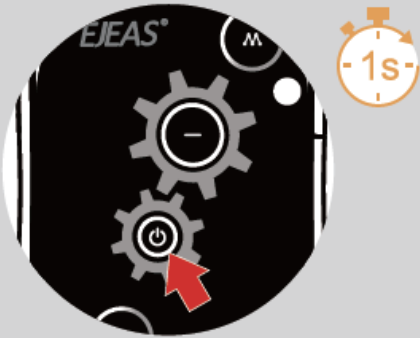
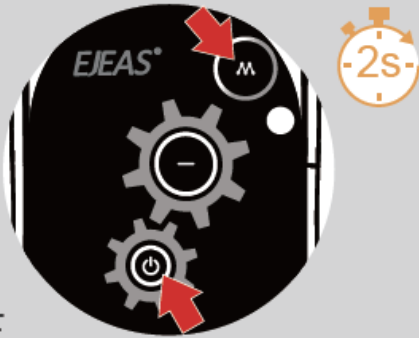
Product Operation

Operation Diagram




Basic Operation

Power ON/OFF Please charge it before using

 <p>ON Long press <Phone/Power Button > for 1 second, until the blue light flashes with a voice prompt.</p> <p>● Blue light flashes slowly ? "Di, Di, Di, Di, Di"</p>	 <p>OFF Long press < Phone/Power Button > + < Intercom Button >, until the voice prompt says "Power off"</p> <p>● Indicator light off ? "Power Off "</p>
---	---

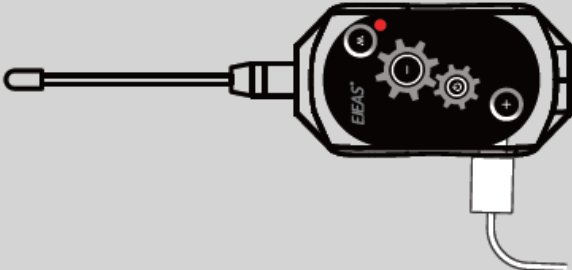
Reset: It will automatically power off while charging and can be used while charging after powering on.

Low Battery Indication



When the battery is low, the red light flashes twice with a voice prompt "Low Battery".
When the battery is extremely low, the device will automatically power off.

Charging Indication



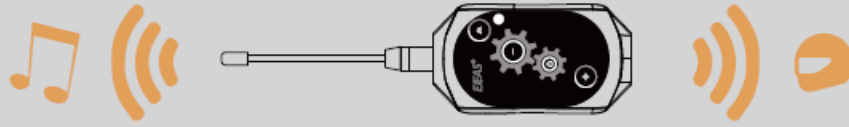
The red light is always on when using USB charging. The red light is off when fully charged.

Battery Inquiry: After connecting to the phone via Bluetooth, you can see the power icon on the phone side.

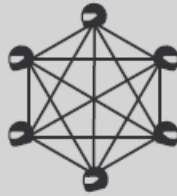
Mesh Intercom

- Mesh intercom is a multi-hop technology mesh network intercom (Communication frequency 470-488MHz). On account of large number of participants and unrestricted location, people are able to move at will within the effective range. It is not only superior to the traditional Bluetooth chain intercom, but has a longer transmission distance and better anti-interference ability.
- **Features:** Intercom with up to 4/6 people, 5 channels in total. If participating in campaign mode as a listener,

there is no limit to the number of people who can join the intercom in a listen-only manner.



When entering the Mesh intercom, Bluetooth music can be played at the same time .



Microphone Mute

- When using Mesh Intercom, you can mute the microphone with a short press of the < Intercom Button >, so that the sound of your own voice will not be sent to others.

Microphone Mute

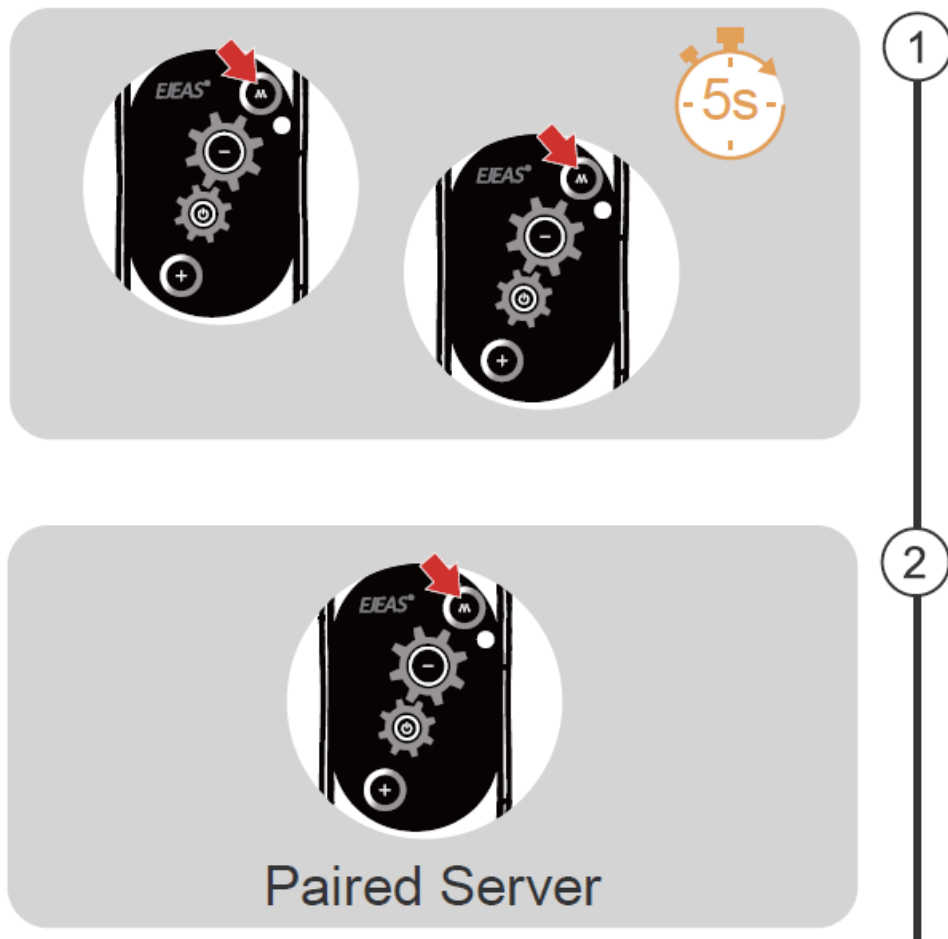
- Press <Intercom Button> to unmute.

Microphone Unmute

Note: Only valid for Mesh intercom.

Pairing Steps as Members

1. All devices first enter the intercom pairing state, long press <Intercom Button> (about 5s) until you hear a prompt and the red light and green light flash alternately. Red light and green light flash alternately “Mesh Pairing”
2. Take one of them as the paired server, press <Intercom Button> , you will hear a beep and the red light and green light will flash alternately. Red light and green light flash alternately “Bi”



Wait for a moment and hear "Pairing Successful" from all devices, which means the pairing is successful. "Pairing Successful"

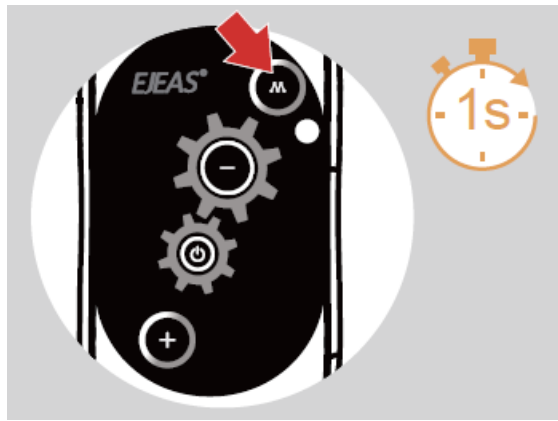
Wait a few moments and you hear the prompt "Channel n, xxx.x megahertz" from all the intercoms, you can start communicating and hear each other's voices.

Intercom Reconnection



When you power on the intercom for the next use, short press the <Intercom Button>. You will hear the prompt "Join the Mesh." Wait for a moment, and you will hear the prompt "Channel n, xxx.x megahertz", you can talk to each other.

Turn off MESH Intercom



Press and hold the <Intercom Button> (about 1s) to turn off Mesh Intercom . The voice prompts “Mesh Close”.

If the device is powered off without turning the intercom off, the intercom will be automatically restored upon the next power-on.

Pairing Steps as Listeners

In the case that other intercoms have formed a team, you can become the listener of the team through pairing.

1. Take the intercom to be paired, enter listening mode pairing, long press <Intercom Button> + <Volume -> (about 5s), and prompt “Listen Mesh Pairing”, the red light and green light will flash alternately.

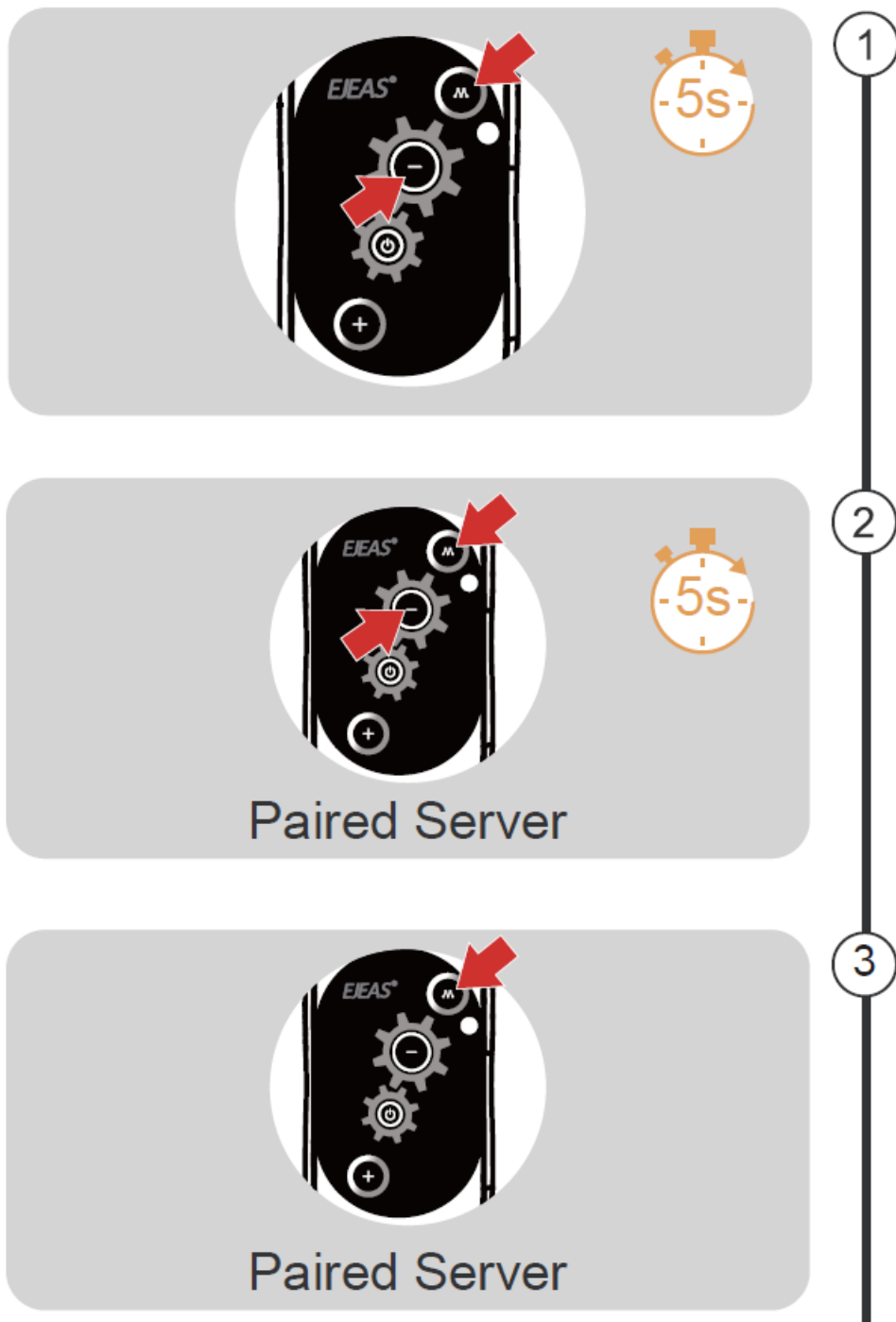
Red light and green light flash alternately “Listen Mesh Pairing”

2. Take an intercom that has been paired as a paired server, entering listening mode pairing, and press and hold <Intercom Button> + <Volume -> (about 5s) to prompt “Listen Mesh Pairing”.

Note: Unjoined machines can only be joined again through the server.

“Listen Mesh Pairing”

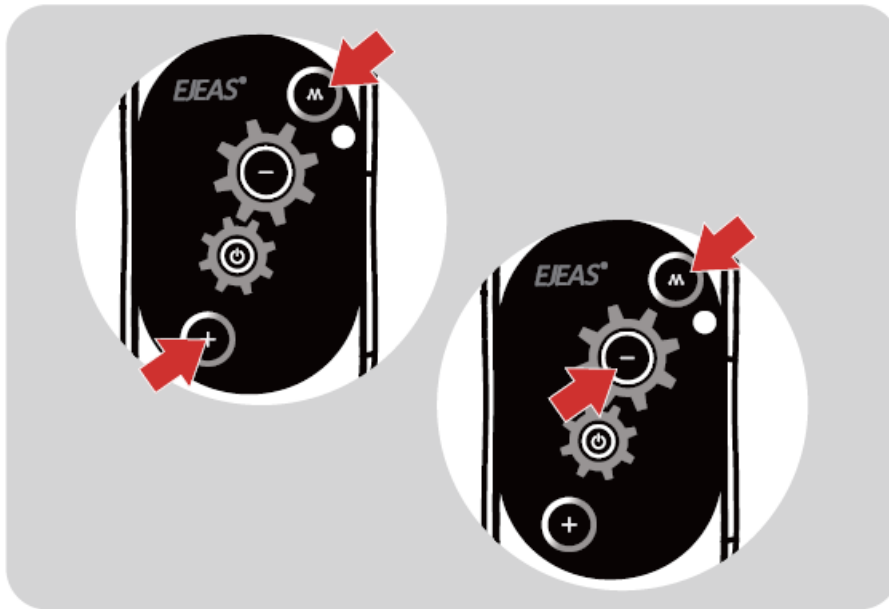
3. Short press the <Intercom Button>, you will hear a beep and the red light and green light will flash alternately. Red light and green light flash alternately “Du”



Wait a moment and hear “Pairing Successful” from all intercoms. Wait a few more minutes and hear “Channel n, xxx.x MHz”. This means that you have joined the intercom network and can communicate with others.

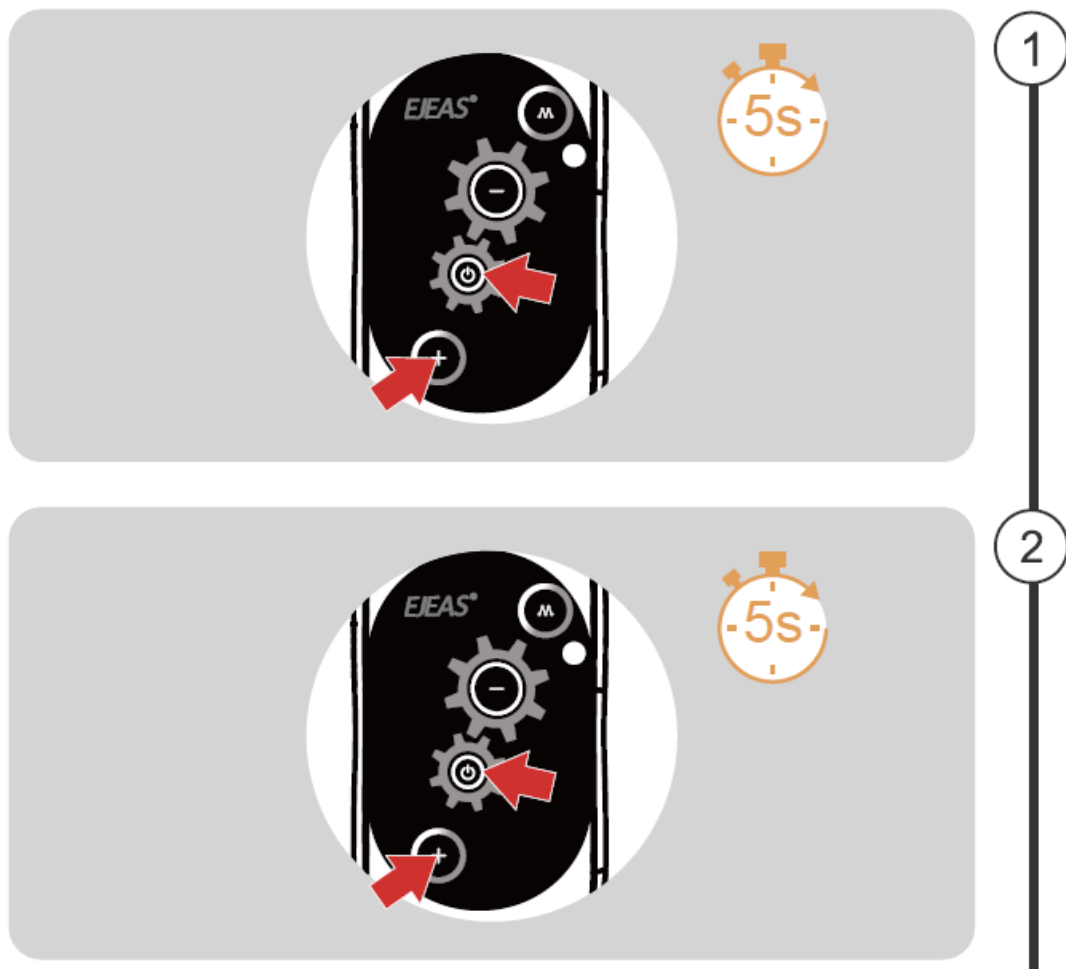
Intercom Channel Switching

There are 5 channels in total, short press <Intercom Button>+ <Volume ->/<Volume +> to switch channels forward or backward. Note that the whole team needs to keep the same channel to talk to each other. When the signal is unstable, you can switch channels to adjust. “Channel n”



Two-person Bluetooth Intercom How To Pair With The Device

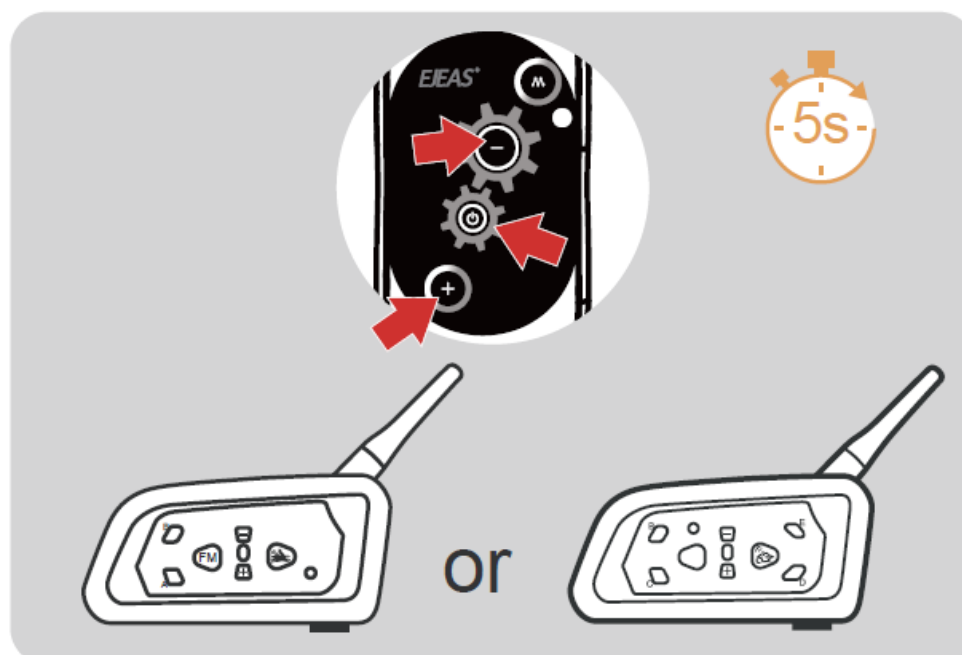
1. After powering on the device, press and hold <Phone/Power Button> + <Volume +> (about 5s) until the red and blue lights flash alternately, and the pairing voice prompts "Intercom Pairing". Wait for the connection to other intercoms. Red light and blue light flash alternately
2. The other intercom enters the pairing state using the same operation. After the two intercoms discover each other, one of them will initiate the pairing connection. Red light and blue light flash alternately " INTERCOME PAIRING"



The connection is successful and the intercom begins. "PAIRING SUCCESSFUL"

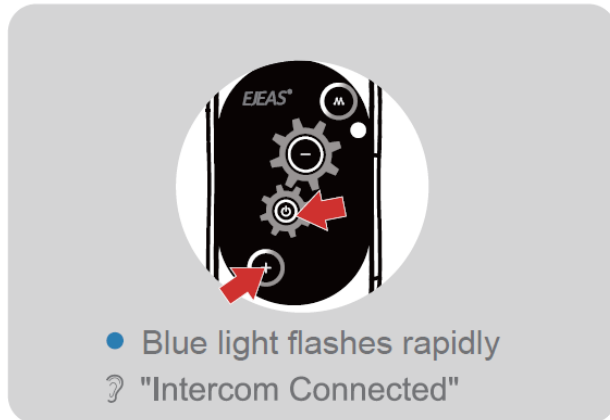
Pairing with The Old Models

1. Simultaneously press and hold <Phone/Power Button> + <Volume +> + <Intercom Button> for approx. 5 seconds to start pairing (red and blue lights flash alternately).
Red light and blue light flash alternately "INTERCOMME PAIRING"
2. For older models (V6/V4) follow the instructions to enter the search and wait for successful pairing.



Intercom Connection

Intercom Connection



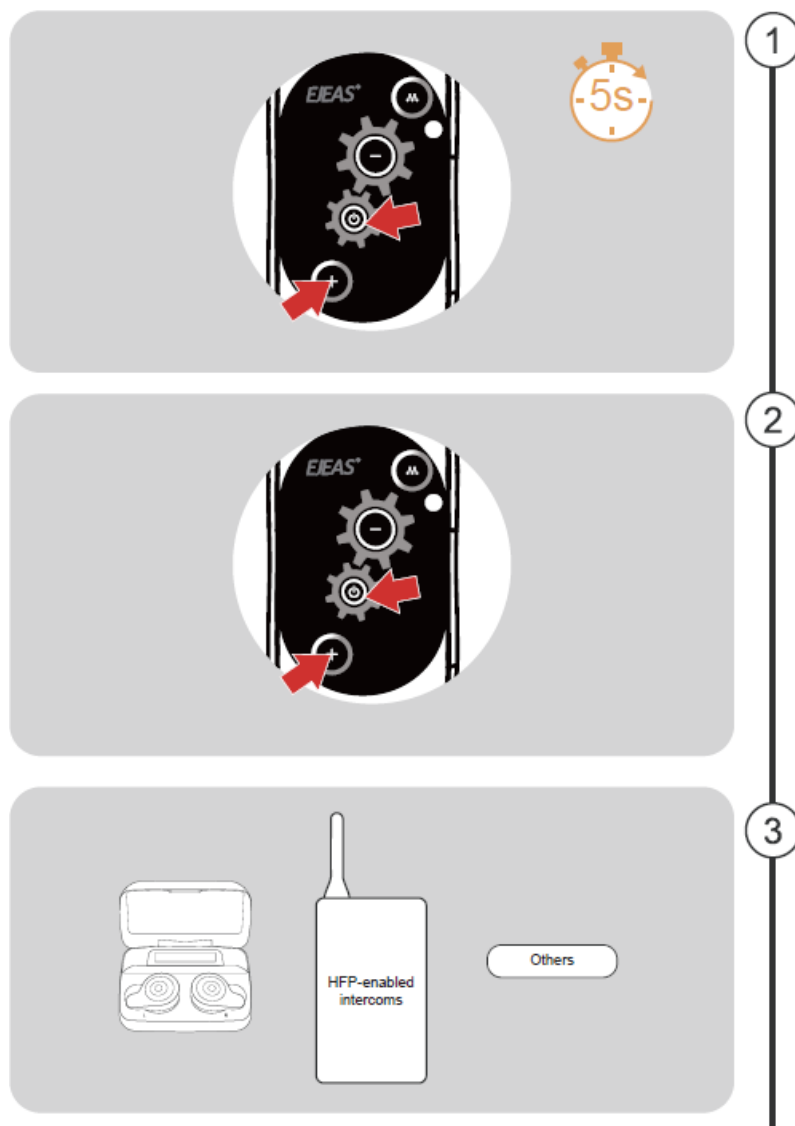
Intercom Disconnection



Pairing With Headsets or Other Branded Bluetooth Intercoms Search

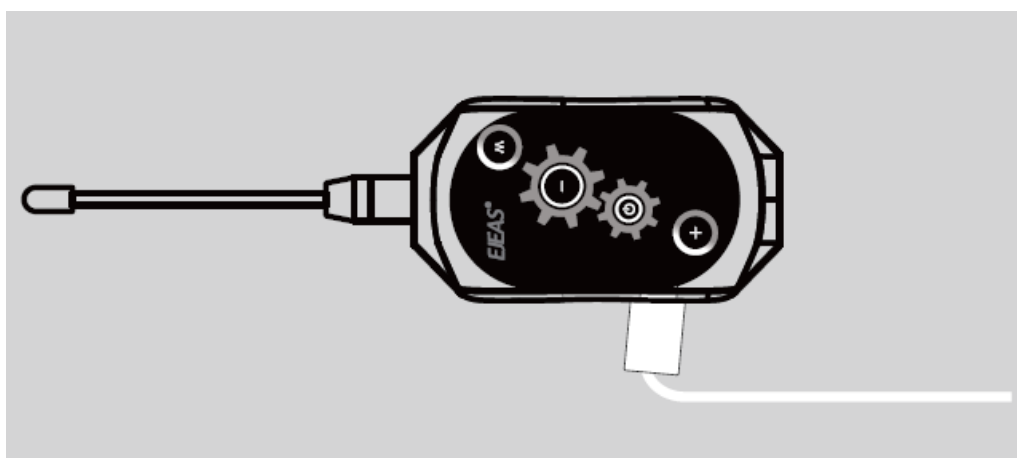
Note: It is not guaranteed to be compatible with all Bluetooth headsets or intercoms on the market.

1. Long press <Phone/Power Button> + <Volume +> (approx. 5s) until the red and blue lights flash alternately and the prompt "Intercom pairing" is displayed. Red light and blue light flash alternately "Intercom Pairing"
2. Click again on <Phone/Power Button> + <Volume +>. The voice prompts "Intercom Searching". The red and blue lights flash alternately. Red light and blue light flash alternately "Intercom Searching"
3. At this point the intercom is searching for other intercoms in the pairing state, and when it finds another intercom, it will initiate the pairing.



Successful Pairing

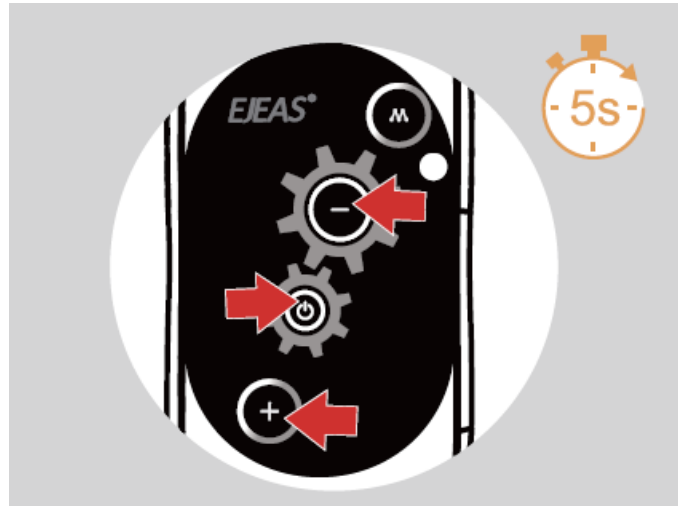
Firmware Upgrades



Connect to the computer with a USB data cable. Download and open the “EJEAS Upgrade.exe” upgrade software. Click on the “Upgrade” button to start and wait for the upgrade to complete.

Note: Upgrading must use the standard data cable from EJEAS.

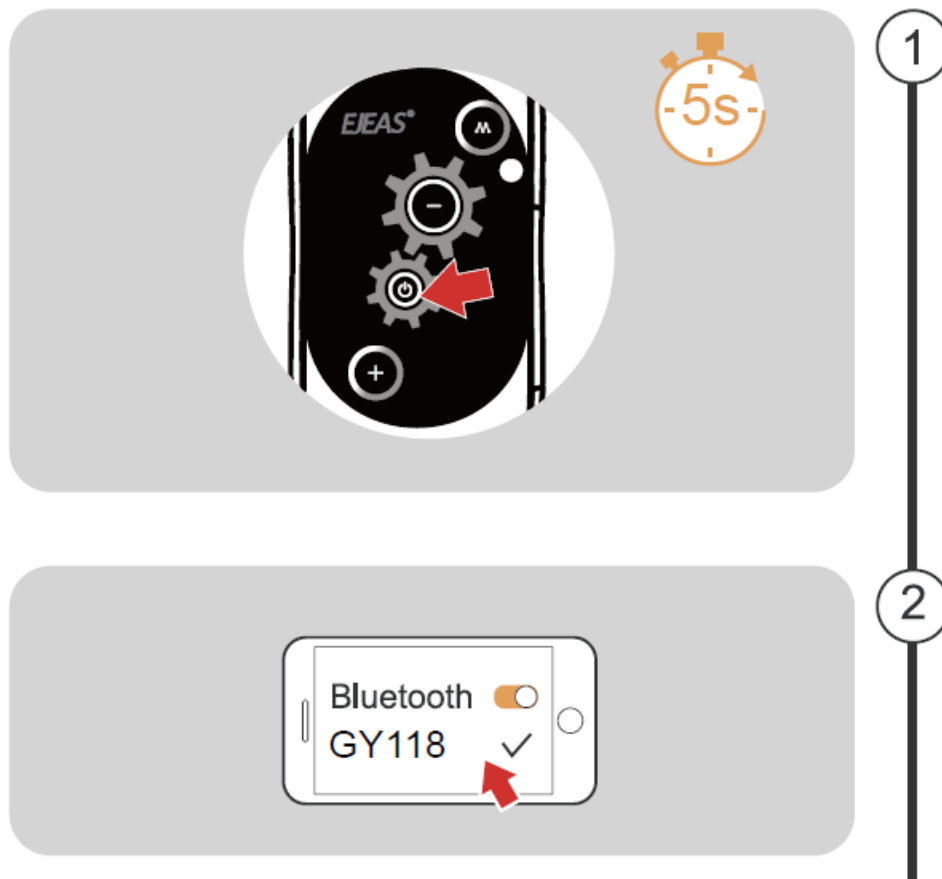
Restore Default Settings



Press and hold <Phone/Power Button> + <Volume +> + <Volume -> for about 5s, the voice prompts “Restore Default Settings” to delete the pairing record, and then automatically reboot the phone. “Restore Default Settings”

Mobile Phone Pairing

This intercom supports connection to mobile phones for playing songs, making calls, and waking up voice assistants. Up to 2 mobile phones can be connected at the same time.



1. After powering on the device, press and hold (approx. 5s) the <Phone/Power Button> until the red and blue lights flash alternately and the voice prompts “Phone Pairing”. Red light and blue light flash alternately
2. The phone searches for the device named “GY118” using Bluetooth. Click on it to connect.

Connection successful • Blue light double flashes slowly “Pairing Successful, Connected”

The current battery level is displayed on the phone’s Bluetooth icon (Mobile phone HFP connection required)



Bluetooth Reconnection With Mobile Phones

After switching on, it automatically connects back to the last connected phone Bluetooth. When there is no connection, click on the < Phone/Power Button > to reconnect with the last mobile device that was connected to Bluetooth.



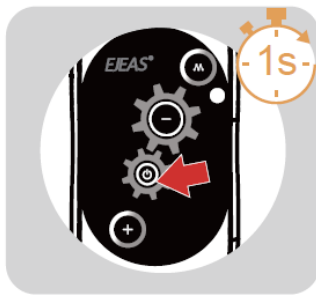
Mobile Control: Call Answering

When a call comes in, click on the <Phone/Power Button>



- **Call Rejection:** When a call come,press the <Phone/Power Button> for about 1s
- **Hang Up:** During a call ,click on the <Phone/Power Button>
- **Call Redial:** When standby/playing music,quickly doubleclick the <Phone/Power Button>.
- **Cancel Redial:** During redial,click on <Phone/Power Button>

Call Rejection



Hang Up



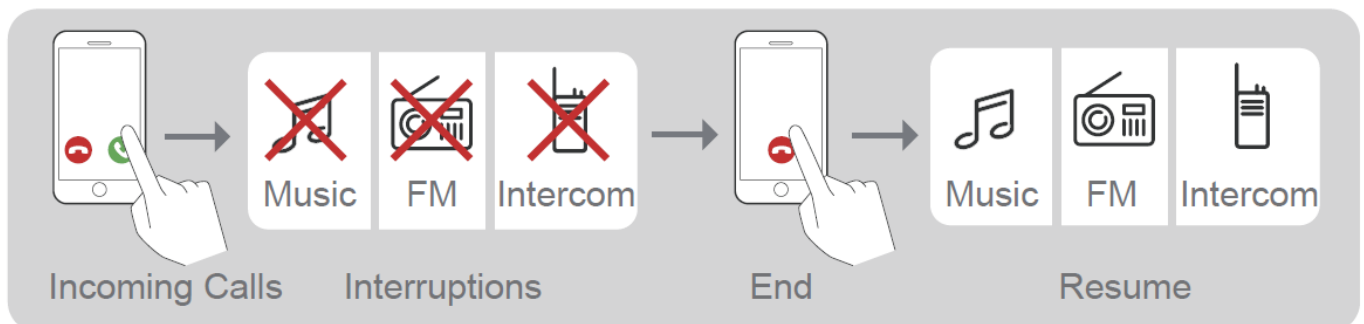
Call Redial



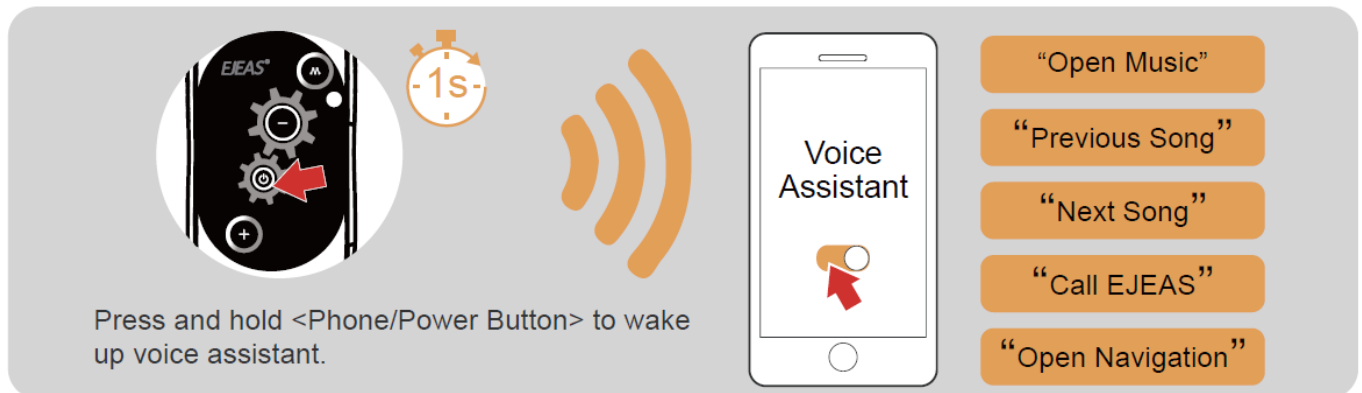
Cancel Redial



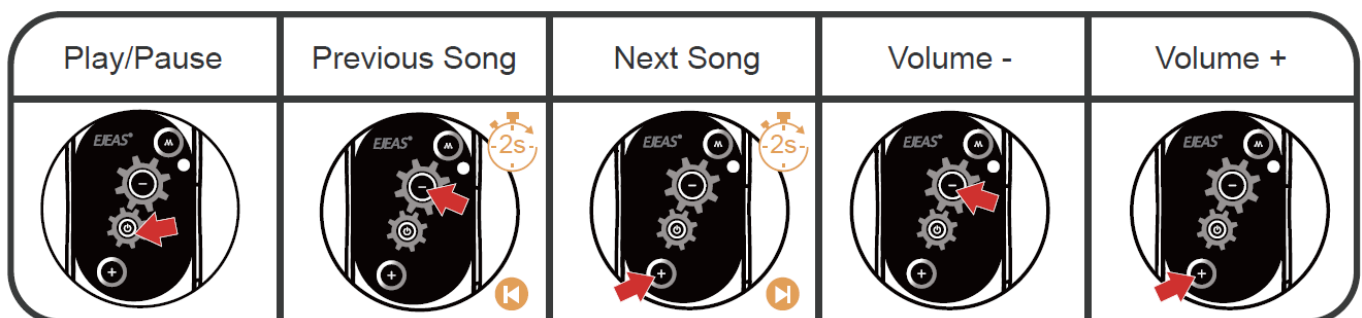
Phone Priority: When a call comes in, it will interrupt Bluetooth music, FM radio, intercom, and resume after hanging up.



Voice Assistant: When in standby/playing music, press and hold <Phone/Power Button>, it depends on your mobile phone.

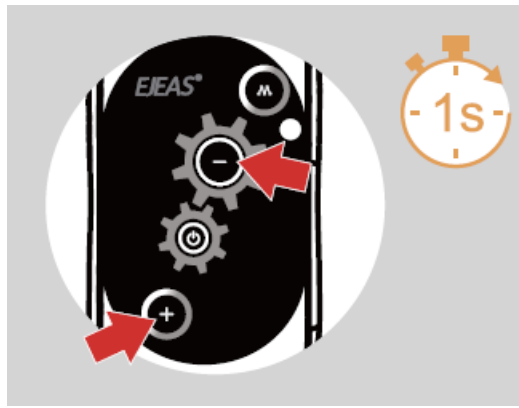


Music Control



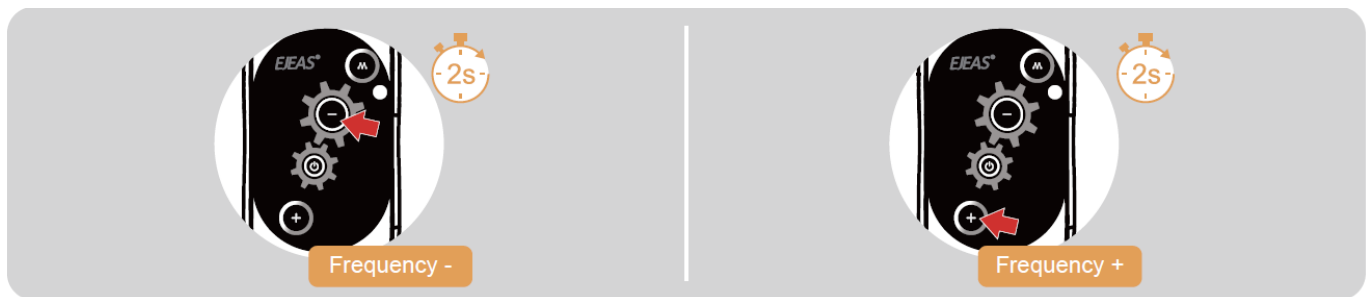
FM Radio: FM On/Off (76~108MHz)

After turning on the FM radio, it will automatically search for stations and play the found station. FM can be turned on during the intercom, and you can listen to the radio while talking.

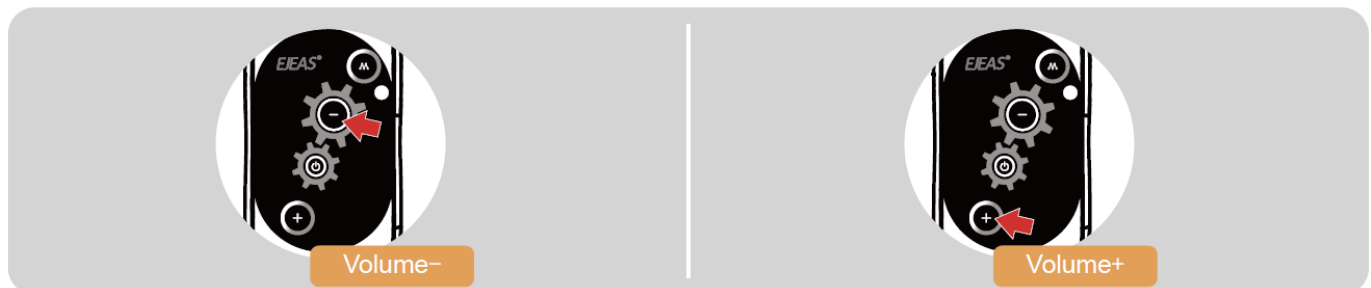


- Press and hold <Volume +> + <Volume -> (approx. 1s). The prompt "FM Radio ".
- Press and hold <Volume +> + <Volume -> (approx. 1s) .The prompt "FM Radio Off ".

Switching Channels

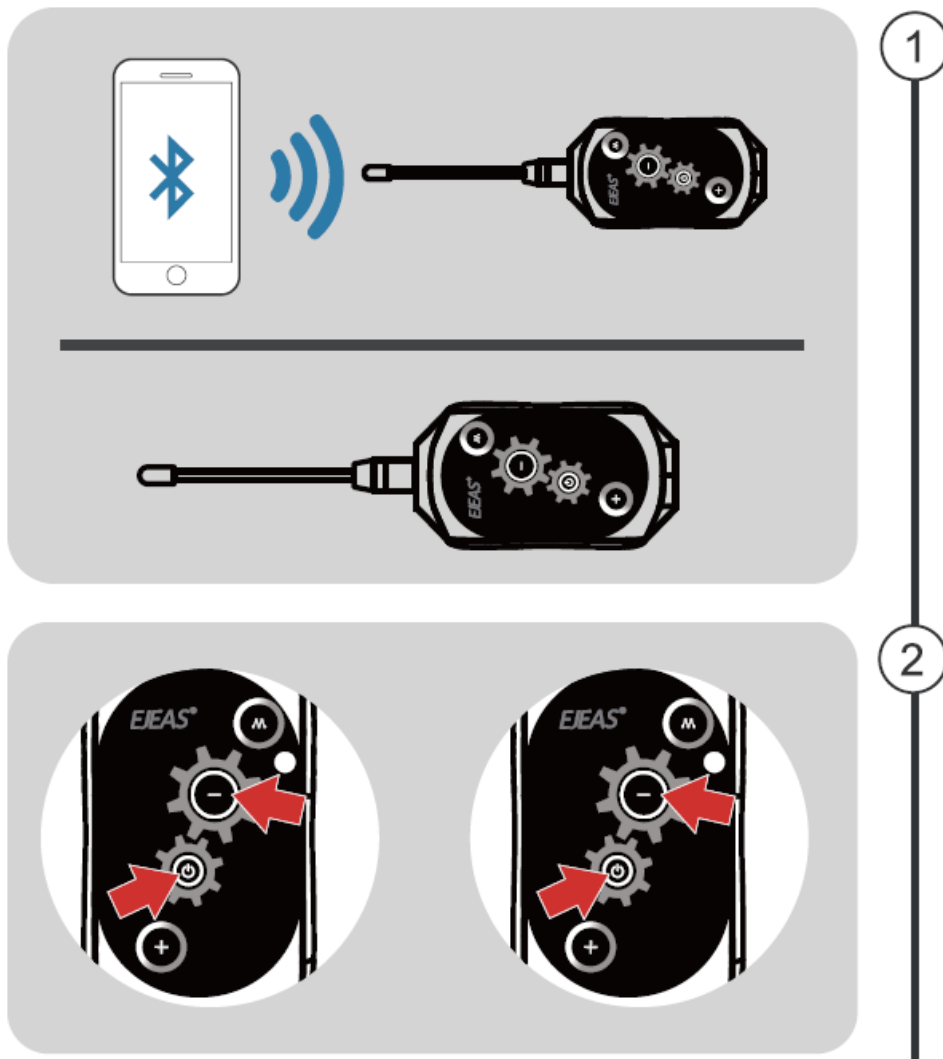


Volume Adjustment FM with a total of 7 volume levels When using FM alone



Music Share

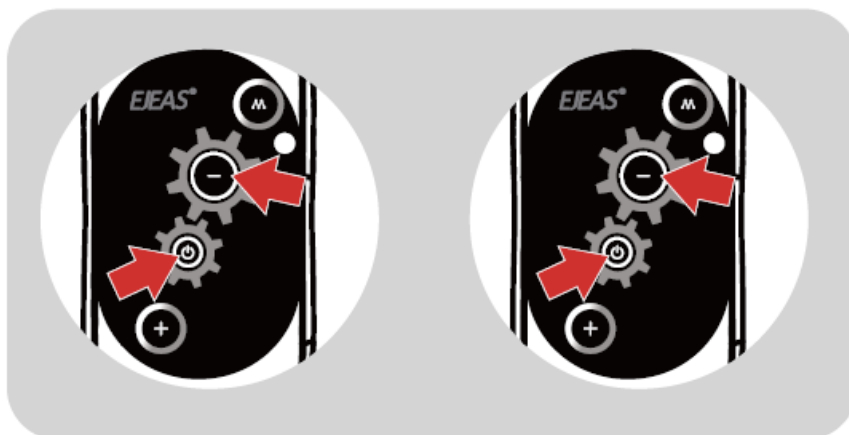
- Share the music played by Bluetooth on your phone to another device, and this function cannot be used during Bluetooth intercom.
 - This function cannot be used when two phones are connected simultaneously.
1. Take an intercom as the host, connect it to the phone, and the other one is the slave.
 2. Press the <Phone/Power Button>+<Volume -> at the same time between the host and slave to enter the music sharing search connection state.



After the connection is successful, play the phone music of the host, and the music can also be played from the speaker.

“Music Share Connected”

Press the <Phone/Power Button>+<Volume -> again to exit music sharing. **“Music Share Disconnected”**



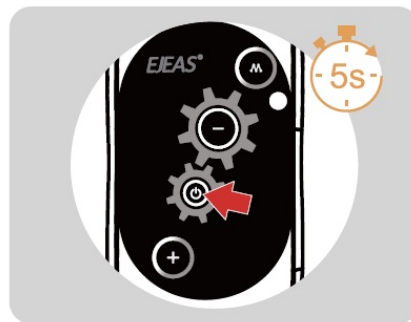
1. Download and install the SafeRiding mobile APP for the first time.
2. Press and hold (approx. 5s) <Phone/Power Button> until the red and blue lights flash alternately to enter • Red line ange Red light and blue light flash alternately
3. Open the APP, click on the Bluetooth icon in the top right corner, the interface shows the name of the intercom device searched, select the intercom device to be connected, click to connect. (IOS system need to enter the

phone pairing again, in the system settings->Bluetooth, connect audio Bluetooth).

4. Open the APP the next time you use it. Click the Bluetooth icon in the top right corner and click to select Intercom for connection from the paired devices.



①



②



③

FAQ

Q: How many people can participate in the intercom mode?

A: The intercom supports up to 6 people in the conversation mode and has 5 channels in total.


Q: Can I use the microphone mute feature during regular Bluetooth calls?

A: The microphone mute feature is only valid for Mesh intercom usage and cannot be used during regular Bluetooth calls.

Q: How do I know when the device is fully charged?

A: The red light on the device will turn off when it is fully charged, indicating that the charging process is complete.

Documents / Resources

	<p>EJEAS GY118 Bluetooth Intercom Headset [pdf] Instruction Manual</p> <p>GY118, 6-worker, GY118 Bluetooth Intercom Headset, GY118, Bluetooth Intercom Headset, Intercom Headset, Headset</p>
---	---

References

- [User Manual](#)

[Manuals+](#), [Privacy Policy](#)

This website is an independent publication and is neither affiliated with nor endorsed by any of the trademark owners. The "Bluetooth®" word mark and logos are registered trademarks owned by Bluetooth SIG, Inc. The "Wi-Fi®" word mark and logos are registered trademarks owned by the Wi-Fi Alliance. Any use of these marks on this website does not imply any affiliation with or endorsement.