

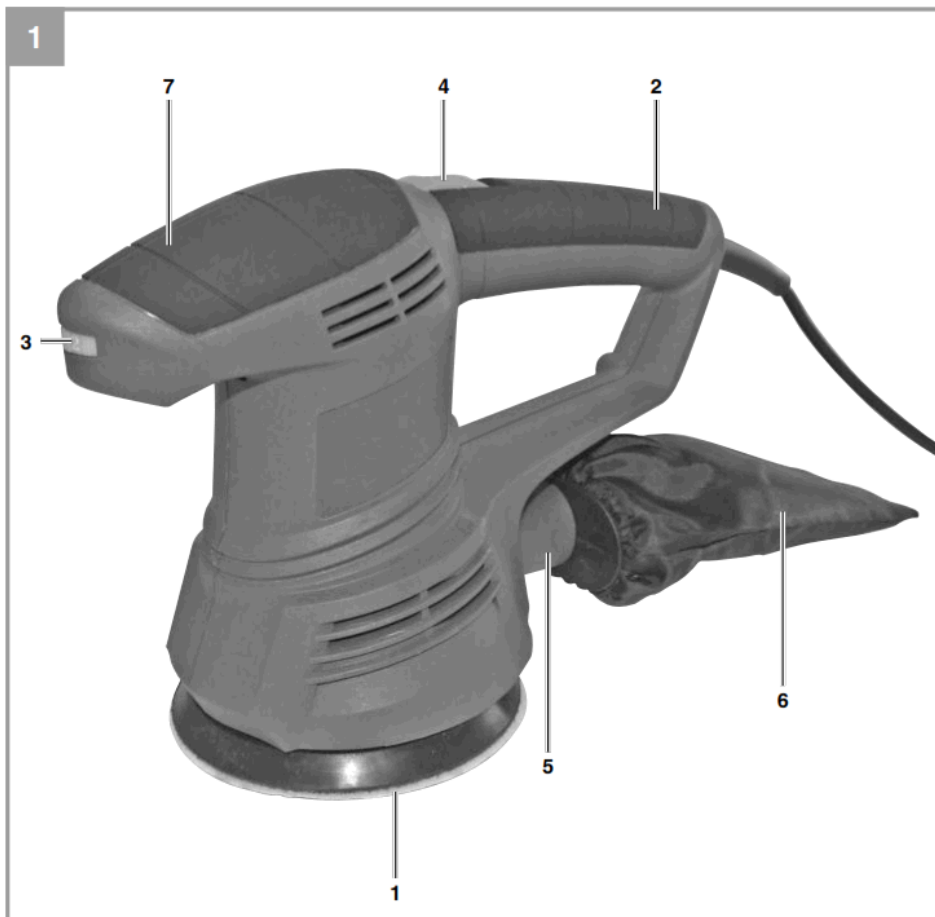


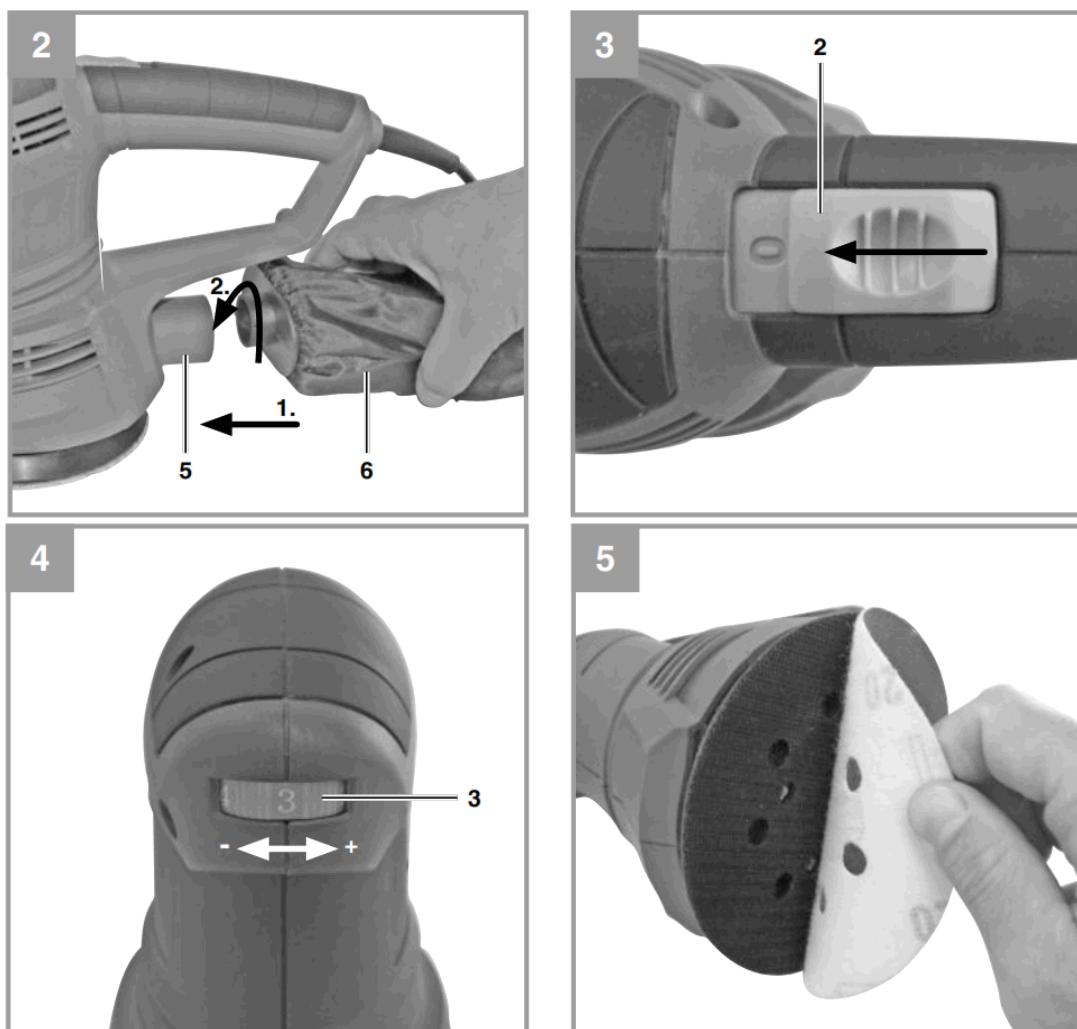
## Einhell TC-RS Rotating Sander Instructions

[Home](#) » [Einhell](#) » Einhell TC-RS Rotating Sander Instructions 

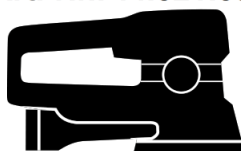
# Einhell®

Original operating instructions  
Rotating Sander  
TC-RS 38 E





Art.-Nr.: 44.621.65



I.-Nr.: 11014



**Danger!** – Read the operating instructions to reduce the risk of injury



**Caution! Wear ear-muffs.** The impact of noise can cause damage to hearing.



**Caution! Wear a breathing mask.** Dust that is injurious to health can be generated when working on wood and other materials. Never use the device to work on any materials containing asbestos!



**Caution! Wear safety goggles.** Sparks generated during working or splinters, chips, and dust emitted by the device can cause loss of sight.

### **Danger!**

When using the equipment, a few safety precautions must be observed to avoid injuries and damage. Please read the complete operating instructions and safety regulations with due care. Keep this manual in a safe place, so that the information is available at all times. If you give the equipment to any other person, hand over these operating instructions and safety regulations as well. We cannot accept any liability for damage or accidents which arise due

to a failure to follow these instructions and the safety instructions.

## Contents

- 1 Safety regulations
- 2 Layout and items supplied
- 3 Proper use
- 4 Technical data
- 5 Before starting the equipment
- 6 Operation
- 7 Replacing the power cable
- 8 Cleaning, maintenance, and ordering of spare parts
- 9 Disposal and recycling
- 10 Storage
- 11 Warranty certificate
- 12 Documents / Resources
  - 12.1 References
- 13 Related Posts

## Safety regulations

The corresponding safety information can be found in the enclosed booklet.

### **Danger!**

**Read all safety regulations and instructions.**

Any errors made in following the safety regulations and instructions may result in an electric shock, fire, and/or serious injury.

Keep all safety regulations and instructions in a safe place for future use.

## Layout and items supplied

### 2.1 Layout (Fig. 1)

1. Grinding/sanding disk
2. Handle
3. Speed controller
4. Operating switch
5. Dust bag connector
6. Dust bag
7. Additional handle

### 2.2 Items supplied

Please check that the article is complete as specified in the scope of delivery. If parts are missing, please contact our service center or the sales outlet where you made your purchase at the latest within 5 working days after purchasing the product and upon presentation of a valid bill of purchase. Also, refer to the warranty table in the service information at the end of the operating instructions.

- Open the packaging and take out the equipment with care.
- Remove the packaging material and any packaging and/or transportation braces (if available).
- Check to see if all items are supplied.
- Inspect the equipment and accessories for transport damage.

- If possible, please keep the packaging until the end of the guarantee period.

### **Danger!**

The equipment and packaging material are not toys. Do not let children play with plastic bags, foils, or small parts. There is a danger of swallowing or suffocating!

- Original operating instructions
- Safety instructions

### **Proper use**

The equipment is designed for the grinding/sanding of wood, iron, plastic, and similar materials using the appropriate grinding/sanding paper. The machine is not suitable for wet grinding/sanding.

The equipment is to be used only for its prescribed purpose. Any other use is deemed to be a case of misuse. The user/operator and not the manufacturer will be liable for any damage or injuries of any kind caused as a result of this.

Please note that our equipment has not been designed for use in commercial, trade, or industrial applications. Our warranty will be voided if the machine is used in commercial, trade, or industrial businesses or for equivalent purposes.

### **Technical data**

Voltage ..... 230 V ~ 50 Hz  
 Power input ..... 380 W  
 Grinding/sanding area ..... Ø 125 mm  
 Abrasive paper size ..... Ø 125 mm  
 Idling speed ..... 6,000-13,000 min<sup>-1</sup>  
 Oscillating speed ..... 12,000-26,000 min<sup>-1</sup>  
 Oscillatory circuit ..... 2.0 mm  
 Protection class: ..... II/□  
 Weight: ..... 1.9 kg

### **Danger!**

#### **Sound and vibration**

Sound and vibration values were measured in accordance with EN 60745.

L<sub>pA</sub> sound pressure level ..... 84 dB(A)  
 L<sub>pA</sub> uncertainty ..... 3 dB  
 L<sub>WA</sub> sound power level ..... 95 dB(A)  
 K<sub>WA</sub> uncertainty ..... 3 dB

#### **Wear ear-muffs.**

The impact of noise can cause damage to hearing.

Total vibration values (vector sum of three directions) determined in accordance with EN 60745.

#### **Handle**

Vibration emission value a<sub>h</sub> = 10.223 m/s<sup>2</sup>

K uncertainty = 1.5 m/s<sup>2</sup>

The specified vibration value was established in accordance with a standardized testing method. It may change according to how the electric equipment is used and may exceed the specified value in exceptional circumstances.

The specified vibration value can be used to compare the equipment with other electric power tools.

The specified vibration value can be used for the initial assessment of a harmful effect.

**Keep the noise emissions and vibrations to a minimum.**

- Only use appliances that are in perfect working order.
- Service and clean the appliance regularly.
- Adapt your working style to suit the appliance.
- Do not overload the appliance.
- Have the appliance serviced whenever necessary.
- Switch the appliance off when it is not in use.
- Wear protective gloves.

### **Caution!**

#### **Residual risks**

Even if you use this electric power tool in accordance with instructions, certain residual risks cannot be ruled out. The following hazards may arise in connection with the equipment's construction and layout:

1. Lung damage if no suitable protective dust mask is used.
2. Damage to hearing if no suitable ear protection is used.
3. Health damage is caused by hand-arm vibrations if the equipment is used over a prolonged period or is not properly guided and maintained.

### **Before starting the equipment**

Before you connect the equipment to the mains supply make sure that the data on the rating plate is identical to the mains data.

#### **Warning!**

Always pull the power plug before making adjustments to the equipment.

#### **5.1 Fitting the dust bag (Fig. 2)**

Place the dust bag (6) on the dust bag connector (5) and secure it by turning it.

The dust is extracted directly through the grinding/sanding paper and the grinding/sanding disk and into the dust bag.

### **Caution!**

For health safety reasons it is imperative that you use a dust bag.

#### **5.2 Fastening the abrasive paper (Fig. 5)**

Easy replacement using Velcro fastening. Ensure that the extractor holes on the abrasive paper and grinding/sanding disc line up.

### **Operation**

#### **6.1 Switching the equipment ON/OFF (Fig. 3)**

##### **To switch on:**

Push the ON/OFF switch (4) forwards.

##### **To switch off:**

Push back the ON/OFF switch (4) into its starting position.

#### **6.2 Speed Control (Fig. 5/Item 4)**

To pre-select the speed turn the knurled screw (3) on the switch.

Plus direction: Higher speed

Minus direction: Lower speed

#### **6.3 Working with the eccentric grinder/sander**

- Place the whole surface area of the sanding disk on the material.
- Switch on the machine and move it with gentle pressure over the workpiece in completely circular movements or move it to and fro and up and down.
- Use coarse paper for coarse sanding and finer paper for finish sanding. You can find the best paper for the job by means of testing.

### **Caution!**

The dust generated when working with the machine may be harmful.

- Always wear goggles and a dust mask when carrying out sanding/grinding work.
- Everybody who uses the machine or enters the workplace must wear a dust mask.
- Do not eat, drink or smoke at the workplace.
- Do not use the machine on paints that contain lead.

## **Replacing the power cable**

### **Danger!**

If the power cable for this equipment is damaged, it must be replaced by the manufacturer or its after-sales service or similarly trained personnel to avoid danger.

## **Cleaning, maintenance, and ordering of spare parts**

**Danger!** Always pull out the mains power plug before starting any cleaning work.

### **8.1 Cleaning**

- Keep all safety devices, air vents, and the motor housing free of dirt and dust as far as possible. Wipe the equipment with a clean cloth or blow it with compressed air at low pressure.
- We recommend that you clean the device immediately each time you have finished using it.
- Clean the equipment regularly with a moist cloth and some soft soap. Do not use cleaning agents or solvents; these could attack the plastic parts of the equipment. Ensure that no water can seep into the device. The ingress of water into an electric tool increases the risk of an electric shock.

### **8.2 Carbon brushes**

In case of excessive sparking, have the carbon brushes checked only by a qualified electrician. **Danger!** The carbon brushes should not be replaced by anyone but a qualified electrician.

### **8.3 Maintenance**

There are no parts inside the equipment which require additional maintenance.

### **8.4 Ordering replacement parts:**

Please quote the following data when ordering replacement parts:

- Type of machine
- Article number of the machine
- Identification number of the machine
- Replacement part number of the part required

For our latest prices and information please go to [www.isc-gmbh.info](http://www.isc-gmbh.info)

## Disposal and recycling

The equipment is supplied in packaging to prevent it from being damaged in transit. The raw materials in this packaging can be reused or recycled. The equipment and its accessories are made of various types of material, such as metal and plastic. Never place defective equipment in your household refuse. The equipment should be taken to a suitable collection center for proper disposal. If you do not know the whereabouts of such a collection point, you should ask your local council offices.

## Storage

Store the equipment and accessories in a dark and dry place at above freezing temperature. The ideal storage temperature is between 5 and 30 °C. Store the electric tool in its original packaging.



For EU countries only

Never place any electric power tools in your household refuse.

To comply with European Directive 2012/19/EC concerning old electric and electronic equipment and its implementation in national laws, old electric power tools have to be separated from other waste and disposed of in an environment-friendly fashion, e.g. by taking to a recycling depot.

Recycling alternative to the return request:

As an alternative to returning the equipment to the manufacturer, the owner of the electrical equipment must make sure that the equipment is properly disposed of if he no longer wants to keep the equipment. The old equipment can be returned to a suitable collection point that will dispose of the equipment in accordance with the national recycling and waste disposal regulations. This does not apply to any accessories or aids without electrical components supplied with the old equipment.

The reprinting or reproduction by any other means, in whole or in part, of documentation and papers accompanying products, is permitted only with the express consent of the ESC GmbH.

Subject to technical changes

## Service information

We have competent service partners in all countries named on the guarantee certificate whose contact details can also be found on the guarantee certificate. These partners will help you with all service requests such as repairs, spare and wearing part orders, or the purchase of consumables.

Please note that the following parts of this product are subject to normal or natural wear and that the following parts are therefore also required for use as consumables.

Category	Example
Wear parts*	Carbon brushes, grinding/sanding plate
Consumables*	Grinding/sanding paper
Missing parts	

\* Not necessarily included in the scope of delivery!

In the event of defects or faults, please register the problem on the internet at [www.isc-gmbh.info](http://www.isc-gmbh.info). Please ensure that you provide a precise description of the problem and answer the following questions in all cases:

- Did the equipment work at all or was it defective from the beginning?
- Did you notice anything (symptom or defect) prior to the failure?
- What malfunction does the equipment have in your opinion (main symptom)? Describe this malfunction.

## Warranty certificate

Dear Customer,

All of our products undergo strict quality checks to ensure that they reach you in perfect condition. In the unlikely event that your device develops a fault, please contact our service department at the address shown on this guarantee card. You can also contact us by telephone using the service number shown. Please note the following terms under which guarantee claims can be made:

1. These guarantee conditions regulate additional guarantee services. Your statutory guarantee claims are not affected by this guarantee. Our guarantee is free of charge to you.
2. Our guarantee only covers defects suffered by the device which have been verifiably caused by a material or manufacturing fault and is limited to the rectification of such defects or the replacement of the device at our discretion.

Please note that our devices are not designed for use in commercial, trade, or professional applications. A guarantee contract will not be created if the device has been used by commercial, trade, or industrial business or has been exposed to similar stresses during the guarantee period.

3. The following are not covered by our guarantee:
  - Damage to the device caused by a failure to follow the assembly instructions or due to incorrect installation, a failure to follow the operating instructions (for example connecting it to an incorrect mains voltage or current type), or a failure to follow the maintenance and safety instructions or by exposing the device to abnormal environmental conditions or by lack of care and maintenance.
  - Damage to the device caused by abuse or incorrect use (for example overloading the device or the use of unapproved tools or accessories), ingress of foreign bodies into the device (such as sand, stones or dust, transport damage), the use of force or damage caused by external forces (for example by dropping it).
  - Damage to the device or parts of the device caused by normal or natural wear or tear or by normal use of the device.
4. The guarantee is valid for a period of 24 months starting from the purchase date of the device. Guarantee claims should be submitted before the end of the guarantee period within two weeks of the defect being noticed. No guarantee claims will be accepted after the end of the guarantee period. The original guarantee period remains applicable to the device even if repairs are carried out or parts are replaced. In such cases, the work performed or parts fitted will not result in an extension of the guarantee period, and no new guarantee will become active for the work performed or parts fitted. This also applies if on-site service is used.
5. Please report the defective device to the following internet address to register your guarantee claim: [www.isc-gmbh.info](http://www.isc-gmbh.info). If the defect is covered by our guarantee, then the item in question will either be repaired immediately and returned to you or we will send you a new replacement device.

Of course, we are also happy offer a chargeable repair service for any defects which are not covered by the scope of this guarantee or for units that are no longer covered. To take advantage of this service, please send the device to our service address.

Also refer to the restrictions of this warranty concerning worn parts, consumables, and missing parts as set out in the service information in these operating instructions.

**ISC GmbH · D-94405 Landau/Isar**

Explains the following conformity according to EU directives and norms for the following product

**Exzentrerschleifer TC-RS 38 E (EINHELL)**

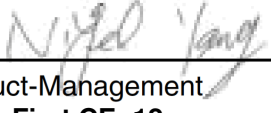


- ☐ 87/404/EC\_2009/105/EC
- ☐ 2005/32/EC\_2009/125/EC
- ☐ 2006/95/EC
- ☐ 2006/28/EC
- ☒ 2004/108/EC
- ☐ 2004/22/EC
- ☐ 1999/5/EC
- ☐ 97/23/EC
- ☐ 90/396/EC\_2009/142/EC
- ☐ 89/686/EC\_96/58/EC
- ☒ 2011/65/EC

- ☒ 2006/42/EC
- ☐ Annex IV
- Notified Body:
- Notified Body No.:
- Reg. No.:
- ☐ 2000/14/EC\_2005/88/EC
- ☐ Annex V
- ☐ Annex VI
- Noise: measured  $L_{WA}$  = dB (A); guarantee
- P = KW; L/Ø = cm
- Notified Body:
- ☐ 2004/26/EC
- Emission No.:

Standard references: EN 60745-1; EN 60745-2-4;  
EN 55014-1; EN 55014-2; EN 61000-3-2; EN 61000-3-3  
Landau/Isar, den 11.06.2014

  
\_\_\_\_\_  
Weichselgartner/General-Manager

  
\_\_\_\_\_  
Yang/Product-Management

**First CE: 12**

**Art.-No.:** 44.621.65

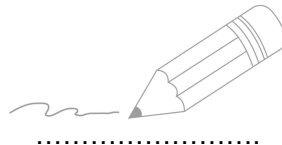
**I.-No.:** 11014

**Subject to change without notice**


**Archive-File/Record:** NAPR010756

**Documents registrar:** Protschka Daniel

**Anl\_TC\_RS\_38\_E\_SPK1.indb**



## Documents / Resources

	<p><a href="#">Einhell TC-RS Rotating Sander</a> [pdf] Instructions TC-RS Rotating Sander, Rotating Sander, 38-E</p>
---	--

## References

- [ISC GmbH Spareparts for Tools and Gardenequipment](#)