




Einhell TC-OS 1520/1 Orbital Sander Instruction Manual

[Home](#) » [Einhell](#) » Einhell TC-OS 1520/1 Orbital Sander Instruction Manual 

Contents

- 1 Einhell TC-OS 1520/1 Orbital Sander
- 2 Product Information
- 3 Product Usage Instructions
- 4 Assembly and Setup
 - 4.1 Operation
- 5 Cleaning, Maintenance, and Ordering Replacement Parts
- 6 Safety regulations
- 7 Layout and items supplied
- 8 Proper use
- 9 Technical data
- 10 Before starting the equipment
- 11 Operation
- 12 Replacing the power cable
- 13 Maintenance
- 14 Disposal and recycling
- 15 Storage
- 16 Service information
- 17 Warranty certificate
- 18 Documents / Resources
 - 18.1 References
- 19 Related Posts



Einhell TC-OS 1520/1 Orbital Sander



Product Information

The TC-OS 1520/1 is an orbital sander designed for sanding and finishing wood and other materials. It comes with a dust extraction adapter that can be connected to a suitable vacuum cleaner to minimize dust and debris during use. The sander has a vibration-emission value of 11.4 m/s² and a sound pressure level of 90 dB(A) with an uncertainty of 3 dB. The product also has a safety switch to prevent accidental start-up.

Product Usage Instructions

Before Use

Before using the TC-OS 1520/1, ensure that you have read and understood the safety instructions provided in the user manual. Also, check that all packaging and transport safety measures have been removed, if any, before turning the device on.

Technical Specifications

The TC-OS 1520/1 has the following technical specifications:

- Sound pressure level L_{pA}: 90 dB(A)
- Uncertainty factor K_{pA}: 3 dB
- Sound power level L_{WA}: 101 dB(A)
- Uncertainty factor K_{WA}: 3 dB
- Vibration emission value a_h: 11.4 m/s²
- Uncertainty factor K: 1.5 m/s²

The vibration emission value is measured according to EN 60745 and can be used to compare the device with other power tools.

Assembly and Setup

Mounting the Dust Extraction Adapter

To mount the dust extraction adapter, follow these steps:

1. Attach the adapter (5) to the vacuum cleaner connection point (a).

2. Twist the adapter as shown in Image 2 until it locks in place.
3. Connect the adapter to a suitable dust extraction system.

Attaching Sandpaper using the Clamp Device

When attaching sandpaper using the clamp device, follow these steps:

1. Ensure that you are using sandpaper with the correct dimensions and hole pattern.
2. Lift the sander's clamp device (6).
3. Place the sandpaper on the sander's base plate and align it with the clamp device.
4. Lower the clamp device to secure the sandpaper in place.

Attaching Sandpaper using the Hook-and-Loop Fastener

When attaching sandpaper using the hook-and-loop fastener, follow these steps:

1. Ensure that you are using sandpaper with the correct dimensions and hole pattern.
2. Peel off the protective layer from the sander's base plate (7).
3. Place the sandpaper on the base plate and align it with the holes.
4. Press down firmly on the sandpaper to attach it to the base plate.

Operation

Switching On and Off

To switch on the device, press and hold down the safety switch (3) while pressing the power switch (2). To switch off, release the power switch.

Sanding

When sanding with the TC-OS 1520/1, ensure that you wear safety goggles, a dust mask, and ear muffs to protect yourself from dust, noise, and debris. Never use the device to work on any materials containing asbestos.

Cleaning, Maintenance, and Ordering Replacement Parts

Cleaning

After each use, disconnect the device from the power source and clean it using a soft brush or cloth. Do not use water or solvents to clean the device.

Maintenance

Regularly check the device for any signs of damage or wear and tear. If you notice any issues, contact the manufacturer or a qualified technician for repairs.

Ordering Replacement Parts

If you need to order replacement parts for the TC-OS 1520/1, provide the following information when contacting the manufacturer:

- Product name and model number
- Part name and number (if available)
- Date of purchase

Disposal and Recycling

Dispose of the TC-OS 1520/1 according to local regulations for electronic waste. Do not dispose of the device in

household waste.

Storage

When not in use, store the device in a dry and secure location away from children and pets.

- **Danger!** – Read the operating instructions to reduce the risk of injury
- **Caution!** Wear ear-muffs. The impact of noise can cause damage to hearing.
- **Caution!** Wear a breathing mask. Dust which is injurious to health can be generated when working on wood and other materials. Never use the device to work on any materials containing asbestos!
- **Caution!** Wear safety goggles. Sparks generated during working or splinters, chips and dust emitted by the device can cause loss of sight.

Danger!

When using the equipment, a few safety pre-cautions must be observed to avoid injuries and damage. Please read the complete operating instructions and safety regulations with due care. Keep this manual in a safe place, so that the information is available at all times. If you give the equipment to any other person, hand over these operating instructions and safety regulations as well. We cannot accept any liability for damage or accidents which arise due to a failure to follow these instructions and the safety instructions.

Safety regulations

The corresponding safety information can be found in the enclosed booklet.

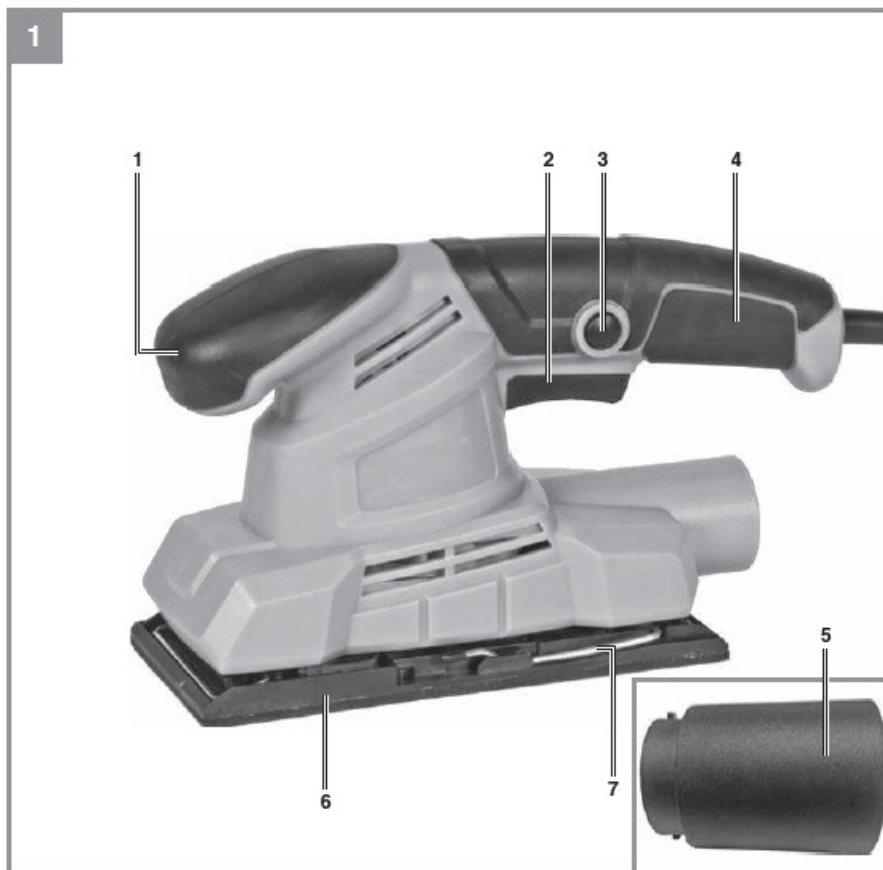
Danger!

Read all safety regulations and instructions. Any errors made in following the safety regulations and instructions may result in an electric shock, fire and/or serious injury.

Keep all safety regulations and instructions in a safe place for future use.

Layout and items supplied

Layout (Fig. 1)



1. Additional handle
2. Operating switch
3. Locking button
4. Handle
5. Dust extraction adapter
6. Oscillating plate
7. Clamp lever

Items supplied

Please check that the article is complete as specified in the scope of delivery. If parts are missing, please contact our service center or the sales outlet where you made your purchase at the latest within 5 working days after purchasing the product and upon presentation of a valid bill of purchase. Also, refer to the warranty table in the service information at the end of the operating instructions.

- Open the packaging and take out the equipment with care.
- Remove the packaging material and any packaging and/or transportation braces (if available).
- Check to see if all items are supplied.
- Inspect the equipment and accessories for transport damage.
- If possible, please keep the packaging until the end of the guarantee period.

Danger!

The equipment and packaging material are not toys. Do not let children play with plastic bags, foils or small parts. There is a danger of swallowing or suffocating!

- Orbital grinder/sander
- Dust extraction adapter

- 3x abrasive paper
- Original operating instructions
- Safety instructions

Proper use

The equipment is designed for the grinding/sanding of wood, iron, plastic and similar materials using the appropriate grinding/sanding paper. The machine is not suitable for wet grinding/sanding.

The equipment is to be used only for its prescribed purpose. Any other use is deemed to be a case of misuse. The user / operator and not the manufacturer will be liable for any damage or injuries of any kind caused as a result of this.

Please note that our equipment has not been de-signed for use in commercial, trade or industrial applications. Our warranty will be voided if the machine is used in commercial, trade or industrial businesses or for equivalent purposes.

Technical data

- Mains voltage: 230 V ~ 50 Hz
- Power input: 150 W
- Idling speed:12000 min⁻¹
- Orbits:24000 min⁻¹
- Grinding/sanding area:187 x 90 mm

Grinding/sanding

- paper size (clamp):230 x 93 mm

Grinding/sanding

- paper size (Velcro):187 x 93 mm
- Protection class: II
- Weight:1.5 kg

Danger!

Sound and vibration

Sound and vibration values were measured in accordance with EN 60745.

- LpA sound pressure level 90 dB(A)
- KpA uncertainty3 dB
- LWA sound power level 101 dB(A)
- KWA uncertainty3 dB

Wear ear-muff s.

The impact of noise can cause damage to hearing.

Total vibration values (vector sum of three directions) determined in accordance with EN 60745.

Vibration emission value $a_h = 11.4 \text{ m/s}^2$

K uncertainty = 1.5 m/s^2

The specified vibration value was established in accordance with a standardized testing method. It may change

according to how the electric equipment is used and may exceed the specified value in exceptional circumstances.

The specified vibration value can be used to compare the equipment with other electric power tools.

The specified vibration value can be used for initial assessment of a harmful.

Keep the noise emissions and vibrations to a minimum.

- Only use appliances which are in perfect working order.
- Service and clean the appliance regularly.
- Adapt your working style to suit the appliance.
- Do not overload the appliance.
- Have the appliance serviced whenever necessary.
- Switch the appliance off when it is not in use.
- Wear protective gloves.

Caution!

Residual risks

Even if you use this electric power tool in accordance with instructions, certain residual risks cannot be ruled out.

The following hazards may arise in connection with the equipment's construction and layout:

1. Lung damage if no suitable protective dust mask is used.
2. Damage to hearing if no suitable ear protection is used.
3. Health damage caused by hand-arm vibrations if the equipment is used over a pro-longed period or is not properly guided and maintained.

Before starting the equipment

Before you connect the equipment to the mains supply make sure that the data on the rating plate are identical to the mains data.

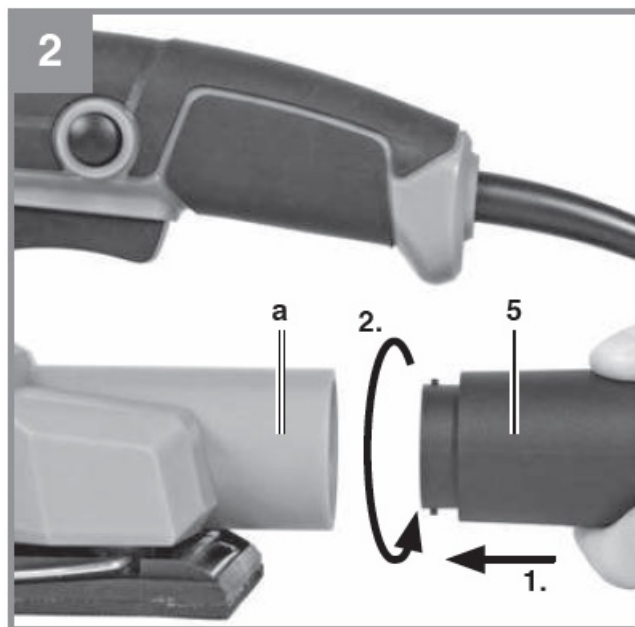
Warning!

Always pull the power plug before making adjustments to the equipment.

Fitting the dust extractor adapter (Fig. 2)

Slip the dust extractor adapter (5) onto the vacuum cleaner connector (a) and turn it clockwise as shown in Fig. 2.

Connect the dust extractor adapter (5) to a suitable dust extraction system.

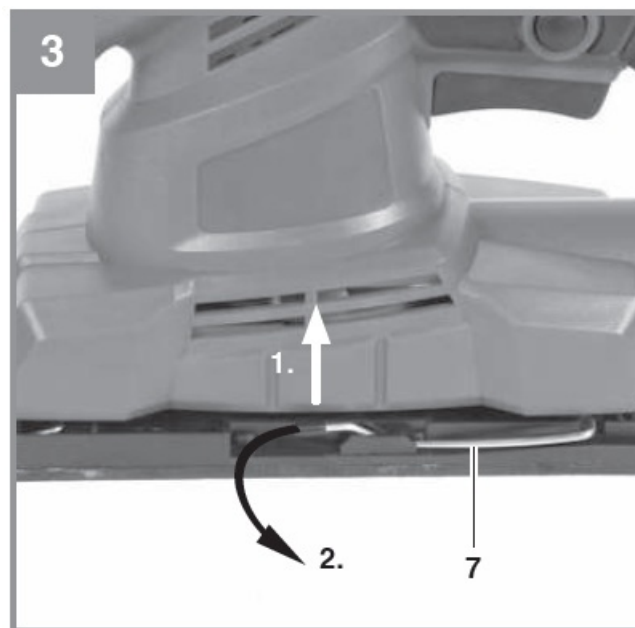


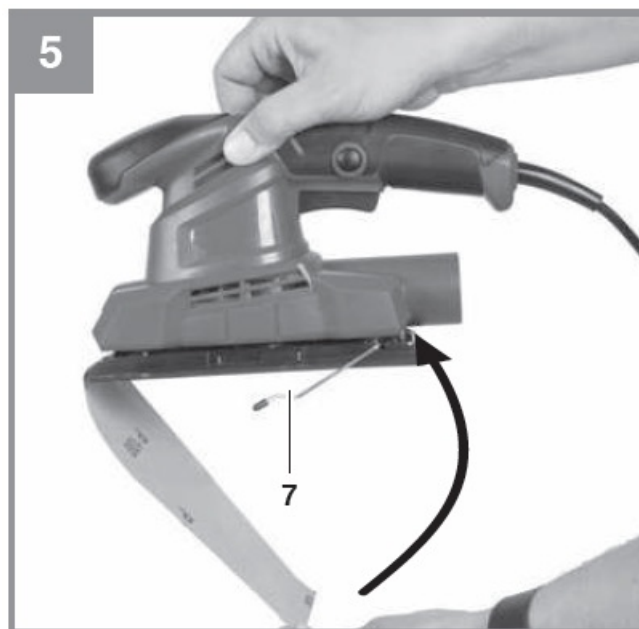
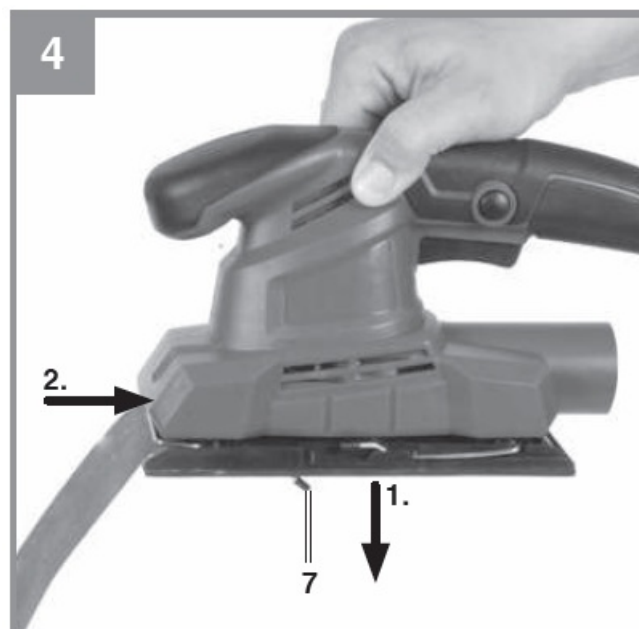
Important.

For health safety reasons it is imperative that you use a dust extraction system.

Securing sanding/grinding paper using a clamp (Fig. 3-6)

Only use sanding/grinding paper of the appropriate size and suitable perforations.

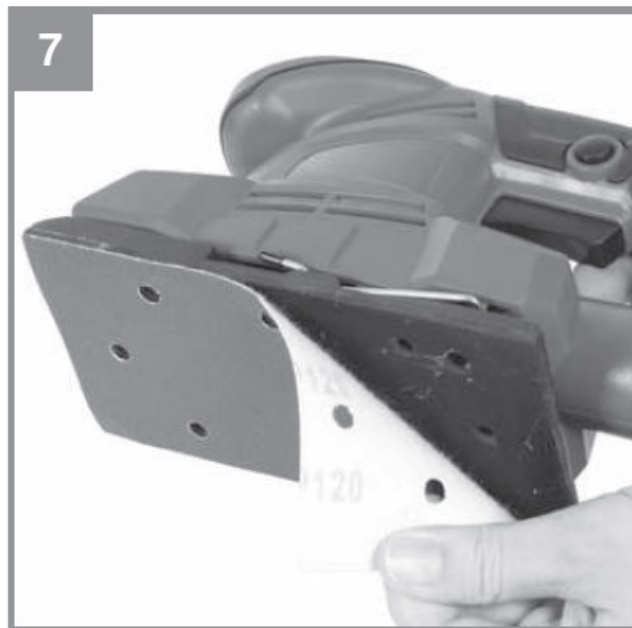




- Lift the lever (7) on the front of the orbital sander.
- Insert the sanding/grinding paper as far as possible into the open clamp and close the lever again.
- Place the sanding/grinding paper taut over the orbital plate (6) and clamp it again using the second lever (7) on the rear of the orbital sander.
- Make sure that the perforations in the sanding/grinding paper line up with the oscillating plate.

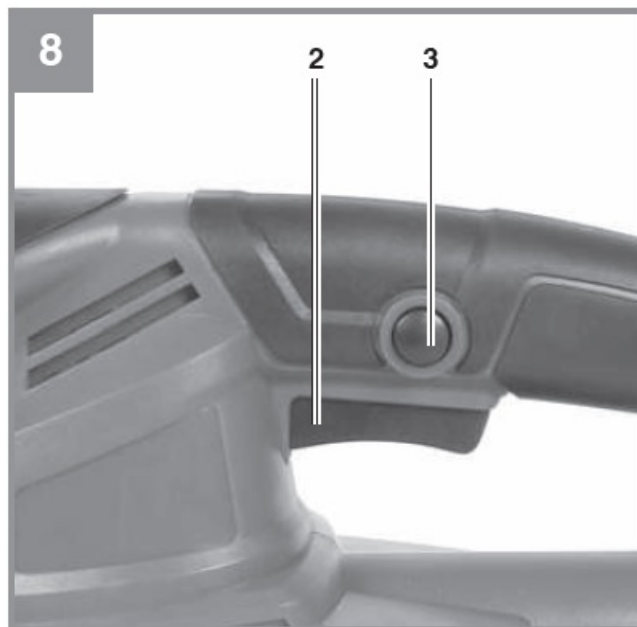
Fastening the sanding/grinding paper with the Velcro fastening system (Fig. 7)

- Only use sanding/grinding paper with the corresponding dimensions and matching perforations.
- Place the sanding/grinding paper onto the oscillating plate (6) as shown in figure 7. Make sure that the perforations in the sanding/grinding paper coincide with the oscillating plate.



Operation

Switching on and off (Fig. 8/Item 2)



- Switching on: Press the switch (2).
- Continuous operation: Secure the switch (2) with the locking button (3).
- Switching off : Release the switch (2).

Working with the orbital grinder/sander

- Place the whole surface area of the sanding disk on the material.
- Switch on the machine and move it with gentle pressure over the workpiece completely circular movements or moving it to and fro and up and down.
- Use a coarse paper for coarse sanding and a finer paper for finish sanding. You can find the best paper for the job by means of testing.

Caution!

The dust generated when working with the machine may be harmful.

- Always wear goggles and a dust mask when carrying out sanding/grinding work.
- Everybody who uses the machine or enters the workplace must wear a dust mask.
- Do not eat, drink or smoke at the workplace.
- Do not use the machine on paints which contain lead.

Replacing the power cable

Danger!

If the power cable for this equipment is damaged, it must be replaced by the manufacturer or its after-sales service or similarly trained personnel to avoid danger.

Maintenance

Danger!

Always pull out the mains power plug before starting any cleaning work.

Cleaning

- Keep all safety devices, air vents and the motor housing free of dirt and dust as far as possible. Wipe the equipment with a clean cloth or blow it with compressed air at low pressure.
- We recommend that you clean the device immediately each time you have finished using it.
- Clean the equipment regularly with a moist cloth and some soft soap. Do not use cleaning agents or solvents; these could attack the plastic parts of the equipment. Ensure that no water can seep into the device. The ingress of water into an electric tool increases the risk of an electric shock.

Carbon brushes

In case of excessive sparking, have the carbon brushes checked only by a qualified electrician. Danger! The carbon brushes should not be replaced by anyone but a qualified electrician.

Maintenance

There are no parts inside the equipment which require additional maintenance.

Ordering replacement parts:

Please quote the following data when ordering replacement parts:

- Type of machine
- Article number of the machine
- Identification number of the machine
- Replacement part number of the part required For our latest prices and information please go to www.isc-gmbh.info

Disposal and recycling

The equipment is supplied in packaging to prevent it from being damaged in transit. The raw materials in this packaging can be reused or recycled. The equipment and its accessories are made of various types of material, such as metal and plastic. Never place defective equipment in your household refuse. The equipment should be taken to a suitable collection center for proper disposal. If you do not know the whereabouts of such a collection point, you should ask in your local council.

Storage

Store the equipment and accessories in a dark and dry place at above freezing temperature. The ideal storage temperature is between 5 and 30 °C. Store the electric tool in its original packaging.

For EU countries only

Never place any electric power tools in your household refuse.

To comply with European Directive 2012/19/EC concerning old electric and electronic equipment and its implementation in national laws, old electric power tools have to be separated from other waste and disposed of in an environment-friendly fashion, e.g. by taking to a recycling depot.

Recycling alternative to the return request:

As an alternative to returning the equipment to the manufacturer, the owner of the electrical equipment must make sure that the equipment is properly disposed of if he no longer wants to keep the equipment. The old equipment can be returned to a suitable collection point that will dispose of the equipment in accordance with the national recycling and waste disposal regulations. This does not apply to any accessories or aids without electrical components supplied with the old equipment.

The reprinting or reproduction by any other means, in whole or in part, of documentation and papers accompanying products is permitted only with the express consent of the iSC GmbH.
Subject to technical changes

Service information

We have competent service partners in all countries named on the guarantee certificate whose contact details can also be found on the guarantee certificate. These partners will help you with all service re-quests such as repairs, spare and wearing part orders or the purchase of consumables.

Please note that the following parts of this product are subject to normal or natural wear and that the following parts are therefore also required for use as consumables.

Category	Example
Wear parts*	Carbon brushes, grinding/sanding plate
Consumables*	Grinding/sanding paper
Missing parts	

* Not necessarily included in the scope of delivery!

In the event of defects or faults, please register the problem on the internet at www.isc-gmbh.info. Please ensure that you provide a precise description of the problem and answer the following questions in all cases:

- Did the equipment work at all or was it defective from the beginning?
- Did you notice anything (symptom or defect) prior to the failure?
- What malfunction does the equipment have in your opinion (main symptom)? Describe this malfunction.

Warranty certificate

Dear Customer,

All of our products undergo strict quality checks to ensure that they reach you in perfect condition. In the unlikely event that your device develops a fault, please contact our service department at the address shown on this guarantee card. You can also contact us by telephone using the service number shown. Please note the following terms under which guarantee claims can be made:

1. These guarantee terms apply to consumers only, i.e. natural persons intending to use this product neither for their commercial activities nor for any other self-employed activities. These warranty terms regulate additional warranty services, which the manufacturer mentioned below promises to buyers of its new products in addition to their statutory rights of guarantee. Your statutory guarantee claims are not affected by this guarantee. Our guarantee is free of charge to you.
2. The warranty services cover only defects due to material or manufacturing faults on a product which you have bought from the manufacturer mentioned below and are limited to either the rectification of said defects on the product or the replacement of the product, whichever we prefer.

Please note that our devices are not designed for use in commercial, trade or professional applications. A guarantee contract will not be created if the device has been used by commercial, trade or industrial business or has been exposed to similar stresses during the guarantee period.

3. The following are not covered by our guarantee:

1. Damage to the device caused by a failure to follow the assembly instructions or due to incorrect

installation, a failure to follow the operating instructions (for example connecting it to an incorrect mains voltage or current type) or a failure to follow the maintenance and safety instructions or by exposing the device to abnormal environmental conditions or by lack of care and maintenance.

2. Damage to the device caused by abuse or incorrect use (for example overloading the device or the use of unapproved tools or accessories), ingress of foreign bodies into the device (such as sand, stones or dust, transport damage), the use of force or damage caused by external forces (for example by dropping it).
3. Damage to the device or parts of the device caused by normal or natural wear or tear or by normal use of the device.
4. The guarantee is valid for a period of 24 months starting from the purchase date of the device. Guarantee claims should be submitted before the end of the guarantee period within two weeks of the defect being noticed. No guarantee claims will be accepted after the end of the guarantee period. The original guarantee period remains applicable to the device even if repairs are carried out or parts are replaced. In such cases, the work performed or parts fitted will not result in an extension of the guarantee period, and no new guarantee will become active for the work performed or parts fitted. This also applies if an on-site service is used.
5. To make a claim under the guarantee, please register the defective device at: www.isc-gmbh.info. Please keep your bill of purchase or other proof of purchase for the new device. Devices that are returned without proof of purchase or without a rating plate shall not be covered by the guarantee, because appropriate identification will not be possible. If the defect is covered by our guarantee, then the item in question will either be repaired immediately and returned to you or we will send you a new replacement.

Of course, we are also happy to offer a chargeable repair service for any defects which are not covered by the scope of this guarantee or for units which are no longer covered. To take advantage of this service, please send the device to our service address.

Also refer to the restrictions of this warranty concerning wear parts, consumables and missing parts as set out in the service information in these operating instructions.

Explains the following conformity according to EU directives and norms for the following product

Schwingschleifer TC-OS 1520/1 (Einhell)

2014/29/EU

2005/32/EC_2009/125/EC

2014/35/EU

2006/28/EC

X 2014/30/EU

2014/32/EU

2014/53/EC

2014/68/EU

90/396/EC_2009/142/EC

89/686/EC_96/58/EC

X 2011/65/EU

2006/42/EC

Annex IV

Notified Body:

Notified Body No.:

Reg. No.:

2000/14/EC_2005/88/EC

Annex V

Annex VI


Noise: measured LWA = dB (A); guaranteed LWA = dB (A)

P = KW; L/Ø = cm

Notified Body:
2012/46/EU
Emission No.:
Standard references: EN 60745-1; EN 60745-2-4;
EN 55014-1; EN 55014-2; EN 61000-3-2; EN 61000-3-3
Landau/Isar, den 09.06.2017
First CE: 17 Archive-File/Record: NAPR014093
Art.-No.: 44.606.42 I.-No.: 11016 Documents registrar: Riedel Georg
Subject to change without notice Wiesenweg 22, D-94405 Landau/Isar

www.sidirika-nikolaidi.gr

Documents / Resources

	<p>Einhell TC-OS 1520/1 Orbital Sander [pdf] Instruction Manual TC-OS 1520-1, 4460642, TC-OS 1520 1 Orbital Sander, TC-OS 1520 1, Orbital Sander, Sander</p>
---	--

References

- [ISC iSC GmbH Spareparts for Tools and Gardenequipment](#)
- [ISC iSC GmbH Spareparts for Tools and Gardenequipment](#)