



Einhell TC-CT 3, 6 Li Cordless Stapler Instruction Manual

[Home](#) » [Einhell](#) » Einhell TC-CT 3, 6 Li Cordless Stapler Instruction Manual 



TC-CT 3, 6 Li Cordless Stapler
Instruction Manual

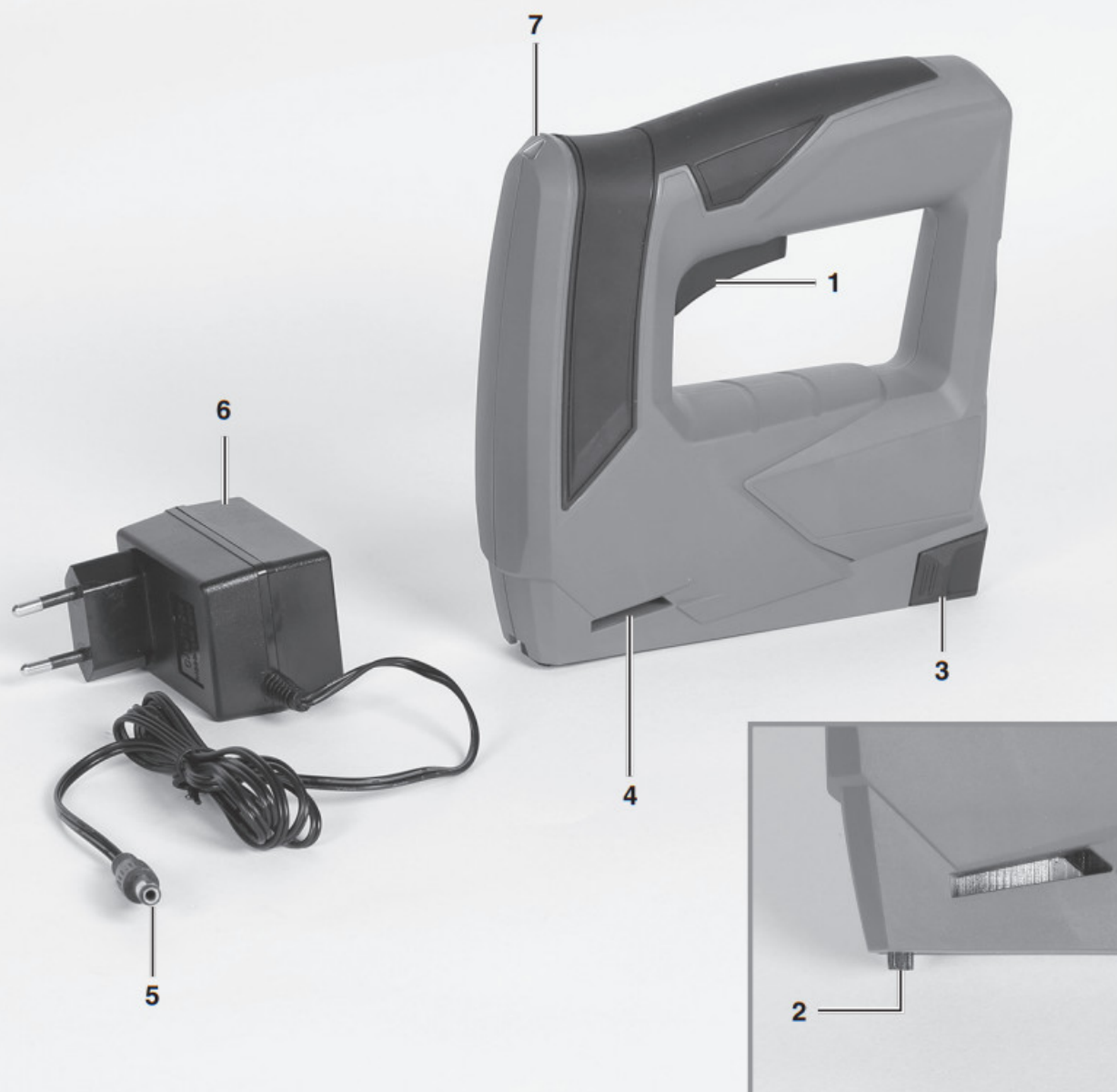


Contents

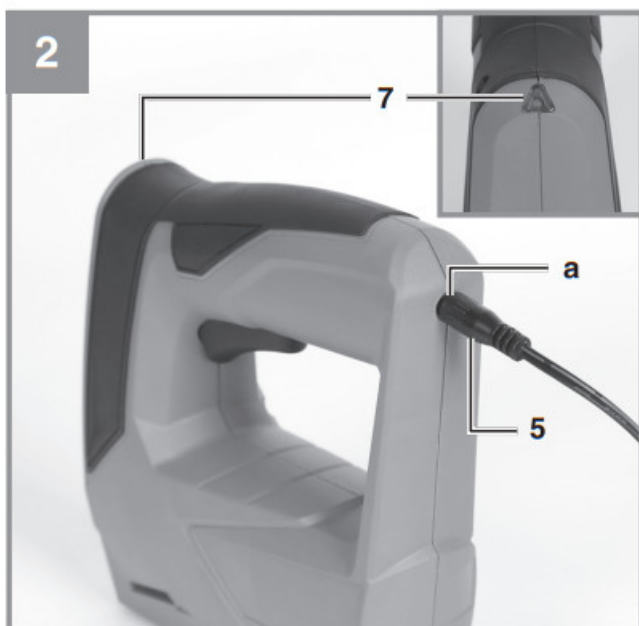
- [1 TC-CT 3, 6 Li Cordless Stapler](#)
- [2 Safety regulations](#)
- [3 Layout and items supplied](#)
- [4 Proper use](#)
- [5 Technical data](#)
- [6 Before starting the equipment](#)
- [7 Operation](#)
- [8 Cleaning, maintenance and ordering of spare parts](#)
- [9 Disposal and recycling](#)
- [10 Storage](#)
- [11 Service information](#)
- [12 Warranty certificate](#)
- [13 Documents / Resources](#)
 - [13.1 References](#)
- [14 Related Posts](#)

TC-CT 3, 6 Li Cordless Stapler

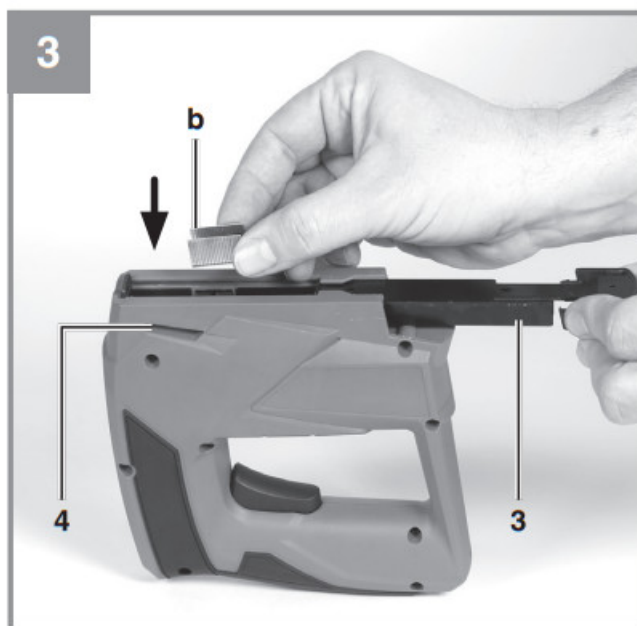
1









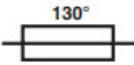
2



3



Danger! – Read the operating instructions to reduce the risk of injury

	Danger! – Read the operating instructions to reduce the risk of injury
	Caution! Wear ear-muffs. The impact of noise can cause damage to hearing.
	Caution! Wear safety goggles. Sparks generated during working or splinters, chips and dust emitted by the device can cause loss of sight.
	For use in dry rooms only
	Safety class II
	Output connector of the charging unit (direct current): The outer part of the connector is the negative pole and the inner part is the positive pole.
	If the temperature of the charging unit rises above 130 °C, the overtemperature cut-out will be activated. The supply of current to the output is then interrupted.

Danger!

When using the equipment, a few safety precautions must be observed to avoid injuries and damage. Please read the complete operating instructions and safety regulations with due care. Keep this manual in a safe place, so that the information is available at all times. If you give the equipment to any other person, hand over these operating instructions and safety regulations as well. We cannot accept any liability for damage or accidents which arise due to a failure to follow these instructions and the safety instructions.

Safety regulations

The corresponding safety information can be found in the enclosed booklet.

Danger!

Read all safety regulations and instructions. Any errors made in following the safety regulations and instructions may result in an electric shock, fire and/or serious injury. Keep all safety regulations and instructions in a safe place for future use.

Layout and items supplied

2.1 Layout (Fig. 1)

1. Trigger
2. Head of the stapler
3. Magazine slide
4. Level indicator
5. Charging cable

6. Charging unit
7. Display

2.2 Items supplied

Please check that the article is complete as specified in the scope of delivery. If parts are missing, please contact our service center or the sales outlet where you made your purchase at the latest within 5 working days after purchasing the product and upon presentation of a valid bill of purchase. Also, refer to the warranty table in the service information at the end of the operating instructions.

- Open the packaging and take out the equipment with care.
- Remove the packaging material and any packaging and/or transportation braces (if available).
- Check to see if all items are supplied.
- Inspect the equipment and accessories for transport damage.
- If possible, please keep the packaging until the end of the guarantee period.

Danger!

The equipment and packaging material are not toys. Do not let children play with plastic bags, foils or small parts. There is a danger of swallowing or suffocating!

- Cordless stapler
- Charger
- Original operating instructions
- Safety instructions

Proper use

The cordless stapler is designed for stapling and fastening textiles, leather and wood with the appropriate staples. The cordless stapler is designed for temporary operation. If operated continuously, the stapler will become hot and the increasing heat will reduce its performance. When hot, interrupt your work and allow the cordless stapler to cool.

The equipment is to be used only for its prescribed purpose.

Any other use is deemed to be a case of misuse.

The user /operator and not the manufacturer will be liable for any damage or injuries of any kind caused as a result of this.

Please note that our equipment has not been designed for use in commercial, trade or industrial applications. Our warranty will be voided if the machine is used in commercial, trade or industrial businesses or for equivalent purposes.

Technical data

Motor power supply: 3.6 V DC
Maximum number of operations per minute: 30
Staple width: 11.4 mm
Staple length: 6-14 mm
Staple thickness: 0.75 mm
Battery capacity: 1.5 Ah
Battery type: Li-Ion
Weight: 0.9 kg

Charger for TC-CT 3.6 Li

Battery charge voltage: 5 V DC

Battery charge current: 400 mA
Charging unit supply voltage: ...230-240V ~ 50 Hz
Charging time:3 – 5 hours

Hazard!

Sound and vibration

Sound and vibration values were measured in accordance with EN 60745-1 and EN 60745-2-16.

LpA sound pressure level 95,5 dB(A)
KpA uncertainty 3 dB
LWA sound power level 106,5 dB(A)
KWA uncertainty 3 dB

Wear ear-muff s.

The impact of noise can cause damage to hearing.

Total vibration values (vector sum of three directions)

were determined in accordance with EN

60745-1 and EN

60745-2-16.

Vibration emission value $a_h = 6.675 \text{ m/s}^2$

K uncertainty = 1.5 m/s^2

The specified vibration value was established in accordance with a standardized testing method. It may change according to how the electric equipment is used and may exceed the specified value in exceptional circumstances.

The specified vibration value can be used to compare the equipment with other electric power tools.

The specified vibration value can be used for initial assessment of a harmful effect.

Keep the noise emissions and vibrations to a minimum.

- Only use appliances which are in perfect working order.
- Service and clean the appliance regularly.
- Adapt your working style to suit the appliance.
- Do not overload the appliance.
- Have the appliance serviced whenever necessary.
- Switch the appliance off when it is not in use.
- Wear protective gloves.

Caution!

Residual risks

Even if you use this electric power tool in accordance with instructions, certain residual risks cannot be ruled out.

The following hazards may arise in connection with the equipment's construction and layout:

1. Lung damage if no suitable protective dust mask is used.
2. Damage to hearing if no suitable ear protection is used.
3. Health damage caused by hand-arm vibrations if the equipment is used over a prolonged period or is not properly guided and maintained.

Before starting the equipment

Hazard! Charge the battery only with the charging unit supplied.

5.1 Charging the battery (Fig. 2)

The battery is protected from exhaustive discharge. An integrated protective circuit automatically switches off the equipment when the battery is flat.

Note! Do not actuate the On/Off switch any more if the protective circuit has tripped. This may damage the battery.

Check that your mains voltage is the same as that marked on the rating plate. Plug the battery charger (6) in the plug socket and connect the charging cable (5) to the charging connection (a). The charging process starts as soon as the charging cable is connected to the charging adapter.

The red LED on the indicator (7) indicates that the battery is being charged. When the charging has finished, the red LED will go out and the green LED will begin to shine. If the indicator (7) flashes red and green alternately, this means that the temperature is too low or high. Keep the tool at room temperature for a day and try again. If the indicator (7) continues to flash red and green alternately, the battery is defective. A defective battery is not allowed to be used any more.

If only the red LED flashes, the adapted charging function is active. Reason: Exhaustive discharge.

For safety reasons the charging is performed less quickly until the normal charge has been reached.

Note! The handle may become a little warm during the charging process.

This is normal.

If the battery fails to charge, please check

- whether there is voltage at the socket outlet
- whether there is good contact at the charging contacts of the charging unit

If the battery still fails to charge, send

- the charging unit
- and the battery pack to our customer service center.

5.2 Inserting the staples (Fig. 3)

- Press the magazine slide (3) together using your thumb and index finger.
- Pull the magazine slide toward the rear of the cordless stapler and out.
- Fill the magazine with staples (b) as shown in Fig. 3.
- Then push the magazine slide back in until it snaps noticeably into place.

Note!

It must be possible to move the magazine slide without applying much force. Watch out for jammed staples.

Filling level indicator

The filling level indicator (4) shows you if there are still enough staples in the magazine. If necessary, refill the magazine as described above.

Avoid operating the trigger (1) if there are no staples or nails in the magazine.

Operation

6.1 Operation (Fig. 3)

Before starting your work, always check the filling level indicator (4) to see if the magazine contains staples and is properly closed with the magazine slide (3).

6.2 Triggering (Fig. 1)

The built-in trigger locks prevent the cordless stapler from being triggered accidentally.

Triggering is only possible by pressing the head (2) of the cordless stapler against the material and operating the trigger (1).

6.3 Indicator (Fig. 2/Item 7)

The indicator (7) indicates the battery charge level during charging (see section 5.1). In addition, the green LED shines while the staples are being stapled.

If the LED flashes red during operation, the battery is empty.

Charge the battery.

Cleaning, maintenance and ordering of spare parts

Hazard!

Never touch the head of the stapler while carrying out cleaning and maintenance work.

7.1 Cleaning

- Keep all safety devices, air vents and the motor housing free of dirt and dust as far as possible. Wipe the equipment with a clean cloth or blow it with compressed air at low pressure.
- We recommend that you clean the device immediately each time you have finished using it.
- Clean the equipment regularly with a moist cloth and some soft soap. Do not use cleaning agents or solvents; these could attack the plastic parts of the equipment.

Ensure that no

water can seep into the device.

The ingress of water into an electric tool increases the risk of an electric shock.

7.2 Maintenance

There is a risk of staples becoming jammed particularly when the cordless stapler is held at any angle when operated.

To remove them, pull the magazine slide (3) toward the rear of the cordless stapler and out, and carefully remove the jammed staples using suitable pliers. Push the magazine slide (3) back in until it stops and snaps noticeably into place.

There are no other parts inside the equipment which require maintenance.

7.3 Ordering replacement parts:

Please quote the following data when ordering replacement parts:

- Type of machine
- Article number of the machine
- Identification number of the machine
- Replacement part number of the part required For our latest prices and information please go to www.Einhell-Service.com

Disposal and recycling

The equipment is supplied in packaging to prevent it from being damaged in transit. The raw materials in this packaging can be reused or recycled. The equipment and its accessories are made of various types of material, such as metal and plastic. Never place defective equipment in your household refuse. The equipment should be taken to a suitable collection center for proper disposal. If you do not know the whereabouts of such a collection point, you should ask in your local council offices.

Storage

Store the equipment and accessories in a dark and dry place at above freezing temperature. The ideal storage temperature is between 5 and 30 °C. Store the electric tool in its original packaging.

For EU countries only

Never place any electric power tools in your household refuse.

To comply with European Directive 2012/19/EC concerning old electric and electronic equipment and its implementation in national laws, old electric power tools have to be separated from other waste and disposed of

in an environment-friendly fashion, e.g. by taking to a recycling depot.

Recycling alternative to the return request:

As an alternative to returning the equipment to the manufacturer, the owner of the electrical equipment must make sure that the equipment is properly disposed of if he no longer wants to keep the equipment.

The old equipment can be returned to a suitable collection point that will dispose of the equipment in accordance with the national recycling and waste disposal regulations. This does not apply to any accessories or aids without electrical components supplied with the old equipment.

Please note that batteries and lamps (e.g. light bulbs) must be removed from the tool before it is disposed of.

The reprinting or reproduction by any other means, in whole or in part, of documentation and papers accompanying products is permitted only with the express consent of the Einhell Germany AG.

Subject to technical changes

This consignment contains lithium-ion batteries.

In accordance with special provision 188 this consignment is not subject to the ADR regulations. Handle with care.

Danger of ignition in case of damage to the consignment package. If the consignment package is damaged:

Check and if necessary repackage.

For further information contact: 0049 9951 95920-66. Outside

Germany charges will apply instead for a regular call to a landline number in Germany.

Service information

We have competent service partners in all countries named on the guarantee certificate whose contact details can also be found on the guarantee certificate. These partners will help you with all service requests such as repairs, spare and wearing part orders or the purchase of consumables.

Please note that the following parts of this product are subject to normal or natural wear and that the following parts are therefore also required for use as consumables.

Category	Example
Wear parts*	
Consumables*	Staples
Missing parts	

* Not necessarily included in the scope of delivery!

In the event of defects or faults, please register the problem on the internet at www.Einhell-Service.com.

Please ensure that you provide a precise description of the problem and answer the following questions in all cases:

- Did the equipment work at all or was it defective from the beginning?
- Did you notice anything (symptom or defect) prior to the failure?
- What malfunction does the equipment have in your opinion (main symptom)?

Describe this malfunction.

Warranty certificate

Dear Customer,

All of our products undergo strict quality checks to ensure that they reach you in perfect condition. In the unlikely event that your device develops a fault, please contact our service department at the address shown on this guarantee card. You can also contact us by telephone using the service number shown. Please note the following terms under which guarantee claims can be made:

1. These guarantee terms apply to consumers only, i.e. natural persons intending to use this product neither for

their commercial activities nor for any other self-employed activities. These warranty terms regulate additional warranty services, which the manufacturer mentioned below promises to buyers of its new products in addition to their statutory rights of guarantee. Your statutory guarantee claims are not affected by this guarantee. Our guarantee is free of charge to you.

2. The warranty services cover only defects due to material or manufacturing faults on a product which you have bought from the manufacturer mentioned below and are limited to either the rectification of said defects on the product or the replacement of the product, whichever we prefer. Please note that our devices are not designed for use in commercial, trade or professional applications. A guarantee contract will not be created if the device has been used by commercial, trade or industrial business or has been exposed to similar stresses during the guarantee period.
3. The following are not covered by our guarantee: – Damage to the device caused by a failure to follow the assembly instructions or due to incorrect installation, a failure to follow the operating instructions (for example connecting it to an incorrect mains voltage or current type) or a failure to follow the maintenance and safety instructions or by exposing the device to abnormal environmental conditions or by lack of care and maintenance.
– Damage to the device caused by abuse or incorrect use (for example overloading the device or the use of unapproved tools or accessories), ingress of foreign bodies into the device (such as sand, stones or dust, transport damage), the use of force or damage caused by external forces (for example by dropping it). – Damage to the device or parts of the device caused by normal or natural wear or tear or by normal use of the device.
4. The guarantee is valid for a period of 24 months starting from the purchase date of the device. Guarantee claims should be submitted before the end of the guarantee period within two weeks of the defect being noticed. No guarantee claims will be accepted after the end of the guarantee period. The original guarantee period remains applicable to the device even if repairs are carried out or parts are replaced. In such cases, the work performed or parts fitted will not result in an extension of the guarantee period, and no new guarantee will become active for the work performed or parts fitted. This also applies if an on-site service is used.
5. To make a claim under the guarantee, please register the defective device at: www.Einhell-Service.com. Please keep your bill of purchase or other proof of purchase for the new device. Devices that are returned without proof of purchase or without a rating plate shall not be covered by the guarantee, because appropriate identification will not be possible. If the defect is covered by our guarantee, then the item in question will either be repaired immediately and returned to you or we will send you a new replacement.

Of course, we are also happy to offer a chargeable repair service for any defects which are not covered by the scope of this guarantee or for units which are no longer covered. To take advantage of this service, please send the device to our service address.

Also refer to the restrictions of this warranty concerning wear parts, consumables and missing parts as set out in the service information in these operating instructions.

UK CA Declaration of conformity

We, Einhell UK Ltd

Champions Business Park, First Floor Unit 10, Arrowe Brook Rd, Upton, Wirral CH49 0AB,
United Kingdom

declare the conformity to UK standards and legislation was assessed for:

Cordless Tacker TC-CT 3,6 Li (Einhell)

UK legislation

- | | |
|--|--|
| <input type="checkbox"/> Simple Pressure Vessels (Safety) Regulation | <input checked="" type="checkbox"/> Electromagnetic Compatibility Regulation |
| <input type="checkbox"/> Electrical Equipment (Safety) Regulation | <input type="checkbox"/> Measuring Instruments Regulation |
| <input type="checkbox"/> Radio Equipment Regulation | <input type="checkbox"/> Pressure Equipment (Safety) Regulation |
| <input type="checkbox"/> Personal Protective Equipment Regulation | |
| <input type="checkbox"/> The Ecodesign for Energy-Related Products and Energy Information Regulation | |
| <input checked="" type="checkbox"/> The Restriction of the Use of Certain Hazardous Substances in Electrical and Electronic Equipment Regulation | |
| <input type="checkbox"/> Noise Emission in the Environment by Equipment for use Outdoors Regulation | |
| <input type="checkbox"/> Annex V | |
| <input type="checkbox"/> Annex VI | |
| Noise: measured L_{WA} = dB (A); guaranteed L_{WA} = dB (A) | |
| P = kW; L/Ø = cm | |
| UK Approved Body: | |
| <input checked="" type="checkbox"/> Supply of Machinery (Safety) Regulation | |
| <input type="checkbox"/> Annex IV | |
| UK Approved Body: | |
| UKTE Certificate No.: | |

Standards: BS 60745-1; BS 60745-2-16; BS 55014-1; BS 55014-2;
BS 61000-3-2; BS 61000-3-3


Wirral, 2022.02.10


Tom Chambers, Managing Director Einhell UK Ltd.

Article Number: 42.578.80 I-No.: 21031
Subject to change without notice

Archive-File/Record: NAPR026350
Documents registrar: GEorg Riedel
Wieserweg 22, 94405 Landau/Isar, Germany

Documents / Resources

	<p>Einhell TC-CT 3, 6 Li Cordless Stapler [pdf] Instruction Manual</p> <p>TC-CT 3 6 Li Cordless Stapler, TC-CT 3 Li Cordless Stapler, TC-CT 6 Li Cordless Stapler, Cordless Stapler, Stapler, TC-CT</p>
---	---

References

-  [Einhell Service](#)

-  [Einhell Service](#)

Manuals+.