



# Einhell SPK13 Aluminium Guide Rail Instruction Manual

[Home](#) » [Einhell](#) » Einhell SPK13 Aluminium Guide Rail Instruction Manual 

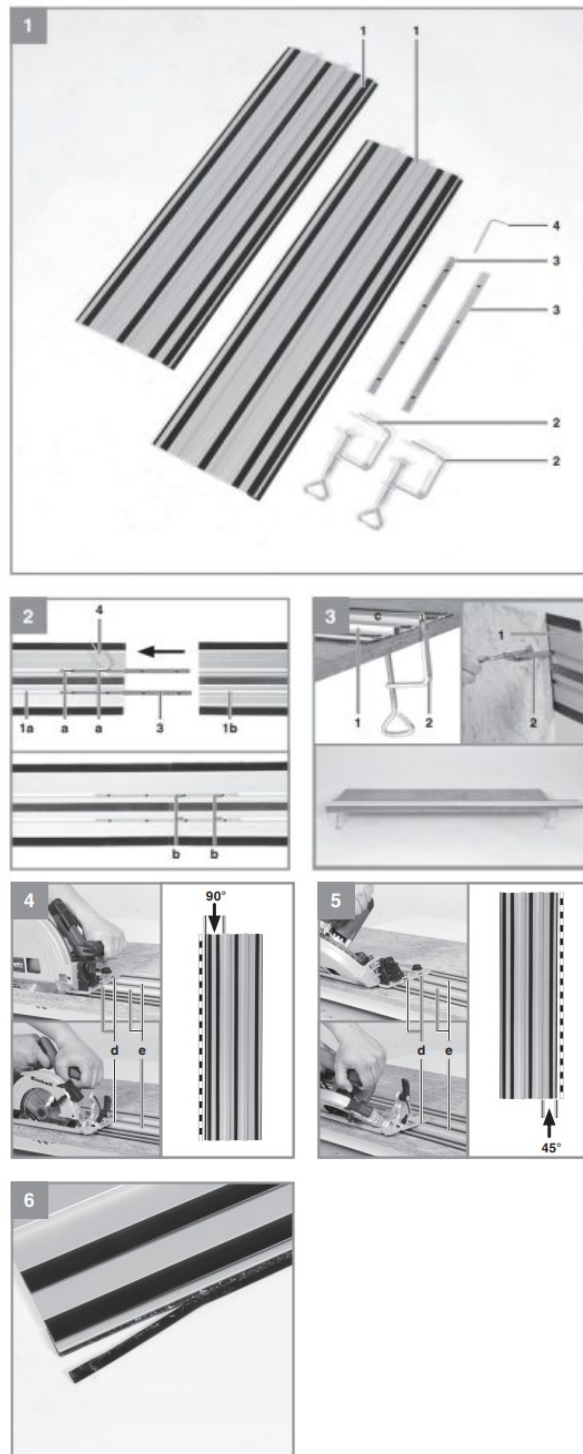


## SPK13 Aluminium Guide Rail Instruction Manual

### Contents

- [1 SPK13 Aluminium Guide Rail](#)
- [2 Safety information](#)
- [3 Layout and items supplied](#)
- [4 Use](#)
- [5 Cleaning and ordering spare parts](#)
- [6 Documents / Resources](#)
  - [6.1 References](#)

## SPK13 Aluminium Guide Rail



**Danger!** – Read the operating instructions to reduce the risk of injury



**Caution!** Wear ear-muffs. The impact of noise can cause damage to hearing.



**Caution!** Wear a breathing mask. Dust which is injurious to health can be generated when working on wood and other materials. Never use the device to work on any materials containing asbestos!



**Caution!** Wear safety goggles. Sparks generated during working or splinters, chips and dust emitted by the device can cause loss of sight.

### **Danger!**

When using the guide rail system, a few safety precautions must be observed to avoid injuries and damage. Please read the complete operating manual with due care. Keep these operating instructions in a safe place so that the information is available at all times. If you give the guide rail system to any other persons, give them these operating instructions as well. We can accept no liability for damage or accidents which arise due to non-compliance with these instructions.

## Safety information

Read all the instructions for the guide rail system and all the instructions and safety information for the plunge/hand-held circular saw!

Failure to comply with the instructions for the guide rail system and the instructions and safety information for the plunge/hand-held circular saw may result in an electric shock, fire and/or serious injury.

Keep all the instructions and safety information in a safe place for future use.

## Layout and items supplied

### 2.1 Layout (Fig. 1)

1. Guide rail (2x)
2. Screw clamp (2x)
3. Connecting piece
4. Hexagon key

### 2.2 Items supplied

- Open the packaging and take out the guide rail system with care.
- Remove the packaging material and any packaging and/or transportation braces (if present).
- Check to see if all the items are supplied.
- Inspect the guide rail system and the accessories for transport damage.
- If possible, keep the packaging until the end of the guarantee period.

### Danger!

The guide rail and packaging material are not toys! Do not let children play with plastic bags, foils or small parts! There is a risk of choking and suffocating!

## Use

The guide rail system enables exact and straight cuts to be made. It can be used for 0°/90° cuts and for 45° cuts.

### Assembly (Fig. 2)

To assemble the 2 guide rails, proceed as follows.

- Push the connecting pieces (3) half-way into the bottom side of the guide rail (1a). Make sure that the heads of the hex screws (a+b) are visible.
- Tighten the 4 socket head screws (a) using the hexagon key (4).
- Now slide the other guide rail (1b) onto the projecting half of the connecting pieces (3) until both rails are in contact with each other.
- Now tighten the 4 socket head screws (b) using the hexagon key (4).
- Check whether the two rails are now securely joined together by pulling on them.
- To dismantle, proceed in reverse order. The two guide rails can also be used separately on their own.

### 5. Fastening (Fig. 3)

Fasten the guide rail system (1) to the workpiece with the screw clamps (2). This is to prevent the rail from slipping. Proceed as follows:

- Place the rail on the workpiece.
- Fit the screw clamps (2) into the guide (c) on the guide rail system (1).
- Tighten the screw clamps.

If the rail is longer than the workpiece, you can also slide the screw clamp as far as the workpiece underneath the rail and then fasten it.

For an optimum hold, fasten the guide rail system on both sides.

#### **Working with the guide rail system (Fig. 4-6)**

##### **Danger!**

Before working with the guide rail system, please also read the operating instructions and safety information issued for the plunge/ hand-held circular saw.

##### **Important!**

When the first cut is made, a piece of the rubber lip at the edge of the guide rail will be cut off (see Fig. 6). This ensures that the rubber lip rests exactly against the saw blade. Therefore, use a waste piece for this first cut. The rubber lip can be replaced with a new one when necessary (due to wear, damage, use of a different saw, etc.) (see 7.2).

1. Mark up your workpiece.
2. Position the guide rail (1) so that the edge of the guide rail (1) rests against the marker line on the workpiece.

##### **Important!**

The correct side of the rail must be placed against the marker line according to the type of cut (0°/90° or 45°) to be performed: 0° and 90° cuts

The broad side must be placed against the line, see Fig. 4 45° cuts

The narrow side must be placed against the line, see Fig. 5

3. Fasten the guide rail system as described in section 5 "Fastening".
4. Adjust the saw as required and place it on the guide rail system (1).
5. Make sure that the recess (d) in the saw table fits on the elevation (e) in the guide rail system.
6. Switch on your circular saw and move it evenly with little force along the guide rail system.

##### **Important!**

Do not let your saw stand stationary on the projecting guide rail system. This could cause damage to the rail.

##### **Important!**

When you use the guide rail system, remember that the device is now higher by the amount of the guide rail system (6 mm) and that the scale for the sawing depth on the device can no longer be used on a 1:1 basis. For the hand-held circular saws in this case, set the required cutting depth 6 mm higher. Example: Required cutting depth 30 mm →

Setting if the guide rail system is used 36 mm For the TE-PS 165 plunge saw, use mark "B" for the depth setting. To do so, please read the instructions for the plunge saw.

##### **Important!**

When you use the guide rail system, the sawing line mark for 45° cuts in the saw foot on the device no longer corresponds with the cut. This is now slightly off set, because the device is higher by the amount of the guide rail system.

## **Cleaning and ordering spare parts**

### **7.1 Cleaning**

We recommend that you clean the guide rail and its accessories immediately after use. Clean the guide rail with a damp cloth and some soft soap.

Do not use cleaning agents or solvents; these may be aggressive to the plastic.

### **7.2 Ordering replacement parts:**

Please quote the following data when ordering replacement parts:

- Type of machine
- Article number of the machine
- Identification number of the machine
- Replacement part number of the part required

For our latest prices and information please go to [www.Einhell-Service.com](http://www.Einhell-Service.com) Rubber lip (Art. No.: 450211801800)

### Disposal and recycling

The guide rail is supplied in packaging to prevent it from being damaged in transit. The raw materials in this packaging can be reused or recycled.

Defective components of the guide rail must be disposed of as special waste. Ask your dealer or your local council!

The reprinting or reproduction by any other means, in whole or in part, of documentation and papers accompanying products is permitted only with the express consent of the Einhell Germany AG.

Subject to technical changes



## Documents / Resources

	<p><a href="#">Einhell SPK13 Aluminium Guide Rail</a> [pdf] Instruction Manual 4502118, 11017, SPK13 Aluminium Guide Rail, SPK13, Aluminium Guide Rail, Guide Rail</p>
--	--

## References

-  [Einhell Service](#)
- [User Manual](#)

[Manuals+](#), [Privacy Policy](#)

This website is an independent publication and is neither affiliated with nor endorsed by any of the trademark owners. The "Bluetooth®" word mark and logos are registered trademarks owned by Bluetooth SIG, Inc. The "Wi-Fi®" word mark and logos are registered trademarks owned by the Wi-Fi Alliance. Any use of these marks on this website does not imply any affiliation with or endorsement.