



Einfeben B09BRHPWTH Lockable Window Handle Set Instruction Manual

[Home](#) » [Einfeben](#) » Einfeben B09BRHPWTH Lockable Window Handle Set Instruction Manual 

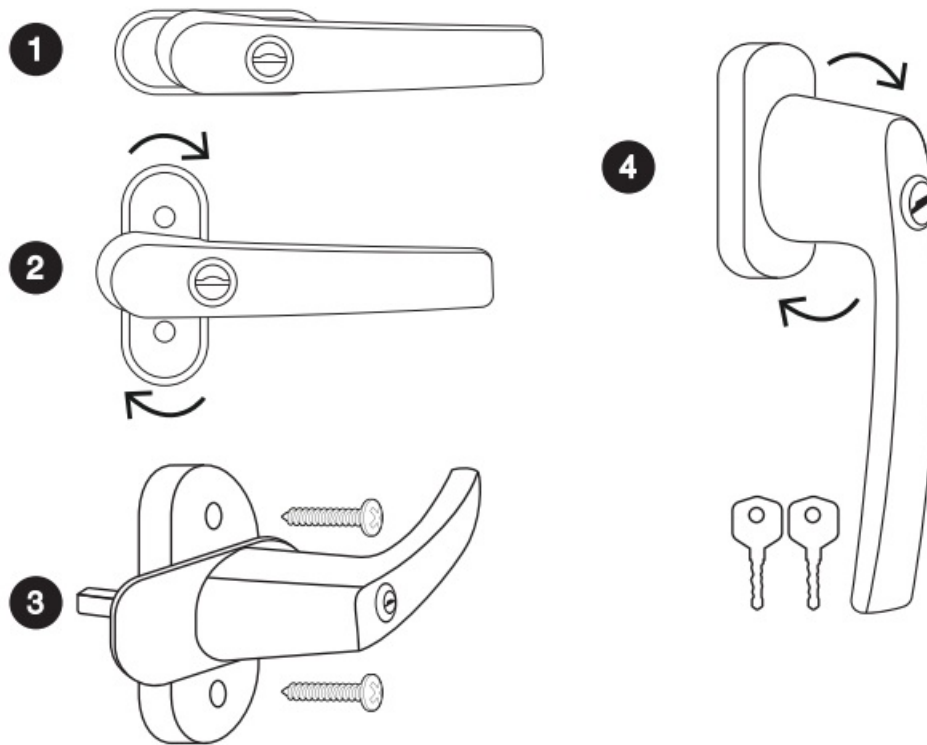


Manual
Lockable Window
Handle Set

Contents

- [1 B09BRHPWTH Lockable Window Handle Set](#)
- [2 Product care](#)
- [3 Documents / Resources](#)
 - [3.1 References](#)
- [4 Related Posts](#)

B09BRHPWTH Lockable Window Handle Set



The window handle set consists of four handles, and every handle comes with two keys for locking. The set is designed to provide increased security for your windows.

1. Align the handle horizontally.
2. Slightly lift the cover of the fixing holes and turn it by 90.
3. Tighten the screws with a screwdriver. Make sure that the handle is straight and tight on the window.
4. Test the handle to make sure it works properly and closes the window securely.

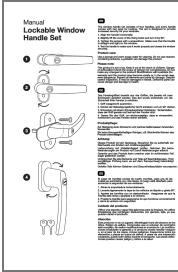
Product care

Use a sponge and warm soapy water for cleaning. Do not use cleaners containing solvents, e.g.bleach can damage the product.

Please note:

This product is not a toy. Keep it out of the reach of children. Danger of suffocation! Check the scope of delivery for completeness. Do not make any changes to the product! Modifications will invalidate the warranty and the product may become unsafe or, in the worst case, even dangerous. Inspect all elements and parts for damage. Despite careful inspection, it may be damaged in transit. Defective parts can cause danger and damage to health.

PRODUCED FOR:
Niboline GmbH
S~dstr. 6, 16356 Werneuchen



[Einfaben B09BRHPWTH Lockable Window Handle Set](#) [pdf] Instruction Manual
B09BRHPWTH Lockable Window Handle Set, B09BRHPWTH, Lockable Window Handle Set, Window Handle Set, Handle Set, Set

References

- [User Manual](#)