

**EG4**  
12kPV LCD Update Via  
USB Flash Drive



# EG4 12kPV LCD Update Via USB Flash Drive User Guide

[Home](#) » [Eg4](#) » EG4 12kPV LCD Update Via USB Flash Drive User Guide 

## Contents

- 1 [EG4 12kPV LCD Update Via USB Flash Drive](#)
- 2 [FORMATTING FLASH DRIVE:](#)
- 3 [DOWNLOADING AND UN-ZIPPING:](#)
- 4 [INSTALLING THE UPDATE:](#)
- 5 [Documents / Resources](#)
  - 5.1 [References](#)
- 6 [Related Posts](#)

# EG4

**EG4 12kPV LCD Update Via USB Flash Drive**



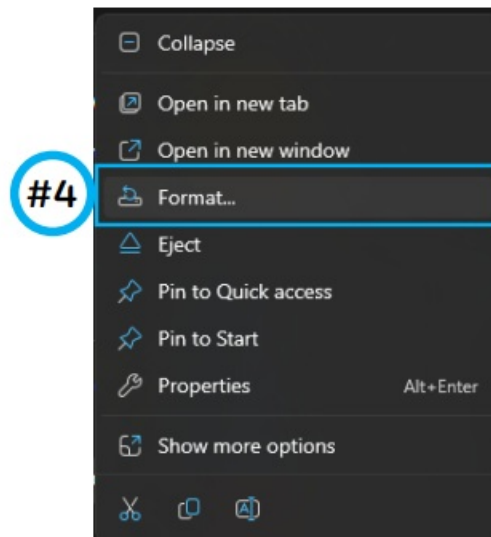
**NOTE:**

The callout numbers in the images below correlate to the steps taken.

**FORMATTING FLASH DRIVE:**

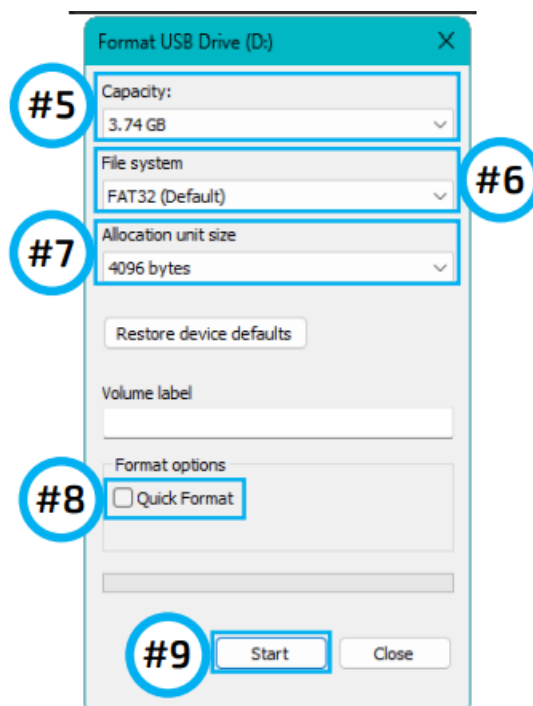
Ensure the USB flash drive is  $\leq 16\text{GB}$  for file system compatibility.

1. Plug in the USB flash drive to a Windows computer.
2. Navigate to "File Explorer".
3. Locate the USB drive location in the left side pane of File Explorer.
4. Right-click the USB drive in the left pane and select "Format".
5. The capacity should reflect the size of the USB drive automatically but if not, ensure "Capacity" is set to 2, 4, 8 or 16GB.
6. Set "File system" to FAT32.
7. Set "Allocation unit size" to 4096 bytes.
8. Deselect the "Quick Format" checkbox.
9. Select "Start".



## DOWNLOADING AND UN-ZIPPING:

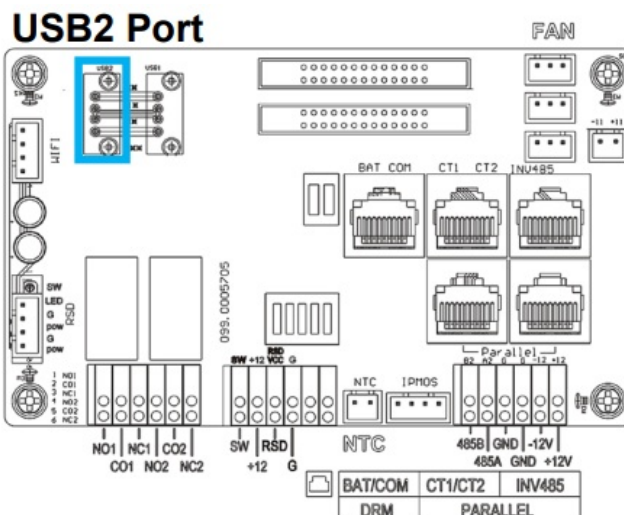
1. Navigate to the 12kPV Hybrid Inverter product page on <https://www.eg4electronics.com> and download the “12kPV LCD Version 18 Firmware” file under the Firmware tab.
2. Once downloaded, right-click and unzip the downloaded file to the desktop.
3. Once unzipped, open the folder located on the desktop.
4. Select the “DWIN\_SET” folder and copy it.
5. Navigate to the USB drive through the File Explorer.
6. Paste the “DWIN\_SET” folder to the USB drive.
7. Safely remove the USB drive.



## INSTALLING THE UPDATE:

1. Power off the inverter and plug the flash drive into the USB2 port on the communications board.
2. Power on the inverter. The update should begin automatically.  
The unit will display the start-up screen for several minutes while applying the update.

3. After several minutes (~3), the screen will restart itself and will then point to the standard home screen.
4. Remove the USB flash drive from the communications board.



### NOTE:

To ensure the update went through successfully, the user can check the LCD version number in the lower right-hand corner of the physical display

## Documents / Resources

	<p><a href="#">EG4 12kPV LCD Update Via USB Flash Drive</a> [pdf] User Guide</p> <p>12kPV LCD Update Via USB Flash Drive, LCD Update Via USB Flash Drive, Update Via USB Flash Drive, Via USB Flash Drive, USB Flash Drive, Flash Drive, Drive</p>
--	--

## References

-  [Power More with EG4 - EG4 Electronics](#)
- [User Manual](#)

### Manuals+. [Privacy Policy](#)

This website is an independent publication and is neither affiliated with nor endorsed by any of the trademark owners. The "Bluetooth®" word mark and logos are registered trademarks owned by Bluetooth SIG, Inc. The "Wi-Fi®" word mark and logos are registered trademarks owned by the Wi-Fi Alliance. Any use of these marks on this website does not imply any affiliation with or endorsement.