



EduTouch P Series Interactive LED Panel Instruction Manual

[Home](#) » [EduTouch](#) » EduTouch P Series Interactive LED Panel Instruction Manual 

Contents

- 1 EduTouch P Series Interactive LED Panel
- 2 Product Information
- 3 Product Usage Instructions
- 4 IMPORTANT INFORMATION
- 5 IMPORTANT SAFETY PRECAUTIONS
- 6 IDENTIFICATION OF CONTROLS
- 7 REMOTE CONTROL
- 8 GETTING STARTED
- 9 CONNECTIONS
- 10 BASIC OPERATIONS
- 11 OPERATING THE MENU
- 12 USER SETTINGS MENU LIST
- 13 USER MENU LIST
- 14 SYSTEM
- 15 OTHERS
- 16 ANNOTATION
- 17 WHITEBOARD
- 18 File Explorer
- 19 Eshare
- 20 Visualizer
- 21 TROUBLESHOOTING
- 22 SPECIFICATIONS
- 23 Declaration of RoHS2 Compliance
- 24 Documents / Resources
 - 24.1 References
- 25 Related Posts

EduTouch



Specifications

- Product: Interactive LED Panel
- Model Number: PPHH-092982816186811
- Website: www.moonkeys85sav.com

Product Information

The Interactive LED Panel is a cutting-edge display technology that offers interactive features for enhanced user engagement. It comes with various functionalities such as annotation, whiteboard, file explorer, EShare, and visualizer.

Product Usage Instructions

Important Safety Precautions

Before using the Interactive LED Panel, it is crucial to follow these safety precautions

1. Read and understand all operating instructions provided in the manual.
2. Keep the safety and operating instructions in a safe place for future reference.
3. Avoid exposure to dangerous voltages by not opening the unit.
4. Handle electricity properly to prevent personal injuries and property damage.

Getting Started

To begin using the Interactive LED Panel, follow these steps

1. Ensure the LED is positioned in a stable location to prevent any hazards.
2. Connect the LED to a power source using the appropriate cables.
3. Power on the LED using the remote control or manual controls.

Basic Operations

Once the LED is powered on, you can perform basic operations such as adjusting brightness, contrast, and volume using the remote control or onboard controls.

Operating the Menu

The menu options allow you to access various features of the Interactive LED Panel. Use the remote control to navigate through the menu and select desired functions.

Troubleshooting

If you encounter any issues with the Interactive LED Panel, refer to the troubleshooting section in the manual for solutions. Contact customer support if problems persist.

FAQ

- **Q: How do I connect external devices to the Interactive LED Panel?**

- A: You can connect external devices such as laptops, cameras, or USB drives to the panel using the available input ports. Refer to the Connections section in the manual for detailed instructions.

- **Q: Can I use the Interactive LED Panel in high-temperature environments?**

- A: It is not recommended to use the panel immediately after moving from a low temperature to high temperature environment to prevent condensation. Allow the device to acclimate before use.

Interactive LED Panel

INSTRUCTION MANUAL

Before connecting, operating or adjusting this product, please read the manual completely. Please keep this manual for future reference.

IMPORTANT INFORMATION

If the LED is not positioned in a stable location, it can be potentially hazardous due to falling. Many injuries, particularly to children, can be avoided by taking simple precautions such as

- Use cabinets or stands recommended by the manufacturer of the LED.
- Only use furniture that can safely support the LED.
- Ensure the LED is not hanging over the edge of the supporting furniture.
- Do not place the LED on tall furniture (for example, cupboards or bookcases) without anchoring both the furniture and the LED to a suitable support.
- Do not position the LED on cloth or place any material between the LED and supporting furniture.
- Increase children's awareness of danger caused by falling down of the LED, or being hurt by bumping into the LED.
- Do not use immediately after moving from a low temperature to high temperature environment, as this causes condensation, which may result in fire, electric shock, or other hazards.
- To avoid possible condensation it is recommended to not use the device within 24 hours after its arrival, to avoid possible condensation.

Warning

To prevent the spread of fire, keep candles or other open flames away from the LED at all times.

IMPORTANT SAFETY PRECAUTIONS

CAUTION

RISK OF ELECTRIC SHOCK DO NOT OPEN



This symbol indicates that dangerous voltage instituting a risk of electric shock is present within this unit.



This symbol indicates that there are important operation and maintenance instructions in the literature accompanying the appliance.

Electricity may cause personal injuries and property damage if handled improperly. The LED has been engineered and manufactured with the highest priority on safety. But **IMPROPER USE CAN RESULT IN POTENTIAL ELECTRIC SHOCK OR FIRE HAZARD**. In order to prevent potential danger, please observe the following instructions when installing, operating and cleaning the product. To ensure your safety and prolong the service life of your LED, please read the following precautions carefully before using the product.

1. **Read these instructions**—All operating instructions must be read and understood before the product is used.
2. **Keep these instructions**—These safety and operating instructions must be kept in a safe place for future reference.
3. **Note all warnings**—All warnings on the product and in the instruction manual must be observed closely.
4. **Follow all instructions**—All operating instructions must be followed.
5. **Attachments**—Only use attachments/accessories specified by the manufacturer. Do not use attachments which are not recommended by the manufacturer. Use of improper attachments can result in accidents.
6. **Power source**—This product is intended to be supplied with a listed power supply indicated on the marking label. If you are not sure of the type of power supply at your location, consult your product dealer or local power company. For added protection for this product during a lightning storm, or when it is left unattended and unused for a long period of time, unplug it from the wall outlet and disconnect the cable system.
7. **Power cord protection**—Protect the power cord from being walked on or pinched particularly at plugs, wall outlet, and the point where they exit from the device.
NOTE: Where the mains plug or an appliance coupler is used as the disconnected device, the disconnected device shall remain readily operable.
8. **Overloading**—Do not overload wall outlets, extension cords, or convenience receptacles on other equipment as this can result in a risk of fire or electric shock.
9. **Entering of objects and liquids**—Never insert an object into the product through vents or openings. High voltages are present in the product and inserting an object can cause electric shock and/or short circuit internal parts. For the same reason, do not spill water or liquid on the product.
10. **Servicing**—Refer all servicing to qualified service personnel. Servicing is required when the device has been damaged in any way, such as the power-supply cord or plug is damaged, liquid has been spilled, objects have fallen into the device, the device has been exposed to rain or moisture, does not operate normally or has been dropped.
11. **Damage requiring service**—If any of the following conditions occurs, unplug the power cord from the AC outlet and request a qualified service technician to perform repairs.

- When the power cord or plug is damaged.
 - When liquid is spilled on the product or when objects have fallen into the product.
 - When the product has been exposed to rain or water.
 - When the product does not operate properly as described in the operating instructions.
 - Do not touch the controls other than those described in the operating instructions. Improper adjustment of controls not described in the instructions can cause damage, which often requires extensive adjustment work by a qualified technician.
 - If the product has been dropped or the cabinet has been damaged in any way.
 - When the product displays an abnormal condition or exhibits a distinct change in performance. Any noticeable abnormality in the product indicates that the product needs servicing.
12. **Replacement parts**—In case the product needs replacement parts, make sure that the service person uses replacement parts specified by the manufacturer, or those with the same characteristics and performance as the original parts. Use of unauthorized parts can result in fire, electric shock and/or other danger. **Safety checks**—Upon completion of service or repair work, request the service technician to perform safety checks to ensure that the product is in proper operating condition.
13. **Wall or ceiling mounting**—When mounting the device on a wall or ceiling, be sure to install the product according to the method recommended by the manufacturer. This is a safety issue.
14. **Stand—Use** only with the trolley, stand or wall mount specified through CE/UL/GS safety certificate. or sold with the device. Do not place the product on an unstable trolley, stand. Placing the product on an unstable base can cause the product to fall, resulting in possible serious injuries as well as damage to the device.
15. **Careful move—When** a trolley is used, be cautious when moving the trolley/device combination to avoid injury from the device tipping over. Sudden stops, excessive force and uneven floor surfaces can cause the product to fall from the trolley.
- Careful move and be careful please, point of strength should not in display screen.
Never attempt to move the LED unless the AC power cord has been disconnected.
16. Do not use this device near water—for example, near a bathtub, washbowl, kitchen sink, laundry tub, in a wet basement or near a swimming pool, and the like.
- The apparatus should not be exposed to dripping or splashing liquids and that no objects filled with liquids, such as vases, shall be placed on the apparatus.
17. Do not use immediately after moving from a low temperature to high temperature environment, as this causes condensation, which may result in fire, electric shock, or other hazards.
18. Clean only with dry cloth—Unplug the device from the power before cleaning. Do not use liquid cleaners or aerosol cleaners. Use a soft cloth for cleaning.
19. **Ventilation** —Do not block any ventilation openings. Install the LED in accordance with the manufacturer instructions. Do not cover or block these vents and openings since insufficient ventilation can cause overheating and/or shorten the life of the product. This product is not designed for built-in installation; therefore do not place the product in an enclosed space such as a bookcase or rack, unless proper ventilation is provided or the manufacturer's instructions are followed.
- It should have interspace around the product and the wider it has the heat dissipation is better. Suggest up>10cm, around>10cm and back >2.5cm.
20. **Heat sources—Do** not install near any heat sources such as radiators, heat registers, stoves, or other device (including amplifiers) that produce heat.
21. **Panel protection—The** display panel used in this product is made of glass. Therefore, it can break when the

product is dropped or impacted upon by other objects. Be careful not to be injured by broken glass pieces in case the display panel breaks.

Do not use hard or sharp object to take place of special pen when write in the screen.

Wipe the screen from one side to the other carefully till it looks completely clean. Do not flailing in all directions.

22. Pixel defec

technology product, giving you fine detailed pictures. Occasionally, a few non-active pixels may appear on the screen as a fixed point of blue, green or red. Please note that this does not affect the performance of your product.

WARNING

For continued safety, device with class I construction shall be connected to a mains socket outlet with a protective earthing connection.



Environmental Protection

Waste electrical products should not be disposed of with household waste. Please recycle where facilities exist. Check with your Local Authority or retailer for recycling advice.

About Location/Environment

Do not use in hot and cold rooms (locations)

- When the unit is used in rooms (locations) with low temperature, the picture may leave trails or appear slightly delayed. This is not a malfunction. The unit will recover when the temperature returns to normal.
- Do not leave the unit in a hot or cold location. Also, do not leave the unit in a location exposed to direct sunlight to near a heater or in high humidity, as this may cause the cabinet to deform and the LED to malfunction and affect the LED's performance.

- Environment condition

Operating temperature: 5°C – 35°C

Operating humidity: 20% – 80% (no moisture condensation)

Storage temperature: -15°C – 45°C

- **Storage humidity:** 10% – 80%

Atmospheric pressure: 86 kPa ~106 kPa

About After-Image

The extended use of fixed image program material can cause a permanent after-image on the screen. This background image is viewable on normal programs in the form of a stationary fixed image. This type of irreversible screen deterioration can be limited by observing the following steps

- Reduce the brightness/contrast setting to a minimum viewing level.
- Do not display the fixed image for extended periods of time.
- Turn the power off when the display is not in actual use.

Important Information Regarding Use of Video Games, Computers, Captions or Other Fixed Image Displays. Do not allow a still picture to be displayed for an extended period of time, as this can cause a permanent after-image to remain on the screen. Examples of still pictures include logos, video games, computer images, teletext

and images displayed in 4:3 mode.

CAUTIONS

- The permanent after-image on the screen resulting from fixed image use is not an operating defect and as such is not covered by the warranty.
- This product is not designed to display fixed images for extended periods of time.
- It is not advised to put the screen in portrait mode because this will affect the warranty.

Cleaning and Maintenance

To clean this unit, wipe with a soft, dry cloth.

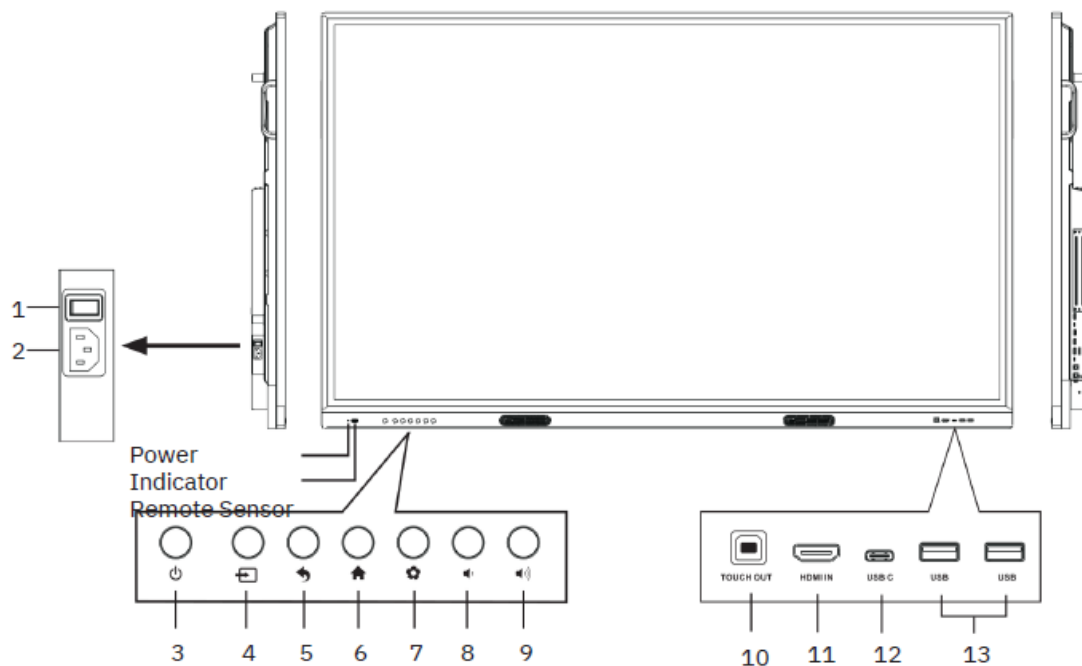
Clean the cabinet with a soft, lint-free cloth. If the cabinet is especially dirty, moisten a soft, lint-free cloth in a weak detergent Solution, squeeze the excess moisture from the cloth, then wipe the cabinet with the cloth. Use a clean cloth to dry the cabinet.








- Use eyeglass cleaner to remove stubborn dirt from the LED.
- Never use alcohol, paint thinner or benzene to clean this device.

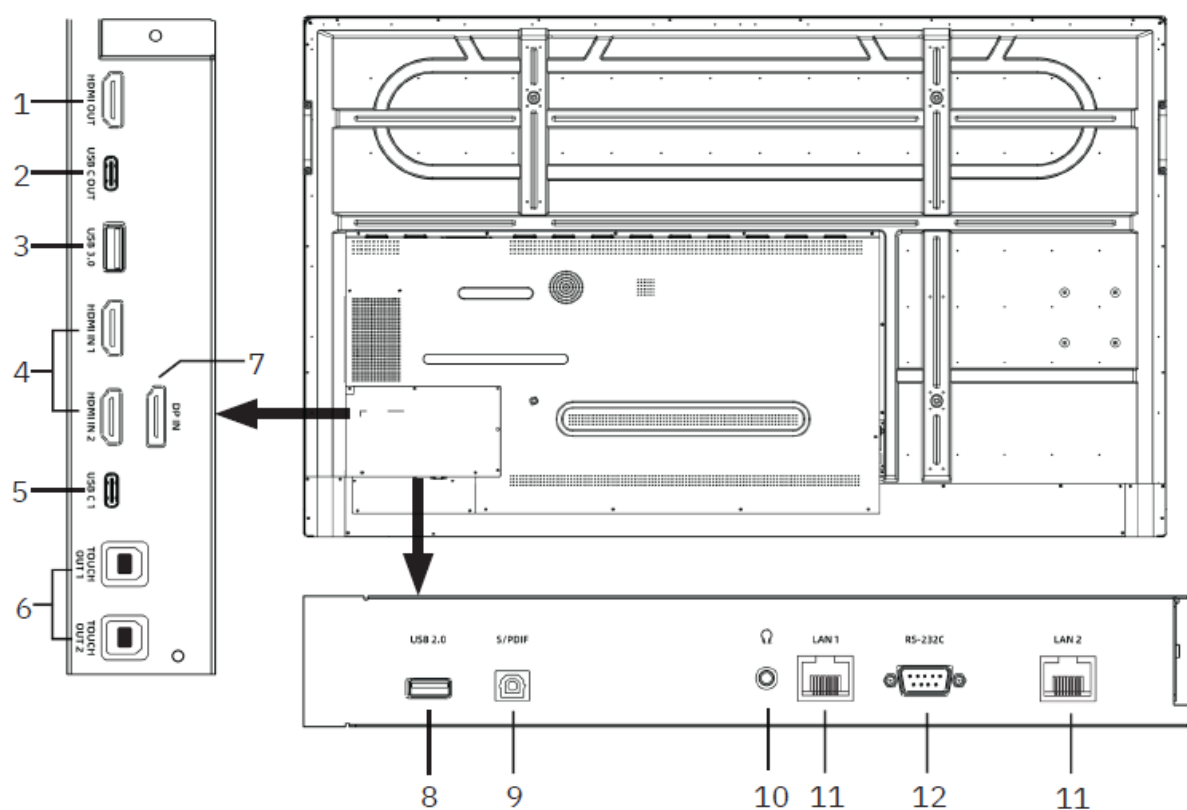
Carrying or Moving the LED


- When you move the LED , hold the frame of the LED .
- Be aware of the danger or harm which may caused by carrying or moving the LED , as the bezel is very thin.
- When transporting, do not subject the unit to shocks or vibration, or excessive force.

IDENTIFICATION OF CONTROLS



1	Power Switch	Push (I) to connect the power, push (O) to cut off the power. <i>Note: Don't cover the power switch.</i>
2	AC IN	Plug the AC cord into this jack and into a power outlet. (AC 100-240V 50/60Hz)
3		Switches the monitor power on or standby.
4		Press the button to display input source menu or exit the menu screen.
5		Press the button to return to previous menu.
6		Press the button to display desktop (Home page) on the monitor.
7		Press the button to open the setting menu.
8		Press the button to turn down the volume.
9		Press the button to turn up the volume.
10	TOUCH OUT	Connect an external device to support touch control of the external device on the IFP.
11	HDMI IN	Connect an HDMI or DVI device to this jack.
12	USB C	Full - featured Type C.
13	USB	Connect USB devices to this port.

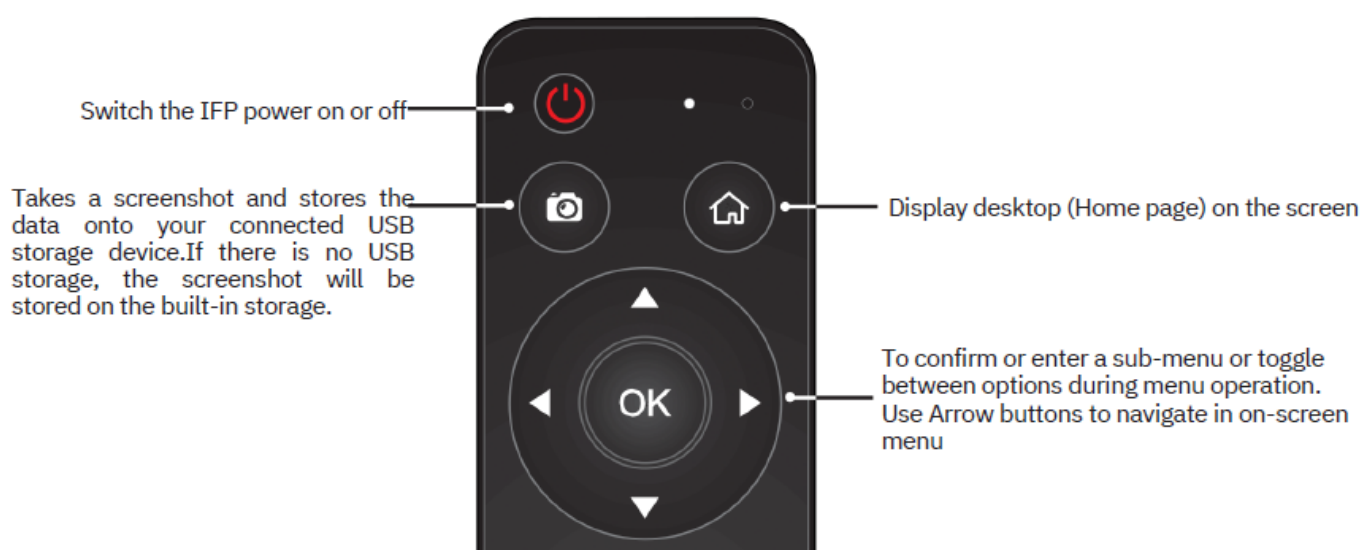


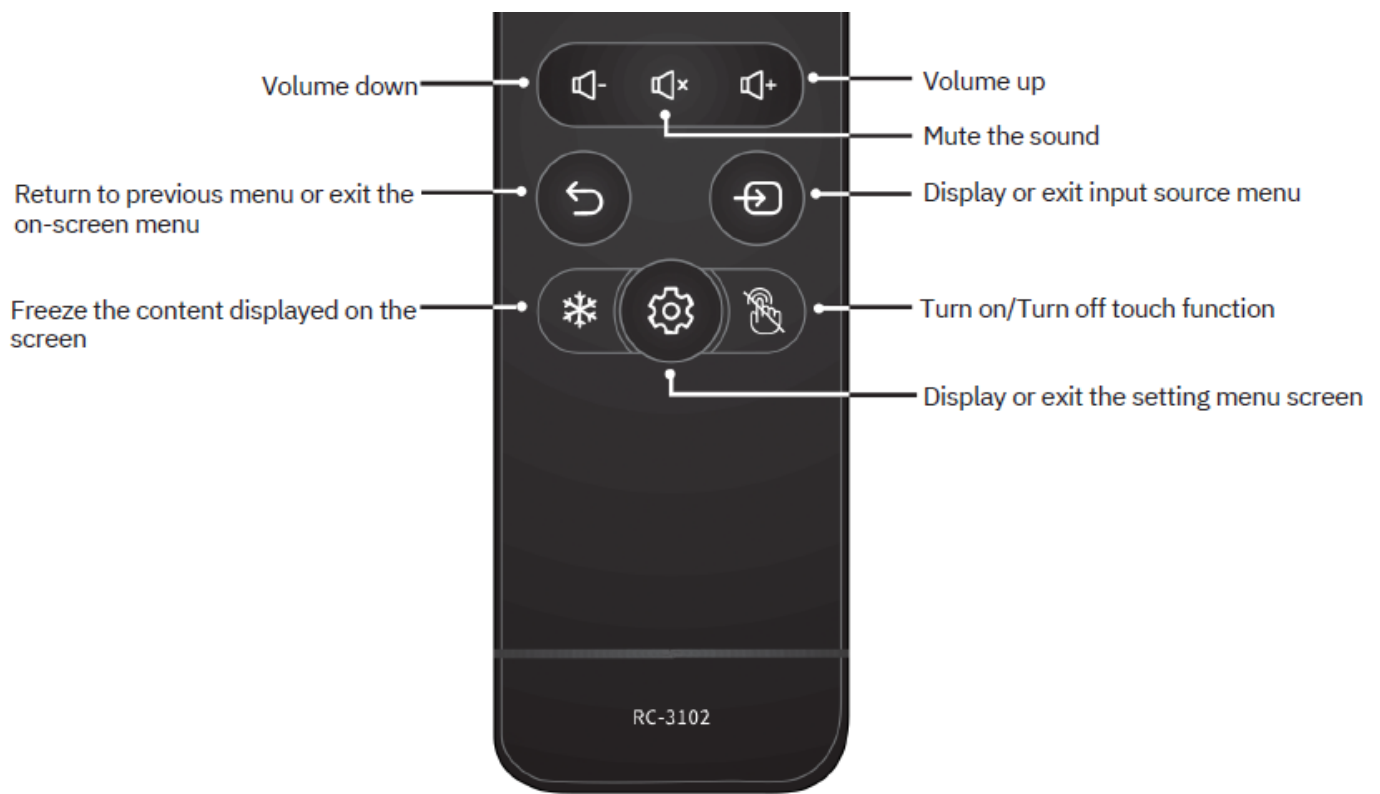
1	HDMI OUT	Connect an external device with a HDMI cable to this port to output the image and sound of the screen.
2	USB C OUT	Connect an external device with an USB-C cable to this port to output the image and sound of the screen.
3	USB 3.0	5V = 1A Connect USB devices to this port.
4	HDMI IN 1/2	Connect an external device with a HDMI cable to this port.
5	USB C 1	PD 100W, 5V 3A, 9V 3A, 15V 3A, 20V 5A = Connect an external device with an USB-C cable to this port.
6	TOUCH OUT 1/2	Connect an external device to support touch control of the external device on the screen.
7	DP(DisplayPort) IN	Connect an external device to DP out jack.
8	USB 2.0	5V = 0.5A Connect USB devices to this port for Android. <i>Note:</i> It must be used if you upgrade software.
9	S/PDIF digital audio output	Connect a digital sound system to this jack.
10		Connect headphones to this jack. The screen is the current audio output.
11	LAN 1/2	Connects the external network or the router.
12	RS 232C	For remote control, service and other uses.




The terms HDMI and HDMI High-Definition Multimedia Interface, and the HDMI Logo are trademarks or registered trademarks of HDMI Licensing Administrator, Inc. in the United States and other countries.

REMOTE CONTROL





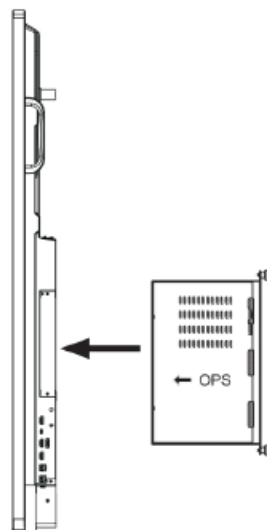
NOTES

- This operation manual provides a description based on operating functions with the remote control.
- In different mode, some buttons may have different function.
-  positioning of cell for non-rechargeable carbon-zinc batteries used for remote control device.

GETTING STARTED

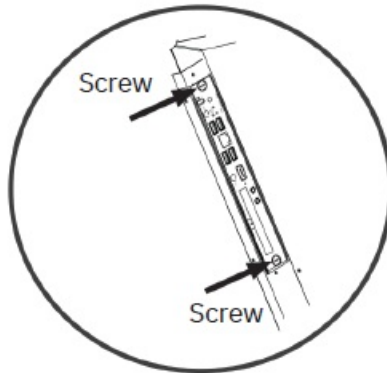
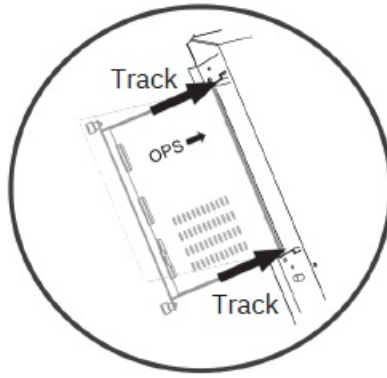
Installation of the OPS

Warning: Please cut off power before the OPS can be plugged in and out, no hot plug.



1. Insert the OPS into the slot along the track on both sides.

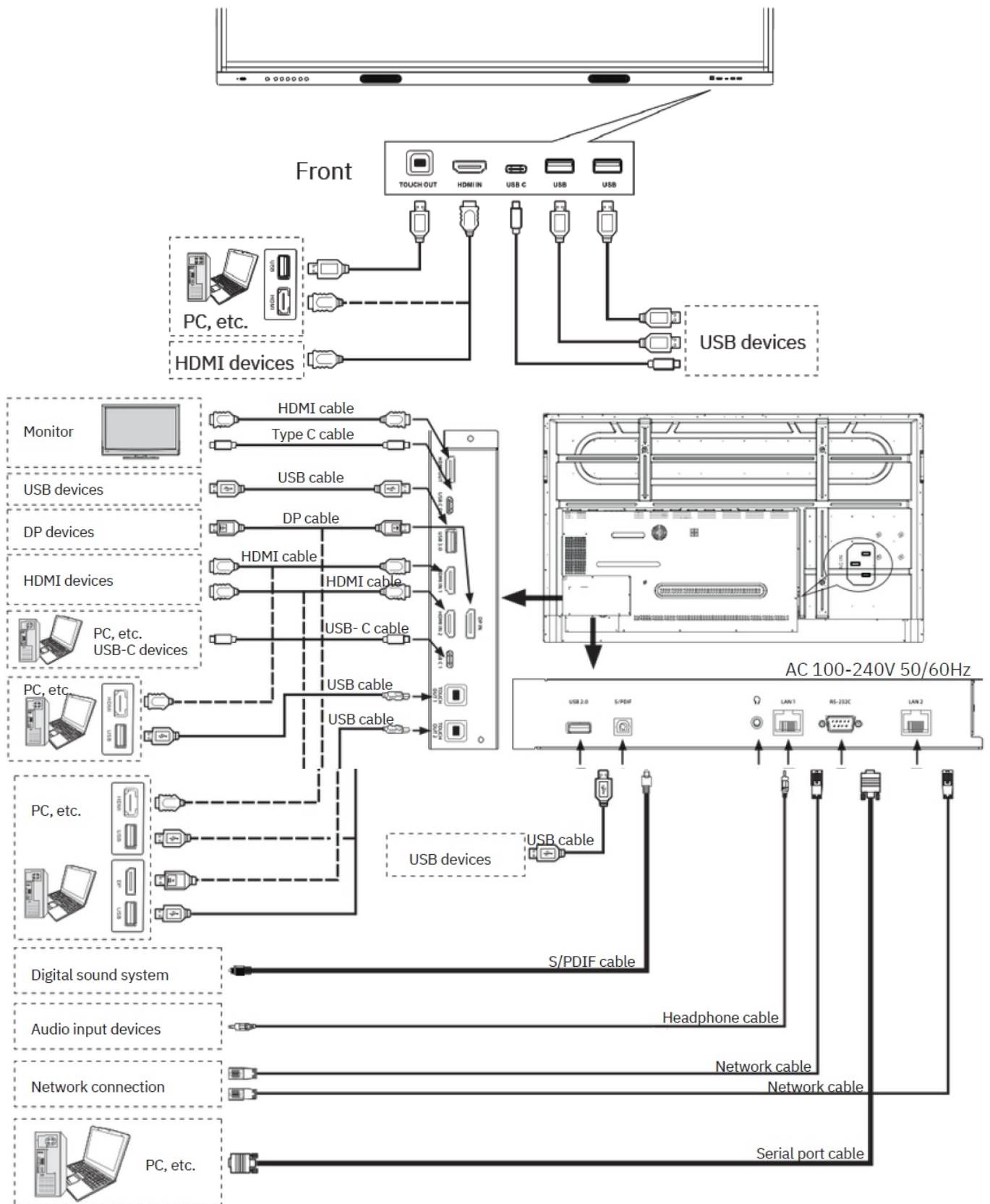
2. Fasten the OPS with two screws provided on the side frame.



CONNECTIONS

Cautions Before Connecting

- When connecting an external device to the screen, make sure that the screen and the external device are turned off.
- Check the plugs at the ends of the cables to make sure that they are the correct type before plugging them into the jacks on the screen.
- Make sure that all plugs are securely inserted into the jacks. Loose connections can result in image or color problems.
- The illustration of the external device may be different depending on your model.
- Refer to the operating manual of the external device as well.





- Connect TOUCH OUT with USB cable to PC USB port.
- Connect PC with HDMI cable or DP cable. Please choose the proper method of connection based on your device. (Only for PC, HDMI, DP signal)
- Touch out 1 corresponds to the HDMI 1. Touch out 2 corresponds to the HDMI 2 or DP.


Note: Before using headphones, adjust the device volume to avoid excessive volume, as hearing damage may result.

BASIC OPERATIONS

Turning the LED on or off

1. Plug the power cord into an AC power outlet.
2. Press Power Switch on the LED.
3. Now the LED is in standby mode. Wait a moment until the power indicator lights up, then press  button to turn on the LED.

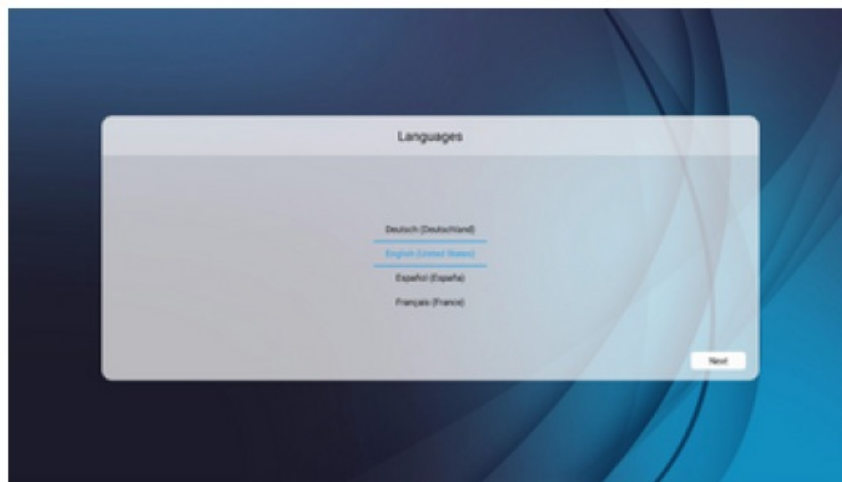
Note: Be sure to wait for a few seconds before pressing  button. If you promptly press button then the LED may not respond or act wrongly.

4. Press  button again to turn off the LED and put the display in standby mode.
5. To cut off the power completely, press Power Switch on the back of the LED.

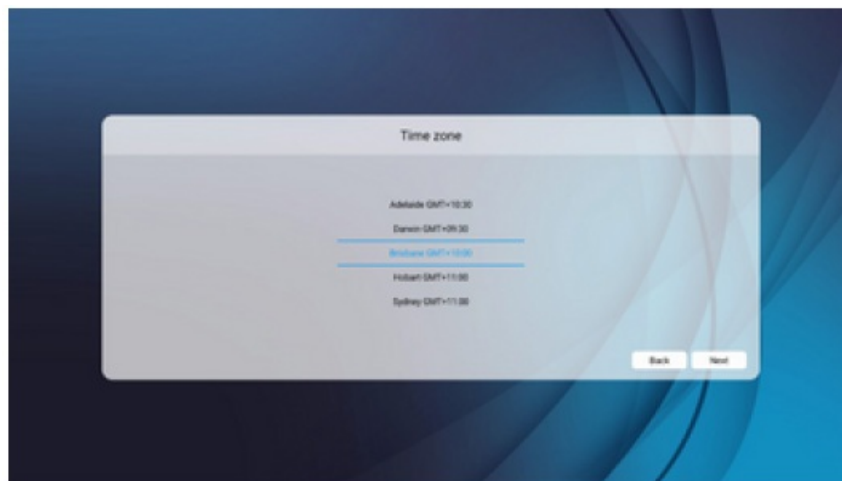
FIRST TIME INSTALLATION

When turning on the LED for the first time, the below shown installation menu pages will appear on the screen.

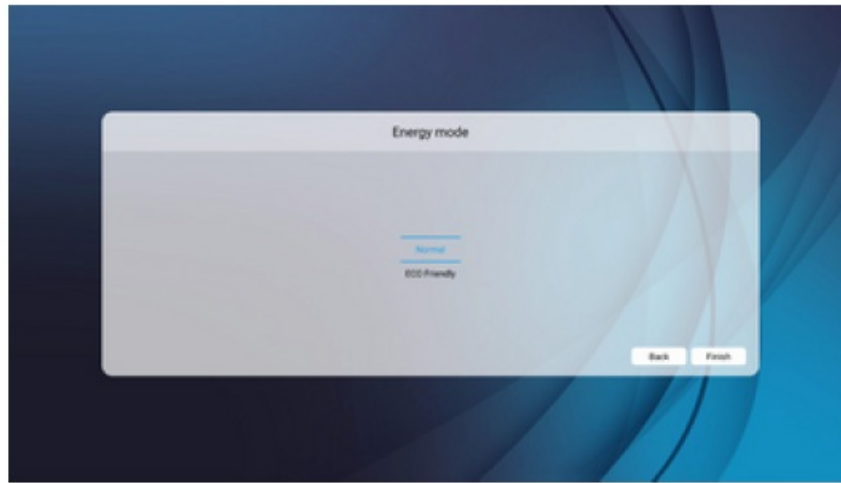
- Select the desired menu language, press Next to go to the next page.



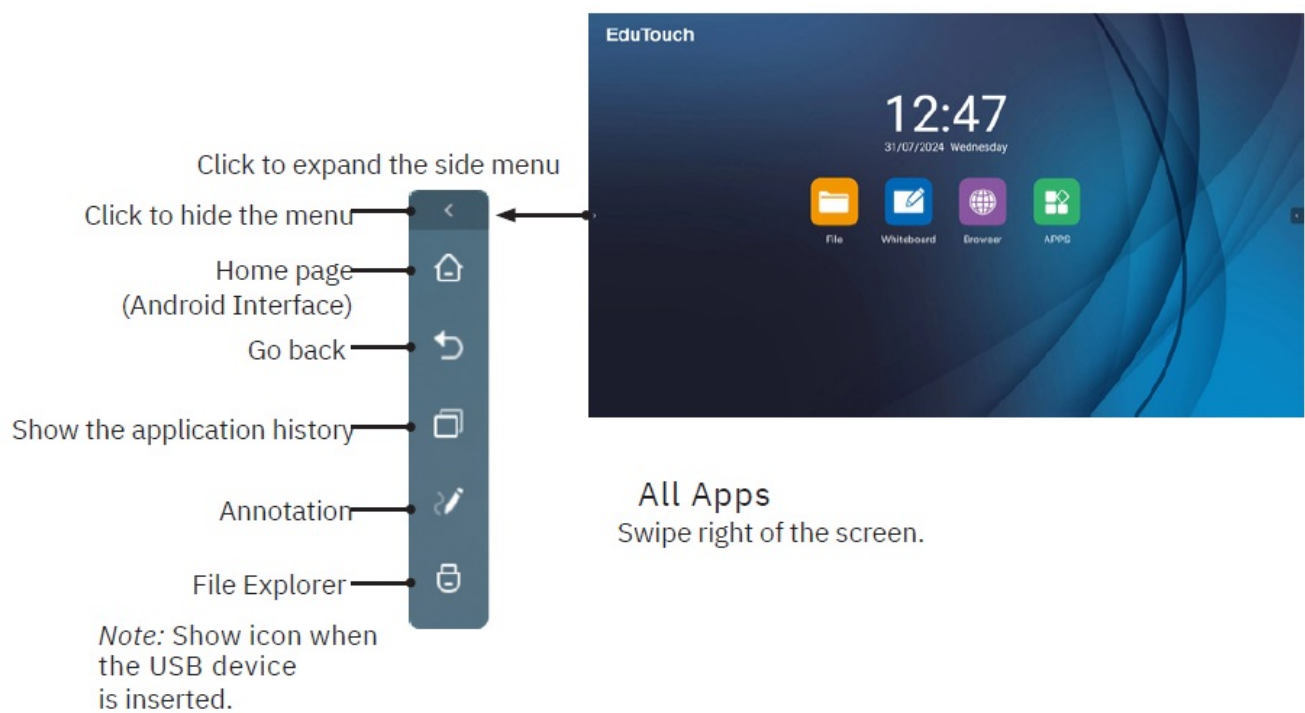
- Select the Time Zone, press Next to go to the next page

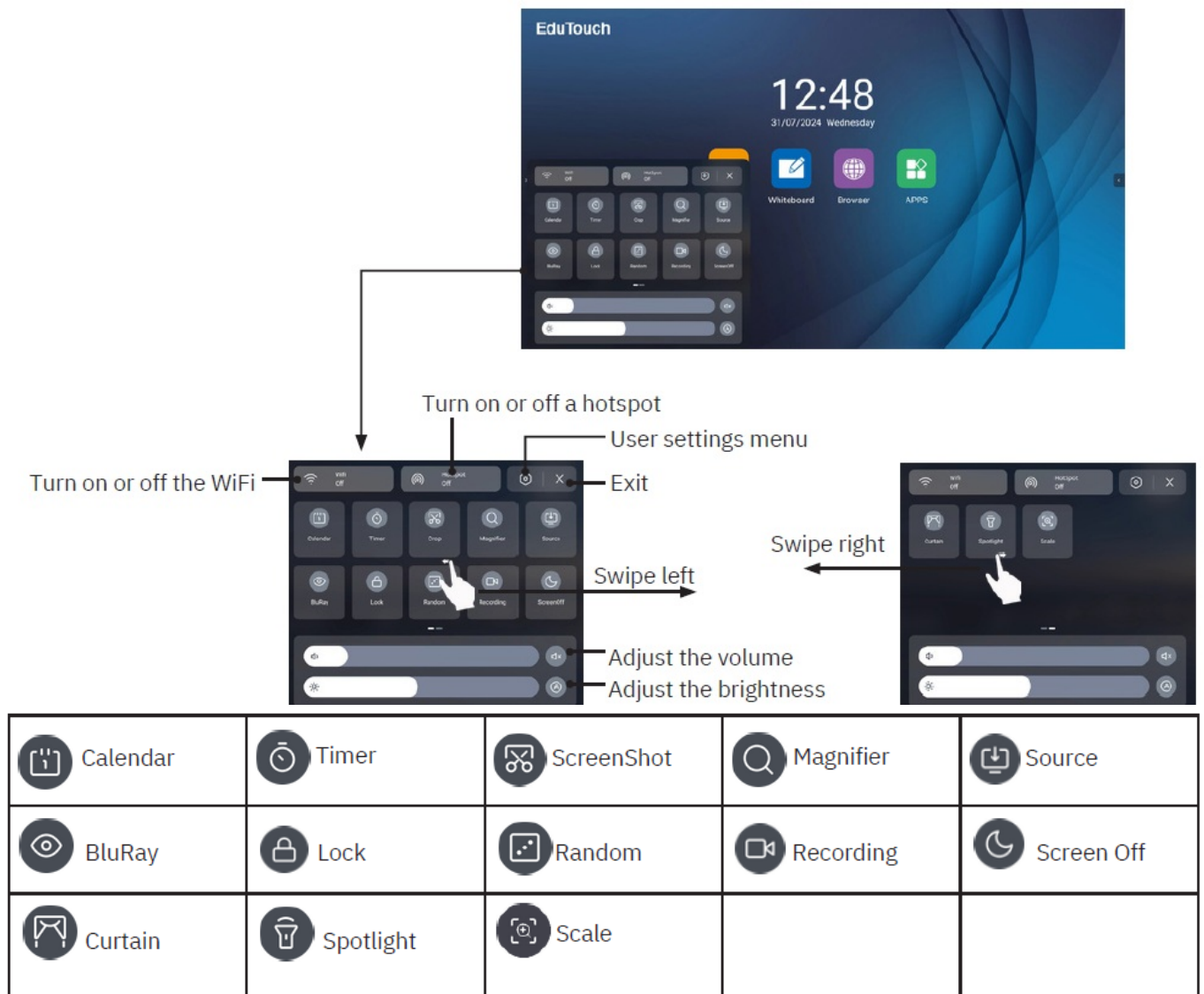


- Select the Energy mode, press Finish to finish the installation.



OPERATING THE MENU





USER SETTINGS MENU LIST

1. NETWORK & CONNECTED DEVICES

Ethernet: Plug the LAN-cable into the LAN-port on the bottom of the LED, the LED will be get an IP address automatically and connect to the internet.

WiFi: Turn the WiFi on. Select the network from WLAN network list to connect it.

Note: Once the LED is connected to the WLAN network successfully then whenever the network is available, the LED will be reconnected to the network without entering the password.

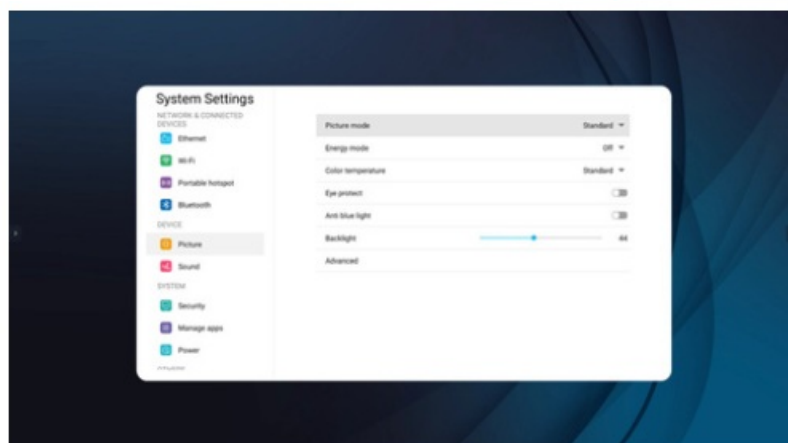
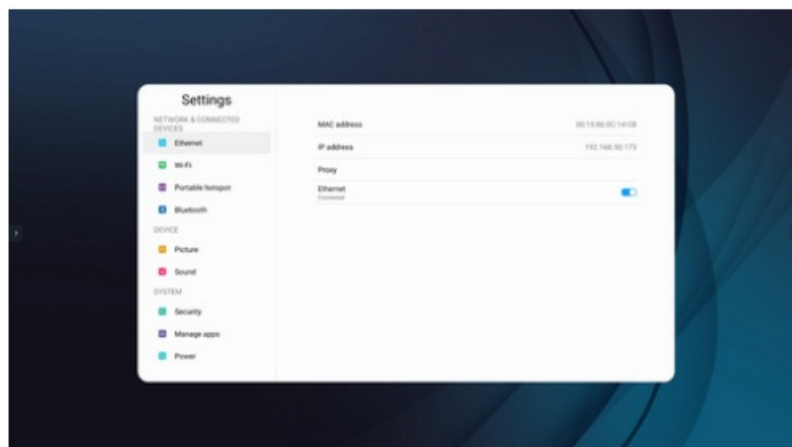
Portable hotspot: Setting Portable WiFi hotspot.

Bluetooth: Automatic search for Bluetooth devices.

2. DEVICE

Picture : Adjusting picture

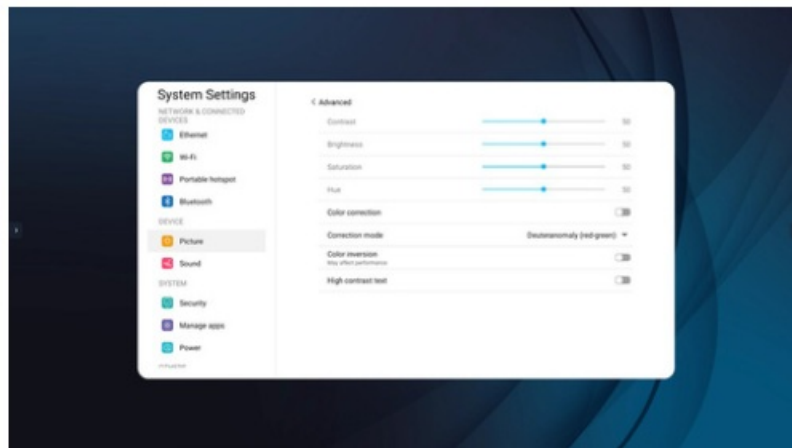
Picture e	Picture mode		Select picture mode. If you select “User”, you can set the level of the Contrast, Brightness, Saturation, Sharpness as you desire.
	Energy mode		The backlight brightness is decreased.
	Color temperature		Select the color temperature.
	Eye protect		The backlight brightness is decreased automatically after writing for 3 seconds to protect eyesight. If it had not any writing, the backlight brightness will be returned to before it after about 10 seconds.
	Anti blue light		Turn on to decrease blue light to protect eyesight.
	Backlight		Set up the overall brilliance of the monitor.
	Advanced	Contrast	Adjust the contrast.
		Brightness	Adjust the brightness.
		Saturation	Adjust the color saturation.
		Hue	Adjust the hue.
		Color correction	Turn on or off.
		Correction mode	Select the Correction mode.
		Color inversion	Turn on or off.
			High contrast text Turn on or off.



USER MENU LIST


Sound: Adjusting sound

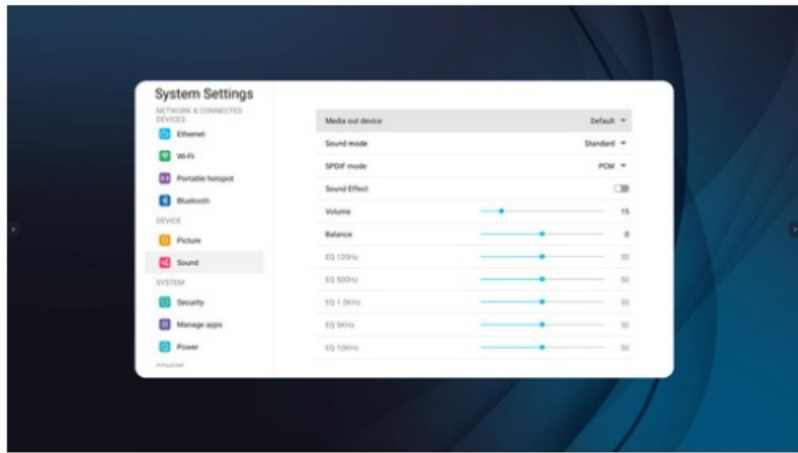
Sound	Media out device	Selection of Media out device.
	Sound mode	Select sound mode. If you select "User", you can set the level of the frequency response as you desire.
	SPDIF mode	<ul style="list-style-type: none">• Select the digital audio output mode.• Select "RAW" to output audio signal as its original format.• Select "PCM" to output audio signal by PCM format.
	Sound Effect	Turn on or off the surround sound effect.
	Volume	Adjust volume.
	Balance	Adjust volume level of right and left speakers.



SYSTEM

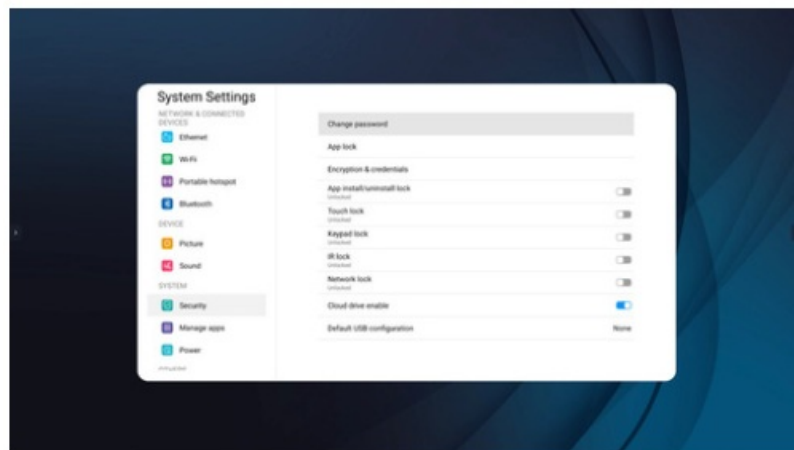
Security (The default password is 0000)

- **Change password:** Password settings.
- **App lock:** In order to lock the App.
- Encryption & credentials
- **App install/uninstall lock** :In order to lock the App install.
- **Touch lock:** To disable the function of the touch panel.
- **Keypad lock:** In order to lock the monitor buttons.
- **IR lock:** To disable the function of the remote. (Except  button)
- **Network lock:** To disable the function of the network.
- **Cloud drive enable:** Turn on or off .
- Default USB configuration



Manage apps

- **Installed apps:** Displays the list of installed app.
- **All apps:** Display all apps.



Power

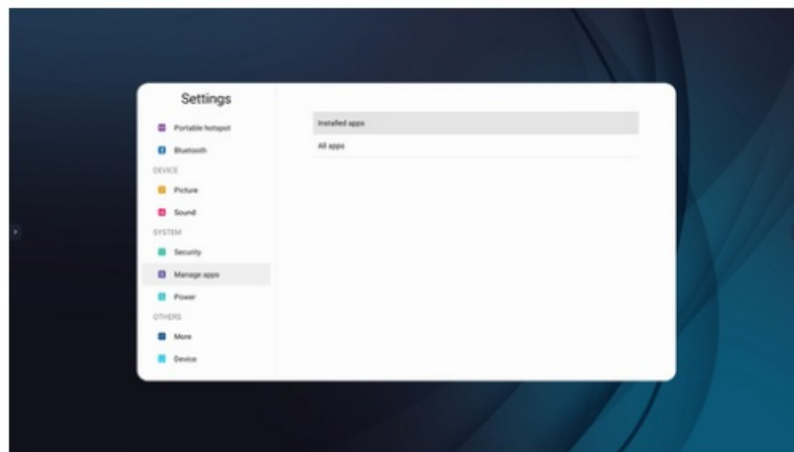
Timing power on/off

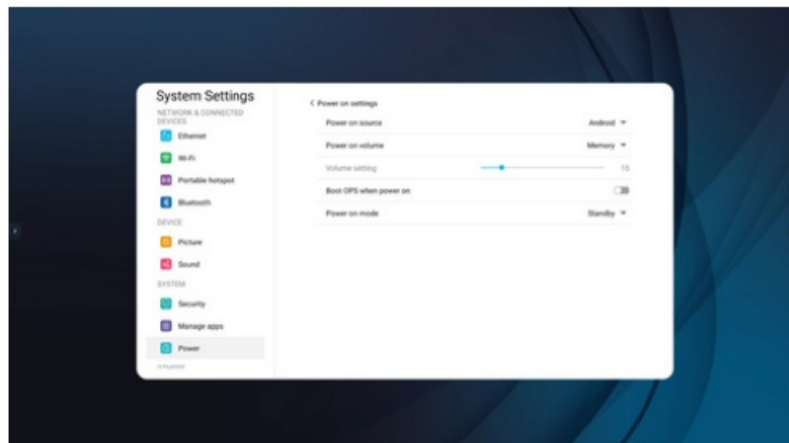
- **Timing off:** To switch the LED to standby at a specified time.
- **Timing on:** turn on the LED automatically to source at a certain time.

Power on settings

Power on settings	Power on Source	In Memory mode, when the LE is turned on, it will automatically switch to the source where it powered off last time. Otherwise it is in setting mode.
	Power on Volume	<ul style="list-style-type: none"> Select Memory mode, the power on volume will same as the turn off. Select User mode, the power on volume is the value of this setting.
	Volume Settings	
	Boot OPS when Power on	Turn on or off.
	Power on mode	Select Power on mode.

- **Wake on lan:** Turn on or off the wake on lan function.
- **Sleep timer:** Set the duration of time until the LED automatically goes into Standby mode.
- **Auto sleep:** Auto Sleep will bring the LED to standby automatically when there is no signal input for a certain time.

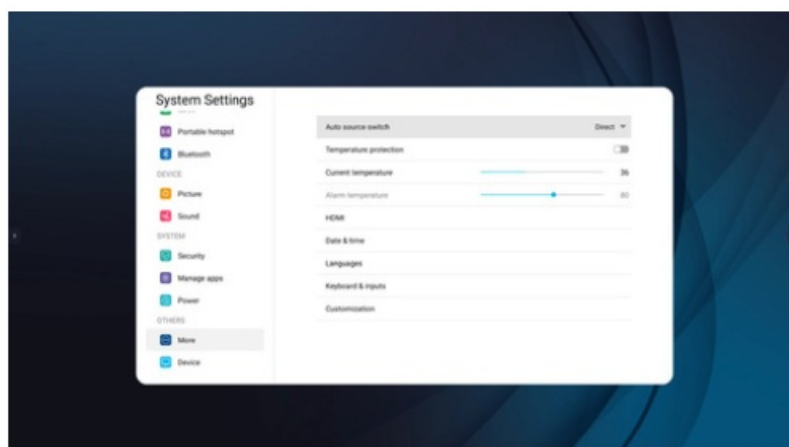




OTHERS

More

- **Auto source switch:** Select On to automatically switch to plug in source (Prompt, Direct).
- **Temperature protection:** Turn on or off the temperature protection function.
- **Current temperature :** Showing the present temperature value of the LED.
- **Alarm temperature:** Setting alarm temperature.



Note: When the temperature protection is turned on, if the current temperature exceeds the alarm temperature, countdown is on for the LED turn off. If you want to cancel shutdown can be canceled within 30 seconds.

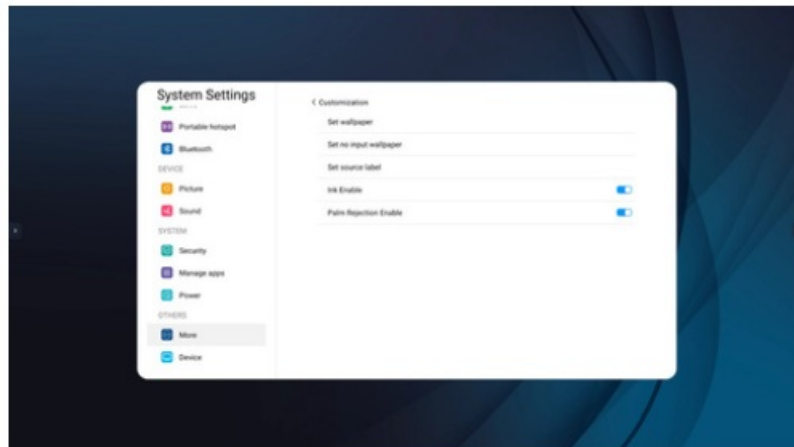
HDMI

- **HDMI EDID version** :Select HDMI EDID Ver.
- **HDMI CEC**: Turn on or off HDMI CEC function.
- **Date & time** :To manually set date and time, you should toggle “Automatic date & time” to OFF.
- **Languages**: Select menu language.
- **Keyboard & inputs**: Setting input method.

Customization

Setting wallpaper, no input wallpaper, source label.

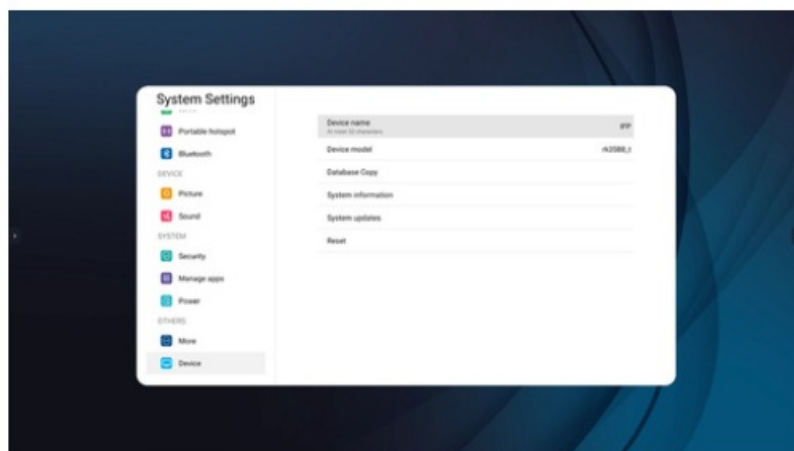
Ink Enable: When enabled, it supports the ink function in Windows10.



Device

It displays the following information: Device name Device model

- **Database Copy**: Export to USB, Import from USB.
- **System information**: Display system information.
- **System updates**: Local update, Online update.
- **Reset**: Reset all settings to factory defaults.



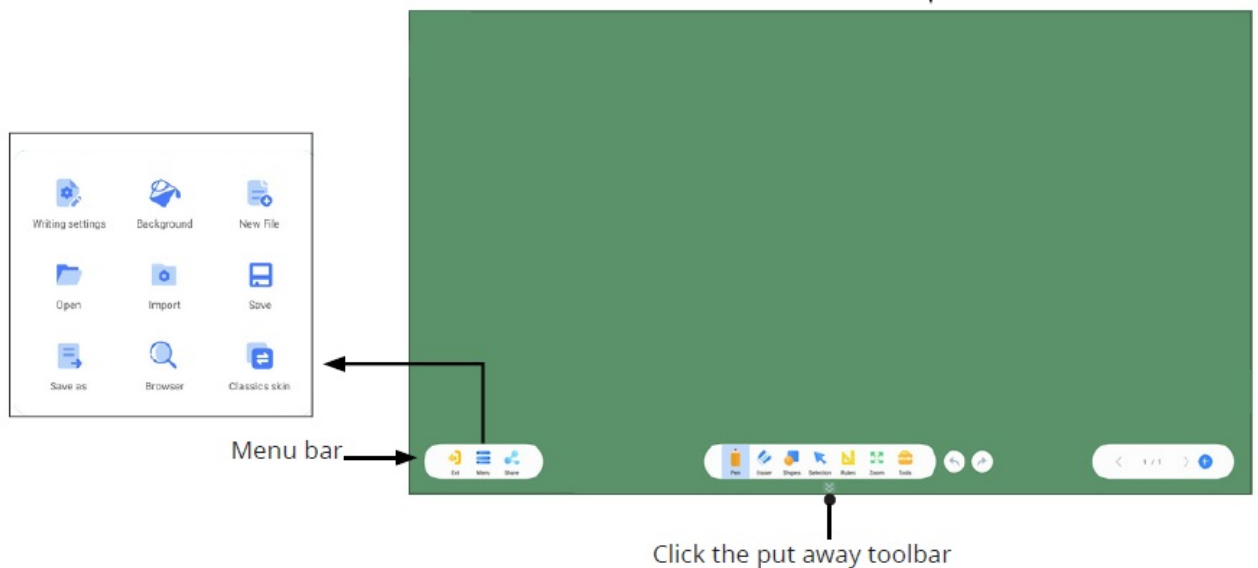
ANNOTATION



Note: In annotation mode, it supports Gesture Eraser function. (When the screen area is sufficiently touched by the hand, the wipe icon appears, move the icon to wipe.)

WHITEBOARD



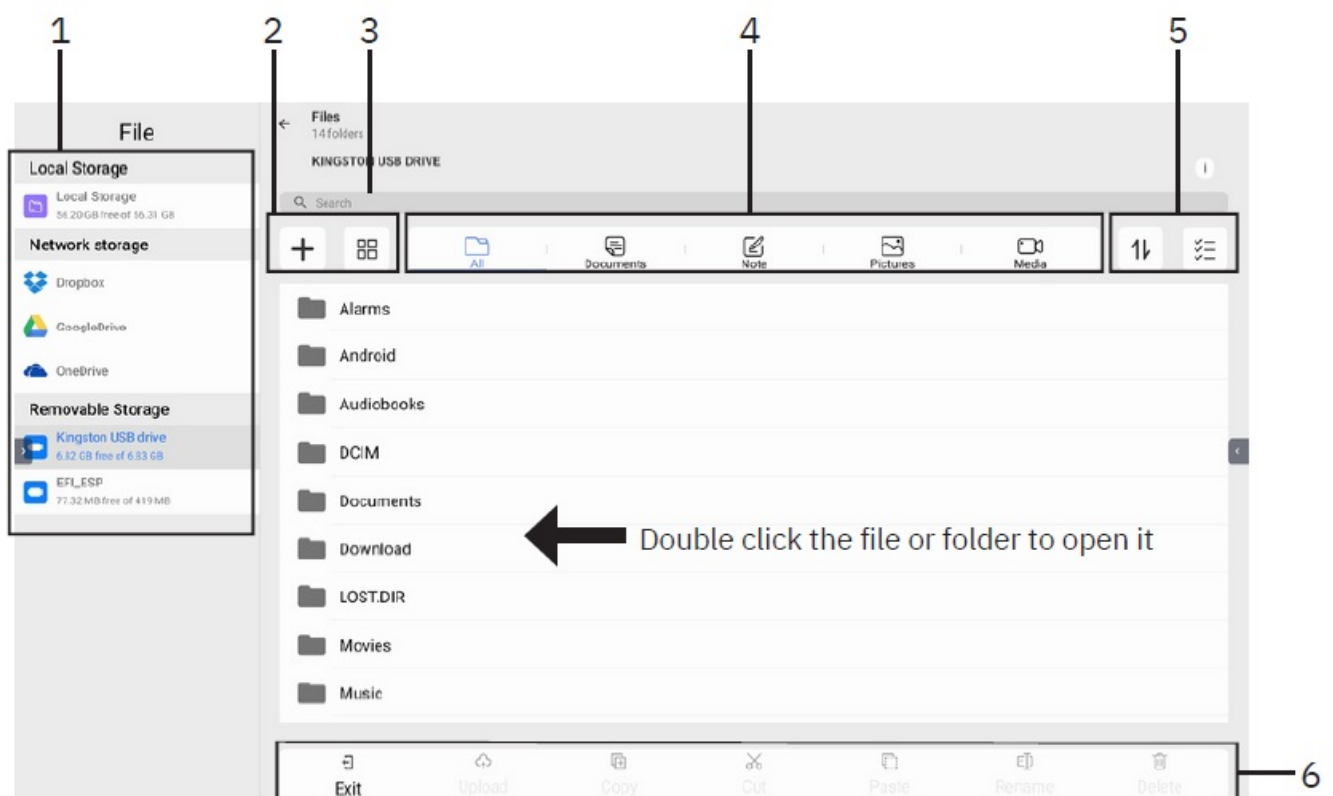













	Pen	Select Pen type and set properties of writing
	Eraser	Select Eraser type
	Shapes	Select commonly used shapes
	Selection	Switch to selection mode
	Rulers	Choose tools such as Ruler, Triangle ruler etc
	Zoom	Switch to roaming mode
	Tools	Turn on the tool box
	Undo	Cancel operation
	Redo	Restore operation
	Previous Page	Previous Page
	Next Page	Next page
	add page	Add a new page

File Explorer

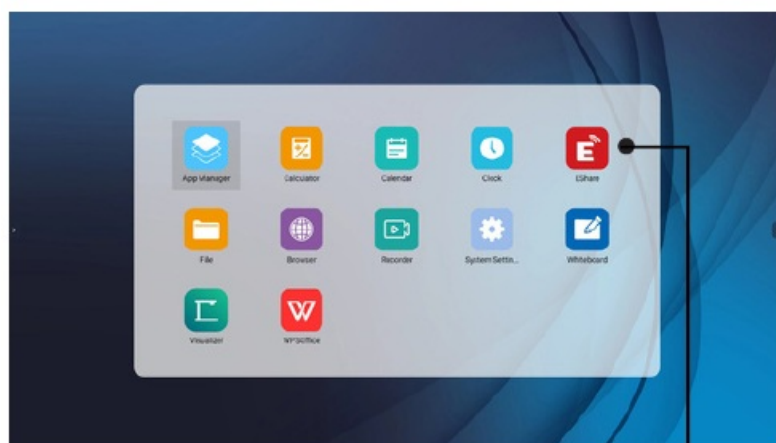
Notes

- Never remove the USB storage device or turn off the LED while using the USB storage device.
- It is recommended that you back-up your USB device data.
- Certain types of USB devices may not be compatible with this LED, please change another.
- Please use only a USB storage device which was formatted as a FAT32 file system.
- You can also use file explorer to view compatible photo, text, movie or play compatible music.

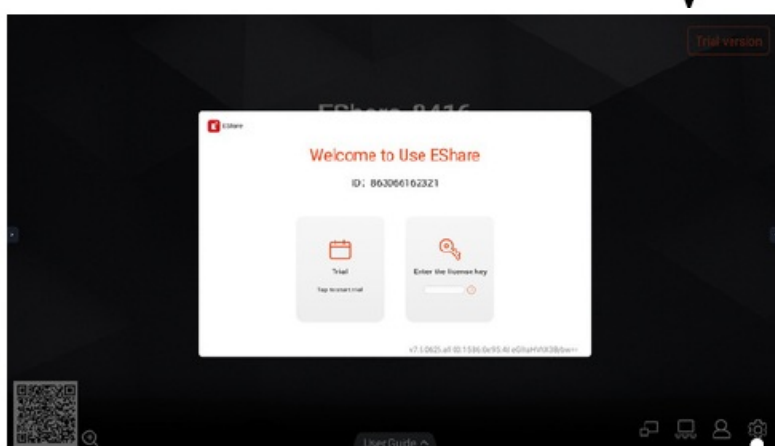


1	File-storage locations		6	 Exit	Click to exit file manager
2		Add file or folder		 Copy	Click to copy file
		Tile file or folder for window list		 Cut	Click to cut file
		List file or folder for window list		 Paste	Click to paste file
3	Search file or folder			 Rename	Click to rename file
4	Category selection			 Delete	Click to delete file
5		Sort			
		MultiSelect/Select All/Unselect			

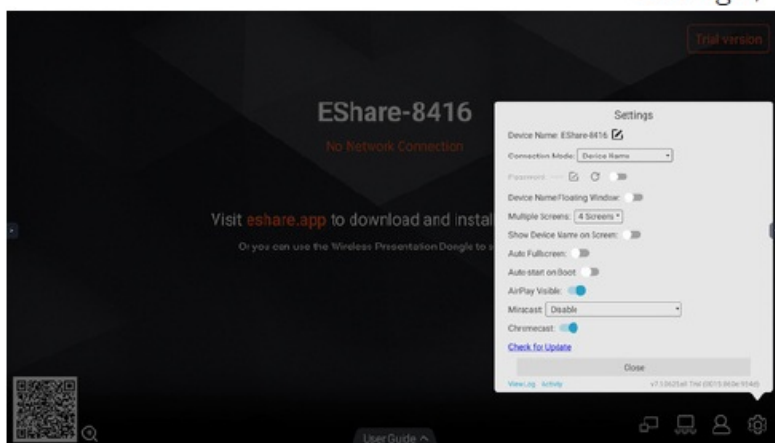
Note: Connect device hotspot or in the same network with the device.



Enter the license key



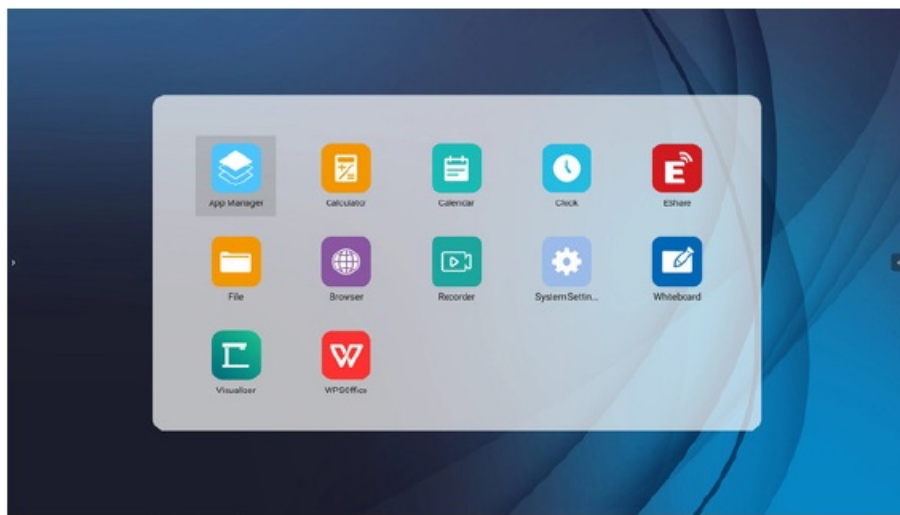
Settings



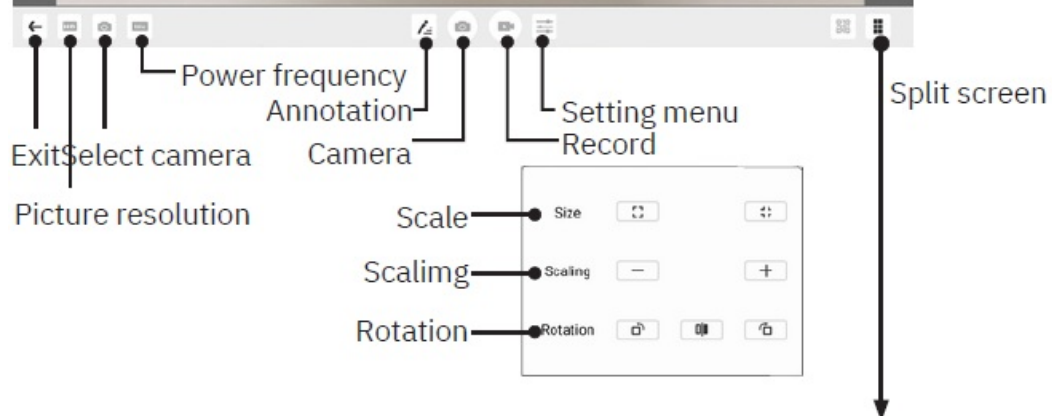
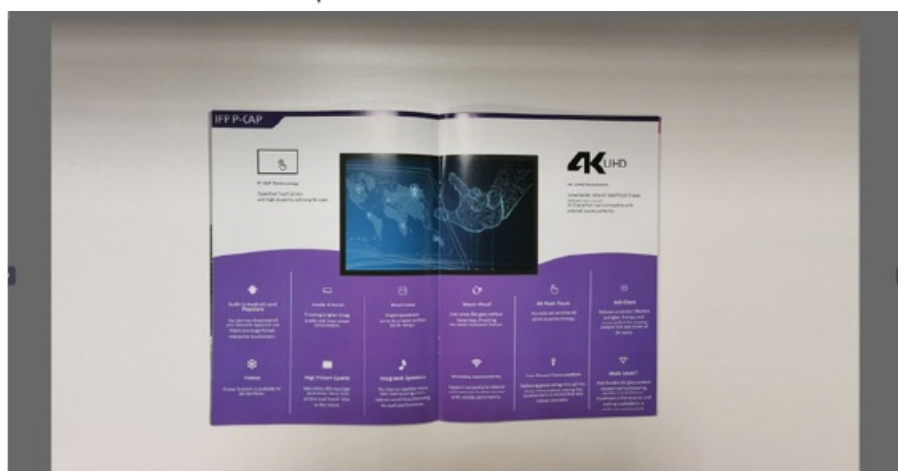
Visualizer

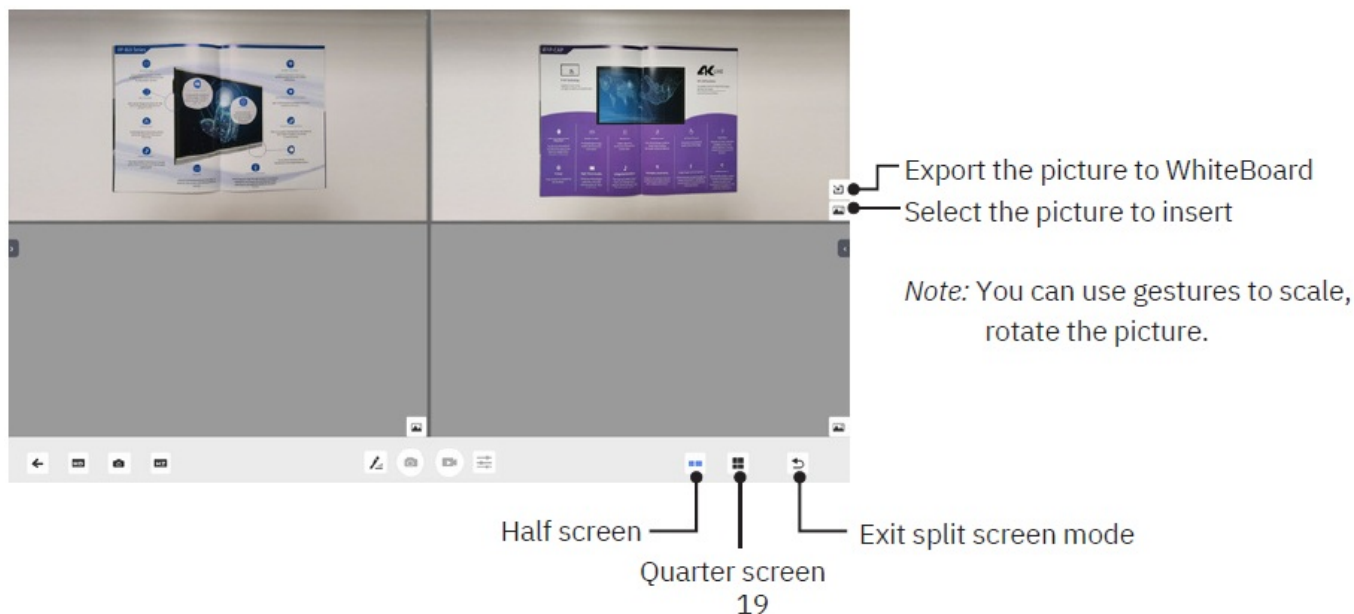
Visualizer: Use the high-Speed Scanner or camera to capture items such as books and display them to the client.

Note: Before using the Visualizer function, please connect a high-Speed Scanner or camera to the LED.



Click to enter Visualizer





19

TROUBLESHOOTING

- If, after reading these operating instructions, you have additional questions related to the use of your LED, please call the services center in your local area.
- Before calling service, please check the symptoms and follow suggested solutions.

Remote Control

Problem	Possible Solutions
Remote control does not operate	<ul style="list-style-type: none"> • Make sure the power cord is plugged in. • Check the orientation of the batteries. • The batteries could be weak. Replace the batteries.

Video and Audio

Problem	Possible Solutions
No picture (screen not lit) but no sound	<ul style="list-style-type: none"> • Make sure the power cord is plugged in. • Press POWER on the LED or on the remote control. • Test another source.
Dark, poor or no picture (Screen lit) but good sound	<ul style="list-style-type: none"> • Select a proper picture mode. • Adjust the brightness in the video setting. • Test another source.
No color, dark picture or abnormal color	<ul style="list-style-type: none"> ● Adjust the color saturation in the video setting.
Good picture but no sound	<ul style="list-style-type: none"> • The sound may be muted. Press MUTE again to cancel. • • Verify if sound should output and/or test another source.
Audio noise	<ul style="list-style-type: none"> ● Communication problems may occur if infrared communication equipment (e.g., infrared cordless headphones) is used near the LED. Move the infrared communication equipment away from the LED until the noise is eliminated.

General

Problem	Possible Solutions
Some items can not be accessed	<ul style="list-style-type: none"> ● If a setting option appears in gray, this indicates that the settings option is unavailable in current input mode. Some display menu items may be different when the unit works in different sources.
Remote control command is not working in some cases	<ul style="list-style-type: none"> ● During the timing of USB device detection (i.e. when the LED is turned on with USB device connected, or when you plug in USB device during the working of the LED), the display may not react on remote control buttons in such case. Wait a moment before the remote control should function again.
Control buttons do not operate	<ul style="list-style-type: none"> ● Disconnect the power cord and wait for a few seconds. Then replug the power cord and turn on the unit again.
LED puts itself in stand-by mode as external device or PC goes in sleep-●ing mode	Change the energy settings/sleeping-mode of the external device or PC.
Fog appear on the screen	<ul style="list-style-type: none"> ● For the safety of screens, adding stalinite out of the screens. It is need to keep certain space between two layers for reserving air passages generate cross-ventilation and for insuring heat dissipation. Fog mainly comes from the temperature difference between the screen and the external Moisture streaks coagulate when hot air meets the low temperature glass surface The fog does not impact the normal use and it disappears after several-hour usage,

SPECIFICATIONS

Model No.	P55SX	P65SX	P75SX	P86SX
Visible screen size	55inches(diagonal) 65inches(diagonal) 75inches(diagonal)			86inches(diagonal)
Power Source	100-240V~50/60Hz 100-240V~50/60Hz 100-240V~50/60Hz			100-240V~50/60Hz
Current	3.5A	3.6A	4.0A	5.0A
Power Consumption	350 W	360 W	400 W	500 W
Standby condition *	≤ 0.5 W	≤ 0.5 W	≤ 0.5 W	≤ 0.5 W
Number of pixels	3840×2160	3840×2160	3840×2160	3840×2160

Dimensions	1271×781×84	1490×905×84	1714×1033x84	1959x1170x84
(W×H×D) (Unit: mm)	28 kg Net	39 kg Net	48 kg Net	61 kg Net
Weight	Operating temperature: 5°C - 35°C Storage temperature: -15°C - 45°C Storage humidity: 10% - 80% Operating humidity: 20 % - 80 % (no moisture condensation) Atmospheric pressure: 86kPa ~ 106kPa			
Operating conditions				
Connection terminals of the screen				
HDMI OUT	1			
USB C OUT	1			
USB C	2			
USB	4			
HDMI IN	3			
DP IN	1			
TOUCH OUT	3			
EARPHONE	1			
LAN	2			
S/PDIF	1			
RS-232C	1			

Notes

1. Design and specifications are subject to change without notice.
2. Weight and dimensions shown are approximate.
3. Specifications and external appearance may be changed for the sake of improvement.

Due to different standby conditions, the standby power consumption of some models could be higher than 0.5W.

Declaration of RoHS2 Compliance

This product has been designed and manufactured in compliance with Directive 2011/65/EU of the European Parliament and the Council on restriction of the use of certain hazardous substances in electrical and electronic equipment (RoHS2 Directive) and is deemed to comply with the maximum concentration values issued by the European Technical Adaptation Committee (TAC) as shown below

Substance	Proposed Maximum Concentration	Actual Concentration
Lead (Pb)	0.1%	< 0.1%
Mercury (Hg)	0.1%	< 0.1% <
Cadmium (Cd)	0.01%	0.01% <
Hexavalent Chromium (Cr6+)	0.1%	0.1% <
Polybrominated biphenyls (PBB)	0.1%	0.1% <
Polybrominated diphenyl ethers (PBDE)	0.1%	0.1% <
Bis (2-ethylhexyl) phthalate (DEHP)	0.1%	0.1% <
Butyl benzyl phthalate (BBP)	0.1%	0.1% <
Dibutyl phthalate (DBP)	0.1%	0.1% <
Diisobutyl phthalate (DIBP)	0.1%	0.1%


Certain components of products as stated above are exempted under the Annex III of the RoHS2 Directives as noted below

Examples of exempted components are

- Mercury in cold cathode fluorescent lamps and external electrode fluorescent lamps (CCFL and EEFL) for special purposes not exceeding (per lamp):
 - Short length (≤ 500 mm): maximum 3.5 mg per lamp.
 - Medium length (> 500 mm and $\leq 1,500$ mm): maximum 5 mg per lamp.
 - Long length ($> 1,500$ mm): maximum 13 mg per lamp.
- Lead in glass of cathode ray tubes.
- Lead in glass of fluorescent tubes not exceeding 0.2% by weight.
- Lead as an alloying element in aluminium containing up to 0.4% lead by weight.
- Copper alloy containing up to 4% lead by weight.
- Lead in high melting temperature type solders (i.e. lead-based alloys containing 85% by weight or more lead).
- Electrical and electronic components containing lead in a glass or ceramic other than dielectric ceramic in capacitors, e.g. piezoelectronic devices, or in a glass or ceramic matrix compound.

- PH 0(08)8)9 292282 81 61 68 18
- INFO@3MONKEYSAV.COM
- WWW.3MONKEYSAV.COM.AU

Documents / Resources

	<p>EduTouch P Series Interactive LED Panel [pdf] Instruction Manual</p> <p>SX-panels, SX panels, P Series Interactive LED Panel, P Series, Interactive LED Panel, LED Panel, Panel</p>
--	--

References

- [User Manual](#)

Manuals+, Privacy Policy

This website is an independent publication and is neither affiliated with nor endorsed by any of the trademark owners. The "Bluetooth®" word mark and logos are registered trademarks owned by Bluetooth SIG, Inc. The "Wi-Fi®" word mark and logos are registered trademarks owned by the Wi-Fi Alliance. Any use of these marks on this website does not imply any affiliation with or endorsement.