



EDUP EPB3519 Bluetooth Adapter Installation Guide

[Home](#) » [EDUP](#) » EDUP EPB3519 Bluetooth Adapter Installation Guide 



Installation Guide
Bluetooth adapter

Note: Support Win7/8/8.1/10 system

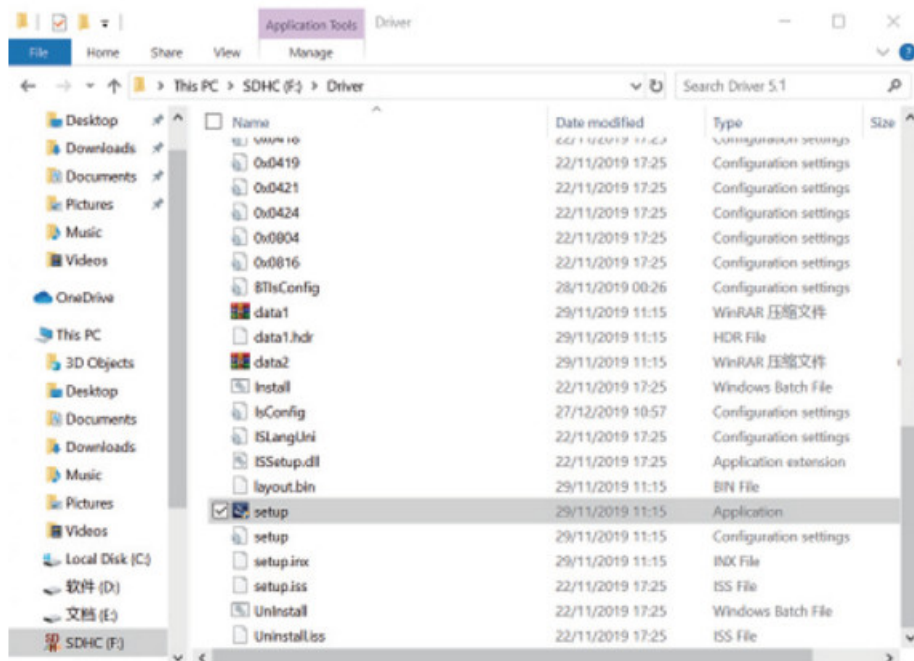
Contents

- [1 Installation Guide](#)
- [2 Documents / Resources](#)
- [3 Related Posts](#)

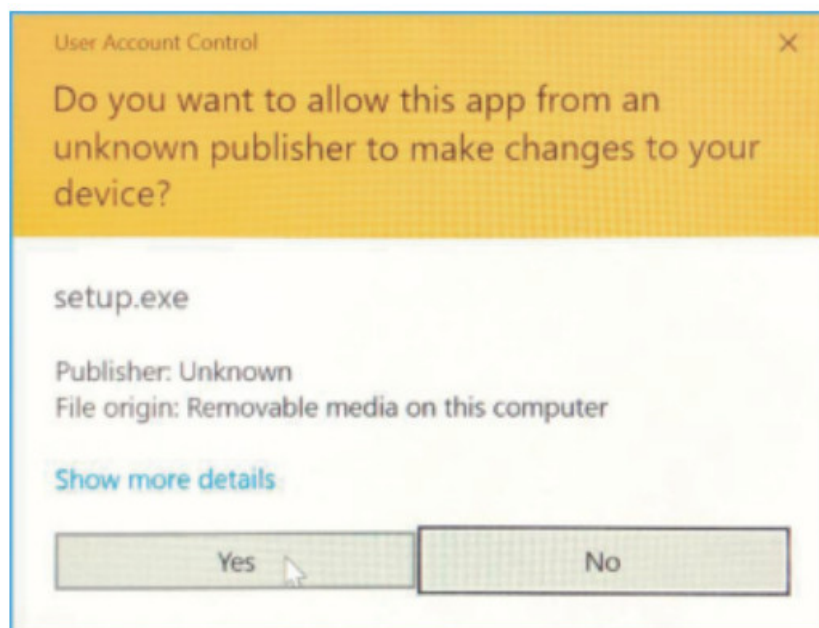
Installation Guide

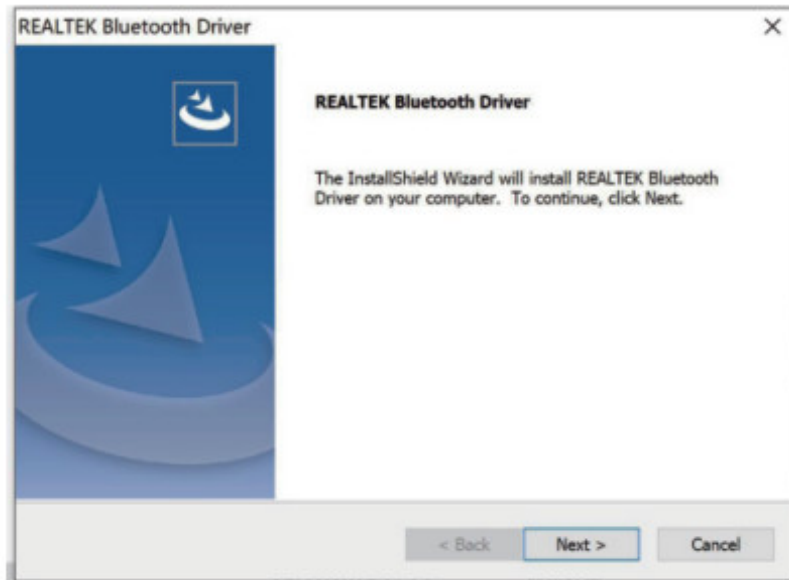
Part 1,Take Windows 10 as an Example

1. Connect Bluetooth adapter to computer, insert our disk which contains a driver file, and double click "Setup.exe" to start



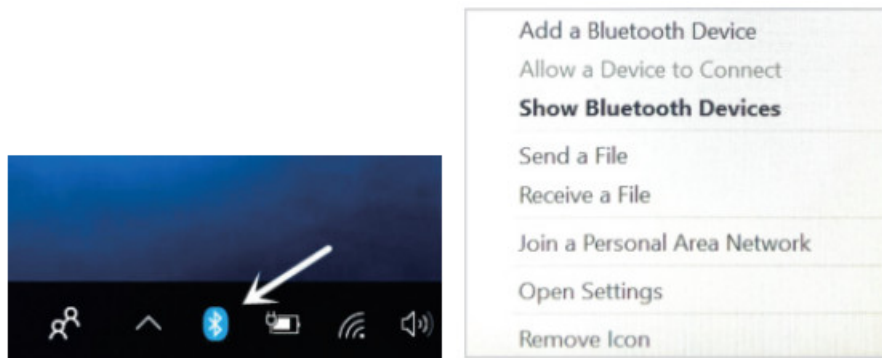
2. Select "Agree and Install the Bluetooth Driver to start installation After the progress bar indicates it is done, It is done, please restart the computer.



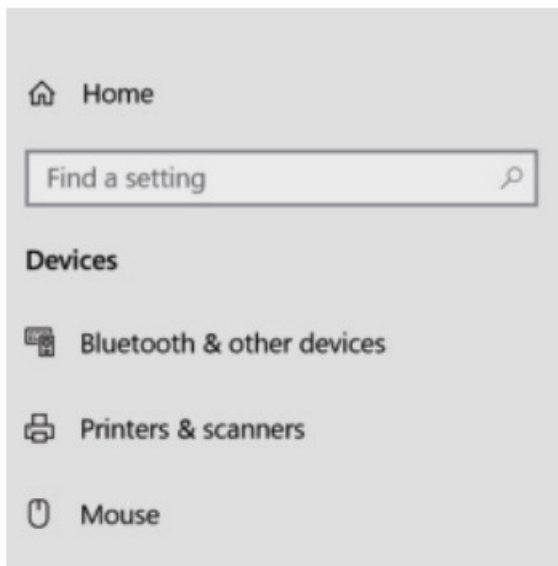


Part 2, Pair with Your Device via Bluetooth


1. Select the Bluetooth icon on the bottom right of our system's toolbar, then right-click to pull out a man bar. Click "Add a Bluetooth Device"



2. Look through and select the Bluetooth device you want to pair with, Dual click the "Device", the system will automatically start pairing, which means the pairing process is done, Fell free to personalize settings at Control Interface.



Bluetooth & other devices

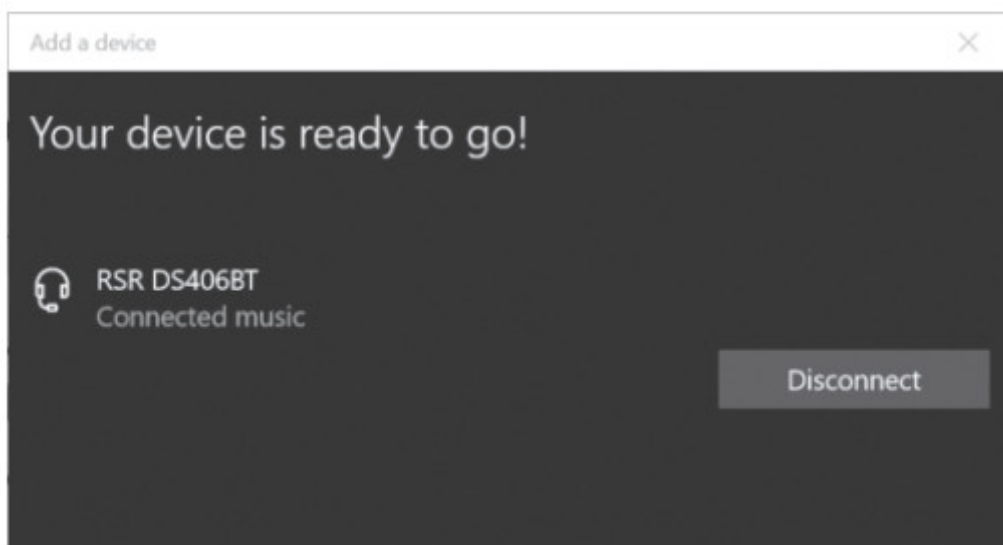
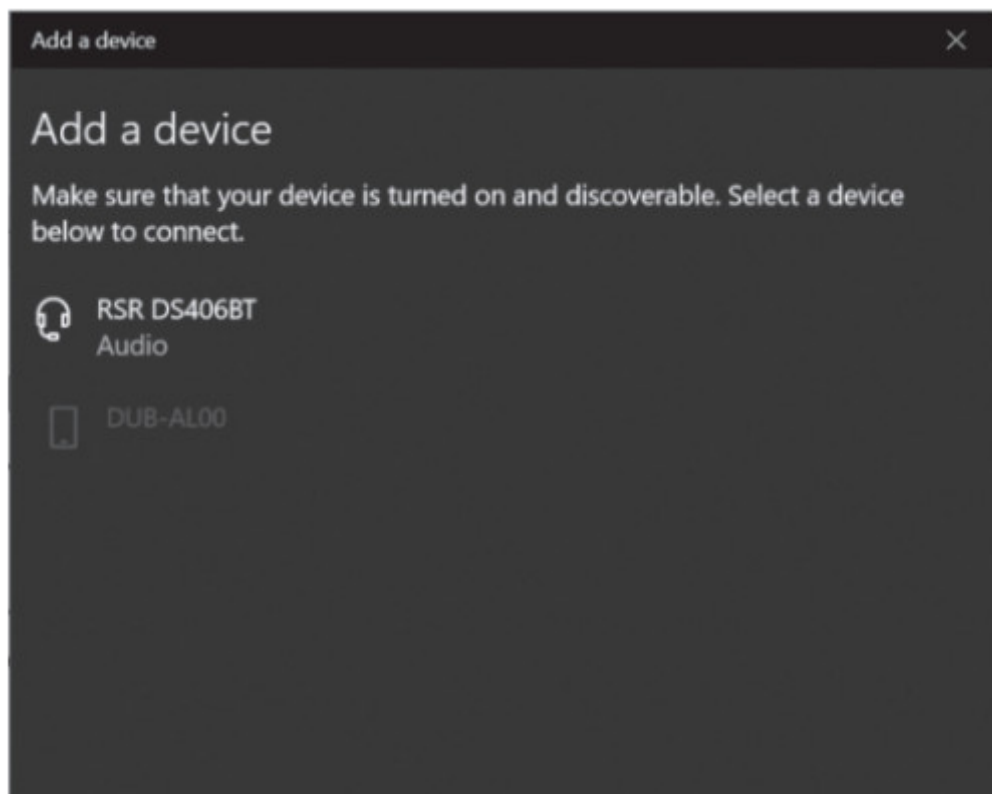
 Add Bluetooth or other device

Bluetooth

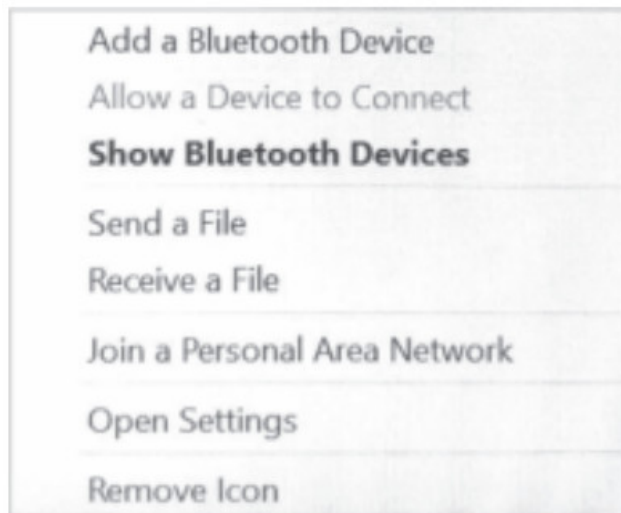
 On

Now discoverable as "DESKTOP-HUJH3G1"

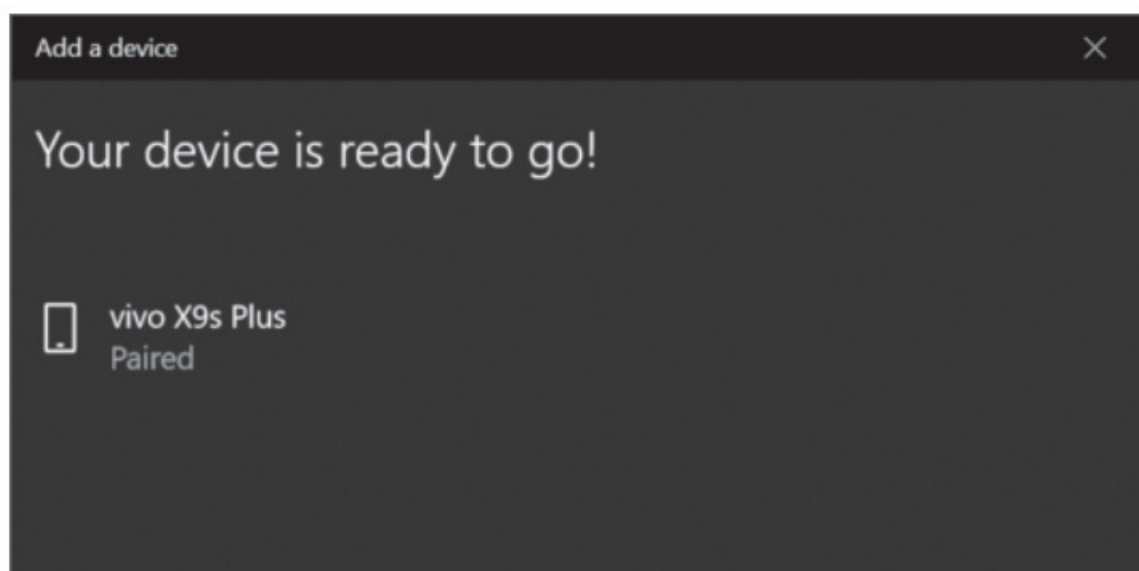
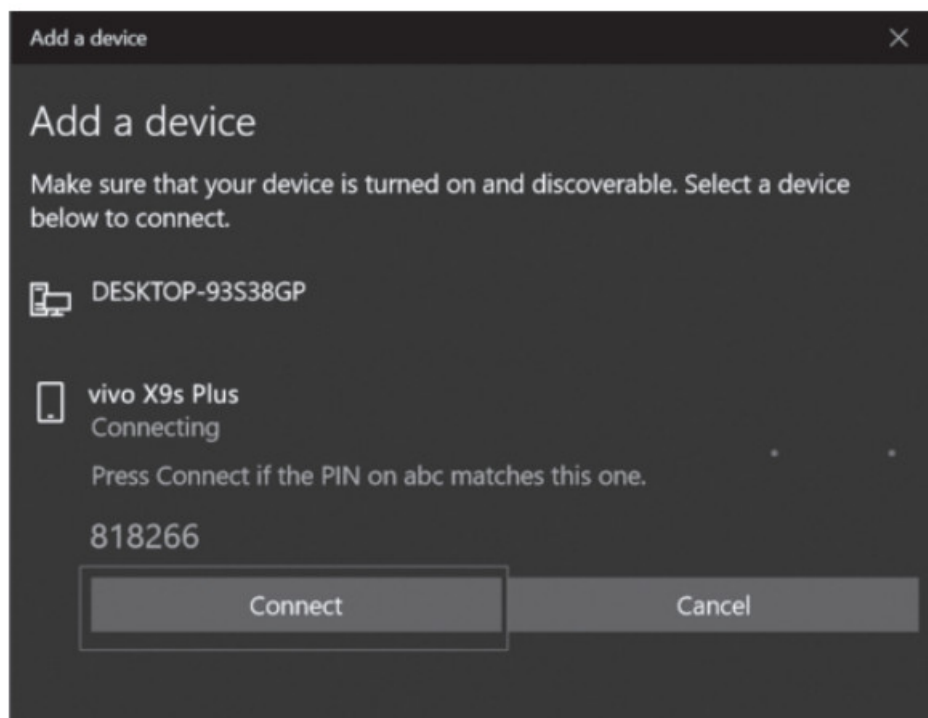
Audio



1. Click 'Add a Bluetooth Device'



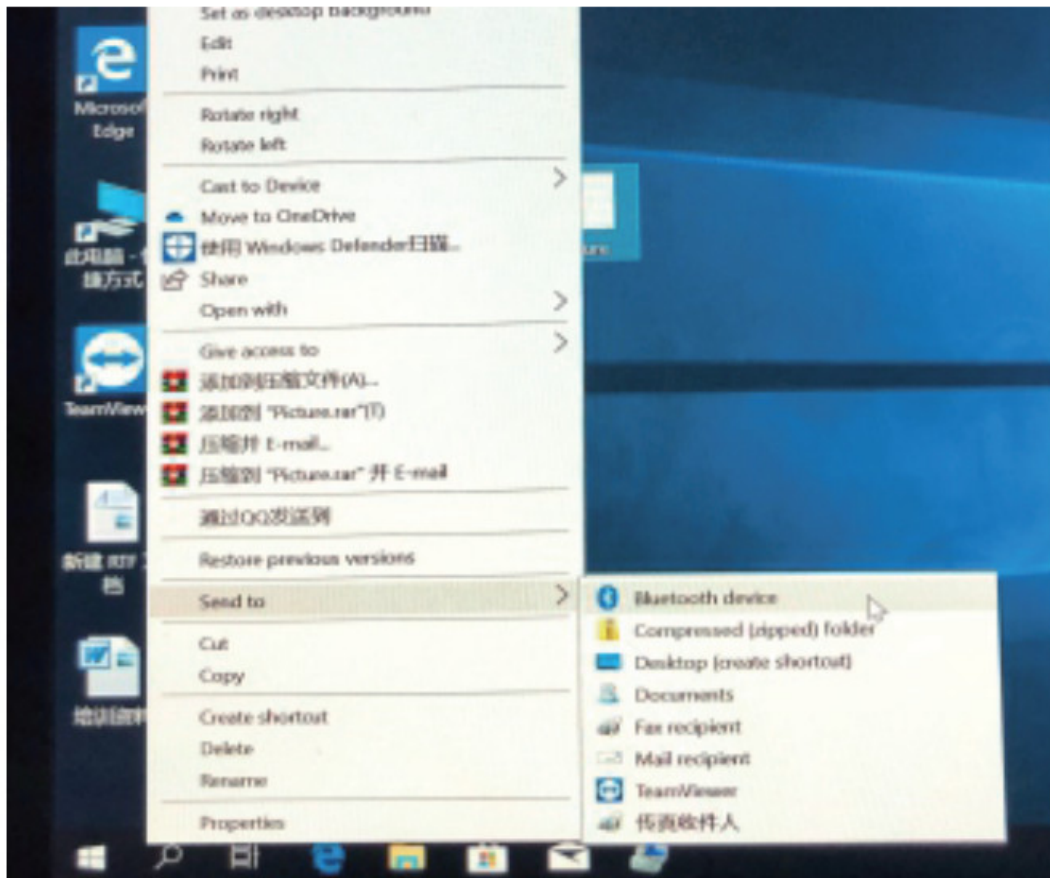
2. Look through and select the cell phone you want to pair with, system will start to pair by clicking "Next". At the same time, a code will pump up on both the system and cell phone, this is a certificate whether they are the right pairs or not. Click "Start to Pair" on your phone and "Next" on the computer to activate the pairing process.



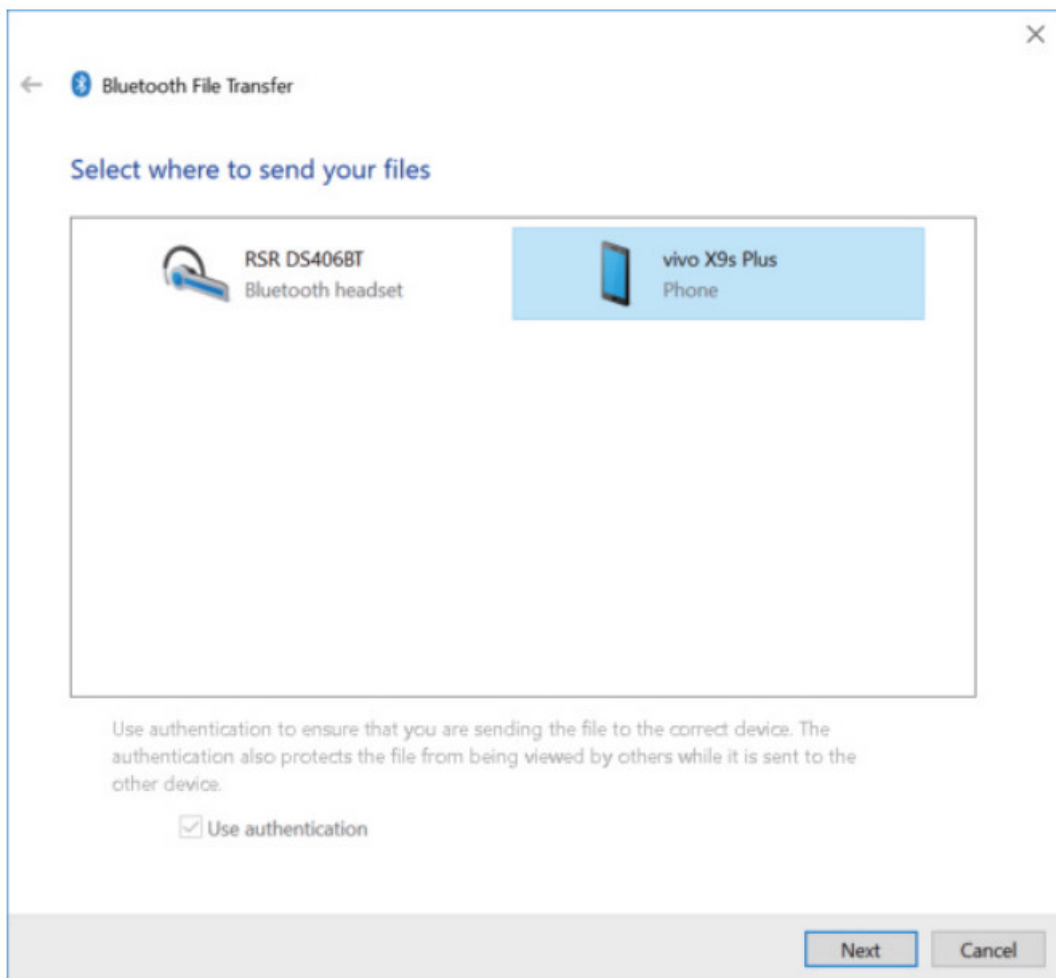
3. When it pumps out a dialogue that says "Your device is ready to go", that means the pairing process is done, Click "Done", Fell free to personalize the setting at Control Interface.

Part 4, Date Transfer

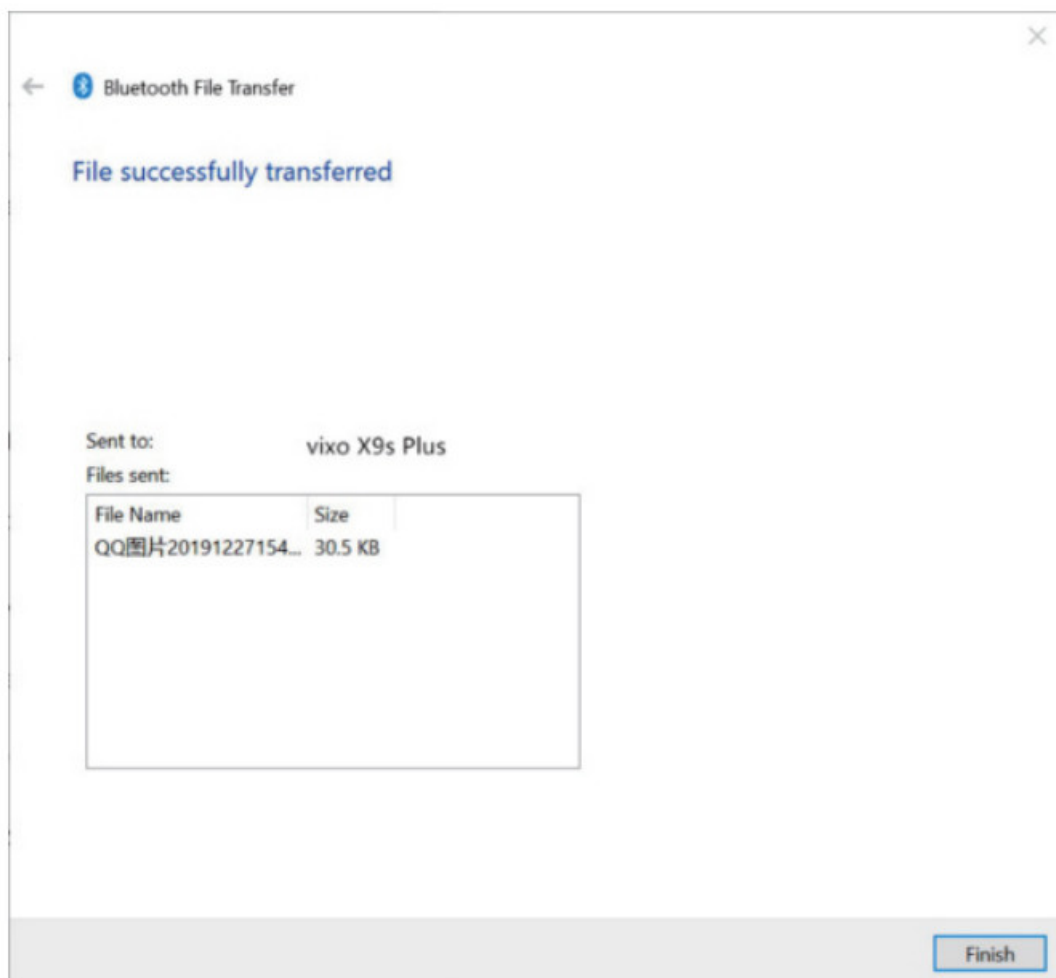
1. Right-click the file which you want to transfer and select "Send to Bluetooth Device".



2. Select a receiving device, support selecting multi-files simultaneously, here we take "Vivo X9s Plus" as an example, click "Next".



3. On your phone end click "Accept" to start data transfer



FCC Warning

This device complies with part 15 of the FCC Rules. Operation is subject to the following two conditions: (1) This device may not cause harmful interference, and (2) this device must accept any interference received, including interference that may cause undesired operation.

Any changes or modifications not expressly approved by the party responsible for compliance could void the user’s authority to operate the equipment.

Note: This equipment has been tested and found to comply with the limits for a Class B digital device, pursuant to part 15 of the FCC Rules. These limits are designed to provide reasonable protection against harmful interference in a residential installation. This equipment generates uses and can radiate radio frequency energy and, if not installed and used in accordance with the instructions, may cause harmful interference to radio communications. However, there is no guarantee that interference will not occur in a particular installation. If this equipment does cause harmful interference to radio or television reception, which can be determined by turning the equipment off and on, the user is encouraged to try to correct the interference by one or more of the following measures:

- Reorient or relocate the receiving antenna.
- Increase the separation between the equipment and receiver.
- Connect the equipment into an outlet on a circuit different from that to which the receiver is connected.
- Consult the dealer or an experienced radio/TV technician for help.

The device has been evaluated to meet general RF exposure requirements. The device can be used in portable exposure conditions without restriction.

72mm×80mm

Documents / Resources

	<p>EDUP EPB3519 Bluetooth Adapter [pdf] Installation Guide EPB3519, 2AHRD-EPB3519, 2AHRDEPB3519, EPB3519 Bluetooth Adapter, Bluetooth Adapter</p>
---	---