

EDUP 4G Mifi Router With LCD Display



EDUP 4G Mifi Router With LCD Display User Manual

[Home](#) » [EDUP](#) » EDUP 4G Mifi Router With LCD Display User Manual 

Contents

- [1 EDUP 4G Mifi Router With LCD Display](#)
- [2 Documents / Resources](#)
 - [2.1 References](#)
- [3 Related Posts](#)



EDUP 4G Mifi Router With LCD Display



Note: Different model with different housing, the picture on the manual is only for reference

Section 1 – Introduction:

Introduction

It is a portable 4G MiFi product that supports FDD-LTE/ TDD-LTE/ TD-SCDMA/ WCDMA/ GSM. User equipment can connect to the via WiFi or USB, enjoy a fast navigation experience.

This manual introduces the installation and usage of this equipment, all descriptions are based on the Windows 7 OS. For more details about the network connection, please consult your operator.

Specifications

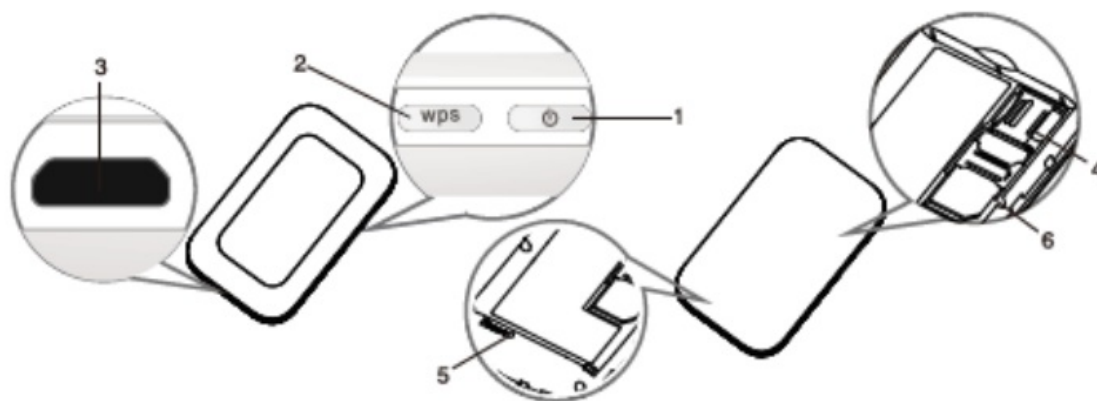
- FDD-LTE/ TDD-LTE/ TD-SCDMA/ WCDMA/ GSM supported
- Web sharing can support up to 8 users at the same time access
- 2100mAh battery, 6-8 hours working time
- Peak speed is as follows:

Support Network	Download	Upload
TDD-LTE	100Mbps	20Mbps
FDD-LTE	150Mbps	50Mbps@ 20M(CAT4)
WCDMA	21Mbps	5.76Mbps
EDGE	384Kbps	384Kbps

Package contents

- 4G MiFi Router X 1
- Battery X 1
- USB Cable X 1
- User Manual X 1

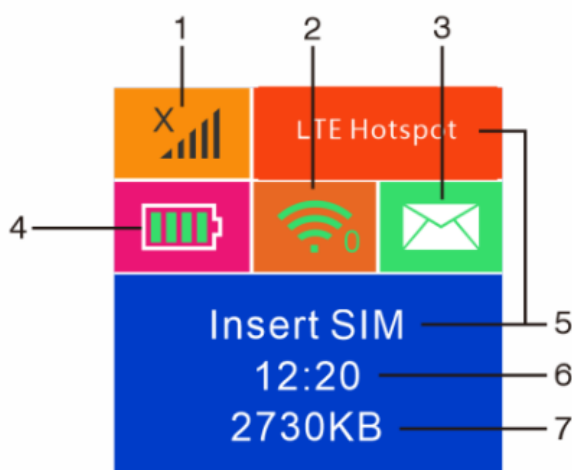
Description of components



Label & Name	Functions
1. Power Button	Press the Power Button to power on/ off the device. Wake the device during sleep mode
2. WPS Button	Open the WPS function, device AP-related information. Press the WPS button for 3 seconds to open the WPS function(PBC) Double-click to display the SSID and KEY information of the device AP
3. Charger/ USB Interface	Charger interface. USB interface between the device and Client Terminal
4. LCD Display	To instruct device conditions
5. LED Display	To instruct device conditions
6. TF Card Slots	Insert TF card
7. Reset Button	Press the Reset button for 3 seconds to restore factory settings

Description of the LCD Screen

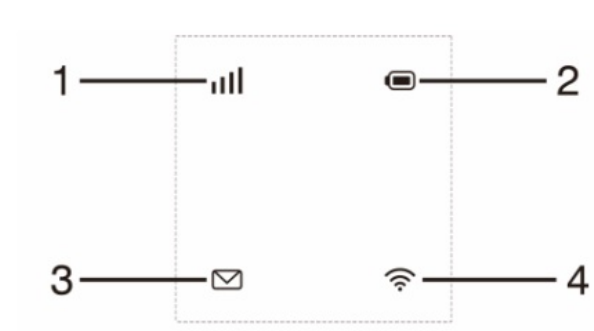
The LCD display should be as followed after Power ON/ OFF:



Label	Instruction
1	Web signal strength
2	WIFI ON; Number of the WIFI clients
3	SMS indication
4	Battery Capacity
5	Operator
6	Network online time
7	Data Usage

Description of the LED Screen

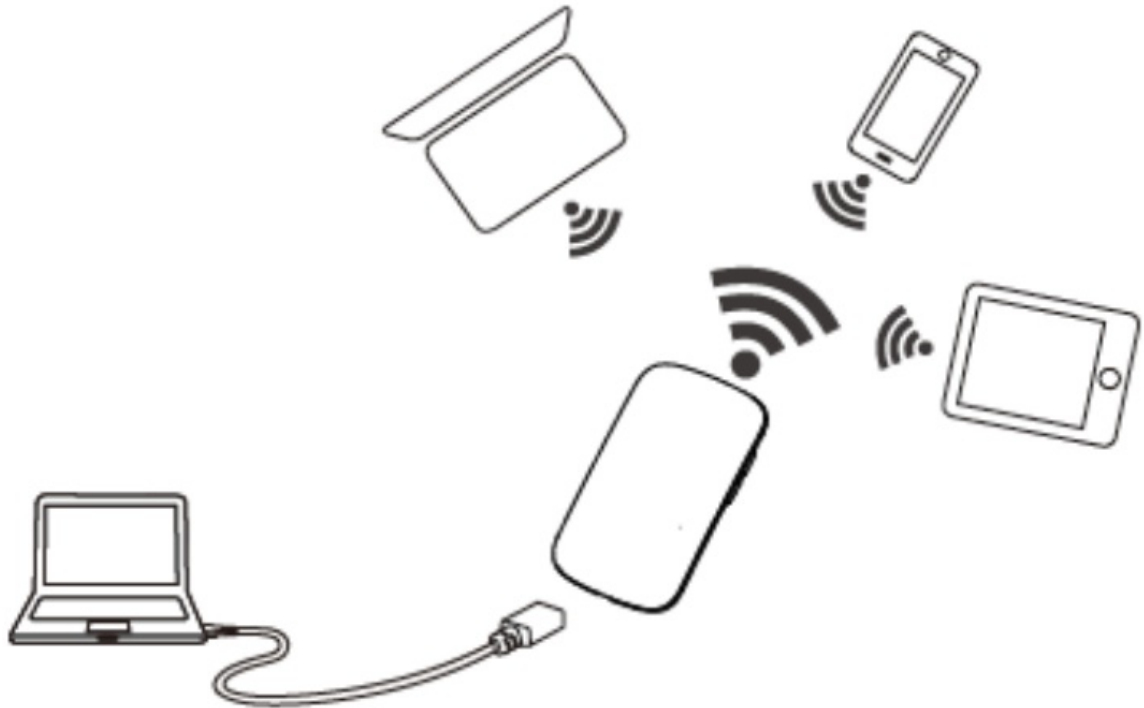
The LED display should be as followed after Power ON/ OFF:



LED indicator information	Instruction
1. Signal Indicator	Red light flashing means the signal is unstable Green light flashing means the signal good
2. Electrical Voltage Indicator	Red light flashing means power lower than 20% Yellow light always on means power over 20% Yellow lights flashing means charging
3. SMS indicator	Light on/Flashing means there is text message Light off means no text message
4. WiFi indicator	Light off means no signal Light on means WiFi works fine

Application Scene

This equipment can support Windows XP, Vista, Win7, Win10, Mac OS etc, and can support multiple connections via WIFI or USB at the same time. Below diagram is only for reference.



NOTE: Before using of the WIFI connection, please make sure the client device supports the WiFi.

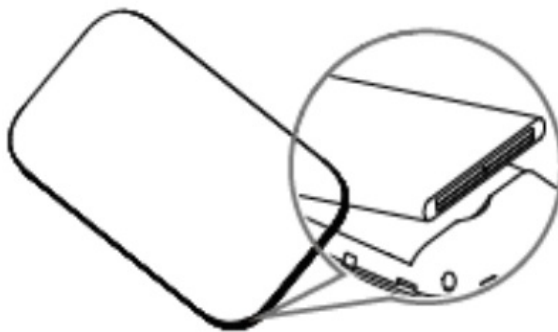
Sleep Mode

When the equipment is in WAN and battery mode and no devices are connected to the equipment for a certain time, the equipment will enter sleep mode.

Section 2 – Installation Instructions:

Installation of the Micro-SIM card, TF card and Battery

1. At the arrow position of the indentation on the drawing below, push to open the back of the equipment, and remove it.
2. Put the Micro-SIM card and TF card into the slot, be mindful of the direction.
3. Put the battery in as the drawing shows.
4. Put the cover back on the equipment and close it.



Power ON/ OFF

- **Power ON:** Long press the POWER Button, turn on the device, the LCD will light up
- **Power OFF:** Long press the POWER Button to turn the device off.

Charging

The equipment can be charged via either a charger or a USB port. The method to charge is as follows:

1. Use the USB cable to connect the computer or other equipment.
2. Use the charger to connect a USB power source to the device.



NOTE: The normal usage will not be affected during charging. Section 3 – Connecting to a Device

Via USB cable

The steps are as follows:

1. Power ON the device. This chapter will introduce two methods to build the connection.



2. Use USB cable to connect the device and the client(click to close the auto play popup).
3. Choose the required language.
4. Follow the system instructions to finish the installation(skip this step for driverless version).
5. The connection between the device and client will be made successfully.

Remark

1. Through USB connection the client is not included in the total access users.
2. If the system does not support automatic installation, please run the Driver Setup. exe program in My Computer> CD-ROM drive to start software installation.
3. After the software installs the CD-ROM drive successfully, the device driver will be installed successfully at the same time. Afterward,the device manager will show:

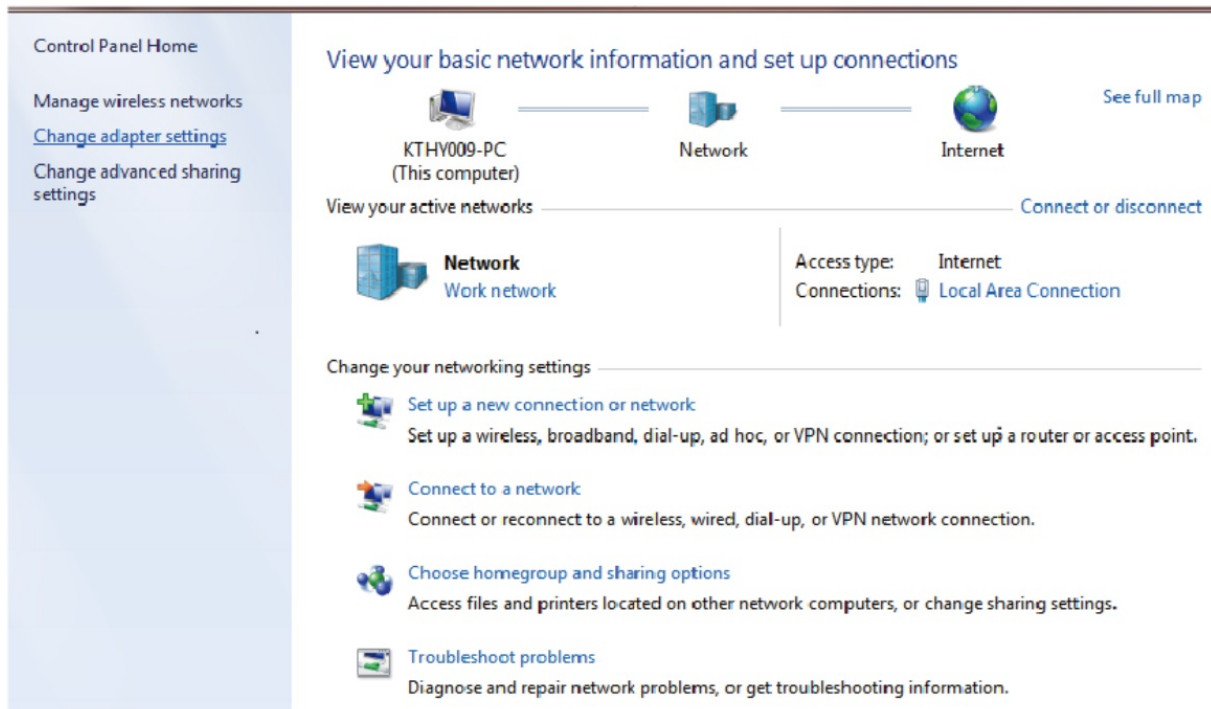


Via Wi-Fi

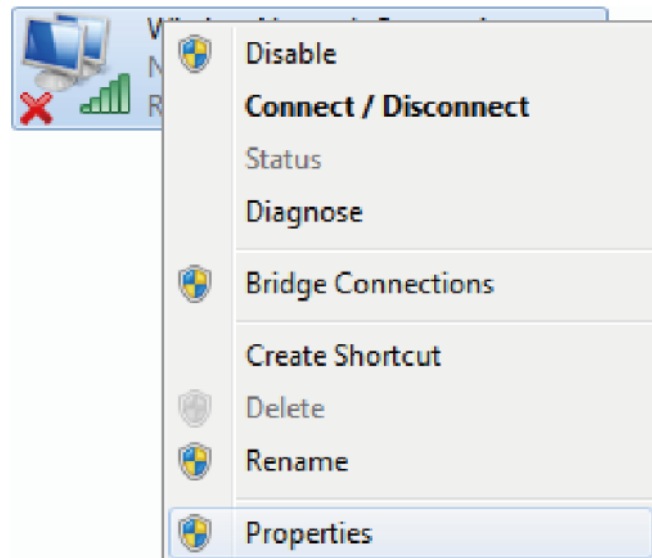
Password access

The following is an example with basic steps.

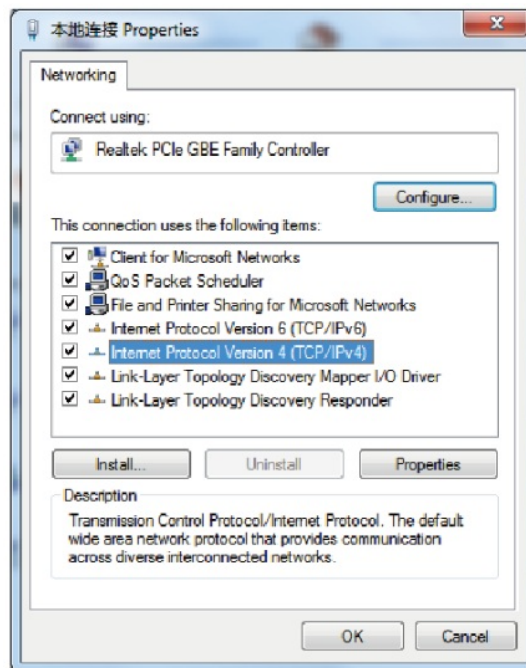
1. Turn on the device, and wait for 1~2 minutes till the device initialization is completed.
2. Please configure the computer. The steps to configure Wi-Fi is as follows:
 - Click Start, and then click Control Panel.
 - Click Network and Internet, then click "View your basic network information" and set up connections.



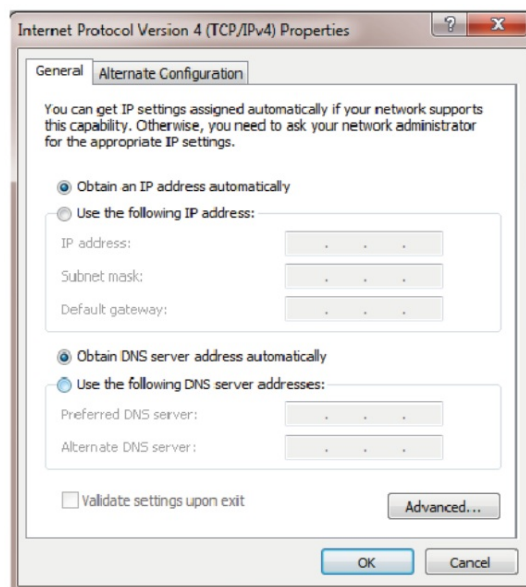
- Right-click on Local Connection, choose Properties.



- Click Internet Protocol (TCP/ IP), choose Properties.



- Choose Internet Protocol Version 4, then click Properties.
- Select Obtain an IP Address Automatically and Obtain DNS Server Address Automatically, click Confirm to complete the configuration.



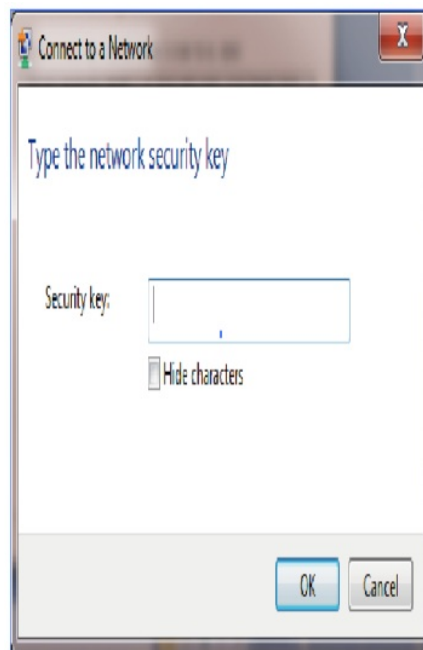
3. After completion of the computer configuration, choose the network icon in the taskbar selected.



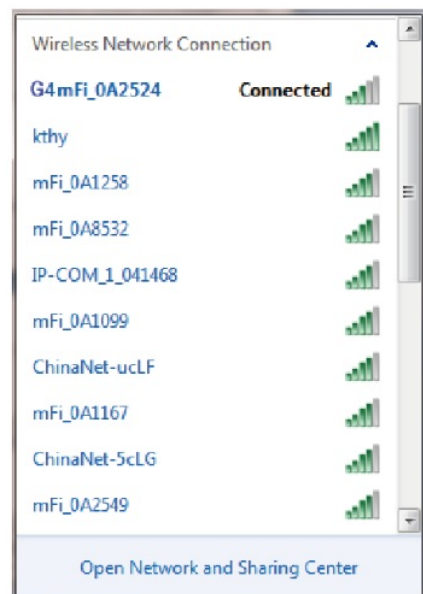
4. Select the corresponding SSID of the device, and click Connect.



5. Enter the key (1234567890) and click Connect.



6. Later, the Click Terminal will automatically connect to your device.



Via WPS Function

If the client supports WPS, please follow these steps:

1. Turn on the device and WIFI.
2. Long Press WPS Button for 3 seconds to enable WPS functionality.
3. Open the client WPS function so that WPS is on for both devices.
4. Follow the client system prompts to complete the connection.

Remark

1. About the client WPS process operation, please refer to the client's instructions.
2. WPS function will automatically shut down after 2 minutes, if you need a connection to be established through the WPS, please press the WPS button again.

How to obtain the SSID and password

The SSID and password of the devices will be posted on the label as normal, if not you can obtain the SSID and password through the way as below.

1. Obtain via Web Enter to the Web UI, Enter to settings WLAN settings — Basic settings, you will see the information of SSID and KEY.
2. Double click the WPS Button
3. Double click the device WPS Button, you can see the information of SSID and KEY on the LCD.

Section 4 – Managing the Web UI page

Web UI management interface can help users to manage the device effectively. This chapter will show you how to manage the page.

Login

1. Enable the connection between Client Terminal and the device.
2. Start the browser, Enter `http://192.168.0.1` into the web page in the address bar.
3. In the subsequent pop-up login window, enter the default password "admin", and click Login, you can enter the Web UI management page.

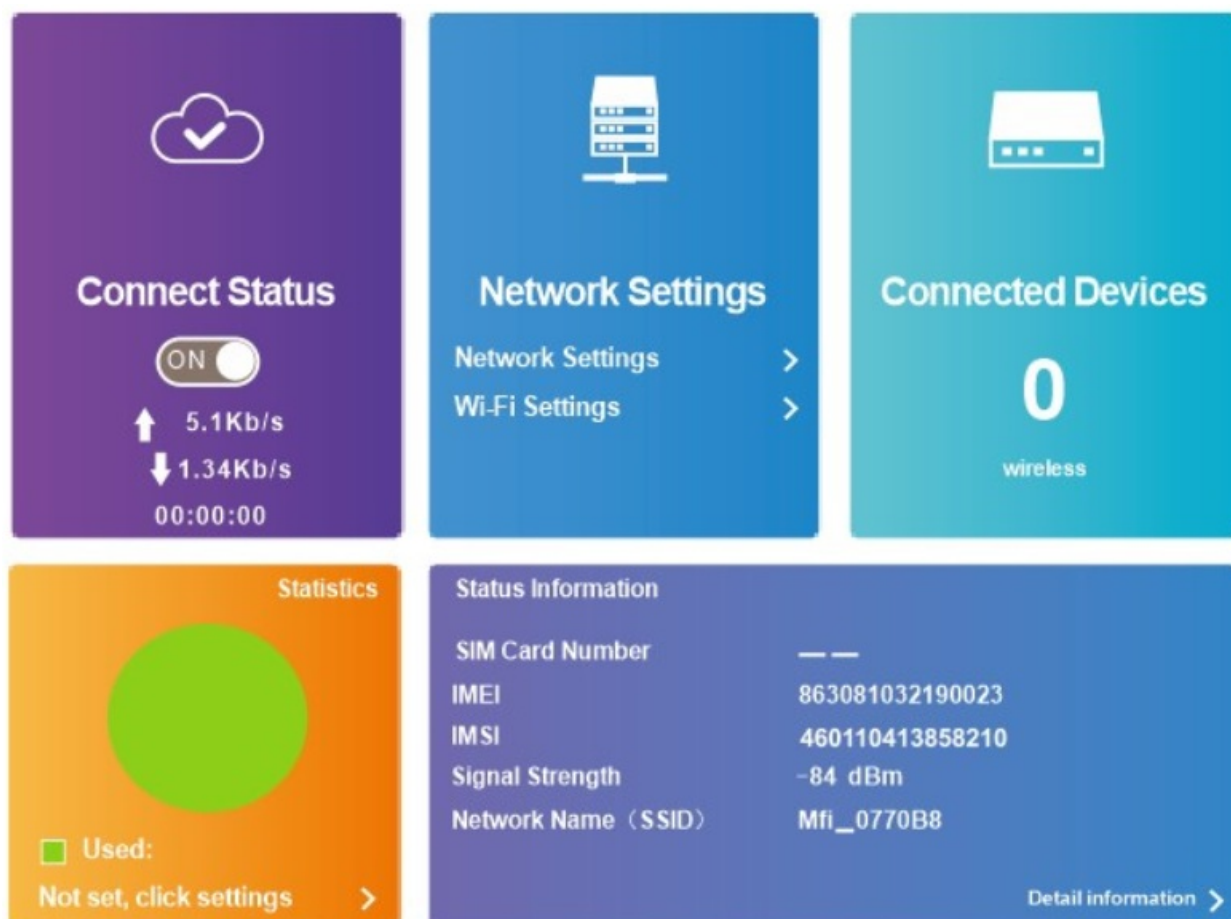


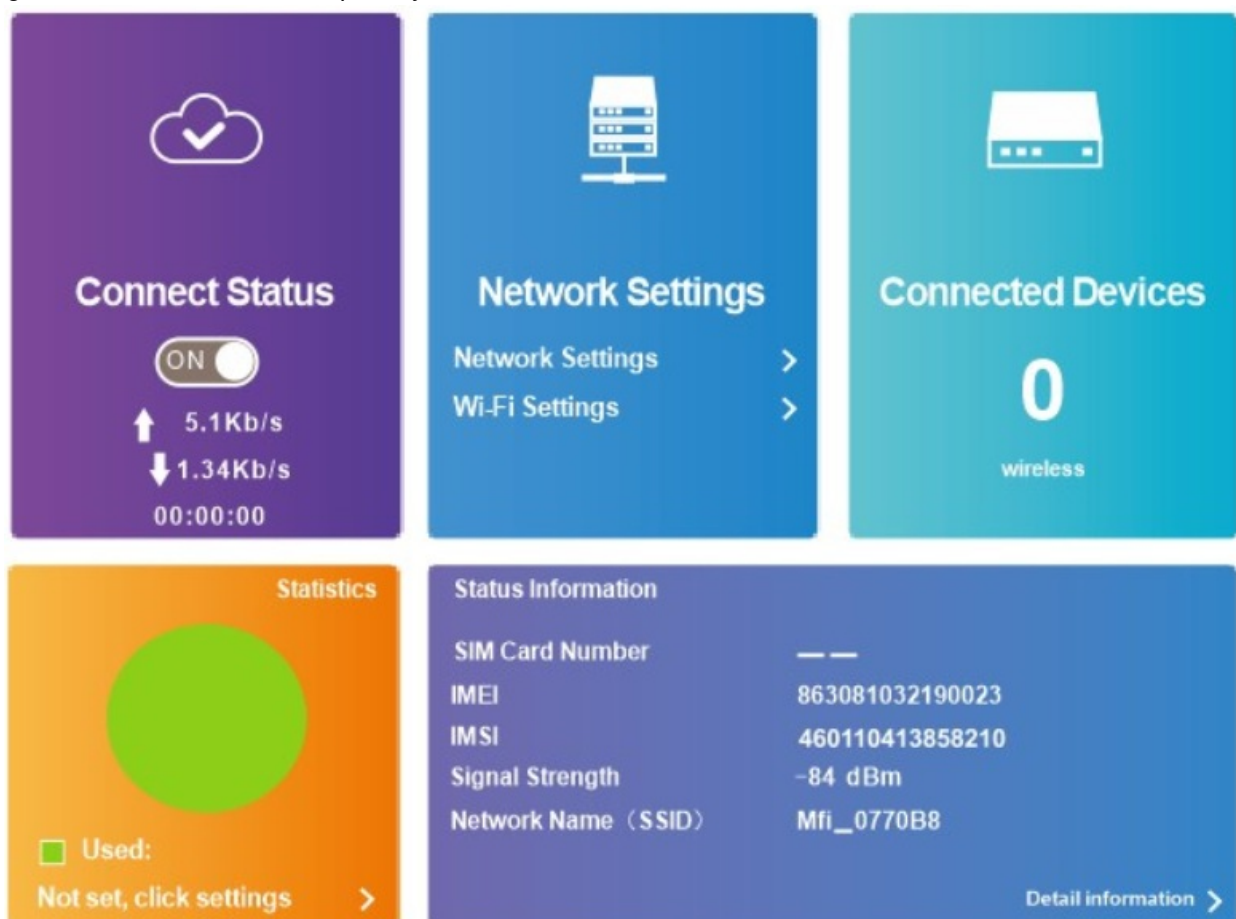
A login form with a white background and a thin grey border. It contains a text input field with the placeholder text "Password" and a blue button with the text "Login".

4. Remark: you are advised to use the following browsers: IE (7.0 or higher), Firefox (3.0 or higher), Opera (10.0 or higher), Safari (4.0 or higher) or Chrome (5.0 or higher),

Web UI Introduction

Home The Home page is as bellow:





SMS

Device SMS

In the device section of SMS pages you will see, delete, refresh options displayed message in the new message where one can add up to 5 telephone numbers.



SIM SMS

In the SIM side of the SMS p age, you will have the option to delete SMS's.



SMS Settings

On the SIM settings page you can enable or disable delivery reports.

<

SMS Settings

Device

SIM Card

Settings

SMS Settings

Validity

Maximum

Center Number *

+318540942000

Delivery Report

Enable

Disable

Apply

Phonebook
On this page you will find phone contacts, new text, delete, etc. options. You can add 600 telephone numbers.

List

FDD-LTE China Telecom

Modify Login Password Logout English

<

Phonebook (0/600)

List

New

Send

Delete

Q Search

x

All

Name

Save Location

Mobile Number

Group

New

FDD-LTE China Telecom

Modify Login Password Logout English

<

Phonebook (0/600)

List

New

Send

Delete

Q Search

x

All

Name

Save Location

Mobile Number

Group

Advanced Settings

Power saving

Advanced settings page includes WIFI performance settings and WIFI sleep settings, as shown below.

FDD-LTE

China Telecom

Modify Login Password

Logout

English

<

Advanced Settings

Power-save

Router

Firewall

Update

USSD

DDNS

Others

Wi-Fi Performance Settings

Wi-Fi Coverage

Short Wi-Fi Coverage - Best battery life

Medium Wi-Fi Coverage

Long Wi-Fi Coverage

Apply

?

Wi-Fi Sleep

Sleep after

10 Minutes

Apply

?

Router

The router settings interface can be set to view the IP address, subnet mask, MAC address. Enable or disable the DHCP servicesettings view DHCP IP pool, DHCP lease, as shown below.

FDD-LTE China Telecom

Modify Login Password Logout English

<

Advanced Settings

Power-save

Router

Firewall

Update

USSD

DDNS

Others

Router

IP Address *

192.168.0.1

Subnet Mask *

255.255.255.0

DHCP Server

☒ Enable ☐ Disable

DHCP IP Pool *

192.168.0.100

DHCP Lease Time *

24

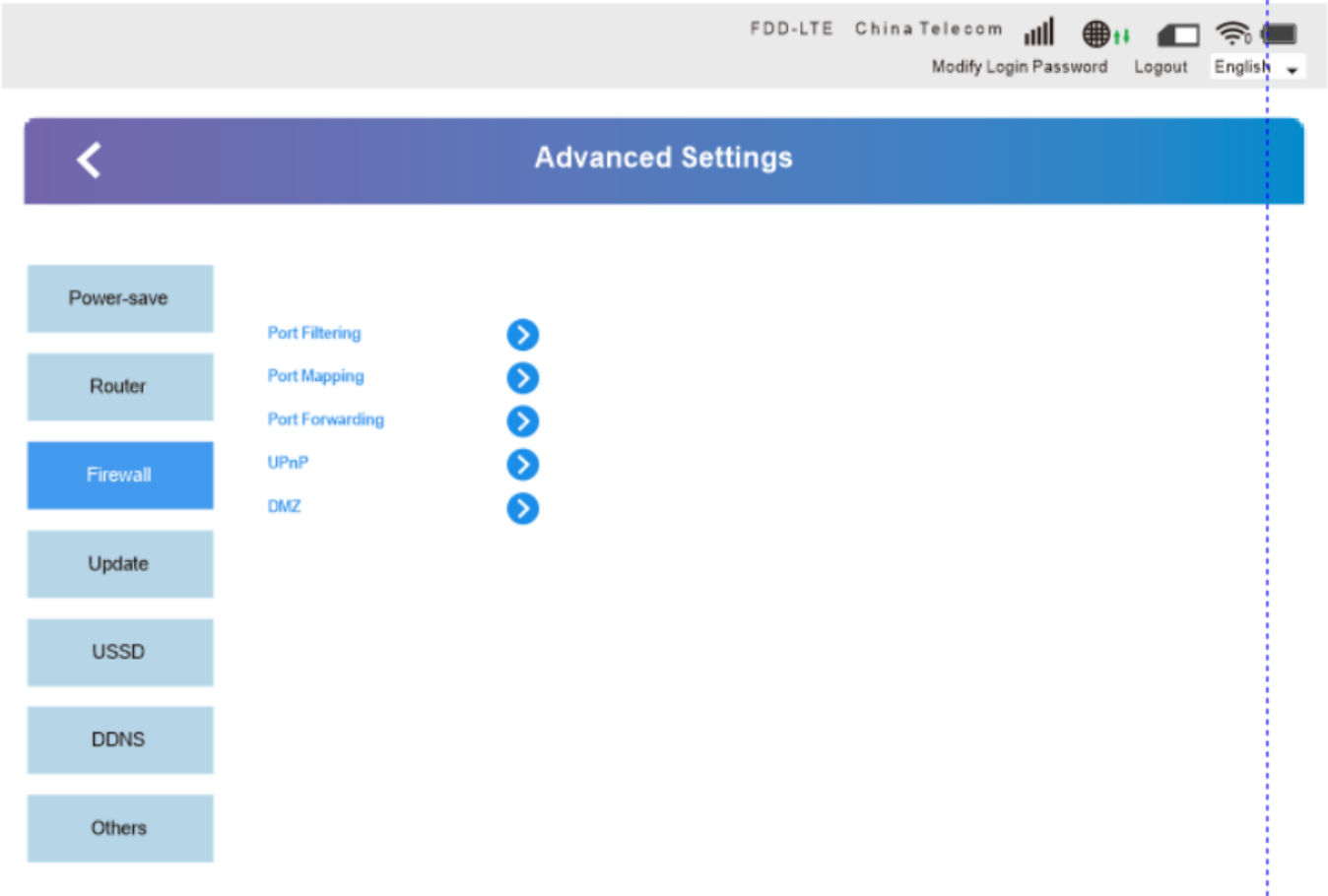
hour(s)

?

Apply

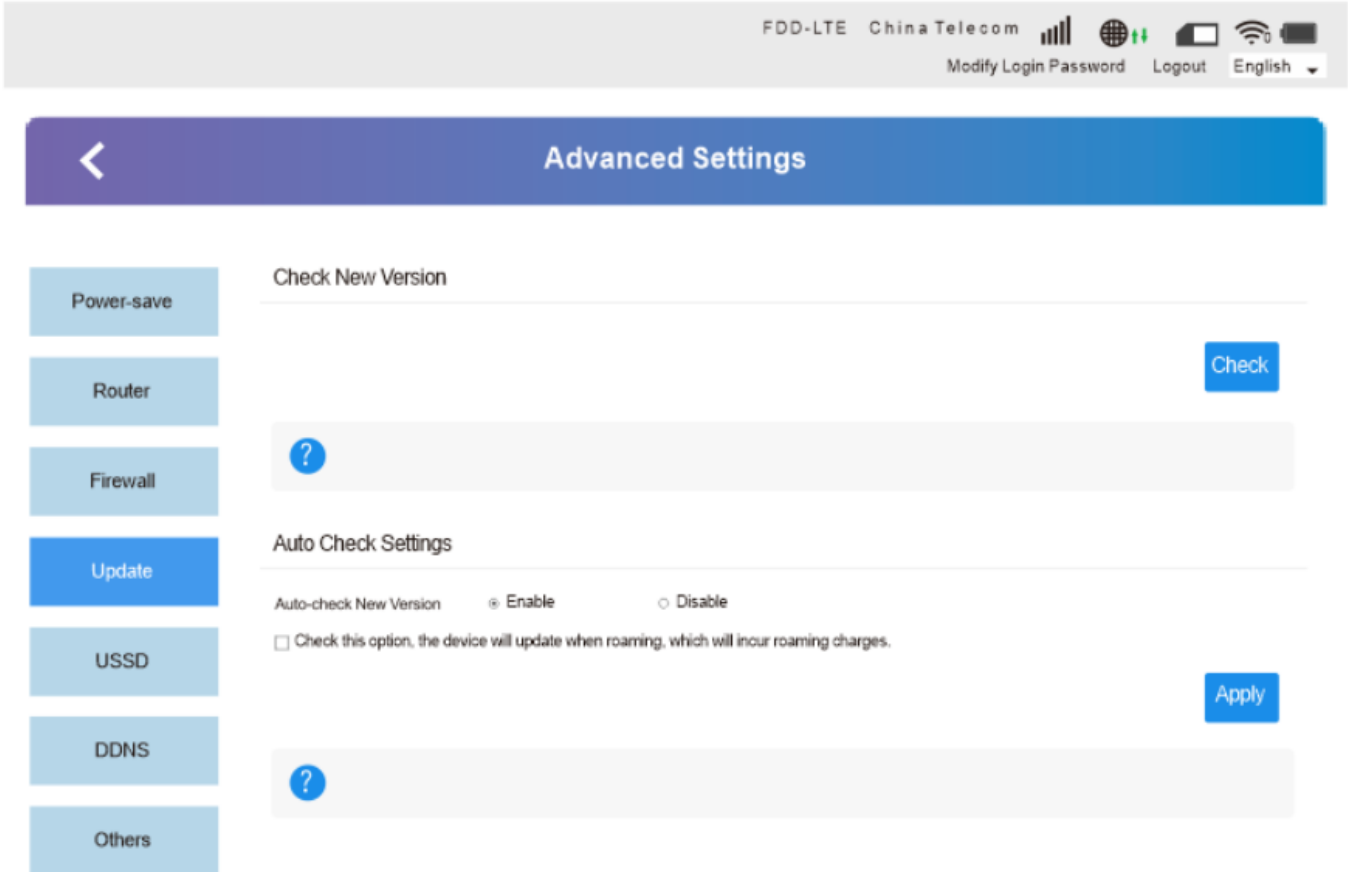
Firewall

Setting up a firewall can protect the network from network viruses, worms, and malicious network attacks, making the operation of the equipment in the network secure.

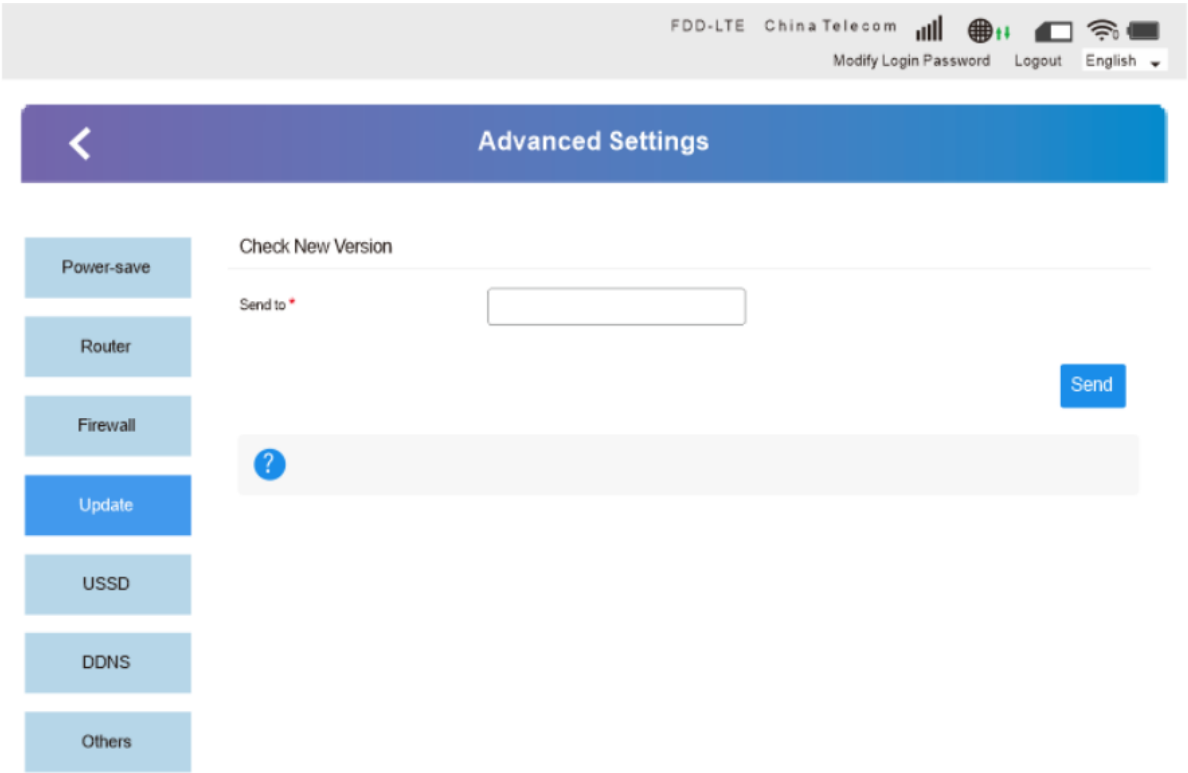


Update

Update interface settings can be set up to detect new versions of the firmware automatically.

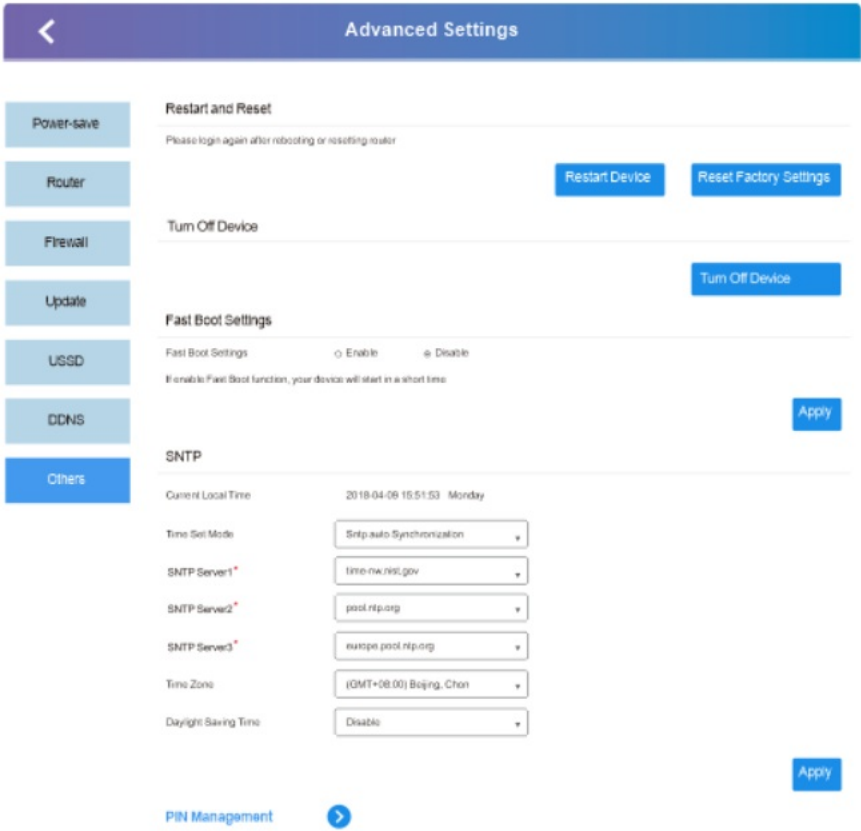


USSD



Other settings

Other settings interface, including reset and reset, shutdown, fast boot settings, PIN, SNTP code management.



PIN Management

You can setup a PIN Code and enable or disable it on the security settings page.

Remark

1. To change the PIN, please disconnect on the front page.
2. For detailed information about the SIM card, please consult the user s network provider.
3. For the PIN, the maximum chances to enter it correctly is 3 times, PUK code number can be entered incorrectly a maximum of 10 times.
4. Continuous input three times with one PIN, SIM card will be locked, you need to enter the PUK to unlock once this happens.

The screenshot shows the 'PIN Management' screen. At the top, there's a status bar with 'FDD-LTE China Telecom' and various icons. Below it, a blue header bar contains a back arrow and the title 'PIN Management'. The main content area has a 'PIN Status' section with 'Enable' and 'Disable' radio buttons. To the right is a 'Change PIN' button. Below this is a 'Current PIN' label with a red asterisk, followed by a text input field. Under the input field, it says 'Attempts Left: 3'. To the right of the input field is an 'Apply' button. At the bottom, there's a light gray bar with a blue question mark icon.

Once the PIN is enabled, restart your device log into Web UI and enter the PIN code management interface to change PIN settings.

Quick Settings

On this pag,, you can set up basic parameters.

APN Settings

The screenshot shows the 'Quick Settings' screen. At the top, there's a status bar with 'FDD-LTE China Telecom' and various icons. Below it, a blue header bar contains a back arrow and the title 'Quick Settings'. Below the header, there's a paragraph of text: 'The wizard will show you how to set up basic parameters of gateway safely: Click "Previous" & "Next" to navigate, and click "Apply" to save settings. For advanced parameters, set them in other menu.' To the right of this text is a 'Next' button. Below the text, there's a section titled 'APN Settings' with two radio buttons: 'Auto' (selected) and 'Manual'. At the bottom, there's a light gray bar with a blue question mark icon.

SSID

The SSID page can be used to turn SSID broadcastt ing on or off and allows you change the network name (SSID).

FDD-LTE China Telecom

Modify Login Password Logout English

<

Quick Settings

The wizard will show you how to set up basic parameters of gateway safely: Click "Previous" & "Next" to navigate, and click "Apply" to save settings. For advanced parameters, set them in other menu.

PreviousNext

SSID

Network Name (SSID) *

mFL00D2B1

SSID Broadcast

☒ Enable ☐ Disable

?

Click next to enter the security mode settings interface

Security Mode

FDD-LTE China Telecom

Modify Login Password Logout English

<

Quick Settings

The wizard will show you how to set up basic parameters of gateway safely: Click "Previous" & "Next" to navigate, and click "Apply" to save settings. For advanced parameters, set them in other menu.

PreviousNext

Security Mode

Security Mode

WPA2 (AES) - PSK

Pass Phrase *

☐ Display Password

Please input at least 8 characters

?

Click next to enter the device configuration settings

Configuration As Follows



Quick Settings

The wizard will show you how to set up basic parameters of gateway safely. Click "Previous" & "Next" to navigate, and click "Apply" to save settings. For advanced parameters, set them in other menu.

[Previous](#)[Apply](#)

Configuration as Follows

APN Settings	Auto
Network Name(SSID)	mFI_0CD2B1
Broadcast Network Name (SSID)	Enable
Security Mode	WPA2 (AES) - PSK

Network Settings

The network settings interface includes network connection and wireless network settings.

1. Connection Mode
2. In the connection mode interface, there are two optional connection modes: automatic and manual.



Connection Settings

[Connection Mode](#)[Network Selection](#)[APN](#)

Connection Mode

Connection Mode

☒ Automatic ☐ Manual

☒ Check here, you can connect to internet in the roaming status.

[Apply](#)

Network Selection

In most circumstances, you can use the automatic network configuration settings for your device. If the automatic network configuration is un sucessfully, please select manual configuration.

Connection Settings

Connection Mode

Network Selection

Network Selection

⊙ Automatic

Automatic

○ Manual

Network Selection

APN

APN

In automatic mode, the relevant information on the APN will be automatically adapted according to the inserted SIM card.



Connection Settings

Connection Mode

APN

Current APN

China Telecom 4G

Mode

Ⓢ Auto

- Manual

Profile

China Telecom 4G

PDP Type

☐ ipv4

Profile Name

China Telecom 4G

APN

ctnet

Authentication

PAP

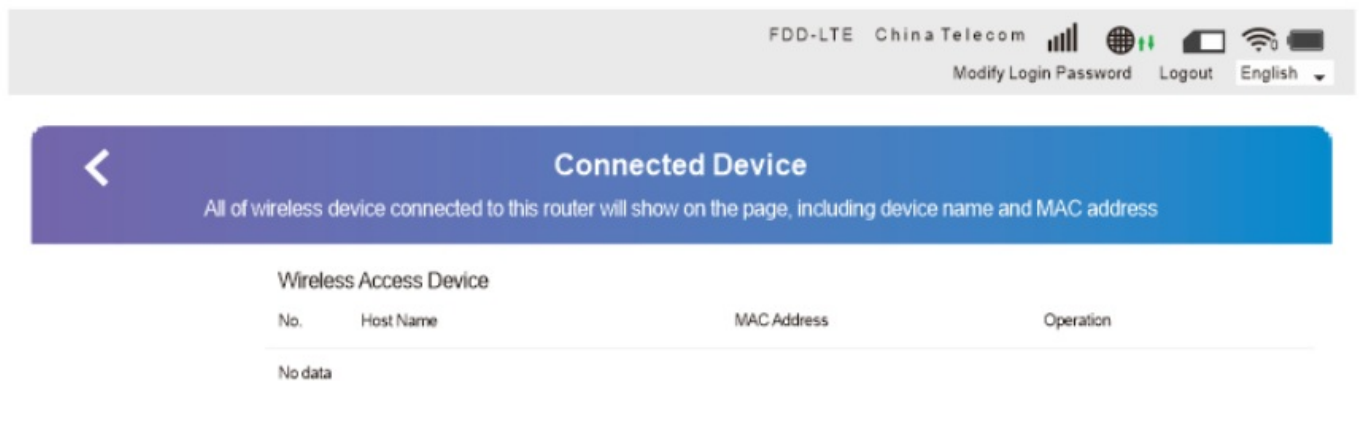
User Name

Password

Dial No.

Connected device

The access quantity interface displays all the wireless terminals connected to the router, including the device name of the wireless terminal, and the MAC (medium access control) address.

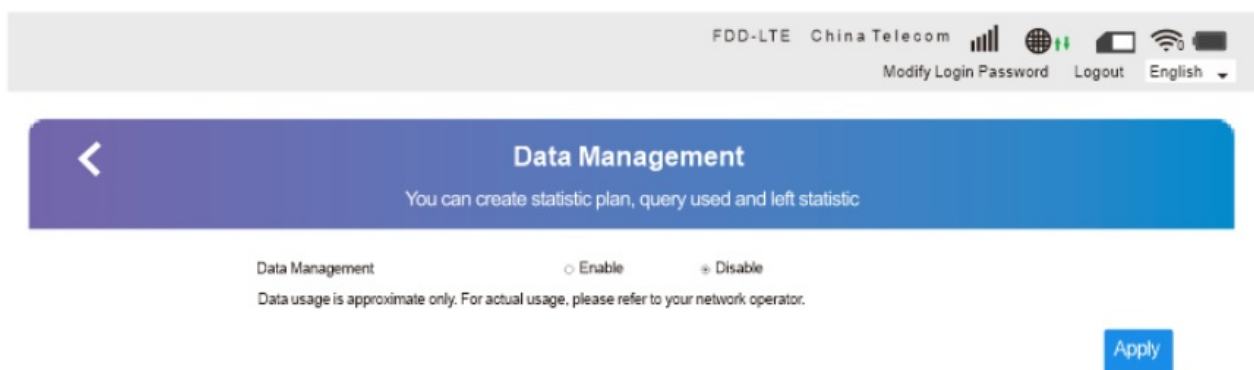


Statistics

The page includes traffic statistics and flow package settings.

Data Management

The flow management interface can create a flow plan, the query has been s ed, an d the rest of the flow.



Status Information

The device information displayed on the page is the software version, firmware version, hardware version, IMEI number, signal strength, etc.



Documents / Resources

<p>4G LTE MIFI ROUTER USER MANUAL</p>	<p>EDUP 4G Mifi Router With LCD Display [pdf] User Manual 4G Mifi Router With LCD Display, 4G, Mifi Router With LCD Display, Router With LCD Display, With LCD Display, LCD Display, Display</p>
---	--

References

- [User Manual](#)

[Manuals+](#), [Privacy Policy](#)

This website is an independent publication and is neither affiliated with nor endorsed by any of the trademark owners. The "Bluetooth®" word mark and logos are registered trademarks owned by Bluetooth SIG, Inc. The "Wi-Fi®" word mark and logos are registered trademarks owned by the Wi-Fi Alliance. Any use of these marks on this website does not imply any affiliation with or endorsement.