



# Edmax Technology STC07 Face Recognition Temperature Measuring Terminal User Manual

[Home](#) » [Edmax Technology](#) » Edmax Technology STC07 Face Recognition Temperature Measuring Terminal User Manual 

Edmax Technology STC07 Face Recognition Temperature  
Measuring Terminal User Manual

## User Manual of Face Recognition Temperature Measuring Terminal

- Contents
- 1

Model
- 2

Product specifications
- 3

Interface Description
- 4

Installation method
- 5

Maintenance and maintenance
- 6

Warranty Card
- 7

Warning
- 8

Documents / Resources
- 9

Related Posts

### Model

☐ DM1071-T

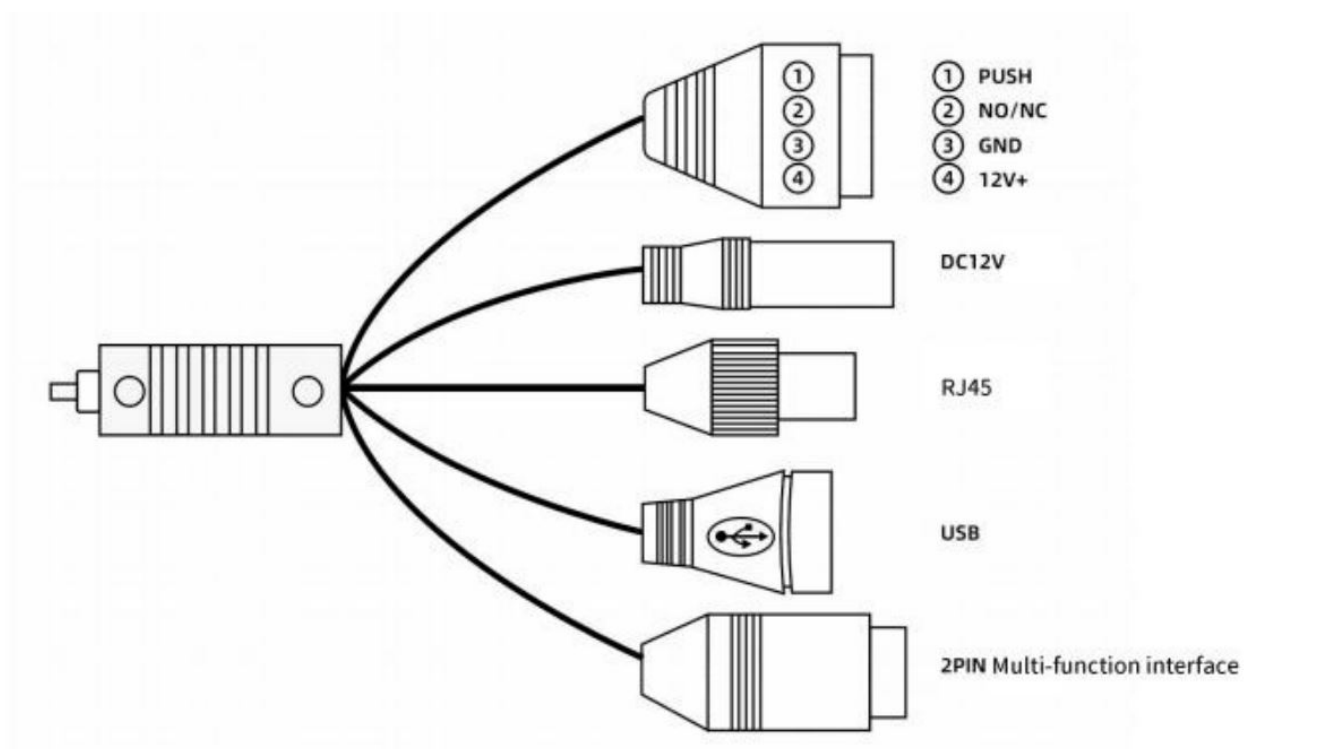
☐ \_\_\_\_\_

### Product specifications

Basic parameters	Soc	High-performance AI SoC (4-core A7 + NPU + DSP)
	Memory	1GB DDR3
	Storage	EMMC 8GB
Identification requirements	Recognize height	1.2 ~ 2.2 meters, adjustable angle
	Recognition distance	0.5 ~ 1.2 meters
	Face angle	30 degrees left and right, 30 degrees up and down
Face recognition	Face recognition accuracy	99.99% (1:1, FRR 1%)
	Living body detection	Support
	Recognition speed	<300ms (20000 face library)
	Face Library	default 20000, maximum 50000
	1: 1 face comparison	Support
	1: N face search	Support
Infrared thermal imaging module	Temperature measurement accuracy	$\leq \pm 0.3^{\circ}\text{C}$
	Temperature measurement range	20°C~45°C
	Total pixels	120*90, 10800
Alarm	Abnormal body temperature alarm	Support (body temperature alarm threshold can be set)
	Alarm without a mask	Support (can be set)
Internet	LAN	RJ45, 100M
	Wi-Fi	2.4G,802.11b/g/n

Screen	Size	7 inch LCD screen
	Resolution	600*1024
Camera	Resolution	2 million
	Type	120DB ultra-wide dynamic binocular camera
	Fill light	Built-in fill light, no fear of backlight, dark light environment
Interface	Power supply	DC 12V
	Internet	1 RJ45 10M / 100M adaptive Ethernet port
	USB	1 USB 2.0 interface
	Lock control	1 channel lock control signal
	Optional	1 interface, optional RS232 / UART
Electrical parameters	Voltage	DC 12V
	Electric current	500mA
	Power	15W
	Operating temperature	20~35°C
	Storage temperature	-25~60°C
Packing List	Host *1, power adapter *1, power adapter *3 (American standard, British standard, European standard), screws *8, certificate of conformity *1	

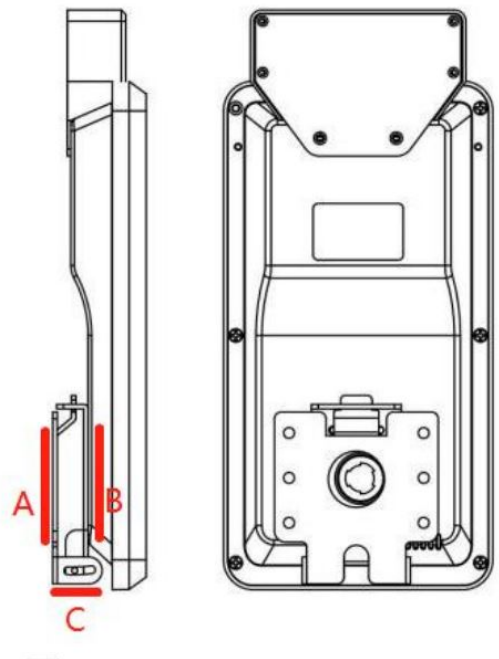
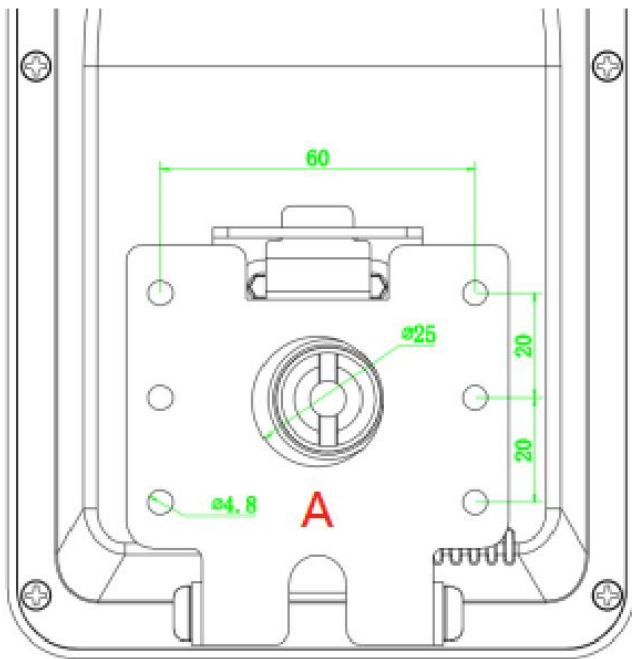
## Interface Description



Line group	Function group	Line sequence	Terminal name
A	4 pin	Lock control signal	1 PUSH_OUT
			2 LOCK_NONC_12V
			3 GND
			4 12V OUT
B	5.5mm Round socket	power supply	1 12V in
			2 GND
C	RJ45	Ethernet	1 Ethernet
D	TypeA USB socket	USB Host	1 5V
			2 DN
			3 DP
			4 GND
E	2 pin	Optional RS232 / UART	1 D0 / TX
			2 D1 / RX

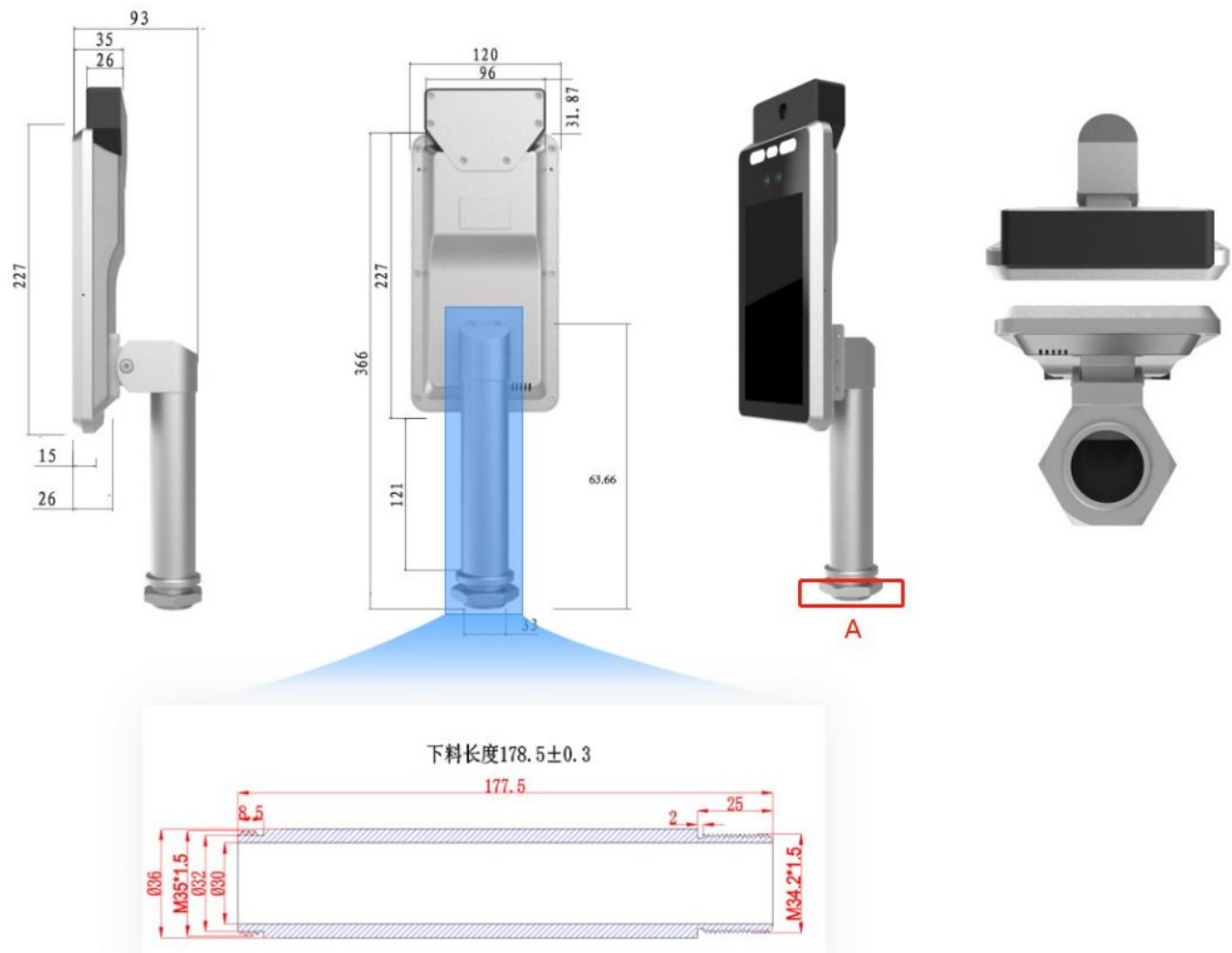
## Installation method

### Wall-mounted



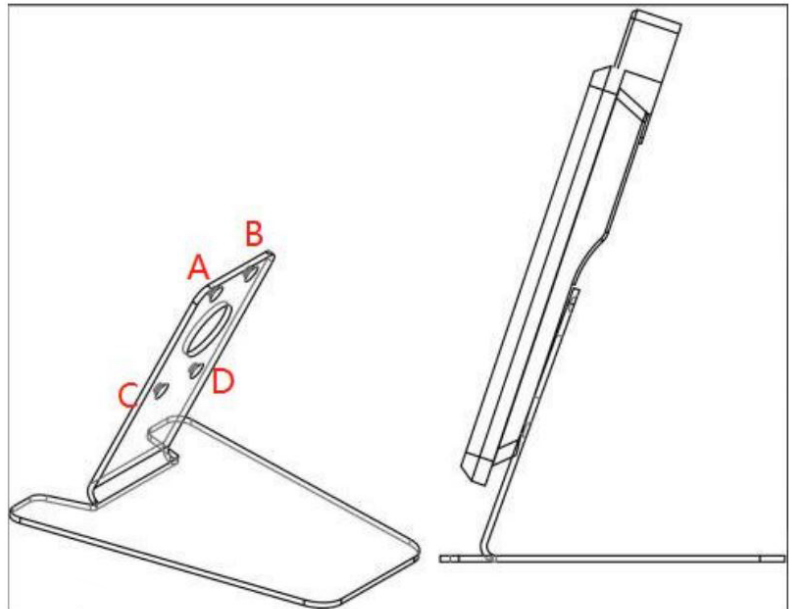
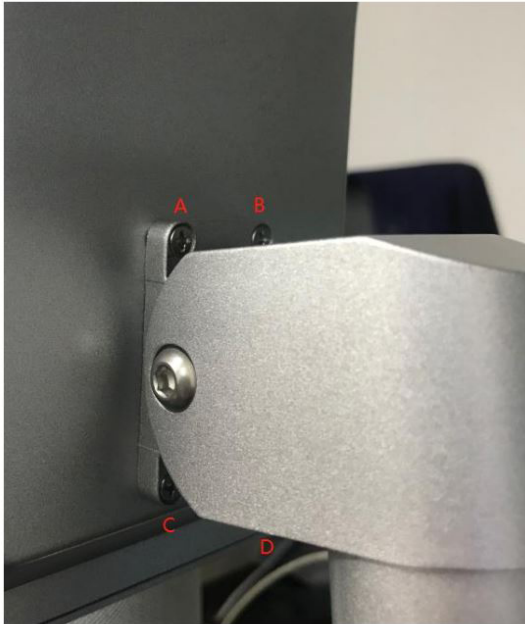
1. Make positioning marks on the wall according to the positions of the 6 fixing holes of the wall-mounted bracket A; After drilling the holes with an impact drill, fix the bracket A with expansion screws;
2. Use the built-in screws to replace the host bracket B with a wall-mounted one, and clip the host buckle B to the wall bracket A;
3. Use the built-in screws to fix the brackets A and B together at C and connect the power supply.

### Upright



1. According to the gate type and actual use scene, make a hole at the appropriate position of the gate, the reference diameter is 34.2mm;
2. Unscrew the nut A at the bottom of the column to separate the entire host and cables;
3. From above the holes, first pass the cables through the holes one by one, and insert the posts into the holes, and then from below the turnstile, pass the cables through the nut A one by one;
4. Tighten the nut and connect the power supply, Wiegand and light.

## Desktop



1. Remove the default column bracket, that is, remove all the screws at ABCD in the left picture to separate the column bracket from the host;
2. Take out the desktop support in the right picture, corresponding to the original ABCD position in the left picture, and tighten it with screws;
3. It can be placed on the desktop and can be moved at will. It can be used when connected to the power supply.

#### **Bracket replacement-column threading method:**



Mobile phone scan code to view video guidance

#### **Maintenance and maintenance**

1. During the installation and use of the product, please strictly abide by the electrical safety regulations in the area of use.
2. Please inspect the product as soon as you receive it. If the product cannot be used normally, please contact the after-sales service personnel. Please do not disassemble and repair it yourself. The company does not assume

any responsibility for product problems caused by disassembly and modification without communication and approval.

3. Please keep your username and password properly.
4. This product has a certain waterproof function, but please do not soak the product in water.
5. Do not disassemble and repair the product by yourself, otherwise it will affect the equipment warranty.
6. Avoid harsh or extreme environments such as extreme high temperature (or low temperature), high humidity, vibration, radiation, and chemical corrosion during installation and use.

## Warranty Card

---

### Warranty Card

Warranty instructions note:

#### 1. Warranty certificate

Please keep this warranty card properly. If the warranty card is lost, it will not be reissued. Please be sure to keep the invoice or relevant valid proof of purchase and present it when the machine fails to be repaired. If you cannot provide the warranty card or related proof of purchase, the starting date of the product's warranty period will be based on the factory date corresponding to the product serial number.

#### 2. Warranty

From the date of sale, the product can be returned within 7 days if there is a problem, and it can be replaced within 15 days. Under normal use, if there is a hardware failure, you can get one year of free maintenance. After the warranty period, you need to pay for materials and maintenance man-hours. The company will be entitled to charge maintenance fees if it falls under the following factors:

1. The product exceeds the warranty period specified by the company.
2. Failure or damage caused by the use, maintenance, and storage of the product not in accordance with the product manual or the environment indicated in the manual.
3. Damage caused by man-made.
4. Failure or damage caused by installation, repair, debugging or disassembly by maintenance personnel of non-authorized organizations of our company.
5. The use of third-party products causes the company's products to malfunction or damage.
6. Damage caused by accident or other force majeure (such as flood, fire, earthquake, etc.).

The right to interpret the above terms belongs to the company.

Address:

Customer Service Hotline:

User feedback (please fill in the following information and send it back to our company)

Product model: \_\_\_\_\_ Product serial number: \_\_\_\_\_

Dealer Name: \_\_\_\_\_ Dealer Phone: \_\_\_\_\_

User name: \_\_\_\_\_ Date of purchase: \_\_\_\_\_



mailing address: \_\_\_\_\_  
Email: \_\_\_\_\_ Phone: \_\_\_\_\_

Repair Date	Completion Date	Fault Description	Maintenance Records	Maintenance Organization and Personnel

## Warning

### FCC statement

**This device complies with part 15 of the FCC Rules. Operation is subject to the following two conditions: (1) This device may not cause harmful interference, and (2) this device must accept any interference received, including interference that may cause undesired operation.**

Caution: The user is cautioned that changes or modifications not expressly approved by the party responsible for compliance could void the user's authority to operate the equipment.

Note: This equipment has been tested and found to comply with the limits for a Class B digital device, pursuant to part 15 of the FCC Rules. These limits are designed to provide reasonable protection against harmful interference in a residential installation. This equipment generates, uses and can radiate radio frequency energy and, if not installed and used in accordance with the instructions, may cause harmful interference to radio communications. However, there is no guarantee that interference will not occur in a particular installation. If this equipment does cause harmful interference to radio or television reception, which can be determined by turning the equipment off and on, the user is encouraged to try to correct the interference by one or more of the following measures:

- Reorient or relocate the receiving antenna.
- Increase the separation between the equipment and receiver.
- Connect the equipment into an outlet on a circuit different from that to which the receiver is connected.
- Consult the dealer or an experienced radio/TV technician for help.

### FCC Radiation Exposure Statement:

This equipment complies with FCC radiation exposure limits set forth for an uncontrolled environment. This equipment should be installed and operated with minimum distance 20cm between the radiator & your body.

### ISED Statement

This device contains licence-exempt transmitter(s)/receiver(s) that comply with Innovation, Science and Economic Development Canada's licence-exempt RSS(s). Operation is subject to the following two conditions:

1. This device may not cause interference.
2. This device must accept any interference, including interference that may cause undesired operation of the device.

### ISED Radiation Exposure Statement:

This equipment complies with Canada radiation exposure limits set forth for uncontrolled environments. This transmitter must not be co-located or operating in conjunction with any other antenna or transmitter. This equipment complies with ISED RSS-102 radiation exposure limits set forth for an uncontrolled environment. This

equipment should be installed and operated with a minimum distance of 20cm between the radiator and any part of your body.

## Documents / Resources

[illegible]